

OHIO RESIDENTIAL
BROADBAND EXPANSION
GRANT PROGRAM COUNTY
REQUEST FOR PROVIDERS

BroadbandOhio



Department of
Development

Instructions

Please identify, to the extent possible, the residential addresses in unserved or tier one areas (below 25/3 mbps) of the county. Please also provide points of contact at the county, municipal corporations, and townships in which the addresses are located. Please attach any other relevant information, documents, or materials that may be helpful for applications.

You must also include the county resolution that requests BroadbandOhio to solicit applications from providers for the grant program. A template resolution can be found on page 2 of this document.

County: Highland

County Contact: Julie Bolender

Contact Phone Number: 937-661-3010

Contact Email Address: jbolender@co.highland.oh.us

Contact Address: 338 W. Main St., Suite D Hillsboro, OH 45133

Addresses	Location (Municipality, Township or County)	Location (Municipality, Township, or County) Point of Contact	Location (Municipality, Township, or County) Contact Phone number/Email
All Townships of	Highland County	Julie Bolender	jbolender@co.highland.oh.us 937-661-3010

If you need to additional space for addresses, please submit the addresses in an additional word document using the same format as above.

Resolution No. 21-202

The Board of County Commissioners of Highland County, Ohio, met in Regular Session on November 3, 2021, with the following members present:

Jeff Duncan, Terry Britton, and David Daniels

Mr. Britton moved the adoption of the following:

RESOLUTION

WHEREAS, Amended House Bill 2 of the 134th Ohio General Assembly created the Ohio Residential Broadband Expansion Grant Program to expand broadband service in the state and provide grants to assist with expansion of broadband service to unserved and underserved residents of Ohio;

WHEREAS, under Section 122.4050 of the Ohio Revised Code, a board of county commissioners may adopt a resolution requesting the Ohio Department of Development to solicit applications from broadband providers for Ohio Residential Broadband Expansion Grant Program grants for eligible projects in the municipal corporations and townships of the county;

WHEREAS, eligible projects are projects to provide tier two broadband service access to residences in an unserved area or tier one area of a municipal corporation or township eligible for funding under the Broadband Expansion Grant Program;

WHEREAS, tier one broadband service is a retail wireline or wireless broadband service capable of delivering internet access at speeds of at least ten but less than twenty-five megabits per second downstream and at least one but less than three megabits per second upstream and a tier one area is an area served by tier one broadband service but not tier two broadband service;

WHEREAS, an unserved area is an area without access to tier one or tier two broadband service; and

WHEREAS, there are unserved or underserved areas in the county whose residents would benefit from the expansion of tier two broadband service if a broadband provider were to complete an eligible project.

NOW, THEREFORE, BE IT RESOLVED,

Section 1. That the following municipal corporations and townships within the county have areas that are unserved or underserved by broadband service:

All Townships of Highland County

Section 2. That pursuant to Section 122.4050 of the Ohio Revised Code, Julie Bolender shall be the contact on behalf of the county to submit a request to the Ohio Department of Development to solicit applications from broadband providers for Ohio Residential Broadband Expansion Grant Program eligible projects in the areas identified in Section 1 of this Resolution.

Mr. Daniels seconded the motion and upon the roll being called, the vote resulted:

Mr. Duncan, yea; Mr. Britton, yea; and Mr. Daniels, yea.

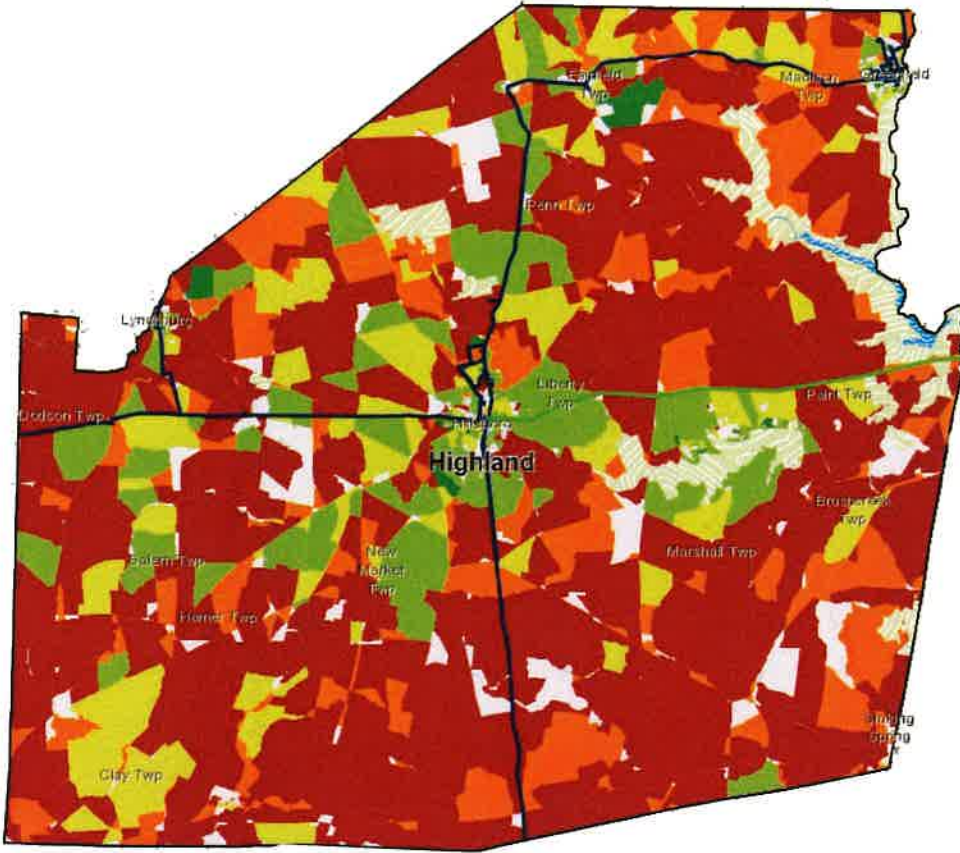
Adopted November 3, 2021

Mary Remoing
Clerk

Jay Duncan
[Signature]
[Signature]
Board of Commissioners
Highland County, Ohio

HIGHLAND COUNTY

broadband profile



0-10 Mbps 10-25Mbps 25-50 Mbps 50-100 Mbps 100+ Mbps

- State owned land or park
- lake, river, or body of water
- Existing Open Middle-Mile
- Proposed Fiber
- Areas with No Data (0 speed tests conducted)

189.75 miles of Open Middle Mile in Highland County

Open middle mile fiber lets competing providers lease capacity on an equal footing to bridge the gap between their central offices and local communities. Middle mile is needed not only to reach homes and businesses but also to support 5G mobile coverage.

Coverage ratings are derived from Ookla Speedtest Intelligence® data licensed by InnovateOhio from the State of Ohio for the months of February 2020 through May 2021. Ratings are color-coded based on median calculated download/upload speeds. Cellular (LTE, 5G) and satellite providers were excluded from our data. Coverage ratings in areas marked as state owned land and parks is not visible on the printed map for clarity, but was included in data calculation. For a full description of our methodology visit connectingappalachia.org

OVERVIEW

77%
of the populated area
& **39%**
of households

DO NOT HAVE ACCESS TO MINIMUM 25/3 Mbps

the county has

528 mi²
of populated area

315 mi²
are unserved

0-10 Mbps: **60.3%**
10-25 Mbps: **16.4%**
**no data for 1.2% of area*

19,980 households

7,701 unserved

0-10 Mbps: **25.6%**
10-25 Mbps: **13.0%**
**no data for 17.5% of households*

DEVELOPMENT DISTRICT

OHIO VALLEY **contact**
ovrdc.org
740-947-2853

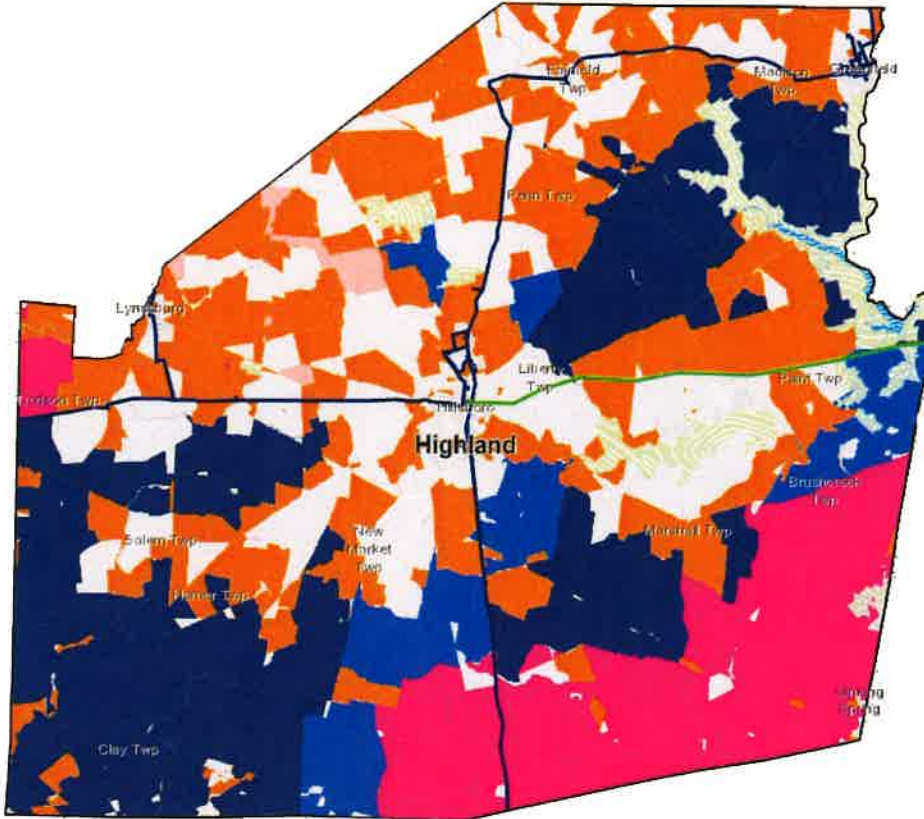


Connecting Appalachia



PRIORITY AREAS

below 25/3 Mbps



Providers that have received Federal RDOF subsidy to improve internet access are illustrated by color

- Charter Communications
 - Mercury Wireless
 - Rural Electric Cooperative Consortium
 - LTD Broadband
-
- Areas of greatest need that are likely to remain below 25/3 Mbps without new government investment

WHY NOW?

As funding is approved at the state and federal level **advocacy to prioritize the areas of greatest need are essential** to working towards eliminating the digital divide in Appalachia Ohio

In our post-COVID economy, broadband is as important as water, electricity, and roads.



ORANGE = current extent of areas with less 25/3 Mbps, this is the base map beneath the RDOF auction winners in the map to the left.

DEVELOPMENT DISTRICT

OHIO VALLEY REGIONAL DEVELOPMENT COMMISSION
contact
ovrdc.org
 740-947-2853



Connecting Appalachia



OUR METHODOLOGY

..... breaking down the data

Ohio Broadband Availability Map Methodology

About This Map

This map was created under contract by Reid Consulting Group, LLC. for Ohio Valley Regional Development Commission (OVRDC). This map, collectively with county maps created for Buckeye Hills Regional Commission (BHRC) and Ohio Mid-Eastern Government Association (OMEGA) are being provided to Connecting Appalachia. Connecting Appalachia is a consortium of local governments, regional economic development councils, and industry professionals working to increase economic opportunity for Appalachia by expanding access to quality, affordable broadband. Broadband availability is displayed at the Block Group level.

Methodology

Coverage ratings are derived from Ookla Speedtest Intelligence® data licensed by InnovateOhio from the State of Ohio for the months of February 2020 through May 2021. Ratings are color coded based on median calculated speed tiers (i.e., download/upload speeds): Below 10/1Mbps is deep red; at least 10/1Mbps and less than 25/3Mbps is orange; at least 25/3Mbps and less than 50/10Mbps is yellow; at least 50/10Mbps and less than 100/20 Mbps is light green; and above 100/20Mbps is bright green.

Where possible, areas with no Ookla data have been assigned an extrapolated rating based on comparative analysis of population density, FCC Form 477 data, and RDOF Phase 1 auction award maps. Extrapolation is effective at low population densities but becomes less accurate as density increases. Areas that cannot be assigned an extrapolated rating are shown in white on the map. To protect consumer privacy, Ookla limits location precision to 100 meters by 100 meters. As a result, a single location may include multiple households and many individual tests. All speed tests within a 100 meter radius were averaged to generate an overall speed by location. Census block ratings were derived by taking the median of all location averages within each block. The following filters were applied to the Ookla data before ratings were calculated:

- Only fixed broadband sources (Cable, DSL, fixed wireless) were included. 3G/LTE/5G mobile data connections were excluded, as were satellite providers.
- Test results with high first-hop latency were excluded to limit the 'skewing' effects of misconfigured wi-fi routers, interference from unshielded household devices, and low wi-fi signal strength.

Reference Layers

The map includes LBRS address data from the State of Ohio. Block Group, Census Block Group and Block boundaries are taken from the 2010 U.S. Census.

Disclaimer

This map is presented "as is" for informational purposes. Reid Consulting Group does not warrant the accuracy, adequacy or completeness of this information and expressly disclaims liability for any errors or omissions. For More Information To learn more about rural broadband issues in Ohio or to request additional information about how this map was developed visit: connectingappalachia.org.



Connecting Appalachia

