



INFORMACAST IP SPEAKER GUIDE

TABLE OF CONTENTS

Introduction.....	3
Manufacturing.....	4
Outdoor Use.....	8
Classrooms.....	12
Two-Sided Speakers.....	15
Large Sign Boards.....	17
Cost-Effective, Audio Only.....	19
Visual Alerting.....	21
Support.....	23
Purchasing	25

INTRODUCTION

Broadcasting Critical Safety Information

When safety is a top priority, making sure emergency messages can be heard clearly is a critical component of any mass notification plan. IP speakers help organizations around the world broadcast these messages through live and recorded audio. Additional visual assets that accompany these speakers make messages even more noticeable. However, with such a large variety of speakers to choose from, it can be difficult to know which is the best fit.

Singlewire Software has compiled this IP speaker guide to help organizations find the right tools for a variety of use cases. Whether you work in manufacturing, K12 or somewhere in between, this guide will help direct you in the right direction for your environment and needs.

Each section also includes a speaker Singlewire has deemed the best for that particular use case. Winners were selected based on information provided by the vendor, feedback from InformaCast customers, and the expertise of members of the Singlewire team.

Note: Pricing is listed as provided by the vendor and is subject to change.

IP Speakers for Manufacturing

Manufacturing facilities can be harsh environments. IP Speakers need to be able to stand up and function properly in these tough conditions. The IP speakers from our ecosystem partners best suited for manufacturing facilities are listed below. Consult the chart to see how each compares, and read through for more details on each speaker's capabilities.

	Advanced Network Devices	AtlasIED	CyberData	Digital Acoustics	2N	Valcom	Wahsega Labs
Withstand a hose hit?	Yes	No	No	Yes	Yes	Yes	No
Produce loud audio to be heard over machinery?	Yes	Yes	Yes	Yes	Yes	Yes	Yes
Include strobes for visual alerting?	Yes	Yes	No	No	No	No	No
Include lights for visual alerting?	Yes	Yes	No	No	No	No	No
Include scrolling text for visual alerting?	Yes	Yes	No	No	No	No	No
Operate at extreme temperatures?	Yes	Yes	Yes	Yes	Yes	Yes	Yes

ADVANCED NETWORK DEVICES

Recommended Models: [IPSWS-SM-O](#) (speaker only) or [IPSWD-RWB](#) (for display).

Withstand a hose hit?	Yes
Produce loud audio to be heard over machinery?	Yes
Include strobes for visual alerting?	Yes
Include lights for visual alerting?	Yes
Include scrolling text for visual alerting?	Yes
Operate at extreme temperatures?	Yes



Additional Details/Notes: IPSWS-SM-O has an IP54 rating for "hose hit," and the AND-STROBE-KIT-1 can be added to support "strobes for visual alerting." The IPSWD-RWB includes a red, white and blue LED flashers for "lights for visual alerting." These speakers support an operating temperature range of -10 to 55 C. They also include GPIO which enables connection to manufacturing sensors/peripherals.

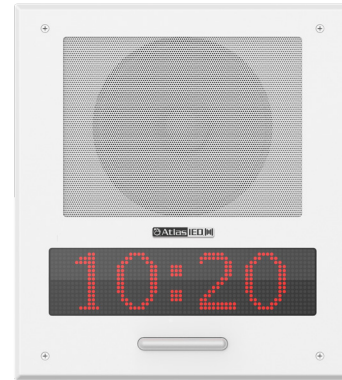
Price Range: \$701.99 (speaker-only) and \$971.09 (for display)

IP Speakers for Manufacturing (cont.)

ATLAS IED

Recommended Model: [I8SCMF+](#)

Withstand a hose hit?	No
Produce loud audio to be heard over machinery?	Yes
Include strobes for visual alerting?	Yes
Include lights for visual alerting?	Yes
Include scrolling text for visual alerting?	Yes
Operate at extreme temperatures?	Yes



Additional Details/Notes: More information is available on the product page:

<https://www.atlasied.com/i8scmfplus>.

Price Range: \$700-\$1,300 (contact Atlas IED for more information)

CYBERDATA

Recommended Models: [011406](#) or [011407](#) with attached horns [011068](#)

Withstand a hose hit?	No
Produce loud audio to be heard over machinery?	Yes
Include strobes for visual alerting?	No
Include lights for visual alerting?	No
Include scrolling text for visual alerting?	No
Operate at extreme temperatures?	Yes



Additional Details/Notes: The 011407 can handle two horns capable of covering 10,000 square feet. The horns can be mounted in any direction. The speaker software does not reside in the horns, so if a horn becomes damaged, it can be easily replaced for \$60. Visual alerting is also available with the addition of the IP Strobe Kit 011288 which is sold separately.

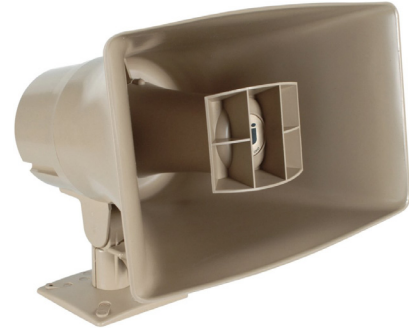
Price Range: \$662.00

IP Speakers for Manufacturing (cont.)

DIGITAL ACOUSTICS

Recommended Models: [IP7-SS40-IC](#) and [SPKR-132-8](#)

Withstand a hose hit?	Yes
Produce loud audio to be heard over machinery?	Yes
Include strobes for visual alerting?	No
Include lights for visual alerting?	No
Include scrolling text for visual alerting?	No
Operate at extreme temperatures?	Yes



Additional Details/Notes: A separate amplifier from the horn is available for harsh environments.

Price Range: See the "Purchasing" section for more information

2N

Recommended Models: [2N SIP Speaker Horn](#) and [2N IP Force](#)

Withstand a hose hit?	Yes
Produce loud audio to be heard over machinery?	Yes
Include strobes for visual alerting?	No
Include lights for visual alerting?	No
Include scrolling text for visual alerting?	No
Operate at extreme temperatures?	Yes



Additional Details/Notes: SIP speaker - IP67, SPLmax 124dB, relay for connection of strobe, -30°C ~ +60°C
IP Force - IP69, 10W (94dB) speaker, outputs for strobes and lights, -40°C - 70°C

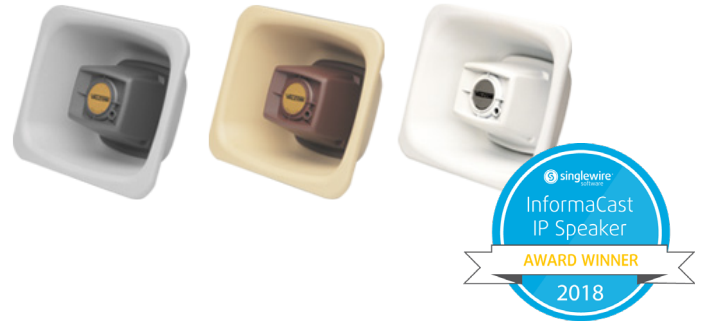
Price Range: See the "Purchasing" section for more information

IP Speakers for Manufacturing (cont.)

VALCOM

Recommended Models: [VIP-480-AL-IC IP FlexHorn](#)

Withstand a hose hit?	Yes
Produce loud audio to be heard over machinery?	Yes
Include strobes for visual alerting?	No
Include lights for visual alerting?	No
Include scrolling text for visual alerting?	No
Operate at extreme temperatures?	Yes



Additional Details/Notes: An optional strobe is available for visual alerting with VIP-999 or visual alerting with VL530A-IC.

Price Range: See the "Purchasing" section for more information

WAHSEGA LABS

Recommended Models: [Wahsega Surface Mount IP Speaker with InformaCast](#)

Withstand a hose hit?	No
Produce loud audio to be heard over machinery?	Yes
Include strobes for visual alerting?	No
Include lights for visual alerting?	No
Include scrolling text for visual alerting?	No
Operate at extreme temperatures?	Yes



Additional Details/Notes: Industrial temp range -40°C to +85°C, speaker sensitivity 96dB 1W/1M SPL, superior talk-back capability, call button and built-in microphone

Price Range: \$324 - \$349

IP Speakers for Outdoor Use

It can be difficult to get a message across outdoors. IP speakers need to be able to withstand the elements and broadcast loudly so messages are heard by everyone. The IP speakers from our ecosystem partners best suited for outdoor use are listed below. Consult the chart to see how each compares, and read through for more details on each speaker's capabilities.

	Advanced Network Devices	AtlasIED	CyberData	Digital Acoustics	2N	Valcom	Wahsega Labs
Can this speaker withstand harsh weather conditions, including extreme cold and heavy rain?	Yes	Yes	Yes	Yes	Yes	Yes	Yes
Produce loud audio to be heard in loud conditions, such as thunderstorms or high winds?	Yes	Yes	Yes	Yes	Yes	Yes	Yes
Withstand tampering and potential vandalism?	Yes	Yes	Yes	Yes	Yes	Yes	Yes
Provide visual alerts, as well as audio?	Yes	No	No	Yes	No	No	No

ADVANCED NETWORK DEVICES

Recommended Models: [IPSWS-SM-O](#) (speaker only) or [IPSIGN-O](#) (display only)

Can this speaker withstand harsh weather conditions, including extreme cold and heavy rain?	Yes
Produce loud audio to be heard in loud conditions, such as thunderstorms or high winds?	Yes
Withstand tampering and potential vandalism?	Yes
Provide visual alerts, as well as audio?	Yes



Additional Details/Notes: IPSWS-SM-O is IP54 and IPSIGN-O is also designed for outdoor use; IPSWS-SM-O can produce loud audio. IPSWS-SM-O can withstand vandalism if equipped with tamper-proof screws. IPSIGN-O provides visual alerts with to 400 feet; IPSWS-SM-O provides audible alerts.

Price Range: \$701.99 (speaker-only) and \$2,105.99 (for display)

IP Speakers for Outdoor Use (cont.)

ATLAS IED

Recommended Models: [IHVP+](#)

Can this speaker withstand harsh weather conditions, including extreme cold and heavy rain?	Yes
Produce loud audio to be heard in loud conditions, such as thunderstorms or high winds?	Yes
Withstand tampering and potential vandalism?	Yes
Provide visual alerts, as well as audio?	Yes



Additional Details/Notes: This IP endpoint comes with a horn instead of speaker driver. It is waterproof, weatherproof, and vandal proof.

Price Range: \$700-\$1,300 (contact Atlas IED for more information)

CYBERDATA

Recommended Models: [011407](#) or [011406](#) with attached horns [011068](#)

Can this speaker withstand harsh weather conditions, including extreme cold and heavy rain?	Yes
Produce loud audio to be heard in loud conditions, such as thunderstorms or high winds?	Yes
Withstand tampering and potential vandalism?	Yes
Provide visual alerts, as well as audio?	No



Additional Details/Notes: The 011407 can handle two horns capable of covering 10,000 square feet. The horns can be mounted in any direction. The speaker software does not reside in the horns, so if a horn becomes damaged, it can be easily replaced for \$60. Visual alerting is also available with the addition of the IP Strobe Kit 011288 which is sold separately.

Price Range: \$662.00

IP Speakers for Outdoor Use (cont.)

DIGITAL ACOUSTICS

Recommended Models: [SPKR-IPSystem-1-VP-HD-IC](#)

Can this speaker withstand harsh weather conditions, including extreme cold and heavy rain?	Yes
Produce loud audio to be heard in loud conditions, such as thunderstorms or high winds?	Yes
Withstand tampering and potential vandalism?	Yes
Provide visual alerts, as well as audio?	Yes



Additional Details/Notes: More information is available at <https://www.digitalacoustics.com/product/wall-mount-ip-speaker/>.

Price Range: See the "Purchasing" section for more information

2N

Recommended Models: [2N IP Verso](#)

Can this speaker withstand harsh weather conditions, including extreme cold and heavy rain?	Yes
Produce loud audio to be heard in loud conditions, such as thunderstorms or high winds?	Yes
Withstand tampering and potential vandalism?	Yes
Provide visual alerts, as well as audio?	No



Additional Details/Notes: SIP speaker - IP67, SPLmax 124dB, relay for connection of strobe, -30°C ~ +60°C
IP Force - IP69, 10W (94dB) speaker, outputs for strobes and lights, -40°C – 70°C. The same for Horn and Force, IP Verso - IP54, modular system, HD cam, -40°C – 70°C, IK8 ... IP Force - IK10

Price Range: See the "Purchasing" section for more information

IP Speakers for Outdoor Use (cont.)

VALCOM

Recommended Models: [SPKR-IPSystem-1-VP-HD-IC](#)

Can this speaker withstand harsh weather conditions, including extreme cold and heavy rain?	Yes
Produce loud audio to be heard in loud conditions, such as thunderstorms or high winds?	Yes
Withstand tampering and potential vandalism?	Yes
Provide visual alerts, as well as audio?	No



Additional Details/Notes: Add V-WG-Horn-2 for vandal resistant housing. Optional visual alerts available with VIP-999.

Price Range: See the “Purchasing” section for more information

WAHSEGA LAB

Recommended Models: _

Can this speaker withstand harsh weather conditions, including extreme cold and heavy rain?	Yes
Produce loud audio to be heard in loud conditions, such as thunderstorms or high winds?	Yes
Withstand tampering and potential vandalism?	Yes
Provide visual alerts, as well as audio?	No



Additional Details/Notes: Industrial temp range -40°C to +85°C, IP65 rating, can use analog horn speaker for increased decibel levels, superior talk-back capability, call button and built-in microphone.

Price Range: \$324 - \$349

Classroom IP Speakers

Overcoming classroom noise can be a challenge, but having the right IP speaker can make all the difference. The IP speakers from our ecosystem partners best suited for classroom use are listed below. Consult the chart to see how each compares, and read through for more details on each speaker's capabilities.

	Advanced Network Devices	AtlasIED	CyberData	Digital Acoustics	2N	Valcom	Wahsega Labs
Can this speaker be heard in noisy classrooms?	Yes	Yes	Yes	Yes	Yes	Yes	Yes
Be used for hands-free intercom?	Yes	Yes	Yes	Yes	Yes	Yes	Yes
Include scrolling text?	Yes	Yes	No	No	No	No	No
Provide the time?	Yes	Yes	Yes	No	No	Yes	No

ADVANCED NETWORK DEVICES

Recommended Models: [IPSWD-RWB](#)

Can this speaker be heard in noisy classrooms?	Yes
Be used for hands-free intercom?	Yes
Include scrolling text?	Yes
Provide the time?	Yes



Additional Details/Notes: This speaker can act as master clock for an analog clock array and has a built-in microphone for two-way communication. It also includes line in for voice reinforcement.

Price Range: \$971.09

ATLAS IED

Recommended Models: [i8SCMF+](#)

Can this speaker be heard in noisy classrooms?	Yes
Be used for hands-free intercom?	Yes
Include scrolling text?	Yes
Provide the time?	Yes



Additional Details/Notes: Additional information is available at <https://www.atlasied.com/i8scmfplus>.

Price Range: \$700-\$1,300 (contact Atlas IED for more information)

Classroom IP Speakers (cont.)

CYBERDATA

Recommended Models: [011399](#) (or 011400) with [011153](#) (or 011154) and [011185](#). Visual: [011288](#)

Can this speaker be heard in noisy classrooms?	Yes
Be used for hands-free intercom?	Yes
Include scrolling text?	No
Provide the time?	Yes



Additional Details/Notes: Additional information is available at <http://www.cyberdata.net/>.

Price Range: \$479 (011399), \$315 (011153), \$79.93 (011185), and \$197.00 (011288)

DIGITAL ACOUSTICS

Recommended Models: [SPKR-IP-CS-IC](#)

Can this speaker be heard in noisy classrooms?	Yes
Be used for hands-free intercom?	Yes
Include scrolling text?	No
Provide the time?	No



Additional Details/Notes: This speaker also accommodates easy ceiling tile lay-in.

Price Range: See the "Purchasing" section for more information

2N

Recommended Models: SIP speaker Horn, [SIP speaker](#), any IP intercom

Can this speaker be heard in noisy classrooms?	Yes
Be used for hands-free intercom?	Yes
Include scrolling text?	No
Provide the time?	No



Additional Details/Notes: This speaker can be used in combination with 2N Audio manager to make announcements to specific zones.

Price Range: See the "Purchasing" section for more information

Classroom IP Speakers (cont.)

VALCOM

Recommended Models: [VIP-431A-DS-IC Surface Mount Wall Speaker with Digital Clock](#)

Can this speaker be heard in noisy classrooms?	Yes
Be used for hands-free intercom?	Yes
Include scrolling text?	No
Provide the time?	Yes



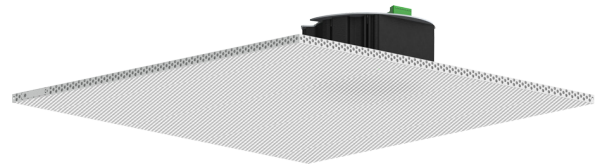
Additional Details/Notes: For visual scrolling text with this speaker, add the optional VL530A-IC.

Price Range: See the "Purchasing" section for more information

WAHSEGA LABS

Recommended Models: [Wahsega 2x2 Ceiling IP Speaker with InformaCast](#)

Can this speaker be heard in noisy classrooms?	Yes
Be used for hands-free intercom?	Yes
Include scrolling text?	No
Provide the time?	No



Additional Details/Notes: This speaker supports two independent speakers using one PoE run, Call/Panic button, sound reinforcement panel, and two relays for classroom lockdown.

Price Range: \$324 - \$349

Two-Sided IP Speakers

Two sided speakers can help amplify a message and help communicate in areas with excess noise, like school hallways. The best two-sided IP speakers are listed below. CyberData, 2N and Wahsega did not submit speakers for consideration in this category. Consult the chart to see how each compares, and read through for more details on each speaker’s capabilities.

	Advanced Network Devices	AtlasIED	CyberData	Digital Acoustics	2N	Valcom	Wahsega Labs
Can this speaker provide the time?	Yes	Yes	N/A	No	N/A	No	N/A
Include scrolling text on each side?	Yes	Yes	N/A	No	N/A	No	N/A
Be heard in noisy environments?	Yes	Yes	N/A	Yes	N/A	Yes	N/A

ADVANCED NETWORK DEVICES

Recommended Models: [IPCDS-RWB](#)

Can this speaker provide the time?	Yes
Include scrolling text on each side?	Yes
Be heard in noisy environments?	Yes



Additional Details/Notes: This speaker provides time with “digital” clocks, and includes an integrated wall mount bracket.

Price Range: \$1,696.49

ATLAS IED

Recommended Models: [IPDSC-DSE+](#)

Can this speaker provide the time?	Yes
Include scrolling text on each side?	Yes
Be heard in noisy environments?	Yes



Additional Details/Notes: More information is available at <https://www.atlasied.com/ipdsc-dseplus>.

Price Range: \$700-\$1,300 (contact Atlas IED for more information)

Two-Sided IP Speakers (cont.)

DIGITAL ACOUSTICS

Recommended Models: [SPKR-IP11-BD-P](#)

Can this speaker provide the time?	No
Include scrolling text on each side?	No
Be heard in noisy environments?	Yes



Additional Details/Notes: This speaker includes a powerful 8-watt integrated amplifier and dual 4" speaker cones.

Price Range: See the "Purchasing" section for more information

VALCOM

Recommended Models: [VIP-9815AL-IC](#)

Can this speaker provide the time?	No
Include scrolling text on each side?	No
Be heard in noisy environments?	Yes



Additional Details/Notes: Scrolling text and digital analog clocks are optional add-ons.

Price Range: See the "Purchasing" section for more information

IP Speakers with Large Sign Boards

Visual elements can help communicate messages and provide additional details. The IP speakers from our ecosystem partners that include large sign boards are listed below. CyberData, Digital Acoustics and Wahsega Labs did not submit speakers for consideration in this category. Consult the chart to see how each compares, and read through for more details on each speaker's capabilities.

	Advanced Network Devices	AtlasIED	CyberData	Digital Acoustics	2N	Valcom	Wahsega Labs
Can this speaker provide the time?	Yes	Yes	N/A	N/A	No	Yes	N/A
Include text that can be seen from a distance?	Yes	Yes	N/A	N/A	No	Yes	N/A
Be heard in noisy environments?	Yes	Yes	N/A	N/A	Yes	Yes	N/A

ADVANCED NETWORK DEVICES

Recommended Models: [IPSIGNL-RWB](#)

Can this speaker provide the time?	Yes
Include text that can be seen from a distance?	Yes
Be heard in noisy environments?	Yes



Additional Details/Notes: Text can be seen from up to 150 feet away. This speaker includes high quality stainless steel front baffle, multi-color display and high visibility LED flashers.

Price Range: \$1,871.99

ATLAS IED

Recommended Models: [I8SCMF+](#)

Can this speaker provide the time?	Yes
Include text that can be seen from a distance?	Yes
Be heard in noisy environments?	Yes



Additional Details/Notes: This speaker has the largest display available from Atlas IED.

Price Range: \$700-\$1,300 (contact Atlas IED for more information)

IP Speakers with Large Sign Boards (cont.)

2N

Recommended Models: [SIP speaker horn](#)

Can this speaker provide the time?	No
Include scrolling text on each side?	No
Be heard in noisy environments?	Yes



Additional Details/Notes: 2N claims this is the most powerful speaker on the market.

Price Range: See the “Purchasing” section for more information

VALCOM

Recommended Models: [VL550AF-IC](#)

Can this speaker provide the time?	Yes
Include scrolling text on each side?	Yes
Be heard in noisy environments?	Yes



Additional Details/Notes: More information is available at http://www.valcom.com/products/enhancements_ts/digital-signage.htm.

Price Range: See the “Purchasing” section for more information

Cost-Effective, Audio-Only IP Speakers

Visual elements can help communicate messages and provide additional details. The IP speakers from our ecosystem partners that include large sign boards are listed below. CyberData, Digital Acoustics and Wahsega Labs did not submit speakers for consideration in this category. Read through for more details on each speaker's capabilities.

ADVANCED NETWORK DEVICES

Recommended Models: [IPSCM-RM](#)

Additional Details/Notes: IPSCM-RM ships with two speakers and IP speaker, and a non-IP speaker that connects to the IP speaker.

Price Range: \$538.19

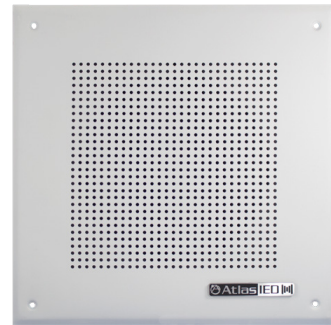


ATLAS IED

Recommended Models: [i8S+](#)

Additional Details/Notes: More information is available at <https://www.atlasied.com/i8splus>.

Price Range: \$390



CYBERDATA

Recommended Models: [11395](#) (IP) or [011120](#) (analog)

Additional Details/Notes: The analog speaker can double the sound output for only \$50 more.

Price Range: \$441 (IP) or \$50 (analog)

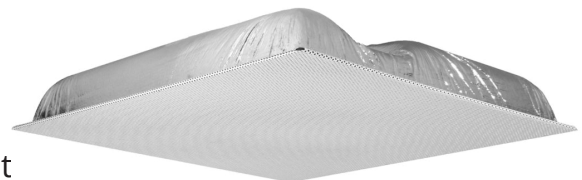


DIGITAL ACOUSTICS

Recommended Models: [SPKR-IP-CS-IC](#)

Additional Details/Notes: Tile lay in cuts down on installation time.

Price Range: \$389 for the speaker, add \$25 for InformaCast



Cost-Effective, Audio-Only IP Speakers (cont.)

2N

Recommended Models: [2N SIP audio converter](#)

Additional Details/Notes: This is only a converter

Price Range: See the "Purchasing" section for more information



VALCOM

Recommended Models: [VIP-120A-IC 8" Round Ceiling Speaker](#)

Additional Details/Notes: More information is available at http://www.valcom.com/products/speaker_ts/ceilsprk.htm.

Price Range: \$299.00 Contractor Net



WAHSEGA LABS

Recommended Models: [SIP Alerter IP Speaker](#)

Additional Details/Notes: Easy mounting, call button, mic, relay for classroom lockdown, small form factor, supports external analog horn speaker for increased decibel levels.

Price Range: \$195



IP Speakers with Visual Alerting

Combining sound and visual elements help make alerts more effective. The IP speakers from our ecosystem partners that include visual alerting are listed below. Digital Acoustics, Wahsega Labs and 2N did not submit speakers for consideration in this category. Consult the chart to see how each compares, and read through for more details on each speaker's capabilities.

	Advanced Network Devices	AtlasIED	CyberData	Digital Acoustics	2N	Valcom	Wahsega Labs
Can this speaker alert people with strobes and/or lights?	Yes	Yes	Yes	N/A	N/A	Yes	N/A
Includes scrolling or static text?	Yes	Yes	No	N/A	N/A	No	N/A

ADVANCED NETWORK DEVICES

Recommended Models: [IPC SL-W-RWB](#)

Can this speaker alert people with strobes and/or lights?	Yes
Includes scrolling or static text?	Yes



Additional Details/Notes: White display visible up to 300 feet.

Price Range: \$1,169.99

ATLAS IED

Recommended Models: [I8SCMF+](#)

Can this speaker alert people with strobes and/or lights?	Yes
Includes scrolling or static text?	Yes



Additional Details/Notes: More information is available at <https://www.atlasied.com/i8scmfplus>.

Price Range: \$700-\$1,300 (contact Atlas IED for more information)

IP Speakers with Visual Alerting (cont.)

CYBERDATA

Recommended Models: [011288 Auxiliary RGB Strobe Kit](#)

Can this speaker alert people with strobes and/or lights?	Yes
Includes scrolling or static text?	No



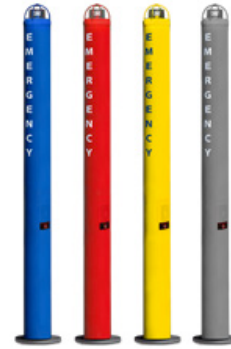
Additional Details/Notes: Powerful 8-watt integrated amplifier, dual 4" speaker cones

Price Range: \$197.00

VALCOM

Recommended Models: [VE9811-IC](#)

Can this speaker alert people with strobes and/or lights?	Yes
Includes scrolling or static text?	No



Additional Details/Notes: Scrolling text and digital analog clocks are optional add-ons.

Price Range: See the "Purchasing" section for more information

Support Resources

Any type of device installation can pose its challenges, so it's important to choose a vendor that offers sufficient support resources to help troubleshoot and resolve issues. Support resources provided by each of the vendors are listed below.

ADVANCED NETWORK DEVICES

Timely support is offered via phone, email and web conference. A Singlewire support page and downloadable app notes are available on the Advanced Network Devices website. For issues regarding multicast and SLP, users can expect friendly support via phone, email and web conference through issue resolution.



Visit: <http://www.anetdsupport.com>

ATLAS IED

Full time support staff is available for remote help to configure IP endpoints and is very familiar with Informacast. They can help troubleshoot hardware and software and connect to call manager platforms. Support documentation for configuring AtlasIED speakers for InformaCast is available from their customer service staff and the AtlasIED website.

Visit: <https://www.atlasied.com/support>

CYBERDATA

Free tech support is available for CyberData customers. All product pages have a "downloads" tab that house the Operations Guide for each product. Customers can interact with a staff that offers more than ten years of industry expertise.

Visit: <http://support.cyberdata.net/>

DIGITAL ACOUSTICS

Speakers come with a two-year warranty, and tech support is available via phone or email from 8 a.m.–4 p.m. CST via phone or email. Support for InformaCast integration is available here. Their knowledgeable network professionals will be able to directly assist or point customers in the right direction.

Visit: <https://www.digitalacoustics.com/support/>

Support Resources (cont.)

2N

Direct support is available via email and phone for signed partners, and any customer has access to LiveChat on the company website. Support for InformaCast is described in the configuration manual. Evaluation and support is offered for issues dealing with multicast and SLP.

Visit: wiki.2n.cz

VALCOM

U.S.-based technical support is offered 24/7 every day of the year. Free CAD speaker layout is available, and InformaCast configuration details are included with each speaker's packaging or on the Valcom website. Direct support for issues regarding multicast of SLP is available from the technical support group at 1-540-563-2000.

Visit: <http://www.valcom.com/InformaCast/default.htm>

WAHSEGA

Direct U.S.-based technical support is by phone, email and Webex. InformaCast configuration details are listed under "Documentation" on the company website. For issues regarding multicast and SLP, Valcom will run through a series of troubleshooting steps to diagnose where the problem originates, analyze packet captures and syslogs, screen share to help solve issue and include Wahsega networking experts on staff to find a resolution.

Contact: support@wahsega.com

Purchasing Information

Organizations interested in purchasing any of the IP speakers listed in this guide can visit the links listed below for details and contact information.

ADVANCED NETWORK DEVICES

Visit <https://www.anetd.com/where-to-purchase/> for information on where to purchase AND speakers.

ATLAS IED

Visit <https://www.atlasied.com/RepMap> to contact your local sales rep for a quote.

CYBERDATA

Visit <http://www.cyberdata.net/where-to-buy-distributors/> for information on where to purchase CyberData speakers.

DIGITAL ACOUSTICS

Visit <https://www.digitalacoustics.com/where-to-buy/> for information on where to purchase Digital Acoustics speakers.

2N

Visit https://www.2nusa.com/en_US/how-to-buy for information on how to purchase 2N speakers.

VALCOM

Visit https://www.valcom.com/about_us/distributors.html for information on where to purchase Valcom speakers.

WAHSEGA

Visit <https://www.wahsega.com/> to buy speakers direct from Wahsega Labs.

CONCLUSION

Connecting IP Speakers with InformaCast

Every speaker listed in this guide is compatible with InformaCast emergency notification software. InformaCast Advanced and InformaCast Fusion reach on-premises devices with emergency messages that can help keep people out of harm's way in the case of severe weather, active shooters, and other crisis scenarios. Learn how InformaCast can help your organization build a robust notification ecosystem that delivers the speed and reach necessary to keep everyone safe and informed at www.singlewire.com/informacast.