

Office of Health Opportunity

Addressing the Social Determinants of Health
Emergency Management Conference
September 2022



ENSURING ALL OHIO COMMUNITIES HAVE A FAIR AND JUST OPPORTUNITY TO THRIVE.

Office of Health Opportunity Mission

Key Objectives

- Establish equity as a pillar of Ohio's public health system.
- Improve clinical experiences and outcomes for the most vulnerable.
- Ensure an equitable response to COVID-19 and other emerging diseases
- Elevate and address the social determinants of health, by impacting upstream social and community conditions of health.

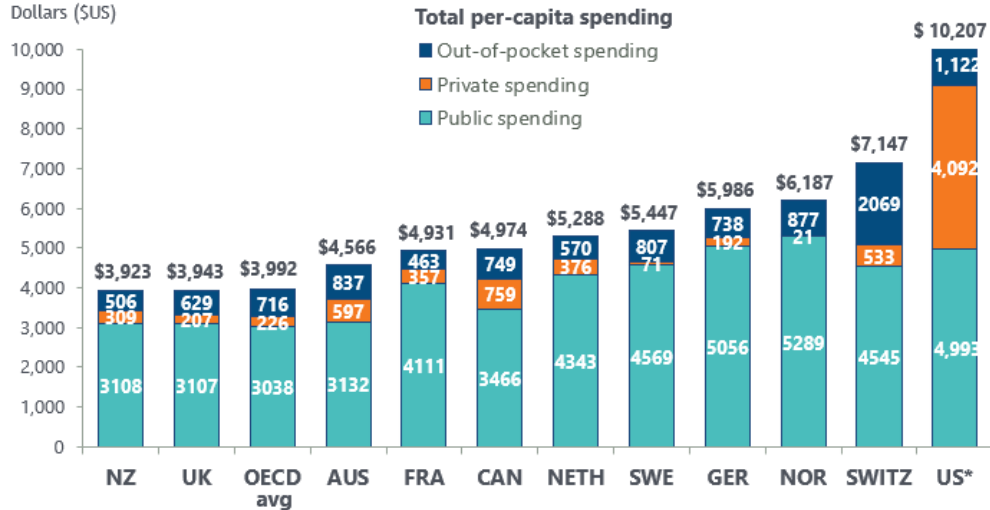
Healthcare Costs and Life Expectancy

SPENDING

Health Care Spending per Capita by Source of Funding, 2018

Adjusted for Differences in Cost of Living

Dollars (\$US)



Data reflect current expenditures on health per capita, adjusted using US\$ purchasing power parities (PPPs), for 2018 or the most recent year: 2017 for FRA, SWITZ, UK, US; 2016 for AUS. Data for 2018 reflect estimated/provisional values. Numbers may not sum to total due to excluding capital formation of health care providers, and some uncategorized health care spending. Public spending reflects government and compulsory spending (HF1); private reflects voluntary schemes (HF2); out-of-pocket (HF3).⁸ For the US, 'Compulsory private insurance schemes' (HF122) spending was reclassified into the 'Voluntary health insurance schemes' (HF21) category, given that the individual mandate to have health insurance ended in Jan 2019. OECD average reflects the average of 36 OECD member countries, including ones not shown here. Source: OECD Health Data 2019.

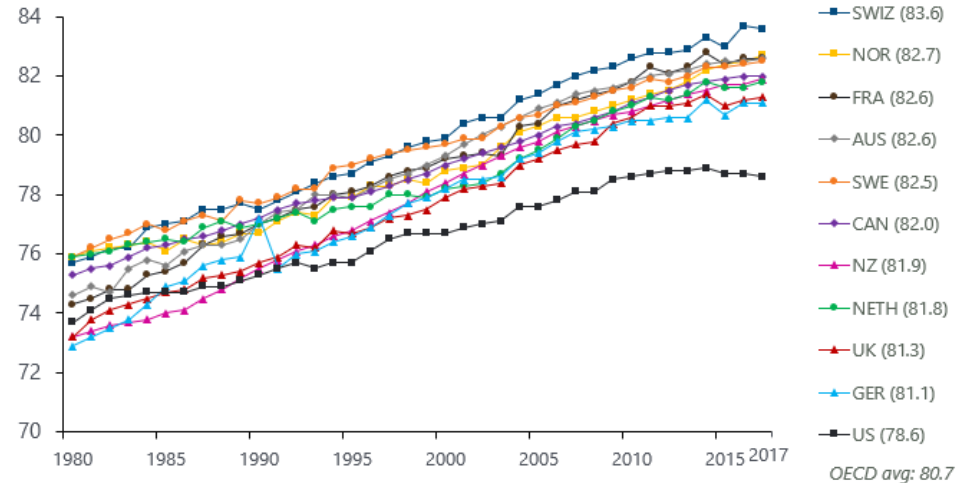


3

HEALTH OUTCOMES

Life Expectancy at Birth, 1980-2017

Years



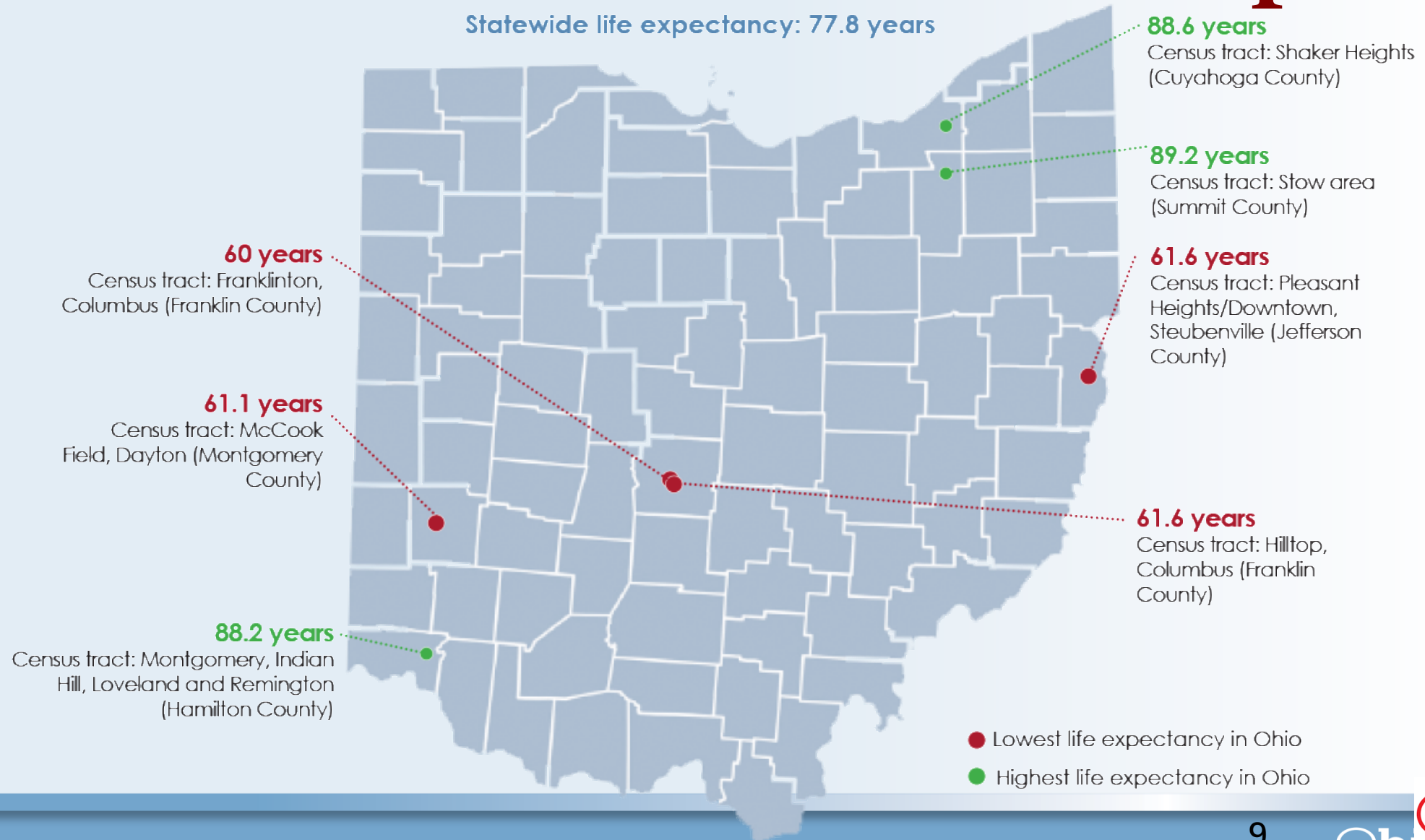
OECD average reflects the average of 36 OECD member countries, including ones not shown here. Source: OECD Health Data 2019.



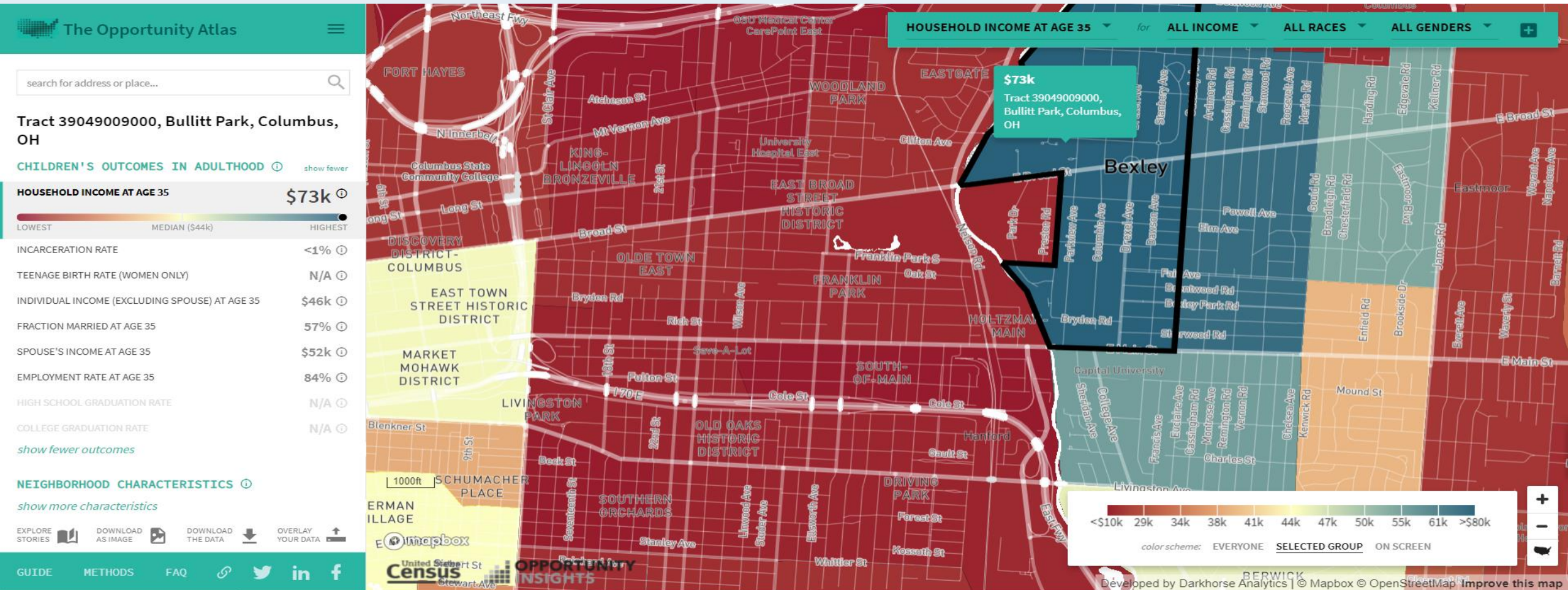
4

Ohio's Health Outcome Gaps



Statewide life expectancy: 77.8 years



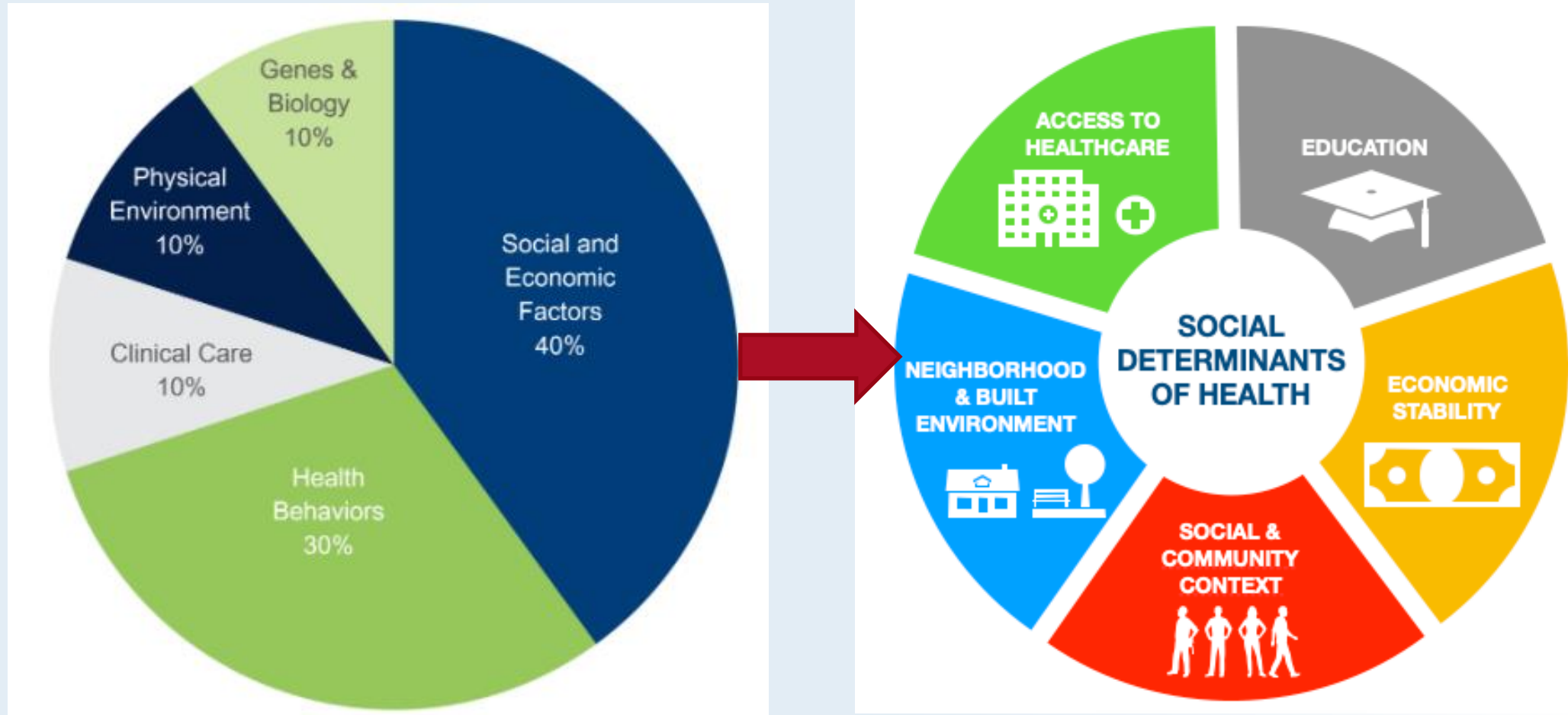
Non-health outcome gaps – children raised in Bexley (Bullitt Park)



Neighborhood characteristics comparison

Tract 39049003700, Franklin Park, Columbus, OH		Tract 39049009000, Bullitt Park, Columbus, OH	
CHILDREN'S OUTCOMES IN ADULTHOOD ⓘ show fewer		CHILDREN'S OUTCOMES IN ADULTHOOD ⓘ show fewer	
NEIGHBORHOOD CHARACTERISTICS ⓘ show more outcomes		NEIGHBORHOOD CHARACTERISTICS ⓘ show more outcomes	
JOB GROWTH RATE FROM 2004 TO 2013	-2.5% ⓘ	JOB GROWTH RATE FROM 2004 TO 2013	2.7% ⓘ
MEDIAN HHOLD. INCOME OF RESIDENTS IN 2012-16	\$33k ⓘ	MEDIAN HHOLD. INCOME OF RESIDENTS IN 2012-16	\$130k ⓘ
MEDIAN HHOLD. INCOME OF RESIDENTS IN 1990	\$24k ⓘ	MEDIAN HHOLD. INCOME OF RESIDENTS IN 1990	\$120k ⓘ
POVERTY RATE IN 2012-16	38% ⓘ	POVERTY RATE IN 2012-16	8.8% ⓘ
FRACTION COLLEGE GRADUATES IN 2012-16	N/A ⓘ	FRACTION COLLEGE GRADUATES IN 2012-16	N/A ⓘ
FRACTION NON-WHITE IN 2010	72% ⓘ	FRACTION NON-WHITE IN 2010	8.7% ⓘ
			
FOREIGN-BORN SHARE IN 2012-16	3.5% ⓘ	FOREIGN-BORN SHARE IN 2012-16	6.3% ⓘ
FRACTION SINGLE PARENTS IN 2012-16	52% ⓘ	FRACTION SINGLE PARENTS IN 2012-16	20% ⓘ
show fewer characteristics		show fewer characteristics	

What drives differences in health outcomes?



STATE RESPONSE

Collective impact to improve the social determinants of health

Workforce Development projects

- Community Health Worker grants
- Continuing education efforts
- Recruitment and retention dollars for high Medicaid serving hospitals*
- Health Equity Clinical Services Manager

Data Projects

- Ohio Health Improvement Zone Dashboard
- Social Determinants of Health Dashboard
- Race and ethnicity data improvements pilot
- Survey data improvements and enhancements

State partner projects

- Ohio Department of Transportation Mobility Ohio Project
- Ohio Department of Education – Healthcare preceptor program
- Ohio Department of Education – School-based healthcare expansion
- Ohio Commission on Minority Health – demonstration grants, operating budget expansion, and community conversations
- OhioMHAS – expand peer services in communities most impacted by COVID-19.

Developing State Government Tools for Equity

- Establish expectations
- Develop a knowledgeable workforce
- Prioritize funding
- Collect, analyze and use data
- Lead with regulation and policy
- Engage in partnerships
- Provide technical assistance
- Create structural change





**\$7M in community
engagement grants to
38 Ohio Health
Improvement Zones
across the state.**



Mobile Health Units

- 6 fully staffed mobile units
- COVID-19 vaccination
- Core 4 Services
- Focused on partnerships and opportunities in Ohio Health Improvement Zones, especially those with the lowest vaccination rates.



Priority School Districts

- Located in Ohio Health Improvement Zones
- >40% free and reduced lunch
- Low broadband access*
- \$17M investment



Community Wellbeing: Social Determinants of Health Dashboard



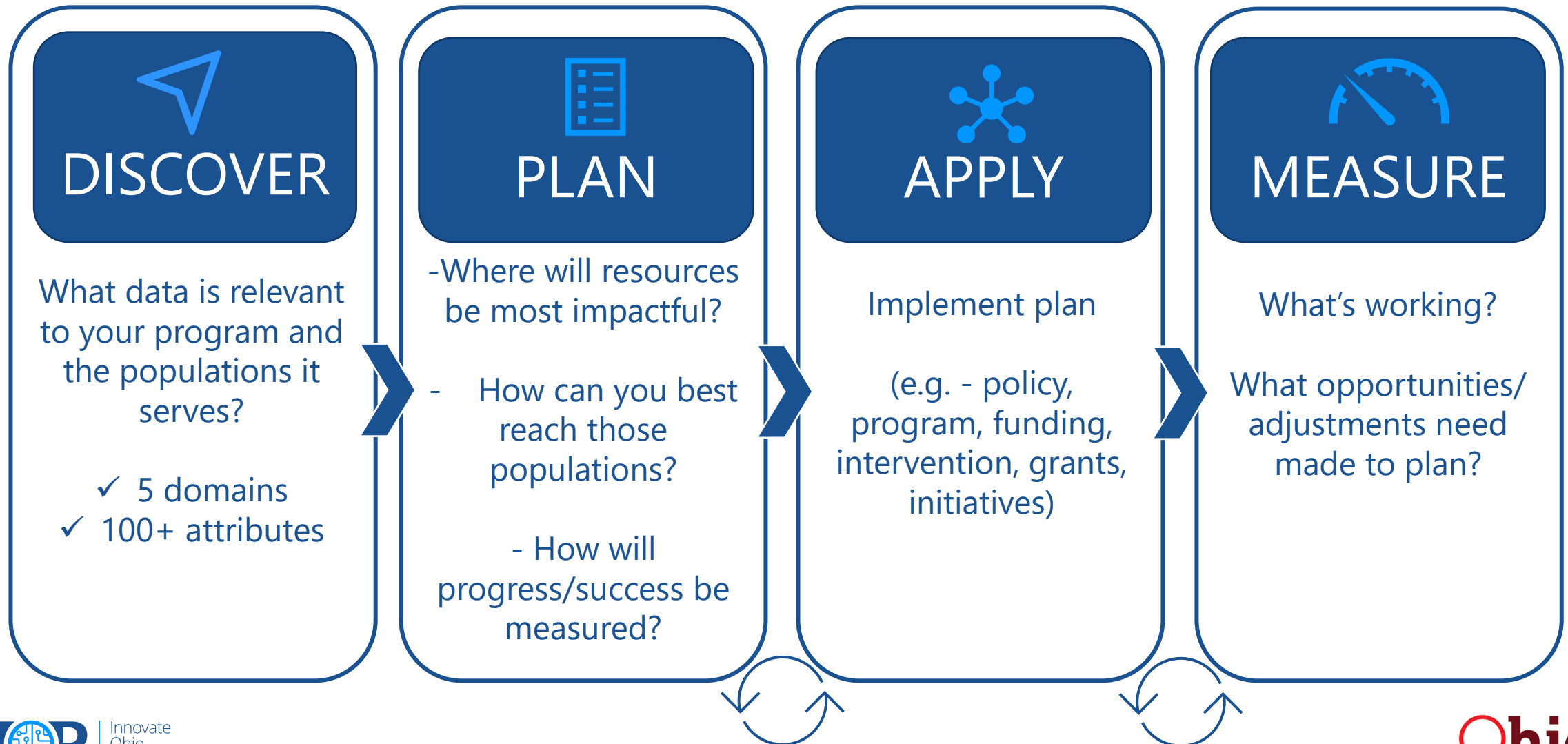
- Built on publicly available data, including:
 - Census Bureau
 - Centers for Disease Control and Prevention
 - American Community Survey
 - *What data could be added to benefit your agency?*
- 5 Domains and over 100 Metrics
- Data at the Census Tract level
- Now available publicly on data.ohio.gov



Demo

[Community Wellbeing: Social Determinants of Health Dashboard](#)

Integrating the Community Wellbeing Dashboard into Agency Processes



Contact us to learn more!



Visit our webpage:

<https://odh.ohio.gov/know-our-programs/health-equity>



Subscribe to our newsletter:

HEALTHOPPORTUNITY@ODH.OHIO.GOV



Send us an email:

HEALTHOPPORTUNITY@ODH.OHIO.GOV