

# EXAMPLE QUICK REFERENCE GUIDE

This example was created by EPA Region 7 to be used as a guide to assist the regulated community with compliance. It does not substitute for or replace any regulatory requirements.

## Contingency plan quick reference guide

ABC FACILITY  
1000 SW Main Street  
Anytown, Iowa 50000

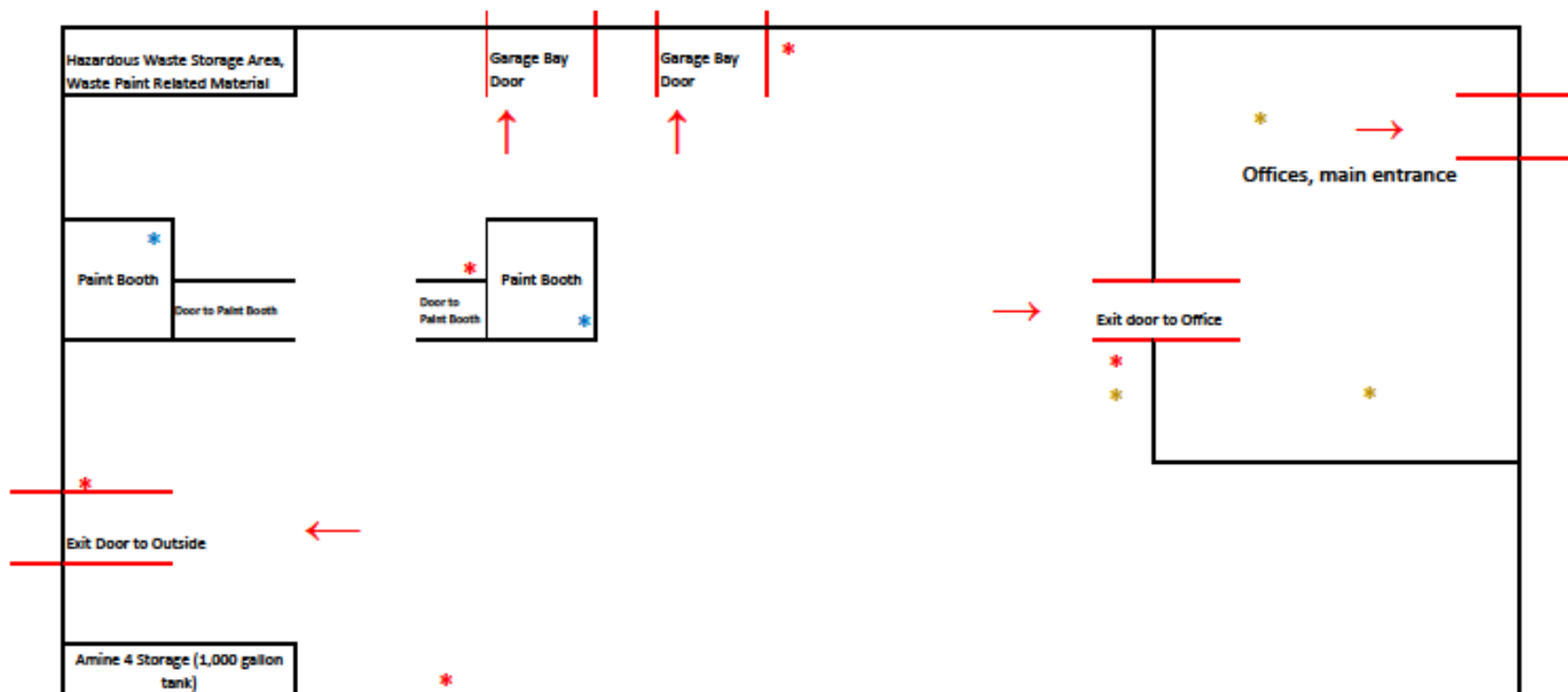
### Facility Contacts:

Primary Emergency Coordinator: George Washington Mobile Number (24/7): 515-555-0000  
Secondary Emergency Coordinator: Abraham Lincoln Mobile Number (24/7): 515-555-0001  
Tertiary Emergency Coordinator: Martha Washington Mobile Number (24/7): 515-555-0002

**Note:** ABC Facility operates 3 shift, 24/7, but the order of contact during an emergency is listed above.

### Hazardous Waste Information:

| Name of Waste  | Waste Codes/Hazards  | Location Accumulated   | Maximum Amounts Present   | Response Notes   | Special Notes to Hospital/Treatment personnel  |
|--|--|--|---|--|--|
| Paint Related Wastes (liquid)  | D001 (ignitability, flash point <140 °F); F003, F005 (Benzene, Methyl Ethyl Ketone, Toluene, Toxicity) | NW corner of Warehouse, hazardous waste storage area                               | Five, 55-gallon drums (2,065 pounds)  | If personnel come into direct contact with material, decontamination at the hospital may be required prior to treatment.                                   | None   |
| Paint Related Wastes (liquid)  | D001 (ignitability, flash point <140 °F); F003, F005 (Benzene, Methyl Ethyl Ketone, Toluene, Toxicity) | Two Satellite Accumulation Areas as noted with blue asterisks on the attached map. | One, 55-gallon drum (440 pounds)  | If personnel come into direct contact with material, decontamination at the hospital may be required prior to treatment.                                   | None   |
| Off-specification 2, 4-D , a herbicide, (brand name is Amine 4) (liquid) | D016 (toxicity); Flashpoint 190 °F.  | SW corner of warehouse near new product storage of Amine 4.                        | Off-Spec – 1 tank, 1,000 gallons<br>New product – 1 tank (same tank as off-spec), 1,000 gallons | Use PPE to prevent contact with skin and eyes. Immediately prevent spills from entering drains and waterways. Prevent sources of ignition and open flames. | Contact Chemtrac for emergency medical treatment information at 1-800-424-9300. If in eyes, wash eyes for several minutes. |



- \* Satellite Accumulation Area for Paint Related Waste Material (D001, F003, F005)
- \* Fire Alarms (ring on-site only, there are no fire alarms that notify off-site personnel)
- \* Telephone for off-site notification of emergency

→ Indicates evacuation route out of the building.

Note 1: Hazardous waste (paint related waste) is generated and accumulated inside each of the two paint booths, and is accumulated in the hazardous waste storage area. Amine 4 can be a hazardous waste if it is off-specification and it is generated and accumulated in the SW corner at the Amine 4 tank.

Note 2: Smoke detectors are located throughout the office and main warehouse on the ceiling, in a grid about every 25 feet. Smoke detectors are connected to an automatic sprinkler system.

Street Map

