

# 2023 Ohio Sewer and Water Rate Survey

Project Led By: Prof. Daniel Gingerich  
E-mail: [gingerich.62@osu.edu](mailto:gingerich.62@osu.edu)  
Department of Civil, Environmental and Geodetic Engineering  
College of Engineering  
The Ohio State University

On Behalf Of: Division of Environmental and Financial Assistance  
Ohio Environmental Protection Agency

May 2025

## 2023 Ohio Sewer and Water Rate Survey

### Table of Contents

1.0 Executive Summary .....	1
2.0 Introduction .....	1
3.0 Rate Calculation Methods .....	1
4.0 Sewer Rates .....	3
5.0 Water Rates .....	5
6.0 Stormwater Rates .....	7
7.0 Tap-in Fees .....	7
8.0 Rate Comparisons .....	8
9.0 Note for Appendices .....	8
2023 Sewer and Water Rate Survey and Invitation .....	A-1
2023 Residential Sewer Rates for 4,000 gal/mo and Varying Demand .....	B-1
2023 Residential Water Rates for 4,000 gal/mo and Varying Demand .....	C-1
2023 Reported Residential Sewer Usages and Rates .....	D-1
2023 Reported Residential Water Usages and Rates .....	E-1
2023 Residential Stormwater Rates .....	F-1
2023 Residential Tap-In Fee Responses .....	G-1

### Project Team

The 2023 Ohio Sewer and Water Rate Survey team included Prof. Daniel Gingerich (The Ohio State University Department of Civil, Environmental and Geodetic Engineering and Department of Integrated Systems Engineering), Prof. Jeffrey Bielicki (The Ohio State University Department of Civil, Environmental and Geodetic Engineering and John Glenn College of Public Affairs), Jacob Gardner (The Ohio State University Environmental Science Graduate Program) as the project Graduate Research Assistant, and Robbie Austin (The Ohio State University Department of Chemical Engineering) as the project Undergraduate Research Assistant.

### Acknowledgement and Disclaimer

This product or publication was financed primarily through a grant from the Ohio Environmental Protection Agency. The contents and views, including any opinions, findings, or conclusions or recommendations, contained in this product or publication are those of the authors and have not been subject to any Ohio Environmental Protection Agency peer or administrative review and may not necessarily reflect the views of the Ohio Environmental Protection Agency, and no official endorsement should be inferred.

# 2023 Ohio Sewer and Water Rate Survey

## 1.0 Executive Summary

During the fall of 2023, a research team at Ohio State created and distributed a survey on behalf of the Ohio Environmental Protection Agency (EPA) to community water and sewer systems around the State of Ohio. The survey inquired about system-specific financial characteristics (e.g., system rate structures for drinking water, sewer, and stormwater, increases since 2022, average demand by residential customers). Results from this survey and other data collection activities were used to estimate average household costs of water, sewer, and stormwater services across the state. Rate information was compiled for 321 systems that provided at least one of the three water services studied here. From these results, the Ohio State research team determined that the mean yearly cost for a model household which consumes 4,000 gallons of water per month is \$528.03 for sewer, \$481.34 for water, and \$55.96 for stormwater.

## 2.0 Introduction

The Sewer and Water Rate Survey's central purpose is to collect and publish Ohio residential sewer and water rates. Over the fall of 2023, a team of researchers in the Department of Civil, Environmental and Geodetic Engineering collected data on sewer and water rates as of December 31, 2023 from across the state on behalf of the Ohio Environmental Protection Agency. A copy of this survey is included in Appendix A.

For the 2023 survey, completed responses were received from 321 utilities, including 270 systems that provide drinking water, 215 systems that provide sewerage services, and 74 systems that provide stormwater services. The 2023 Sewer and Water Rate Survey also gathered information regarding the following:

- Increases in Charged Rates
- Sewer Tap-in Fees
- Water Tap-in Fees
- Average Residential Usages
- Average Residential Bills

In the past, the Ohio EPA distributed similar surveys to the one outlined in this report. This marks the second year that the survey was developed and distributed by researchers at Ohio State on behalf of Ohio EPA. This report continues to use the updated methods from the 2022 report. As a result, water and sewer rates in this report should not be directly compared with sewer and water rates reported by Ohio EPA prior to the 2022 Sewer and Water Rate Survey report.

## 3.0 Rate Calculation Methods

Sewer and water charges usually depend on consumption measured in gallons or cubic feet, and are typically billed monthly, bimonthly or quarterly. In the Sewer and Water Rate Survey, respondents were asked to provide average residential usages, along with information regarding the structure and costs of rates themselves. These values allowed

## 2023 Ohio Sewer and Water Rate Survey

for system specific sewer and water bills to be calculated. Household water bills were calculated using two different levels of consumption. The first of these is:

- **Reported Average Usage.** Starting with this survey, average household bills were calculated using the average service usage reported by a utility and rates for residential customers within municipal limits.

Furthermore, to standardize sewer and water rates across Ohio and to allow for comparisons among systems, water bills were calculated using a standard level of consumption.

- **4,000 gal/month.** In addition, water rates were calculated at a rate of approximately 44 gallons per capita per day for a household that consists of three (3) people at the rate for residential customers within municipal limits. This usage rate is approximately equal to indoor water use levels from the peer-reviewed literature,<sup>1</sup> reported average usages from data collected by Ohio EPA in 2020, reported average usages found in this survey, and is consistent with values utilized in work by others (e.g., the Ohio Water and Wastewater Rates Dashboard developed by University of North Carolina Chapel Hill<sup>2</sup>). This corresponds to usages of:
  - 4,000 gallons per month (534 cubic feet per month)
  - 8,000 gallons bi-monthly (1,069 cubic feet bi-monthly)
  - 12,000 gallons per quarter (1,604 cubic feet per quarter)

In addition, we performed quality assurance/quality control checks on reported results when computed water and sewer bills seemed unrealistically low or high. This was done by comparing rate structures reported in the survey to published rate sheets that utilities submitted or are available on websites for local government, with historic data, or via correspondence to utilities. In addition, for several larger systems that did not respond to our survey, we used published rate data to include them in our analysis.

For the remainder of this report, data will be provided for sewer and water rates at both the reported usage and 4,000 gal/month usage levels outlined above. It is important to note that the rates calculated from the reported usage values are specific to individual systems meaning these values should not be compared across systems as directly as those calculated from the 4,000 gallons per month consumption level where usage was standardized across all systems.

---

<sup>1</sup> Teodoro, Manuel P. 2018. "Measuring Household Affordability for Water and Sewer Utilities." Journal-American Water Works Association 110 (1): 13–24.

<sup>2</sup> University of North Carolina Chapel Hill. "Ohio Water and Wastewater Rates Dashboard." UNC Environmental Finance Center, 2020, [efc.sog.unc.edu/resource/ohio-water-and-wastewater-rates-dashboard](https://efc.sog.unc.edu/resource/ohio-water-and-wastewater-rates-dashboard).

## 2023 Ohio Sewer and Water Rate Survey

The rates in Appendices B, C, D, and E include charges levied for direct use of sewer and water systems. Charges unrelated to sewer and water use, such as income and property taxes, have not been included in rate calculations.

### 4.0 Sewer Rates

The 2023 average annual residential sewer rate at the updated usage rate of 4,000 gallons per month in Ohio was \$528.03/yr. The 2023 average annual residential sewer rate when using the system-specific average service usage rates was \$500.97/yr.

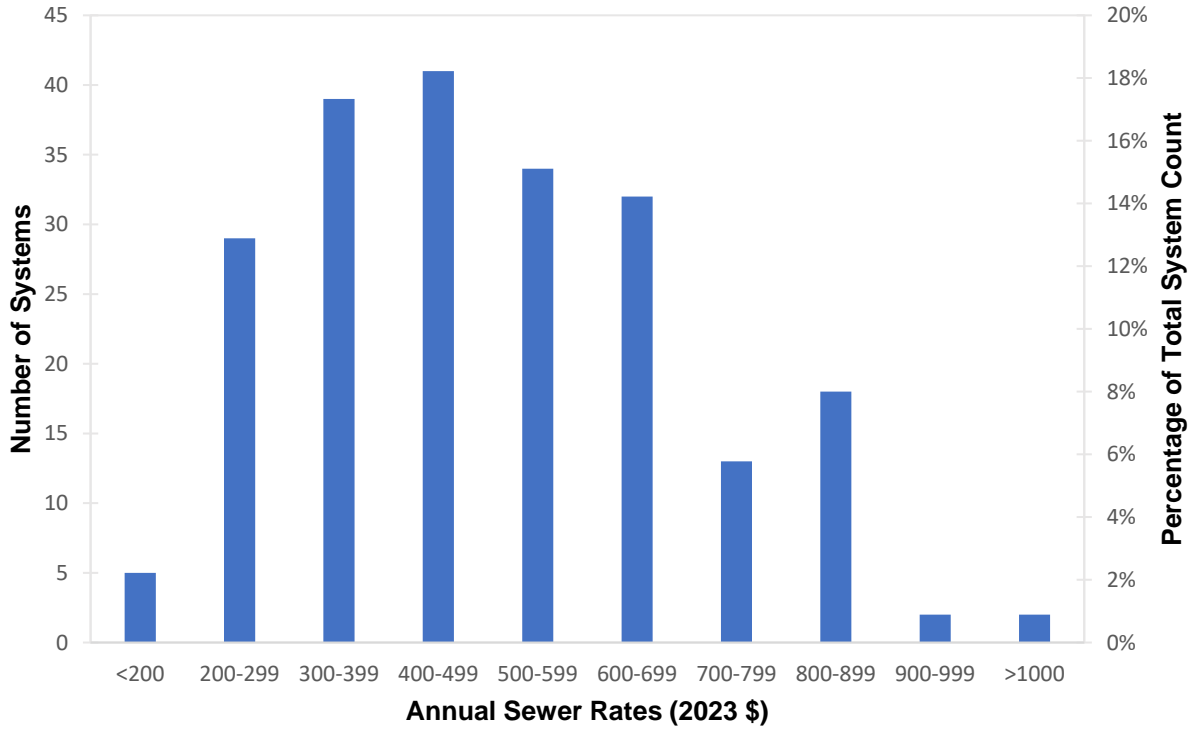
In addition to the descriptive statistics reported below in Table 1, sewer rates over a range of usage levels per household (500-8,000 gallons/month) can be found at the end of this report in Appendix B. Results using the utility-reported sewerage use are given in Appendix D.

**Table 1: Descriptive Statistics for Annual Household Sewer Rates (n=215)**

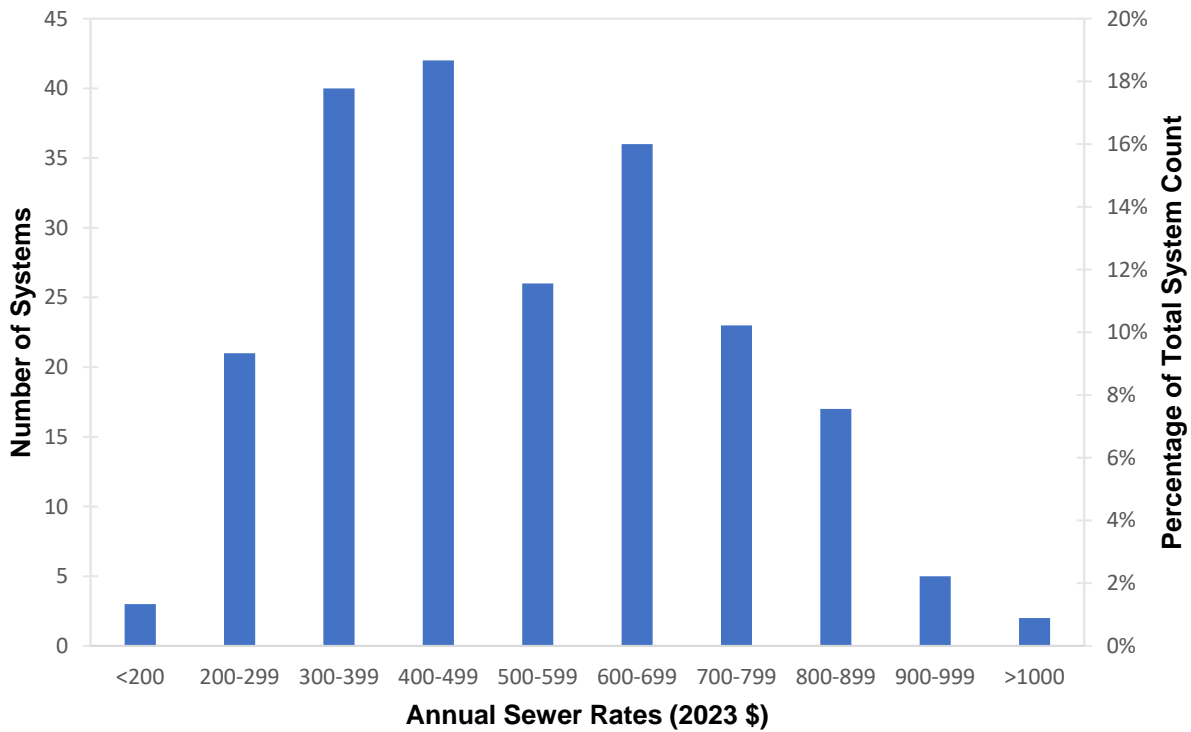
	Annual Sewer Rates [\$/yr]	
	Reported Water Usage	4000 gal/mo*hh
<b>Median</b>	479.74	504.84
<b>Mean</b>	500.97	528.03
<b>St. Dev.</b>	193.89	199.66
<b>Minimum</b>	24.00	24.00
<b>Maximum</b>	1,151.28	1,092.00

The two figures below present the annual sewer rates calculated for each individual system and arranges them into bins of \$100 to visualize the distribution of annual sewer rates. Figure 1 presents the sewer rates calculated for all systems at the sewerage usage reported by utilities in the survey, while Figure 2 presents the same rates calculated at the standardized value of 4,000 gallons per month. Each figure shows the average sewer rate falling somewhere in the range of \$200-\$700 per year, which is consistent with the mean values for sewer rates calculated in Table 1.

## 2023 Ohio Sewer and Water Rate Survey



**Figure 1: 2023 Annual Sewer Rate Distribution Using Reported Sewerage Use.**



**Figure 2: 2023 Annual Sewer Rate Distribution Using 4,000 gal/mo.**

## 2023 Ohio Sewer and Water Rate Survey

In 2023, of the 181 community sewer systems that provided a response to questions regarding rate increases, 138 (76%) of the surveyed communities reported sewer rate increases.

### 5.0 Water Rates

The 2023 average annual residential water rate at the updated usage rate of 4,000 gal/month in Ohio was \$481.34/yr. The 2023 average annual residential water rate when using reported average service usage rates was \$464.82/yr.

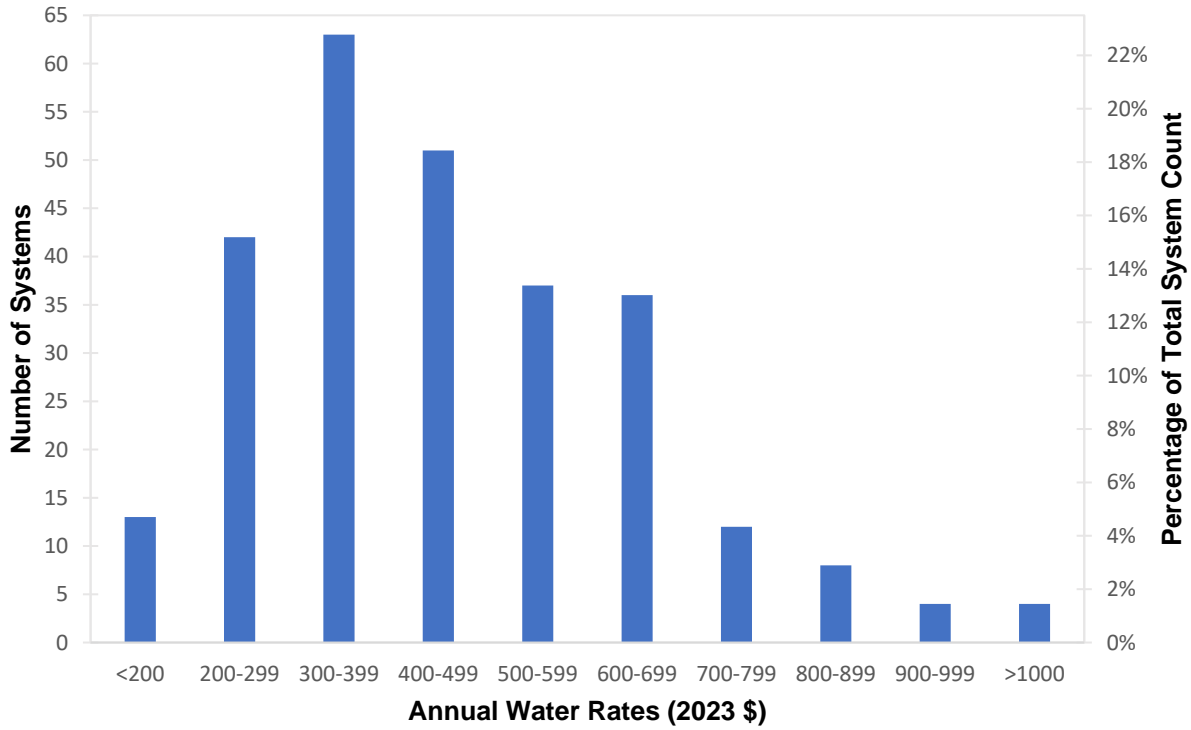
In addition to the descriptive statistics reported in Table 2, water rates over a range of usage levels per household (500-8,000 gallons/month) can be found at the end of this report in Appendix C. Results using the utility-reported water use are given in Appendix E.

**Table 2: Descriptive Statistics for Annual Household Water Rates (n=270)**

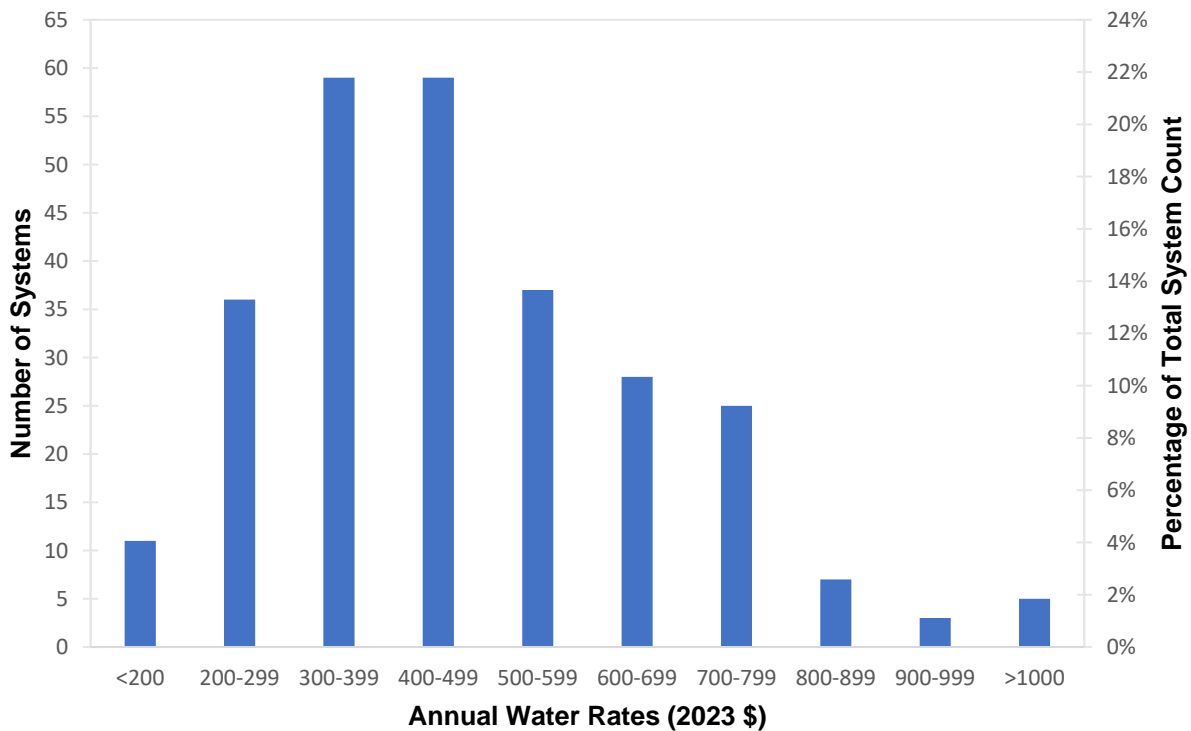
	Annual Water Rates [\$/yr]	
	Reported Water Usage	4000 gal/mo*hh
<b>Median</b>	425.38	436.50
<b>Mean</b>	464.82	481.34
<b>St. Dev.</b>	197.69	201.28
<b>Minimum</b>	24.00	24.00
<b>Maximum</b>	1,270.60	1,270.60

The two figures below present the annual sewer rates calculated for each individual system and arranges them into bins of \$100 to visualize the distribution of annual sewer rates. Figure 3 presents the water rates calculated for all systems at the water usage reported by utilities in the survey, while Figure 4 presents the same rates calculated at the standardized value of 4,000 gallons per month. Each figure shows the average water rate falling somewhere in the range of \$200-\$600 per year, which is consistent with the median values for water rates calculated in Table 2.

## 2023 Ohio Sewer and Water Rate Survey



**Figure 3: 2023 Annual Water Rate Distribution Using Reported Water Use.**



**Figure 4: 2023 Annual Water Rate Distribution Using 4,000 gal/mo.**

## 2023 Ohio Sewer and Water Rate Survey

In 2023, of the 180 community water systems that provided a response to questions regarding rate increases, 129 (72%) of the surveyed communities reported water rate increases.

### 6.0 Stormwater Rates

In conjunction with the sewer and water rates provided above, stormwater rates were also collected in the survey with complete responses from 74 systems. Unlike sewer and water rates which are most often calculated based off usage, stormwater is typically calculated based off the impervious surface area of each individual property serviced by a utility. Due to the hyper-specific nature of these values to individual property owners, the survey did not request this information and instead calculated stormwater rates based off an assumed monthly amount provided by utilities. Due to this, Table 3 below provides only one group of descriptive statistics for collected stormwater rates and does not account for the average usage or impervious surface area of any representative user. The 2023 average annual residential stormwater rate was \$4.66 per month, or \$55.96/yr.

In addition to the descriptive statistics reported in Table 3, the full dataset of stormwater rates can be found at the end of this report in Appendix F.

**Table 3: Descriptive Statistics for Stormwater Rates (n=74)**

	<b>Annual Stormwater Rates [\$ /yr]</b>
<b>Median</b>	42.00
<b>Mean</b>	55.96
<b>St. Dev.</b>	51.35
<b>Minimum</b>	4.00
<b>Maximum</b>	413.40

### 7.0 Tap-in Fees

Appendix G contains the sewer and water tap-in fees submitted by the communities for residential customers inside and outside their municipal limits. These fees are presented as they were reported on the questionnaires, without standardization or interpretation. As a result, they may not be comparable across communities due to different charges being included in the reported fees. For example, some of the reported tap-in fees included labor and installation charges; whereas, other reported tap-in fees included only an administrative fee with the customer being held responsible for hiring their own private contractor to install the lines and taps.

## 2023 Ohio Sewer and Water Rate Survey

### 8.0 Rate Comparisons

Comparing the calculated sewer, water, and stormwater rates at 4,000 gallons/month to those estimated in the 2022 Ohio Sewer and Water Rate Survey report, increases in average rates are seen for all three categories. Average sewer rates increased 7.8% from 2022 to 2023, going from \$489.95/yr in 2022 to \$528.03/yr in 2023. Average water rates increased 0.9% from 2022 to 2023, going from \$476.93/yr in 2022 to \$481.34/yr in 2023. Finally, average stormwater rates increased 21.1% from 2022 to 2023, going from \$46.20/yr in 2022 to \$55.96/yr in 2023.

For reference, the rate of change of other essential goods is commonly measured through the change in the Consumer Price Index (CPI) measured by the Bureau of Labor Statistics (BLS). BLS data shows that from December 2022 to December 2023, the CPI for all items rose 3.4%. With relation to other essential goods besides water and sewer service, shelter costs increased by 6.2%, electricity costs increased by 3.3%, prescription drug costs increased by 3.3%, food costs increased 2.7%, and utility (piped) gas service costs decreased by 13.8%.<sup>3</sup>

### 9.0 Note for Appendices

In the Appendices B-G, a dash mark, "-", indicates that data was not available for the system. This does not mean the data does not exist for this specific value – it may exist and just not have been reported. For example, a "-" in Appendix G does not necessarily mean that a system does not have a set tap-in fee for any specific category, it just means that the value was not reported in the survey.

In Appendices D and E, an asterisk, "\*", next to a usage value indicates that the value shown was changed from the value originally provided by the utility. Reported values were investigated when the value was determined to be likely incorrect and input in error. As an example, in cases where reported usages fell outside of the range of 1,496 gal/mo - 11,220 gal/mo (2 CCF/mo - 15 CCF/mo), the reported usage value provided by the utility was deemed unrealistic. In these cases, the value was replaced with the population median usage value of 3,883 gallons/mo (5.190 CCF/mo) for drinking water, and 3,841 gallons/mo (5.135 CCF/mo) for sewer.

Additionally, systems which charge for water and/or sewer on a flat rate basis often did not provide usage values resulting in some systems being listed as having zero usage but still having a corresponding annual cost.

---

<sup>3</sup> U.S. Bureau of Labor Statistics. "Consumer Price Index: 2023 in Review." The Economics Daily, 2024, [www.bls.gov/opub/ted/2024/consumer-price-index-2023-in-review.htm](http://www.bls.gov/opub/ted/2024/consumer-price-index-2023-in-review.htm).

## Appendix A

# 2023 Sewer and Water Rate Survey and Invitation

## Appendix A – 2023 Sewer and Water Rate Survey and Invitation

### Ohio EPA Sewer and Water Rate Survey 2023

Survey Deadline: October 18<sup>th</sup>, 2024

#### Introduction:

Ohio State is conducting this survey on behalf of Ohio EPA to collect utility rate data across the state of Ohio for the year 2023.

- The survey will request information regarding the following information for your community/utility for the year 2023:
  - Residential billing
  - Residential usages
  - Residential water, sewer, and stormwater rates
  - Water and sewer bill assistance programs

Please have a copy of an official water/sewer rate sheet for submission at the end of the survey. A sample rate sheet outlining the desired information will be provided for reference.

- Please submit responses for water, sewer, and stormwater rates, if applicable. We request that you coordinate internally within your organization to ensure that duplicate responses are not submitted. If you are the listed contact for multiple systems of the same type (i.e. multiple water or multiple sewer systems), please fill out an individual survey for each system.
- The survey takes about 20 minutes to complete. It is automatically saved and can be returned to at a later date. You will be sent a copy of your responses when you complete the survey. You may use the comment field on the last page to clarify any information, if applicable.
- A report on the results from last years 2022 rate survey can be found on the Office of Environmental & Financial Assistance page of the Ohio EPA website here: <https://epa.ohio.gov/divisions-and-offices/environmental-financial-assistance/reports-and-data/sewer-and-water-rate-survey>

Please submit questions regarding the survey to [ENG-OSUWaterRateSurvey@osu.edu](mailto:ENG-OSUWaterRateSurvey@osu.edu).

#### Community and Utility Information

1. Contact Name:
2. Contact Role:

## Appendix A – 2023 Sewer and Water Rate Survey and Invitation

3. Community or Utility Name:
4. City:
5. Phone Number:
6. Email Address:
7. Does your utility provide any form of bill assistance program for customers? (This can include any discounts, waiving of fees, credits, individualized payments plans, or other similar programs based on income level.):
  - Yes
  - No
8. Which of the following systems does your utility have?  
Select all that apply.
  - Drinking Water
  - Wastewater
  - Stormwater

### Customer Bill Assistance Programs (If Q7 checked “Yes”)

9. Please provide a link in the text box or provide documentation of your utilities bill assistance program below. (You are only required to submit either a link or an actual document, but you may submit both.)

### Water System Information (If Q8 checked “Drinking Water”)

10. What is the Public Water System Identification (PWSID) numbers for the systems with this rate fee structure? (Enter the seven digits of your PWSID that follow "OH". For instance, "OH0123456" would be entered as "0123456". Enter "N/A" if your customers are served by a permitted facility you do not operate.)
11. Did an increase in residential water rates become effective during 2023?
  - Yes
  - No
12. What are the time periods and demand units for your bill and usage estimates? (Please use this time period and demand units for all subsequent questions.)  
Time Period for bill: (Every other week, Monthly, Every two months, Quarterly, Semi-Annually, Annually)  
Units for Usage Estimation: (gallons (gal), thousand-gallons (kgal), cubic feet (CF), hundred-cubic feet (CCF), N/A (Uniform flat rate))

## Appendix A – 2023 Sewer and Water Rate Survey and Invitation

13. What was the average residential bill inside the corporate limit in 2023 for the time period chosen previously? (Response must be numeric and in the units for usage estimates listed previously.)
14. What was the average residential bill outside the corporate limit in 2023 for the time period chosen previously? (Response must be numeric and in the units for usage estimates listed previously. Enter "0" if not applicable.)
15. What was the average residential usage per household in 2023 for the time period chosen previously? (Response must be numeric and in the units for usage estimates listed previously.)
16. What was the minimum charge, and associated volume, for service in 2023 for the time period chosen previously? (Enter "n/a", if your system does not have a minimum charge component. Example: \$15.00 for the first 2,000 gallons.)
17. What were the tap-in fees for residential customers in 2023 inside the corporate limit? (Enter values in dollars [\$] for 3/4" tap. Enter "0" if not applicable. If your standard residential tap size does not include 3/4" taps, please note in comments on last page the size of your residential taps.)
18. What were the tap-in fees for residential customers in 2023 outside the corporate limit? (Enter values in dollars [\$] for 3/4" tap. Enter "0" if not applicable. If your standard residential tap size does not include 3/4" taps, please note in comments on last page the size of your residential taps.)
19. Please upload your rate sheet here.

This document should include:

1. The name of your utility/community
2. Any fixed charges (if applicable)
3. Any volumetric charges and their respective cutoffs (if applicable)
4. Any minimum charge (if applicable)
5. The year these rates were implemented (even if the most recent change was prior to 2023).

Note that official city/community ordinances which contain the above information are also acceptable in lieu of utility compiled rate sheets.

A sample rate sheet is provided below which notates the key pieces of information desired above. While actual rate sheets do not need to follow this example format, the same information should be presented in some form.

## Appendix A – 2023 Sewer and Water Rate Survey and Invitation

### Village of Example<sup>1</sup> Water and Sewer Rates

Reference Ordinance: XX-XX

Date Effective: January 1<sup>st</sup>, 2023<sup>5</sup>

#### Water Service:

\$15.00 fixed monthly service fee, plus:<sup>2</sup>

- \$5.00 per 1,000 gallons for usage less than 5,000 gallons<sup>3</sup>
- \$10.00 per 1,000 gallons for usage between 5,001-10,000 gallons
- \$15.00 per 1,000 gallons for usage over 10,001 gallons

\$25.00 minimum charge<sup>4</sup>

#### Wastewater Service:

\$20.00 fixed monthly service fee, plus:

- \$10.00 per 1,000 gallons for usage less than 5,000 gallons
- \$15.00 per 1,000 gallons for usage between 5,001-10,000 gallons
- \$20.00 per 1,000 gallons for usage over 10,001 gallons

\$40.00 minimum charge

#### Stormwater Service:

\$10.00 fixed monthly service fee

Please upload as a PDF (preferred), word file, or image file.

#### **Sewer System Information (If Q8 checked “Wastewater”)**

20. What is the municipal NPDES numbers for the system with this same fee structure? (Example: 1PA00004. Enter "N/A" if your customers are served by a permitted facility you do not operate.)

21. Did an increase in residential sewer rates become effective during 2023?

- Yes
- No

22. What are the time periods and demand units for your bill and usage estimates? (Please use this time period and demand units for all subsequent questions.)

Time Period for bill: (Every other week, Monthly, Every two months, Quarterly, Semi-Annually, Annually)

## Appendix A – 2023 Sewer and Water Rate Survey and Invitation

Units for Usage Estimation: (gallons (gal), thousand-gallons (kgal), cubic feet (CF), hundred-cubic feet (CCF), N/A (Uniform flat rate)

23. What was the average residential bill inside the corporate limit in 2023 for the time period chosen previously? (Response must be numeric and in the units for usage estimates listed previously.)
24. What was the average residential bill outside the corporate limit in 2023 for the time period chosen previously? (Response must be numeric and in the units for usage estimates listed previously. Enter "0" if not applicable.)
25. What was the average residential usage per household in 2023 for the time period chosen previously? (Response must be numeric and in the units for usage estimates listed previously.)
26. What was the minimum charge, and associated volume, for service in 2023 for the time period chosen previously? (Enter "n/a", if your system does not have a minimum charge component. Example: \$15.00 for the first 2,000 gallons.)
27. What were the tap-in fees for residential customers in 2023 inside the corporate limit? (Enter values in dollars [\$] for 3/4" tap. Enter "0" if not applicable. If your standard residential tap size does not include 3/4" taps, please note in comments on last page the size of your residential taps.)
28. What were the tap-in fees for residential customers in 2023 outside the corporate limit? (Enter values in dollars [\$] for 3/4" tap. Enter "0" if not applicable. If your standard residential tap size does not include 3/4" taps, please note in comments on last page the size of your residential taps.)
29. Please upload your rate sheet here.

This document should include:

1. The name of your utility/community
2. Any fixed charges (if applicable)
3. Any volumetric charges and their respective cutoffs (if applicable)
4. Any minimum charge (if applicable)
5. The year these rates were implemented (even if the most recent change was prior to 2023).

Note that official city/community ordinances which contain the above information are also acceptable in lieu of utility compiled rate sheets.

A sample rate sheet is provided below which notates the key pieces of information desired above. While actual rate sheets do not need to follow this example format, the same information should be presented in some form.

## Appendix A – 2023 Sewer and Water Rate Survey and Invitation

### Village of Example<sup>1</sup>

#### Water and Sewer Rates

Reference Ordinance: XX-XX

Date Effective: January 1<sup>st</sup>, 2023<sup>5</sup>

#### Water Service:

\$15.00 fixed monthly service fee, plus:<sup>2</sup>

- \$5.00 per 1,000 gallons for usage less than 5,000 gallons<sup>3</sup>
- \$10.00 per 1,000 gallons for usage between 5,001-10,000 gallons
- \$15.00 per 1,000 gallons for usage over 10,001 gallons

\$25.00 minimum charge<sup>4</sup>

#### Wastewater Service:

\$20.00 fixed monthly service fee, plus:

- \$10.00 per 1,000 gallons for usage less than 5,000 gallons
- \$15.00 per 1,000 gallons for usage between 5,001-10,000 gallons
- \$20.00 per 1,000 gallons for usage over 10,001 gallons

\$40.00 minimum charge

#### Stormwater Service:

\$10.00 fixed monthly service fee

Please upload as a PDF (preferred), word file, or image file.

### Stormwater System Information (If Q8 checked “Stormwater”)

30. What is your residential stormwater rate? (Example: \$5 per month or \$15 per month per acre of impervious surface.)

### Comments.

31. Please provide any additional comments, questions, or feedback here. If you reported tap-in fees that were not for a 3/4" tap, please also specify the size of your standard residential tap.

**Appendix B – 2023 Residential Sewer Rates for Varying Demand (500-8,000 gal/mo)**

**Appendix B**

**2023 Residential Sewer Rates for 4,000 gal/mo and Varying Demand**

## Appendix B – 2023 Residential Sewer Rates for Varying Demand (500-8,000 gal/mo)

Annual Sewer Rates (in 2023 \$)																	
System Name	County	Sewer Usage (gal/mo)															
		500	1,000	1,500	2,000	2,500	3,000	3,500	4,000	4,500	5,000	5,500	6,000	6,500	7,000	7,500	8,000
Ada	Hardin	473	473	473	505	536	567	598	630	661	692	723	755	786	817	848	880
Akron	Summit	130	216	301	387	472	558	643	729	814	900	985	1,071	1,156	1,242	1,327	1,413
Alliance	Stark	229	229	229	229	246	278	311	343	376	408	441	474	506	539	571	604
Amanda	Fairfield	311	311	311	311	321	330	339	348	357	367	376	385	394	404	413	422
Amherst	Lorain	300	300	300	300	300	300	300	300	300	300	330	360	390	420	450	480
Antwerp	Paulding	309	309	309	309	320	332	343	355	366	377	389	400	412	423	434	446
Archbold	Fulton	284	284	312	339	367	395	422	450	478	506	533	561	589	616	644	672
Ashley	Delaware	192	192	223	253	284	314	346	378	411	443	475	507	539	571	603	635
Ashtabula Co. DES - Ashcraft	Ashtabula	151	248	344	441	538	635	732	828	925	1,022	1,119	1,216	1,312	1,409	1,506	1,603
Ashtabula Co. DES - Coffee Creek	Ashtabula	151	248	344	441	538	635	732	828	925	1,022	1,119	1,216	1,312	1,409	1,506	1,603
Ashtabula Co. DES - Holiday Camplands	Ashtabula	151	248	344	441	538	635	732	828	925	1,022	1,119	1,216	1,312	1,409	1,506	1,603
Ashtabula Co. DES - Jefferson	Ashtabula	151	248	344	441	538	635	732	828	925	1,022	1,119	1,216	1,312	1,409	1,506	1,603
Ashtabula Co. DES - Meadowood	Ashtabula	151	248	344	441	538	635	732	828	925	1,022	1,119	1,216	1,312	1,409	1,506	1,603
Athens Co.	Athens	199	199	199	199	242	285	329	372	415	458	501	544	587	630	673	716
Avon	Lorain	71	119	166	213	261	308	356	403	450	498	545	593	640	687	735	782
Avon Lake Regional Water & Sewer	Lorain	92	121	165	209	253	296	340	384	428	472	515	559	603	647	691	734
Ayersville Water & Sewer District	Defiance	732	732	732	732	732	732	732	732	732	732	732	732	732	732	732	732
Bailey Lakes	Ashland	600	600	600	600	636	672	708	744	780	816	852	888	924	960	996	1,032
Barnesville	Belmont	171	171	257	342	407	473	538	604	669	734	800	865	931	996	1,061	1,127
Bellville	Richland	245	263	281	299	356	412	469	526	582	639	696	752	809	866	923	979
Bowerston	Harrison	601	601	601	601	647	692	738	784	830	876	922	968	1,014	1,060	1,106	1,151
Bradner	Wood	216	261	306	351	396	441	486	531	576	621	666	711	756	801	846	891
Bremen	Fairfield	171	171	216	262	308	353	399	445	491	536	582	628	673	719	765	811
Brewster	Stark	478	502	526	550	574	598	621	645	669	693	717	741	765	789	813	836
Bucyrus	Crawford	174	174	174	232	290	348	406	465	523	581	639	697	755	813	871	920
Butler	Richland	415	415	415	415	438	462	485	509	533	556	580	603	627	651	674	698
Butler County W&S - Lesourdsville	Butler	75	95	115	135	155	175	195	216	236	256	276	296	316	337	357	377
Butler County W&S - New Miami	Butler	75	95	115	135	155	175	195	216	236	256	276	296	316	337	357	377

## Appendix B – 2023 Residential Sewer Rates for Varying Demand (500-8,000 gal/mo)

Annual Sewer Rates (in 2023 \$)																	
System Name	County	Sewer Usage (gal/mo)															
		500	1,000	1,500	2,000	2,500	3,000	3,500	4,000	4,500	5,000	5,500	6,000	6,500	7,000	7,500	8,000
Butler County W&S - Queen Acres	Butler	75	95	115	135	155	175	195	216	236	256	276	296	316	337	357	377
Butler County W&S - Upper Mill Creek	Butler	75	95	115	135	155	175	195	216	236	256	276	296	316	337	357	377
Butler County W&S - Wade Mill	Butler	75	95	115	135	155	175	195	216	236	256	276	296	316	337	357	377
Cadiz	Harrison	303	303	404	504	605	705	806	906	1,007	1,107	1,208	1,308	1,409	1,509	1,610	1,710
Cambridge	Guernsey	52	104	156	208	260	312	365	417	469	521	573	625	677	729	781	833
Canal Winchester	Franklin	37	74	111	148	185	221	258	295	332	369	406	443	480	517	554	590
Canton	Stark	110	110	110	138	165	192	219	246	273	301	328	355	382	409	437	464
Cardington	Morrow	400	463	527	590	654	718	781	845	908	972	1,036	1,099	1,163	1,226	1,290	1,354
Carey	Wyandot	420	443	465	488	511	534	550	566	583	599	615	631	648	664	680	696
Carrollton	Carroll	198	198	198	198	248	297	347	396	446	495	545	594	644	693	743	792
Celina	Mercer	187	187	187	187	234	281	326	370	415	460	504	549	594	638	683	728
Centerburg	Knox	271	271	408	545	681	818	955	1,092	1,229	1,366	1,503	1,639	1,776	1,913	2,050	2,187
Chillicothe	Ross	98	98	98	130	162	193	225	257	289	321	353	384	416	448	480	512
Coldwater	Mercer	168	168	168	168	210	252	294	336	378	420	462	504	546	588	630	672
Columbus - Jackson Pike	Franklin	44	88	132	176	221	265	309	353	397	441	485	529	573	618	662	706
Columbus - Southerly	Franklin	41	82	123	164	205	245	286	327	368	409	450	491	532	573	614	654
Coshocton	Coshocton	285	285	285	285	285	304	341	379	416	453	490	528	565	602	640	677
Covington	Miami	178	203	228	253	278	303	328	353	377	402	427	452	477	502	527	552
Danville	Knox	420	420	420	420	456	492	528	564	600	636	672	708	744	780	816	852
Dayton	Montgomery	112	133	154	175	196	217	238	259	280	301	322	343	364	385	406	427
Delaware County Regional Sewer District - Alum Creek	Delaware	462	462	462	462	462	462	462	462	462	462	462	462	462	462	462	462
Delaware County Regional Sewer District - Hoover Woods	Delaware	462	462	462	462	462	462	462	462	462	462	462	462	462	462	462	462
Delaware County Regional Sewer District - Lower Scioto	Delaware	462	462	462	462	462	462	462	462	462	462	462	462	462	462	462	462
Delaware County Regional Sewer District - OECC	Delaware	462	462	462	462	462	462	462	462	462	462	462	462	462	462	462	462
Delaware County Regional Sewer District - Scioto Hills	Delaware	462	462	462	462	462	462	462	462	462	462	462	462	462	462	462	462
Delphos	Allen	191	276	360	445	529	613	698	782	866	951	1,035	1,120	1,204	1,288	1,373	1,457

## Appendix B – 2023 Residential Sewer Rates for Varying Demand (500-8,000 gal/mo)

Annual Sewer Rates (in 2023 \$)																	
System Name	County	Sewer Usage (gal/mo)															
		500	1,000	1,500	2,000	2,500	3,000	3,500	4,000	4,500	5,000	5,500	6,000	6,500	7,000	7,500	8,000
Dresden	Muskingum	179	179	198	217	236	255	274	293	312	331	349	368	387	406	425	444
Dunkirk	Hardin	612	612	612	612	624	637	649	662	674	686	699	711	724	736	749	761
Earnhart Hill Water Dist.	Pickaway	385	457	530	602	675	747	820	892	965	1,037	1,110	1,182	1,255	1,328	1,400	1,473
Edgerton	Williams	259	279	299	318	338	358	378	398	417	437	457	477	497	516	536	556
Elida	Allen	167	167	167	185	216	247	277	308	338	369	444	548	652	756	860	964
Elmore	Ottawa	213	213	214	265	317	369	421	473	525	577	629	681	730	778	827	876
Elyria	Lorain	266	352	437	523	609	695	781	867	952	1,038	1,124	1,210	1,296	1,381	1,467	1,553
Englewood	Montgomery	146	146	146	146	146	185	223	262	301	340	379	418	457	496	535	574
EORWA	Belmont	348	348	348	348	348	364	395	426	457	488	520	551	582	613	644	676
Erie County Water District "B"	Erie	219	219	219	270	321	371	422	473	524	575	625	676	727	778	828	879
Fairfield	Butler	225	225	225	225	225	225	262	300	337	374	412	449	487	524	562	599
Farmersville	Montgomery	453	453	453	453	453	459	493	527	562	596	630	664	698	733	767	801
Fayette	Fulton	199	199	251	304	356	408	460	512	565	617	669	721	773	826	878	930
Findlay	Hancock	252	252	253	267	281	296	310	324	339	353	367	382	396	411	425	439
Flushing	Belmont	420	420	420	420	420	420	420	438	456	474	492	510	528	546	564	582
Fostoria	Seneca	190	219	249	278	308	337	367	396	426	455	485	514	544	573	603	632
Frazeysburg	Muskingum	444	695	744	794	818	841	865	889	912	936	960	983	1,007	1,031	1,054	1,078
Fredericktown	Knox	380	380	380	490	600	711	821	931	1,041	1,151	1,261	1,372	1,482	1,592	1,702	1,812
Gambier	Knox	133	133	200	266	333	399	466	532	599	665	732	798	865	932	998	1,065
Garrettsville	Portage	632	632	632	632	632	632	632	632	632	632	632	632	632	632	632	632
Geneva	Ashtabula	189	189	189	252	315	379	442	505	568	631	694	757	820	884	947	1,010
Girard	Trumbull	135	135	135	180	225	270	315	360	406	451	496	541	586	631	676	721
Gnadenhutten	Tuscarawas	306	306	306	306	306	306	306	306	306	306	312	318	324	330	336	342
Greenfield	Highland	380	380	413	447	491	535	579	623	668	712	756	800	844	889	933	977
Greenville	Darke	201	201	201	201	224	269	314	359	403	448	493	538	583	628	672	717
Hamler	Henry	516	516	567	618	669	720	771	822	873	924	975	1,026	1,077	1,128	1,179	1,230
Hartford	Licking	921	921	921	921	921	921	921	921	921	921	921	921	921	921	921	921
Hayesville	Ashland	155	191	226	261	296	332	367	402	438	473	508	543	579	614	649	685

## Appendix B – 2023 Residential Sewer Rates for Varying Demand (500-8,000 gal/mo)

Annual Sewer Rates (in 2023 \$)																	
System Name	County	Sewer Usage (gal/mo)															
		500	1,000	1,500	2,000	2,500	3,000	3,500	4,000	4,500	5,000	5,500	6,000	6,500	7,000	7,500	8,000
Hiram	Portage	378	378	378	378	431	484	537	590	642	695	748	801	854	906	959	1,012
Holmes County Sewer District - Berlin	Holmes	662	662	662	662	662	662	662	662	662	662	662	662	662	662	662	662
Holmes County Sewer District - Mt. Hope	Holmes	662	662	662	662	662	662	662	662	662	662	662	662	662	662	662	662
Holmes County Sewer District - October Hills	Holmes	662	662	662	662	662	662	662	662	662	662	662	662	662	662	662	662
Holmes County Sewer District - Training Center	Holmes	662	662	662	662	662	662	662	662	662	662	662	662	662	662	662	662
Holmes County Sewer District - Walnut Creek	Holmes	662	662	662	662	662	662	662	662	662	662	662	662	662	662	662	662
Holmes County Sewer District - Winesburg	Holmes	662	662	662	662	662	662	662	662	662	662	662	662	662	662	662	662
Hopedale	Harrison	120	120	120	120	120	120	120	120	120	120	120	120	120	120	120	120
Jackson	Jackson	231	312	393	474	555	636	718	799	880	961	1,042	1,123	1,204	1,285	1,367	1,448
Jackson Center	Shelby	618	618	618	618	662	705	749	792	836	879	920	961	1,002	1,043	1,085	1,126
Jeffersonville	Fayette	821	821	821	821	839	857	875	893	911	929	947	965	983	1,001	1,019	1,037
Johnstown	Licking	134	134	134	134	169	204	240	275	310	345	380	416	451	486	521	557
Kent	Portage	237	237	237	237	264	316	369	422	475	527	580	633	686	738	791	844
Kenton	Hardin	421	439	475	511	548	584	620	656	692	728	765	801	837	873	909	945
Knox Co. - Bladensburg	Knox	388	388	388	388	388	388	388	388	388	388	388	388	388	388	388	388
Knox Co. - Little Jelloway Creek	Knox	388	388	388	388	388	388	388	388	388	388	388	388	388	388	388	388
Knox Co. - Pleasant View Acres	Knox	388	388	388	388	388	388	388	388	388	388	388	388	388	388	388	388
Lakewood	Cuyahoga	79	158	236	315	394	473	551	630	709	788	866	945	1,024	1,103	1,181	1,260
Lancaster	Fairfield	306	363	420	478	535	592	649	707	764	821	879	936	993	1,050	1,108	1,165
Lebanon	Warren	247	247	247	247	247	282	316	350	384	418	452	486	520	554	588	622
Leetonia	Columbiana	363	363	394	425	456	487	518	549	579	610	641	672	703	734	765	796
Lewisburg	Preble	372	372	372	372	372	372	401	429	458	486	515	543	572	600	629	657
Lexington	Richland	244	244	244	287	330	374	417	461	504	548	591	635	678	721	765	808
Liberty Center	Henry	271	271	319	398	478	557	637	716	796	875	955	1,034	1,114	1,193	1,273	1,352
Logan	Hocking	340	340	340	340	390	440	490	540	591	641	691	741	792	842	892	942
Louisville	Stark	176	176	177	223	270	316	363	403	437	471	505	539	574	608	642	666
Lowell	Washington	415	415	469	523	576	630	684	738	791	845	899	953	1,006	1,060	1,114	1,168
Lucas County Sanitary Engineers	Pickaway	318	318	318	318	318	318	318	318	318	318	318	318	318	318	318	318

## Appendix B – 2023 Residential Sewer Rates for Varying Demand (500-8,000 gal/mo)

Annual Sewer Rates (in 2023 \$)																	
System Name	County	Sewer Usage (gal/mo)															
		500	1,000	1,500	2,000	2,500	3,000	3,500	4,000	4,500	5,000	5,500	6,000	6,500	7,000	7,500	8,000
Franklin	Warren	50	101	151	202	252	303	353	404	454	505	555	606	656	707	757	808
Silver Lake	Summit	506	555	605	655	705	755	804	854	904	954	1,004	1,053	1,103	1,153	1,203	1,253
Maumee	Lucas	302	302	302	302	378	454	529	605	680	756	832	907	983	1,058	1,134	1,210
Wooster	Wayne	166	166	166	166	182	213	245	276	308	340	371	403	434	466	497	529
South Lebanon	Warren	450	450	450	450	450	450	467	483	500	517	533	550	567	583	600	617
Trotwood	Montgomery	170	202	234	266	298	330	362	394	426	458	490	522	554	586	618	650
Tuppers Plains Regional Sewer District	Meigs	636	636	636	636	636	636	636	636	636	636	636	636	636	636	636	636
Rushville	Fairfield	703	703	703	703	703	703	703	703	703	703	703	703	703	703	703	703
Germantown	Montgomery	179	179	236	292	349	405	462	518	575	631	688	744	801	857	914	970
Warren County Water & Sewer	Warren	168	168	168	168	168	168	196	224	252	280	308	336	364	392	420	448
North Hampton	Clark	1,020	1,020	1,020	1,020	1,020	1,020	1,020	1,020	1,020	1,020	1,020	1,020	1,020	1,020	1,020	1,020
Sheffield	Lorain	125	156	187	218	249	280	311	343	374	405	436	467	498	529	560	592
Mansfield	Richland	111	163	215	267	319	372	424	476	528	580	633	685	737	789	842	894
Marietta	Washington	484	484	484	501	567	633	698	764	830	895	961	1,027	1,092	1,158	1,224	1,290
Marysville	Union	255	255	255	313	370	427	485	542	600	657	714	772	829	887	944	1,002
McConnelsville	Morgan	548	548	548	548	578	608	638	668	698	728	758	788	818	848	878	908
Medina Co. Northwest	Medina	423	423	423	423	423	423	423	423	423	423	423	423	423	423	423	423
Medina Co. Sharon-Wadsworth	Medina	423	423	423	423	423	423	423	423	423	423	423	423	423	423	423	423
Medina Co. Southern	Medina	423	423	423	423	423	423	423	423	423	423	423	423	423	423	423	423
Middlefield	Geauga	281	281	281	281	327	372	418	463	509	555	600	646	691	737	783	828
Minerva	Stark	134	134	134	153	181	210	238	267	295	324	348	372	396	421	445	469
Minster	Auglaize	126	138	159	180	201	222	243	264	285	306	327	348	369	390	411	432
Montpelier	Williams	258	258	258	258	258	258	258	258	258	258	258	258	258	258	272	290
Mount Gilead	Morrow	448	448	448	448	466	502	538	573	609	645	681	716	752	788	824	859
Mount Orab	Brown	288	288	288	288	353	418	482	547	612	677	738	799	860	922	983	1,044
Mount Victory	Hardin	320	341	361	382	402	422	443	463	484	504	524	545	565	586	606	626
Napoleon	Henry	422	450	505	559	614	669	724	779	833	888	943	998	1,052	1,107	1,162	1,217
New Bremen	Auglaize	168	168	168	199	230	261	292	323	354	384	415	446	477	508	539	570

## Appendix B – 2023 Residential Sewer Rates for Varying Demand (500-8,000 gal/mo)

Annual Sewer Rates (in 2023 \$)																	
System Name	County	Sewer Usage (gal/mo)															
		500	1,000	1,500	2,000	2,500	3,000	3,500	4,000	4,500	5,000	5,500	6,000	6,500	7,000	7,500	8,000
New Holland	Pickaway	437	483	528	574	620	665	711	<b>757</b>	802	848	893	939	985	1,030	1,076	1,122
New Lexington	Perry	441	441	486	531	576	620	665	<b>710</b>	755	799	844	889	934	978	1,023	1,068
New Richmond	Clermont	201	201	201	201	223	268	313	<b>357</b>	402	447	491	536	581	625	670	715
New Waterford	Columbiana	471	471	471	471	543	615	687	<b>759</b>	831	903	975	1,047	1,119	1,191	1,263	1,335
Newcomerstown	Tuscarawas	145	145	145	193	241	289	338	<b>386</b>	434	482	531	579	627	675	724	772
Niles	Trumbull	121	182	244	305	366	428	489	<b>550</b>	612	673	735	796	857	919	980	1,041
North Lewisburg	Champaign	452	452	452	452	452	452	528	<b>603</b>	679	754	830	905	980	1,056	1,131	1,207
Northeast Ohio Regional Sewer District	Cuyahoga	219	311	404	497	590	682	775	<b>868</b>	960	1,053	1,146	1,239	1,331	1,424	1,517	1,609
Northeast Ohio Regional Sewer District - Easterly	Cuyahoga	219	311	404	497	590	682	775	<b>868</b>	960	1,053	1,146	1,239	1,331	1,424	1,517	1,609
Northeast Ohio Regional Sewer District - Southerly	Cuyahoga	219	311	404	497	590	682	775	<b>868</b>	960	1,053	1,146	1,239	1,331	1,424	1,517	1,609
Northeast Ohio Regional Sewer District - Westerly	Cuyahoga	219	311	404	497	590	682	775	<b>868</b>	960	1,053	1,146	1,239	1,331	1,424	1,517	1,609
Northwestern W & S - Co Rd	Henry	225	254	282	310	339	367	396	<b>424</b>	452	481	509	538	566	594	623	651
Oberlin	Lorain	251	251	251	251	280	335	391	<b>447</b>	503	559	615	671	727	783	839	894
Ontario	Richland	145	190	285	380	475	570	665	<b>759</b>	854	949	1,044	1,139	1,234	1,329	1,424	1,519
Orrville	Wayne	195	225	256	287	317	348	378	<b>409</b>	439	470	500	531	562	592	623	653
Ottawa Co.	Ottawa	456	456	456	456	456	456	456	<b>456</b>	456	456	456	456	456	456	456	456
Oxford	Butler	80	112	145	178	210	243	276	<b>309</b>	341	374	407	439	472	505	538	570
Painesville	Lake	276	276	276	276	276	276	322	<b>368</b>	414	460	506	552	598	645	691	737
Pemberville	Wood	255	255	289	323	358	392	426	<b>460</b>	494	529	563	597	631	665	700	734
Plymouth	Richland	653	653	653	653	686	719	752	<b>785</b>	818	851	884	917	950	983	1,016	1,049
Port Clinton	Ottawa	553	553	553	553	607	714	820	<b>926</b>	1,033	1,139	1,246	1,352	1,459	1,565	1,671	1,778
Powhatan Point	Belmont	540	540	540	540	540	540	540	<b>540</b>	540	540	540	540	540	540	540	540
Put-In-Bay	Ottawa	269	269	269	269	313	358	402	<b>447</b>	491	536	580	625	692	759	826	893
Ravenna	Portage	277	330	382	435	488	540	593	<b>646</b>	698	751	804	856	909	962	1,015	1,067
Republic	Seneca	497	497	497	497	497	497	523	<b>548</b>	574	599	625	650	676	701	727	752
Reynoldsburg	Franklin	64	127	191	255	319	382	446	<b>510</b>	573	637	701	765	828	892	956	1,020
Rock Creek	Ashtabula	536	536	596	656	716	776	836	<b>896</b>	956	1,016	1,076	1,136	1,196	1,256	1,316	1,376

## Appendix B – 2023 Residential Sewer Rates for Varying Demand (500-8,000 gal/mo)

Annual Sewer Rates (in 2023 \$)																	
System Name	County	Sewer Usage (gal/mo)															
		500	1,000	1,500	2,000	2,500	3,000	3,500	4,000	4,500	5,000	5,500	6,000	6,500	7,000	7,500	8,000
Roseville	Muskingum	306	306	306	338	416	493	571	<b>648</b>	725	803	880	958	1,035	1,113	1,190	1,268
Sabina	Clinton	304	304	342	380	418	455	493	<b>531</b>	569	606	644	682	719	757	795	833
Scioto Co. Sanitary - Lucasville	Scioto	369	369	369	369	431	492	548	<b>605</b>	659	714	760	806	844	881	918	955
Scioto Co. Sanitary - Minford	Scioto	369	369	369	369	431	492	548	<b>605</b>	659	714	760	806	844	881	918	955
Scioto Co. Sanitary - Scaff-Starrett	Scioto	369	369	369	369	431	492	548	<b>605</b>	659	714	760	806	844	881	918	955
Scioto Co. Sanitary - South Webster	Scioto	369	369	369	369	431	492	548	<b>605</b>	659	714	760	806	844	881	918	955
Scioto Co. Sanitary - Tanglewood	Scioto	369	369	369	369	431	492	548	<b>605</b>	659	714	760	806	844	881	918	955
Scioto Co. Sanitary - West Portsmouth	Scioto	369	369	369	369	431	492	548	<b>605</b>	659	714	760	806	844	881	918	955
Scioto Co. Sanitary - Wheelersburg	Scioto	369	369	369	369	431	492	548	<b>605</b>	659	714	760	806	844	881	918	955
Seaman	Adams	210	210	210	210	249	288	327	<b>366</b>	405	444	483	522	561	600	639	678
Shelby Municipal Utilities	Richland	128	154	180	207	233	259	285	<b>312</b>	338	364	390	417	443	469	495	521
Sherwood	Defiance	162	206	249	292	335	378	422	<b>465</b>	508	551	594	638	681	724	767	810
Sidney	Shelby	248	279	310	341	372	403	435	<b>466</b>	497	528	559	590	621	652	683	714
Somerset	Perry	504	504	504	504	504	504	504	<b>504</b>	504	504	504	504	504	504	504	504
South Solon	Madison	972	972	972	972	972	972	972	<b>972</b>	972	972	972	972	972	972	972	972
Southwest Licking Water & Sewer	Licking	478	478	478	478	540	601	663	<b>725</b>	786	848	910	972	1,033	1,095	1,157	1,218
Spencer	Medina	508	508	508	508	542	576	610	<b>644</b>	678	712	746	780	814	848	882	916
Spencerville	Allen	367	367	367	367	434	502	570	<b>637</b>	705	773	840	908	976	1,043	1,111	1,179
Springfield	Clark	308	308	308	353	399	444	489	<b>534</b>	579	624	669	715	760	805	850	895
St. Clairsville	Belmont	322	322	322	322	407	492	577	<b>662</b>	752	843	933	1,023	1,113	1,203	1,298	1,393
St. Henry	Mercer	120	120	120	120	145	169	194	<b>218</b>	243	268	292	317	341	366	391	415
Steubenville	Jefferson	424	424	424	424	497	570	644	<b>717</b>	790	863	936	1,009	1,082	1,155	1,228	1,301
Stratton	Jefferson	24	24	24	24	24	24	24	<b>24</b>	24	24	24	24	24	24	24	24
Swanton	Fulton	371	371	371	371	436	501	566	<b>630</b>	695	760	825	890	955	1,020	1,085	1,150
Thornville	Perry	570	570	570	570	570	570	570	<b>600</b>	630	660	690	720	750	780	810	840
Tiltonsville	Jefferson	211	211	262	313	365	416	467	<b>518</b>	570	621	672	724	775	826	878	929
Tipp City	Miami	89	89	89	89	89	89	100	<b>111</b>	122	134	145	156	167	178	189	201
Toledo	Lucas	123	170	217	264	311	358	405	<b>452</b>	499	546	593	640	687	734	781	828

## Appendix B – 2023 Residential Sewer Rates for Varying Demand (500-8,000 gal/mo)

Annual Sewer Rates (in 2023 \$)																	
System Name	County	Sewer Usage (gal/mo)															
		500	1,000	1,500	2,000	2,500	3,000	3,500	4,000	4,500	5,000	5,500	6,000	6,500	7,000	7,500	8,000
Toronto	Jefferson	336	336	336	336	417	498	579	<b>660</b>	741	822	903	984	1,065	1,146	1,227	1,308
Trenton	Butler	219	219	219	219	249	280	310	<b>340</b>	370	401	431	461	491	522	552	582
Troy	Miami	114	114	114	149	184	219	254	<b>289</b>	324	359	394	429	463	498	533	568
Twin City Water & Sewer District	Tuscarawas	360	360	360	360	381	402	423	<b>444</b>	465	486	486	486	486	486	486	486
Twinsburg	Summit	240	240	240	240	240	240	240	<b>240</b>	240	240	240	240	240	240	240	240
Union City	Darke	229	229	229	229	230	262	295	<b>327</b>	360	393	425	458	491	523	556	589
Upper Hocking	Fairfield	306	363	420	478	535	592	649	<b>707</b>	764	821	879	936	993	1,050	1,108	1,165
Urbana	Champaign	176	211	246	280	315	350	385	<b>420</b>	454	489	524	559	594	628	663	698
Utica	Licking	154	156	234	313	391	469	547	<b>625</b>	703	781	859	937	1,016	1,094	1,172	1,250
Van Wert	Van Wert	157	157	157	157	158	225	291	<b>357</b>	423	489	556	622	688	754	820	886
Versailles	Darke	204	233	262	291	320	349	377	<b>406</b>	435	464	493	522	551	580	608	637
Waverly	Pike	158	158	163	178	193	208	223	<b>238</b>	253	268	283	298	313	328	343	358
Wayne	Wood	310	353	396	439	482	524	567	<b>610</b>	653	696	739	782	825	868	911	954
Waynoka Regional WSD	Brown	195	195	195	233	271	309	348	<b>386</b>	424	462	500	538	576	614	652	690
West Manchester	Preble	558	558	558	558	558	558	570	<b>582</b>	594	606	618	630	648	666	684	702
West Milton	Miami	139	186	233	281	328	375	423	<b>470</b>	517	565	612	659	707	754	801	849
West Salem	Wayne	453	453	453	453	453	453	453	<b>453</b>	453	467	480	494	508	521	535	549
Willard	Huron	278	278	332	385	439	493	546	<b>600</b>	654	707	761	815	869	922	976	1,030
Woodsfield	Monroe	408	408	408	408	488	567	647	<b>726</b>	806	885	965	1,044	1,124	1,204	1,283	1,363
Woodville	Sandusky	456	456	456	456	526	596	665	<b>735</b>	805	874	944	1,014	1,083	1,153	1,223	1,292
Youngstown	Mahoning	437	437	437	437	437	437	445	<b>509</b>	572	636	700	763	827	890	954	1,018
Zanesville	Muskingum	247	281	315	349	383	418	452	<b>486</b>	520	554	588	622	656	690	724	758

## Appendix C

### 2023 Residential Water Rates for 4,000 gal/mo and Varying Demand

## Appendix C – 2023 Residential Water Rates for Varying Demand (500-8,000 gal/mo)

Annual Drinking Water Rates (in 2023 \$)																	
System Name	County	Drinking Water Usage (gal/mo)															
		500	1,000	1,500	2,000	2,500	3,000	3,500	4,000	4,500	5,000	5,500	6,000	6,500	7,000	7,500	8,000
Ada	Hardin	168	168	168	212	256	299	343	387	431	475	519	563	607	650	694	738
Akron	Summit	73	97	122	146	171	195	220	244	269	293	318	343	367	392	416	441
Alliance	Stark	229	229	229	229	250	292	334	375	417	459	500	542	584	626	667	709
Amanda	Fairfield	774	774	774	774	822	870	918	966	1,014	1,062	1,110	1,158	1,206	1,254	1,302	1,350
Amherst	Lorain	79	79	79	79	79	79	97	115	133	151	170	188	206	224	242	260
Antwerp	Paulding	420	420	420	420	420	420	420	420	420	420	420	420	449	483	518	552
Apple Creek	Wayne	125	125	125	125	125	125	148	171	194	217	240	263	286	309	332	355
Archbold	Fulton	337	337	361	385	409	433	457	481	505	528	552	576	600	624	648	672
Ashley	Delaware	211	211	269	326	384	442	499	557	615	673	730	788	846	903	961	1,019
Ashtabula County DES	Ashtabula	226	307	389	471	552	634	716	801	890	978	1,067	1,156	1,245	1,334	1,422	1,511
Ashville	Pickaway	28	57	85	114	142	171	199	228	256	284	313	341	370	398	427	455
Athens Co.	Athens	353	353	353	353	432	511	590	669	748	827	906	985	1,065	1,144	1,223	1,302
Avon	Lorain	92	123	155	187	218	250	282	313	345	377	408	440	472	504	535	567
Avon Lake Regional Water & Sewer	Lorain	26	34	46	59	71	84	96	109	121	134	146	159	171	184	196	209
Ayersville Water & Sewer District	Defiance	666	666	666	666	780	894	1,008	1,122	1,236	1,350	1,464	1,578	1,692	1,806	1,920	2,034
Bailey Lakes	Ashland	600	600	600	600	636	672	708	744	780	816	852	888	924	960	996	1,032
Bainbridge	Ross	305	305	305	305	305	305	346	387	428	469	510	552	593	634	675	716
Barnesville	Belmont	108	108	162	216	256	296	336	376	416	455	495	535	575	615	655	695
Bellbrook	Greene	107	107	130	154	177	200	224	247	271	294	317	341	364	388	411	434
Bellevue	Huron	151	186	222	257	293	328	364	400	435	471	506	542	578	613	649	684
Bellville	Richland	190	208	226	244	287	329	372	415	458	501	544	587	630	673	716	758
Belmont County W&S	Belmont	356	356	356	356	452	547	643	739	841	943	1,045	1,148	1,250	1,352	1,461	1,570
Berea	Cuyahoga	144	144	144	165	185	206	227	247	268	289	309	330	351	371	392	413
Bowerston	Harrison	427	427	427	427	441	455	470	484	499	513	527	542	556	571	585	599
Bradner	Wood	322	371	421	471	521	571	620	670	720	770	820	869	919	969	1,019	1,069
Bremen	Fairfield	125	125	153	182	210	238	266	295	323	351	379	408	436	464	492	521
Buckeye Lake	Licking	459	459	459	459	525	591	657	723	789	855	921	987	1,053	1,119	1,185	1,251
Buckeye Water & Sewer District	Columbiana	371	371	371	371	432	493	554	615	676	737	798	859	920	981	1,042	1,103

## Appendix C – 2023 Residential Water Rates for Varying Demand (500-8,000 gal/mo)

Annual Drinking Water Rates (in 2023 \$)																	
System Name	County	Drinking Water Usage (gal/mo)															
		500	1,000	1,500	2,000	2,500	3,000	3,500	4,000	4,500	5,000	5,500	6,000	6,500	7,000	7,500	8,000
Bucyrus	Crawford	276	276	276	353	430	507	583	651	709	767	826	884	943	1,001	1,059	1,118
Butler	Richland	415	415	415	415	438	462	485	509	533	556	580	603	627	651	674	698
Cadiz	Harrison	480	480	480	480	555	630	705	780	855	930	1,005	1,080	1,155	1,230	1,305	1,380
Cambridge	Guernsey	48	96	145	193	241	289	337	385	434	482	530	578	626	675	723	771
Canal Winchester	Franklin	39	78	116	155	194	233	271	310	349	388	426	465	504	543	581	620
Canton	Stark	80	80	80	95	119	142	166	190	214	237	261	285	309	332	356	380
Cardington	Morrow	434	484	534	584	634	684	733	783	833	883	933	983	1,033	1,083	1,133	1,183
Carey	Wyandot	273	273	273	273	273	273	295	317	338	360	382	404	426	447	469	491
Carrollton	Carroll	180	180	180	180	210	240	270	300	330	360	390	420	450	480	510	540
Celina	Mercer	381	381	381	381	381	381	425	469	514	558	602	646	690	734	778	822
Chillicothe	Ross	98	98	98	136	174	212	250	289	327	365	403	441	479	517	555	593
Cincinnati	Hamilton	128	155	183	211	239	267	295	322	350	378	406	434	462	489	517	545
Circleville	Pickaway	101	141	182	223	263	304	345	385	426	467	507	548	589	629	670	711
Clermont	Clermont	109	147	186	224	263	301	340	378	417	455	494	532	571	609	648	686
Cleveland	Cuyahoga	128	145	163	193	223	252	282	312	342	372	401	431	461	491	521	550
Coldwater	Mercer	192	192	192	192	240	288	336	384	432	480	528	576	624	672	720	768
Columbus	Franklin	91	91	152	271	390	510	629	748	868	987	1,106	1,226	1,345	1,464	1,584	1,703
Coshocton	Coshocton	266	266	266	266	266	286	326	365	404	443	483	522	561	600	639	679
Covington	Miami	368	392	417	441	466	491	515	540	564	589	614	638	685	732	779	826
Danville	Knox	636	636	636	636	659	682	705	728	752	775	798	821	844	867	890	913
Dayton	Montgomery	212	212	212	212	212	212	212	212	212	212	212	212	212	212	212	212
Deersville	Harrison	516	516	516	516	558	601	643	685	728	770	807	845	882	919	957	994
Del-Co Water	Delaware	144	144	144	198	252	306	347	388	428	469	510	551	592	632	673	714
Delphos	Allen	235	309	384	459	534	608	683	758	833	907	982	1,057	1,132	1,206	1,281	1,356
Dover	Tuscarawas	164	164	164	164	164	164	164	184	208	231	254	277	300	323	346	369
Dresden	Muskingum	233	233	252	271	290	309	328	347	366	384	403	422	441	460	479	498
Dunkirk	Hardin	369	369	369	369	396	423	450	477	503	530	559	588	617	646	675	703
Earnhart Hill Water Dist.	Pickaway	264	264	317	370	423	475	528	581	634	687	740	793	845	898	951	1,004

## Appendix C – 2023 Residential Water Rates for Varying Demand (500-8,000 gal/mo)

Annual Drinking Water Rates (in 2023 \$)																	
System Name	County	Drinking Water Usage (gal/mo)															
		500	1,000	1,500	2,000	2,500	3,000	3,500	4,000	4,500	5,000	5,500	6,000	6,500	7,000	7,500	8,000
East Canton	Stark	419	419	419	419	503	588	673	757	842	927	1,011	1,096	1,181	1,265	1,350	1,435
Eaton	Preble	195	195	209	238	268	298	327	357	387	417	446	476	506	535	565	595
Edgerton	Williams	202	225	247	270	292	315	337	360	382	405	423	441	460	478	496	515
Elida	Allen	331	331	331	402	521	639	672	704	737	769	802	834	867	900	932	965
Elmore	Ottawa	189	189	189	240	291	341	392	443	493	544	595	645	688	731	774	817
Elyria	Lorain	46	83	158	232	306	381	455	530	604	678	753	827	901	976	1,050	1,124
Englewood	Montgomery	170	170	170	170	170	204	238	272	306	340	374	408	442	476	510	544
Enon	Clark	312	312	312	312	312	312	312	312	312	312	312	312	312	312	336	360
Erie County - Vermillion	Erie	266	299	332	365	398	431	465	498	531	564	606	647	689	730	772	813
Erie County Water District "B"	Erie	231	231	231	270	309	348	386	425	464	502	541	580	619	657	696	735
Fairfield	Butler	195	195	195	195	195	195	225	255	285	315	345	375	405	435	464	494
Fairport Harbor	Lake	291	291	291	291	316	366	415	465	514	564	613	663	712	762	811	860
Farmersville	Montgomery	359	359	359	359	359	364	397	429	462	494	526	559	591	624	656	688
Fayette	Fulton	119	119	178	237	297	356	415	475	534	593	653	712	771	831	890	949
Findlay	Hancock	102	102	102	123	145	166	188	209	230	252	273	295	316	337	359	380
Flushing	Belmont	468	468	468	468	468	468	468	585	702	819	936	1,053	1,170	1,287	1,404	1,521
Fostoria	Seneca	135	163	192	219	246	274	301	328	355	382	410	437	464	491	518	546
Franklin	Warren	37	74	111	148	185	223	260	297	334	371	408	445	482	519	556	593
Frazeysburg	Muskingum	348	348	404	460	482	504	527	549	571	594	616	638	660	683	705	727
Fredericktown	Knox	67	89	110	132	154	175	197	218	240	262	283	305	326	348	370	391
Galion	Crawford	173	243	301	356	410	464	518	572	627	681	735	789	844	898	952	1,006
Gallia Co. Rural Water	Gallia	288	288	288	288	343	397	452	506	557	607	657	707	757	807	857	907
Gambier	Knox	149	149	223	297	371	446	520	594	669	743	817	891	966	1,040	1,114	1,188
Garrettsville	Portage	222	222	239	289	339	388	438	488	538	587	637	687	736	786	836	886
Geneva	Ashtabula	62	125	187	249	312	374	436	499	561	623	685	748	810	872	935	997
Germantown	Montgomery	284	284	284	284	284	284	321	358	395	432	470	507	544	581	618	655
Girard	Trumbull	223	223	223	290	357	424	491	558	625	692	752	812	872	933	993	1,053
Gnadenhutten	Tuscarawas	216	216	216	216	216	216	216	216	216	216	222	228	234	240	246	252

## Appendix C – 2023 Residential Water Rates for Varying Demand (500-8,000 gal/mo)

Annual Drinking Water Rates (in 2023 \$)																	
System Name	County	Drinking Water Usage (gal/mo)															
		500	1,000	1,500	2,000	2,500	3,000	3,500	4,000	4,500	5,000	5,500	6,000	6,500	7,000	7,500	8,000
Granville	Licking	56	56	94	131	169	206	244	282	319	357	394	432	469	507	544	582
Greenfield	Highland	233	233	251	269	319	370	421	471	522	572	623	674	724	775	825	876
Greenville	Darke	235	235	235	235	257	300	344	387	430	474	517	560	604	647	690	734
Greenwich	Huron	209	209	209	209	240	270	300	331	361	391	422	452	483	513	543	574
Hamler	Henry	480	480	531	582	633	684	735	786	837	888	939	990	1,041	1,092	1,143	1,194
Hanley	Richland	400	400	400	400	400	400	400	400	400	400	400	400	400	400	400	400
Hayesville	Ashland	540	540	540	558	576	594	612	630	648	666	684	702	720	738	756	774
Hebron	Licking	36	36	74	111	149	186	224	261	299	336	374	411	449	486	524	561
Hiram	Portage	185	185	277	369	460	552	644	736	828	919	1,011	1,103	1,195	1,287	1,378	1,470
Hopedale	Harrison	127	127	127	127	127	127	157	187	217	247	277	307	338	368	398	428
Hubbard	Trumbull	236	264	292	320	347	375	403	431	458	486	514	542	569	597	625	653
Huber Heights	Montgomery	234	258	283	307	331	356	380	404	429	453	477	501	526	550	574	599
Hudson	Summit	189	215	242	268	294	320	346	372	398	424	450	476	502	528	554	580
Huron	Erie	241	263	285	306	328	350	372	394	416	438	460	482	504	525	547	569
Jackson	Jackson	176	176	176	176	237	298	359	420	481	542	603	664	725	786	846	907
Jackson Center	Shelby	516	516	516	516	551	585	620	654	689	723	756	789	821	854	887	920
Jacksonville	Athens	519	519	519	519	612	705	798	891	984	1,077	1,170	1,263	1,356	1,449	1,542	1,635
Jefferson County W and S	Franklin	405	405	405	405	465	525	585	645	705	765	825	885	945	1,005	1,065	1,125
Jeffersonville	Fayette	421	421	421	421	433	445	457	469	481	493	505	517	529	541	553	565
Johnstown	Licking	134	134	134	134	169	204	240	275	310	345	380	416	451	486	521	557
Kent	Portage	169	169	169	169	188	225	263	301	338	376	413	451	488	526	564	601
Kenton	Hardin	319	336	369	401	434	467	500	532	565	598	630	663	696	729	761	794
Knox County	Knox	242	242	242	242	242	242	242	242	267	292	318	343	368	393	418	444
Lakeview	Logan	386	411	437	462	488	513	539	564	590	615	641	666	692	717	743	768
Lakewood	Cuyahoga	69	138	207	276	344	413	482	551	620	689	758	827	896	965	1,033	1,102
Lancaster	Fairfield	180	228	276	323	371	419	466	514	562	609	657	705	752	800	847	895
Leading Creek Conservancy District	Meigs	462	462	462	462	531	600	669	738	807	876	938	1,000	1,062	1,124	1,185	1,247
Le-Ax Water Dist.	Athens	255	255	321	388	454	521	587	654	720	786	853	919	986	1,052	1,118	1,185

## Appendix C – 2023 Residential Water Rates for Varying Demand (500-8,000 gal/mo)

Annual Drinking Water Rates (in 2023 \$)																	
System Name	County	Drinking Water Usage (gal/mo)															
		500	1,000	1,500	2,000	2,500	3,000	3,500	4,000	4,500	5,000	5,500	6,000	6,500	7,000	7,500	8,000
Lebanon	Warren	243	243	243	243	243	282	321	<b>360</b>	399	437	476	515	554	593	631	670
Leetonia	Columbiana	400	400	462	524	586	648	709	<b>771</b>	833	895	957	1,019	1,081	1,143	1,205	1,267
Lewisburg	Preble	348	348	348	348	348	348	377	<b>405</b>	434	462	491	519	548	576	605	633
Lexington	Richland	244	244	244	287	330	374	417	<b>461</b>	504	548	591	635	678	721	765	808
Lexview Water and Park Board	Richland	420	420	420	420	420	420	420	<b>420</b>	420	420	420	420	420	420	420	420
Liberty Center	Henry	531	531	583	670	756	843	929	<b>1,016</b>	1,102	1,189	1,275	1,362	1,448	1,535	1,621	1,708
Lithopolis	Fairfield	46	93	139	186	232	278	325	<b>371</b>	417	464	510	557	603	649	696	742
Little Hocking Water Association	Washington	350	350	350	350	407	463	520	<b>577</b>	633	690	747	803	860	917	973	1,030
Logan	Hocking	416	416	416	416	467	517	567	<b>618</b>	668	718	769	819	869	920	970	1,020
London	Madison	158	158	158	158	216	274	332	<b>390</b>	448	506	564	622	680	738	796	855
Louisville	Stark	197	197	197	236	275	314	353	<b>387</b>	416	445	474	503	532	561	589	609
Loveland	Clermont	170	170	170	170	181	203	225	<b>248</b>	272	295	318	342	365	388	412	435
Lowell	Washington	741	741	741	741	741	741	741	<b>741</b>	741	741	741	741	741	741	741	741
Lucas County Sanitary Engineers	Pickaway	391	391	391	391	391	391	391	<b>391</b>	391	391	391	391	391	391	391	391
Lynchburg	Highland	357	357	357	357	369	381	393	<b>405</b>	417	429	441	453	465	477	489	501
Madison County Water District	Richland	192	192	192	215	239	262	286	<b>310</b>	333	357	380	404	427	451	475	498
Manchester Farms	Geauga	1,271	1,271	1,271	1,271	1,271	1,271	1,271	<b>1,271</b>	1,271	1,271	1,271	1,271	1,271	1,271	1,271	1,271
Mansfield	Richland	184	193	211	229	248	266	302	<b>339</b>	376	412	449	485	522	558	595	632
Marietta	Washington	365	365	365	375	413	452	490	<b>529</b>	567	605	644	682	721	759	798	836
Marysville	Union	276	276	276	331	385	439	493	<b>547</b>	601	655	710	764	818	872	926	980
Maumee	Lucas	288	288	288	288	360	432	504	<b>576</b>	648	720	792	864	936	1,008	1,080	1,152
McConnelsville	Morgan	485	485	485	485	503	521	539	<b>557</b>	575	593	611	629	647	665	683	701
Medina Co. Northwest	Medina	258	258	314	370	426	482	539	<b>595</b>	651	707	763	819	875	931	987	1,043
Medina Co. Sharon-Wadsworth	Medina	258	258	314	370	426	482	539	<b>595</b>	651	707	763	819	875	931	987	1,043
Medina Co. Southern	Medina	258	258	314	370	426	482	539	<b>595</b>	651	707	763	819	875	931	987	1,043
Miami County - Camp Troy	Miami	143	143	143	143	175	208	272	<b>337</b>	401	465	530	594	658	723	787	851
Miamisburg	Montgomery	275	275	275	275	304	361	418	<b>476</b>	533	590	647	704	762	819	876	933
Middlefield	Geauga	253	253	253	253	294	334	375	<b>416</b>	457	498	538	579	620	661	702	742

## Appendix C – 2023 Residential Water Rates for Varying Demand (500-8,000 gal/mo)

Annual Drinking Water Rates (in 2023 \$)																	
System Name	County	Drinking Water Usage (gal/mo)															
		500	1,000	1,500	2,000	2,500	3,000	3,500	4,000	4,500	5,000	5,500	6,000	6,500	7,000	7,500	8,000
Minerva	Stark	243	243	243	243	243	243	243	243	243	243	243	243	243	243	243	243
Mingo Junction	Jefferson	429	498	567	636	705	774	843	912	981	1,050	1,119	1,188	1,257	1,326	1,395	1,464
Minster	Auglaize	76	88	101	113	126	139	151	164	176	189	202	214	227	239	252	265
Monroe	Butler	150	195	240	285	330	375	419	464	509	554	599	643	688	733	778	823
Montgomery County Water Service 1	Montgomery	135	135	135	135	135	171	207	243	279	315	351	387	423	459	495	531
Montpelier	Williams	336	364	391	418	446	473	500	528	555	582	610	637	665	692	719	747
Morgan-Meigsville Rural Water	Morgan	792	792	792	792	792	792	792	792	882	972	1,062	1,152	1,242	1,332	1,422	1,512
Morgan-Meigsville - SR 376	Morgan	792	792	792	792	792	792	792	792	882	972	1,062	1,152	1,242	1,332	1,422	1,512
Morgan-Meigsville - West Malta	Morgan	792	792	792	792	792	792	792	792	882	972	1,062	1,152	1,242	1,332	1,422	1,512
Mount Gilead	Morrow	288	288	288	288	309	349	390	430	471	511	552	592	633	673	714	754
Mount Orab	Brown	240	240	240	240	282	324	366	408	450	492	531	570	609	648	687	726
Mount Victory	Hardin	313	350	388	425	462	499	536	574	611	648	685	722	760	797	834	871
Munroe Falls	Summit	324	324	324	324	412	500	589	677	765	853	941	1,030	1,118	1,206	1,294	1,382
Muskingum County	Muskingum	360	360	360	360	360	360	360	360	360	402	445	487	529	572	614	657
Napoleon	Henry	163	199	272	344	417	489	562	634	707	779	852	924	997	1,069	1,142	1,214
New Bremen	Auglaize	156	156	156	181	207	232	257	283	308	333	358	384	409	434	459	485
New Lexington	Perry	256	256	305	353	402	451	500	548	597	646	694	743	792	841	889	938
New Philadelphia	Tuscarawas	212	212	212	212	212	212	230	261	290	319	348	376	405	434	463	492
New Richmond	Clermont	103	103	103	103	120	154	189	223	257	291	326	360	394	428	463	497
New Waterford	Columbiana	477	477	477	477	545	612	680	747	815	882	950	1,017	1,085	1,152	1,220	1,287
Newcomerstown	Tuscarawas	148	148	148	198	247	297	346	396	445	494	544	593	643	692	742	791
Niles	Trumbull	84	84	89	119	149	179	208	238	268	298	327	357	387	417	446	476
Noble County Water Auth.	Noble	660	660	660	660	660	660	696	732	768	804	840	876	912	948	984	1,020
Noble Water Company	Noble	423	423	423	423	483	542	602	662	722	781	841	901	960	1,020	1,080	1,139
North Hampton	Clark	396	396	396	396	396	396	396	396	396	396	396	396	396	396	396	396
North Lewisburg	Champaign	328	328	328	328	328	328	382	437	491	546	601	655	710	764	819	874
Northern Ohio Rural Water	Huron	336	336	336	336	336	336	378	456	534	612	690	768	846	924	1,002	1,080
Northern Ohio Rural Water - Camp Road	Huron	336	336	336	336	336	336	378	456	534	612	690	768	846	924	1,002	1,080

## Appendix C – 2023 Residential Water Rates for Varying Demand (500-8,000 gal/mo)

Annual Drinking Water Rates (in 2023 \$)																	
System Name	County	Drinking Water Usage (gal/mo)															
		500	1,000	1,500	2,000	2,500	3,000	3,500	4,000	4,500	5,000	5,500	6,000	6,500	7,000	7,500	8,000
Northern Ohio Rural Water - Northwest	Erie	336	336	336	336	336	336	378	456	534	612	690	768	846	924	1,002	1,080
Northern Ohio Rural Water - South	Huron	336	336	336	336	336	336	378	456	534	612	690	768	846	924	1,002	1,080
Northern Ohio Rural Water - Southeast	Huron	336	336	336	336	336	336	378	456	534	612	690	768	846	924	1,002	1,080
Northwestern W & S - Co Rd	Henry	334	398	527	655	784	912	1,041	1,169	1,298	1,427	1,555	1,684	1,812	1,941	2,069	2,198
Northwestern W & S - Fostoria North	Wood	232	248	265	281	297	313	330	346	362	378	394	411	427	443	459	476
Northwestern W & S - Middleton	Wood	232	248	265	281	297	313	329	346	362	378	394	410	427	443	459	475
Northwestern W & S - Oregon	Wood	255	294	333	372	411	450	489	528	567	605	644	683	722	761	800	839
Northwestern W & S - Portage	Wood	232	248	265	281	297	313	329	346	362	378	394	410	427	443	459	475
Northwestern W & S - SR 108	Henry	334	398	527	655	784	912	1,041	1,169	1,298	1,427	1,555	1,684	1,812	1,941	2,069	2,198
Northwestern W & S - Toledo SVC	Wood	323	323	323	323	323	323	323	323	323	323	327	330	333	336	340	343
Northwestern W & S - Weston	Wood	232	248	265	281	297	313	329	346	362	378	394	410	427	443	459	475
Northwestern W & S -McComb	Hancock	625	625	625	625	625	637	648	659	670	681	692	703	714	725	736	747
Oak Harbor	Ottawa	252	252	252	252	278	304	330	356	382	408	434	460	486	512	538	564
Oberlin	Lorain	333	333	333	333	371	445	519	593	667	741	815	889	963	1,038	1,112	1,186
Ontario	Richland	34	44	67	89	111	133	155	178	200	222	244	266	289	311	333	355
Orrville	Wayne	263	301	340	378	416	454	492	530	569	607	645	683	718	753	787	822
Ottawa	Putnam	112	182	253	323	393	463	533	603	674	744	814	884	954	1,024	1,095	1,165
Ottawa Co.	Ottawa	288	288	288	288	288	288	288	288	288	318	348	378	408	438	468	498
Oxford	Butler	131	151	172	192	213	233	254	274	294	315	335	356	376	397	417	438
Painesville	Lake	184	210	235	260	286	311	336	362	387	412	438	463	488	514	539	564
Pataskala	Licking	133	133	133	133	133	133	163	193	222	252	281	311	341	370	400	430
Paulding	Paulding	175	175	175	175	234	292	351	409	468	526	585	643	702	760	819	877
Pemberville	Wood	332	332	386	441	495	549	603	658	712	766	820	875	929	983	1,037	1,092
Pickerington	Fairfield	79	104	129	154	179	204	229	254	279	304	329	354	378	403	428	453
Pike Water Inc	Pike	352	352	353	419	486	553	603	653	704	754	805	855	903	951	999	1,047
Piqua	Miami	339	339	401	464	526	588	651	713	776	838	900	963	1,025	1,088	1,150	1,212
Plymouth	Richland	512	512	512	512	590	669	747	825	903	982	1,060	1,138	1,216	1,293	1,370	1,448
Port Clinton	Ottawa	449	449	449	449	449	449	449	475	525	575	625	675	725	775	824	874

## Appendix C – 2023 Residential Water Rates for Varying Demand (500-8,000 gal/mo)

Annual Drinking Water Rates (in 2023 \$)																	
System Name	County	Drinking Water Usage (gal/mo)															
		500	1,000	1,500	2,000	2,500	3,000	3,500	4,000	4,500	5,000	5,500	6,000	6,500	7,000	7,500	8,000
Portsmouth	Scioto	100	140	180	220	261	301	341	<b>381</b>	422	462	502	543	583	623	664	712
Powhatan Point	Belmont	384	384	402	420	438	456	474	<b>492</b>	510	528	546	564	582	600	618	636
Put-In-Bay	Ottawa	269	269	269	269	313	358	402	<b>447</b>	491	536	580	625	692	759	826	893
Ravenna	Portage	163	163	163	163	182	218	255	<b>291</b>	328	364	401	437	473	510	546	583
Republic	Seneca	332	332	378	424	471	517	564	<b>610</b>	657	703	750	796	842	889	935	982
Reynoldsburg	Franklin	60	120	180	240	301	361	421	<b>481</b>	541	601	661	721	782	842	902	962
Richwood	Union	193	193	193	193	213	232	252	<b>271</b>	291	310	330	349	369	388	408	427
Rock Creek	Ashtabula	494	494	525	555	586	616	647	<b>677</b>	708	738	768	799	829	860	890	921
Roseville	Muskingum	432	432	432	452	499	547	594	<b>642</b>	689	736	784	831	879	926	974	1,021
Rural Lorain Co. Water Authority	Lorain	343	343	343	343	398	453	507	<b>562</b>	617	672	716	759	803	846	890	934
Rushville	Fairfield	347	347	578	810	831	852	873	<b>894</b>	915	936	957	978	999	1,020	1,041	1,063
Sabina	Clinton	255	255	294	333	372	411	450	<b>489</b>	528	567	606	645	684	723	763	802
Salem	Columbiana	321	321	322	340	359	378	397	<b>415</b>	434	453	472	490	509	528	547	565
Sandelwood	Portage	405	405	405	405	405	405	405	<b>405</b>	405	405	405	405	405	405	405	405
Sandusky	Erie	93	107	136	165	193	222	251	<b>279</b>	308	337	366	394	423	452	480	509
Seaman	Adams	234	234	234	234	273	313	352	<b>391</b>	431	470	509	548	588	627	666	706
Sheffield	Lorain	72	84	107	131	154	177	200	<b>224</b>	247	270	293	317	340	363	386	410
Shelby Municipal Utilities	Richland	131	131	132	182	233	284	335	<b>385</b>	436	487	537	588	639	690	740	791
Shelly Acres	Richland	480	480	480	480	480	480	480	<b>480</b>	480	480	480	480	480	480	480	480
Sherwood	Defiance	432	476	519	562	605	648	692	<b>735</b>	778	821	864	908	951	994	1,037	1,080
Sidney	Shelby	93	143	193	243	293	343	393	<b>444</b>	494	544	594	644	694	744	795	845
Silver Lake	Summit	214	250	285	320	355	390	425	<b>460</b>	495	531	566	601	636	671	706	741
Somerset	Perry	297	297	363	429	495	561	627	<b>693</b>	759	824	890	956	1,022	1,088	1,154	1,220
South Lebanon	Warren	388	388	388	388	388	388	412	<b>436</b>	460	484	508	532	556	579	603	627
South Point	Lawrence	336	336	336	336	336	336	336	<b>336</b>	336	336	336	336	336	336	336	336
South Solon	Madison	408	408	408	408	408	408	408	<b>408</b>	408	408	408	408	408	408	408	408
Southwest Licking Water & Sewer	Licking	228	228	228	228	261	295	329	<b>362</b>	396	429	463	497	530	564	597	631
Spencer	Medina	403	403	403	403	461	518	576	<b>633</b>	691	748	806	863	921	978	1,036	1,093

## Appendix C – 2023 Residential Water Rates for Varying Demand (500-8,000 gal/mo)

Annual Drinking Water Rates (in 2023 \$)																	
System Name	County	Drinking Water Usage (gal/mo)															
		500	1,000	1,500	2,000	2,500	3,000	3,500	4,000	4,500	5,000	5,500	6,000	6,500	7,000	7,500	8,000
Spencerville	Allen	409	409	409	409	451	493	535	<b>577</b>	619	661	702	744	786	828	870	912
Springfield	Clark	103	103	103	124	144	165	185	<b>206</b>	226	247	267	287	308	328	349	369
St. Henry	Mercer	120	120	120	120	145	171	196	<b>221</b>	247	272	297	323	348	373	399	424
Stark County Water	Stark	99	99	99	132	165	198	231	<b>264</b>	297	330	363	396	429	462	495	528
Steubenville	Jefferson	224	316	408	500	592	684	776	<b>868</b>	960	1,052	1,144	1,236	1,329	1,421	1,513	1,605
Stratton	Jefferson	24	24	24	24	24	24	24	<b>24</b>	24	24	24	24	24	24	24	24
Swanton	Fulton	402	402	402	402	439	476	513	<b>551</b>	588	625	662	699	737	774	811	848
Switzer Water Association	Monroe	378	378	378	378	486	594	702	<b>810</b>	918	1,026	1,134	1,242	1,350	1,458	1,566	1,674
TCMSD - Wilkshire Hills	Tuscarawas	290	324	357	391	425	459	493	<b>527</b>	561	595	629	663	696	730	764	798
Thornville	Perry	162	180	198	216	234	252	270	<b>288</b>	306	324	342	360	378	396	414	432
Tiltonsville	Jefferson	201	201	239	276	314	351	389	<b>426</b>	464	501	539	576	614	651	689	726
Toledo	Lucas	104	136	169	201	233	265	297	<b>330</b>	362	394	426	458	491	523	555	587
Toronto	Jefferson	336	336	336	336	417	498	579	<b>660</b>	741	822	903	984	1,065	1,146	1,227	1,308
Trenton	Butler	261	261	261	261	291	321	351	<b>382</b>	412	442	472	503	533	563	593	624
Trotwood	Montgomery	295	338	382	425	469	512	555	<b>599</b>	642	686	729	772	816	859	903	946
Troy	Miami	96	96	96	140	183	227	271	<b>314</b>	358	402	445	489	533	576	620	663
Tuppers Plains Chester Water	Meigs	322	322	322	322	322	322	365	<b>408</b>	451	494	538	581	624	667	710	754
Twin City Water & Sewer District	Tuscarawas	420	420	420	420	441	462	483	<b>504</b>	504	504	504	504	504	504	504	504
Twin Rivers Water Corp.	Hamilton	384	384	384	384	384	384	384	<b>384</b>	384	384	422	461	499	538	576	614
Union City	Darke	285	285	285	285	285	313	341	<b>369</b>	396	424	452	480	508	536	564	592
Urbana	Champaign	257	257	257	257	257	257	301	<b>344</b>	387	430	473	517	560	603	646	689
Utica	Licking	220	220	221	304	387	470	553	<b>635</b>	718	801	884	967	1,050	1,133	1,216	1,299
Van Wert	Van Wert	139	139	139	164	205	247	288	<b>329</b>	370	412	453	494	535	576	618	659
Vanlue	Hancock	651	687	723	759	795	831	867	<b>903</b>	939	975	1,011	1,047	1,083	1,119	1,155	1,191
Versailles	Darke	309	350	392	433	474	515	557	<b>598</b>	639	681	722	763	805	846	887	928
Walnut Creek Water Company	Holmes	360	360	360	360	360	360	360	<b>399</b>	438	477	516	555	594	633	672	711
Wapakoneta	Auglaize	175	175	175	227	279	330	382	<b>434</b>	486	537	589	641	693	744	796	848
Warren Comm W&S Association, Inc.	Washington	300	300	300	300	333	366	399	<b>432</b>	465	498	531	564	598	631	664	697

## Appendix C – 2023 Residential Water Rates for Varying Demand (500-8,000 gal/mo)

Annual Drinking Water Rates (in 2023 \$)																	
System Name	County	Drinking Water Usage (gal/mo)															
		500	1,000	1,500	2,000	2,500	3,000	3,500	4,000	4,500	5,000	5,500	6,000	6,500	7,000	7,500	8,000
Warren County Water & Sewer	Warren	169	169	169	169	169	169	197	<b>226</b>	254	282	310	338	367	395	423	451
Wauseon	Fulton	158	215	273	331	389	447	505	<b>562</b>	620	678	726	764	802	841	879	918
Waverly	Pike	206	206	219	258	297	336	375	<b>414</b>	453	492	531	570	609	648	687	726
Wayne	Wood	497	553	609	665	721	777	833	<b>890</b>	946	1,002	1,058	1,114	1,170	1,226	1,283	1,339
Waynoka Regional WSD	Brown	318	318	318	318	318	318	367	<b>416</b>	466	515	564	613	663	712	761	810
West Manchester	Preble	732	732	732	732	732	732	762	<b>792</b>	822	852	882	912	942	972	1,002	1,032
West Milton	Miami	327	371	415	459	502	546	590	<b>633</b>	677	721	764	808	852	895	939	983
West Salem	Wayne	492	510	539	567	596	624	653	<b>681</b>	710	738	767	795	824	852	881	909
Westerville	Franklin	115	115	116	157	198	239	280	<b>321</b>	362	403	444	485	526	567	608	649
Willard	Huron	262	262	294	326	359	391	424	<b>456</b>	488	521	553	586	618	650	683	715
Willow Park	Richland	624	624	624	624	624	624	624	<b>624</b>	624	624	624	624	624	624	624	624
Woodsfield	Monroe	414	414	414	414	491	567	644	<b>720</b>	797	873	950	1,026	1,103	1,179	1,256	1,332
Woodville	Sandusky	319	319	319	319	423	527	631	<b>735</b>	839	943	1,046	1,150	1,254	1,358	1,462	1,566
Wooster	Wayne	243	243	243	243	285	327	369	<b>411</b>	453	495	537	579	621	663	706	748
Wyoming	Hamilton	608	608	608	608	608	608	608	<b>608</b>	608	608	639	697	755	813	871	929
Xenia	Greene	22	45	67	90	112	135	157	<b>180</b>	202	225	247	270	292	315	337	360
Youngstown	Mahoning	136	157	198	240	281	323	364	<b>406</b>	447	488	530	571	613	654	696	737
Zanesville	Muskingum	150	150	150	203	255	307	359	<b>411</b>	463	515	567	620	672	724	776	828

## Appendix D

# 2023 Reported Residential Sewer Usages and Rates

## Appendix D – 2023 Reported Residential Sewer Usages and Rates

<b>System Name</b>	<b>County</b>	<b>Average Sewer Usage per Month (CCF)</b>	<b>Average Sewer Usage per Month (gal)</b>	<b>Annual Sewer Bill (in Dollars \$)</b>
Ada	Hardin	5.000	3,741	613
Akron	Summit	6.000	4,489	812
Alliance	Stark	5.900	4,414	370
Amanda	Fairfield	3.743	2,800	326
Amherst	Lorain	5.347	4,000	300
Antwerp	Paulding	4.614	3,452	342
Archbold	Fulton	9.357	7,000	616
Ashley	Delaware	4.010	3,000	314
Ashtabula Co. DES - Ashcraft	Ashtabula	3.500	2,618	561
Ashtabula Co. DES - Coffee Creek	Ashtabula	3.500	2,618	561
Ashtabula Co. DES - Holiday Camplands	Ashtabula	3.500	2,618	561
Ashtabula Co. DES - Jefferson	Ashtabula	3.500	2,618	561
Ashtabula Co. DES - Meadowood	Ashtabula	3.500	2,618	561
Athens Co.	Athens	4.010	3,000	285
Avon	Lorain	4.278	3,200	327
Avon Lake Regional Water & Sewer	Lorain	6.955	5,203	489
Ayersville Water & Sewer District	Defiance	0.000	0	732
Bailey Lakes	Ashland	7.753	5,800	874
Barnesville	Belmont	5.347	4,000	604
Bellville	Richland	3.669	2,745	383
Bowerston	Harrison	2.673	2,000	601
Bradner	Wood	4.278	3,200	459
Bremen	Fairfield	4.456	3,333	384
Brewster	Stark	5.347	4,000	645
Bucyrus	Crawford	4.000	2,992	348
Butler	Richland	4.411	3,300	476
Butler County W&S - Lesourdsville	Butler	6.149	4,600	240
Butler County W&S - New Miami	Butler	6.149	4,600	240
Butler County W&S - Queen Acres	Butler	6.149	4,600	240
Butler County W&S - Upper Mill Creek	Butler	6.149	4,600	240
Butler County W&S - Wade Mill	Butler	6.149	4,600	240
Cadiz	Harrison	4.010	3,000	705
Cambridge	Guernsey	6.684	5,000	521
Canal Winchester	Franklin	5.108	3,821	282
Canton	Stark	5.135	3,841	238
Cardington	Morrow	5.080	3,800	819
Carey	Wyandot	5.129	3,837	561
Carrollton	Carroll	6.817	5,100	505
Celina	Mercer	8.956	6,700	611
Centerburg	Knox	4.308	3,223	879

## Appendix D – 2023 Reported Residential Sewer Usages and Rates

<b>System Name</b>	<b>County</b>	<b>Average Sewer Usage per Month (CCF)</b>	<b>Average Sewer Usage per Month (gal)</b>	<b>Annual Sewer Bill (in Dollars \$)</b>
Chillicothe	Ross	2.000	1,496	98
Coldwater	Mercer	4.456	3,333	280
Columbus - Jackson Pike	Franklin	5.667	4,239	374
Columbus - Southerly	Franklin	5.667	4,239	347
Coshocton	Coshocton	5.110	3,823	365
Covington	Miami	5.347	4,000	353
Danville	Knox	3.743	2,800	478
Dayton	Montgomery	10.000	7,481	405
Delaware County Regional Sewer District - Alum Creek	Delaware	0.000	0	462
Delaware County Regional Sewer District - Hoover Woods	Delaware	0.000	0	462
Delaware County Regional Sewer District - Lower Scioto	Delaware	0.000	0	462
Delaware County Regional Sewer District - OECC	Delaware	0.000	0	462
Delaware County Regional Sewer District - Scioto Hills	Delaware	0.000	0	462
Delphos	Allen	5.210	3,898	765
Dresden	Muskingum	4.010	3,000	255
Dunkirk	Hardin	4.442	3,323	645
Earnhart Hill Water Dist.	Pickaway	4.010	3,000	747
Edgerton	Williams	4.812	3,600	382
Elida	Allen	3.600	2,693	228
Elmore	Ottawa	2.500	1,870	252
Elyria	Lorain	5.000	3,741	822
Englewood	Montgomery	6.022	4,505	302
EORWA	Belmont	5.828	4,360	448
Erie County Water District "B"	Erie	5.000	3,741	447
Fairfield	Butler	6.684	5,000	374
Farmersville	Montgomery	4.010	3,000	459
Fayette	Fulton	2.005	1,500	251
Findlay	Hancock	6.120	4,578	341
Flushing	Belmont	3.223	2,411	420
Fostoria	Seneca	3.100	2,319	297
Frazeysburg	Muskingum	3.369	2,520	819
Fredericktown	Knox	6.684	5,000	1,151
Gambier	Knox	4.662	3,488	464
Garrettsville	Portage	5.419	4,054	632
Geneva	Ashtabula	7.000	5,237	661
Girard	Trumbull	3.455	2,585	233
Gnadenhutten	Tuscarawas	5.347	4,000	306
Greenfield	Highland	5.347	4,000	623
Greenville	Darke	4.000	2,992	268
Hamler	Henry	4.010	3,000	720

## Appendix D – 2023 Reported Residential Sewer Usages and Rates

<b>System Name</b>	<b>County</b>	<b>Average Sewer Usage per Month (CCF)</b>	<b>Average Sewer Usage per Month (gal)</b>	<b>Annual Sewer Bill (in Dollars \$)</b>
Hartford	Licking	0.000	0	921
Hayesville	Ashland	6.000	4,489	437
Hiram	Portage	2.673	2,000	378
Holmes County Sewer District - Berlin	Holmes	0.000	0	662
Holmes County Sewer District - Mt. Hope	Holmes	0.000	0	662
Holmes County Sewer District - October Hills	Holmes	0.000	0	662
Holmes County Sewer District - Training Center	Holmes	0.000	0	662
Holmes County Sewer District - Walnut Creek	Holmes	0.000	0	662
Holmes County Sewer District - Winesburg	Holmes	0.000	0	662
Hopedale	Harrison	4.679	3,500	120
Jackson	Jackson	3.940	2,948	628
Jackson Center	Shelby	4.594	3,437	743
Jeffersonville	Fayette	3.577	2,676	845
Johnstown	Licking	4.930	3,688	253
Kent	Portage	5.000	3,741	395
Kenton	Hardin	4.098	3,066	589
Knox Co. - Bladensburg	Knox	5.347	4,000	388
Knox Co. - Little Jelloway Creek	Knox	5.347	4,000	388
Knox Co. - Pleasant View Acres	Knox	5.347	4,000	388
Lakewood	Cuyahoga	5.135*	3,841	605
Lancaster	Fairfield	6.000	4,489	763
Lebanon	Warren	4.278	3,200	295
Leetonia	Columbiana	3.818	2,856	478
Lewisburg	Preble	6.684	5,000	486
Lexington	Richland	6.684	5,000	548
Liberty Center	Henry	3.649	2,730	514
Logan	Hocking	5.347	4,000	540
Louisville	Stark	5.000	3,741	385
Lowell	Washington	3.342	2,500	576
Lucas County Sanitary Engineers	Pickaway	0.000	0	318
Franklin	Warren	4.090	3,060	309
Silver Lake	Summit	5.000	3,741	828
Maumee	Lucas	3.565	2,667	403
Wooster	Wayne	5.347	4,000	276
South Lebanon	Warren	6.684	5,000	517
Trotwood	Montgomery	5.333	3,990	393
Tuppers Plains Regional Sewer District	Meigs	5.347	4,000	636
Rushville	Fairfield	0.000	0	703
Germantown	Montgomery	4.355	3,258	434
Warren County Water & Sewer	Warren	8.488	6,350	356

## Appendix D – 2023 Reported Residential Sewer Usages and Rates

<b>System Name</b>	<b>County</b>	<b>Average Sewer Usage per Month (CCF)</b>	<b>Average Sewer Usage per Month (gal)</b>	<b>Annual Sewer Bill (in Dollars \$)</b>
North Hampton	Clark	12.684	9,489	1,020
Sheffield	Lorain	7.000	5,237	420
Mansfield	Richland	2.000	1,496	215
Marietta	Washington	6.000	4,489	828
Marysville	Union	5.000	3,741	512
McConnelsville	Morgan	5.397	4,038	670
Medina Co. Northwest	Medina	0.000	0	423
Medina Co. Sharon-Wadsworth	Medina	0.000	0	423
Medina Co. Southern	Medina	0.000	0	423
Middlefield	Geauga	4.828	3,611	428
Minerva	Stark	4.010	3,000	210
Minster	Auglaize	8.689	6,500	369
Montpelier	Williams	5.000	3,741	258
Mount Gilead	Morrow	10.370	7,758	842
Mount Orab	Brown	4.411	3,300	456
Mount Victory	Hardin	3.542	2,650	408
Napoleon	Henry	6.000	4,489	832
New Bremen	Auglaize	6.000	4,489	353
New Holland	Pickaway	2.907	2,175	590
New Lexington	Perry	4.010	3,000	620
New Richmond	Clermont	7.580	5,671	507
New Waterford	Columbiana	4.010	3,000	615
Newcomerstown	Tuscarawas	3.475	2,600	251
Niles	Trumbull	8.190	6,127	811
North Lewisburg	Champaign	6.102	4,565	688
Northeast Ohio Regional Sewer District	Cuyahoga	5.000	3,741	820
Northeast Ohio Regional Sewer District - Easterly	Cuyahoga	5.000	3,741	820
Northeast Ohio Regional Sewer District - Southerly	Cuyahoga	5.000	3,741	820
Northeast Ohio Regional Sewer District - Westerly	Cuyahoga	5.000	3,741	820
Northwestern W & S - Co Rd	Henry	5.300	3,965	422
Oberlin	Lorain	5.000	3,741	418
Ontario	Richland	6.015	4,500	854
Orrville	Wayne	5.730	4,287	426
Ottawa Co.	Ottawa	0.000	0	456
Oxford	Butler	5.000	3,741	292
Painesville	Lake	8.000	5,985	551
Pemberville	Wood	4.010	3,000	392
Plymouth	Richland	3.609	2,700	699
Port Clinton	Ottawa	3.000	2,244	553
Powhatan Point	Belmont	0.000	0	540

## Appendix D – 2023 Reported Residential Sewer Usages and Rates

<b>System Name</b>	<b>County</b>	<b>Average Sewer Usage per Month (CCF)</b>	<b>Average Sewer Usage per Month (gal)</b>	<b>Annual Sewer Bill (in Dollars \$)</b>
Put-In-Bay	Ottawa	2.673	2,000	269
Ravenna	Portage	4.000	2,992	540
Republic	Seneca	5.347	4,000	548
Reynoldsburg	Franklin	5.570	4,167	531
Rock Creek	Ashtabula	5.135*	3,841	877
Roseville	Muskingum	2.750	2,057	347
Sabina	Clinton	5.135*	3,841	519
Scioto Co. Sanitary - Lucasville	Scioto	5.347	4,000	605
Scioto Co. Sanitary - Minford	Scioto	5.347	4,000	605
Scioto Co. Sanitary - Scaff-Starrett	Scioto	5.347	4,000	605
Scioto Co. Sanitary - South Webster	Scioto	5.347	4,000	605
Scioto Co. Sanitary - Tanglewood	Scioto	5.347	4,000	605
Scioto Co. Sanitary - West Portsmouth	Scioto	5.347	4,000	605
Scioto Co. Sanitary - Wheelersburg	Scioto	5.347	4,000	605
Seaman	Adams	4.679	3,500	327
Shelby Municipal Utilities	Richland	4.000	2,992	259
Sherwood	Defiance	3.901	2,919	371
Sidney	Shelby	8.000	5,985	589
Somerset	Perry	0.000	0	504
South Solon	Madison	0.000	0	972
Southwest Licking Water & Sewer	Licking	5.549	4,151	743
Spencer	Medina	2.673	2,000	508
Spencerville	Allen	3.867	2,893	487
Springfield	Clark	5.840	4,369	567
St. Clairsville	Belmont	2.673	2,000	322
St. Henry	Mercer	6.042	4,520	244
Steubenville	Jefferson	5.347	4,000	717
Stratton	Jefferson	0.000	0	24
Swanton	Fulton	5.347	4,000	630
Thornville	Perry	4.679	3,500	570
Tiltonsville	Jefferson	4.010	3,000	416
Tipp City	Miami	5.347	4,000	111
Toledo	Lucas	5.090	3,808	434
Toronto	Jefferson	4.010	3,000	498
Trenton	Butler	9.357	7,000	522
Troy	Miami	9.000	6,733	480
Twin City Water & Sewer District	Tuscarawas	2.673	2,000	360
Twinsburg	Summit	0.000	0	240
Union City	Darke	3.340	2,499	229
Upper Hocking	Fairfield	6.000	4,489	763

## Appendix D – 2023 Reported Residential Sewer Usages and Rates

<b>System Name</b>	<b>County</b>	<b>Average Sewer Usage per Month (CCF)</b>	<b>Average Sewer Usage per Month (gal)</b>	<b>Annual Sewer Bill (in Dollars \$)</b>
Urbana	Champaign	5.100	3,815	407
Utica	Licking	5.000	3,741	584
Van Wert	Van Wert	9.200	6,883	739
Versailles	Darke	3.860	2,887	342
Waverly	Pike	3.565	2,667	198
Wayne	Wood	4.000	2,992	524
Waynoka Regional WSD	Brown	4.010	3,000	309
West Manchester	Preble	5.347	4,000	582
West Milton	Miami	5.347	4,000	470
West Salem	Wayne	4.679	3,500	453
Willard	Huron	4.010	3,000	493
Woodsfield	Monroe	4.144	3,100	583
Woodville	Sandusky	5.347	4,000	735
Youngstown	Mahoning	5.430	4,062	517
Zanesville	Muskingum	3.840	2,873	409

# Appendix E

## 2023 Reported Residential Water Usages and Rates

## Appendix E – 2023 Reported Residential Water Usages and Rates

<b>System Name</b>	<b>County</b>	<b>Average Water Usage per Month (CCF)</b>	<b>Average Water Usage per Month (gal)</b>	<b>Annual Water Bill (in Dollars \$)</b>
Ada	Hardin	5.000	3,741	364
Akron	Summit	7.000	5,237	305
Alliance	Stark	5.900	4,414	410
Amanda	Fairfield	3.743	2,800	850
Amherst	Lorain	5.347	4,000	115
Antwerp	Paulding	4.614	3,452	420
Apple Creek	Wayne	5.190*	3,883	165
Archbold	Fulton	9.357	7,000	624
Ashley	Delaware	4.010	3,000	442
Ashtabula County DES	Ashtabula	3.000	2,244	510
Ashville	Pickaway	5.190*	3,883	221
Athens Co.	Athens	3.271	2,447	423
Avon	Lorain	5.800	4,339	335
Avon Lake Regional Water & Sewer	Lorain	8.332	6,233	164
Ayersville Water & Sewer District	Defiance	3.489	2,610	805
Bailey Lakes	Ashland	7.623	5,703	867
Bainbridge	Ross	4.010	3,000	305
Barnesville	Belmont	5.347	4,000	376
Bellbrook	Greene	4.184	3,130	206
Bellevue	Huron	5.190*	3,883	391
Bellville	Richland	3.354	2,510	287
Belmont County W&S	Belmont	2.673	2,000	356
Berea	Cuyahoga	5.190*	3,883	243
Bowerston	Harrison	2.673	2,000	427
Bradner	Wood	4.144	3,100	581
Bremen	Fairfield	4.456	3,333	257
Buckeye Lake	Licking	6.015	4,500	789
Buckeye Water & Sewer District	Columbiana	5.347	4,000	615
Bucyrus	Crawford	4.000	2,992	505
Butler	Richland	4.411	3,300	476
Cadiz	Harrison	4.010	3,000	630
Cambridge	Guernsey	6.684	5,000	482
Canal Winchester	Franklin	5.347	4,000	310
Canton	Stark	5.190*	3,883	184
Cardington	Morrow	5.080	3,800	763
Carey	Wyandot	5.129	3,837	310
Carrollton	Carroll	6.817	5,100	366
Celina	Mercer	8.956	6,700	708
Chillicothe	Ross	5.190*	3,883	280
Cincinnati	Hamilton	5.190*	3,883	316

## Appendix E – 2023 Reported Residential Water Usages and Rates

<b>System Name</b>	<b>County</b>	<b>Average Water Usage per Month (CCF)</b>	<b>Average Water Usage per Month (gal)</b>	<b>Annual Water Bill (in Dollars \$)</b>
Circleville	Pickaway	4.000	2,992	303
Clermont	Clermont	5.190*	3,883	170
Cleveland	Cuyahoga	5.000	3,741	297
Coldwater	Mercer	4.456	3,333	320
Columbus	Franklin	5.667	4,239	805
Coshocton	Coshocton	4.500	3,366	315
Covington	Miami	6.684	5,000	589
Danville	Knox	3.743	2,800	673
Dayton	Montgomery	10.000	7,481	212
Deersville	Harrison	2.673	2,000	516
Del-Co Water	Delaware	7.218	5,400	502
Delphos	Allen	5.190*	3,883	740
Dover	Tuscarawas	4.910	3,673	169
Dresden	Muskingum	4.010	3,000	309
Dunkirk	Hardin	4.442	3,323	440
Earnhart Hill Water Dist.	Pickaway	5.882	4,400	623
East Canton	Stark	4.411	3,300	639
Eaton	Preble	5.190*	3,883	350
Edgerton	Williams	4.812	3,600	342
Elida	Allen	4.479	3,351	662
Elmore	Ottawa	2.500	1,870	227
Elyria	Lorain	5.000	3,741	491
Englewood	Montgomery	6.836	5,114	348
Enon	Clark	9.357	7,000	312
Erie County - Vermillion	Erie	5.190*	3,883	490
Erie County Water District "B"	Erie	5.000	3,741	405
Fairfield	Butler	6.684	5,000	315
Fairport Harbor	Lake	9.333	6,982	760
Farmersville	Montgomery	4.010	3,000	364
Fayette	Fulton	4.010	3,000	356
Findlay	Hancock	6.120	4,578	234
Flushing	Belmont	3.223	2,411	468
Fostoria	Seneca	3.100	2,319	237
Franklin	Warren	4.090	3,060	227
Frazeysburg	Muskingum	3.369	2,520	483
Fredericktown	Knox	6.684	5,000	262
Galion	Crawford	5.190*	3,883	560
Gallia Co. Rural Water	Gallia	5.748	4,300	536
Gambier	Knox	4.662	3,488	518
Garrettsville	Portage	4.703	3,518	440

## Appendix E – 2023 Reported Residential Water Usages and Rates

<b>System Name</b>	<b>County</b>	<b>Average Water Usage per Month (CCF)</b>	<b>Average Water Usage per Month (gal)</b>	<b>Annual Water Bill (in Dollars \$)</b>
Geneva	Ashtabula	7.000	5,237	653
Germantown	Montgomery	4.423	3,309	307
Girard	Trumbull	3.455	2,585	368
Gnadenhutten	Tuscarawas	5.347	4,000	216
Granville	Licking	5.190*	3,883	273
Greenfield	Highland	5.347	4,000	471
Greenville	Darke	4.000	2,992	300
Greenwich	Huron	5.190*	3,883	324
Hamler	Henry	4.010	3,000	684
Hanley	Richland	0.000	0	400
Hayesville	Ashland	6.000	4,489	648
Hebron	Licking	4.010	3,000	186
Hiram	Portage	5.190*	3,883	714
Hopedale	Harrison	4.679	3,500	157
Hubbard	Trumbull	5.190*	3,883	424
Huber Heights	Montgomery	5.190*	3,883	399
Hudson	Summit	5.190*	3,883	366
Huron	Erie	3.933	2,943	348
Jackson	Jackson	4.000	2,992	297
Jackson Center	Shelby	4.621	3,457	617
Jacksonville	Athens	3.576	2,675	645
Jefferson County W and S	Franklin	5.190*	3,883	631
Jeffersonville	Fayette	3.577	2,676	437
Johnstown	Licking	8.423	6,301	437
Kent	Portage	5.000	3,741	281
Kenton	Hardin	4.154	3,108	474
Knox County	Knox	5.347	4,000	242
Lakeview	Logan	3.342	2,500	488
Lakewood	Cuyahoga	5.190*	3,883	535
Lancaster	Fairfield	7.000	5,237	632
Leading Creek Conservancy District	Meigs	5.190*	3,883	722
Le-Ax Water Dist.	Athens	4.216	3,154	541
Lebanon	Warren	4.278	3,200	298
Leetonia	Columbiana	3.822	2,859	630
Lewisburg	Preble	6.684	5,000	462
Lexington	Richland	6.684	5,000	548
Lexview Water and Park Board	Richland	0.000	0	420
Liberty Center	Henry	4.638	3,470	924
Lithopolis	Fairfield	5.190*	3,883	360
Little Hocking Water Association	Washington	6.316	4,725	659

## Appendix E – 2023 Reported Residential Water Usages and Rates

<b>System Name</b>	<b>County</b>	<b>Average Water Usage per Month (CCF)</b>	<b>Average Water Usage per Month (gal)</b>	<b>Annual Water Bill (in Dollars \$)</b>
Logan	Hocking	5.347	4,000	618
London	Madison	5.190*	3,883	377
Louisville	Stark	7.000	5,237	459
Loveland	Clermont	8.254	6,175	350
Lowell	Washington	3.342	2,500	741
Lucas County Sanitary Engineers	Pickaway	2.883	2,157	391
Lynchburg	Highland	5.190*	3,883	402
Madison County Water District	Richland	4.000	2,992	262
Manchester Farms	Geauga	0.000	0	1,271
Mansfield	Richland	2.673	2,000	229
Marietta	Washington	6.000	4,489	566
Marysville	Union	5.000	3,741	519
Maumee	Lucas	3.565	2,667	384
McConnelsville	Morgan	5.396	4,037	559
Medina Co. Northwest	Medina	6.015	4,500	651
Medina Co. Sharon-Wadsworth	Medina	6.015	4,500	651
Medina Co. Southern	Medina	6.015	4,500	651
Miami County - Camp Troy	Miami	5.190*	3,883	322
Miamisburg	Montgomery	5.190*	3,883	462
Middlefield	Geauga	4.827	3,611	384
Minerva	Stark	4.010	3,000	243
Mingo Junction	Jefferson	5.190*	3,883	896
Minster	Auglaize	8.689	6,500	227
Monroe	Butler	5.534	4,140	477
Montgomery County Water Service 1	Montgomery	2.595	1,941	135
Montpelier	Williams	5.000	3,741	514
Morgan-Meigsville Rural Water	Morgan	6.684	5,000	972
Morgan-Meigsville - SR 376	Morgan	6.684	5,000	972
Morgan-Meigsville - West Malta	Morgan	6.684	5,000	972
Mount Gilead	Morrow	10.370	7,758	735
Mount Orab	Brown	4.411	3,300	349
Mount Victory	Hardin	3.538	2,647	473
Munroe Falls	Summit	4.545	3,400	571
Muskingum County	Muskingum	6.015	4,500	360
Napoleon	Henry	6.000	4,489	705
New Bremen	Auglaize	6.000	4,489	307
New Lexington	Perry	4.010	3,000	451
New Philadelphia	Tuscarawas	5.000	3,741	246
New Richmond	Clermont	7.580	5,671	337
New Waterford	Columbiana	4.010	3,000	612

## Appendix E – 2023 Reported Residential Water Usages and Rates

<b>System Name</b>	<b>County</b>	<b>Average Water Usage per Month (CCF)</b>	<b>Average Water Usage per Month (gal)</b>	<b>Annual Water Bill (in Dollars \$)</b>
Newcomerstown	Tuscarawas	3.475	2,600	257
Niles	Trumbull	6.530	4,885	291
Noble County Water Auth.	Noble	5.347	4,000	732
Noble Water Company	Noble	9.223	6,900	1,008
North Hampton	Clark	0.000	17,100	396
North Lewisburg	Champaign	6.102	4,565	498
Northern Ohio Rural Water	Huron	5.815	4,350	511
Northern Ohio Rural Water - Camp Road	Huron	5.815	4,350	511
Northern Ohio Rural Water - Northwest	Erie	5.815	4,350	511
Northern Ohio Rural Water - South	Huron	5.815	4,350	511
Northern Ohio Rural Water - Southeast	Huron	5.815	4,350	511
Northwestern W & S - Co Rd	Henry	5.000	3,741	1,103
Northwestern W & S - Fostoria North	Wood	5.000	3,741	337
Northwestern W & S - Middleton	Wood	5.000	3,741	337
Northwestern W & S - Oregon	Wood	5.000	3,741	507
Northwestern W & S - Portage	Wood	5.000	3,741	337
Northwestern W & S - SR 108	Henry	5.000	3,741	1,103
Northwestern W & S - Toledo SVC	Wood	5.000	3,741	323
Northwestern W & S - Weston	Wood	5.000	3,741	337
Northwestern W & S -McComb	Hancock	5.000	3,741	653
Oak Harbor	Ottawa	5.190*	3,883	350
Oberlin	Lorain	5.000	3,741	554
Ontario	Richland	6.015	4,500	200
Orrville	Wayne	5.730	4,287	552
Ottawa	Putnam	5.500	4,115	620
Ottawa Co.	Ottawa	7.024	5,255	333
Oxford	Butler	5.000	3,741	263
Painesville	Lake	2.900	2,169	269
Pataskala	Licking	5.190*	3,883	186
Paulding	Paulding	5.190*	3,883	395
Pemberville	Wood	5.347	4,000	658
Pickerington	Fairfield	5.190*	3,883	248
Pike Water Inc	Pike	5.190*	3,883	642
Piqua	Miami	5.190*	3,883	699
Plymouth	Richland	4.010	3,000	669
Port Clinton	Ottawa	4.000	2,992	449
Portsmouth	Scioto	5.190*	3,883	372
Powhatan Point	Belmont	4.010	3,000	456
Put-In-Bay	Ottawa	2.673	2,000	269
Ravenna	Portage	4.000	2,992	218

## Appendix E – 2023 Reported Residential Water Usages and Rates

<b>System Name</b>	<b>County</b>	<b>Average Water Usage per Month (CCF)</b>	<b>Average Water Usage per Month (gal)</b>	<b>Annual Water Bill (in Dollars \$)</b>
Republic	Seneca	5.347	4,000	610
Reynoldsburg	Franklin	5.570	4,167	501
Richwood	Union	5.190*	3,883	267
Rock Creek	Ashtabula	5.190*	3,883	670
Roseville	Muskingum	2.750	2,057	457
Rural Lorain Co. Water Authority	Lorain	5.080	3,800	540
Rushville	Fairfield	5.190*	3,883	889
Sabina	Clinton	5.190*	3,883	480
Salem	Columbiana	5.190*	3,883	411
Sandelwood	Portage	0.000	0	405
Sandusky	Erie	5.190*	3,883	273
Seaman	Adams	4.679	3,500	352
Sheffield	Lorain	7.000	5,237	281
Shelby Municipal Utilities	Richland	4.000	2,992	283
Shelly Acres	Richland	0.000	0	480
Sherwood	Defiance	3.901	2,919	641
Sidney	Shelby	8.000	5,985	643
Silver Lake	Summit	5.000	3,741	442
Somerset	Perry	7.352	5,500	890
South Lebanon	Warren	6.684	5,000	484
South Point	Lawrence	5.190*	3,883	336
South Solon	Madison	0.000	0	408
Southwest Licking Water & Sewer	Licking	5.549	4,151	372
Spencer	Medina	2.673	2,000	403
Spencerville	Allen	3.866	2,892	484
Springfield	Clark	5.840	4,369	221
St. Henry	Mercer	6.042	4,520	248
Stark County Water	Stark	6.684	5,000	330
Steubenville	Jefferson	5.347	4,000	868
Stratton	Jefferson	0.000	0	24
Swanton	Fulton	5.347	4,000	551
Switzer Water Association	Monroe	4.010	3,000	594
TCMSD - Wilkshire Hills	Tuscarawas	5.190*	3,883	519
Thornville	Perry	4.679	3,500	270
Tiltonsville	Jefferson	4.010	3,000	351
Toledo	Lucas	6.650	4,975	392
Toronto	Jefferson	4.010	3,000	498
Trenton	Butler	9.357	7,000	563
Trotwood	Montgomery	5.667	4,239	620
Troy	Miami	9.000	6,733	553

## Appendix E – 2023 Reported Residential Water Usages and Rates

<b>System Name</b>	<b>County</b>	<b>Average Water Usage per Month (CCF)</b>	<b>Average Water Usage per Month (gal)</b>	<b>Annual Water Bill (in Dollars \$)</b>
Tuppers Plains Chester Water	Meigs	5.347	4,000	408
Twin City Water & Sewer District	Tuscarawas	2.673	2,000	420
Twin Rivers Water Corp.	Hamilton	6.951	5,200	399
Union City	Darke	3.500	2,618	291
Urbana	Champaign	5.991	4,482	385
Utica	Licking	4.000	2,992	468
Van Wert	Van Wert	9.300	6,957	573
Vanlue	Hancock	3.943	2,950	827
Versailles	Darke	3.869	2,894	507
Walnut Creek Water Company	Holmes	5.614	4,200	415
Wapakoneta	Auglaize	5.190*	3,883	422
Warren Comm W&S Association, Inc.	Washington	5.025	3,759	416
Warren County Water & Sewer	Warren	8.020	6,000	338
Wauseon	Fulton	5.190*	3,883	549
Waverly	Pike	3.565	2,667	310
Wayne	Wood	4.000	2,992	776
Waynoka Regional WSD	Brown	4.010	3,000	318
West Manchester	Preble	5.347	4,000	792
West Milton	Miami	5.347	4,000	633
West Salem	Wayne	4.679	3,500	653
Westerville	Franklin	5.330	3,987	320
Willard	Huron	4.010	3,000	391
Willow Park	Richland	0.000	0	624
Woodsfield	Monroe	4.010	3,000	567
Woodville	Sandusky	4.010	3,000	527
Wooster	Wayne	5.347	4,000	411
Wyoming	Hamilton	5.190*	3,883	608
Xenia	Greene	5.190*	3,883	174
Youngstown	Mahoning	5.430	4,062	411
Zanesville	Muskingum	3.690	2,760	282

# Appendix F

## 2023 Residential Stormwater Rates

## Appendix F – 2023 Residential Stormwater Rates

System Name	County	Stormwater Rates (in Dollars \$)
Ada	Hardin	160
Antwerp	Paulding	60
Avon	Lorain	30
Bellville	Richland	18
Buckeye Lake	Licking	64
Bucyrus	Crawford	48
Butler	Richland	24
Cambridge	Guernsey	4
Canal Winchester	Franklin	42
Carey	Wyandot	108
Carrollton	Carroll	36
Celina	Mercer	39
Coldwater	Mercer	24
Columbus	Franklin	62
Coshocton	Coshocton	120
Dayton	Montgomery	413
Deerfield	Warren	23
Dresden	Muskingum	24
Edgerton	Williams	60
Elida	Allen	36
Elmore	Ottawa	48
Elyria	Lorain	32
Findlay	Hancock	36
Fostoria	Seneca	82
Franklin	Warren	69
Frazeysburg	Muskingum	30
Gambier	Knox	24
Germantown	Montgomery	54
Greenville	Darke	35
Huron	Erie	20
Jacksonville	Athens	60
Kenton	Hardin	12
Lakewood	Cuyahoga	24
Lancaster	Fairfield	92
Lebanon	Warren	47
Lexington	Richland	36
Liberty Center	Henry	120
Logan	Hocking	36
Louisville	Stark	42
Loveland	Clermont	51

## Appendix F – 2023 Residential Stormwater Rates

System Name	County	Stormwater Rates (in Dollars \$)
Marysville	Union	93
Monroe	Butler	36
Montpelier	Williams	36
Mount Gilead	Morrow	30
Mount Victory	Hardin	9
Munroe Falls	Summit	36
Napoleon	Henry	114
New Lexington	Perry	27
Northeast Ohio Regional Sewer District	Cuyahoga	67
Northeast Ohio Regional Sewer District - Easterly	Cuyahoga	67
Northeast Ohio Regional Sewer District - Southerly	Cuyahoga	67
Northeast Ohio Regional Sewer District - Westerly	Cuyahoga	67
Oberlin	Lorain	79
Pemberville	Wood	36
Ravenna	Portage	36
Republic	Seneca	84
Reynoldsburg	Franklin	76
Roseville	Muskingum	30
Sabina	Clinton	24
Sheffield	Lorain	58
Shelby Municipal Utilities	Richland	21
Sidney	Shelby	32
Silver Lake	Summit	135
Springfield	Clark	33
Swanton	Fulton	36
Thornville	Perry	36
Toledo	Lucas	46
Trenton	Butler	42
Trotwood	Montgomery	48
Troy	Miami	68
Urbana	Champaign	66
West Salem	Wayne	60
Wooster	Wayne	41
Zanesville	Muskingum	60

## Appendix G

# 2023 Residential Tap-In Fee Responses

## Appendix G – 2023 Residential Tap-In Fee Responses

<u>Tap-In Fees (in Dollars \$)</u>					
<u>System Name</u>	<u>County</u>	<u>Sewer Tap Inside</u>	<u>Sewer Tap Outside</u>	<u>Water Tap Inside</u>	<u>Water Tap Outside</u>
Ada	Hardin	500	1,000	800	1,600
Akron	Summit	0	0	3,300	3,300
Alliance	Stark	0	0	760	1,330
Amanda	Fairfield	-	-	3,750	3,750
Amherst	Lorain	1,200	1,800	1,050	1,575
Antwerp	Paulding	150	150	750	750
Archbold	Fulton	0	0	2,330	2,680
Ashley	Delaware	4,500	4,500	3,500	3,500
Ashtabula County DES	Ashtabula	2,500	0	3,000	0
Athens Co.	Athens	2,500	0	2,000	0
Avon	Lorain	2,718	0	3,882	3,882
Avon Lake Regional Water & Sewer	Lorain	2,266	0	3,735	0
Ayersville Water & Sewer District	Defiance	5,700	5,700	1,500	1,500
Bailey Lakes	Ashland	3,000	0	1,500	1,500
Bainbridge	Ross	0	0	500	550
Barnesville	Belmont	500	0	3,000	2,300
Bellbrook	Greene	-	-	3,000	3,000
Bellville	Richland	1,000	1,000	1,000	1,000
Bowerston	Harrison	1,900	1,900	1,600	1,600
Bradner	Wood	1,000	1,500	1,000	1,200
Bremen	Fairfield	6,505	8,131	5,475	6,843
Brewster	Stark	750	750	-	-
Buckeye Lake	Licking	-	-	2,500	0
Buckeye Water & Sewer District	Columbiana	-	-	3,250	3,250
Bucyrus	Crawford	285	535	1,500	2,500
Butler	Richland	400	0	400	0
Butler County W&S - Lesourdsville	Butler	4,595	8,118	4,465	4,465
Cadiz	Harrison	800	0	1,200	0
Cambridge	Guernsey	1,500	2,250	600	900
Canal Winchester	Franklin	6,747	0	5,067	0
Canton	Stark	500	0	-	-
Cardington	Morrow	2,851	2,851	2,452	2,452
Carey	Wyandot	150	150	150	150
Carrollton	Carroll	375	375	1,692	1,692
Celina	Mercer	800	800	700	700
Centerburg	Knox	3,586	3,586	-	-
Circleville	Pickaway	1,762	1,762	3,627	3,627
Cleveland	Cuyahoga	-	-	182	182
Coldwater	Mercer	400	600	600	900
Coolville	Athens	-	-	2,500	0

## Appendix G – 2023 Residential Tap-In Fee Responses

<u>Tap-In Fees (in Dollars \$)</u>					
<u>System Name</u>	<u>County</u>	<u>Sewer Tap Inside</u>	<u>Sewer Tap Outside</u>	<u>Water Tap Inside</u>	<u>Water Tap Outside</u>
Coshocton	Coshocton	2,000	3,000	2,000	3,000
Covington	Miami	3,000	3,000	1,000	1,000
Del-Co Water	Delaware	-	-	0	5,410
Delphos	Allen	50	50	900	900
Dover	Tuscarawas	750	750	750	750
Dresden	Muskingum	2,067	2,273	2,067	2,273
Dunkirk	Hardin	2,000	0	2,000	0
Earnhart Hill Water Dist.	Pickaway	0	5,040	3,790	0
East Canton	Stark	-	-	1,000	1,000
Edgerton	Williams	0	0	1,250	1,875
Edison	Morrow	2,500	3,000	-	-
Elida	Allen	350	500	1,600	2,440
Elmore	Ottawa	325	325	325	325
Elyria	Lorain	3,000	3,000	2,371	2,964
Englewood	Montgomery	500	0	450	0
Enon	Clark	-	-	1,000	1,000
EORWA	Belmont	1,000	0	-	-
Fairfield	Butler	1,100	0	430	0
Fairport Harbor	Lake	-	-	500	0
Farmersville	Montgomery	8,000	0	16,000	0
Fayette	Fulton	-	-	1,000	-
Findlay	Hancock	900	1,225	900	1,225
Flushing	Belmont	300	300	450	450
Fostoria	Seneca	395	395	1,200	1,500
Franklin	Warren	3,239	0	8,018	0
Frazeysburg	Muskingum	2,500	2,500	2,500	2,500
Fredericktown	Knox	0	0	1,100	1,100
Gallia Co. Rural Water	Gallia	-	-	1,750	1,750
Gambier	Knox	6,139	0	2,422	0
Garrettsville	Portage	7,658	0	2,350	2,350
Geneva	Ashtabula	3,000	4,500	2,170	0
Germantown	Montgomery	1,500	1,500	1,500	1,500
Girard	Trumbull	0	0	400	400
Gnadenhutten	Tuscarawas	1,800	1,800	1,800	1,800
Greenfield	Highland	500	500	500	500
Greenville	Darke	1,350	1,350	900	900
Hamler	Henry	2,000	2,000	900	900
Hartford	Licking	2,500	0	-	-
Hayesville	Ashland	2,500	2,500	2,500	2,500
Hebron	Licking	-	-	1,471	2,207

## Appendix G – 2023 Residential Tap-In Fee Responses

<u>Tap-In Fees (in Dollars \$)</u>					
<u>System Name</u>	<u>County</u>	<u>Sewer Tap Inside</u>	<u>Sewer Tap Outside</u>	<u>Water Tap Inside</u>	<u>Water Tap Outside</u>
Hiram	Portage	4,000	4,000	2,000	2,000
Holmes County Sewer District - Berlin	Holmes	4,500	4,500	-	-
Hopedale	Harrison	2,000	2,000	1,500	1,500
Huron	Erie	-	-	2,273	2,273
Jackson	Jackson	1,000	1,000	1,500	1,500
Jackson Center	Shelby	300	450	500	750
Jacksonville	Athens	-	-	2,500	2,500
Jeffersonville	Fayette	2,500	-	2,500	-
Johnstown	Licking	375	375	375	375
Kent	Portage	-	-	50	50
Kenton	Hardin	650	650	475	475
Knox County	Knox	1,250	0	3,305	0
Lakeview	Logan	-	-	1,000	1,000
Lancaster	Fairfield	-	-	3,690	5,535
Le-Ax Water Dist.	Athens	-	-	2,760	0
Lebanon	Warren	2,640	3,960	3,300	4,950
Leetonia	Columbiana	1,200	1,200	1,200	1,200
Lewisburg	Preble	250	250	800	800
Lexington	Richland	400	0	1,000	1,000
Liberty Center	Henry	1,100	1,600	1,673	2,326
Little Hocking Water Association	Washington	-	-	1,000	1,000
Logan	Hocking	1,639	2,049	2,652	3,315
Louisville	Stark	800	1,600	950	1,900
Loveland	Clermont	-	-	2,900	3,625
Lynchburg	Highland	-	-	2,500	2,500
Mansfield	Richland	310	620	310	620
Marietta	Washington	450	3,450	680	3,680
Marysville	Union	6,562	7,874	4,950	5,445
Maumee	Lucas	2,000	0	2,000	0
Medina Co. Northwest	Medina	3,400	3,400	3,400	3,400
Middlefield	Geauga	5,144	0	469	0
Minerva	Stark	250	250	260	260
Minster	Auglaize	150	2,700	250	0
Monroe	Butler	-	-	2,567	2,567
Montpelier	Williams	875	975	875	975
Morgan-Meigsville - SR 376	Morgan	-	-	0	3,000
Mount Gilead	Morrow	1,700	1,700	3,335	3,335
Mount Orab	Brown	3,500	0	2,000	4,000
Mount Victory	Hardin	500	0	500	0
Munroe Falls	Summit	-	-	1,745	0

## Appendix G – 2023 Residential Tap-In Fee Responses

<u>Tap-In Fees (in Dollars \$)</u>					
<u>System Name</u>	<u>County</u>	<u>Sewer Tap Inside</u>	<u>Sewer Tap Outside</u>	<u>Water Tap Inside</u>	<u>Water Tap Outside</u>
Muskingum County	Muskingum	-	-	1,000	1,000
Napoleon	Henry	87	87	1,300	1,820
New Bremen	Auglaize	350	350	767	767
New Holland	Pickaway	1,500	2,000	1,300	1,800
New Lexington	Perry	2,200	2,200	2,200	2,200
New Philadelphia	Tuscarawas	-	-	1,550	1,550
New Waterford	Columbiana	1,500	1,500	1,500	1,500
Newcomerstown	Tuscarawas	250	250	1,100	1,100
Niles	Trumbull	300	300	100	150
Noble County Water Auth.	Noble	-	-	800	800
Noble Water Company	Noble	-	-	750	750
North Hampton	Clark	1,050	2,100	1,000	2,000
North Lewisburg	Champaign	2,413	0	4,825	0
Northern Ohio Rural Water	Huron	-	-	3,500	3,500
Northwestern W & S - Co Rd	Henry	0	0	2,850	0
Oberlin	Lorain	600	-	1,260	-
Ontario	Richland	300	0	75	0
Orient	Pickaway	6,368	0	2,750	0
Orrville	Wayne	723	723	1,620	1,620
Ottawa	Putnam	1,000	1,000	1,200	1,200
Ottawa Co.	Ottawa	2,500	2,500	2,692	2,692
Oxford	Butler	1,730	2,336	1,730	2,336
Painesville	Lake	150	0	-	-
Pemberville	Wood	700	700	900	900
Plymouth	Richland	1,000	1,000	600	600
Port Clinton	Ottawa	460	690	1,615	2,423
Powhatan Point	Belmont	500	500	500	500
Put-In-Bay	Ottawa	2,875	2,875	3,450	3,450
Ravenna	Portage	2,000	0	770	847
Rayland	Jefferson	750	0	750	0
Republic	Seneca	1,400	0	1,400	0
Reynoldsburg	Franklin	6,088	6,088	1,749	1,749
Rock Creek	Ashtabula	0	0	-	0
Roseville	Muskingum	1,000	1,500	1,000	1,500
Rural Lorain Co. Water Authority	Lorain	-	-	4,000	4,000
Rushville	Fairfield	6,000	7,500	2,500	3,500
Sabina	Clinton	2,000	2,000	2,000	2,000
Scioto Co. Sanitary - Lucasville	Scioto	450	450	-	-
Seaman	Adams	1,500	1,500	1,500	0
Sheffield	Lorain	2,175	0	980	0

## Appendix G – 2023 Residential Tap-In Fee Responses

<u>Tap-In Fees (in Dollars \$)</u>					
<u>System Name</u>	<u>County</u>	<u>Sewer Tap Inside</u>	<u>Sewer Tap Outside</u>	<u>Water Tap Inside</u>	<u>Water Tap Outside</u>
Shelby Municipal Utilities	Richland	75	0	644	644
Sherwood	Defiance	300	0	1,350	0
Sidney	Shelby	125	0	1,380	0
Silver Lake	Summit	250	0	225	0
Somerset	Perry	2,500	2,500	2,500	2,500
South Lebanon	Warren	4,000	0	4,000	4,000
South Solon	Madison	0	3,000	1,500	1,500
Southwest Licking Water & Sewer	Licking	7,873	7,873	7,885	7,885
Spencer	Medina	1,500	1,500	1,500	1,500
Spencerville	Allen	954	954	1,995	1,995
Springfield	Clark	625	625	215	215
St. Clairsville	Belmont	1,400	1,700	1,400	1,700
St. Henry	Mercer	800	1,400	500	700
Stark County Water	Stark	2,000	0	850	0
Steubenville	Jefferson	300	0	300	0
Stratton	Jefferson	0	0	750	850
Swanton	Fulton	1,000	2,500	1,000	2,500
Switzer Water Association	Monroe	-	-	1,000	1,000
Thornville	Perry	7,000	7,000	2,723	2,723
Thurston	Fairfield	-	-	5,500	5,500
Tiltonsville	Jefferson	350	0	350	0
Tipp City	Miami	1,419	1,419	1,076	1,076
Toledo	Lucas	240	0	1,800	1,980
Toronto	Jefferson	-	-	2,500	0
Trenton	Butler	800	800	2,000	2,000
Troy	Miami	1,200	0	2,000	0
Tuppers Plains Chester Water	Meigs	-	-	1,100	0
Tuppers Plains Regional Sewer District	Meigs	2,600	2,600	-	-
Twin City Water & Sewer District	Tuscarawas	2,000	2,000	2,000	2,000
Twin Rivers Water Corp.	Hamilton	-	-	2,000	2,000
Twinsburg	Summit	15,000	0	-	-
Union City	Darke	250	0	0	0
Upper Hocking	Fairfield	5,789	8,684	-	-
Urbana	Champaign	350	350	350	350
Utica	Licking	-	-	3,000	0
Van Wert	Van Wert	0	1,000	0	1,800
Vanlue	Hancock	1,000	0	2,000	0
Versailles	Darke	1,000	0	1,000	0
Walnut Creek Water Company	Holmes	-	-	2,000	0
Warren Comm W&S Association, Inc.	Washington	-	-	500	0

## Appendix G – 2023 Residential Tap-In Fee Responses

<u>Tap-In Fees (in Dollars \$)</u>					
<u>System Name</u>	<u>County</u>	<u>Sewer Tap Inside</u>	<u>Sewer Tap Outside</u>	<u>Water Tap Inside</u>	<u>Water Tap Outside</u>
Warren County Water & Sewer	Warren	9,600	0	8,000	0
Waverly	Pike	1,500	0	1,000	0
Wayne	Wood	1,000	0	1,500	1,500
Waynoka Regional WSD	Brown	2,200	0	2,200	0
West Liberty	Logan	-	-	600	0
West Manchester	Preble	750	0	650	0
West Milton	Miami	1,000	0	2,000	0
West Salem	Wayne	2,500	2,500	2,500	2,500
Westerville	Franklin	-	-	2,900	2,900
Willard	Huron	950	1,900	1,850	2,250
Woodsfield	Monroe	1,000	1,000	1,000	1,000
Woodville	Sandusky	900	1,350	600	900
Wooster	Wayne	3,500	3,500	3,250	0
Youngstown	Mahoning	600	1,500	780	875
Zanesville	Muskingum	25,120	0	51,008	2,776