

FOR IMMEDIATE RELEASE

March 7, 2025

MEDIA CONTACTS:

Tom Betti: 614-728-9645

Thomas.Betti@jfs.ohio.gov

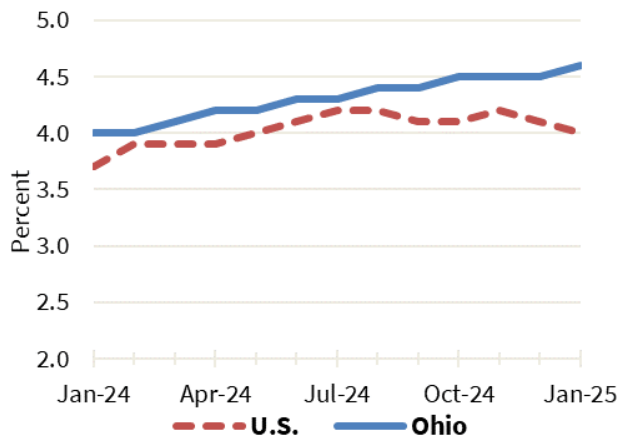
Bill Teets: 614-403-2331

Bill.Teets@jfs.ohio.gov

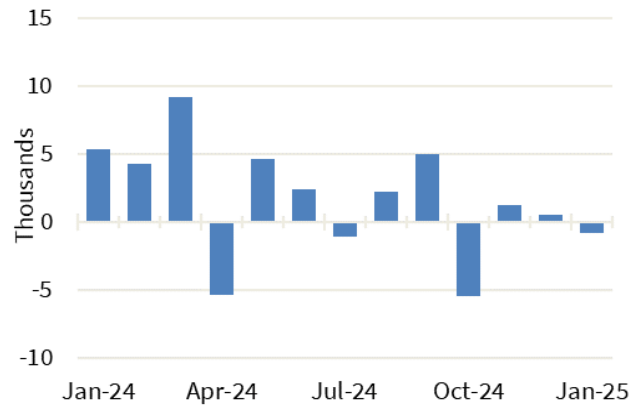
Ohio's Unemployment Rate increased to 4.6% in January

Ohio's unemployment rate was 4.6% in January 2025, up from a revised 4.5% in December 2024. Ohio's nonagricultural wage and salary employment decreased 800 over the month, from a revised 5,654,600 in December to 5,653,800 in January.

**Ohio and U.S. Unemployment Rates,
seasonally adjusted, January 2024 – January 2025**



**Ohio Nonfarm Payroll Employment Over-the-Month Change,
seasonally adjusted, January 2024 – January 2025**



Household Survey Data

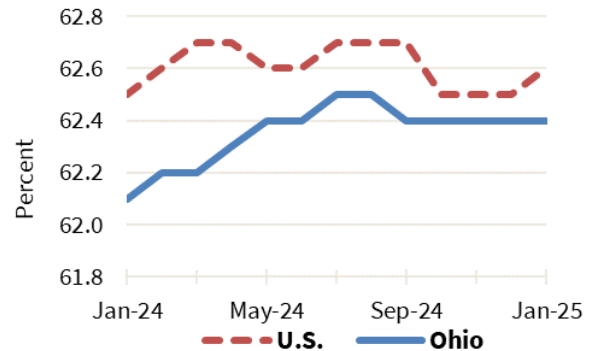
The number of workers unemployed in Ohio in January was 271,000, up from 265,000 in December 2024. The number of unemployed has increased by 39,000 in the past 12 months from 232,000. The January unemployment rate for Ohio increased 0.6 percentage points from 4.0% in January 2024.

The U.S. unemployment rate for January 2025 was 4.0%, down from 4.1% in December 2024 and up from 3.7% in January 2024.



In January 2025, the labor force participation rate in Ohio was 62.4%, unchanged from a revised 62.4% in December 2024 and up from a revised 62.1% in January 2024. During the same period, the national labor force participation rate was 62.6%, up from 62.5% in December 2024 and up from 62.5% in January 2024.

Ohio and U.S. Labor Force Participation Rates, seasonally adjusted, January 2024 – January 2025



Establishment Survey Data

Ohio's nonagricultural wage and salary employment decreased 800 over the month, from a revised 5,654,600 in December to 5,653,800 in January, according to the latest business establishment survey conducted by the U.S. Department of Labor (Bureau of Labor Statistics) in cooperation with the Ohio Department of Job and Family Services (ODJFS).

Employment in goods-producing industries, at 945,600, increased 200 over the month, as gains in manufacturing (+1,600) exceeded losses in construction (-1,300) and mining and logging (-100). The private service-providing sector, at 3,918,000, decreased 3,000 as losses in leisure and hospitality (-4,300); trade, transportation, and utilities (-1,200); financial activities (-800); and private educational and health services (-200) exceeded gains in professional and business services (+1,800); other services (+1,100); and information (+600). Government employment, at 790,200, increased 2,000, with gains in state (+1,500); local (+400); and federal (+100) government.

From January 2024 to January 2025, nonagricultural wage and salary employment increased 16,600. Employment in goods-producing industries increased 8,800, led by construction, which added 8,400 jobs. Manufacturing added 600 jobs as gains in nondurable goods (+3,100) outpaced losses in durable goods (-2,500). Mining and logging lost 200 jobs over the year. Employment in the private service-providing sector increased 6,400 as gains in private educational and health services (+21,100) and other services (+2,100) surpassed losses in trade, transportation, and utilities (-11,200); professional and business services (-2,300); leisure and hospitality (-2,100); financial activities (-900); and information (-300). Government employment increased 1,400 as gains in state (+2,300) and federal (+1,000) government outpaced losses in local government (-1,900).

EDITOR'S NOTE: All data cited are produced in cooperation with the U.S. Department of Labor. Data sources include the Current Population Survey (U.S. data), Current Employment Statistics Program (nonagricultural wage and salary employment data), and Local Area Unemployment Statistics Program (Ohio unemployment rates). More complete listings of the data appear in the monthly Ohio Labor Market Review. Unemployment rates for all Ohio counties, as well as cities with populations of 25,000 or more, are presented in the monthly ODJFS Civilian Labor Force Estimates publication. Updated statewide historical data can be obtained through the OhioLMI app, which is available for free on mobile devices



Mike DeWine, Governor | Jim Tressel, Lt. Governor | Matt Damschroder, Director

through the App Store or Google Play. Ohioans can access tens of thousands of job openings, for positions ranging from file clerks to CEOs, at <https://ohiomeansjobs.ohio.gov>.

News Release Dates

A calendar of 2025 release dates is available online at <https://ohiolmi.com/Home/Events>.

County, city, and metropolitan area unemployment rates for January 2025 will be posted online at <https://ohiolmi.com> on Tuesday, March 11, 2025. February 2025 unemployment rates and nonagricultural wage and salary data for Ohio will be released by ODJFS on Friday, March 28, 2025. This information and the monthly statistical summaries it is based on are also available at <https://jfs.ohio.gov/about/communications>.

Choose this link to view the table on the [Ohio and U.S. Employment Situation](#).

Choose this link to view the table for the [Nonagricultural Wage and Salary Employment Estimates for Ohio](#).

-30-

The Ohio Department of Job and Family Services manages vital programs that strengthen Ohio families. These include job training and employment services, unemployment insurance, cash and food assistance, adult protective services, and child support services.

