

**FOR IMMEDIATE RELEASE**

March 28, 2025

**MEDIA CONTACTS:**

Tom Betti: 614-728-9645

[Thomas.Betti@jfs.ohio.gov](mailto:Thomas.Betti@jfs.ohio.gov)

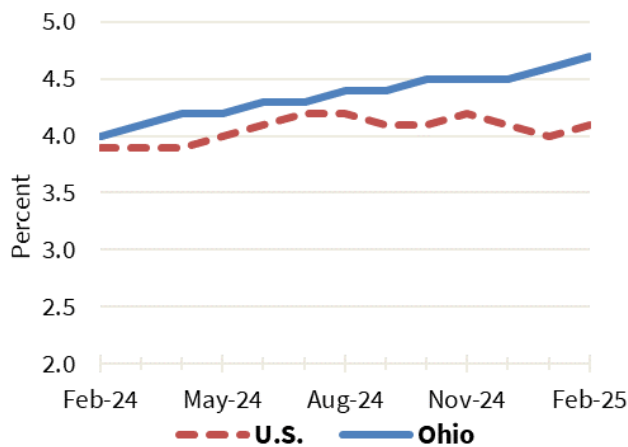
Bill Teets: 614-403-2331

[Bill.Teets@jfs.ohio.gov](mailto:Bill.Teets@jfs.ohio.gov)

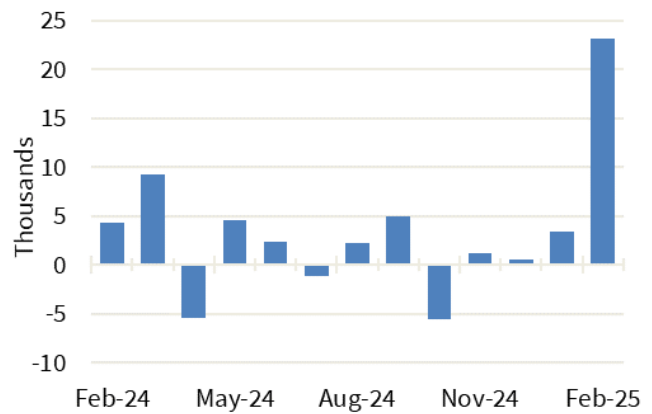
**Ohio's Unemployment Rate Increased to 4.7% in February**

Ohio's unemployment rate was 4.7% in February 2025, up from 4.6% in January 2025. Ohio's nonagricultural wage and salary employment increased 23,100 over the month, from a revised 5,658,000 in January to 5,681,100 in February.

**Ohio and U.S. Unemployment Rates, seasonally adjusted, February 2024 – February 2025**



**Ohio Nonfarm Payroll Employment Over-the-Month Change, seasonally adjusted, February 2024 – February 2025**



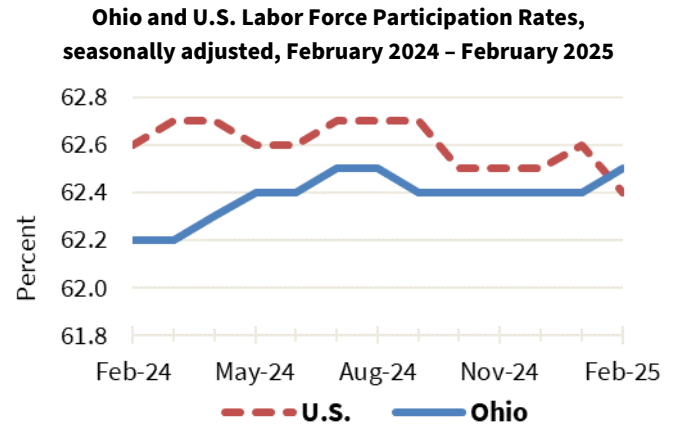
**Household Survey Data**

The number of workers unemployed in Ohio in February was 277,000, up from 271,000 in January 2025. The number of unemployed has increased by 42,000 in the past 12 months from 235,000. The February unemployment rate for Ohio increased 0.7 percentage points from 4.0% in February 2024.

The U.S. unemployment rate for February 2025 was 4.1%, up from 4.0% in January 2025 and up from 3.9% in February 2024.



In February 2025, the labor force participation rate in Ohio was 62.5%, up from 62.4% in January 2025 and up from 62.2% in February 2024. During the same period, the national labor force participation rate was 62.4%, down from 62.6% in January 2025 and down from 62.6% in February 2024.



### Establishment Survey Data

Ohio's nonagricultural wage and salary employment increased 23,100 over the month, from a revised 5,658,000 in January to 5,681,100 in February, according to the latest business establishment survey conducted by the U.S. Department of Labor (Bureau of Labor Statistics) in cooperation with the Ohio Department of Job and Family Services (ODJFS).

Employment in goods-producing industries, at 954,100, increased 8,400 over the month, in construction (+8,200) and manufacturing (+200). Employment in mining and logging did not change over the month. The private service-providing sector, at 3,939,000, increased 16,600 as gains in professional and business services (+6,500); private educational and health services (+4,800); trade, transportation, and utilities (+4,300); financial activities (+1,400); and information (+300) surpassed losses in leisure and hospitality (-400) and other services (-300). Government employment, at 788,000, decreased 1,900, with losses in state (-2,800) and federal (-200) government exceeding gains in local government (+1,100).

From February 2024 to February 2025, nonagricultural wage and salary employment increased 39,600. Employment in goods-producing industries increased 14,900, led by construction, which added 14,500 jobs. Manufacturing added 600 jobs as gains in nondurable goods (+4,700) outpaced losses in durable goods (-4,100). Mining and logging lost 200 jobs over the year. Employment in the private service-providing sector increased 25,500 as gains in private educational and health services (+22,500); professional and business services (+6,900); financial activities (+1,300); other services (+1,200); and information (+300) surpassed losses in leisure and hospitality (-3,800) and trade, transportation, and utilities (-2,900). Government employment decreased 800 as losses in local government (-2,700) outweighed gains in state (+1,600) and federal (+300) government.

**EDITOR'S NOTE:** All data cited are produced in cooperation with the U.S. Department of Labor. Data sources include the Current Population Survey (U.S. data), Current Employment Statistics Program (nonagricultural wage and salary employment data), and Local Area Unemployment Statistics Program (Ohio unemployment rates). More complete listings of the data appear in the monthly Ohio Labor Market Review. Unemployment rates for all Ohio counties, as well as cities with populations of 25,000 or more, are presented in the monthly ODJFS Civilian Labor Force Estimates publication. Updated statewide historical data can be obtained through the OhioLMI app, which is available for free on mobile devices



Mike DeWine, Governor | Jim Tressel, Lt. Governor | Matt Damschroder, Director

through the App Store or Google Play. Ohioans can access tens of thousands of job openings, for positions ranging from file clerks to CEOs, at <https://ohiomeansjobs.ohio.gov>.

#### News Release Dates

A calendar of 2025 release dates is available online at <https://ohiolmi.com/Home/Events>.

County, city, and metropolitan area unemployment rates for February 2025 will be posted online at <https://ohiolmi.com> on Tuesday, April 1, 2025. March 2025 unemployment rates and nonagricultural wage and salary data for Ohio will be released by ODJFS on Friday, April 18, 2025. This information and the monthly statistical summaries it is based on are also available at <https://jfs.ohio.gov/about/communications>.

Choose this link to view the table on the [Ohio and U.S. Employment Situation](#).

Choose this link to view the table for the [Nonagricultural Wage and Salary Employment Estimates for Ohio](#).

-30-

*The Ohio Department of Job and Family Services manages vital programs that strengthen Ohio families. These include job training and employment services, unemployment insurance, cash and food assistance, adult protective services, and child support services.*

