

Mike DeWine, Governor  
 Jon Husted, Lt. Governor  
 Matt Damschroder, Director  
 News Release  
**FOR IMMEDIATE RELEASE**  
**November 19, 2021**

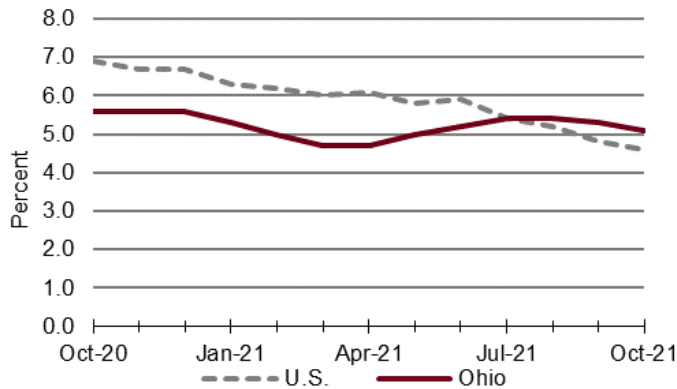
**MEDIA CONTACTS:**  
 Tom Betti, 614-817-2945  
[Thomas.betti@jfs.ohio.gov](mailto:Thomas.betti@jfs.ohio.gov)

Bill Teets, 614-403-2331  
[Bill.teets@jfs.ohio.gov](mailto:Bill.teets@jfs.ohio.gov)

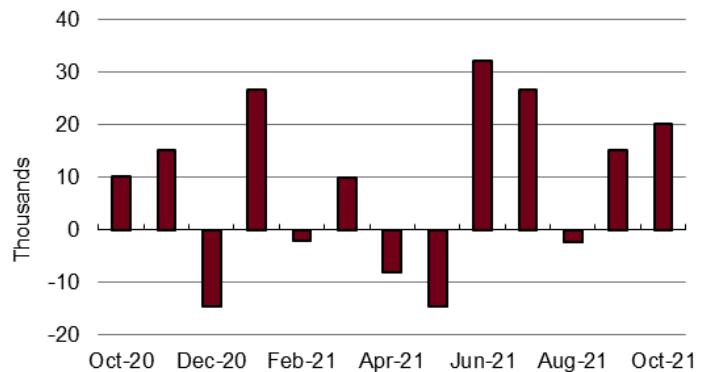
## Ohio's Unemployment Rate Decreased to 5.1% in October

Ohio's unemployment rate was 5.1% in October 2021, down from a revised 5.3% in September. Ohio's nonagricultural wage and salary employment increased 20,100 over the month, from a revised 5,361,200 in September to 5,381,300 in October 2021.

**Ohio and U.S. Unemployment Rates, seasonally adjusted  
 October 2020 – October 2021**



**Ohio Nonfarm Payroll Employment Over-the-Month  
 Change, seasonally adjusted, October 2020 – October  
 2021**

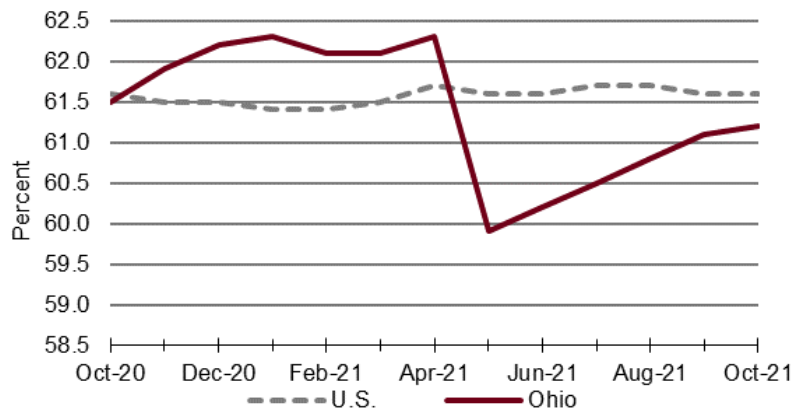


### Household Survey Data

The number of workers unemployed in Ohio in October was 289,000, down from 298,000 in September. The number of unemployed has decreased by 30,000 in the past 12 months from 319,000. The October unemployment rate for Ohio decreased from 5.6% in October 2020. The U.S. unemployment rate for October 2021 was 4.6%, down from 4.8% in September, and down from 6.9% in October 2020.

In October, the labor force participation rate in Ohio was 61.2%, up from 61.1% in September 2021 and down from 61.5% in October 2020. During the same period, the national labor force participation rate was 61.6%, unchanged from September and from one year ago.

**Ohio and U.S. Labor Force Participation Rates, seasonally  
 adjusted, October 2020 – October 2021**



## Establishment Survey Data

Ohio's nonagricultural wage and salary employment increased 20,100 over the month, from a revised 5,361,200 in September to 5,381,300 in October, according to the latest business establishment survey conducted by the U.S. Department of Labor (Bureau of Labor Statistics) in cooperation with the Ohio Department of Job and Family Services (ODJFS).

Employment in goods-producing industries, at 898,100, increased 1,900 over the month with gains in manufacturing (+1,500); construction (+300); and mining and logging (+100). The private service-providing sector, at 3,724,400, increased 18,100 as gains in leisure and hospitality (+8,200); trade, transportation, and utilities (+6,600); financial activities (+2,400); other services (+1,700); and professional and business services (+1,300) surpassed losses in educational and health services (-1,600) and information (-500). Government employment, at 758,800, increased 100 as gains in state government (+1,900) outpaced losses in local (-1,400) and federal (-400) government.

From October 2020 to October 2021, nonagricultural wage and salary employment increased 104,000. Employment in goods-producing industries increased 10,500. Manufacturing added 2,300 jobs. Nondurable goods added 3,600 jobs but durable goods lost 1,300 jobs. Construction employment increased 8,100 and mining and logging employment increased 100. The private service-providing sector added 83,400 jobs. Employment gains in leisure and hospitality (+40,200); trade, transportation, and utilities (+28,600); professional and business services (+17,000); financial activities (+1,900); and information (+1,500) exceeded losses in educational and health services (-3,300) and other services (-2,500). Government employment increased 10,100 as gains in local (+8,300) and state (+5,500) government surpassed losses in federal government (-3,700).

EDITOR'S NOTE: All data cited are produced in cooperation with the U.S. Department of Labor. Data sources include the Current Population Survey (U.S. data), Current Employment Statistics Program (nonagricultural wage and salary employment data), and Local Area Unemployment Statistics Program (Ohio unemployment rates). More complete listings of the data appear in the monthly Ohio Labor Market Review. Unemployment rates for all Ohio counties, as well as cities with populations of 50,000 or more, are presented in the monthly ODJFS Civilian Labor Force Estimates publication. Updated statewide historical data may be obtained through the OhioLMI app, which is available for free on mobile devices through the App Store or Google Play. Ohioans can access tens of thousands of job openings, for positions ranging from file clerks to CEOs, at <https://ohiomeansjobs.ohio.gov/>.

### News release dates

A calendar of 2021 release dates is available online at <https://ohiolmi.com/Home/Events>. County, city, and metropolitan area unemployment rates for October 2021 will be posted online at <https://ohiolmi.com/> on Tuesday, November 23. November 2021 unemployment rates and nonagricultural wage and salary data for Ohio will be released by ODJFS on Friday, December 17, 2021. This information and the monthly statistical summaries it is based on are also available at <https://jfs.ohio.gov/ocomm>.

Choose this link to view the table on the [Ohio and U.S. Employment Situation](#).

Choose this link to view the table on the [Nonagricultural Wage and Salary Employment Estimates for Ohio](#).

The Ohio Department of Job and Family Services manages vital programs that strengthen Ohio families. These include job training and employment services, unemployment insurance, cash and food assistance, child care, child and adult protective services, adoption, and child support services.

- [@OhioJFS](#)

- [facebook.com/OhioJFS](https://facebook.com/OhioJFS)

- [youtube.com/user/OhioJFS](https://youtube.com/user/OhioJFS)

[- https://www.pinterest.com/OhioJFS](https://www.pinterest.com/OhioJFS)