

Mike DeWine, Governor
 Jon Husted, Lt. Governor
 Matt Damschroder, Director
 News Release
FOR IMMEDIATE RELEASE
March 25, 2022

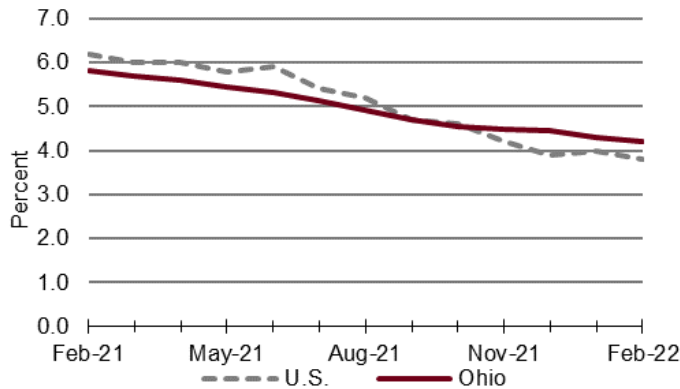
MEDIA CONTACTS:
 Bill Teets, 614-403-2331
Bill.teets@jfs.ohio.gov

Dasia Clemente, 614-817-2945
Dasia.Clemente@jfs.ohio.gov

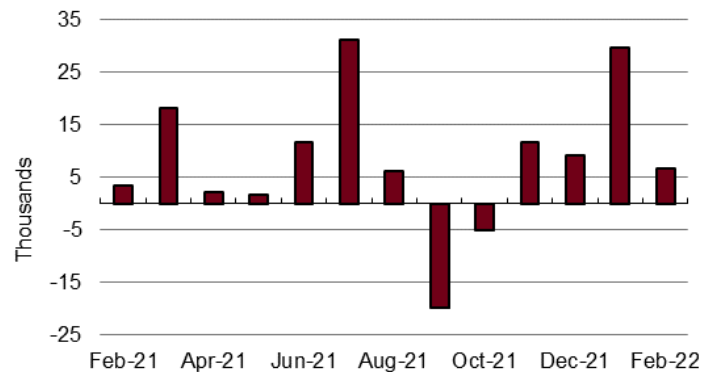
Ohio's Unemployment Rate Decreased to 4.2% in February

Ohio's unemployment rate was 4.2% in February 2022, down from 4.3% in January 2022. Ohio's nonagricultural wage and salary employment increased 6,700 over the month, from a revised 5,432,700 in January to 5,439,400 in February 2022.

Ohio and U.S. Unemployment Rates, seasonally adjusted February 2021 – February 2022



Ohio Nonfarm Payroll Employment Over-the-Month Change, seasonally adjusted, February 2021 – February 2022

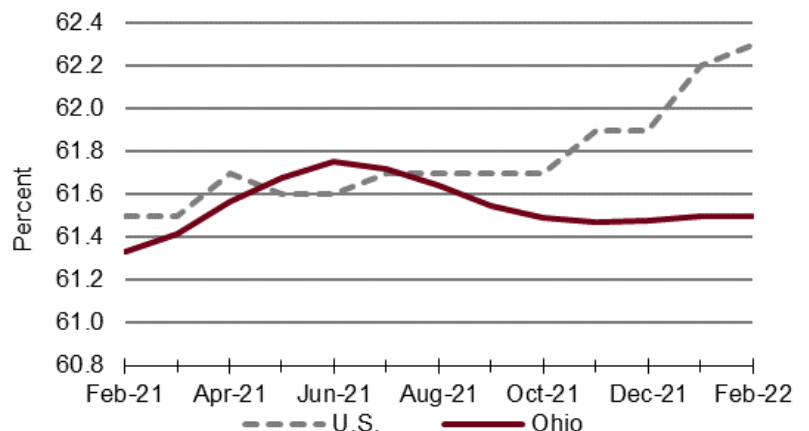


Household Survey Data

The number of workers unemployed in Ohio in February was 242,000, down from 246,000 in January. The number of unemployed has decreased by 91,000 in the past 12 months from 333,000. The February unemployment rate for Ohio decreased from 5.8% in February 2021. The U.S. unemployment rate for February 2022 was 3.8%, down from 4.0% in January 2022, and down from 6.2% in February 2021.

In February 2022, the labor force participation rate in Ohio was 61.5%, unchanged from 61.5% in January 2022 and up from 61.3% in February 2021. During the same period, the national labor force participation rate was 62.3%, up from 62.2% in January 2022 and up from 61.5% in February 2021.

Ohio and U.S. Labor Force Participation Rates, seasonally adjusted, February 2021 – February 2022



Establishment Survey Data

Ohio's nonagricultural wage and salary employment increased 6,700 over the month, from a revised 5,432,700 in January to 5,439,400 in February, according to the latest business establishment survey conducted by the U.S. Department of Labor (Bureau of Labor Statistics) in cooperation with the Ohio Department of Job and Family Services (ODJFS).

Employment in goods-producing industries, at 917,100, decreased 3,500 over the month with losses in construction (-2,800) and manufacturing (-700). Mining and logging did not change over the month. The private service-providing sector, at 3,775,500, increased 10,400 as gains in professional and business services (+4,900); trade, transportation, and utilities (+2,700); educational and health services (+1,100); leisure and hospitality (+1,000); information (+800); and other services (+400) outpaced losses in financial activities (-500). Government employment, at 746,800, decreased 200 with losses in federal (-100) and state (-100) government. Local government employment did not change over the month.

From February 2021 to February 2022, nonagricultural wage and salary employment increased 103,200. Employment in goods-producing industries increased 26,700. Manufacturing added 12,100 jobs in durable goods (+8,200) and nondurable goods (+3,900). Construction added 14,500 jobs while mining and logging employment added 100 jobs. Employment in the private service-providing sector increased 80,600 as gains in leisure and hospitality (+42,100); trade, transportation, and utilities (+22,400); professional and business services (+15,100); other services (+7,300); financial activities (+3,400); and information (+3,300) surpassed losses in educational and health services (-13,000). Government employment decreased 4,100 as losses in state government (-6,000) exceeded gains in local government (+1,900). Federal government employment did not change over the year.

EDITOR'S NOTE: All data cited are produced in cooperation with the U.S. Department of Labor. Data sources include the Current Population Survey (U.S. data), Current Employment Statistics Program (nonagricultural wage and salary employment data), and Local Area Unemployment Statistics Program (Ohio unemployment rates). More complete listings of the data appear in the monthly Ohio Labor Market Review. Unemployment rates for all Ohio counties, as well as cities with populations of 50,000 or more, are presented in the monthly ODJFS Civilian Labor Force Estimates publication. Updated statewide historical data may be obtained through the OhioLMI app, which is available for free on mobile devices through the App Store or Google Play. Ohioans can access tens of thousands of job openings, for positions ranging from file clerks to CEOs, at <https://ohiomeansjobs.ohio.gov/>.

News release dates

A calendar of 2022 release dates is available online at <https://ohiolmi.com/Home/Events>. County, city, and metropolitan area unemployment rates for February 2022 will be posted online at <https://ohiolmi.com/> on Tuesday, March 29. March 2022 unemployment rates and nonagricultural wage and salary data for Ohio will be released by ODJFS on Friday, April 15, 2022. This information and the monthly statistical summaries it is based on are also available at <http://jfs.ohio.gov/ocomm>.

Choose this link to view the table on the [Ohio and U.S. Employment Situation](#).

Choose this link to view the table on the [Nonagricultural Wage and Salary Employment Estimates for Ohio](#).

The Ohio Department of Job and Family Services manages vital programs that strengthen Ohio families. These include job training and employment services, unemployment insurance, cash and food assistance, child care, child and adult protective services, adoption, and child support services.

- [@OhioJFS](#)

- facebook.com/OhioJFS

- youtube.com/user/OhioJFS

[pinterest.com/OhioJFS](https://www.pinterest.com/OhioJFS)