

Provider Network Management & Centralized Credentialing

Go-Live/Phased Approach

| Phase | Deliverables |
|---------|--|
| Phase 1 | Enrollment, Credentialing, Provider Data Functions |
| Phase 2 | Fiscal Intermediary Integration, Cost Reporting, Hospice Beneficiary Functions |

Provider Network Management (PNM) Module

- Part of the Ohio Medicaid Enterprise Systems (OMES) modular framework
- Replaces MITS provider subsystem and the MITS secure portal (in phases)
 - » Provider enrollment applications
 - » Demographic information self-service management
 - » Enhanced and more robust provider directory to include MCP affiliation/network
- Establishes the pathway for ODM's centralized credentialing strategic initiative



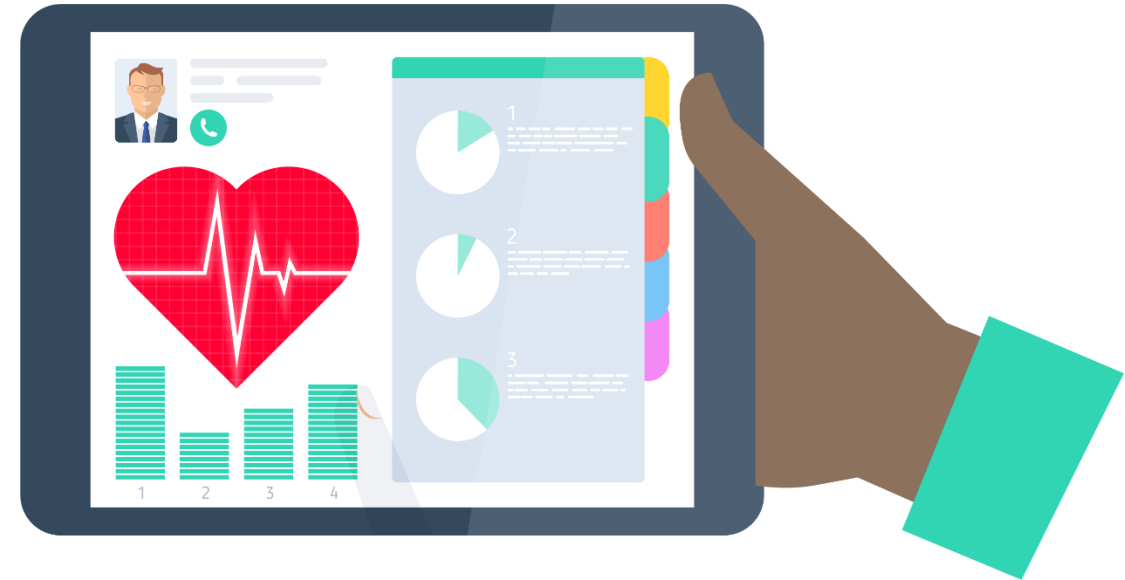
What is **New** in the PNM?

- Multiple Medicaid IDs to one NPI (phase 2)
- Ability for providers to view specialties and effective dates
- Provider change or update requests submitted in the system and reviewed in the system – not through an e-mail box or letter (includes CHOPs, name changes, adding specialties etc.)
- Comprehensive provider directory by MCO at the state level

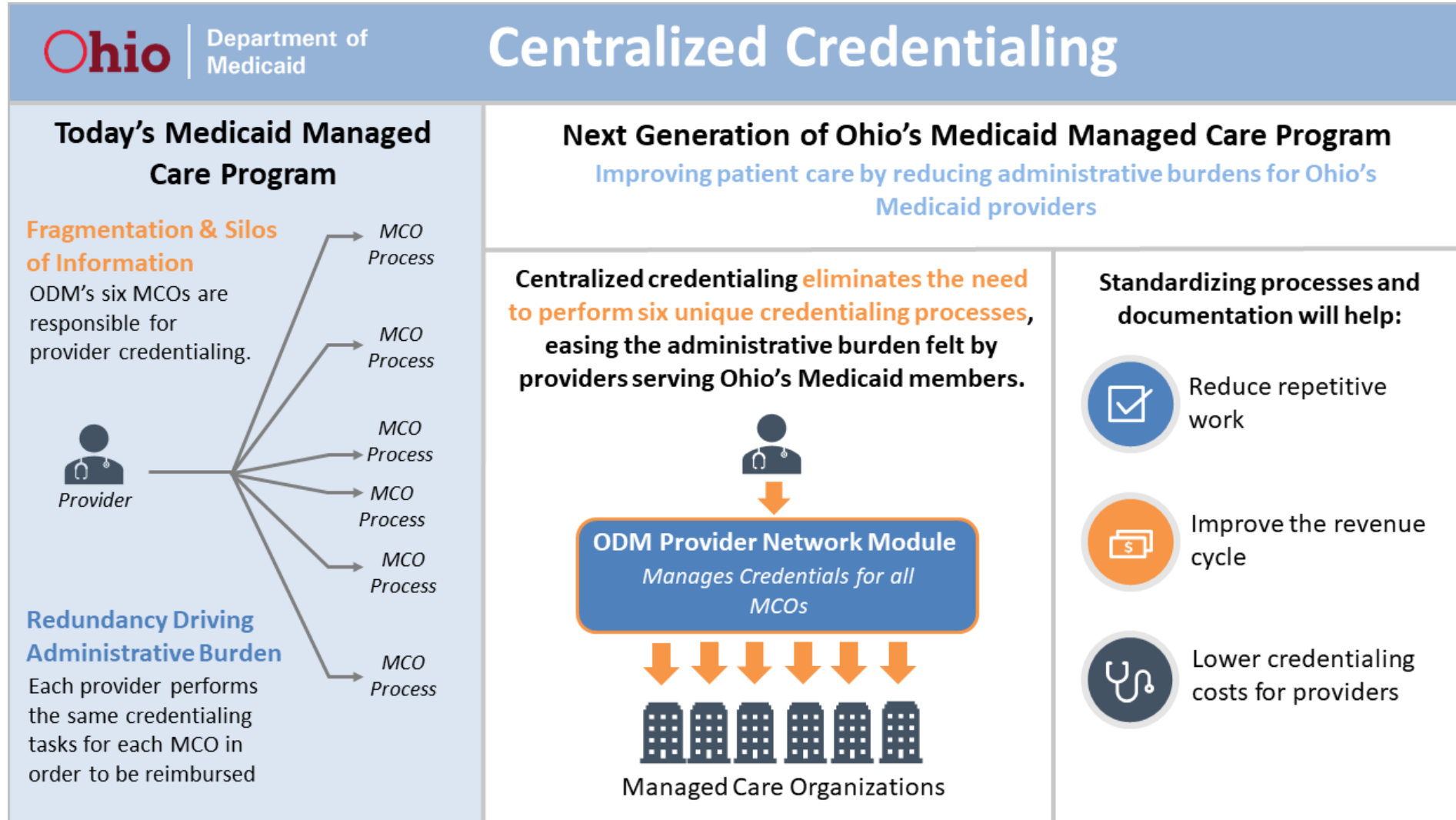


What is **New** in the PNM? (cont'd)

- Centralized credentialing - one application vs. six
- Text message notification options for providers (opt in/out)
- Online chat feature with a provider enrollment or provider assistance team member (not at go live, but several months later)
- No more paper agreements for LTC facilities – all on-line, no mailing back and forth for signatures



Centralized Credentialing



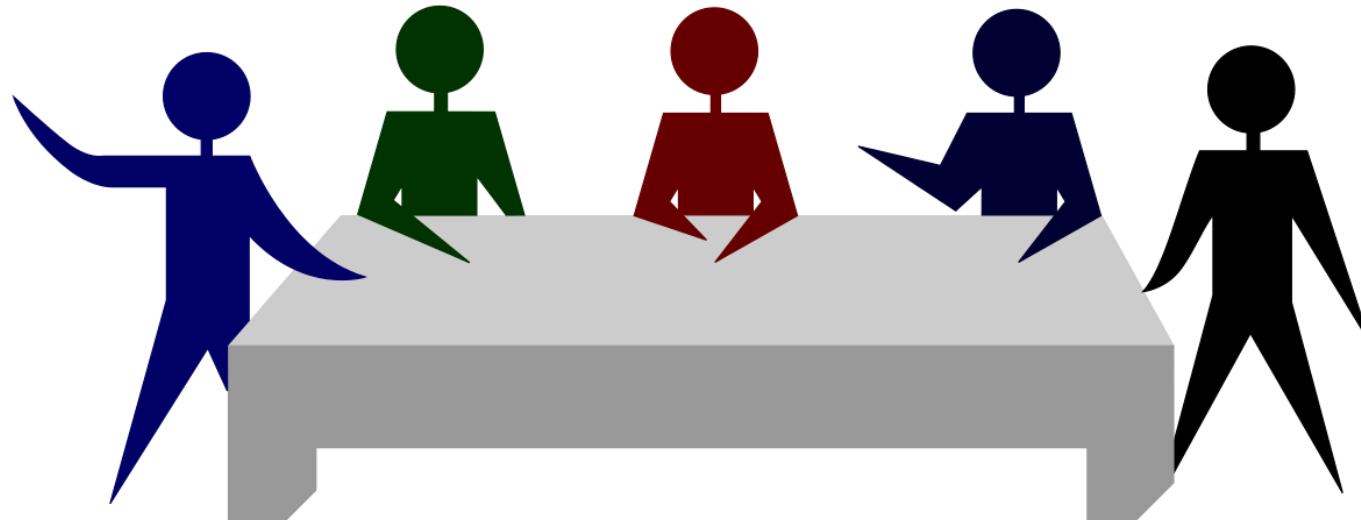
Centralized Credentialing

- Differences between enrollment and credentialing
- Individual providers who require credentialing – only those providers who can practice independently under state law
- CVO model – transition between ODM and CVO utilizing PNM
- Data transition from the plans – timelines, data received, benefits to the provider



Credentialing Committee

- Composition – community-based providers, MCP representatives, CVO representatives
- Roles and responsibilities
- What constitutes an “adverse” file



For More Information/ Q & A

Additional information can be found on the following website:

- [PNM & Centralized Credentialing](#)

Questions can be sent to the following email boxes:

- ***Centralized Credentialing:*** Credentialing@medicaid.ohio.gov
- ***Provider Network Management (PNM) Module:*** PNMCommunications@medicaid.ohio.gov