

# Ohio Comprehensive Maternal Care (CMC) Per-Member Per-Month (PMPM) and Quality Incentive Payments

Program Year 2026  
Office of Strategic Initiatives

---



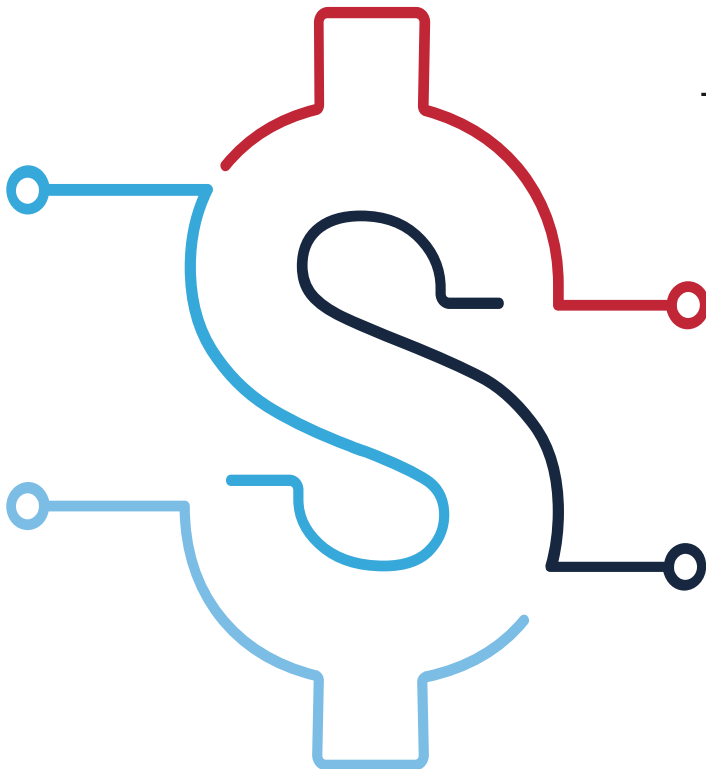
# CMC Payments: Per Member Per Month (PMPM) and Quality Incentive (QIP) Payments

## **PMPM PROSPECTIVE**

- Quarterly per member per month payments to support CMC program population health activities.
- MCOs have 15 business days to pay managed care payments.

## **Standard Risk \$15 PMPM**

- Includes pregnant and postpartum women up to three months postpartum who do not qualify under the enhanced risk tier.



## **Enhanced Risk**

### **\$40 PMPM**

- Includes pregnant and postpartum individuals at risk for a pre-term birth, live in an area with the least access to services according to the Ohio Opportunity Index (OOI) or are considered medically complex.

## **QIP**

### **\$8,000 per point – up to \$24,000**

#### **Paid out after the program year**

One point may be awarded for:

- Participation in a perinatal quality collaborative or safety bundle
- Integration of community partners
- Integration of patient feedback

## CMC Payments – Example Calculation

### CMC OB/GYN Practice Attribution

- 300 women/month in Standard tier
- 200 women/month in Enhanced tier
- *\*\*Assume attribution ratio stays the same throughout the year*
  
- Quality Incentive Payments:
  - One point for working on a QI project with OPQC
  - One point for integrating HUB referrals

### Calculation:

Q1 2026 PMPM Payment:

$$(300 \times \$15) + (200 \times \$40) = \\ \$12,500/\text{month}$$

$$\$12,500 \times 3 \text{ months} = \$37,500$$

Annual PMPMs for 2026:

$$(\$37,500 \times 4 \text{ quarters}) = \$150,000$$

Quality Incentive:

$$\$8,000 \times 2 \text{ points} = \$16,000$$

### Annual Payment for 2026:

**\$150,000 in PMPMs + \$16,000 in Quality Incentive Payments = \$166,000\***

\*This payment is on top of reimbursement for perinatal services claims payment.