

ADDENDUM

PROJECT: DOT-200009 Putnam County FSMF

DATE: 02/21/2025

ADDENDUM NO.: 1

PROJECT: 240652

This addendum must be receipted for on the proposal form.

TO ALL BIDDERS:

This addendum supplements and amends the original drawings and project manual and shall be taken into account in preparing proposals and shall become a part of the contract document.

NOTE: Addenda are issued via Bid Express. Each Prime Contractor is responsible for notifying subcontractors of any addenda issue.

Item #1 Pre-Bid Meeting

- The following companies were represented at the voluntary February 19, 2025 pre-bid meeting (see attached sign-in sheet):
 - ACI
 - Helms and Sons
 - Lathrop
 - Touchstone CPM

Item #2 Pre-Bid Meeting Minutes

- See attached pre-bid meeting minutes

Item #3 Specification Table of Contents

- See attached revised Specification Table of Contents adding 00 11 13 Advertisement for Bids.

Item #4 Specification Section 00 11 13 Advertisement for Bids

- See attached new specification section 00 11 13 Advertisement for Bids.

Item #5 Specification 00 41 13 Bid Form

- See attached revised specification section 00 41 13 Bid Form.

Item #6 Specification Section 07 61 00 Sheet Metal Roofing and Wall Panels

- Clarification: Please see sheet metal roofing and wall panels information removed from specifications. Please see spec 07 41 13 & 07 42 13 for information on the insulated metal roof and wall panels. Spec was renamed to be "Metal Roof and Wall Accessories".

Item #7 Specification Section 10 44 00 Fire Protection Specialties

- Revision: Fire extinguisher was added to the Oil Storage Room (Room #127).

Item #8 Specification Section 11 11 00 Vehicle Service Equipment

- Clarification: The bulk tank for waste oil shall be 500 gallons vertical, stand-on-end, double walled tank with 110 percent capacity. The tanks dimensions are to be 54 inches long x 38 inches wide (the width shall be held for tanks to fit in room) x 68 inches high plus or minus.
- Clarification: Under section 2.3 Lubrication Equipment Item B.4 Grease pump system shall be removed from this project.

Item #9 Specification Section 11 11 19.20 Interior Oil Piping

- Clarification: Motor Oil and Hydraulic Oil Piping: ASTM A312 Schedule 40 stainless steel pipe Type 316/316L or hydraulic tubing, 1200 PSI operating pressure, (5/8 in. – 0.083 in. wall, 3/4 in. – 0.095 in. wall, 1 in. – 0.12 in. wall). Fittings shall be compatible with the pipe with similar characteristics.

Item #10 Specification Section 26 32 13 Packaged Engine Generators

- Under part 2.1.E.1), delete, “with base mounted fuel tank with 24 hour fuel supply capacity.”

Item #11 Sheet A2.1 Office / Truck Storage Floor Plan

- Revision: Please see revised plan for location of DEF tote and pump. DEF tote and pump will be by owner.

Item #12 Sheet A2.2 Wash Bay and Maintenance Bay Floor Plan

- Revision: Fire extinguisher was added to the Oil Storage Room (Room #127).
- Clarification: The Maintenance Reel Schedule has been updated to match the oil storage room plan.
- Revision: Please see revised drawing for layout of oil storage room.

Item #13 Sheet P2.2

- Clarification: The dispensing fluids and waste oil as shown on drawing A2.2 and P2.2 has been revised. Bulk Lubrication Storage Tanks shall be Motor Oil #1, Motor Oil #2, Hydraulic Oil #1, Hydraulic Oil #2, ATF and waste oil. The bulk storage tanks are 275 gallons for dispensing fluids and 500 gallons for the waste oil tank.

Item #14 Sheet P2.3

- Clarification: The Storage Tank Detail has been revised. The dispensing fluids and waste oil as shown on drawing A2.2 and P2.2 shall apply. Bulk Lubrication Storage Tanks shall be Motor Oil #1, Motor Oil #2, Hydraulic Oil #1, Hydraulic Oil #2, ATF and waste oil. The bulk storage tanks are 275 gallons for dispensing fluids and 500 gallons for the waste oil tank. Item 11, Drum for Grease on Storage Tank Detail of Drawing P2.3 is not a dispensing fluid for this project and has been removed. The compressed air pump assembly, coded note #2 shall be tank mounted for dispensing fluids and wall mounted for waste oil.

Item #15 Sheet E0.2 Panel Schedules

- Revision: Drawing was revised to include power to an outlet in the Truck Storage Building. The outlet will be used to power the DEF tote pump.

Item #16 Sheet E2.1 Office / Truck Storage Power Plan

- Revision: Drawing was revised to include power to an outlet in the Truck Storage Building. The outlet will be used to power the DEF tote pump.

Attachments:

Pre-Bid Sign-in Sheet
Pre-Bid Meeting Minutes
Revised Specification Table of Contents
New Specification 00 11 13
Revised Specification 00 41 13 Bid Form
Revised Specification 07 61 00
Revised Specification 10 44 00
Revised Sheet A1.2
Revised Sheet A2.2
Revised Sheet P2.2
Revised Sheet P2.3
Revised Sheet E0.2
Revised Sheet E2.1

END OF ADDENDUM No. 1

PRE-BID MEETING MINUTES

PROJECT: New Putnam County FSMF
LOCATION: Village of Ottawa, Ohio
PROJECT #: DOT-200009
DATE: February 19, 2025
TIME: 10:00 am

Agenda

- A. Introductions
- B. Project Delivery Method: General Single Prime Contract
- C. Bids shall be received no later than:

Date: March 6, 2025 2:00 pm
<https://bidexpress.com>

- D. Bid Express Procedures (Mark Green)
- E. Project Award will be made within 60 days of Bid Opening.-
- F. This project will be managed in the State of Ohio OAKS-CI System. The contractor is responsible for learning the system and managing the project through OAKS-CI. (power point tutorial can be provided)
- G. This project requires Prevailing Wages to be paid. See Wage Rate Requirements sections and schedule listed in the front end section of the Bid Package.
- H. All Bidders & their on-site subcontractors on a state administered project are required to be enrolled and in good standing in the Ohio Bureau of Worker’s Compensation (BWC), Drug-Free Workplace Program (DFWP)(as we as subs) and have a Certificate of Compliance for the State’s Equal Employment Opportunity (EEO) at the time of the contract award.
- I. Vendors must be registered to do business in Ohio (with good standing).
- J. BWC Office Presentation
- K. This project is subject to the State of Ohio Encouraging Diversity, Growth and Equity Business Development Program (EDGE). The EDGE Participation Goal is 5.0%.

- A/E:
- L. Addendum will be issued for approved substitutions. Only changes in writing by addendum shall be binding. Addenda will go out no later than 72 hours before bid opening. **(NLT March 3, 2023 2:00 pm)**
 - RFI’s are due 2/24/25 via email to: kent@buehrergroup.com Note to AE that addenda must be approved by owner.*

M. Project Estimate:

<u>Trade</u>	<u>Estimate</u>
General Contract	\$ 10,800,000.00
Alternate 1:	\$ 58,529.00
Alternate 2:	\$ 44,055.00
Alternate 3:	\$ 71,032.50
Alternate 4:	\$ 45,154.00

- N. Substantial Completion for the project is 450 Calendar Days after Notice to Proceed is issued.
*Request for Additional time will need backup documentation. i.e. more than average weather days, etc.

Description of Work Overview A/E

- O. The project located at 9979 State Route 109; Ottawa, Ohio 45875. The project is known as the new Putnam County FSMF. ODOT has cut down many of the trees on the site required for this project. It will be the responsibility of the contractor to remove tree stumps and any other debris as part of their contract. Some piecemeal tree removal may still be needed as well to facilitate fence installation. The contractor is to:

Provide all work as described in the project documents. This includes supplying all material and labor in accordance with the drawings, specifications and contract documents.

- P. Supplementary Conditions. See specification section 00 73 00.
- Q. Allowances. See specification section 01 21 00.
 - a. Putnam County FSMF
 - i. Village of Ottawa, Ohio \$46,500.00
 - ii. Dominion/Enbridge Energy \$62,796.35
 - iii. Ohio Power \$25,089.03
 - iv. NWOSS fee \$7,280.80
- R. Unit Costs. See specification section 01 27 00
 - a. Putnam County FSMF
 - i. Under cut – 500 Cubic Yards
 - ii. Engineered compacted backfill – 500 Cubic Yards
 - iii. Rock removal – 100 cubic yards
 - iv. Lean concrete – 100 cubic yards
- S. Temporary Facilities. See specification section 01 50 00.
- T. Contractor is responsible for leaving the work area in a clean and workable condition on a daily basis.
- U. Contractor is responsible for the security of all materials on site.
- V. Construction Progress Schedule – specification section 01 32 16
- W. Buehrer Group Architecture & Engineering, Inc. has filed for plan approval with the Ohio Department of Commerce and received either partial or full plan approval for each structure.
- X. The NOI permits have been filed for and obtained. The awarded contractor will be required to sign on as a co-permittee to the NOI permit.
- Y. A preconstruction meeting will be held with the contractors and representatives from Industrial Compliance and the testing agency retained by the architect on behalf of ODOT.
- Z. Buehrer Group Architecture & Engineering, Inc. will retain a testing company for special inspections.
- AA. Buehrer Group has retained Multivista for photo documentation services, which the contractor shall cooperate with.
- BB. Procedures for additional site visits. – Contractors are welcome to visit the site. Just do not step on to neighboring properties.
- CC. Deadline for substitution requests – 5:00 PM Thursday February 23, 2025
- DD. Useful Information/clarifications:
 - a. No-Smoking Policy: State property is strictly no smoking. Smoking will not be permitted while working and on the grounds of the site. Smokers are to use their personal vehicles during break times for smoking and dispose of their tobacco waste appropriately. Litter on the job site from smoking activities will not be tolerated and may result in withholding of payment and/or removal of persons from the job site.
 - b. Adequate tele-conference capability shall be provided in the work trailer including a large size wall mounted monitor, camera capable of seeing the entire conference room and ability to connect laptops.

WIFI network speed cable of accommodating a team of staff using Microsoft TEAMS is required in the job trailer. See section 01 50 00 for more information.

- c. Payment for materials will only be available once the products are procured, fabricated and properly stored (either onsite or offsite) or installed. Payment will not be made in advance for down payments, shop drawings, engineering, etc.
- d. Document 00 72 13 - General Conditions (as supplemented by 00 73 00) defines the state requirements for public construction projects and the main terms of the general contracting project. The bidding contractor should thoroughly review the general condition prior to the submission of bids as all terms within this section are binding to the contract.
- e. Volatility in the market such as supply chain delays and inflation are known issues prior to bidding. The awarded general contractor will be expected to anticipate the market conditions and manage submittals, procurement, and schedule to avoid delays and cost increases. In general, the bidding contractor shall assume that change orders and/or schedule extensions will not be considered due to long lead materials, delivery delays and fluctuating pricing.
- f. All subcontractors will be required to furnish certificate of insurance with minimum coverages listed in the general conditions as part of their SMSD submission. Minimum coverages shall be assumed to be required for ALL subcontracts regardless of contract amount and this should be included in their contracts and the GC's bids. In rare, limited circumstances, the minimum insurance requires have been permitted to be reduced with low risk, small value subcontracts after careful review and approval by the contracting authority. The contractor takes the risk reducing their bids and the subcontracts assuming not providing minimum insurance requirements for certain contracts in the event the request is denied.

EE. Anticipated Addendum No. 1 Items planned to be issued on February 21, 2025.

- a. Removal of Specification Section 07 61 00 Sheet Metal Roofing and Wall Panels
- b. Adding a fire extinguisher to Oil Storage Room 127.
- c. Clarifying the Bulk Waste Oil Tanks size of 500 gallons.
- d. Clarifying that Motor Oil and Hydraulic Oil piping shall be Schedule 40 stainless steel pipe.
- e. Removing the reference to a base mounted fuel tank for the generator in specification section 26 32 13 Packaged Engine Generators.
- f. Item 11, Drum for Grease on Storage Tanks Detail on Drawings P2.3 has been removed.

FF. Scope Reviews planned for March 10 and 11.

GG. Successful bidder will be required to submit to OFCC in 3 Days

- a. Original of bid guarantee
- b. Bidders qualifications

HH. Successful bidder will be required to submit to OFCC in 10 Days

- a. Certificate of compliance with Affirmative action program
- b. EDGE affidavits
- c. Certificate of Compliance for Surety
- d. Certificate of good standing with the state of Ohio
- e. Evidence of enrollment in DSFP program prior to bidding
- f. COI's
- g. Supplier ID for Ohio Pays

II. Questions

- a. How Many trees have been cut down? Approximately 40 to 50 trees have been cut down.
- b. Any excess dirt shall stay on site.

Document 00 01 10 - Table of Contents (General Contracting Project) State of Ohio Standard Requirements for Public Facility Construction

PROCUREMENT AND CONTRACTING REQUIREMENTS GROUP

Division 00 – Procurement and Contracting Requirements

Introductory Information

00 01 10Table of Contents

Procurement Requirements

00 10 00Solicitation
00 11 13Advertisement for Bids
00 21 13Instructions to Bidders
00 31 32Geotechnical Data
00 41 13Bid Form
00 43 13Bid Security Form
00 45 13Bidder's Qualifications
00 45 39EDGE Affidavit

Contracting Requirements

00 52 00Agreement Form
00 52 14Subcontract Form (OAC 153:1-03-02)
00 61 13Performance and Payment Bond Form
00 61 13.19Acknowledgement of Surety
00 71 00Contracting Definitions
00 72 13General Conditions
00 73 00Supplementary Conditions
00 73 43Wage Rate Requirements

SPECIFICATIONS GROUP

GENERAL REQUIREMENTS SUBGROUP

Division 01 – General Requirements

01 21 00Allowances
01 23 00Alternates
01 25 00Substitution Procedures
01 27 00Unit Prices
01 31 00 Project Management and Coordination
01 32 16Construction Progress Schedule
01 33 00Submittal Procedures
01 40 00Quality Requirements
01 50 00Temporary Facilities and Controls
01 60 00Product Requirements
01 73 00Execution Requirements
01 77 00Closeout Procedures
01 78 23Operation and Maintenance Data
01 78 39Project As-Built Documents
01 79 00Demonstration and Training
01 91 13General Commissioning Requirements

FACILITY CONSTRUCTION SUBGROUP

Division 03 – Concrete

03 10 00Concrete Forming
03 11 13Structural Cast-in Place Concrete Forming
03 15 00Concrete Accessories
03 30 00Cast-In-Place Concrete
03 35 00Concrete Finishing

- 03 39 00Concrete Curing
- 03 41 00Pre-Cast Concrete
- 03 45 00Pre-Cast Concrete Interlocking Block

Division 04 – Masonry

- 04 05 13Masonry Mortaring
- 04 05 16Masonry Grout
- 04 05 19Masonry Anchorage and Reinforcing
- 04 20 00Unit Masonry

Division 05 – Metals

- 05 10 00Structural Metal Framing
- 05 50 00Metal Fabrication
- 05 51 00Metal Stairs

Division 06 – Wood, Plastics, and Composites

- 06 10 00Rough Carpentry
- 06 16 00Sheathing
- 06 60 00Plastic Fabrications

Division 07 – Thermal and Moisture Control

- 07 21 00Thermal Insulation
- 07 22 00Ventilated Nailbase Insulation Panels
- 07 27 26Fluid-Applied Membrane Air Barriers
- 07 31 13Asphalt Shingles
- 07 41 13Insulated Metal Roof Panels
- 07 42 13Insulated Metal Wall Panels
- 07 61 00Metal Roof and Wall Accessories
- 07 62 00Sheet Metal Flashing and Trim
- 07 62 20Roof Edge Venting
- 07 92 00Joint Sealants

Division 08 – Openings

- 08 11 13Hollow Metal Doors and Frames
- 08 11 16Aluminum Doors and Frames and FRP Doors
- 08 31 13Access Doors & Frames
- 08 36 00Sectional Doors
- 08 51 13Aluminum Windows
- 08 56 53Security Windows
- 08 71 00Door Hardware
- 08 71 13Automatic Door Operators
- 08 81 00Glass Glazing
- 08 85 00Glazing Accessories

Division 09 – Finishes

- 09 21 16Gypsum Board Assemblies
- 09 30 13Ceramic Tiling
- 09 51 00Acoustical Ceilings
- 09 65 00Resilient Flooring
- 09 91 00Paints and Stains

Division 10 – Specialties

- 10 12 00Display Cases
- 10 14 00Interior and Exterior Signage
- 10 21 13Toilet Compartments
- 10 26 13Wall Protection
- 10 28 00Toilet and Custodial Accessories
- 10 44 00Fire Protection Specialties
- 10 51 13Lockers
- 10 56 13Storage Shelving
- 10 75 00Flagpoles

Division 11 – Equipment

- 11 11 00Vehicle Service Equipment
- 11 11 19.20Interior Grease/Oil Piping Systems
- 11 31 00Residential Appliances

Division 12 – Furnishings

- 12 21 60Windo Blinds
- 12 32 16Manufactured Plastic-Laminate Faced Casework
- 12 50 00Furniture
- 12 57 00Industrial Furniture

Division 13 – Special Construction

- 13 31 23Tension Fabric Structures
- 13 34 19Metal Building Systems

Division 14 – Conveying Equipment

- 14 45 00.01Vehicle Lifts
- 14 45 00.02Mobile Column Vehicle Lifts

FACILITY SERVICES SUBGROUP

Division 21 – Fire Suppression

- 21 00 00General Provisions
- 21 05 29Hangers and Supports for Fire-Suppression Piping and Equipment
- 21 10 00Wet Pipe Sprinkler Systems

Division 22 – Plumbing

- 22 00 00General Provisions
- 22 05 00Common Work Results for Plumbing
- 22 05 09General Plumbing Piping Requirements
- 22 05 23General-Duty Valves for Plumbing Piping
- 22 05 29Hangers and Supports for Plumbing Piping
- 22 05 53Identification for Plumbing Piping and Equipment
- 22 07 00Plumbing Piping Insulation
- 22 08 00Commissioning of Plumbing Systems
- 22 11 13Facility Water Distribution Piping
- 22 11 16Domestic Water Piping
- 22 11 19Domestic Water Piping Specialties
- 22 11 24Facility Natural Gas Piping
- 22 13 16Sanitary Waste and Vent Piping
- 22 13 23Oil Interceptors
- 22 15 00Compressed Air Systems
- 22 34 36Gas Fired Water Heater
- 22 42 00Commercial Plumbing Fixtures
- 22 45 00Emergency Plumbing Fixtures
- 22 47 00Drinking Fountains and Water Coolers

Division 23 – Heating, Ventilating, and Air Conditioning

- 23 00 00General Provisions
- 23 05 29Hangers and Supports for HVAC Piping and Equipment
- 23 05 53Identification for HVAC Piping and Equipment
- 23 05 93Testing, Adjusting and balancing for HVAC
- 23 07 00HVAC Insulation
- 23 08 00Commissioning of HVAC Systems
- 23 09 00HVAC Control System
- 23 09 23Sequence of Operations for HVAC Controls
- 23 09 33Electric and Electronic Control System for HVAC
- 23 23 00Refrigerant Piping
- 23 31 13Low Pressure Ductwork
- 23 33 00Ductwork accessories
- 23 34 00HVAC Fans

- 23 37 13Air Outlets
- 23 54 16Warm Air Furnaces
- 23 62 13Refrigerant Condensing Units
- 23 73 39Direct Fired Makeup Air Units
- 23 81 26Split System Air-Conditions
- 23 83 00Radiant Heating Units
- 23 83 42Electric Wall Heaters

Division 26 – Electrical

- 26 00 50General Provisions
- 26 00 60Temporary
- 26 05 00Electric Utility Services
- 26 05 11Equipment Hook-up and Final Connection
- 26 05 19Low-Voltage Electrical Power Conductors and Cables
- 26 05 26Grounding and Bonding for Electrical Systems
- 26 05 33Raceway and Boxes
- 26 05 34Wireways
- 26 05 53Identification for Electrical Systems
- 26 08 00Commissioning of Electrical Systems
- 26 09 00Instrumentation and Control for Electrical Systems
- 26 09 23Lighting Control Devices
- 26 24 16Panelboards
- 26 27 26Wiring Devices
- 26 28 13Fuses
- 26 28 16Enclosed Switches and Circuit Breakers
- 26 29 13Enclosed Controllers
- 26 32 13Packaged Engine Generators
- 26 36 00Transfer Switches
- 26 43 13Transient Voltage Suppression for Low-voltage Electrical Power Circuits
- 26 51 00Interior Lighting
- 26 56 00Exterior Lighting

Division 27 – Communications

- 27 05 26Grounding and Bonding for Communications Systems
- 27 11 00.04Communications Equipment Room Fittings
- 27 13 13Communications Copper Backbone Cabling
- 27 13 23Communications Optical Fiber Backbone Cabling
- 27 15 00Communications Horizontal Cabling
- 27 15 33Coaxial Communications Horizontal Cabling
- 27 15 43Audio-Video Communications Horizontal Cabling Drop Schedule

Division 28 – Electronic Safety and Security

- 28 15 00Intrusion Detection and Access Control
- 28 24 00Closed Circuit Television System
- 28 31 00 Fire Detection and Alarm

SITE AND INFRASTRUCTURE SUBGROUP

Division 31 – Earthwork

- 31 10 00Site Clearing
- 31 20 00 Earthwork

Division 32 – Exterior Improvements

- 32 12 16Asphalt Paving
- 32 13 13Concrete Paving
- 32 31 00 Vertical Pivot Gates
- 32 31 13Chain Link Fences and Gates
- 32 90 00Landscape Work

Division 33 – Utilities

- 33 30 00Sanitary Sewers
- 33 40 00 Storm Drainage Utilities
- 33 51 00Natural Gas Distribution
- 33 56 13Aboveground Fuel-Storage Tanks

PROCESS EQUIPMENT SUBGROUP

Division 41 – Material Processing and Handling Equipment

- 41 22 13Bridge and Monorail Cranes

Division 43 – Process Gas and Liquid Handling Equipment

- 43 22 56Salt Brine Production System

END OF DOCUMENT

Public Bid Advertisement (Electronic Bidding)

State of Ohio Standard Forms and Documents

DOT-200009
New Putnam County FSMF
Ohio Department of Transportation
Village of Ottawa, Ohio

Bids Due: 2:00 P.M. local time, March 6, 2025; through the State's electronic bidding system at <https://bidexpress.com>

EDGE Participation Goal: 5.0% of contract

Domestic steel use is required per ORC 153.011.

<u>Contract</u>	<u>Estimated Cost</u>
General Contract	\$10,800,000.00
Alternate 1	\$58,529.00
Alternate 2	\$44,055.00
Alternate 3	\$71,032.50
Alternate 4	\$45,154.00

And any proper combination submitted on electronic Bid Form

Pre-bid Meeting: February 19, 2025, 10:00 A.M. – 11:00 A.M., District One – Putnam County, 617 11th Street, Ottawa, OH 45875, followed by a property site visit

More Info: A/E contact: Buehrer Group Architecture & Engineering, Inc., Phone: 419-893-9021, Fax: 419-893-9027 E-mail: kent@buehrergroup.com

Bid Documents: <https://bidexpress.com>

----- end of advertisement—do not publish this line -----

APPROVED FOR PUBLICATION

In: Putnam County Sentinel
On: February 12, 2025
February 19, 2025
February 26, 2025

Ohio Facilities Construction Commission

Amber Cantrell
Project Coordinator

2/4/2025
Date

RECEIVED BY:

Type or print name of authorized representative

Signature

Date

Document 00 41 13 - Bid Form (General Contract / Electronic Bid)

State of Ohio Standard Requirements for Public Facility Construction

THIS SAMPLE BID FORM IS PROVIDED WITH THE PROJECT MANUAL AS A PLACEHOLDER ONLY – SUBMIT YOUR BID USING THE ELECTRONIC BID FORM ON [HTTPS://BIDEXPRESS.COM](https://bidexpress.com)

▣ General Info	Alt Total:	Bid Total:
<p>Deadline 03/06/2025 2:00 PM /EST</p> <p>Advertised 02/12/2025, 02/19/2025, 02/26/2025</p> <p>Number DOT-200009</p> <p>Business Name Ohio Department of Transportation</p>	<p>Description New full service maintenance facility including site work, office/maintenance/truck storage/wash bay building, cold storage building, material storage building, salt storage building with attached brine production shelter, fuel island, and fencing on a building site for The Ohio Department of Transportation – District #1 in Ottawa Township, Ohio.</p>	

▣ Procurement Documents
→ M299-03-Public_Bid_Advertisement-eBid (002)
→ 00 10 00.EB-Solicitation_GC
→ DOT-200009 Putnam bid phase Specification
→ DOT-200009 Putnam bid phase drawings
4 Attachments

▣ Contract Times and Addenda								
<div style="border: 1px solid black; padding: 5px; margin-bottom: 10px;"> <p style="margin: 0;">Contract Times</p> <p style="margin: 0;">The time for Substantial Completion of all Work is 450 consecutive days from the Notice to Proceed.</p> </div> <div style="border: 1px solid black; padding: 5px;"> <p style="margin: 0;">Acknowledgement of receipt of Addenda</p> <table style="width: 100%; text-align: center; border-collapse: collapse;"> <tr> <td style="width: 25%;">Date Addendum #1 Received</td> <td style="width: 25%;">Date Addendum #2 Received</td> <td style="width: 25%;">Date Addendum #3 Received</td> <td style="width: 25%;">Date Addendum #4 Received</td> </tr> <tr> <td style="border: 1px solid black; height: 20px;"></td> <td style="border: 1px solid black; height: 20px;"></td> <td style="border: 1px solid black; height: 20px;"></td> <td style="border: 1px solid black; height: 20px;"></td> </tr> </table> </div>	Date Addendum #1 Received	Date Addendum #2 Received	Date Addendum #3 Received	Date Addendum #4 Received				
Date Addendum #1 Received	Date Addendum #2 Received	Date Addendum #3 Received	Date Addendum #4 Received					

▣ Allowance Instructions
<p>Allowance amounts are fixed and no entry of data is required by the Bidder. Include each and every Allowance amount in the Base Bid. The Bidder's Fee (overhead and profit) and costs for unloading and handling on the Site, labor, installation costs, and other expenses contemplated for the Allowance must be included in the Base Bid and NOT in the Allowance amount.</p>

▣ Allowances (General Contract)			
Item	Description	Allowance Amount*	Extension
Allowance A-1	Village of Ottawa	\$46,500.00	\$46,500.00

Allowance A-2	Dominion/Enbridge Energy	\$62,796.35	\$62,796.35
Allowance A-3	Ohio Power	\$25,089.03	\$25,089.03
Allowance A-4	NWOSS	\$7,280.80	\$7,280.80
4 Items		Total:	

Unit Price Instructions

Enter the price per unit of measure in the Bid Form and the extension will be automatically calculate. Include the Extension for each and every Unit Price in the Base Bid. Unit prices will be used solely for the purpose of determining the adjustment to the Contract Sum for differences between the estimated quantities on the electronic Bid Form and the actual quantities provided.

Unit Prices (General Contract)

Item	Description	Quantity	Unit Price*	Unit of Measure	Extension
Unit Price U-1	Undercut of Poor Soils	500	_____	Cubic Yards	
Unit Price U-2	Engineered Compacted Backfill	500	_____	Cubic Yards	
Unit Price U-3	Rock Removal	100	_____	Cubic Yard	
Unit Price U-4	Lean Concrete	100	_____	Cubic Yard	
4 Items		Total:			

Base Bid Instructions

Enter the amount of the Base Bid for ALL LABOR AND MATERIALS to complete the scope of Work. Include the amount of each Allowance (if applicable) and the subtotal of each Unit Price Extension (if applicable) in the Base Bid amount. Failure to include Allowance or Unit Price Extensions in the Base Bid is the responsibility of the Bidder and will not be sufficient reason for adjustment of the Bid amount after the Bid deadline. Do not include Alternates (if applicable) in the Base Bid amount.

Base Bid (General Contract)

Item	Description	Base Bid Amount*	Extension
Base Bid	All Labor and Materials (include Allowances and Unit Price Extensions above)	_____	
1 Item		Total:	

Alternate Instructions

Enter the amount of each and every Alternate to ADD TO or DEDUCT FROM the Base Bid. Indicate amounts to DEDUCT FROM the Base Bid by entering a minus sign (-) before the amount entered. Do not include Alternate amounts in the Base Bid.

Alternates (General Contract)

Item	Description	Alternate Amount*	Extension
------	-------------	-------------------	-----------

! Alternates are not included in bid total.		
Alternate 1	Additional Fencing	_____
Alternate 2	Brick Veneer Wainscotting at Office	_____
Alternate 3	Additional Mobile Column Lifts	_____
Alternate 4	Laydown Area Gravel	_____
4 Items	Alternate Total:	Total:

■ Bidder Affirmation and Disclosure

The Bidder acknowledges that by submitting its Bid, the Bidder has read and understands the applicable Executive Orders regarding the prohibitions of performance of offshore services, locating State data offshore in any way, or purchasing from Russian institutions or companies. If awarded a Contract, the Bidder will become the Contractor and affirms that both the Contractor and its Subcontractors shall perform no services requested under this Contract outside of the United States.

The Bidder shall provide the locations where services under this Contract will be performed in the spaces provided below or by attachment. Failure to provide this information as part of its Bid may cause the Bidder to be deemed non-responsive and no further consideration will be given to its Bid. If the Bidder will not be using Subcontractors, indicate "Not Applicable" in the appropriate spaces.

1. Principal business location of Contractor:

Contractor Address*	City, State, and Zip*
<input type="text"/>	<input type="text"/>

Name / Principal business location of Subcontractor(s), if known at time of Bid deadline:

Subcontractor Name*	Address, City, State, and Zip*
<input type="text"/>	<input type="text"/>

2. Location(s) where services will be performed by Contractor (Project Sites):

Name*	Address, City, State, and Zip*
<input type="text"/>	<input type="text"/>

Name(s) / Location(s) where services will be performed by Subcontractors (Project Sites):

Subcontractor Name	Address, City, State, and Zip
<input type="text"/>	<input type="text"/>

3. Location(s) where State data will be located by Contractor:

Address*	City, State, and Zip*
<input type="text"/>	<input type="text"/>

Location(s) where State data will be located by Subcontractor(s), if known at time of Bid deadline:

Subcontractor Name	Address, City, State, and Zip
<input type="text"/>	<input type="text"/>

Bidder also affirms, understands and agrees that the Contractor and its Subcontractors are under a duty to disclose to the State any change or shift in location of services performed by the Contractor or its Subcontractors before, during and after execution of any Contract with the State. Bidder agrees it shall so notify the State immediately of any such change or shift in location of its services. The State has the right to immediately terminate the contract, unless a duly signed waiver from the State has been attained by the Contractor to perform the services outside the United States.

On behalf of the Bidder, I acknowledge that I am duly authorized to execute this electronic Bid Form including this Bidder Affirmation and Disclosure form and have read and understand that this form is a part of any Contract that Bidder may enter into with the State and is incorporated therein.

EDGE Program Commitment to Participate

Option A

The Bidder commits to meet or exceed the advertised EDGE Participation Goal of the Contract award amount, calculated as a portion of the Base Bid plus all accepted Alternates, by using EDGE-certified Business(es).

The Bidder agrees that if selected for consideration of the Contract, it shall provide (if not provided with the Bidder's Bid) to the Contracting Authority, at the location required and within 3 business days after receiving notice from the Contracting Authority, its fully completed Bidder's Qualification Form, including an EDGE Affidavit form for each EDGE-certified Business proposed for use by the Bidder if awarded the Contract for this Project.

Option B (indicate percentage of participation below)

The Bidder declares that it does not meet the advertised EDGE Participation Goal percentage, but, if awarded the Contract for this Project, commits to provide the percentage of the Contract award amount, indicated above, calculated as a portion of the Base Bid plus all accepted Alternates, by using EDGE-certified Business(es).

The Bidder acknowledges it understands the requirement for it to provide and agrees to provide to the Contracting Authority, if selected for consideration of the Contract, within 3 business days after notice from the Contracting Authority, a detailed Demonstration of Good Faith form describing its efforts undertaken prior to submitting its Bid to meet the advertised EDGE Participation Goal percentage for the Contract for this Project.

The Bidder commits to provide to the Contracting Authority at the location required, and within 3 days after receiving notice from the Contracting Authority, its fully completed Bidder's Qualifications Form, including an EDGE Affidavit form for each EDGE-certified Business proposed for use by the Bidder if awarded the Contract for this Project.

Option C

The Bidder declares that the Bidder is an EDGE-certified Business and that if awarded this Contract, the EDGE Participation percentage will be 100 percent of the Contract award amount.

Select EDGE option above*

Choices...

If option B selected, enter percentage

Certifications (State Prevailing Wages)

1. The Bidder has read and understands the proposed Contract Documents and agrees to comply with all requirements of the proposed Contract Documents, regardless of whether the Bidder has actual knowledge of the requirements and regardless of any statement or omission made by the Bidder, which might indicate a contrary intention.
2. The Bidder represents that the Bid is based upon the Basis of Design and Acceptable Components specified by the proposed Contract Documents.
3. The Bidder has visited the Site, become familiar with local conditions, and has correlated personal observations about the requirements of the proposed Contract Documents. The Bidder has no outstanding questions regarding the interpretation or clarification of the proposed Contract Documents.

4. The Bidder understands that the execution of the Project will require sequential, coordinated, and interrelated operations, which may involve interference, disruption, hindrance, or delay in the progress of the Bidder's Work. The Bidder agrees that the Contract Sum, as amended from time to time, shall cover all amounts due from the State resulting from interference, disruption, hindrance, or delay that is not caused by the State or its agents and employees. The Bidder agrees that any such interference, disruption, hindrance, or delay is within the contemplation of the Bidder and the State and that the Contractor's sole remedy from the State for any such interference, disruption, hindrance, or delay shall be an extension of time in accordance with the proposed Contract Documents.
5. During the performance of the Contract, the Bidder agrees to comply with Ohio Administrative Code ("OAC") Chapters 123:2-3 through 123:2-9 and agrees to incorporate the monthly reporting provisions of OAC Section 123:2-9-01 into all subcontracts on the Project, regardless of tier. The Bidder understands the State's Equal Opportunity Coordinator or the Contracting Authority may conduct pre-award and post-award compliance reviews to determine if the Bidder maintains nondiscriminatory employment practices, maintains an affirmative action program, and is exerting good faith efforts to accomplish the goals of the affirmative action program. For a full statement of the rules regarding Equal Employment Opportunity in the Construction Industry, see OAC Chapters 123:2-1 through 123:2-9.
6. The Bidder and each Person submitting a Bid on behalf of the Bidder certifies, and in the case of a Bid by a joint venture each member thereof certifies as to such member's entity, under penalty of perjury, that to the best of the undersigned's knowledge and belief: (a) the Base Bid, any Unit Prices, and any Alternate bid in the Bid have been arrived at independently without collusion, consultation, communication or agreement, for the purpose of restricting competition as to any matter relating to such Base Bid, Unit Prices or Alternate bid with any other Bidder; (b) unless otherwise required by law, the Base Bid, any Unit Prices and any Alternate bid in the Bid have not been knowingly disclosed by the Bidder and shall not knowingly be disclosed by the Bidder prior to the bid opening, directly or indirectly, to any other Bidder who would have any interest in the Base Bid, Unit Prices, or Alternate bid; (c) no attempt has been made or shall be made by the Bidder to induce any other Person to submit or not to submit a Bid for the purpose of restricting competition.
7. The Bidder shall execute the Agreement with the Contracting Authority, if a Contract is awarded on the basis of this Bid, and if the Bidder does not execute the Agreement for any reason, other than as authorized by law, the Bidder and the Bidder's Surety are liable to the State as provided in Article 5 of the Instructions to Bidders.
8. The Bidder certifies that the upon the award of a Contract, as the Contractor it shall make a good faith effort to ensure that all of the Contractor's employees, while working on the Site, shall not purchase, transfer, use, or possess illegal drugs or alcohol or abuse prescription drugs in any way.
9. The Bidder acknowledges that it read all of the Instructions to Bidders, and in particular, Section 2.10 - Submittals With Bid Form, and by submitting its Bid certifies that it has read the Instructions to Bidders and it understands and agrees to the terms and conditions stated in them.
10. The Bidder agrees to furnish any information requested by the Contracting Authority or the Architect/Engineer to evaluate the responsibility of the Bidder.
11. The Bidder agrees to furnish the submittals required by Section 6.1 of the Instructions to Bidders for execution of the Agreement within 10 days of the date of the Notice of Intent to Award.
12. When the Bidder is a corporation, partnership or sole proprietorship, an officer, partner or principal of the Bidder, as applicable, shall enter the legal name of the Bidder and the name of the officer, partner or principal of the Bidder (in lieu of signing the Bid Form) in the data fields provided.
13. When the Bidder is a joint venture, an officer, partner or principal, as applicable, of each member of the joint venture shall enter the legal name of the applicable member and the name of the officer, partner or principal (in lieu of signing the Bid Form) in the data fields provided.
14. The Bidder understands that the Contract is subject to all the provisions, duties, obligations, remedies and penalties of Ohio Revised Code Chapter 4115 and that the Bidder shall pay any wage increase in the locality during the term of the Contract.
15. The Bidder represents that the individual that is submitting and digitally signing the electronic Bid is legally authorized to do so.
16. Bidder acknowledges that by the act of submitting an electronic Bid that it is digitally signing the actual Bid, which shall serve as the Bidder's authorization for the further consideration and activity in the bidding and contract process.



The Bidder hereby acknowledges that the above representations in this Bid are material and not mere recitals.*

■ Procurement Forms

Document 00 43 13 - Bid Security Form
→ Upload below and provide original document within 3 days

Document 00 45 13 - Bidder's Qualifications
→ Upload below or provide within 3 days of request

Document 00 45 39 - EDGE Affidavit
 → Upload below or provide within 3 days of request

3 Attachments

■ Instructions for Providing Bid Submittals

Submission of Electronic Facsimile of Bid Guaranty with Electronic Bid

The Bidder SHALL UPLOAD and ATTACH TO ITS BID an ELECTRONIC FACSIMILE (scanned PDF document) OF ITS BID GUARANTY, payable to the Contracting Authority, in the form of either: (1) the signed and sealed Document 00 43 13 - "Bid Security Form" contained in the Contract Documents (and provided for the Bidder's convenience in the block above) for the amount of the Base Bid plus all additive Alternates; or (2) a certified check, cashier's check, or letter of credit, for 10 percent of the Base Bid, plus all additive Alternates – a letter of credit shall expressly provide that it is revocable only by the Contracting Authority. Refer to Sections 2.10.1.1 and 5.1 of Document 00 21 13 - "Instructions to Bidders."

Submission of Original Bid Guaranty

In addition to the Electronic Facsimile above, the Bidder SHALL DELIVER ITS ORIGINAL UNALTERED BID GUARANTY to the Project Coordinator at the address identified below WITHIN 3 BUSINESS DAYS AFTER THE BID DEADLINE as provided in Ohio Administrative Code Section 153:1-8-01(H). THIS REQUIREMENT APPLIES TO ALL BIDDERS. Refer to Section 2.10.1.2 of the Instructions to Bidders.

Kaitlyn Gardner
 Project Coordinator
 Ohio Department of Transportation
 1980 West Broad Street
 Columbus, Ohio 43223

Non-responsive Bid for Failure to Submit Bid Guaranty

Each Bidder MUST SUBMIT BOTH THE ELECTRONIC FACSIMILE AND THE ORIGINAL UNALTERED BID GUARANTY as described above. The Contracting Authority SHALL REJECT A BID AS NON-RESPONSIVE if the Bidder fails to submit BOTH elements of the Bid Guaranty. The checkboxes below are to identify that you have uploaded the other form of Bid Guaranty. DO NOT CHECK ALL BOXES. Refer to Section 2.10.1 of the Instructions to Bidders.

Submission of Bidder's Qualifications and EDGE Affidavit

The Bidder is encouraged to submit background information with its Bid using Document 00 45 13 - "Bidder's Qualifications" and Document 00 45 39 - "EDGE Affidavit" with the EDGE-certified Business(es) the Bidder proposes to use on the Project (forms provided for the Bidder's convenience in the block above). If the Bidder does not submit the Bidder's Qualifications form and/or the EDGE Affidavit form and related information attached to the electronic Bid Form, the Bidder shall provide it within 3 days of request. Refer to Sections 2.10.3 and 3.5.4 of the Instructions to Bidders.

■ Required Bid Guaranty Upload

Name	File*
Document 00 43 13 - Bid Security Form → Upload a scan of the fully executed Bid Security Form AND submit the original document to the Contracting Authority within 3 days of the bid deadline	<input type="button" value="Select file..."/> no file selected <input type="checkbox"/> I am NOT enclosing this document because the <u>omission terms</u> have been met. (Bidder submitted a Cashier's check below)
Power of Attorney → Upload a scan of the fully executed Power of Attorney AND submit the original document to the Contracting Authority within 3 days of the bid deadline	<input type="button" value="Select file..."/> no file selected <input type="checkbox"/> I am NOT enclosing this document because the <u>omission terms</u> have been met. (Bidder submitted a Cashier's check below OR included with the Bid Security Form above)
Cashier's Check for 10% of the Bid → Upload a scan of the Cashier's Check AND submit the original check to the Contracting Authority within 3 days of the bid deadline	<input type="button" value="Select file..."/> no file selected <input type="checkbox"/> I am NOT enclosing this document because the <u>omission terms</u> have been met. (Bidder submitted the Bid Security Form AND Power of Attorney above)

3 Required Documents

■ Bidder's Qualifications and EDGE Affidavit Upload

Name	File*
Document 00 45 13 - Bidder's Qualifications → Upload fully completed form and attachments	<input type="button" value="Select file..."/> no file selected <input type="checkbox"/> I am NOT enclosing this document because the <u>omission terms</u> have been met. (Must be submitted to the Contracting Authority within 3 days of request)
Document 00 45 39 - EDGE Affidavit → Upload a completed form for each EDGE business	<input type="button" value="Select file..."/> no file selected <input type="checkbox"/> I am NOT enclosing this document because the <u>omission terms</u> have been met. (Must be submitted to the Contracting Authority within 3 days of request)

2 Required Documents

■ Bidder Signatory Information

Bidder Signatory

Name of Bidder's Authorized Signatory:*

Title of Authorized Signatory:*

All Bidders complete all information in this form. Duplicate and complete the block below for each Joint Venturer:

Bidder Information

Business Name:*

Business Mailing Address, City, State, Zip:*

Telephone Number:*

Facsimile Number:

Email Address:*

Federal Tax ID Number:*

State of Incorporation (if applicable):

Contact person for Contract processing:*

Date enrolled in an OBWC-approved DFSP (month/date/year):

President or Chief Executive Officer's Name:*

President or Chief Executive Officer's Title:*

END OF DOCUMENT

SECTION 07 61 00

METAL ROOF AND WALL ACCESSORIES

1. PART 1 - GENERAL

1.1 SCOPE

- A. **This section only applies if materials cannot be obtained from the Metal Building Systems manufacturer for non-Metal Building Systems structures.**
- B. The work under this Section includes, but is not limited to the following: All miscellaneous items required to complete the intent of this specification is the responsibility of this contractor, whether same is specified herein, or shown on the drawings.
 - 1) Metal roofing and wall panel system complete with gutters, snow guards, downspout conductors, trim, etc.
 - 2) Such other items as may be required to complete the roofing and wall panel systems.
 - 3) All connection bolts, fasteners, closures, sealer and other items as may be required.
 - 4) All required flashings
 - 5) All fascia trim at rake, eave, etc. of metal roof.
 - 6) All seals to make roofing and wall systems water tight.
 - 7) Interior metal wall & ceiling liner panels.
 - 8) Soffit metal panels.
 - 9) All flashing for mechanical, plumbing and/or electrical penetrations.
 - 10) **NOTE: Metal roof, wall, liner, and soffit panel systems along with all accessories, trim, fascia, downspouts, gutters, etc. shall be obtained from the same manufacturer for each system for all project buildings which use these systems as much as possible – see also Metal Building Systems-Section 13 34 19. Profiles and colors are to match what is provided for Metal Building Systems.**

1.2 RELATED WORK

- A. Sheet Metal Flashing & Trim – Section 07 62 00
- B. Joint Sealants – Section 07 92 00
- C. Pre-Engineered Structures – Section 13 34 19

1.3 SUBMITTALS

- A. Provide shop drawings showing locations and sizes of all load transfer members to roof structure and roof panel clip locations. Include engineering data, i.e. moment of inertia, section modulus, yield strength of steel, etc.
 - B. Samples
 - 1) Submit samples and color chips for all proposed finishes
- 1.4 INTACT
- A. This is a performance specification. Contractor is responsible for the final design, which must be in conformance with the OBC and all design limitations noted on drawings and addressed in specifications. The Architect shall have final authority in the interpretation of specifications and drawings for determination of compliance.
 - B. The drawings indicate where all main roof structure members are located.
- 1.5 APPROVED MANUFACTURERS
- A. Panels meeting this design supplied by United Structures of America, Inc., American Building Systems, Butler Building Systems, Dimensional Metals Inc, Architectural Metal Systems, Inc., Metal Sales Manufacturing, Ultra Seam, Metal systems, Inc., McElroy Metal and Wall Systems are acceptable.
- 1.6 SYSTEM DESIGN
- A. The roof system shall carry a U.L. wind uplift classification Class 90 rating to ensure structural integrity and possible reduction of insurance rates.
 - B. All components of the roof paneling system shall be designed in accordance with sound engineering methods and practices.
 - C. Roof panels shall be designed in accordance with AISI "Specifications for the Design of Light Gauge Cold Formed Steel structural Members," latest edition.
 - D. Roof panel system shall be designed to support specified design live loads (See structural drawings).
 - E. All endwall trim and roof transition flashings shall allow the roof panel to move relative to the wall panels as the roof expands and contracts with temperature changes.
- 1.7 WARRANTY
- A. Upon completion of the project, the Manufacturer shall issue to the Owner a 20 year Written Warranty to replace any defective materials, for a period of 20 years. The manufacturer shall also issue to the Owner a 20-year written warranty covering paint finish against cracking, checking, blistering, peeling, flaking, chipping, chalking and fading. Roof panels produced with carbon coating produced with Kynar 500 or Hylar 5000 resin.

2. PART 2 - PRODUCT

~~2.1 ROOF STRUCTURE~~

- ~~A. If additional roof structure is required to meet the governing codes, these are the responsibility of this Contractor.~~

~~2.2 ROOFING SYSTEM~~

- ~~A. Details and installation shall be in accordance with the manufacturer's drawings for installation over the type of substructure/deck as shown on drawings.~~
- ~~B. Color to be selected by Architect.~~

2.3 METAL ROOF PANELS

- A. See spec 07 41 13 Insulated Metal Roof Panels
- ~~B. Roof Panel Description—Roll formed panels. Two-inch deep interlocking male and female ribs spaced 16" O.C. and mechanically seamed.~~
- ~~C. Panel materials shall be: 24-gauge galvalume sheet steel. Base metal is steel tested to meet or exceed a minimum yield of 50,000 psi. coated by the continuous hot-dip method uniformly on both sides with an aluminum zinc alloy. Minimum weight of coating, by tripe-spot test, is 0.55 oz determined in accordance with ASTM A792. Paint shall be 70% Duranar/Kynar 500.~~
- ~~D. Panel shall be factory prepunched at panel end to match prepunched holes in the eave structural member. Panel and connections to roof structure shall allow the roof panels to expand and contract.~~
- ~~E. Ridge assembly shall be designed to allow roof panels to move lengthwise with expansion/contraction as the roof panel temperature changes. Parts shall be factory prepunched for correct field assembly.~~
- ~~F. Panel clips shall be the manufacturer's standard for installation over wood deck, rigid insulation, metal deck, or steel purlins. Fasteners to extend down into sub structure per manufacturers requirements.~~
- ~~G. Provide 30# felt underlayment and moisture barrier/slip sheet as approved/required by metal roofing manufacturer between deck sheathing / rigid insulation and metal roofing panels.~~
- ~~H. Provide continuous self-adhesive ice & water barrier membrane (min. 36" wide roll) at all roof eave, rake and ridge locations where roofing is installed over a wood deck.~~
- ~~I. Colors to be selected by Architect.~~

2.4 GUTTERS, FLASHING & DOWNSPOUTS

- A. Gutters, flashing & downspouts shall be fabricated from 24 gauge galvanized steel, ASTM Specifications A525, G90 coating latest issue.
- B. Gutters, flashing and downspouts shall have a factory finished paint application. Paint shall be 70% Fluor/Kynar of manufacturer's standard colors. Gutters shall be supported by painted galvanized steel hangers from roof panels. Support shall be at every other standing seam (maximum).
- C. Provide gutter expansion joints spaced not more than 40'-0" O.C. cap each end of gutter and leave gap between gutter ends at each expansion joint location. Provide metal cover over expansion joint to hide expansion joint gap. 40'-0" length of gutter to be seamless. Seal all joints between gutter and end caps.
- D. Downspout conductors shall be 4" x 5" and securely anchored to the wall with anchors at 4'-0" O.C.
- E. Gutters to be "box" style. See drawings for size.
- F. Colors to be selected by Architect (color to match roof color).

2.5 METAL WALL PANELS

- A. See spec 07 42 13 Insulated Metal Wall Panels
- ~~B. Wall panel description — Factory-formed tapered-rib-profile (PBR) metal wall panels lapped with exposed fasteners. Include all accessories required for weather tight installation. All flashing and trim to be 24-gauge.~~
- ~~C. Panel materials shall be: 24-gauge galvalume sheet steel. Base metal is steel tested to meet or exceed a minimum yield of 50,000 psi. Coated by the continuous hot-dip method uniformly on both sides with an aluminum-zinc alloy. Minimum weight of coating, by tripe-spot test, is 0.55-oz determined in accordance with ASTM A792. Paint shall be 70% Duranar/Kynar 500.~~
- ~~D. All wall panels shall be continuous from sill to roofline.~~
- ~~E. Z-Shaped Furring: With slotted or nonslotted web, face flange of 1-1/4 inches (32 mm), wall attachment flange of 7/8 inch (22 mm), and depth required to fit insulation thickness indicated.
 - ~~1) Nominal Thickness: 16 gauge.~~~~
- ~~F. Manufacturer: Obtain wall panels from manufacturer supplying metal roof system. Install per manufacturer's instructions.~~

2.6 METAL SOFFIT PANELS

- A. Provide perforated (vented) panels and solid panel formed with vertical panel edges and intermediate stiffening ribs and flush joint between panels. (1½" x 12" panels)

- B. Material: 24-gauge galvalume sheet steel, minimum yield of 50,000 psi.
- C. Color to be selected by Architect.
- D. Manufacturer: Obtain soffit panels from manufacturer supplying metal roof system. Install per manufacturer's instructions.

2.7 LINER PANEL

- A. Provide 24 gauge liner panel on interior walls where noted on drawings. Panel shall have factory white finish and include end closures and trim at corners, columns, door openings, etc.

2.8 SNOW GUARDS

- A. Furnish and install continuous snow guards on roof at 2'-0" up slope from gutter locations and at 2'-0" up slope of plumbing/mechanical roof penetrations. Provide snoclips or ice flags above all overhead door and man door locations. See drawings for locations of snow guards.
- B. Provide non-roof penetrating snow guards as manufactured by one of the following or approved equal for all standing seam metal roofs.
 - 1) Alpine Snow Guards - Snow Fence
 - 2) LM Curbs - S-5 Sno Fence
 - 3) S-5! Sno Fence
 - 4) Berger Bros. Co. - F-Rail
 - 5) Snow Management Systems - 2 Pipe
- C. Snow guards shall be stainless steel.

2.9 SYSTEM DESIGN

- A. All components of the roof paneling system shall be designed in accordance with sound engineering methods and practices.
- B. Roof panels shall be designed in accordance with AISI "Specifications for the Design of Light Gauge Cold Formed Steel Structural Members," latest edition.
- C. Roof paneling system shall be designed to support specified design live loads.
- D. All endwall trim and roof transition flashings shall allow the roof panel to move relative to the wall panels as the roof expands and contracts with temperature changes.
- E. Safety equipment, as required by safety standards, shall be provided by the erecting contractor to provide worker safety during panel installation.

3. PART 3 - INSTALLATION

3.1 GENERAL

- A. Erect all components in the sequence recommended by the manufacturer.
- B. All structural members shall be erected plumb & level, braced and anchored in accordance with approved erection drawing.

3.2 PANEL INSTALLATION

- A. Erect roof, wall, soffit, and liner panels in accordance with the manufacturer's instructions.

3.3 FASTENERS

- A. Roof panel clips shall be fastened to structural members as per manufacturer's erection drawings.
- B. All connections of panels to structural members, except at eave, shall be made with clips with movable tabs that are seamed into the standing seam sidelaps.
- C. Roof and wall panel fasteners shall be per manufacturer's requirements. Type of fastener per type of structure being fastened to.

3.4 ACCESSORIES

- A. All accessories shall be as standard with the Roof Panel Manufacturer, unless otherwise noted and furnished as specified. Location of standard accessories shall be as shown on erection drawings, as furnished by roof Manufacturing Company.

◆ END OF SECTION ◆

SECTION 10 44 00
FIRE PROTECTION SPECIALTIES

1. PART 1 - GENERAL

1.1 WORK INCLUDED

- A. Fire Extinguishers
- B. Cabinets
- C. Accessories

1.2 REFERENCES

- A. Latest edition of NFPA 10 Portable Fire Extinguishers and Ohio Fire Code.
- B. ICC A117.1 (Latest Edition) Accessibility Guidelines

1.3 QUALITY ASSURANCE

- A. Conform to latest edition of NFPA 10, Ohio Fire Code, and Ohio Building Code requirements for portable fire extinguishers.
- B. Provide fire extinguishers, cabinets, and accessories by single manufacturer.

1.4 SUBMITTALS

- A. Submit brochure and project data for approval by the Architect.
- B. Submit location of manufacture of miscellaneous specialties.
- C. Submit certification that fire extinguishers are halon-free.

2. PART 2 - PRODUCTS

2.1 ACCEPTABLE MANUFACTURERS

- A. Where shown on the drawings, provide fire extinguishers, cabinets, and accessories manufactured by Larsen's.
- B. Equal by Buckeye Fire Equipment and J. L. Industries are also approved.

2.2 FIRE EXTINGUISHERS

- A. Dry chemical type: Larsen's model MP6, UL Classification 3A-40B:C or model MP10, UL classification 4A-80B:C. Approved equal by Buckeye and J.L. Industries

2.3 FIRE EXTINGUISHER CABINETS

- A. Where indicated on schedule, provide Larsen's semi-recessed cabinet model No. 2409-6R with vertical duo door with tempered glass. Door and trim to be fabricated from cold-rolled steel.

- B. Provide one (1) weather-proof cabinet by Cato, First Strike, Brooks, or approved equal and mount to Fuel Island bollard.

2.4 ACCESSORIES

- A. Extinguisher Wall Brackets
- B. Provide brackets as scheduled.

2.5 AED CABINET WITH STEEL TRIM AND DOOR:

- A. 1400 Lifestart™ Series, J.L. Industries Model 1417F12
- B. Cabinet Style: Semi-recessed
- C. Components:
 - 1) Tub: Cold-rolled steel.
 - a) Finish: Factory-applied powder coat paint finish
 - b) Standard Color: White.
 - 2) Door and Trim Construction: Cold-rolled steel; flush doors with 5/8 inch (15.88 mm) door stop attached by continuous hinge and equipped with zinc-plated with roller catch.
 - a) Finish: Factory-applied powder coat paint finish.
 - b) Standard Color: White.
 - c) Door Style:
 - [1] Style F12: Full Acrylic Glazing; Pull & AED Graphics
 - 3) Trim Style and Depth:
 - a) Semi-Recessed Cabinet:
 - [1] Square Edge: 1-1/2 inch (38.10 mm).
 - [2] Rolled Edge: 3 inch (76.20 mm).

2.6 SCHEDULE -

Room	Fire Extinguisher	Quantity	Cabinet/Bracket
101	MP6	1	Semi-Recessed Cabinet
106	MP6	1	Semi-Recessed Cabinet
109	MP10	1	#846
118	MP10	6	#846
119	MP10	1	#846
120	MP10	2	#846
121	MP10	1	#846
127	MP10	1	#846

200	MP10	4	#846
500	MP10	1	#846
Fuel Island	MP10	1	Weather-Proof Cabinet

Room	Defibrillator	Quantity	Cabinet/Bracket
101	By Owner	1	Semi-Recessed Cabinet

2.7 IDENTIFICATION SIGNAGE

- A. Provide manufactured identifying signage above each fire extinguisher location. Signs to be minimum 2-way projecting signs with “Fire Extinguisher” lettering in “red” on “white” background. Size of sign and lettering and location to be per the requirements of authorities having jurisdiction.
- B. Provide manufactured identifying signage above each AED cabinet location. Signs to be minimum 2-way projecting signs with “AED” lettering in “red” on “white” background. Size of sign and lettering and location to be per the requirements of authorities having jurisdiction.

3. PART 3 - EXECUTION

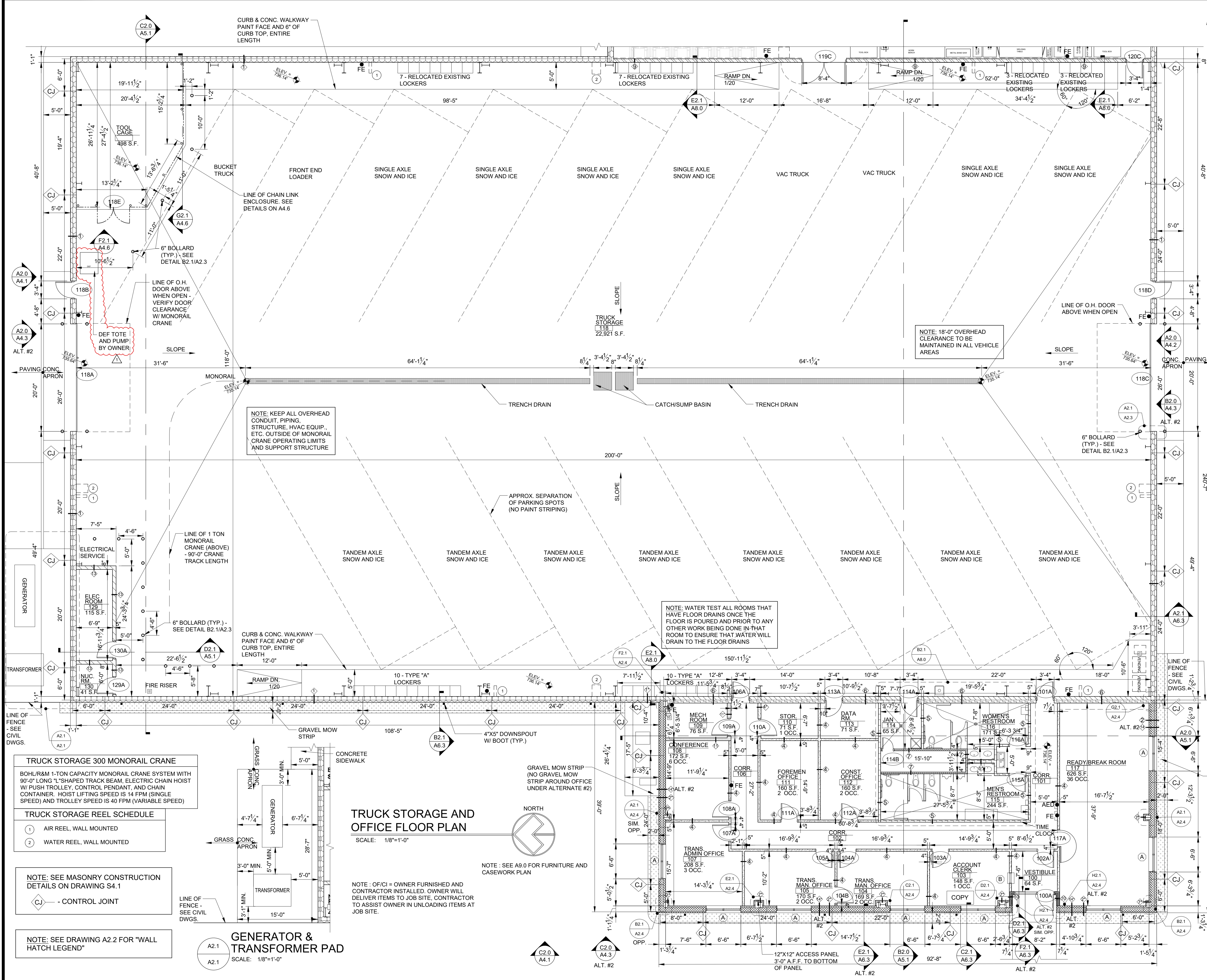
3.1 INSPECTION

- A. Verify that rough openings for cabinets are correctly sized and located.
- B. Verify servicing, charging and tagging of all fire extinguishers.

3.2 INSTALLATION

- A. Install the items of the section in strict accordance with the original design, approved shop drawings, and requirements of agencies having jurisdiction, as approved by the Architect, anchoring all components firmly into position.

◆ END OF SECTION ◆



GENERAL PROJECT NOTES

1. ALL DIMENSIONS ARE FROM FACE OF POURED CONCRETE, FACE OF BRICK, OR FACE OF DRYWALL UNLESS NOTED OTHERWISE.
2. PROVIDE ANY EXTRA MISC. STRUCTURE/BLOCKING AND FASTENERS NEEDED TO SUPPORT ALL FIXTURES, EQUIPMENT WALL AND CEILING PANELS, O.H. DOOR TRACK & OTHER EQUIPMENT, ETC. FROM THE BUILDING STRUCTURE.
3. CAULK THE TOP OF ALL FLOOR SLAB ISOLATION, EXPANSION, OR CONSTRUCTION JOINTS.
4. ALL WORK SHALL BE PERFORMED IN ACCORDANCE WITH STANDARDS OF BEST PRACTICE BY WORKERS SKILLED IN THEIR RESPECTIVE TRADES.
5. THESE DRAWINGS INDICATE THE GENERAL SCOPE OF THE PROJECT IN TERMS OF ARCHITECTURAL DESIGN CONCEPT, DIMENSIONS OF THE BUILDING, THE MAJOR ARCHITECTURAL ELEMENTS AND THE TYPE OF STRUCTURAL, MECHANICAL, ELECTRICAL SYSTEMS. THE CONTRACTOR SHALL FURNISH ALL ITEMS REQUIRED FOR THE PROPER EXECUTION AND COMPLETION OF THE WORK.
6. QUANTITIES ON THESE DRAWINGS ARE SHOWN FOR REFERENCE PURPOSES ONLY. CONTRACTOR TO FIELD VERIFY ALL QUANTITIES AND DIMENSIONS. ANY DISCREPANCIES ARE TO BE REPORTED TO THE ARCHITECT.
7. ALL FLOORS WITH FLOOR DRAINS - SLOPE ROOM FLOORS TO DRAINS (UNLESS NOTED OTHERWISE).
8. PRE-ENGINEERED STEEL BUILDING SHALL MEET THE REQUIRED R-VALUES NOTED ON DRAWING A2.0 AND PER OBC.
9. ALLOW FOR ROOF STRUCTURE DEFLECTION AT METAL STUD AND DRYWALL WALLS WHERE METAL STUD AND DRYWALL WALLS EXTEND UP TO OR ARE BRACED TO ROOF STRUCTURE.
10. ALL CONDUIT INSTALLATIONS, INCLUDING BUT NOT LIMITED TO UNDERGROUND, CONCEALED, OR EXPOSED TO BE COMPLETED AND INSTALLED IN A CLEAN MANNER, NO SPAGHETTI INSTALLATIONS. CONTRACTORS TO COORDINATE ALL INSTALLATION EFFORTS AS REQUIRED WITH OTHER TRADES AND CONTRACTORS. EXPOSED CONDUITS ARE TO BE MINIMIZED.
11. ALL DISCIPLINES MUST COORDINATE ANY PROPOSED MODIFICATIONS WITH THE ARCHITECT BEFORE COMPLETING THE WORK IN THE FIELD.
12. TYPICAL DRYWALL IS 5/8" TYPE "X" F.R., HOWEVER THERE IS MOISTURE RESISTANT DRYWALL AND HIGH IMPACT DRYWALL IN SELECT LOCATIONS. REFER TO ROOM FINISH SCHEDULE FOR THESE LOCATIONS AND MORE INFORMATION.
13. PROVIDE BLOCKING, BRACING, ETC. AS REQUIRED FOR THE PROPER INSTALLATION OF INTERIOR WALLS.
14. PROVIDE BLOCKING AS REQUIRED FOR THE PROPER INSTALLATION OF ALL TOILET PARTITIONS, MIRRORS, DISPENSERS, ETC.
15. PROVIDE DRYWALL CONTROL JOINTS AT A MAXIMUM SPACING OF 30'-0" IN ANY DIRECTION, AND AT ALL JAMB STUDS AT ALL OPENINGS AND AT ANY LOCATION WHERE IT MEETS A DISSIMILAR MATERIAL (TYP.) SEE DETAIL.
16. ALL CONTRACTORS TO VERIFY ALL DIMENSIONS AND CONDITIONS AT THE JOB SITE BEFORE WORK IS STARTED. INFORMATION ON THESE DRAWINGS ARE SHOWN FOR THE CONVENIENCE OF THE CONTRACTORS FOR BIDDING. THE CONTRACTOR SHALL BE RESPONSIBLE FOR PROPER NOTIFICATION OF ALL DISCREPANCIES. NOTIFY ARCHITECT OF ANY DISCREPANCIES.
17. DO NOT DISASSEMBLE THIS SET. COVER SHEET IS A MASTER INDEX. SYMBOLS AND OTHER ITEMS MAY BE INCLUDED ON ADDITIONAL SHEETS.
18. GENERAL CONTRACTOR TO PROVIDE DUMPSTER AND DISPOSE OF ALL WASTE ASSOCIATED WITH THIS PROJECT UNLESS NOTED OTHERWISE ON THESE DRAWINGS.
19. ALL NOTES ON ARCHITECTURAL DRAWINGS REFER TO NEW CONSTRUCTION OR MATERIALS. EXISTING MATERIALS AND CONSTRUCTION ARE SPECIFICALLY CALLED OUT AS EXISTING.
20. DO NOT SCALE OFF DRAWINGS FOR MATERIAL TAKE OFFS, ETC. USE ONLY DIMENSIONS SHOWN.
21. PROVIDE BULLNOSE CORNER BLOCKS @ ALL EXPOSED OUTSIDE CORNERS OF CONCRETE BLOCK UNLESS NOTED OTHERWISE - TYPICAL.
22. AT LOCATIONS WHERE ALUM. FLASHING OR TRIM IS TO BE OVER PRESSURE TREATED WOOD, USE ALUM. COMPATIBLE PRESSURE TREATED WOOD OR PROVIDE A PHYSICAL BREAK BETWEEN THE TWO MATERIALS WITH AN AIR AND MOISTURE BARRIER.



PUTNAM COUNTY FSM FACILITY
 FOR
OHIO DEPARTMENT OF TRANSPORTATION
 VILLAGE OF OTTAWA, OH

BUEHRER GROUP
 architecture & engineering, inc.
314 CONANT ST., MAUMEE, OH 43537 | P: 419.893.9021 | F: 419.893.9027 | BUEHRERGROUP.COM

REVISION SCHEDULE

02/21/2025

ISSUE DATE: 02/12/2025
 JOB NUMBER: 240652
 BID DOCUMENTS

A2.1

OFFICE / TRUCK STORAGE FLOOR PLAN

KEY PLAN
 SCALE: N.T.S.



PUTNAM COUNTY FSM FACILITY
FOR
OHIO DEPARTMENT OF
TRANSPORTATION
VILLAGE OF OTTAWA, OH

BUEHRER GROUP
architecture & engineering, inc.
314 CONANT ST., MAUMEE, OH 43537 | P: 419.893.9021 | F: 419.893.9027 | E: BUEHRER@BUEHRERGROUP.COM

REVISION SCHEDULE	
Δ	02/21/2025 - ADDENDUM #1

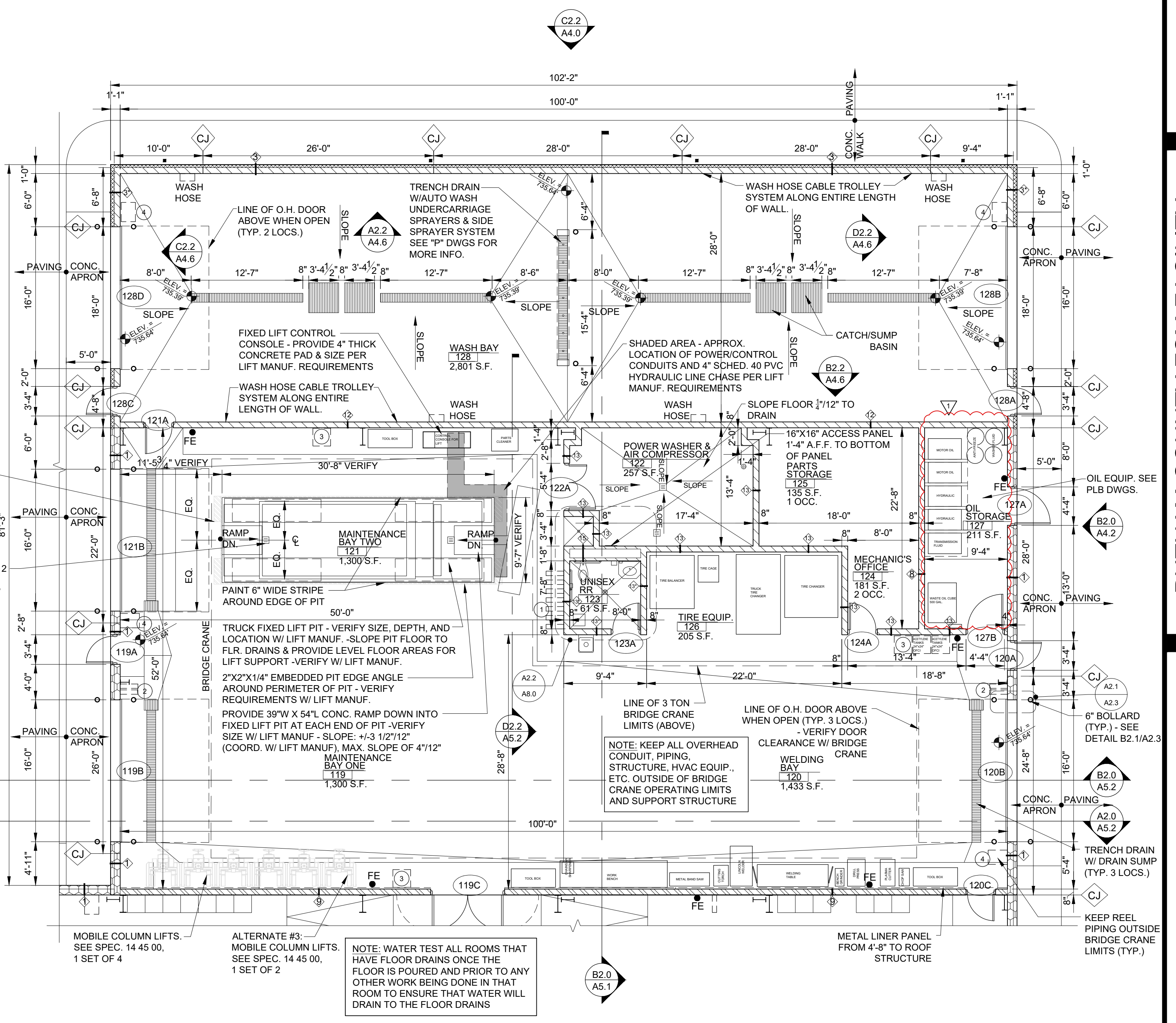
ISSUE DATE: 02/12/2025
JOB NUMBER: 240652
BID DOCUMENTS

A2.2
WASH BAY AND MAINTENANCE
BAY FLOOR PLAN

WALL HATCH LEGEND

WALL TYPE	DESCRIPTION	WALL TYPE	DESCRIPTION
NO METAL LINER PANELS	PRE-ENGINEERED EXTERIOR WALL SYSTEM MAINTENANCE AREA AND TRUCK STORAGE AREA: CONCRETE BLOCK TO 4'-8" A.F.F. WITH PRE-ENGINEERED GALVANIZED GIRT ABOVE. EXTERIOR INSULATED METAL PANELS WAINSCOT FROM FINISH FLOOR TO 3'-6" A.F.F. AND EXTERIOR INSULATED METAL PANELS FROM 3'-6" A.F.F. TO ROOF STRUCTURE ABOVE. (1" - INTERIOR METAL LINER PANEL FROM 4'-8" A.F.F. TO ROOF STRUCTURE ABOVE.)	CONCRETE BLOCK WALL FROM FINISH FLOOR TO 10'-0" A.F.F. WITH METAL STUDS @ 16" O.C. WITH 1/2" DRYWALL BOTH SIDES WITH 3/8" SOUND INSULATION FROM 10'-0" A.F.F. TO CEILING SYSTEM ABOVE (NOT TO ROOF DECK).	8" NOM. CONC. BLOCK
METAL LINER PANELS	PRE-ENGINEERED EXTERIOR WALL SYSTEM OFFICE AREA: EXTERIOR INSULATED METAL PANELS WAINSCOT FROM FINISH FLOOR TO 3'-0" A.F.F. AND EXTERIOR INSULATED METAL PANELS FROM 3'-0" A.F.F. TO ROOF STRUCTURE ABOVE SECURED TO PRE-ENGINEERED 10" (2" - 8") STEEL GIRTS. INTERIOR 3/8" METAL STUD WALL WITH 5/8" GYP BOARD ON INTERIOR FACE FROM FINISH FLOOR TO 6" ABOVE CEILING. SEE ROOM FINISH SCHEDULE FOR INTERIOR FINISH.	CONCRETE BLOCK WALL FROM FINISH FLOOR TO 4'-8" A.F.F. U.N.O. WITH PRE-ENGINEERED GALVANIZED GIRTS AND INTERIOR LINER PANEL ON BOTH SIDES FROM 4'-8" A.F.F. U.N.O. TO ROOF DECK ABOVE.	TRUCK STORAGE
10" STEEL GIRTS	INSULATED METAL PANELS 10" (2" - 8") STEEL GIRT 3/8" METAL STUDS @ 16" O.C. 5/8" GYP. DW.	PRE-ENGINEERED EXTERIOR WALL SYSTEM OFFICE AREA AT VESTIBULE: INSULATED METAL PANELS WAINSCOT FROM FINISH FLOOR TO 3'-0" A.F.F. AND EXTERIOR INSULATED METAL PANELS FROM 3'-0" A.F.F. TO ROOF STRUCTURE ABOVE SECURED TO 3/8" METAL STUD WALL WITH 5/8" GYP BOARD ON INTERIOR FACE FROM FINISH FLOOR TO 6" ABOVE CEILING. SEE ROOM FINISH SCHEDULE FOR INTERIOR FINISH.	INSULATED METAL PANELS 3/8" METAL STUDS @ 16" O.C. 5/8" GYP. DW.
8" STEEL GIRTS	WASH BAY AREA: EXTERIOR INSULATED METAL PANELS WAINSCOT FROM FINISH FLOOR TO 3'-6" A.F.F. AND EXTERIOR INSULATED METAL PANELS FROM 3'-6" A.F.F. TO ROOF STRUCTURE ABOVE ON 7/8" (3" - 2") GALV. METAL FURRING ON CONCRETE BLOCK FROM FINISH FLOOR TO ROOF DECK ABOVE.	3/8" METAL STUDS @ 16" O.C. WITH SOUND BATT INSULATION & (2) 1/2" DRYWALL BOTH SIDES (SEE "ROOM FINISH SCHEDULE" FOR DRYWALL TYPE). EXTEND ALL TO WALL CAP OR ROOF PURLINS ABOVE (EXTEND DRYWALL UP INTO ROOF BATT INSULATION). PROVIDE BRACING OF METAL STUD AND DRYWALL WALLS AS REQUIRED. NOMINAL WALL THICKNESS 5" OR 7". ACTUAL WALL THICKNESS 4 7/8" OR 7 1/4".	3/8" METAL STUDS 5/8" GYP. DW.
7/8" METAL FURRING	INSULATED METAL PANELS 7/8" (3" - 2") GALV. METAL FURRING 8" NOM. CONCRETE BLOCK	CONCRETE BLOCK WALL FROM FINISH FLOOR TO WASH BAY ROOF DECK ABOVE.	8" NOM. CONCRETE BLOCK
2" METAL FURRING	3/8" (4" - 6") METAL STUDS @ 16" O.C. W/ SOUND BATT INSULATION & 1/2" DRYWALL BOTH SIDES (SEE "ROOM FINISH SCHEDULE" FOR DRYWALL TYPE). EXTEND ALL TO WALL CAP OR ROOF PURLINS ABOVE (EXTEND DRYWALL UP INTO ROOF BATT INSULATION). PROVIDE BRACING OF METAL STUD AND DRYWALL WALLS AS REQUIRED. NOMINAL WALL THICKNESS 5" OR 7". ACTUAL WALL THICKNESS 4 7/8" OR 7 1/4".	CONCRETE BLOCK WALL (13" - WITH FRP PANELS ON UNISEX RR 123 SIDE ONLY) FROM FINISH FLOOR TO CEILING STRUCTURE ABOVE (NOT TO ROOF DECK).	8" NOM. CONCRETE BLOCK
3/8" METAL STUDS	3/8" GYP. DW. 3/8" METAL STUDS @ 16" O.C. BATT INSUL. 5/8" GYP. DW.	PRE-ENGINEERED EXTERIOR WALL SYSTEM OFFICE AREA (ALTERNATE #2): INSULATED METAL PANELS FROM 3'-0" A.F.F. TO ROOF STRUCTURE ABOVE SECURED TO 10" (14" - 8") PRE-ENGINEERED STEEL GIRTS. BRICK WAINSCOT WITH 2" RIGID INSULATION, 1/2" EXTERIOR GRADE PLYWOOD, AND 3/8" METAL STUDS @ 16" O.C. W/ 3/8" BATT INSULATION FROM FINISH FLOOR TO 3'-0" A.F.F.	13" - FRP PANELS ADHERED TO BLOCK
6" METAL STUDS	3/8" (5" - 6") METAL STUDS @ 16" O.C. BATT INSUL. 5/8" GYP. DW.	TRUCK STORAGE SIDE: CONCRETE BLOCK WALL FROM FINISH FLOOR TO 4'-8" A.F.F. U.N.O. WITH PRE-ENGINEERED GALVANIZED GIRTS AND INTERIOR LINER PANEL ON ONE SIDE FROM 4'-8" A.F.F. U.N.O. TO ROOF DECK ABOVE.	PRE-ENGINEERED EXTERIOR WALL SYSTEM OFFICE AREA (ALTERNATE #2): INSULATED METAL PANELS FROM 3'-0" A.F.F. TO ROOF STRUCTURE ABOVE SECURED TO 10" (14" - 8") PRE-ENGINEERED STEEL GIRTS. BRICK WAINSCOT WITH 2" RIGID INSULATION, 1/2" EXTERIOR GRADE PLYWOOD, AND 3/8" METAL STUDS @ 16" O.C. W/ 3/8" BATT INSULATION FROM FINISH FLOOR TO 3'-0" A.F.F.
3/8" METAL STUDS	3/8" GYP. DW. 3/8" METAL STUDS @ 16" O.C. BATT INSUL. 5/8" GYP. DW.	INSULATED METAL PANELS 1" AIR GAP 2" RIGID INSULATION AIR & MOISTURE BARRIER 5/8" PLYWOOD 3/8" METAL STUDS @ 16" O.C. BATT INSUL. VAPOR RETARDER 10" (14" - 8") STEEL GIRT 3/8" METAL STUDS @ 16" O.C. 5/8" GYP. DW.	BRICK 1" AIR GAP 2" RIGID INSULATION AIR & MOISTURE BARRIER 5/8" PLYWOOD 3/8" METAL STUDS @ 16" O.C. BATT INSUL. VAPOR RETARDER 10" (14" - 8") STEEL GIRT 3/8" METAL STUDS @ 16" O.C. 5/8" GYP. DW.
6" METAL STUDS	OFFICE SIDE: METAL STUDS @ 16" O.C. W/ SOUND BATT INSULATION & 1/2" DRYWALL ONE SIDE (SEE "ROOM FINISH SCHEDULE" FOR DRYWALL TYPE). EXTEND ALL TO ROOF PURLINS ABOVE (EXTEND DRYWALL UP INTO ROOF BATT INSULATION). PROVIDE BRACING OF METAL STUD AND DRYWALL WALLS EXTEND UP TO OR ARE BRACED TO ROOF STRUCTURE. PROVIDE 7" HIGH CONTINUOUS WATER SHIELD FLASHING BEHIND GYP BOARD, BOTH SIDES AND BELOW STUD TRACK.	PLUMBING CHASE: CONCRETE BLOCK WALL CHASE FROM FINISH FLOOR TO CEILING STRUCTURE ABOVE (NOT TO ROOF DECK). 4" NOM. CONCRETE BLOCK ON BOTH SIDES OF 12" AIR SPACE. FRP PANELS ON UNISEX RR 123 SIDE ONLY.	4" NOM. CONCRETE BLOCK AIR SPACE FRP PANELS ADHERED TO BLOCK
3/8" METAL STUDS	TRUCK STORAGE SIDE: CONCRETE BLOCK WALL FROM FINISH FLOOR TO 4'-8" A.F.F. U.N.O. WITH PRE-ENGINEERED GALVANIZED GIRTS AND INTERIOR LINER PANEL ON ONE SIDE FROM 4'-8" A.F.F. U.N.O. TO ROOF DECK ABOVE.		
2 1/2" METAL STUDS	7" - BATT INSUL. 3/8" (7" - 2 1/2") METAL STUDS @ 16" O.C. 5/8" GYP. DW.		
3/8" METAL STUDS W/ BATT INSUL.	3/8" (7" - 2 1/2") METAL STUDS @ 16" O.C. 5/8" GYP. DW.		

9'X34 1/2"X114" EMBEDDED STL CONTACT PLATES AT ALL 4 CORNERS - VERIFY REQUIREMENTS W/ LIFT MANUF.



NOTE: SEE DRAWING A2.1 FOR "GENERAL PROJECT NOTES"

NOTE: SEE MASONRY CONSTRUCTION DETAILS ON DRAWING S4.1

MAINTENANCE REEL SCHEDULE

- LUBE AND SERVICE REELS: ENGINE OIL (2), HYDRAULIC OIL (2), TRANSMISSION OIL (1), AIR (1), AND POWER (1) - WALL MOUNTED.
- SERVICE REELS: AIR AND POWER. WALL MOUNTED.
- EXHAUST REEL. WALL MOUNTED.
- WATER REEL. WALL MOUNTED

MAINTENANCE 119/120/121 BRIDGE CRANE

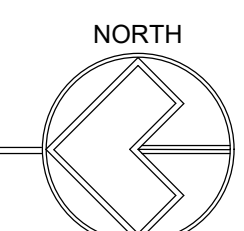
BOHUR&M 3-TON CAPACITY TOP RUNNING BRIDGE CRANE SYSTEM WITH 100 FPM VARIABLE BRIDGE SPEED, 8-BUTTON PUSH BUTTON CONTROLLER & WIRELESS CONTROLLER, UPPER & LOWER HOIST LIMIT SWITCHES, WEIGHT OVERLOAD HOIST LIMIT SWITCH, FUSED MANUAL AND MAGNETIC DISCONNECT, AND NEMA 3R CONTROL ENCLOSURES / FUSING / OVERLOAD PROTECTION FOR MOTORS. HOIST W/ TROLLEY 'SX' SERIES WIRE ROPE UNIT-H4 DUTY, HOIST LIFTING SPEED IS 19/3.2 FPM (TWO SPEED) AND TROLLEY SPEED IS 65 FPM (VARIABLE SPEED)

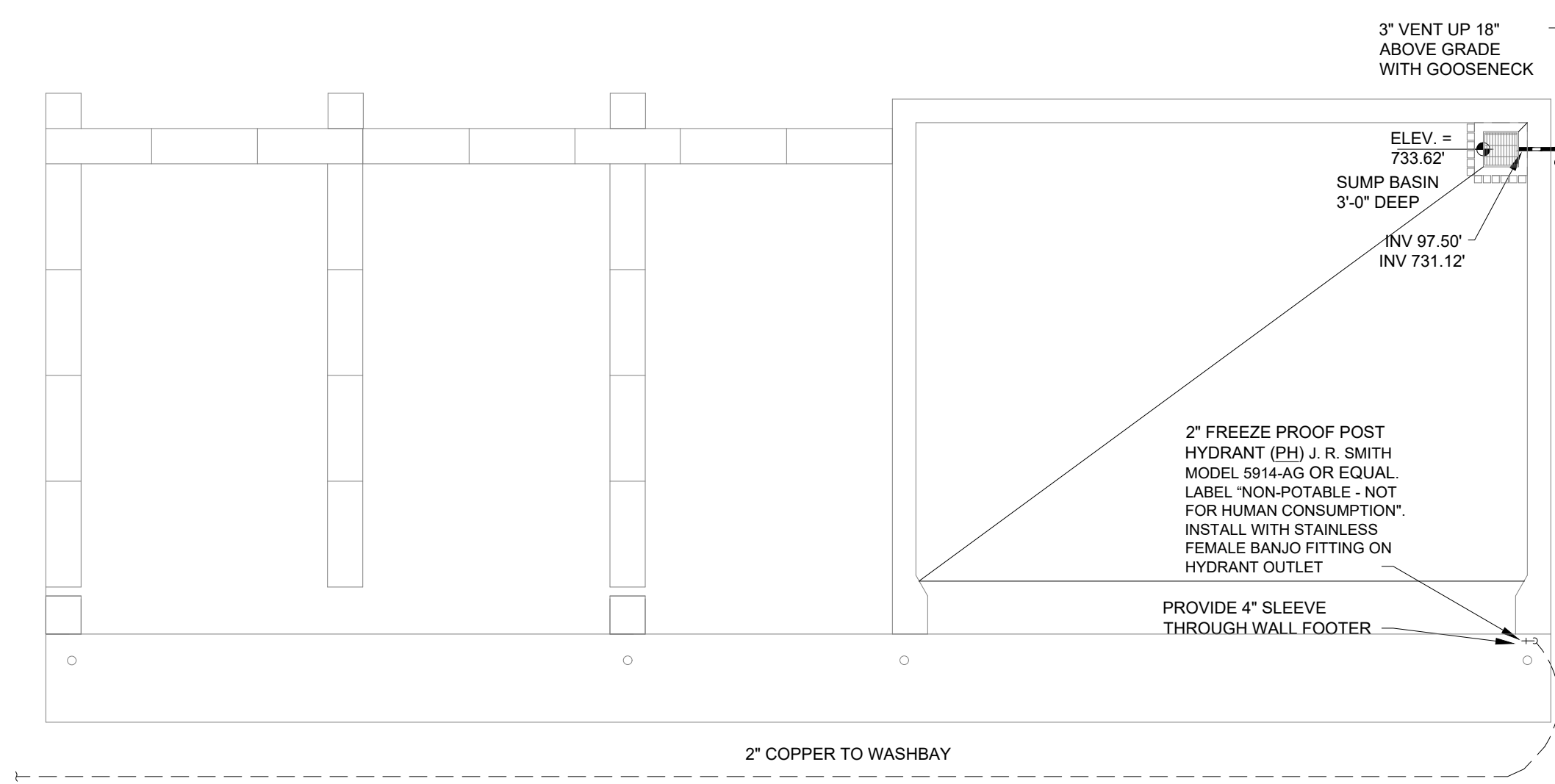
WASH BAY / MAINTENANCE FLOOR PLAN
SCALE: 1/8"=1'-0"

NOTE: OF/CI = OWNER FURNISHED AND CONTRACTOR INSTALLED. OWNER WILL DELIVER ITEMS TO JOB SITE. CONTRACTOR TO ASSIST OWNER IN UNLOADING ITEMS AT JOB SITE.

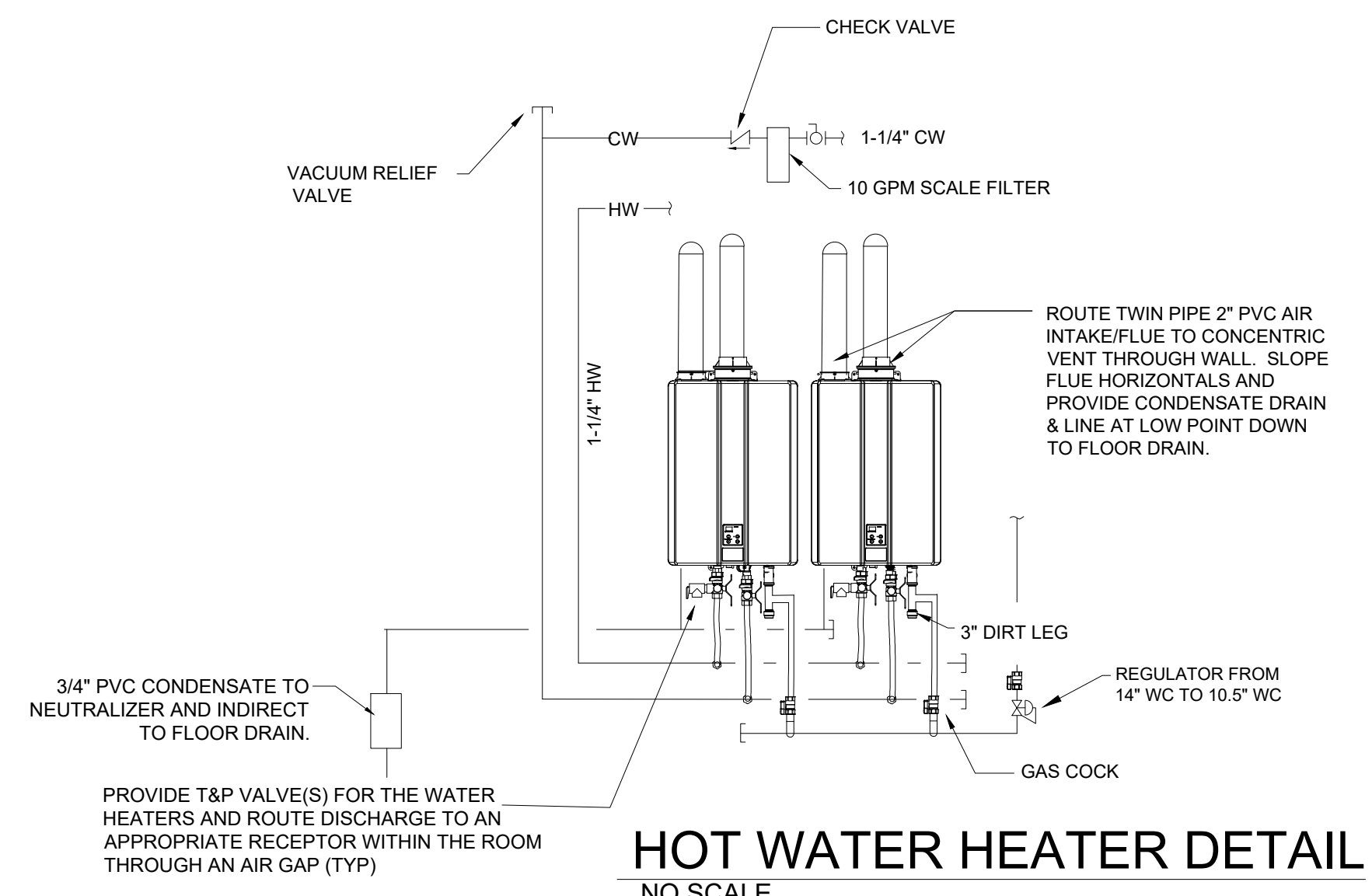
NOTE: SEE A9.1 FOR FURNITURE AND CASEWORK PLAN

KEY PLAN
SCALE: N.T.S.

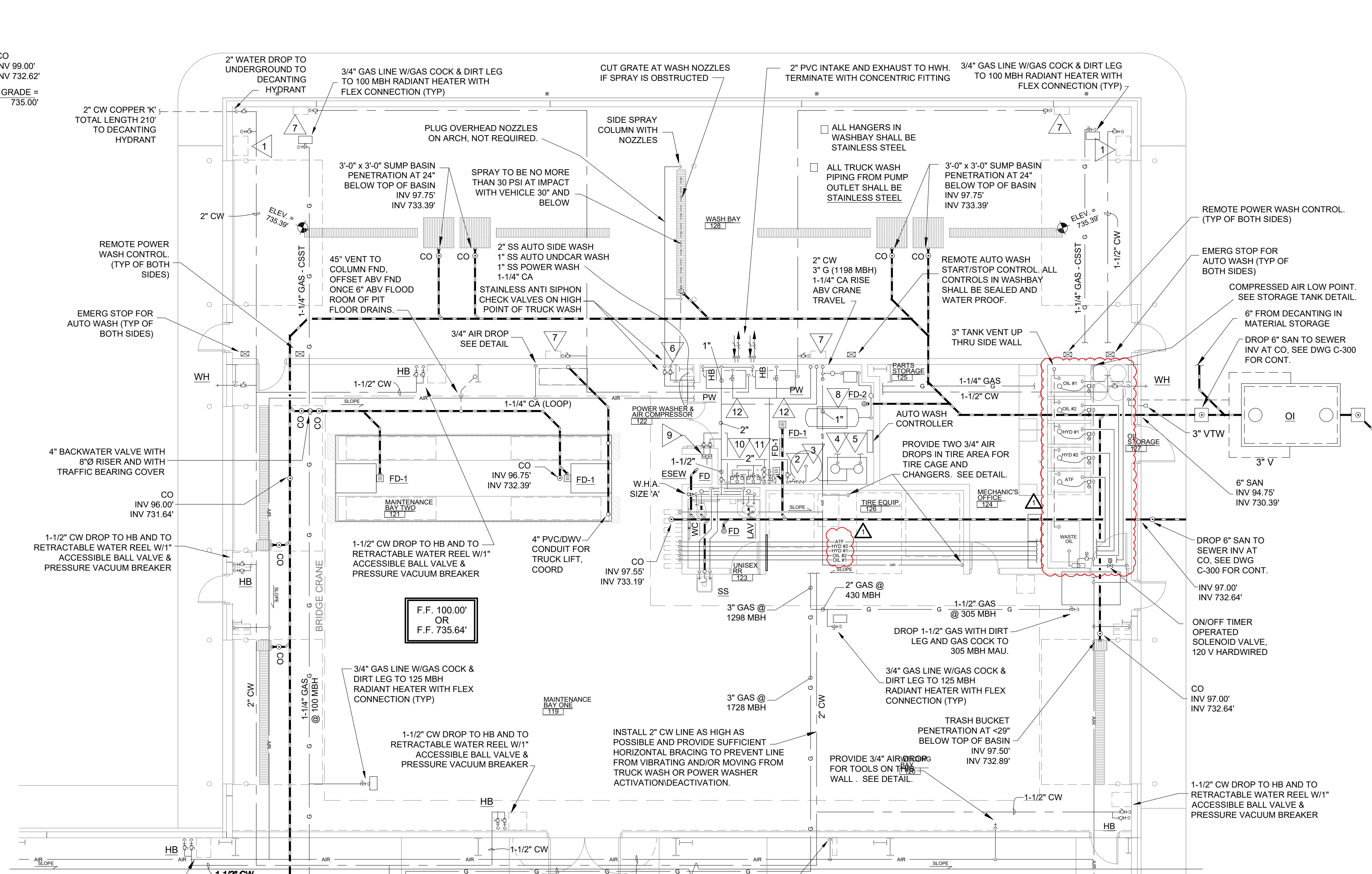




MATERIAL STORAGE FLOOR PLAN
SCALE: 1/8"=1'-0"



HOT WATER HEATER DETAIL
NO SCALE



MAINTENANCE & WASH BAY PLUMBING PLAN
SCALE: 1/8"=1'-0"

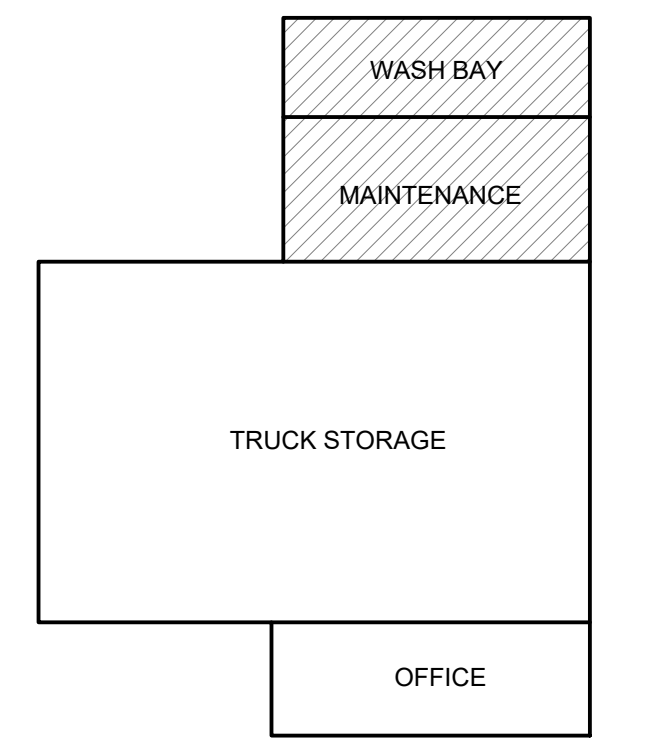
GAS PIPING TO APPLIANCE

NTS
ALL GAS PIPING SHALL BE INSTALLED IN ACCORDANCE WITH THE IFGC, PER 301.3 OMC
NATURAL GAS PIPING ABOVE GROUND AND IN BUILDING: STANDARD WEIGHT, SCHEDULE 40, WELDED, PLAIN END, WROUGHT STEEL PIPE AND FITTINGS (ANSI B36.10), WELDED JOINTS WITH BACKING RINGS. THREADED 125 PSI MALLEABLE IRON FITTINGS ARE PERMITTED ON PIPING 4 IN. AND SMALLER, IF LESS THAN 5 PSI PRESSURE, EXCEPT IN RETURN AIR CEILING PLENUMS, AND WHERE DROPPING IN WALLS.
CORRUGATED STAINLESS STEEL TUBING, FLEXIBLE (ASTM A240), 125 PSI MAXIMUM OPERATING PRESSURE SHALL BE 5 PSI. USE ONLY FITTINGS ASSOCIATED WITH CORRUGATED STAINLESS STEEL TUBING.

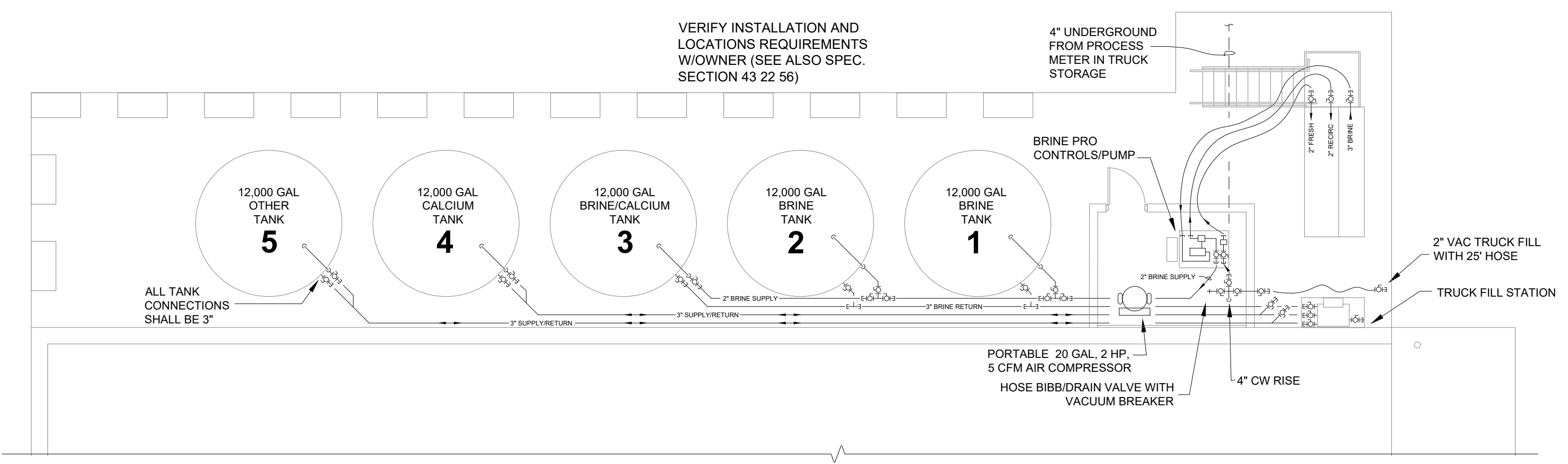
GAS LOAD CHART			
MARK	MBH	QUANTITY	LOAD (MBH)
OFFICE			
WATER HEATER	199	1	199
FURNACE	80	2	160
MAINTENANCE			
MAU	305	1	305
IR HEATER	125	2	250
TRUCK STORAGE			
IR HEATER	125	7	875
IR HEATER	200	1	200
WASH EQUIPMENT			
POWER WASHER	400	2	800
WATER HEATER	199	2	398
WASH BAY			
IR HEATER	100	2	200
SUB TOTAL			3387
GENERATOR	1965	1	1965
TOTAL			5352

KEYED NOTES

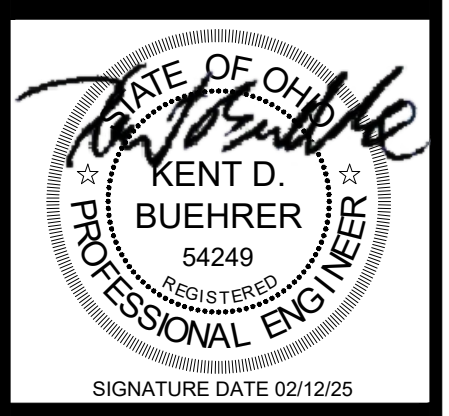
1. 1-1/2" CW DROP TO WATER REEL W/1" ACCESSIBLE BALL VALVE & PRESSURE VACUUM BREAKER
2. 2" REDUCED PRESSURE BACKFLOW PREVENTOR WITH 2" CW TO TRUCK WASH EQUIPMENT.
3. 2" CW TO AUTO WASH 500 GAL. 46"x77" STORAGE TANK
4. 2" WATER FROM AUTO SIDEWASH VERTICAL PUMP 60 GPM @ 333 PSI, 25 HP, 208v-3PH TO SIDE SPRAY COLUMN
5. 1" WATER FROM AUTO UNDERCARRIAGE VERTICAL PUMP 30 GPM @ 30 PSI, 1 HP, 208v-3PH TO UNDERCARRIAGE NOZZLES
6. DROP UNDERCARRIAGE SPRAY TO SS HEADER WITH NOZZLES IN TRENCH DRAIN. INSTALL IN 3" PVC EMBEDDED IN SLAB FROM DROP TO SIDE OF TRENCH DRAIN.
7. 1" STAINLESS STEEL HIGH PRESSURE LINE (HARD PIPED) DROP WITH VALVE TO 75' FLEX HOSE WITH BREAKAWAY LINE HUNG ON GUIDE WIRE MOUNTED AT (TYP)
8. 15 HP ROTARY SCREW AIR COMP ON 120 GAL TANK. SEE AIR COMPRESSOR PIPING DETAIL ON DWG P2.3 FOR ADDITION EQUIPMENT, IE CENTRIFUGAL SEPARATOR, AIR DYER, OIL FILTER AND LOW POINT DROP WITH TRAP.
9. 1-1/4" CW & 1" HW ON WALL TO EMERGENCY MIXING VALVE, EMV. INSTALL 1-1/4" TEMP WATER TO SHOWER.
10. 1-1/4" CW DROP TO TANKLESS WATER HEATERS, HWH. (2 THUS) SEE WATER HEATER DETAIL, THIS SHEET.
11. 1-1/2" GAS DROP W/GAS COCK, REGULATOR TO 10.5 WC TO TANKLESS WATER HEATER, HWH. SEE WATER HEATER DETAIL, THIS SHEET.
12. DROP 1-1/2" GAS WITH DIRT LEG & GAS COCK TO 400 MBH POWER WASHER OFF OF 3" GAS HEADER. SOAP INJECTION TO BE AFTER HEATING COILS.



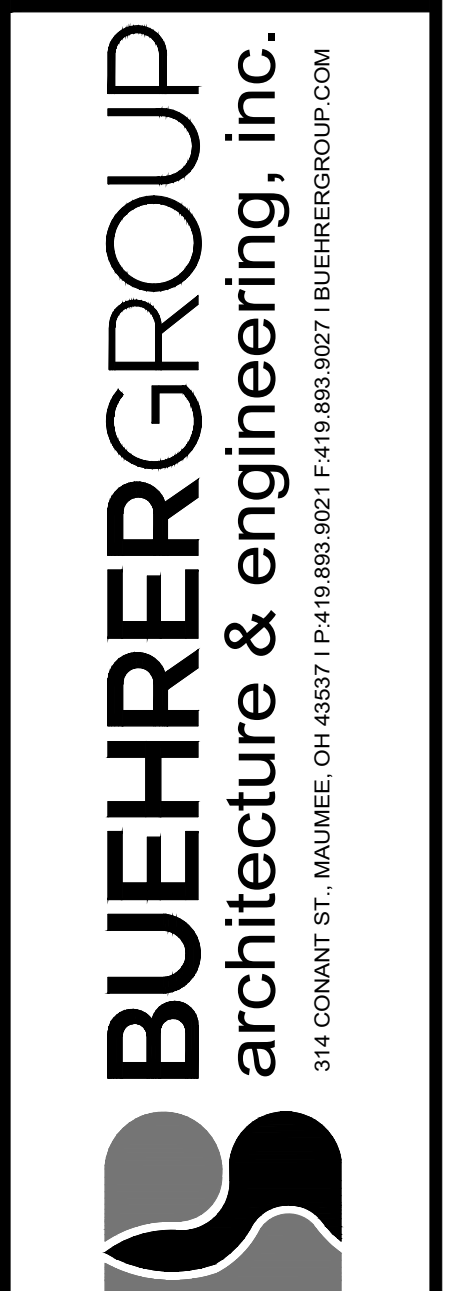
KEY PLAN
SCALE: N.T.S.



SALT STORAGE & BRINE FLOOR PLAN
SCALE: 1/8"=1'-0"



PUTNAM COUNTY FSM FACILITY
FOR
OHIO DEPARTMENT OF
TRANSPORTATION
VILLAGE OF OTTAWA, OH



REVISION SCHEDULE	
Δ	02/21/2025 - ADDENDUM #1

ISSUE DATE: 02/12/2025
JOB NUMBER: 240652
BID DOCUMENTS

P2.2
WASH BAY, MAINTENANCE BAY, & BRINE SHELTER PLUMBING PLAN

NEW MDP													
MOUNTING:		SURFACE		LOCATION:		3 PH		4		WIRE		FED FROM:	
MOUNTING:		SURFACE		LOCATION:		3 PH		4		WIRE		FED FROM:	
DESCRIPTION	LOAD	A	B	C	AMPS	CKT	CKT	AMPS	A	B	C	LOAD	DESCRIPTION
PANEL F	1500	1640	2540	400	7092	7410	60750						EDP VIA ATS #1
PANEL TS	6400	5900	4300	200									SURGE SUPPRESSION
PANEL O	5500	4200		100									SPACE
SPACE													SPACE
SUBTOTAL #1		2590	2550	3450					7092	7410	60750	SUBTOTAL #2	
SUBTOTAL #1 + #2		9732	10430	19150								DEMANDED: 741.5 A MINIMUM FEEDER	
TOTAL PANEL LOAD:		303.5	KVA	842.4	AMPS							DEMANDED: 741.5 A MINIMUM FEEDER	

NEW EDP													
MOUNTING:		SURFACE		LOCATION:		3 PH		4		WIRE		FED FROM:	
DESCRIPTION	LOAD	A	B	C	AMPS	CKT	CKT	AMPS	A	B	C	LOAD	DESCRIPTION
PANEL FE	46302	44907	41798	400	7073	7081	7341						PANEL TSE
PANEL OE	10650	12250	9754	100									PANEL CS
PANEL B	3417	7417	6817	100									SPARE
SPACE													SURGE SUPPRESSION
SUBTOTAL #1		65459	64274	58558					10493	10236	8341	SUBTOTAL #2	
SUBTOTAL #1 + #2		79932	74810	66750								DEMANDED: 618.8 A MINIMUM FEEDER	
TOTAL PANEL LOAD:		212.5	KVA	589.9	AMPS							DEMANDED: 618.8 A MINIMUM FEEDER	

NEW FACILITY EMERGENCY PANEL "FE"													
MOUNTING:		SURFACE		LOCATION:		3 PH		4		WIRE		FED FROM:	
DESCRIPTION	LOAD	A	B	C	AMPS	CKT	CKT	AMPS	A	B	C	LOAD	DESCRIPTION
IR-446b	HVAC	312			20	1	2		721				RECEPTACLES
IR-241g	HVAC	312			20	3	4		721				RECEPTACLES
EF-9	HVAC			350	20	5	6		721				RECEPTACLES
OHD 119B	M	504		504	20	9	10		1893				HP-2AC-2
OHD 120B	M	504		504	20	13	14		800				RECEPTACLES
OHD 121B	M	504		504	20	19	20		2500				EH-3
OHD 128B	M	504		504	20	27	28		1248				EH-3
OHD 129B	M	504		504	20	31	32		721				EF-7a
MJA-1	HVAC	1153		1153	20	39	40		504				EF-4
GAS PUMP	M	790		790	20	43	44						SPARE
DIESEL PUMP	M	790		790	20	47	48		819				L LIGHTS
DIESEL DISPENSER	R	500		500	20	51	52		1190				L WASHBAY LIGHTS
FUEL PUMP LIGHTS	L	260		260	20	57	58		5284				TRUCK LIFT
FUEL PUMP CONTACTOR	R	390		390	20	59	60		500				R HOT WATER HEATER
POWER WASHER	M	3362		3362	35	63	64		5044				R HOT WATER HEATER
POWER WASHER	M	3362		3362	35	65	66		5044				M AIR COMPRESSOR
LS POWER DAMPER	HVAC	200		200	20	71	72		721				HVAC EF-7b
AUTOWASH CONTROL PANEL	M	8694		8694	110	75	76		2000				R AUTOWASH CONTROL PANEL
WASHER DRAFT IND	HVAC	200		200	20	79	80		2000				SPARE
WASHER DRAFT IND	HVAC	200		200	20	81	82						SPARE
SUBTOTAL #1		22387	21537	21235					24005	23750	20564	SUBTOTAL #2	
SUBTOTAL #1 + #2		46392	44907	41788								DEMANDED: 396.6 A MINIMUM FEEDER	
TOTAL PANEL LOAD:		133.1	KVA	369.5	AMPS							DEMANDED: 396.6 A MINIMUM FEEDER	

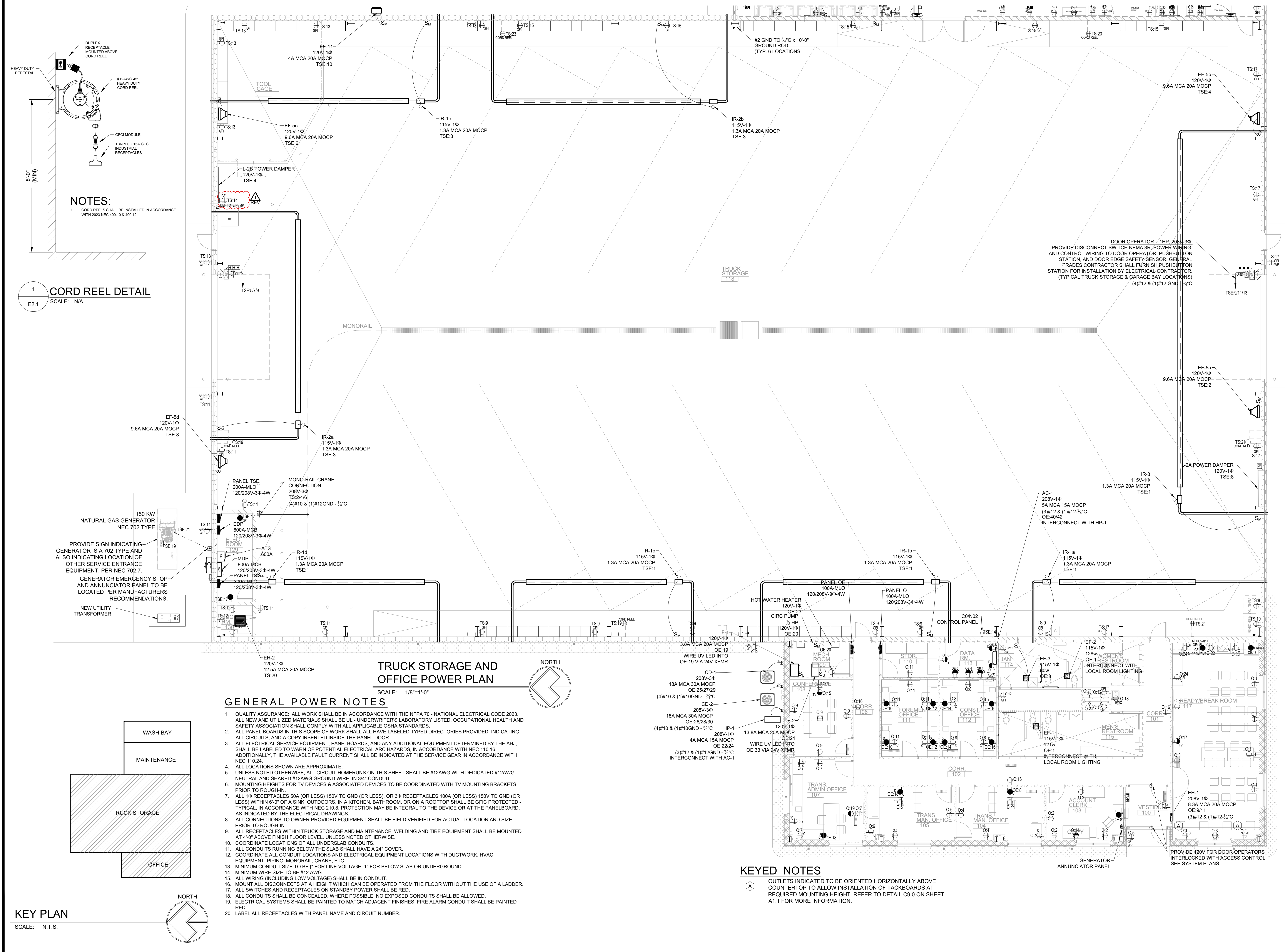
NEW TRUCK STORAGE EMERGENCY PANEL "TSE"													
MOUNTING:		SURFACE		LOCATION:		3 PH		4		WIRE		FED FROM:	
DESCRIPTION	LOAD	A	B	C	AMPS	CKT	CKT	AMPS	A	B	C	LOAD	DESCRIPTION
IR-1a,1b,1c,1d,1e	HVAC	780			20	1	2		1152				HVAC EF-5a
IR-2a,2b,2c	HVAC	468			20	3	4		1152				HVAC EF-5a,2B
OHD 118A	M	504		504	20	5	6		1152				HVAC EF-5c
OHD 119C	M	504		504	20	7	8		1152				HVAC EF-5a,2A
RECEPTACLE	R	400		400	20	9	10		480				HVAC EF-11
GENERATOR BATT	R	200		200	20	11	12						SPARE
GENERATOR HEAT	R	200		200	20	13	14		500				HVAC CONDUIT CTRL PANEL
CONTRACTOR	R	200		200	20	15	16		1000				M GATE MOTOR
EXT LIGHTS	L	848		848	20	17	18		1000				M GATE MOTOR
LIGHTS	L	1500		1500	20	19	20						SPARE
LIGHTS	L	2250		2250	20	21	22		1272				L EXT LIGHTING
LIGHTS	L	900		900	20	23	24		1330				L SITE LIGHTING
SUBTOTAL #1		3722	3177	3899					3336	3905	3452	SUBTOTAL #2	
SUBTOTAL #1 + #2		7873	7381	7341								DEMANDED: 66.62 A MINIMUM FEEDER	
TOTAL PANEL LOAD:		21.5	KVA	59.7	AMPS							DEMANDED: 66.62 A MINIMUM FEEDER	

NEW COLD STORAGE PANEL													
MOUNTING:		SURFACE		LOCATION:		3 PH		4		WIRE		FED FROM:	
DESCRIPTION	LOAD	A	B	C	AMPS	CKT	CKT	AMPS	A	B	C	LOAD	DESCRIPTION
RECEPTACLES	R	1000			20	1	2		1000				L LIGHTS
RECEPTACLES	R	1000			20	3	4		555				L LIGHTS
RECEPTACLES	R	600		600	20	5	6						SPARE
RECEPTACLES	R	400		400	20	7	8		1000				M OHD 200B
RECEPTACLES	R	600		600	20	9	10		1000				M OHD 200D
TECH RACK	R	400		400	20	11	12						SPARE
SUBTOTAL #1		1400	1600	1000					2000	1555	9	SUBTOTAL #2	
SUBTOTAL #1 + #2		3429	3188	1999								DEMANDED: 25.68 A MINIMUM FEEDER	
TOTAL PANEL LOAD:		7.6	KVA	21.0	AMPS							DEMANDED: 25.68 A MINIMUM FEEDER	

NEW OFFICE EMERGENCY PANEL "OE"													
MOUNTING:		SURFACE		LOCATION:		3 PH		4		WIRE		FED FROM:	
DESCRIPTION	LOAD	A	B	C	AMPS	CKT	CKT	AMPS	A	B	C	LOAD	DESCRIPTION
LIGHTS	L	1081			20	1	2		800				R RECEPTACLE
LIGHTS	L	1072			20	3	4		800				R RECEPTACLE
LIGHTS	L			872	20	5	6		800				R RECEPTACLE
EXT LIGHTS	L	240			20	7	8		600				R RECEPTACLE
EH-1	HVAC			863	20	9	10		800				R RECEPTACLE
FRIDGE	K	750		750	20	11	12		800				R RECEPTACLE
MICROWAVE	K	1000		1000	20	13	14		800				R RECEPTACLE
FACP	R	200		200	20	15	16		800				R RECEPTACLE
F-1	HVAC	1668		1668	20	17	18		200				WEH RECRIP PUMP
F-2	HVAC	1668		1668	20	19	20		938				HVAC HP-1AC-1
HOT WATER HEATER	WEH			400	20	21	22		2162				HVAC CD-2
CD-1	HVAC	2162		2162	30	23	24		2162				HVAC CD-2
RECEPTACLES	R				20	25	26		2162				SPARE
SUBTOTAL #1		5880	6753	5297					4752	5498	5498	SUBTOTAL #2	
SUBTOTAL #1 + #2		10660	12258	9794								DEMANDED: 95.89 A MINIMUM FEEDER	
TOTAL PANEL LOAD:		32.7	KVA	90.8	AMPS							DEMANDED: 95.89 A MINIMUM FEEDER	

NEW OFFICE PANEL "O"													
MOUNTING:		SURFACE		LOCATION:		3 PH		4		WIRE		FED FROM:	
DESCRIPTION	LOAD	A	B	C	AMPS	CKT	CKT	AMPS	A	B	C	LOAD	DESCRIPTION
RECEPTACLES	R	1000			20	1	2		800				R RECEPTACLES
RECEPTACLES	R	800			20	3	4		800				R RECEPTACLES
RECEPTACLES	R	400		400	20	5	6		800				R RECEPTACLES
RECEPTACLES	R	1000		1000	20	7	8		1000				R RECEPTACLES
RECEPTACLES	R	1000		1000	20	9	10		200				R RECEPTACLES
RECEPTACLES	R	1000		1000	20	11	12		800				R RECEPTACLES
SPARE					20	13	14		1500				R PRINTER
TV RECEPTACLE	R	200		200	20	15	16		600				R RECEPTACLES
TV RECEPTACLE	R	200		200	20	17	18		1000				R EVC
TV RECEPTACLE	R	200		200	20	19	20						SPARE
FAUCET/FLUSH VALVE	R	200		200	20	21	22		400				R RECEPTACLES
SPARE					20	23	24		400				R RECEPTACLES
SPARE					20	25	26						SPARE
SPARE					20	27	28						SPARE
SPARE					20	29	30						SPARE
SUBTOTAL #1		2200	2200	1800					3300	2000	3000	SUBTOTAL #2	
SUBTOTAL #1 + #2		5800	4200	4800								DEMANDED: 40.94 A MINIMUM FEEDER	
TOTAL PANEL LOAD:		14.5	KVA	40.2	AMPS							DEMANDED: 40.94 A MINIMUM FEEDER	

NEW TRUCK STORAGE PANEL "TS"													
MOUNTING:		SURFACE		LOCATION:		3 PH		4		WIRE		FED FROM:	
DESCRIPTION	LOAD	A	B										

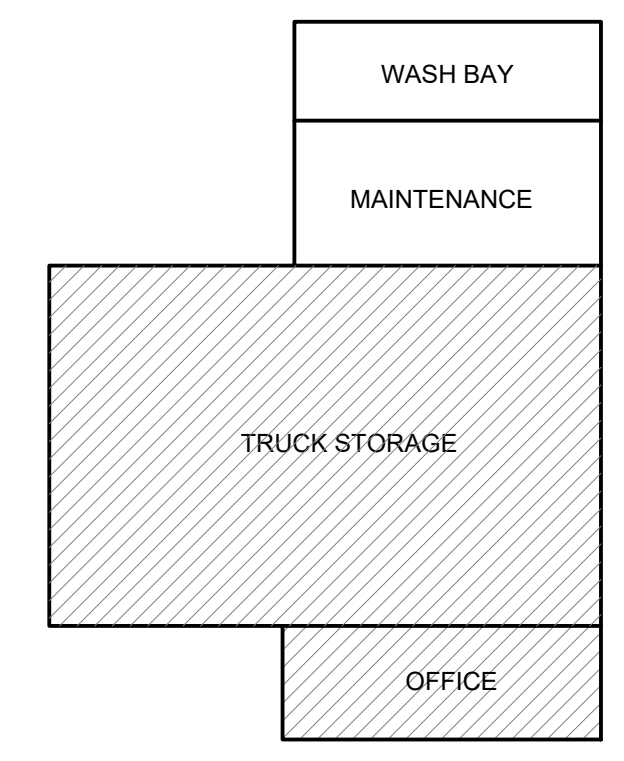


1 CORD REEL DETAIL
SCALE: N/A

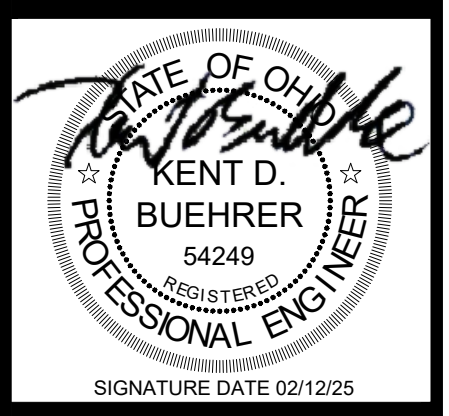
TRUCK STORAGE AND OFFICE POWER PLAN
SCALE: 1/8"=1'-0"

- GENERAL POWER NOTES**
1. QUALITY ASSURANCE: ALL WORK SHALL BE IN ACCORDANCE WITH THE NFPA 70 - NATIONAL ELECTRICAL CODE 2023. ALL NEW AND UTILIZED MATERIALS SHALL BE UL - UNDERWRITERS LABORATORY LISTED. OCCUPATIONAL HEALTH AND SAFETY ASSOCIATION SHALL COMPLY WITH ALL APPLICABLE OSHA STANDARDS.
 2. ALL PANEL BOARDS IN THIS SCOPE OF WORK SHALL ALL HAVE LABELED TYPED DIRECTORIES PROVIDED, INDICATING ALL CIRCUITS, AND A COPY INSERTED INSIDE THE PANEL DOOR.
 3. ALL ELECTRICAL SERVICE EQUIPMENT, PANELBOARDS, AND ANY ADDITIONAL EQUIPMENT DETERMINED BY THE AHJ, SHALL BE LABELED TO WARN OF POTENTIAL ELECTRICAL ARC HAZARDS, IN ACCORDANCE WITH NEC 110.16. ADDITIONALLY, THE AVAILABLE FAULT CURRENT SHALL BE INDICATED AT THE SERVICE GEAR IN ACCORDANCE WITH NEC 110.24.
 4. ALL LOCATIONS SHOWN ARE APPROXIMATE.
 5. UNLESS NOTED OTHERWISE, ALL CIRCUIT HOMERUNS ON THIS SHEET SHALL BE #12AWG WITH DEDICATED #12AWG NEUTRAL AND SHARED #12AWG GROUND WIRE, IN 3/4" CONDUIT.
 6. MOUNTING HEIGHTS FOR TV DEVICES & ASSOCIATED DEVICES TO BE COORDINATED WITH TV MOUNTING BRACKETS PRIOR TO ROUGH-IN.
 7. ALL 1Ø RECEPTACLES 50A (OR LESS) 150V TO GND (OR LESS), OR 3Ø RECEPTACLES 100A (OR LESS) 150V TO GND (OR LESS) WITHIN 6'-0" OF A SINK, OUTDOORS, IN A KITCHEN, BATHROOM, OR ON A ROOFTOP SHALL BE GFCI PROTECTED - TYPICAL, IN ACCORDANCE WITH NEC 210.8. PROTECTION MAY BE INTEGRAL TO THE DEVICE OR AT THE PANELBOARD, AS INDICATED BY THE ELECTRICAL DRAWINGS.
 8. ALL CONNECTIONS TO OWNER PROVIDED EQUIPMENT SHALL BE FIELD VERIFIED FOR ACTUAL LOCATION AND SIZE PRIOR TO ROUGH-IN.
 9. ALL RECEPTACLES WITHIN TRUCK STORAGE AND MAINTENANCE, WELDING AND TIRE EQUIPMENT SHALL BE MOUNTED AT 4'-0" ABOVE FINISH FLOOR LEVEL, UNLESS NOTED OTHERWISE.
 10. COORDINATE LOCATIONS OF ALL UNDERSLAB CONDUITS.
 11. ALL CONDUITS RUNNING BELOW THE SLAB SHALL HAVE A 24" COVER.
 12. COORDINATE ALL CONDUIT LOCATIONS AND ELECTRICAL EQUIPMENT LOCATIONS WITH DUCTWORK, HVAC EQUIPMENT, PIPING, MONORAIL, CRANE, ETC.
 13. MINIMUM CONDUIT SIZE TO BE 1" FOR LINE VOLTAGE, 1" FOR BELOW SLAB OR UNDERGROUND.
 14. MINIMUM WIRE SIZE TO BE #12 AWG.
 15. ALL WIRING (INCLUDING LOW VOLTAGE) SHALL BE IN CONDUIT.
 16. MOUNT ALL DISCONNECTS AT A HEIGHT WHICH CAN BE OPERATED FROM THE FLOOR WITHOUT THE USE OF A LADDER.
 17. ALL SWITCHES AND RECEPTACLES ON STANDBY POWER SHALL BE RED.
 18. ALL SWITCHES SHALL BE CONCEALED, WHERE POSSIBLE. NO EXPOSED CONDUITS SHALL BE ALLOWED.
 19. ELECTRICAL SYSTEMS SHALL BE PAINTED TO MATCH ADJACENT FINISHES. FIRE ALARM CONDUIT SHALL BE PAINTED RED.
 20. LABEL ALL RECEPTACLES WITH PANEL NAME AND CIRCUIT NUMBER.

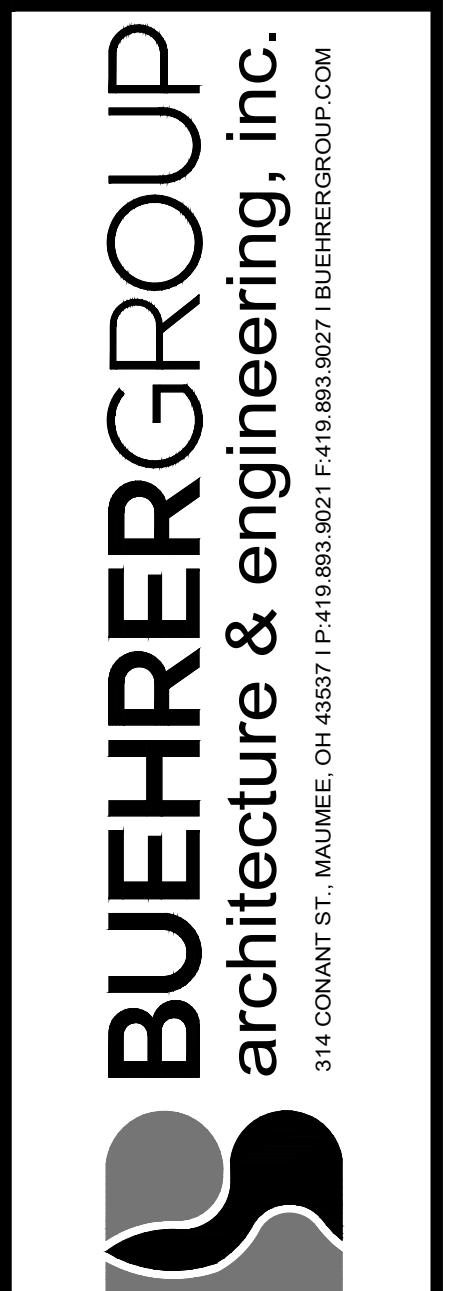
- KEYED NOTES**
- (A) OUTLETS INDICATED TO BE ORIENTED HORIZONTALLY ABOVE COUNTERTOP TO ALLOW INSTALLATION OF TACKBOARDS AT REQUIRED MOUNTING HEIGHT. REFER TO DETAIL C9.0 ON SHEET A1.1 FOR MORE INFORMATION.



KEY PLAN
SCALE: N.T.S.



PUTNAM COUNTY FSM FACILITY
FOR
OHIO DEPARTMENT OF
TRANSPORTATION
VILLAGE OF OTTAWA, OH



REVISION SCHEDULE	
Δ	02/21/2025 - ADDENDUM #1

ISSUE DATE: 02/12/2025
JOB NUMBER: 240652

BID DOCUMENTS

E2.1
OFFICE / TRUCK STORAGE
FLOOR PLAN