



Engineering a Greener Tomorrow  
...Today

**Metro CD Engineering, LLC**  
5880 Sawmill Rd.  
Suite 200  
Dublin, Ohio 43017  
Tel: 614.923.3930  
Fax: 614.543.8308

---

## **BID Addendum #1**

**Project:** SFC-23N002; OSSB OSSD Energy Project  
**Date:** 5/1/2025  
**Location:** Ohio School for the Deaf  
**By:** Michael Chow, Metro CD Engineering

1. Bid close date: 2:00pm, May 6<sup>th</sup> 2025 **revised to 2:00pm, May 13<sup>th</sup> 2025.**
2. Pre-Bid Meeting April 17<sup>th</sup> 2025 @ 10:00 a.m.:
  - a. Work Restrictions: OSSB & OSSD O&M directs the contractor to coordinate with OSSB / OSSD O&M (Danny Ransey, Administrator of Facilities, 614-679-2637) on access for any work performed in student areas, specifically school buildings. Recommending flexibility in contractor scheduling / phasing to take advantage of day-to-day school building accessibility.
  - b. Substitutions: Metro CD will review manufacturer substitutions outside the basis of design and outside the two listed alternate manufacturers / model numbers in bid document lighting fixture schedule. For any substitute manufacturer approved by engineer of record for general compliance, the contractor assumes all risk associated with errors in model numbers or incompatibility between existing fixtures and new fixture ordered under a like-for-like scope of work.
  - c. Revise OSSD / OSSB contact information in contract documents:
    - i. Danny Ransey OSSD / OSSB Administrator: 614-679-2637
    - ii. Daric Sott OSSD / OSSB O&M: 614-679-2639
3. Pre-Bid Meeting Walk-through
  - a. OSSB Old School: Added missing E1 fixtures, sheet E106, multi-purpose room 135.
  - b. OSSB Old School: Removed from scope of work existing fixtures O&M reports as previously upgraded to LED type. Sheets affected are E102, E105.
  - c. OSSB Old School: Added to scope of work Gymnasium (room 176) sheet E102 switching scope of work. Scope of work includes installation of (2) toggle type wall switches to relocate & replace (1) existing switch and add local switching where currently switching is performed using power panel breakers. Power panel located in an adjacent room.

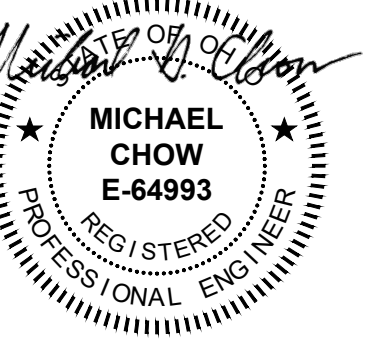
- d. OSSD Admin: Linear / utility strip / fixtures with end-to-end, through wired, and surface mounted 1x4 or 2x4 rectangular fixtures where mounting surface is of popcorn type finish are to be type "B" retrofit. Light fixtures approved for LED type "B" retrofit / re-lamp are as identified in drawings.
  - e. OSSD Admin sheet E104, cafeteria area adjacent rooms added scope to relocate local lighting switching. Added clarification on cafeteria switching scope of work.
  - f. OSSD New School: all interior fixtures to be type "B" retrofit (277V).
  - g. OSSD Old School gymnasium, sheet E101 switching to be demoed and re-wired using (4) 4-gang 3-way switches, bypassing existing lighting controller.
  - h. OSSD Old School common areas & hallways: Linear / utility strip / fixtures with end-to-end, through wired, and surface mounted 1x4 or 2x4 rectangular fixtures where mounting surface is of popcorn type finish are to be type "B" retrofit. Light fixtures approved for LED type "B" retrofit / re-lamp are as identified in drawings.
  - i. OSSD Old School common areas & hallways: Removed from scope of work existing fixtures O&M reports as previously upgraded to LED type. Drawings E102, E103,
4. Request For Interpretations (RFIs):
- a. What specific areas/rooms need dimming/dimming control in the OSSB?
    - i. Schools only, New & Old: Wireless dimming restricted to student areas, classrooms, common areas & hallways. Bid addendum 1 drawing changes will clarify what areas & rooms require wireless dimming.
  - b. What specific areas/rooms need dimming/dimming control in the OSSD?
    - i. There is no dimming in OSD buildings.
    - ii. Where dual ballast is found, one of the existing switches will be demoed, and the two switch travelers will be spliced together.
    - iii. Where a dimmer is encountered, it is to be replaced with a toggle type wall switch.
  - c. OSSB, New School: Type K3, quantity 9 listed on page E101, E102, & E104 not in schedule.
    - i. These fixtures are already LED and are removed from scope of work.
  - d. OSSB, New School: Type B6 listed on page E102 not in schedule.
    - i. All B6 fixtures in OSSB drawings should have been re-tagged as B5.
  - e. OSSB, New School: F8 page E102 not in schedule.
    - i. F8 is an underwater fountain fixture.
    - ii. This was descoped on account of high probability of complications with retrofitting or replacing existing underwater 8" recessed can light.

5. Substitutions Requested & Approved:
  - a. Manufactures approved for substitution include: ATG, Crystal Lighting, Access, Juno, Atlantic Lighting, Spitzer Lighting, VersaLED Lighting, Mark Architectural Lighting.
  - b. DLC listing requirements: Fixtures C3, C4, F3, F6 for both School for the Blind & Deaf, and D6 for School for the Blind, are exempt from DLC listing requirements. These fixtures are architectural.
  - c. OSSB lighting fixture schedule lists identical model numbers for alternate 1 and alternate 2 for fixture F3. Revise Alt 2 model number in OSSB for F3 to match model # for Alt 2 in OSSD (Juno WF6).
  
6. Allowances:
  - a. Provide to the Owner/Agency Building Superintendent at the completion of the project the following spare parts:
    - i. LED Fixtures & Type "C" retrofit can lighting: 1% of construction quantities.
    - ii. LED Type "B" retrofit lamps: 2% of construction quantities.
  
7. Drawing Changes:
  - a. Drawing changes because of pre-bid meeting and follow up direction, scope clarification and scope additions by OFCC & OSSB/OSSD O&M are as listed above under "Pre-Bid Meeting walk-through.
  - b. OSSB New School: Drawings E101, E102, E103, E104 & E105 are revised to show wireless dimming wall-switches in all areas where required.
  - c. OSSB Old School: Drawings E101, E102, E103, E104, E105, E106 & EE107 are revised to show wireless dimming wall-switches in all areas where required.

**END OF DOCUMENT**







REV	DATE	RELEASED FOR
5/1/2025		BID ADDENDUM 1
4/7/2025		BID SET
3/17/2025		PERMIT SET
7/9/2024		50% SD / DD SUBMISSION

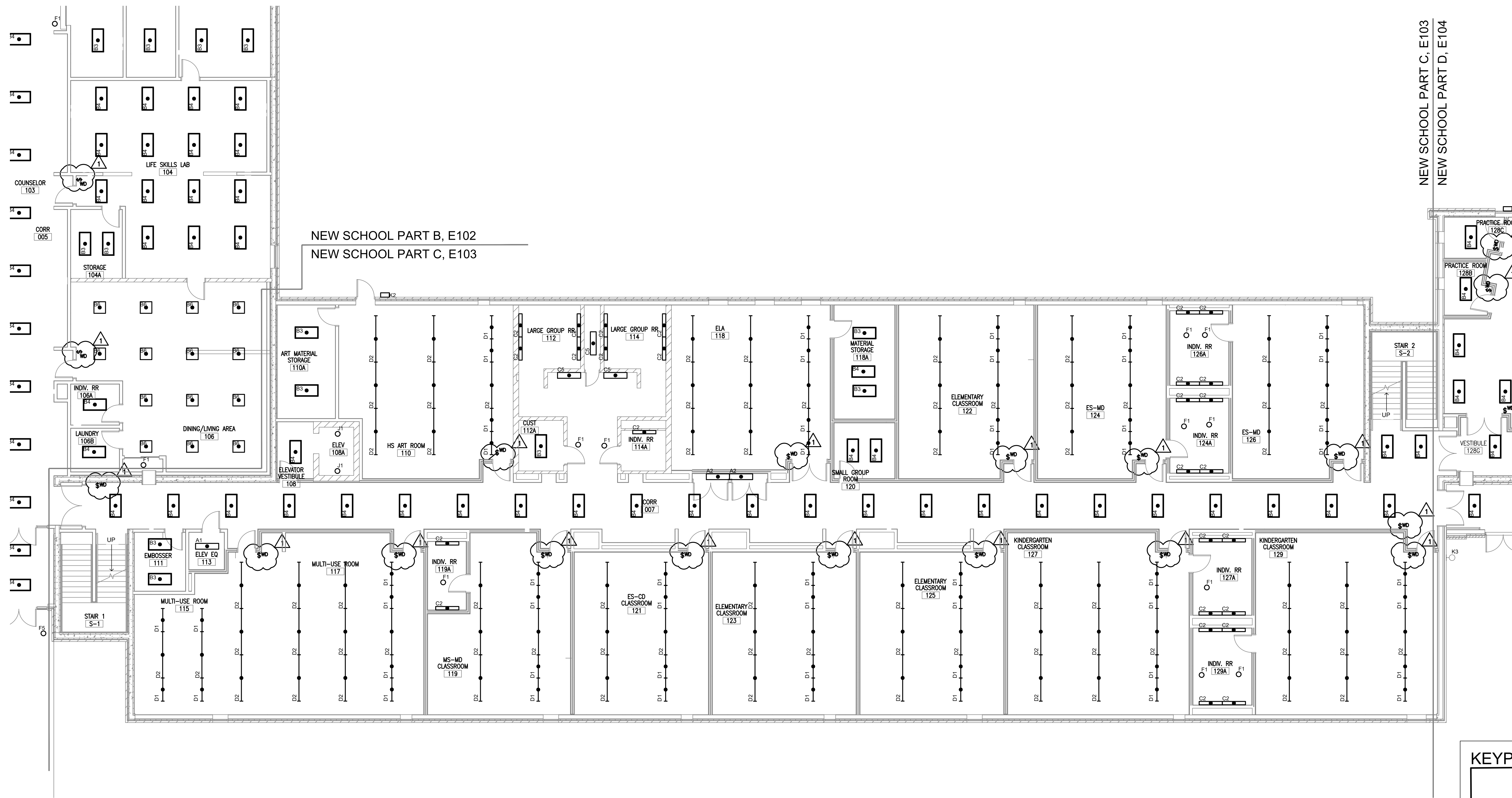
DESIGNED	MM	JOB NUMBER
DRAWN	TH <td>22070-01</td>	22070-01
CHECKED	MC <td>DATE</td>	DATE
		3/17/2025

**LIGHTING PLAN,  
1'ST FLOOR,  
ZONE C**

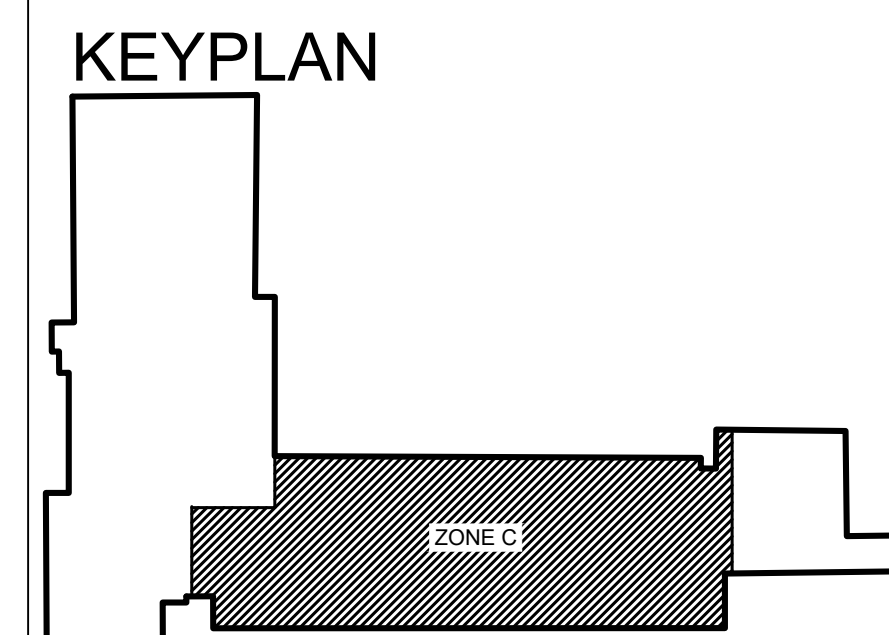
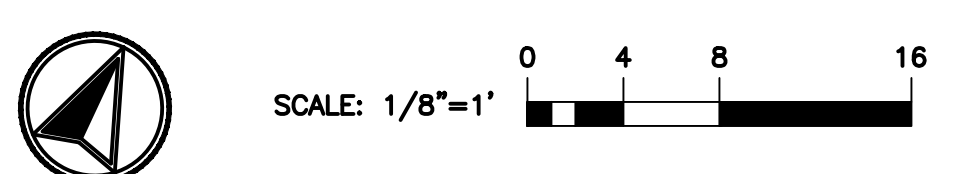
**E103**

**DRAWING NOTES:**

- A. ELECTRICAL CONTRACTOR SHALL REPLACE EXISTING LIGHT FIXTURES AS IDENTIFIED IN PROJECT DRAWINGS WITH NEW LED LIGHT FIXTURE PER LIGHTING FIXTURE SCHEDULE ON SHEETS E201. ELECTRICAL CONTRACTOR SHALL REMOVE EXISTING LIGHT FIXTURE IN ITS ENTIRETY, UNLESS EXISTING LIGHT FIXTURE IS NOTED TO RECEIVE A RETROFIT KIT OR REPLACEMENT LAMPS, RECYCLE DEMO FIXTURES PROPERLY, CONFIRM WITH FACILITIES THE DISPOSITION OF REMOVED LIGHTING FIXTURES. ELECTRICAL CONTRACTOR SHALL DISCONNECT EXISTING POWERS AND CONTROL WIRING FROM EXISTING LIGHT FIXTURE AND RECONNECT TO NEW LIGHT FIXTURE FOR A COMPLETE AND OPERABLE SYSTEM. EXISTING LIGHTING CONTROLS ARE TO REMAIN AND BE REUSED AS IS UNLESS NOTED OTHERWISE. VERIFY EXACT REQUIREMENTS IN FIELD PRIOR TO BID AND INCLUDE ALL COSTS IN BID.
- B. ALL EXISTING LIGHTING CONTROLS TO REMAIN AND BE REUSED UNLESS NOTED OTHERWISE.
- C. EXISTING DUAL BALLAST LIGHT FIXTURES, SPECIFICALLY THOSE WHERE CENTER AND OUTSIDE LAMPS ARE CONTROLLED INDEPENDENTLY VIA SEPARATE WALL SWITCHES, THE CONTRACTOR IS TO SPICE TOGETHER THE TWO TRAVELERS AFTER VERIFYING THE TRAVELERS ARE POWERED FROM THE SAME CIRCUIT. NEXT, THE CONTRACTOR WILL DEMO ONE OF THE WALL SWITCHES, REPLACING THE SWITCH WITH STAINLESS BOX COVER.
- D. FOR SURFACE MOUNTED 1X4, 2X4, OR STRIP TYPE FIXTURES MOUNTED END TO END, VERIFY IF FIXTURES ARE WIRED SUCH THAT THE EXISTING FIXTURE IS USED AS A WIRE-WAY. FOR BIDDING PURPOSES, TAKE INTO ACCOUNT ADDITIONAL WORK AND MATERIALS TO PROVIDE AND INSTALL CONDUIT AND WIRING FOR REPLACEMENT LED FIXTURES NOT LISTED AS "AUTHORIZED FOR USE AS A WIRE-WAY", TO INCLUDE PROVIDING AND INSTALLING OPTIONAL SURFACE MOUNT KITS TO FACILITATE CONCEALING FLEX CABLE INSTALLATION WHERE NEEDED.
- E. ELECTRICAL CONTRACTOR SHALL NOT DISTURB, PENETRATE OR MODIFY EXISTING CEILINGS. ELECTRICAL CONTRACTOR SHALL VERIFY EXISTING PENETRATIONS AND PATHWAYS FOR A COMPLETE INSTALLATION.
- F. WIRE ALL EMERGENCY LIGHTING AHEAD OF ALL SWITCHING AND CONTROLS.
- G. CONNECT NEW LIGHT FIXTURES TO EXISTING CIRCUIT SERVING EXISTING LIGHT FIXTURE. BECAUSE NEW LED FIXTURE AND LAMPS ARE MORE ENERGY EFFICIENT THAN EXISTING FIXTURES, AND LUMEN OUTPUT BETWEEN OLD AND NEW FIXTURES IS MATCHED, ALL EXISTING LIGHTING CIRCUITS WILL CONSUME LESS POWER AND DRAW LESS CURRENT. LIGHTING CIRCUITS WILL NOT BE OVERLOADED.
- H. FOR ALL RECESSED FIXTURES, VERIFY EXISTING PENETRATION DIMENSIONS PRIOR TO SUBMITTING.
- I. EC TO MATCH ALL EXISTING MOUNTING HEIGHTS FOR PENDANT, CHAIN, AND CABLE HUNG LIGHT FIXTURES IN SAME LOCATION.
- J. LIGHT FIXTURES WITHIN INDIVIDUAL ROOMS, TO INCLUDE CLASSROOMS, OFFICES, STORAGE AREAS, MECHANICAL ROOMS, ARE TO BE OPERATED BY LOCAL CONTROL ONLY. ALL HALLWAY AND LOBBY FIXTURES TO BE SET UP AS A PART OF A LIGHTING ZONE VIA WIRELESSLY CONNECTED GATEWAY.
- K. MECHANICAL ROOMS ARE NOT TO BE EQUIPPED WITH AUTOMATIC CONTROLS. OCCUPANCY SENSORS IN STORAGE CLOSETS ARE EXISTING TO REMAIN, AND FIXTURES OPERATED AS CONVENTIONAL FIXTURE.
- L. ALL STUDENT AREAS AND CLASS ROOMS WILL INCORPORATE SMART LIGHTING TECHNOLOGY THAT ALLOW S ALL FIXTURES IN A ROOM TO BE PROGRAMMED AS PART OF A STAND-ALONE WIRELESS MESH NETWORK GROUP. ALL SMART FIXTURES WILL INCLUDE AN ON-BOARD OCCUPANCY AND LIGHT LEVEL SENSOR, AND SETUP TO ENABLE OC SENSOR CONTROL.
- M. ALL CLASSROOMS AND STUDENT AREAS WILL BE EQUIPPED WITH WIRELESS WALL-SWITCH TYPE DIMMING CONTROLS AND INCLUDE ON/OFF OVERRIDE CONTROL. EXISTING LINE VOLTAGE WALL DIMMERS OR SWITCHES WILL BE DEMOED AND EXISTING SWITCH LEGS TO BE USED TO POWER NEW WALL DIMMER DEVICE. EXISTING OCCUPANCY SENSOR AND ANY CONNECTED POWER PACKS TO BE DEMOED AND POWER PACK LINE VOLTAGE INPUTS TO BE SPLICED TO LIGHTING SIDE OF POWER PACK. PLUG OR PATCH ANY REMAINING OPENING.



**A LIGHTING PLAN, 1'ST FLOOR, ZONE C**  
E103 1/8" = 1'-0"





5880 SAWMILL RD #200  
DUBLIN, OH 43017  
614-923-3930



30 W. SPRING ST., 4th FLOOR  
COLUMBUS, OH 43215



OHIO STATE  
SCHOOL FOR THE  
BLIND

5220 N HIGH ST,  
COLUMBUS, OHIO 43214

OFCC PROJECT NUMBER SFC-23N002

REV	DATE	RELEASED FOR
5/1/2025		BID ADDENDUM 1
4/7/2025		BID SET
3/17/2025		PERMIT SET
7/9/2024		50% SD / DD SUBMISSION

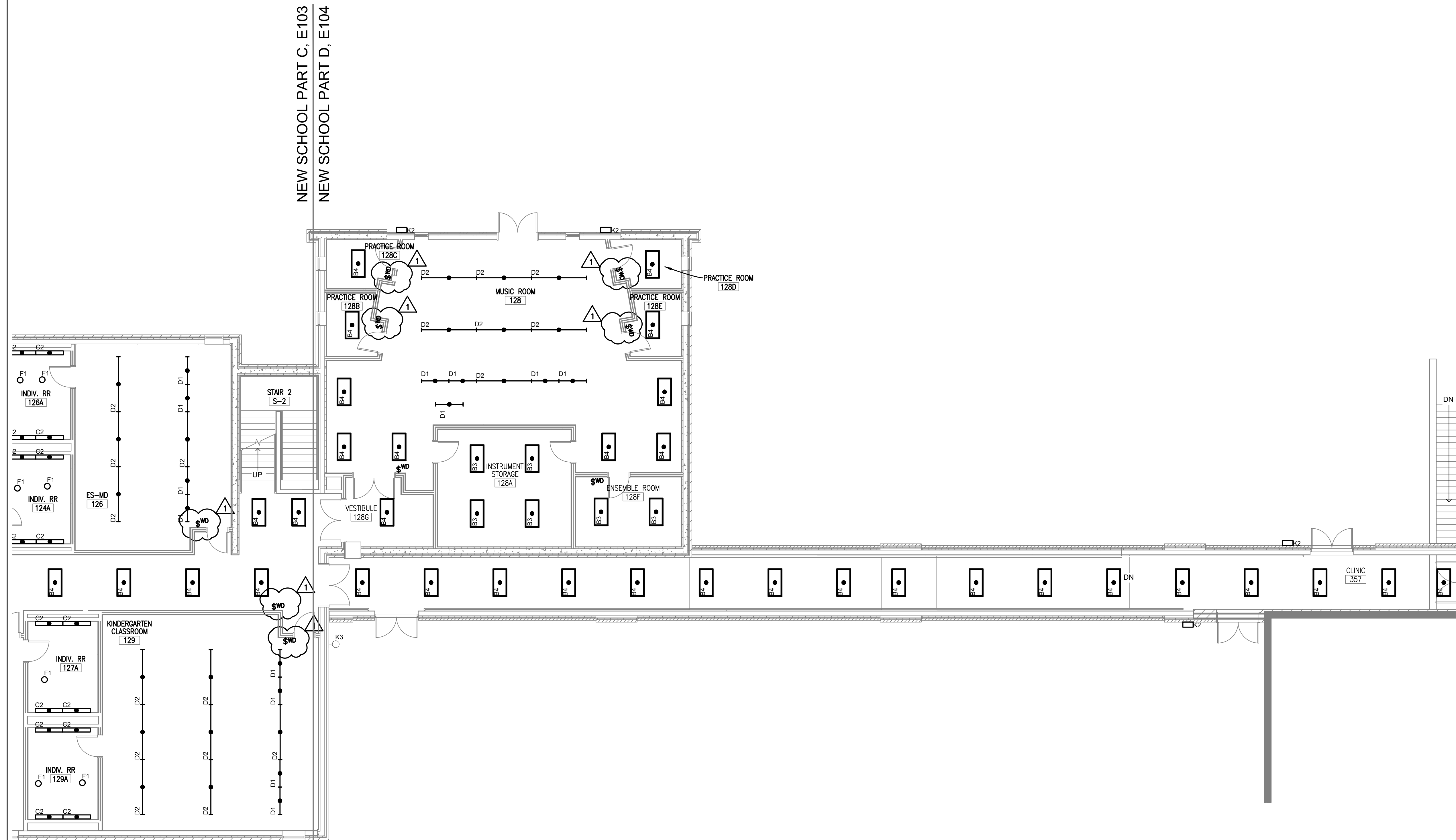
DESIGNED	MM	JOB NUMBER
DRAWN	TH <td>22070-01</td>	22070-01
CHECKED	MC <td>DATE 3/17/2025</td>	DATE 3/17/2025

LIGHTING PLAN,  
1'ST FLOOR,  
ZONE D

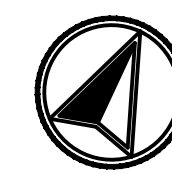
SHEET NUMBER  
**E104**

**DRAWING NOTES:**

- A. ELECTRICAL CONTRACTOR SHALL REPLACE EXISTING LIGHT FIXTURES AS IDENTIFIED IN PROJECT DRAWINGS WITH NEW LED LIGHT FIXTURE PER LIGHTING FIXTURE SCHEDULE ON SHEETS E201. ELECTRICAL CONTRACTOR SHALL REMOVE EXISTING LIGHT FIXTURE IN ITS ENTIRETY, UNLESS EXISTING LIGHT FIXTURE IS NOTED TO RECEIVE A RETROFIT KIT OR REPLACEMENT LAMPS. RECYCLE DEMO FIXTURES PROPERLY. CONFIRM WITH FACILITIES THE DISPOSITION OF REMOVED LIGHTING FIXTURES. ELECTRICAL CONTRACTOR SHALL DISCONNECT EXISTING POWER AND CONTROL WIRING FROM EXISTING LIGHT FIXTURE AND RECONNECT TO NEW LIGHT FIXTURE FOR A COMPLETE AND OPERABLE SYSTEM. EXISTING LIGHTING CONTROLS ARE TO REMAIN AND BE REUSED AS IS UNLESS NOTED OTHERWISE. VERIFY EXACT REQUIREMENTS IN FIELD PRIOR TO BID AND INCLUDE ALL COSTS IN BID.
- B. ALL EXISTING LIGHTING CONTROLS TO REMAIN AND BE REUSED UNLESS NOTED OTHERWISE.
- C. EXISTING DUAL BALLAST LIGHT FIXTURES, SPECIFICALLY THOSE WHERE CENTER AND OUTSIDE LAMPS ARE CONTROLLED INDEPENDENTLY VIA SEPARATE WALL SWITCHES, THE CONTRACTOR IS TO SPLICE TOGETHER THE TWO TRAVELERS AFTER VERIFYING THE TRAVELERS ARE POWERED FROM THE SAME CIRCUIT. NEXT, THE CONTRACTOR WILL DEMO ONE OF THE WALL SWITCHES, REPLACING THE SWITCH WITH STAINLESS BOX COVER.
- D. FOR SURFACE MOUNTED 1X4, 2X4, OR STRIP TYPE FIXTURES MOUNTED END TO END, VERIFY IF FIXTURES ARE WIRED SUCH THAT THE EXISTING FIXTURE IS USED AS A WIRE-WAY. FOR BIDDING PURPOSES, TAKE INTO ACCOUNT ADDITIONAL WORK AND MATERIALS TO PROVIDE AND INSTALL CONDUIT AND WIRING FOR REPLACEMENT LED FIXTURES NOT LISTED AS "AUTHORIZED FOR USE AS A WIRE-WAY", TO INCLUDE PROVIDING AND INSTALLING OPTIONAL SURFACE MOUNT KITS TO FACILITATE CONCEALING FLEX CABLE INSTALLATION WHERE NEEDED.
- E. ELECTRICAL CONTRACTOR SHALL NOT DISTURB, PENETRATE OR MODIFY EXISTING CEILINGS. ELECTRICAL CONTRACTOR SHALL VERIFY EXISTING PENETRATIONS AND PATHWAYS FOR A COMPLETE INSTALLATION.
- F. WIRE ALL EMERGENCY LIGHTING AHEAD OF ALL SWITCHING AND CONTROLS.
- G. CONNECT NEW LIGHT FIXTURES TO EXISTING CIRCUIT SERVING EXISTING LIGHT FIXTURE, BECAUSE NEW LED FIXTURE AND LAMPS ARE MORE ENERGY EFFICIENT THAN EXISTING FIXTURES, AND LUMEN OUTPUT BETWEEN OLD AND NEW FIXTURES IS MATCHED, ALL EXISTING LIGHTING CIRCUITS WILL CONSUME LESS POWER AND DRAW LESS CURRENT. LIGHTING CIRCUITS WILL NOT BE OVERLOADED.
- H. FOR ALL RECESSED FIXTURES, VERIFY EXISTING PENETRATION DIMENSIONS PRIOR TO SUBMITTING.
- I. EC TO MATCH ALL EXISTING MOUNTING HEIGHTS FOR PENDANT, CHAIN, AND CABLE HUNG LIGHT FIXTURES IN SAME LOCATION.
- J. LIGHT FIXTURES WITHIN INDIVIDUAL ROOMS, TO INCLUDE CLASSROOMS, OFFICES, STORAGE AREAS, MECHANICAL ROOMS, ARE TO BE OPERATED BY LOCAL CONTROL ONLY. ALL HALLWAY AND LOBBY FIXTURES TO BE SET UP AS A PART OF A LIGHTING ZONE VIA WIRELESSLY CONNECTED GATEWAY.
- K. MECHANICAL ROOMS ARE NOT TO BE EQUIPPED WITH AUTOMATIC CONTROLS. OCCUPANCY SENSORS IN STORAGE CLOSETS ARE EXISTING TO REMAIN, AND FIXTURES OPERATED AS CONVENTIONAL FIXTURE.
- L. ALL STUDENT AREAS AND CLASS ROOMS WILL INCORPORATE SMART LIGHTING TECHNOLOGY THAT ALLOW S ALL FIXTURES IN A ROOM TO BE PROGRAMMED AS PART OF A STAND-ALONE WIRELESS MESH NETWORK GROUP. ALL SMART FIXTURES WILL INCLUDE AN ON-BOARD OCCUPANCY AND LIGHT LEVEL SENSOR, AND SETUP TO ENABLE OC SENSOR CONTROL.
- M. ALL CLASSROOMS AND STUDENT AREAS WILL BE EQUIPPED WITH WIRELESS WALL-SWITCH TYPE DIMMING CONTROLS AND INCLUDE ON/OFF OVERRIDE CONTROL. EXISTING LINE VOLTAGE WALL DIMMERS OR SWITCHES WILL BE DEMOED AND EXISTING SWITCH LEGS TO BE USED TO POWER NEW WALL DIMMER DEVICE. EXISTING OCCUPANCY SENSOR AND ANY CONNECTED POWER PACKS TO BE DEMOED AND POWER PACK LINE VOLTAGE INPUTS TO BE SPLICED TO LIGHTING SIDE OF POWER PACK. PLUG OR PATCH ANY REMAINING OPENING.

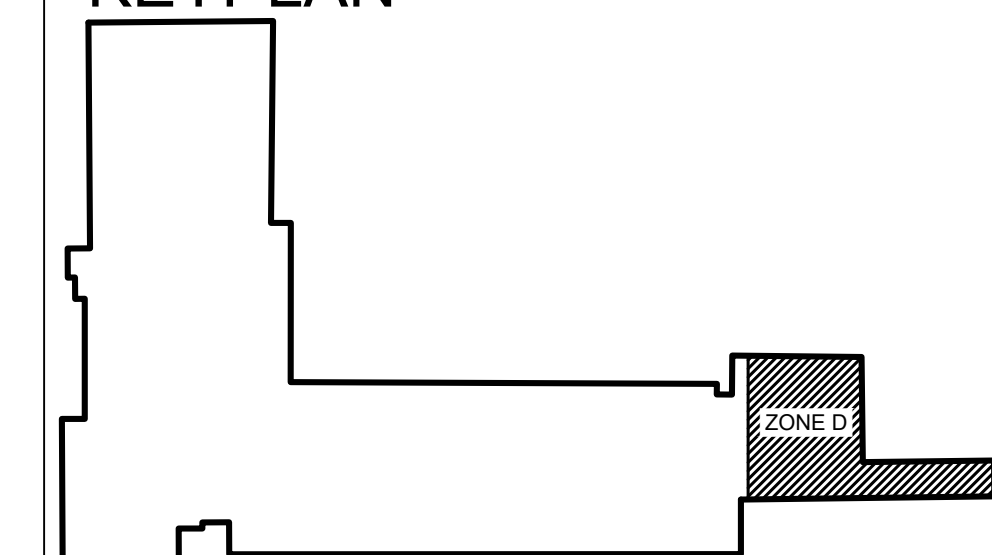


**A LIGHTING PLAN, 1'ST FLOOR, ZONE D**  
E104 1/8" = 1'-0"



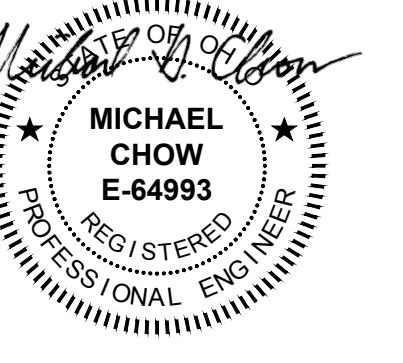
SCALE: 1/8" = 1'  
0 4 8 16

**KEYPLAN**









**OHIO STATE  
SCHOOL FOR THE  
BLIND**

5220 N HIGH ST.  
COLUMBUS, OHIO 43214

OFCC PROJECT NUMBER SFC-23N002

REV	DATE	RELEASED FOR
5/1/2025		BID ADDENDUM 1
4/7/2025		BID SET
3/17/2025		PERMIT SET
7/9/2024		50% SD / DD SUBMISSION

DESIGNED	MM	JOB NUMBER
DRAWN	TH <td>22070-01</td>	22070-01
CHECKED	MC <td>DATE 3/17/2025</td>	DATE 3/17/2025

**LIGHTING PLAN,  
OLD SCHOOL  
FIRST FLOOR  
ZONE A**

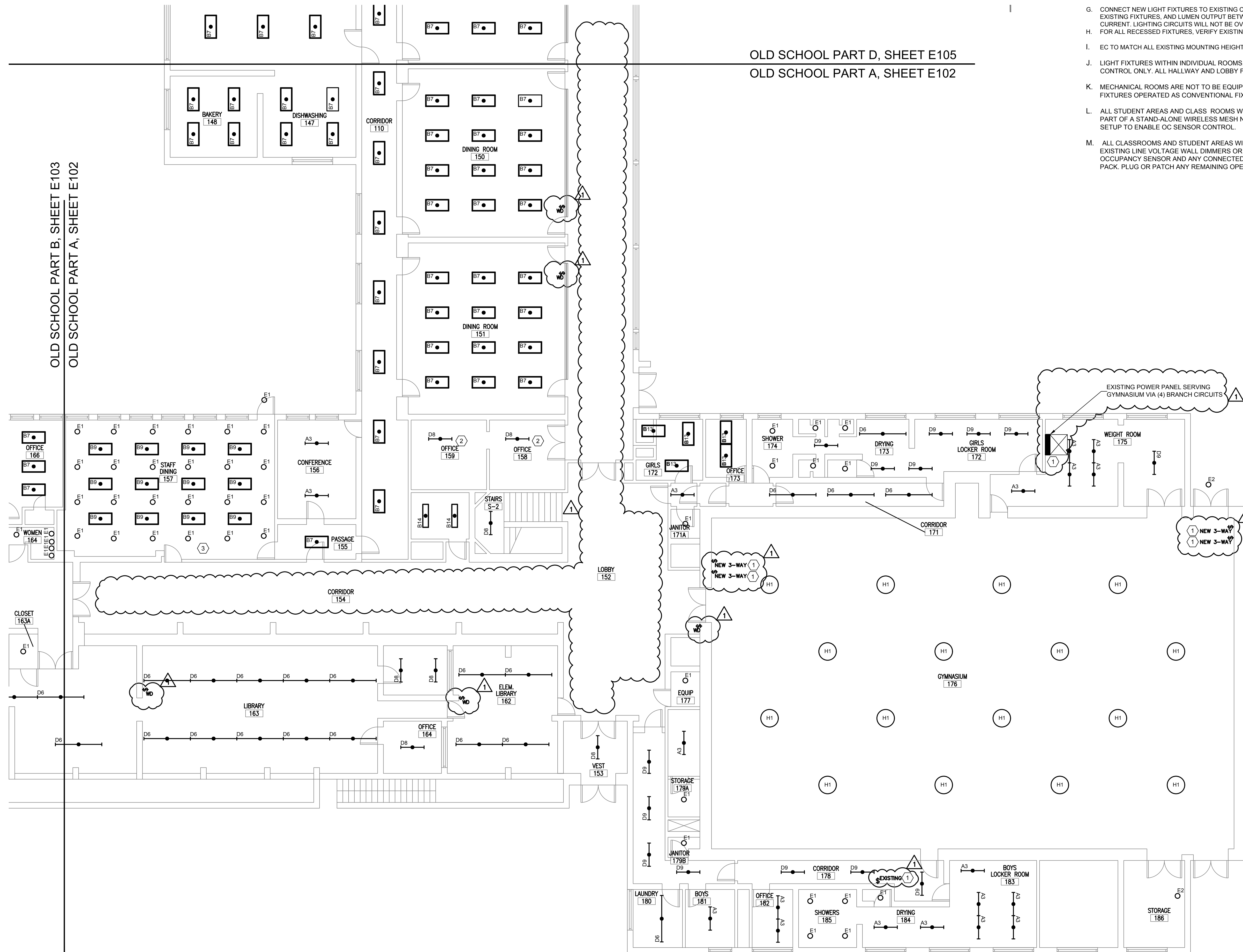
SHEET NUMBER  
**E102**

**DRAWING NOTES:**

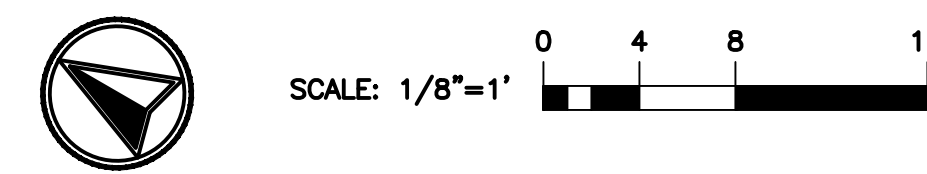
- A. ELECTRICAL CONTRACTOR SHALL REPLACE EXISTING LIGHT FIXTURES AS IDENTIFIED IN PROJECT DRAWINGS WITH NEW LED LIGHT FIXTURE PER LIGHTING FIXTURE SCHEDULE ON SHEETS E201. ELECTRICAL CONTRACTOR SHALL REMOVE EXISTING LIGHT FIXTURE IN ITS ENTIRETY, UNLESS EXISTING LIGHT FIXTURE IS NOTED TO RECEIVE A RETROFIT KIT OR REPLACEMENT LAMPS. RECYCLE DEMO FIXTURES PROPERLY. CONFIRM WITH FACILITIES THE DISPOSITION OF REMOVED LIGHTING FIXTURES. ELECTRICAL CONTRACTOR SHALL DISCONNECT EXISTING POWER AND CONTROL WIRING FROM EXISTING LIGHT FIXTURE AND RECONNECT TO NEW LIGHT FIXTURE FOR A COMPLETE AND OPERABLE SYSTEM. EXISTING LIGHTING CONTROLS ARE TO REMAIN AND BE REUSED AS IS UNLESS NOTED OTHERWISE. VERIFY EXACT REQUIREMENTS IN FIELD PRIOR TO BID AND INCLUDE ALL COSTS IN BID.
- B. ALL EXISTING LIGHTING CONTROLS TO REMAIN AND BE REUSED UNLESS NOTED OTHERWISE.
- C. EXISTING DUAL BALLAST LIGHT FIXTURES, SPECIFICALLY THOSE WHERE CENTER AND OUTSIDE LAMPS ARE CONTROLLED INDEPENDENTLY VIA SEPARATE WALL SWITCHES, THE CONTRACTOR IS TO SPLICE TOGETHER THE TWO TRAVELERS AFTER VERIFYING THE TRAVELERS ARE POWERED FROM THE SAME CIRCUIT. NEXT, THE CONTRACTOR WILL DEMO ONE OF THE WALL SWITCHES, REPLACING THE SWITCH WITH STAINLESS BOX COVER.
- D. FOR SURFACE MOUNTED 1X4, 2X4, OR STRIP TYPE FIXTURES MOUNTED END TO END, VERIFY IF FIXTURES ARE WIRED SUCH THAT THE EXISTING FIXTURE IS USED AS A WIRE-WAY. FOR BIDDING PURPOSES, TAKE INTO ACCOUNT ADDITIONAL WORK AND MATERIALS TO PROVIDE AND INSTALL CONDUIT AND WIRING FOR REPLACEMENT LED FIXTURES NOT LISTED AS "AUTHORIZED FOR USE AS A WIRE-WAY". TO INCLUDE PROVIDING AND INSTALLING OPTIONAL SURFACE MOUNT KITS TO FACILITATE CONCEALING FLEX CABLE INSTALLATION WHERE NEEDED.
- E. ELECTRICAL CONTRACTOR SHALL NOT DISTURB, PENETRATE OR MODIFY EXISTING CEILING. ELECTRICAL CONTRACTOR SHALL VERIFY EXISTING PENETRATIONS AND PATHWAYS FOR A COMPLETE INSTALLATION.
- F. WIRE ALL EMERGENCY LIGHTING AHEAD OF ALL SWITCHING AND CONTROLS.
- G. CONNECT NEW LIGHT FIXTURES TO EXISTING CIRCUIT SERVING EXISTING LIGHT FIXTURE, BECAUSE NEW LED FIXTURE AND LAMPS ARE MORE ENERGY EFFICIENT THAN EXISTING FIXTURES, AND LUMEN OUTPUT BETWEEN OLD AND NEW FIXTURES IS MATCHED, ALL EXISTING LIGHTING CIRCUITS WILL CONSUME LESS POWER AND DRAW LESS CURRENT. LIGHTING CIRCUITS WILL NOT BE OVERLOADED.
- H. FOR ALL RECESSED FIXTURES, VERIFY EXISTING PENETRATION DIMENSIONS PRIOR TO SUBMITTING.
- I. EC TO MATCH ALL EXISTING MOUNTING HEIGHTS FOR PENDANT, CHAIN, AND CABLE HUNG LIGHT FIXTURES IN SAME LOCATION.
- J. LIGHT FIXTURES WITHIN INDIVIDUAL ROOMS, TO INCLUDE CLASSROOMS, OFFICES, STORAGE AREAS, MECHANICAL ROOMS, ARE TO BE OPERATED BY LOCAL CONTROL ONLY. ALL HALLWAY AND LOBBY FIXTURES TO BE SET UP AS A PART OF A LIGHTING ZONE VIA WIRELESSLY CONNECTED GATEWAY.
- K. MECHANICAL ROOMS ARE NOT TO BE EQUIPPED WITH AUTOMATIC CONTROLS. OCCUPANCY SENSORS IN STORAGE CLOSETS ARE EXISTING TO REMAIN, AND FIXTURES OPERATED AS CONVENTIONAL FIXTURE.
- L. ALL STUDENT AREAS AND CLASS ROOMS WILL INCORPORATE SMART LIGHTING TECHNOLOGY THAT ALLOW S ALL FIXTURES IN A ROOM TO BE PROGRAMMED AS PART OF A STAND-ALONE WIRELESS MESH NETWORK GROUP. ALL SMART FIXTURES WILL INCLUDE AN ON-BOARD OCCUPANCY AND LIGHT LEVEL SENSOR, AND SETUP TO ENABLE OC SENSOR CONTROL.
- M. ALL CLASSROOMS AND STUDENT AREAS WILL BE EQUIPPED WITH WIRELESS WALL-SWITCH TYPE DIMMING CONTROLS AND INCLUDE ON/OFF OVERRIDE CONTROL. EXISTING LINE VOLTAGE WALL DIMMERS OR SWITCHES WILL BE DEMOED AND EXISTING SWITCH LEGS TO BE USED TO POWER NEW WALL DIMMER DEVICE. EXISTING OCCUPANCY SENSOR AND ANY CONNECTED POWER PACKS TO BE DEMOED AND POWER PACK LINE VOLTAGE INPUTS TO BE SPLICED TO LIGHTING SIDE OF POWER PACK. PLUG OR PATCH ANY REMAINING OPENINGS

CODED NOTES	
1	REVISE GYMNASIUM SWITCHING: DEMO EXISTING TOGGLE TYPE WALL SWITCH, EXTEND NEUTRAL, HOT & TRAVELER TO NEW SWITCH LOCATION CONTROLLING FRONT HALF OF GYM. PROVIDE BRANCH CIRCUIT CONDUCTORS AND CONDUIT FROM EXISTING POWER PANEL TO NEW SWITCH LOCATION SERVING REAR HALF OF GYMNASIUM. PROVIDE NEW TOGGLE TYPE WALL SWITCHES PER SYMBOL LEGEND. PROVIDE CONDUIT & CONDUCTOR FROM SWITCH TO REAR GYMNASIUM LIGHT FIXTURES.
2	FIXTURES HAVE CENTER BASKET BLACK LIGHT TUBE PRIOR TO REPLACEMENT. CONFIRM WITH FACILITIES ANY SPECIFIC LIGHTING REQUIREMENTS.
3	DEMO EXISTING DIMMER SWITCHES. PROVIDE AND INSTALL NEW WIRELESS MESH ENABLED DIMMING SWITCHES. USE EXISTING SWITCH LEG TO POWER NEW DIMMER.

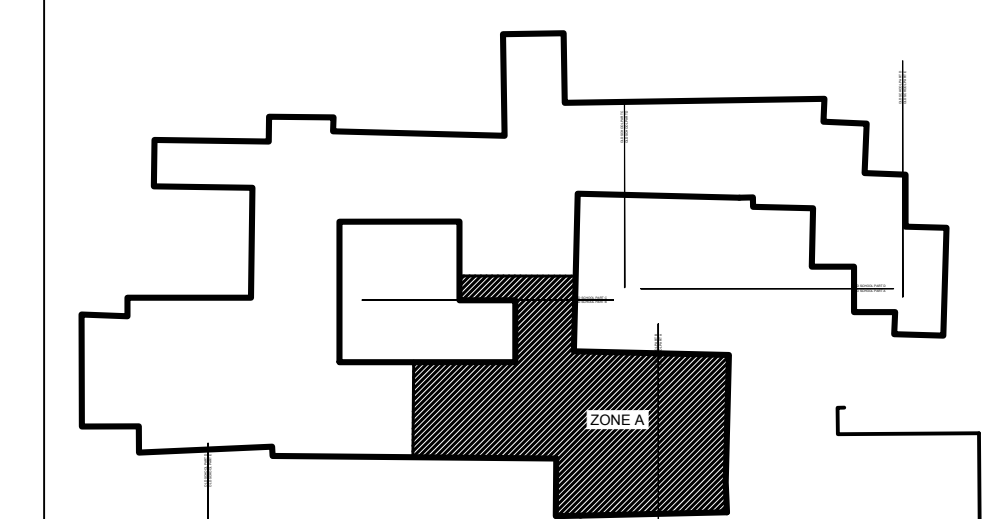
OLD SCHOOL PART D, SHEET E105  
OLD SCHOOL PART A, SHEET E102



**A LIGHTING PLAN, OLD SCHOOL FIRST FLOOR ZONE A**  
E102 1/8" = 1'-0"



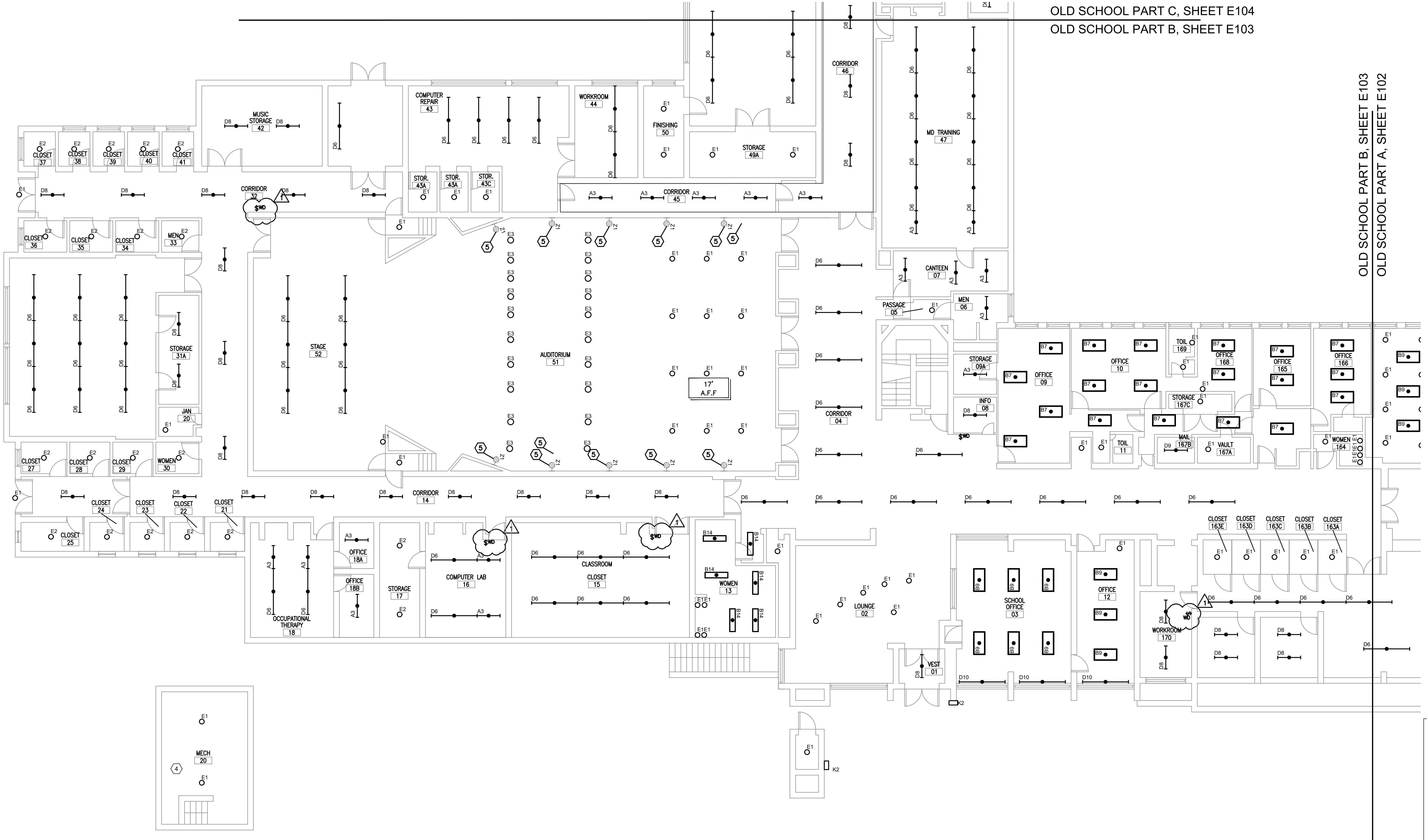
**KEYPLAN**



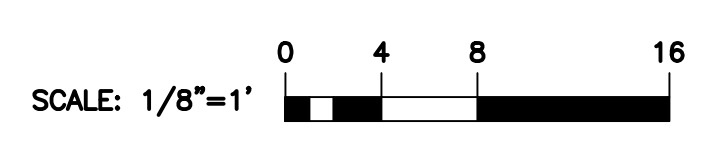
CODED NOTES	
1	NOT USED
2	NOT USED
3	NOT USED
4	SECOND FLOOR AREA CONTAINING MECHANICAL EQUIPMENT. ACCESS THROUGH JANITOR CLOSET, ROOM 20.
5	NO EXISTING FIXTURE. PROVIDE WALL SCONCE LIGHTING MINIMUM 7' AFF. PROVIDE FIXTURE CONDUIT AND CONDUCTOR. WIRE TO SAME CIRCUIT AS EXISTING ROOM LIGHTING. PROVIDE 0-10V DIMMING SWITCH. COORDINATE SWITCH LOCATION WITH O&M.

- DRAWING NOTES:**
- A. ELECTRICAL CONTRACTOR SHALL REPLACE EXISTING LIGHT FIXTURES AS IDENTIFIED IN PROJECT DRAWINGS WITH NEW LED LIGHT FIXTURE PER LIGHTING FIXTURE SCHEDULE ON SHEETS E201. ELECTRICAL CONTRACTOR SHALL REMOVE EXISTING LIGHT FIXTURE IN ITS ENTIRETY, UNLESS EXISTING LIGHT FIXTURE IS NOTED TO RECEIVE A RETROFIT KIT OR REPLACEMENT LAMPS. RECYCLE DEMO FIXTURES PROPERLY. CONFIRM WITH FACILITIES THE DISPOSITION OF REMOVED LIGHTING FIXTURES. ELECTRICAL CONTRACTOR SHALL DISCONNECT EXISTING POWER AND CONTROL WIRING FROM EXISTING LIGHT FIXTURE AND RECONNECT TO NEW LIGHT FIXTURE FOR A COMPLETE AND OPERABLE SYSTEM. EXISTING LIGHTING CONTROLS ARE TO REMAIN AND BE REUSED AS IS UNLESS NOTED OTHERWISE. VERIFY EXACT REQUIREMENTS IN FIELD PRIOR TO BID AND INCLUDE ALL COSTS IN BID.
  - B. ALL EXISTING LIGHTING CONTROLS TO REMAIN AND BE REUSED UNLESS NOTED OTHERWISE.
  - C. EXISTING DUAL BALLAST LIGHT FIXTURES, SPECIFICALLY THOSE WHERE CENTER AND OUTSIDE LAMPS ARE CONTROLLED INDEPENDENTLY VIA SEPARATE WALL SWITCHES, THE CONTRACTOR IS TO SPLICE TOGETHER THE TWO TRAVELERS AFTER VERIFYING THE TRAVELERS ARE POWERED FROM THE SAME CIRCUIT. NEXT, THE CONTRACTOR WILL DEMO ONE OF THE WALL SWITCHES, REPLACING THE SWITCH WITH STAINLESS BOX COVER.
  - D. FOR SURFACE MOUNTED 1X4, 2X4, OR STRIP TYPE FIXTURES MOUNTED END TO END, VERIFY IF FIXTURES ARE WIRED SUCH THAT THE EXISTING FIXTURE IS USED AS A WIRE-WAY. FOR BIDDING PURPOSES, TAKE INTO ACCOUNT ADDITIONAL WORK AND MATERIALS TO PROVIDE AND INSTALL CONDUIT AND WIRING FOR REPLACEMENT LED FIXTURES NOT LISTED AS "AUTHORIZED FOR USE AS A WIRE-WAY". TO INCLUDE PROVIDING AND INSTALLING OPTIONAL SURFACE MOUNT KITS TO FACILITATE CONCEALING FLEX CABLE INSTALLATION WHERE NEEDED.
  - E. ELECTRICAL CONTRACTOR SHALL NOT DISTURB, PENETRATE OR MODIFY EXISTING CEILINGS. ELECTRICAL CONTRACTOR SHALL VERIFY EXISTING PENETRATIONS AND PATHWAYS FOR A COMPLETE INSTALLATION.
  - F. WIRE ALL EMERGENCY LIGHTING AHEAD OF ALL SWITCHING AND CONTROLS.
  - G. CONNECT NEW LIGHT FIXTURES TO EXISTING CIRCUIT SERVING EXISTING LIGHT FIXTURE, BECAUSE NEW LED FIXTURE AND LAMPS ARE MORE ENERGY EFFICIENT THAN EXISTING FIXTURES, AND LUMEN OUTPUT BETWEEN OLD AND NEW FIXTURES IS MATCHED, ALL EXISTING LIGHTING CIRCUITS WILL CONSUME LESS POWER AND DRAW LESS CURRENT. LIGHTING CIRCUITS WILL NOT BE OVERLOADED.
  - H. FOR ALL RECESSED FIXTURES, VERIFY EXISTING PENETRATION DIMENSIONS PRIOR TO SUBMITTING.
  - I. EC TO MATCH ALL EXISTING MOUNTING HEIGHTS FOR PENDANT, CHAIN, AND CABLE HUNG LIGHT FIXTURES IN SAME LOCATION.
  - J. LIGHT FIXTURES WITHIN INDIVIDUAL ROOMS, TO INCLUDE CLASSROOMS, OFFICES, STORAGE AREAS, MECHANICAL ROOMS, ARE TO BE OPERATED BY LOCAL CONTROL ONLY. ALL HALLWAY AND LOBBY FIXTURES TO BE SET UP AS A PART OF A LIGHTING ZONE VIA WIRELESSLY CONNECTED GATEWAY.
  - K. MECHANICAL ROOMS ARE NOT TO BE EQUIPPED WITH AUTOMATIC CONTROLS. OCCUPANCY SENSORS IN STORAGE CLOSETS ARE EXISTING TO REMAIN, AND FIXTURES OPERATED AS CONVENTIONAL FIXTURE.
  - L. ALL STUDENT AREAS AND CLASS ROOMS WILL INCORPORATE SMART LIGHTING TECHNOLOGY THAT ALLOW S ALL FIXTURES IN A ROOM TO BE PROGRAMMED AS PART OF A STAND-ALONE WIRELESS MESH NETWORK GROUP. ALL SMART FIXTURES WILL INCLUDE AN ON-BOARD OCCUPANCY AND LIGHT LEVEL SENSOR, AND SETUP TO ENABLE OCC SENSOR CONTROL.
  - M. ALL CLASSROOMS AND STUDENT AREAS WILL BE EQUIPPED WITH WIRELESS WALL-SWITCH TYPE DIMMING CONTROLS AND INCLUDE ON/OFF OVERRIDE CONTROL. EXISTING LINE VOLTAGE WALL DIMMERS OR SWITCHES WILL BE DEMOED AND EXISTING SWITCH LEGS TO BE USED TO POWER NEW WALL DIMMER DEVICE. EXISTING OCCUPANCY SENSOR AND ANY CONNECTED POWER PACKS TO BE DEMOED AND POWER PACK LINE VOLTAGE INPUTS TO BE SPLICED TO LIGHTING SIDE OF POWER PACK. PLUG OR PATCH ANY REMAINING OPENINGS.

OLD SCHOOL PART C, SHEET E104  
 OLD SCHOOL PART B, SHEET E103



**A LIGHTING PLAN, OLD SCHOOL FIRST FLOOR ZONE B**  
**E103**  
 1/8" = 1'-0"



metro cd engineering  
 5880 SAWMILL RD #200  
 DUBLIN, OH 43017  
 614-923-3930

Ohio Facilities Construction Commission  
 30 W. SPRING ST., 4th FLOOR  
 COLUMBUS, OH 43215



OHIO STATE SCHOOL FOR THE BLIND  
 5220 N HIGH ST.  
 COLUMBUS, OHIO 43214

OFCC PROJECT NUMBER SFC-23N002

REV	DATE	RELEASED FOR
5/1/2025		BID ADDENDUM 1
4/7/2025		BID SET
3/17/2025		PERMIT SET
7/9/2024		50% SD / DD SUBMISSION

DESIGNED	MM	JOB NUMBER	22070-01
DRAWN	TH	DATE	3/17/2025
CHECKED	MC		

SHEET TITLE  
**LIGHTING PLAN, OLD SCHOOL FIRST FLOOR ZONE B**

SHEET NUMBER  
**E103**



5880 SAWMILL RD #200  
DUBLIN, OH 43017  
614-923-3930



30 W. SPRING ST., 4th FLOOR  
COLUMBUS, OH 43215



OHIO STATE  
SCHOOL FOR THE  
BLIND

5220 N HIGH ST,  
COLUMBUS, OHIO 43214

OFCC PROJECT NUMBER SFC-23N002

REV	DATE	RELEASED FOR
5/1/2025		BID ADDENDUM 1
4/7/2025		BID SET
3/17/2025		PERMIT SET
7/9/2024		50% SD / DD SUBMISSION

DESIGNED	MM	JOB NUMBER
DRAWN	TH <td>22070-01</td>	22070-01
CHECKED	MC <td>DATE</td>	DATE
		3/17/2025

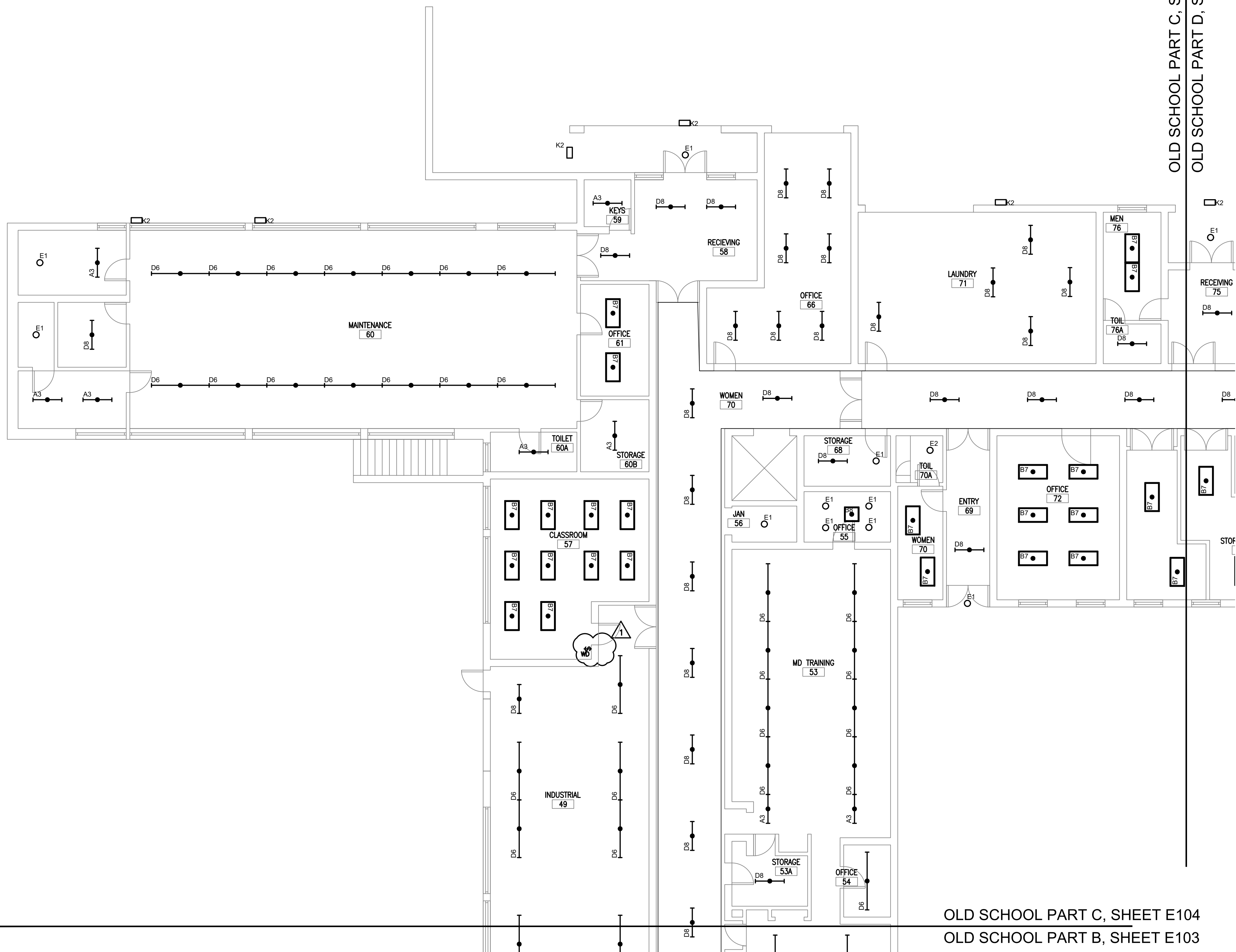
SHEET TITLE  
**LIGHTING PLAN,  
OLD SCHOOL  
FIRST FLOOR  
ZONE C**

SHEET NUMBER  
**E104**

**DRAWING NOTES:**

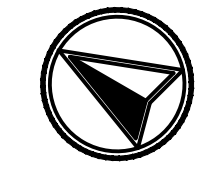
- A. ELECTRICAL CONTRACTOR SHALL REPLACE EXISTING LIGHT FIXTURES AS IDENTIFIED IN PROJECT DRAWINGS WITH NEW LED LIGHT FIXTURE PER LIGHTING FIXTURE SCHEDULE ON SHEETS E201. ELECTRICAL CONTRACTOR SHALL REMOVE EXISTING LIGHT FIXTURE IN ITS ENTIRETY, UNLESS EXISTING LIGHT FIXTURE IS NOTED TO RECEIVE A RETROFIT KIT OR REPLACEMENT LAMPS. RECYCLE DEMO FIXTURES PROPERLY. CONFIRM WITH FACILITIES THE DISPOSITION OF REMOVED LIGHTING FIXTURES. ELECTRICAL CONTRACTOR SHALL DISCONNECT EXISTING POWER AND CONTROL WIRING FROM EXISTING LIGHT FIXTURE AND RECONNECT TO NEW LIGHT FIXTURE FOR A COMPLETE AND OPERABLE SYSTEM. EXISTING LIGHTING CONTROLS ARE TO REMAIN AND BE REUSED AS IS UNLESS NOTED OTHERWISE. VERIFY EXACT REQUIREMENTS IN FIELD PRIOR TO BID AND INCLUDE ALL COSTS IN BID.
- B. ALL EXISTING LIGHTING CONTROLS TO REMAIN AND BE REUSED UNLESS NOTED OTHERWISE.
- C. EXISTING DUAL BALLAST LIGHT FIXTURES, SPECIFICALLY THOSE WHERE CENTER AND OUTSIDE LAMPS ARE CONTROLLED INDEPENDENTLY VIA SEPARATE WALL SWITCHES, THE CONTRACTOR IS TO SPLICE TOGETHER THE TWO TRAVELERS AFTER VERIFYING THE TRAVELERS ARE POWERED FROM THE SAME CIRCUIT. NEXT, THE CONTRACTOR WILL DEMO ONE OF THE WALL SWITCHES, REPLACING THE SWITCH WITH STAINLESS BOX COVER.
- D. FOR SURFACE MOUNTED 1X4, 2X4, OR STRIP TYPE FIXTURES MOUNTED END TO END, VERIFY IF FIXTURES ARE WIRED SUCH THAT THE EXISTING FIXTURE IS USED AS A WIRE-WAY. FOR BIDDING PURPOSES, TAKE INTO ACCOUNT ADDITIONAL WORK AND MATERIALS TO PROVIDE AND INSTALL CONDUIT AND WIRING FOR REPLACEMENT LED FIXTURES NOT LISTED AS "AUTHORIZED FOR USE AS A WIRE-WAY". TO INCLUDE PROVIDING AND INSTALLING OPTIONAL SURFACE MOUNT KITS TO FACILITATE CONCEALING FLEX CABLE INSTALLATION WHERE NEEDED.
- E. ELECTRICAL CONTRACTOR SHALL NOT DISTURB, PENETRATE OR MODIFY EXISTING CEILINGS. ELECTRICAL CONTRACTOR SHALL VERIFY EXISTING PENETRATIONS AND PATHWAYS FOR A COMPLETE INSTALLATION.
- F. WIRE ALL EMERGENCY LIGHTING AHEAD OF ALL SWITCHING AND CONTROLS.
- G. CONNECT NEW LIGHT FIXTURES TO EXISTING CIRCUIT SERVING EXISTING LIGHT FIXTURE, BECAUSE NEW LED FIXTURE AND LAMPS ARE MORE ENERGY EFFICIENT THAN EXISTING FIXTURES, AND LUMEN OUTPUT BETWEEN OLD AND NEW FIXTURES IS MATCHED, ALL EXISTING LIGHTING CIRCUITS WILL CONSUME LESS POWER AND DRAW LESS CURRENT. LIGHTING CIRCUITS WILL NOT BE OVERLOADED.
- H. FOR ALL RECESSED FIXTURES, VERIFY EXISTING PENETRATION DIMENSIONS PRIOR TO SUBMITTING.
- I. EC TO MATCH ALL EXISTING MOUNTING HEIGHTS FOR PENDANT, CHAIN, AND CABLE HUNG LIGHT FIXTURES IN SAME LOCATION.
- J. LIGHT FIXTURES WITHIN INDIVIDUAL ROOMS, TO INCLUDE CLASSROOMS, OFFICES, STORAGE AREAS, MECHANICAL ROOMS, ARE TO BE OPERATED BY LOCAL CONTROL ONLY. ALL HALLWAY AND LOBBY FIXTURES TO BE SET UP AS A PART OF A LIGHTING ZONE VIA WIRELESSLY CONNECTED GATEWAY.
- K. MECHANICAL ROOMS ARE NOT TO BE EQUIPPED WITH AUTOMATIC CONTROLS. OCCUPANCY SENSORS IN STORAGE CLOSETS ARE EXISTING TO REMAIN, AND FIXTURES OPERATED AS CONVENTIONAL FIXTURE.
- L. ALL STUDENT AREAS AND CLASS ROOMS WILL INCORPORATE SMART LIGHTING TECHNOLOGY THAT ALLOW S ALL FIXTURES IN A ROOM TO BE PROGRAMMED AS PART OF A STAND-ALONE WIRELESS MESH NETWORK GROUP. ALL SMART FIXTURES WILL INCLUDE AN ON-BOARD OCCUPANCY AND LIGHT LEVEL SENSOR, AND SETUP TO ENABLE OC SENSOR CONTROL.
- M. ALL CLASSROOMS AND STUDENT AREAS WILL BE EQUIPPED WITH WIRELESS WALL-SWITCH TYPE DIMMING CONTROLS AND INCLUDE ON/OFF OVERRIDE CONTROL. EXISTING LINE VOLTAGE WALL DIMMERS OR SWITCHES WILL BE DEMOED AND EXISTING SWITCH LEGS TO BE USED TO POWER NEW WALL DIMMER DEVICE. EXISTING OCCUPANCY SENSOR AND ANY CONNECTED POWER PACKS TO BE DEMOED AND POWER PACK LINE VOLTAGE INPUTS TO BE SPLICED TO LIGHTING SIDE OF POWER PACK. PLUG OR PATCH ANY REMAINING OPENINGS

OLD SCHOOL PART C, SHEET E104  
OLD SCHOOL PART D, SHEET E105



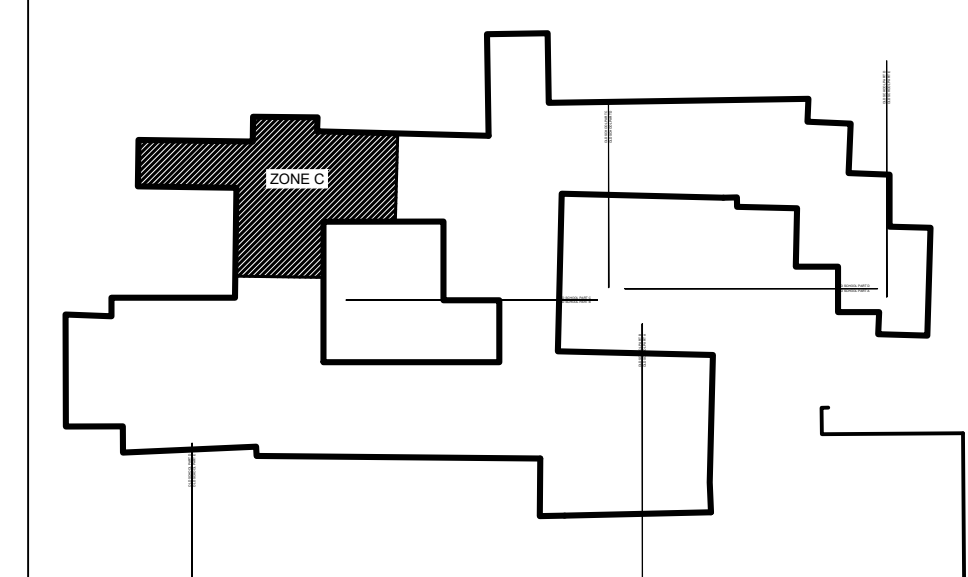
OLD SCHOOL PART C, SHEET E104  
OLD SCHOOL PART B, SHEET E103

**A**  
**E104** LIGHTING PLAN, OLD SCHOOL FIRST FLOOR ZONE C  
1/8" = 1'-0"



SCALE: 1/8"=1'  
0 4 8 16

**KEYPLAN**

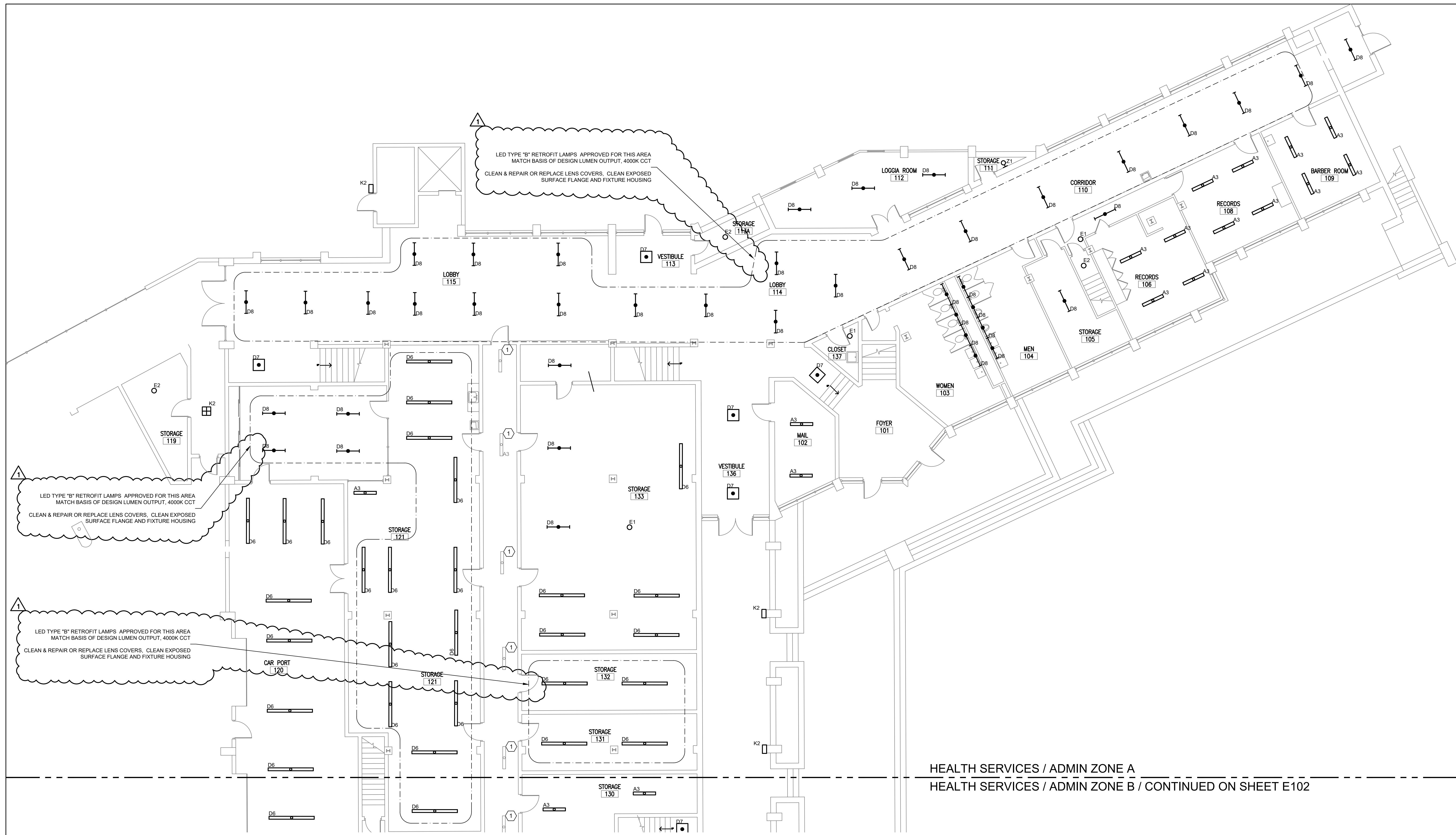


SHEET NUMBER  
**E104**

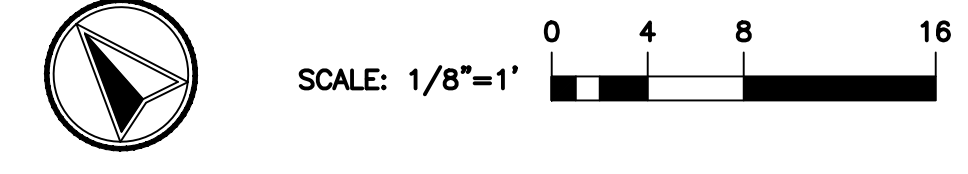








**A** LIGHTING PLAN, HEALTH SERVICES / ADMIN FIRST FLOOR ZONE A  
**E103** 1/8" = 1'-0"



LED TYPE "B" RETROFIT LAMPS APPROVED FOR THIS AREA  
 MATCH BASIS OF DESIGN LUMEN OUTPUT, 4000K CCT  
 CLEAN & REPAIR OR REPLACE LENS COVERS, CLEAN EXPOSED  
 SURFACE FLANGE AND FIXTURE HOUSING

LED TYPE "B" RETROFIT LAMPS APPROVED FOR THIS AREA  
 MATCH BASIS OF DESIGN LUMEN OUTPUT, 4000K CCT  
 CLEAN & REPAIR OR REPLACE LENS COVERS, CLEAN EXPOSED  
 SURFACE FLANGE AND FIXTURE HOUSING

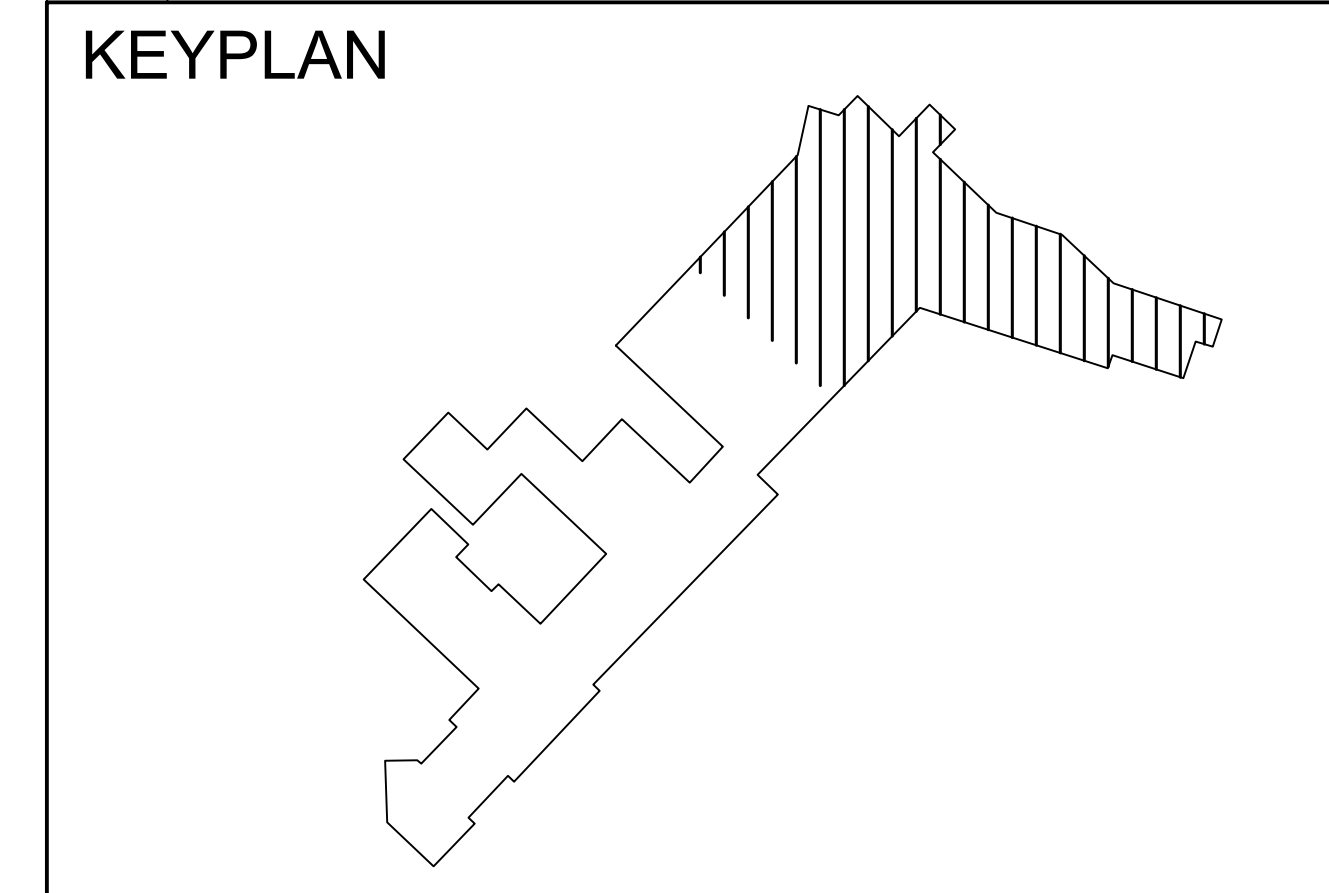
LED TYPE "B" RETROFIT LAMPS APPROVED FOR THIS AREA  
 MATCH BASIS OF DESIGN LUMEN OUTPUT, 4000K CCT  
 CLEAN & REPAIR OR REPLACE LENS COVERS, CLEAN EXPOSED  
 SURFACE FLANGE AND FIXTURE HOUSING

HEALTH SERVICES / ADMIN ZONE A  
 HEALTH SERVICES / ADMIN ZONE B / CONTINUED ON SHEET E102

**DRAWING NOTES:**

- A. ELECTRICAL CONTRACTOR SHALL REPLACE EXISTING LIGHT FIXTURES AS IDENTIFIED IN PROJECT DRAWINGS WITH NEW LED LIGHT FIXTURE PER LIGHTING FIXTURE SCHEDULE ON SHEETS E201. ELECTRICAL CONTRACTOR SHALL REMOVE EXISTING LIGHT FIXTURE IN ITS ENTIRETY, UNLESS EXISTING LIGHT FIXTURE IS NOTED TO RECEIVE A RETROFIT KIT OR REPLACEMENT LAMPS, RECYCLE DEMO FIXTURES PROPERLY. CONFIRM WITH FACILITIES THE DISPOSITION OF REMOVED LIGHTING FIXTURES. ELECTRICAL CONTRACTOR SHALL DISCONNECT EXISTING POWER AND CONTROL WIRING FROM EXISTING LIGHT FIXTURE AND RECONNECT TO NEW LIGHT FIXTURE FOR A COMPLETE AND OPERABLE SYSTEM. EXISTING LIGHTING CONTROLS ARE TO REMAIN AND BE REUSED AS IS UNLESS NOTED OTHERWISE. VERIFY EXACT REQUIREMENTS IN FIELD PRIOR TO BID AND INCLUDE ALL COSTS IN BID.
- B. ALL EXISTING LIGHTING CONTROLS TO REMAIN AND BE REUSED UNLESS NOTED OTHERWISE.
- C. EXISTING DUAL BALLAST LIGHT FIXTURES, SPECIFICALLY THOSE WHERE CENTER AND OUTSIDE LAMPS ARE CONTROLLED INDEPENDENTLY VIA SEPARATE WALL SWITCHES, THE CONTRACTOR IS TO SPLICE TOGETHER THE TWO TRAVELERS AFTER VERIFYING THE TRAVELERS ARE POWERED FROM THE SAME CIRCUIT. NEXT, THE CONTRACTOR WILL DEMO ONE OF THE WALL SWITCHES, REPLACING THE SWITCH WITH STAINLESS BOX COVER.
- D. FOR SURFACE MOUNTED 1x4, 2x4, OR STRIP TYPE FIXTURES MOUNTED END TO END, VERIFY IF FIXTURES ARE WIRED SUCH THAT THE EXISTING FIXTURE IS USED AS A WIRE-WAY. FOR BIDDING PURPOSES, TAKE INTO ACCOUNT ADDITIONAL WORK AND MATERIALS TO PROVIDE AND INSTALL CONDUIT AND WIRING FOR REPLACEMENT LED FIXTURES NOT LISTED AS "AUTHORIZED FOR USE AS A WIRE-WAY". TO INCLUDE PROVIDING AND INSTALLING OPTIONAL SURFACE MOUNT KITS TO FACILITATE CONCEALING FLEX CABLE INSTALLATION WHERE NEEDED.
- E. ELECTRICAL CONTRACTOR SHALL NOT DISTURB, PENETRATE OR MODIFY EXISTING CEILINGS. ELECTRICAL CONTRACTOR SHALL VERIFY EXISTING PENETRATIONS AND PATHWAYS FOR A COMPLETE INSTALLATION.
- F. WIRE ALL EMERGENCY LIGHTING AHEAD OF ALL SWITCHING AND CONTROLS.
- G. CONNECT NEW LIGHT FIXTURES TO EXISTING CIRCUIT SERVING EXISTING LIGHT FIXTURE. BECAUSE NEW LED FIXTURE AND LAMPS ARE MORE ENERGY EFFICIENT THAN EXISTING FIXTURES, AND LUMEN OUTPUT BETWEEN OLD AND NEW FIXTURES IS MATCHED, ALL EXISTING LIGHTING CIRCUITS WILL CONSUME LESS POWER AND DRAW LESS CURRENT. LIGHTING CIRCUITS WILL NOT BE OVERLOADED.
- H. FOR ALL RECESSED FIXTURES, VERIFY EXISTING PENETRATION DIMENSIONS PRIOR TO SUBMITTING.
- I. EC TO MATCH ALL EXISTING MOUNTING HEIGHTS FOR PENDANT, CHAIN, AND CABLE HUNG LIGHT FIXTURES IN SAME LOCATION.

CODED NOTES	
1	EXISTING FIXTURE IS LED. FIXTURE REMOVED FROM SCOPE OF WORK.



metro cd engineering  
 5880 SAWMILL RD #200  
 DUBLIN, OH 43017  
 614-923-3930

**Ohio Facilities Construction Commission**  
 30 W. SPRING ST., 4th FLOOR  
 COLUMBUS, OH 43215



**OHIO SCHOOL FOR THE DEAF**  
 500 MORSE RD,  
 COLUMBUS, OHIO 43214

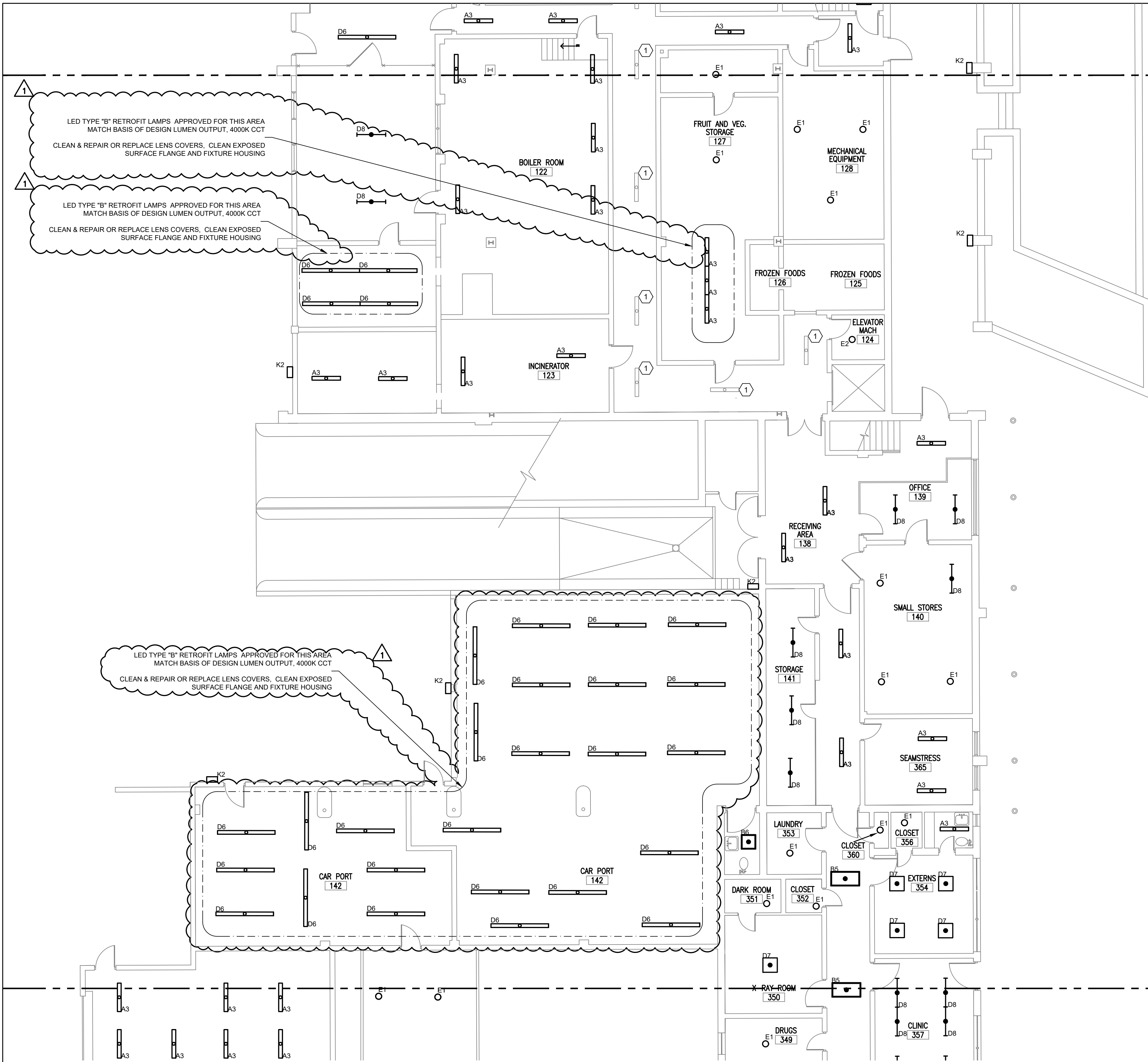
OFCC PROJECT NUMBER SFC-23N002

REV	DATE	RELEASED FOR
5/1/2025		BID ADDENDUM #1
4/17/2025		BID SET
3/17/2025		PERMIT SET
3/5/2025		100% CD OWNER REVIEW SUBMISSION
7/9/2024		50% SD / DD SUBMISSION

DESIGNED: MM JOB NUMBER: 22070-02  
 DRAWN: TH DATE: 3/17/2025  
 CHECKED: MC

**LIGHTING PLAN,  
 HEALTH SERVICES /  
 ADMIN FIRST FLOOR  
 ZONE A**

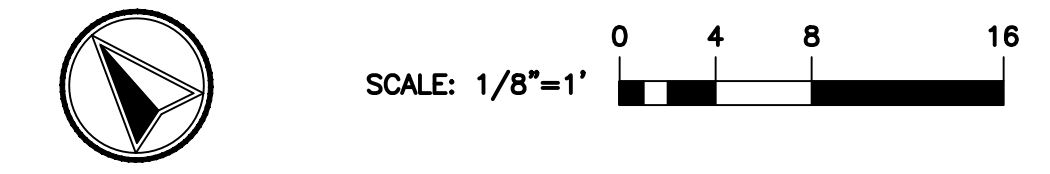
SHEET NUMBER  
**E101**



HEALTH SERVICES / ADMIN ZONE A / CONTINUED ON SHEET E101  
 HEALTH SERVICES / ADMIN ZONE B

HEALTH SERVICES / ADMIN ZONE B  
 HEALTH SERVICES / ADMIN ZONE C / CONTINUED ON SHEET E103

**A** LIGHTING PLAN, HEALTH SERVICES / ADMIN FIRST FLOOR ZONE B  
**E102** 1/8" = 1'-0"



- DRAWING NOTES:**
- ELECTRICAL CONTRACTOR SHALL REPLACE EXISTING LIGHT FIXTURES AS IDENTIFIED IN PROJECT DRAWINGS WITH NEW LED LIGHT FIXTURE PER LIGHTING FIXTURE SCHEDULE ON SHEETS E201. ELECTRICAL CONTRACTOR SHALL REMOVE EXISTING LIGHT FIXTURE IN ITS ENTIRETY, UNLESS EXISTING LIGHT FIXTURE IS NOTED TO RECEIVE A RETROFIT KIT OR REPLACEMENT LAMPS, RECYCLE DEMO FIXTURES PROPERLY. CONFIRM WITH FACILITIES THE DISPOSITION OF REMOVED LIGHTING FIXTURES. ELECTRICAL CONTRACTOR SHALL DISCONNECT EXISTING POWER AND CONTROL WIRING FROM EXISTING LIGHT FIXTURE AND RECONNECT TO NEW LIGHT FIXTURE FOR A COMPLETE AND OPERABLE SYSTEM. EXISTING LIGHTING CONTROLS ARE TO REMAIN AND BE REUSED AS IS UNLESS NOTED OTHERWISE. VERIFY EXACT REQUIREMENTS IN FIELD PRIOR TO BID AND INCLUDE ALL COSTS IN BID.
  - ALL EXISTING LIGHTING CONTROLS TO REMAIN AND BE REUSED UNLESS NOTED OTHERWISE.
  - EXISTING DUAL BALLAST LIGHT FIXTURES, SPECIFICALLY THOSE WHERE CENTER AND OUTSIDE LAMPS ARE CONTROLLED INDEPENDENTLY VIA SEPARATE WALL SWITCHES, THE CONTRACTOR IS TO SPLICE TOGETHER THE TWO TRAVELERS AFTER VERIFYING THE TRAVELERS ARE POWERED FROM THE SAME CIRCUIT. NEXT, THE CONTRACTOR WILL DEMO ONE OF THE WALL SWITCHES, REPLACING THE SWITCH WITH STAINLESS BOX COVER.
  - FOR SURFACE MOUNTED 1x4, 2x4, OR STRIP TYPE FIXTURES MOUNTED END TO END, VERIFY IF FIXTURES ARE WIRED SUCH THAT THE EXISTING FIXTURE IS USED AS A WIRE-WAY. FOR BIDDING PURPOSES, TAKE INTO ACCOUNT ADDITIONAL WORK AND MATERIALS TO PROVIDE AND INSTALL CONDUIT AND WIRING FOR REPLACEMENT LED FIXTURES NOT LISTED AS "AUTHORIZED FOR USE AS A WIRE-WAY", TO INCLUDE PROVIDING AND INSTALLING OPTIONAL SURFACE MOUNT KITS TO FACILITATE CONCEALING FLEX CABLE INSTALLATION WHERE NEEDED.
  - ELECTRICAL CONTRACTOR SHALL NOT DISTURB, PENETRATE OR MODIFY EXISTING CEILINGS. ELECTRICAL CONTRACTOR SHALL VERIFY EXISTING PENETRATIONS AND PATHWAYS FOR A COMPLETE INSTALLATION.
  - WIRE ALL EMERGENCY LIGHTING AHEAD OF ALL SWITCHING AND CONTROLS.
  - CONNECT NEW LIGHT FIXTURES TO EXISTING CIRCUIT SERVING EXISTING LIGHT FIXTURE. BECAUSE NEW LED FIXTURE AND LAMPS ARE MORE ENERGY EFFICIENT THAN EXISTING FIXTURES, AND LUMEN OUTPUT BETWEEN OLD AND NEW FIXTURES IS MATCHED, ALL EXISTING LIGHTING CIRCUITS WILL CONSUME LESS POWER AND DRAW LESS CURRENT. LIGHTING CIRCUITS WILL NOT BE OVERLOADED.
  - FOR ALL RECESSED FIXTURES, VERIFY EXISTING PENETRATION DIMENSIONS PRIOR TO SUBMITTING.
  - EC TO MATCH ALL EXISTING MOUNTING HEIGHTS FOR PENDANT, CHAIN, AND CABLE HUNG LIGHT FIXTURES IN SAME LOCATION.

CODED NOTES	
1	EXISTING FIXTURE IS LED. FIXTURE REMOVED FROM SCOPE OF WORK.

**KEYPLAN**

DESIGNED	MM	JOB NUMBER	22070-02
DRAWN	TH	DATE	3/17/2025
CHECKED	MC		
SHEET TITLE			
HEALTH SERVICES / ADMIN FIRST FLOOR ZONE B			
SHEET NUMBER			
E102			

metro cd engineering  
 5880 SAWMILL RD #200  
 DUBLIN, OH 43017  
 614-923-3930

Ohio Facilities Construction Commission  
 30 W. SPRING ST., 4th FLOOR  
 COLUMBUS, OH 43215

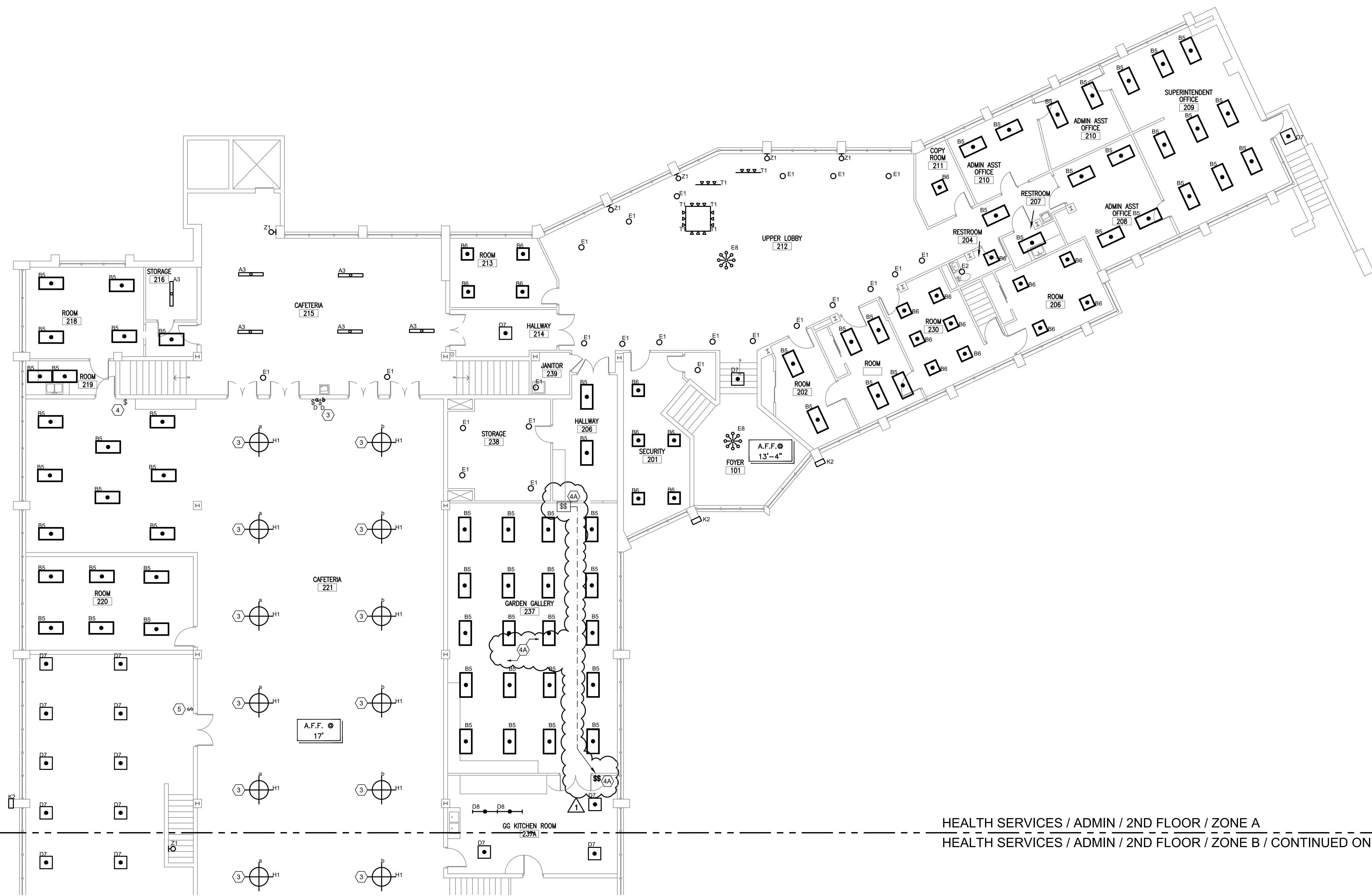


OHIO SCHOOL FOR THE DEAF  
 500 MORSE RD.  
 COLUMBUS, OHIO 43214

OFCC PROJECT NUMBER SFC-23N002

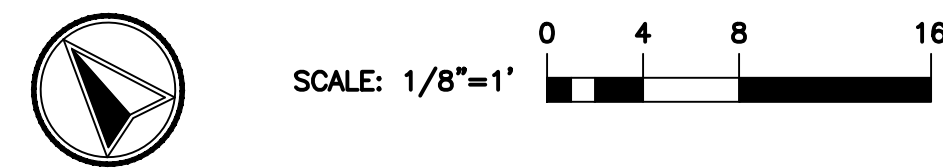
REV	DATE	RELEASED FOR
5/1/2025		BID ADDENDUM #1
4/7/2025		BID SET
3/17/2025		PERMIT SET
3/5/2025		100% CD OWNER REVIEW SUBMISSION
7/9/2024		50% SD / DD SUBMISSION





HEALTH SERVICES / ADMIN / 2ND FLOOR / ZONE A  
HEALTH SERVICES / ADMIN / 2ND FLOOR / ZONE B / CONTINUED ON SHEET E105

**A** LIGHTING PLAN, HEALTH SERVICES / ADMIN SECOND FLOOR ZONE A  
E104 1/8" = 1'-0"



**DRAWING NOTES:**

- A. ELECTRICAL CONTRACTOR SHALL REPLACE EXISTING LIGHT FIXTURES AS IDENTIFIED IN PROJECT DRAWINGS WITH NEW LED LIGHT FIXTURE PER LIGHTING FIXTURE SCHEDULE ON SHEETS E201. ELECTRICAL CONTRACTOR SHALL REMOVE EXISTING LIGHT FIXTURE IN ITS ENTIRETY, UNLESS EXISTING LIGHT FIXTURE IS NOTED TO RECEIVE A RETROFIT KIT OR REPLACEMENT LAMPS. RECYCLE DEMO FIXTURES PROPERLY. CONFIRM WITH FACILITIES THE DISPOSITION OF REMOVED LIGHTING FIXTURES. ELECTRICAL CONTRACTOR SHALL DISCONNECT EXISTING POWER AND CONTROL WIRING FROM EXISTING LIGHT FIXTURE AND RECONNECT TO NEW LIGHT FIXTURE FOR A COMPLETE AND OPERABLE SYSTEM. EXISTING LIGHTING CONTROLS ARE TO REMAIN AND BE REUSED AS IS UNLESS NOTED OTHERWISE. VERIFY EXACT REQUIREMENTS IN FIELD PRIOR TO BID AND INCLUDE ALL COSTS IN BID.
- B. ALL EXISTING LIGHTING CONTROLS TO REMAIN AND BE REUSED UNLESS NOTED OTHERWISE.
- C. EXISTING DUAL BALLAST LIGHT FIXTURES, SPECIFICALLY THOSE WHERE CENTER AND OUTSIDE LAMPS ARE CONTROLLED INDEPENDENTLY VIA SEPARATE WALL SWITCHES, THE CONTRACTOR IS TO SPLICE TOGETHER THE TWO TRAVELERS AFTER VERIFYING THE TRAVELERS ARE POWERED FROM THE SAME CIRCUIT. NEXT, THE CONTRACTOR WILL DEMO ONE OF THE WALL SWITCHES, REPLACING THE SWITCH WITH STAINLESS BOX COVER.
- D. FOR SURFACE MOUNTED 1x4, 2x4, OR STRIP TYPE FIXTURES MOUNTED END TO END, VERIFY IF FIXTURES ARE WIRED SUCH THAT THE EXISTING FIXTURE IS USED AS A WIRE-WAY. FOR BIDDING PURPOSES, TAKE INTO ACCOUNT ADDITIONAL WORK AND MATERIALS TO PROVIDE AND INSTALL CONDUIT AND WIRING FOR REPLACEMENT LED FIXTURES NOT LISTED AS "AUTHORIZED FOR USE AS A WIRE-WAY". TO INCLUDE PROVIDING AND INSTALLING OPTIONAL SURFACE MOUNT KITS TO FACILITATE CONCEALING FLEX CABLE INSTALLATION WHERE NEEDED.
- E. ELECTRICAL CONTRACTOR SHALL NOT DISTURB, PENETRATE OR MODIFY EXISTING CEILINGS. ELECTRICAL CONTRACTOR SHALL VERIFY EXISTING PENETRATIONS AND PATHWAYS FOR A COMPLETE INSTALLATION.
- F. WIRE ALL EMERGENCY LIGHTING AHEAD OF ALL SWITCHING AND CONTROLS.
- G. CONNECT NEW LIGHT FIXTURES TO EXISTING CIRCUIT SERVING EXISTING LIGHT FIXTURE. BECAUSE NEW LED FIXTURE AND LAMPS ARE MORE ENERGY EFFICIENT THAN EXISTING FIXTURES, AND LUMEN OUTPUT BETWEEN OLD AND NEW FIXTURES IS MATCHED, ALL EXISTING LIGHTING CIRCUITS WILL CONSUME LESS POWER AND DRAW LESS CURRENT. LIGHTING CIRCUITS WILL NOT BE OVERLOADED.
- H. FOR ALL RECESSED FIXTURES, VERIFY EXISTING PENETRATION DIMENSIONS PRIOR TO SUBMITTING.
- I. EC TO MATCH ALL EXISTING MOUNTING HEIGHTS FOR PENDANT, CHAIN, AND CABLE HUNG LIGHT FIXTURES IN SAME LOCATION.

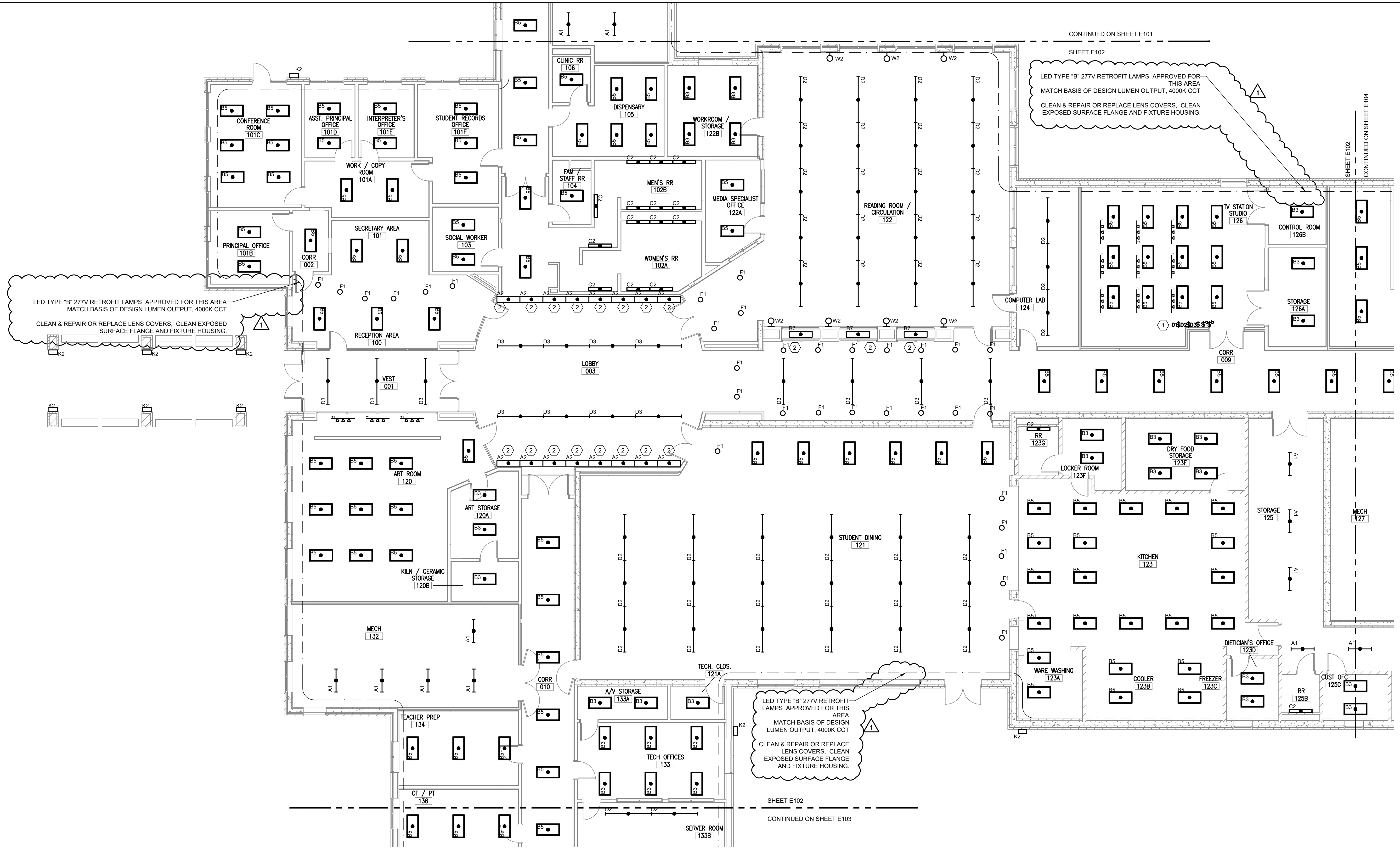
CODED NOTES	
3	DEMO EXISTING SWITCHING CONTROLLING RECESSED LIGHTING. PROVIDE (2) LINE VOLTAGE TOGGLE TYPE NON-DIMMING WALL SWITCHES. PROVIDE WIRING AND CONDUIT TO WIRE TRAVELERS TO H1 FIXTURES AS LABELED. DEMO EXISTING RECESSED PANELBOARD TUB PREVIOUSLY HOUSING SWITCHES. PROVIDE A COVER PLATE FOR ANY REMAINING WALL OPENING.
4	INTERCEPT EXISTING CIRCUIT IN THIS AREA, INSTALL NEW WALL SWITCH AND WIRING TO CONTROL THE EIGHT B5 FIXTURES LOCATED IN THIS AREA. FIXTURES CURRENTLY SWITCHED BY RECESSED PANELBOARD.
4A	EXISTING SWITCHING FOR ROOM LIGHTING IS PARTIALLY OPERATIONAL. INTERCEPT EXISTING CIRCUITS IN THIS AREA, INSTALL NEW DOUBLE GANGED WALL MOUNTED TOGGLE SWITCH. EXTEND / RELOCATE TRAVELERS FROM EXISTING SWITCH TO NEW SWITCH. EXTEND CIRCUIT COMMON TO NEW LIGHT SWITCH. LOCATE ANY OTHER SWITCHING TIED TO LIGHTING IN THIS AREA AND REPEAT RE-WIRING AS DESCRIBED ABOVE. DEMO EXISTING SWITCHES & PROVIDE WALL PLATE COVERS.
5	INTERCEPT EXISTING CIRCUIT IN THIS ROOM. INSTALL NEW WALL SWITCH AND WIRING TO CONTROL THE TWENTY FOUR D7 LIGHT FIXTURES INSTALLED IN THIS ROOM.

**KEYPLAN**

DESIGNED	MM	JOB NUMBER	22070-02
DRAWN	TH	DATE	3/17/2025
CHECKED	MC		
SHEET TITLE			
HEALTH SERVICES / ADMIN SECOND FLOOR ZONE A			
SHEET NUMBER			
<b>E104</b>			

REV	DATE	RELEASED FOR
5/1/2025		BID ADDENDUM #1
4/17/2025		BID SET
3/17/2025		PERMIT SET
3/5/2025		100% CD OWNER REVIEW SUBMISSION
7/9/2024		50% SD / DD SUBMISSION



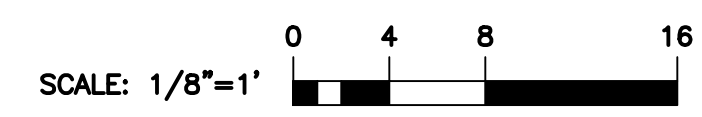
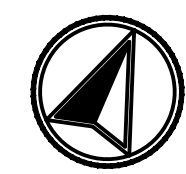


LED TYPE "B" 277V RETROFIT LAMPS APPROVED FOR THIS AREA  
MATCH BASIS OF DESIGN LUMEN OUTPUT, 4000K CCT  
CLEAN & REPAIR OR REPLACE LENS COVERS, CLEAN EXPOSED  
SURFACE FLANGE AND FIXTURE HOUSING.

LED TYPE "B" 277V RETROFIT LAMPS APPROVED FOR THIS AREA  
MATCH BASIS OF DESIGN LUMEN OUTPUT, 4000K CCT  
CLEAN & REPAIR OR REPLACE LENS COVERS, CLEAN  
EXPOSED SURFACE FLANGE AND FIXTURE HOUSING.

LED TYPE "B" 277V RETROFIT LAMPS APPROVED FOR THIS AREA  
MATCH BASIS OF DESIGN LUMEN OUTPUT, 4000K CCT  
CLEAN & REPAIR OR REPLACE LENS COVERS, CLEAN  
EXPOSED SURFACE FLANGE AND FIXTURE HOUSING.

**A LIGHTING PLAN, NEW SCHOOL ZONE B**  
**E102** 1/8" = 1'-0"



**DRAWING NOTES:**

- A. ELECTRICAL CONTRACTOR SHALL REPLACE EXISTING LIGHT FIXTURES AS IDENTIFIED IN PROJECT DRAWINGS WITH NEW LED LIGHT FIXTURE PER LIGHTING FIXTURE SCHEDULE ON SHEETS E201. ELECTRICAL CONTRACTOR SHALL REMOVE EXISTING LIGHT FIXTURE IN ITS ENTIRETY, UNLESS EXISTING LIGHT FIXTURE IS NOTED TO RECEIVE A RETROFIT KIT OR REPLACEMENT LAMPS. RECYCLE DEMO FIXTURES PROPERLY. CONFIRM WITH FACILITIES THE DISPOSITION OF REMOVED LIGHTING FIXTURES. ELECTRICAL CONTRACTOR SHALL DISCONNECT EXISTING POWER AND CONTROL WIRING FROM EXISTING LIGHT FIXTURE AND RECONNECT TO NEW LIGHT FIXTURE FOR A COMPLETE AND OPERABLE SYSTEM. EXISTING LIGHTING CONTROLS ARE TO REMAIN AND BE REUSED AS IS UNLESS NOTED OTHERWISE. VERIFY EXACT REQUIREMENTS IN FIELD PRIOR TO BID AND INCLUDE ALL COSTS IN BID.
- B. ALL EXISTING LIGHTING CONTROLS TO REMAIN AND BE REUSED UNLESS NOTED OTHERWISE.
- C. EXISTING DUAL BALLAST LIGHT FIXTURES, SPECIFICALLY THOSE WHERE CENTER AND OUTSIDE LAMPS ARE CONTROLLED INDEPENDENTLY VIA SEPARATE WALL SWITCHES, THE CONTRACTOR IS TO SPLICE TOGETHER THE TWO TRAVELERS AFTER VERIFYING THE TRAVELERS ARE POWERED FROM THE SAME CIRCUIT. NEXT, THE CONTRACTOR WILL DEMO ONE OF THE WALL SWITCHES, REPLACING THE SWITCH WITH STAINLESS BOX COVER.
- D. FOR SURFACE MOUNTED 1X4, 2X4, OR STRIP TYPE FIXTURES MOUNTED END TO END, VERIFY IF FIXTURES ARE WIRED SUCH THAT THE EXISTING FIXTURE IS USED AS A WIRE-WAY FOR BIDDING PURPOSES. TAKE INTO ACCOUNT ADDITIONAL WORK AND MATERIALS TO PROVIDE AND INSTALL CONDUIT AND WIRING FOR REPLACEMENT LED FIXTURES NOT LISTED AS "AUTHORIZED FOR USE AS A WIRE-WAY", TO INCLUDE PROVIDING AND INSTALLING OPTIONAL SURFACE MOUNT KITS TO FACILITATE CONCEALING FLEX CABLE INSTALLATION WHERE NEEDED.
- E. ELECTRICAL CONTRACTOR SHALL NOT DISTURB, PENETRATE OR MODIFY EXISTING CEILINGS. ELECTRICAL CONTRACTOR SHALL VERIFY EXISTING PENETRATIONS AND PATHWAYS FOR A COMPLETE INSTALLATION.
- F. WIRE ALL EMERGENCY LIGHTING AHEAD OF ALL SWITCHING AND CONTROLS.
- G. CONNECT NEW LIGHT FIXTURES TO EXISTING CIRCUIT SERVING EXISTING LIGHT FIXTURE. BECAUSE NEW LED FIXTURE AND LAMPS ARE MORE ENERGY EFFICIENT THAN EXISTING FIXTURES, AND LUMEN OUTPUT BETWEEN OLD AND NEW FIXTURES IS MATCHED, ALL EXISTING LIGHTING CIRCUITS WILL CONSUME LESS POWER AND DRAW LESS CURRENT. LIGHTING CIRCUITS WILL NOT BE OVERLOADED.
- H. FOR ALL RECESSED FIXTURES, VERIFY EXISTING PENETRATION DIMENSIONS PRIOR TO SUBMITTING.
- I. EC TO MATCH ALL EXISTING MOUNTING HEIGHTS FOR PENDANT, CHAIN, AND CABLE HUNG LIGHT FIXTURES IN SAME LOCATION.

CODED NOTES	
1	EXISTING TO REMAIN LINE VOLTAGE DIMMING SWITCHES
2	DISPLAY CASE LIGHTING

**KEYPLAN**

DESIGNED	MM	JOB NUMBER	22070-02
DRAWN	TH	DATE	3/17/2025
CHECKED	MC		

**LIGHTING PLAN, NEW SCHOOL ZONE B**

SHEET NUMBER  
**E102**

metro cd engineering  
5880 SAWMILL RD #200  
DUBLIN, OH 43017  
614-923-3930

Facilities Construction Commission  
30 W. SPRING ST., 4th FLOOR  
COLUMBUS, OH 43215



**OHIO SCHOOL FOR THE DEAF**  
500 MORSE RD.  
COLUMBUS, OHIO 43214

OFCC PROJECT NUMBER SFC-23N002

REV	DATE	RELEASED FOR
5/1/2025		RID ADDENDUM #1
4/7/2025		BID SET
3/17/2025		PERMIT SET
3/5/2025		100% CD OWNER REVIEW SUBMISSION
7/9/2024		50% SD / DD SUBMISSION

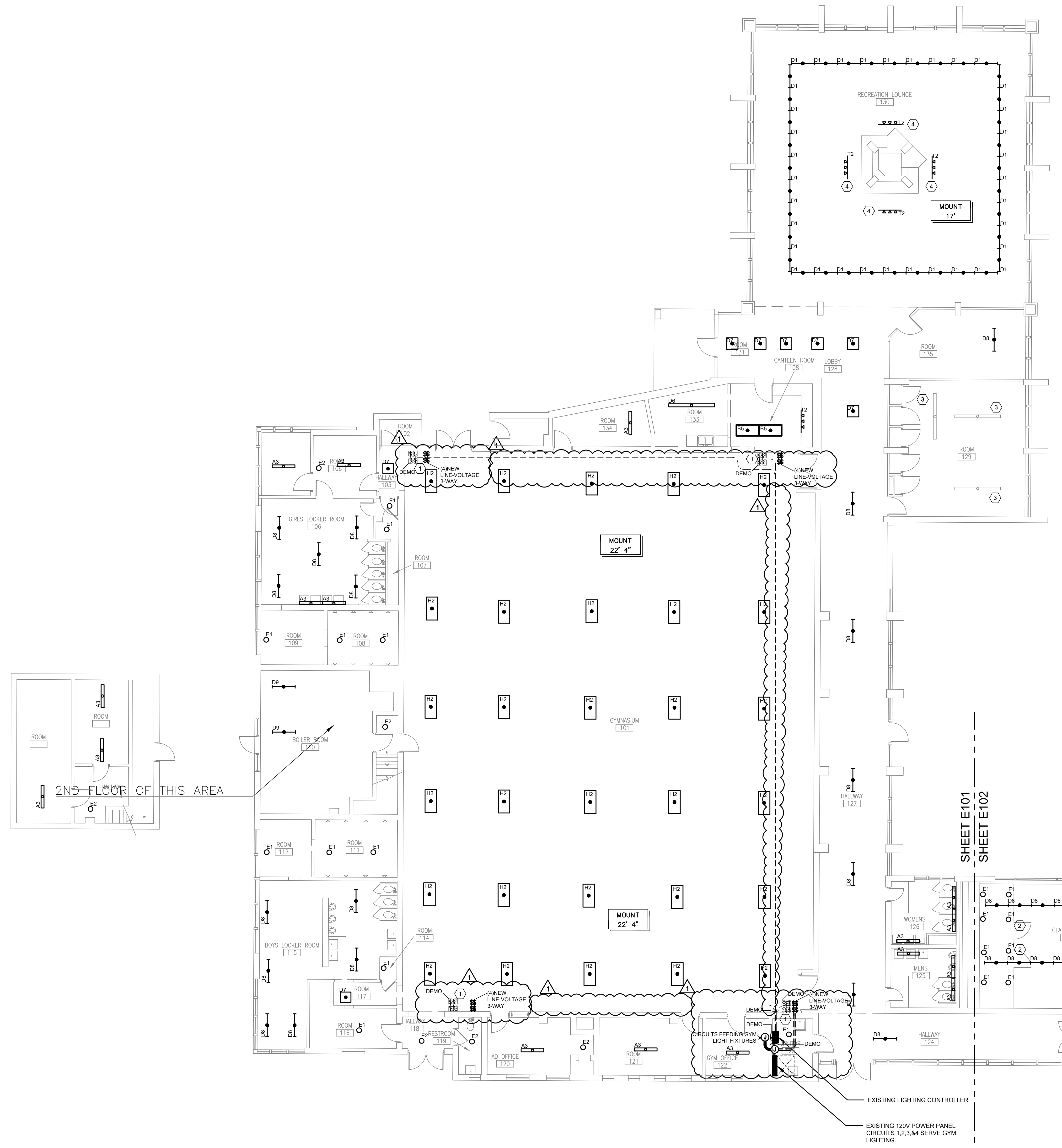
DESIGNED	MM	JOB NUMBER	22070-02
DRAWN	TH	DATE	3/17/2025
CHECKED	MC		

**LIGHTING PLAN, NEW SCHOOL ZONE B**

SHEET NUMBER  
**E102**



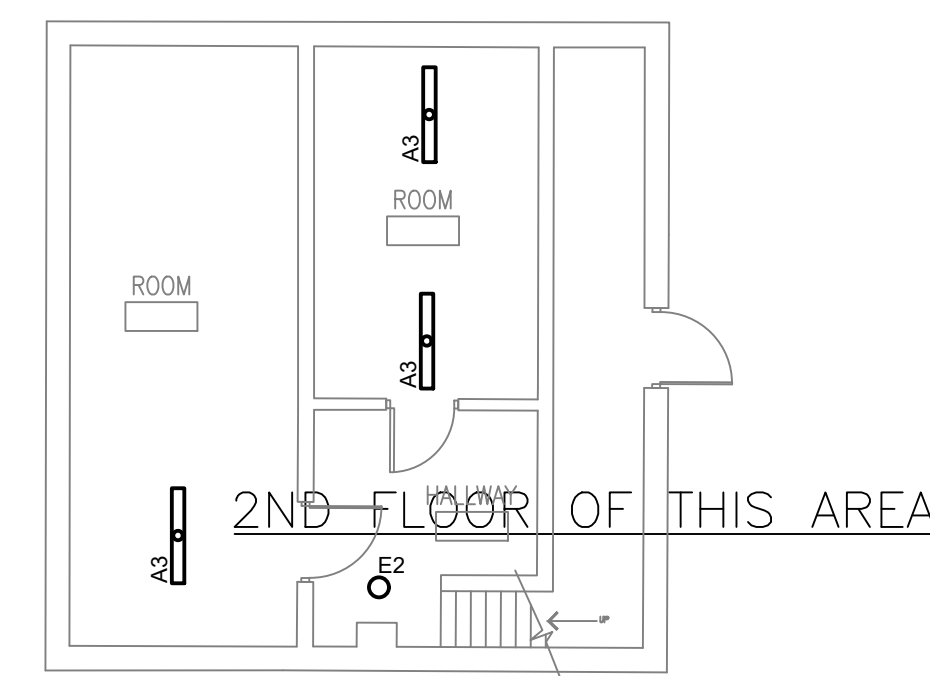




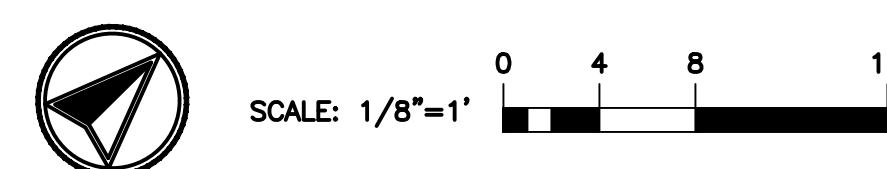
**DRAWING NOTES:**

- A. ELECTRICAL CONTRACTOR SHALL REPLACE EXISTING LIGHT FIXTURES AS IDENTIFIED IN PROJECT DRAWINGS WITH NEW LED LIGHT FIXTURE PER LIGHTING FIXTURE SCHEDULE ON SHEETS E201. ELECTRICAL CONTRACTOR SHALL REMOVE EXISTING LIGHT FIXTURE IN ITS ENTIRETY, UNLESS EXISTING LIGHT FIXTURE IS NOTED TO RECEIVE A RETROFIT KIT OR REPLACEMENT LAMPS, RECYCLE DEMO FIXTURES PROPERLY, CONFIRM WITH FACILITIES THE DISPOSITION OF REMOVED LIGHTING FIXTURES. ELECTRICAL CONTRACTOR SHALL DISCONNECT EXISTING POWER AND CONTROL WIRING FROM EXISTING LIGHT FIXTURE AND RECONNECT TO NEW LIGHT FIXTURE FOR A COMPLETE AND OPERABLE SYSTEM. EXISTING LIGHTING CONTROLS ARE TO REMAIN AND BE REUSED AS IS UNLESS NOTED OTHERWISE. VERIFY EXACT REQUIREMENTS IN FIELD PRIOR TO BID AND INCLUDE ALL COSTS IN BID.
- B. ALL EXISTING LIGHTING CONTROLS TO REMAIN AND BE REUSED UNLESS NOTED OTHERWISE.
- C. EXISTING DUAL BALLAST LIGHT FIXTURES, SPECIFICALLY THOSE WHERE CENTER AND OUTSIDE LAMPS ARE CONTROLLED INDEPENDENTLY VIA SEPARATE WALL SWITCHES, THE CONTRACTOR IS TO SPLICE TOGETHER THE TWO TRAVELERS AFTER VERIFYING THE TRAVELERS ARE POWERED FROM THE SAME CIRCUIT. NEXT, THE CONTRACTOR WILL DEMO ONE OF THE WALL SWITCHES, REPLACING THE SWITCH WITH STAINLESS BOX COVER.
- D. FOR SURFACE MOUNTED 1X4, 2X4, OR STRIP TYPE FIXTURES MOUNTED END TO END, VERIFY IF FIXTURES ARE WIRED SUCH THAT THE EXISTING FIXTURE IS USED AS A WIRE-WAY. FOR BIDDING PURPOSES, TAKE INTO ACCOUNT ADDITIONAL WORK AND MATERIALS TO PROVIDE AND INSTALL CONDUIT AND WIRING FOR REPLACEMENT LED FIXTURES NOT LISTED AS AUTHORIZED FOR USE AS A WIRE-WAY. TO INCLUDE PROVIDING AND INSTALLING OPTIONAL SURFACE MOUNT KITS TO FACILITATE CONCEALING FLEX CABLE INSTALLATION WHERE NEEDED.
- E. ELECTRICAL CONTRACTOR SHALL NOT DISTURB, PENETRATE OR MODIFY EXISTING CEILINGS. ELECTRICAL CONTRACTOR SHALL VERIFY EXISTING PENETRATIONS AND PATHWAYS FOR A COMPLETE INSTALLATION.
- F. WIRE ALL EMERGENCY LIGHTING AHEAD OF ALL SWITCHING AND CONTROLS.
- G. CONNECT NEW LIGHT FIXTURES TO EXISTING CIRCUIT SERVING EXISTING LIGHT FIXTURE, BECAUSE NEW LED FIXTURE AND LAMPS ARE MORE ENERGY EFFICIENT THAN EXISTING FIXTURES, AND LUMEN OUTPUT BETWEEN OLD AND NEW FIXTURES IS MATCHED, ALL EXISTING LIGHTING CIRCUITS WILL CONSUME LESS POWER AND DRAW LESS CURRENT. LIGHTING CIRCUITS WILL NOT BE OVERLOADED.
- H. FOR ALL RECESSED FIXTURES, VERIFY EXISTING PENETRATION DIMENSIONS PRIOR TO SUBMITTING.
- I. EC TO MATCH ALL EXISTING MOUNTING HEIGHTS FOR PENDANT, CHAIN, AND CABLE HUNG LIGHT FIXTURES IN SAME LOCATION.

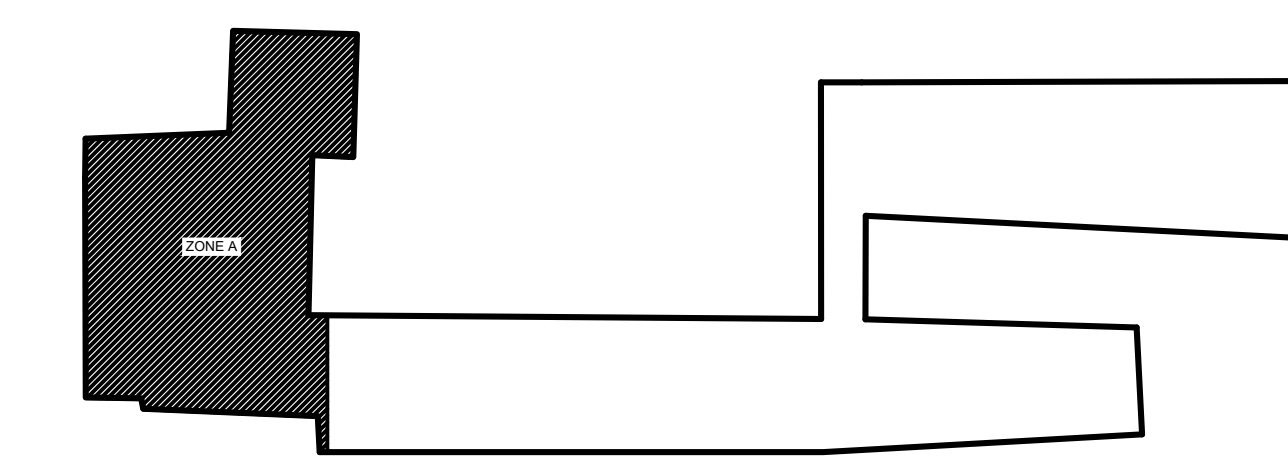
CODED NOTES	
1	BYPASS EXISTING LIGHTING CONTROLLER. DEMO (4) EXISTING LOW VOLTAGE GYM LIGHTING 6-PUSHBUTTON WALL MOUNTED CONTROLS HOUSED WITHIN SINGLE RECESSED SWITCH BOX. CONTRACTOR TO INTERCEPT (4) GYM LIGHTING BRANCH CIRCUITS BETWEEN LIGHTING POWER PANEL AND LIGHTING CONTROLLER. CONTRACTOR TO INTERCEPT GYM LIGHTING CIRCUITS BETWEEN LIGHTING CONTROLLER AND FIXTURES. CONTRACTOR TO INSTALL (4) NEW 4-GANG 3-WAY SWITCHES. COMPLETE WIRING & CONDUIT BETWEEN (4) NEW 4-GANG SWITCHES, (4) LIGHTING BRANCH CIRCUITS AND LIGHT FIXTURES.
2	SOUND PROOF ROOM, VERIFY EXISTING FIXTURE INSTALLATION DETAILS PRIOR TO WORK
3	FIXTURES ALREADY LED, REMOVE FROM SCOPE
4	NEW FIXTURE, NON LED, FIXTURE TO BE RELAMPED.



**A LIGHTING PLAN, GYMNASIUM**  
**E101 1/8" = 1'-0"**



KEYPLAN



metro cd engineering  
 5880 SAWMILL RD #200  
 DUBLIN, OH 43017  
 614-923-3930

Ohio Facilities Construction Commission  
 30 W. SPRING ST., 4th FLOOR  
 COLUMBUS, OH 43215



OHIO SCHOOL FOR THE DEAF  
 500 MORSE RD.  
 COLUMBUS, OHIO 43214

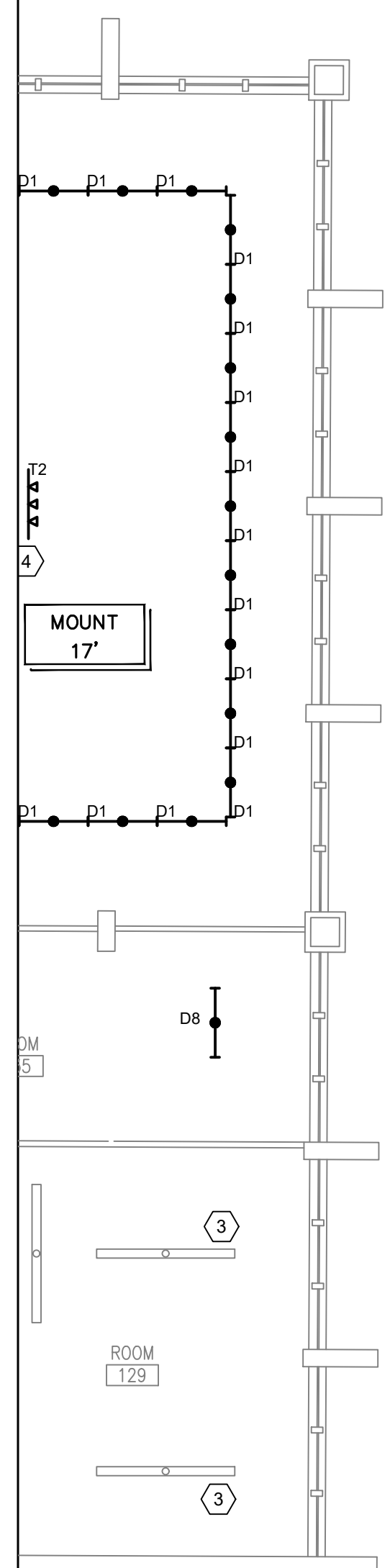
OFCC PROJECT NUMBER SFC-23N002

REV	DATE	RELEASED FOR
5/1/2025		BID ADDENDUM #1
4/17/2025		BID SET
3/17/2025		PERMIT SET
3/5/2025		100% CD OWNER REVIEW SUBMISSION
7/9/2024		50% SD / DD SUBMISSION

DESIGNED	MM	JOB NUMBER	22070-02
DRAWN	TH	DATE	3/17/2025
CHECKED	MC		

OLD SCHOOL LIGHTING PLAN  
 ZONE A

SHEET NUMBER  
**E101**



**DRAWING NOTES:**

- A. ELECTRICAL CONTRACTOR SHALL REPLACE EXISTING LIGHT FIXTURES AS IDENTIFIED IN PROJECT DRAWINGS WITH NEW LED LIGHT FIXTURE PER LIGHTING FIXTURE SCHEDULE ON SHEETS E201. ELECTRICAL CONTRACTOR SHALL REMOVE EXISTING LIGHT FIXTURE IN ITS ENTIRETY, UNLESS EXISTING LIGHT FIXTURE IS NOTED TO RECEIVE A RETROFIT KIT OR REPLACEMENT LAMPS, RECYCLE DEMO FIXTURES PROPERLY, CONFIRM WITH FACILITIES THE DISPOSITION OF REMOVED LIGHTING FIXTURES. ELECTRICAL CONTRACTOR SHALL DISCONNECT EXISTING POWER AND CONTROL WIRING FROM EXISTING LIGHT FIXTURE AND RECONNECT TO NEW LIGHT FIXTURE FOR A COMPLETE AND OPERABLE SYSTEM. EXISTING LIGHTING CONTROLS ARE TO REMAIN AND BE REUSED AS IS UNLESS NOTED OTHERWISE. VERIFY EXACT REQUIREMENTS IN FIELD PRIOR TO BID AND INCLUDE ALL COSTS IN BID.
- B. ALL EXISTING LIGHTING CONTROLS TO REMAIN AND BE REUSED UNLESS NOTED OTHERWISE.
- C. EXISTING DUAL BALLAST LIGHT FIXTURES, SPECIFICALLY THOSE WHERE CENTER AND OUTSIDE LAMPS ARE CONTROLLED INDEPENDENTLY VIA SEPARATE WALL SWITCHES, THE CONTRACTOR IS TO SPLICE TOGETHER THE TWO TRAVELERS AFTER VERIFYING THE TRAVELERS ARE POWERED FROM THE SAME CIRCUIT. NEXT, THE CONTRACTOR WILL DEMO ONE OF THE WALL SWITCHES, REPLACING THE SWITCH WITH STAINLESS BOX COVER.
- D. FOR SURFACE MOUNTED 1X4, 2X4, OR STRIP TYPE FIXTURES MOUNTED END TO END, VERIFY IF FIXTURES ARE WIRED SUCH THAT THE EXISTING FIXTURE IS USED AS A WIRE-WAY. FOR BIDDING PURPOSES, TAKE INTO ACCOUNT ADDITIONAL WORK AND MATERIALS TO PROVIDE AND INSTALL CONDUIT AND WIRING FOR REPLACEMENT LED FIXTURES NOT LISTED AS "AUTHORIZED FOR USE AS A WIRE-WAY", TO INCLUDE PROVIDING AND INSTALLING OPTIONAL SURFACE MOUNT KITS TO FACILITATE CONCEALING FLEX CABLE INSTALLATION WHERE NEEDED.
- E. ELECTRICAL CONTRACTOR SHALL NOT DISTURB, PENETRATE OR MODIFY EXISTING CEILINGS. ELECTRICAL CONTRACTOR SHALL VERIFY EXISTING PENETRATIONS AND PATHWAYS FOR A COMPLETE INSTALLATION.
- F. WIRE ALL EMERGENCY LIGHTING AHEAD OF ALL SWITCHING AND CONTROLS.
- G. CONNECT NEW LIGHT FIXTURES TO EXISTING CIRCUIT SERVING EXISTING LIGHT FIXTURE, BECAUSE NEW LED FIXTURE AND LAMPS ARE MORE ENERGY EFFICIENT THAN EXISTING FIXTURES, AND LUMEN OUTPUT BETWEEN OLD AND NEW FIXTURES IS MATCHED, ALL EXISTING LIGHTING CIRCUITS WILL CONSUME LESS POWER AND DRAW LESS CURRENT. LIGHTING CIRCUITS WILL NOT BE OVERLOADED.
- H. FOR ALL RECESSED FIXTURES, VERIFY EXISTING PENETRATION DIMENSIONS PRIOR TO SUBMITTING.
- I. EC TO MATCH ALL EXISTING MOUNTING HEIGHTS FOR PENDANT, CHAIN, AND CABLE HUNG LIGHT FIXTURES IN SAME LOCATION.

CODED NOTES	
1	NOT USED
2	SOUND PROOF ROOM, VERIFY EXISTING FIXTURE INSTALLATION DETAILS PRIOR TO WORK
3	FIXTURES ALREADY LED, REMOVE FROM SCOPE

metro cd engineering  
5880 SAWMILL RD #200  
DUBLIN, OH 43017  
614-923-3930

Ohio Facilities Construction Commission  
30 W. SPRING ST., 4th FLOOR  
COLUMBUS, OH 43215



OHIO SCHOOL FOR THE DEAF  
500 MORSE RD,  
COLUMBUS, OHIO 43214

OFCC PROJECT NUMBER SFC-23N002

REV	DATE	RELEASED FOR
5/1/2025		BID ADDENDUM #1
4/17/2025		BID SET
3/17/2025		PERMIT SET
3/5/2025		100% CD OWNER REVIEW SUBMISSION
7/9/2024		50% SD / DD SUBMISSION

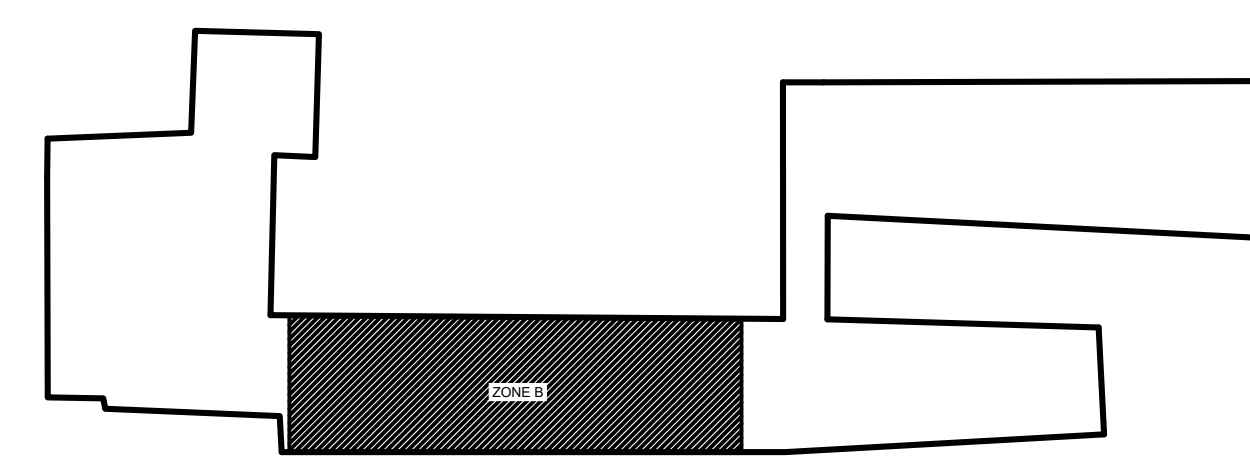
DESIGNED	MM	JOB NUMBER	22070-02
DRAWN	TH	DATE	3/17/2025
CHECKED	MC		

SHEET TITLE  
**OLD SCHOOL LIGHTING PLAN ZONE B**

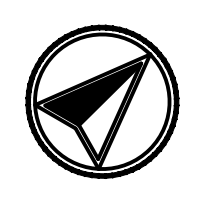
SHEET NUMBER  
**E102**



KEYPLAN



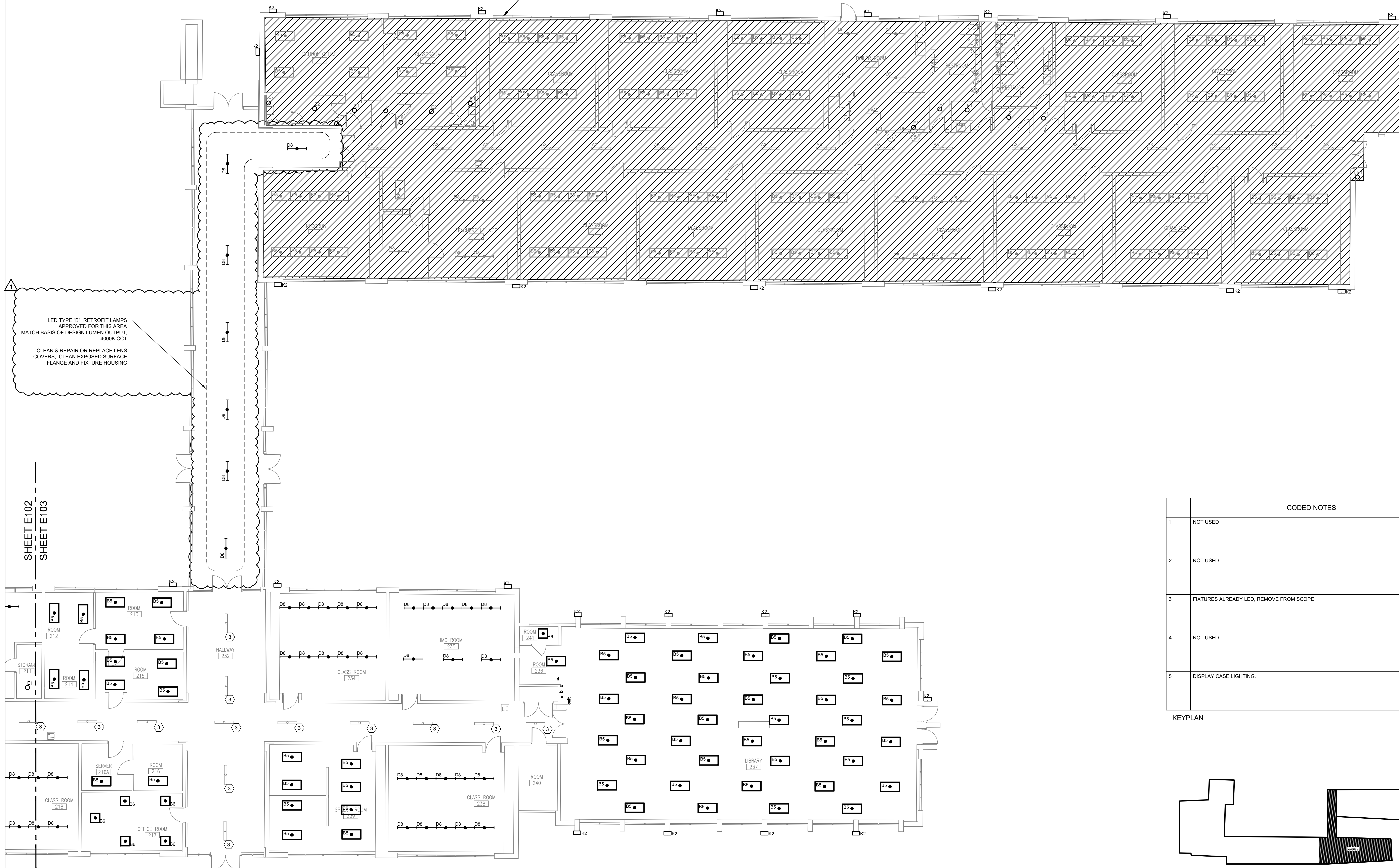
**A LIGHTING PLAN, OLD MIDDLE SCHOOL PART A**  
**E102 1/8" = 1'-0"**



**DRAWING NOTES:**

- A. ELECTRICAL CONTRACTOR SHALL REPLACE EXISTING LIGHT FIXTURES AS IDENTIFIED IN PROJECT DRAWINGS WITH NEW LED LIGHT FIXTURE PER LIGHTING FIXTURE SCHEDULE ON SHEETS E201. ELECTRICAL CONTRACTOR SHALL REMOVE EXISTING LIGHT FIXTURE IN ITS ENTIRETY, UNLESS EXISTING LIGHT FIXTURE IS NOTED TO RECEIVE A RETROFIT KIT OR REPLACEMENT LAMPS, RECYCLE DEMO FIXTURES PROPERLY, CONFIRM WITH FACILITIES THE DISPOSITION OF REMOVED LIGHTING FIXTURES. ELECTRICAL CONTRACTOR SHALL DISCONNECT EXISTING POWER AND CONTROL WIRING FROM EXISTING LIGHT FIXTURE AND RECONNECT TO NEW LIGHT FIXTURE FOR A COMPLETE AND OPERABLE SYSTEM. EXISTING LIGHTING CONTROLS ARE TO REMAIN AND BE REUSED AS IS UNLESS NOTED OTHERWISE. VERIFY EXACT REQUIREMENTS IN FIELD PRIOR TO BID AND INCLUDE ALL COSTS IN BID.
- B. ALL EXISTING LIGHTING CONTROLS TO REMAIN AND BE REUSED UNLESS NOTED OTHERWISE.
- C. EXISTING DUAL BALLAST LIGHT FIXTURES, SPECIFICALLY THOSE WHERE CENTER AND OUTSIDE LAMPS ARE CONTROLLED INDEPENDENTLY VIA SEPARATE WALL SWITCHES, THE CONTRACTOR IS TO SPLICE TOGETHER THE TWO TRAVELERS AFTER VERIFYING THE TRAVELERS ARE POWERED FROM THE SAME CIRCUIT. NEXT, THE CONTRACTOR WILL DEMO ONE OF THE WALL SWITCHES, REPLACING THE SWITCH WITH STAINLESS BOX COVER.
- D. FOR SURFACE MOUNTED 1X4, 2X4, OR STRIP TYPE FIXTURES MOUNTED END TO END, VERIFY IF FIXTURES ARE WIRED SUCH THAT THE EXISTING FIXTURE IS USED AS A WIRE-WAY. FOR BIDDING PURPOSES, TAKE INTO ACCOUNT ADDITIONAL WORK AND MATERIALS TO PROVIDE AND INSTALL CONDUIT AND WIRING FOR REPLACEMENT LED FIXTURES NOT LISTED AS "AUTHORIZED FOR USE AS A WIRE-WAY", TO INCLUDE PROVIDING AND INSTALLING OPTIONAL SURFACE MOUNT KITS TO FACILITATE CONGEOING FLEX CABLE INSTALLATION WHERE NEEDED.
- E. ELECTRICAL CONTRACTOR SHALL NOT DISTURB, PENETRATE OR MODIFY EXISTING CEILINGS. ELECTRICAL CONTRACTOR SHALL VERIFY EXISTING PENETRATIONS AND PATHWAYS FOR A COMPLETE INSTALLATION.
- F. WIRE ALL EMERGENCY LIGHTING AHEAD OF ALL SWITCHING AND CONTROLS.
- G. CONNECT NEW LIGHT FIXTURES TO EXISTING CIRCUIT SERVING EXISTING LIGHT FIXTURE, BECAUSE NEW LED FIXTURE AND LAMPS ARE MORE ENERGY EFFICIENT THAN EXISTING FIXTURES, AND LUMEN OUTPUT BETWEEN OLD AND NEW FIXTURES IS MATCHED, ALL EXISTING LIGHTING CIRCUITS WILL CONSUME LESS POWER AND DRAW LESS CURRENT. LIGHTING CIRCUITS WILL NOT BE OVERLOADED.
- H. FOR ALL RECESSED FIXTURES, VERIFY EXISTING PENETRATION DIMENSIONS PRIOR TO SUBMITTING.
- I. EC TO MATCH ALL EXISTING MOUNTING HEIGHTS FOR PENDANT, CHAIN, AND CABLE HUNG LIGHT FIXTURES IN SAME LOCATION.

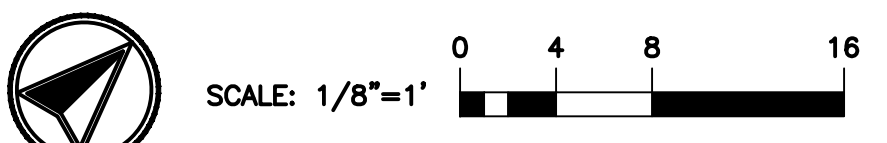
HATCHED AREA NOT IN SCOPE



LED TYPE "B" RETROFIT LAMPS APPROVED FOR THIS AREA MATCH BASIS OF DESIGN LUMEN OUTPUT, 4000K CCT  
CLEAN & REPAIR OR REPLACE LENS COVERS, CLEAN EXPOSED SURFACE FLANGE AND FIXTURE HOUSING

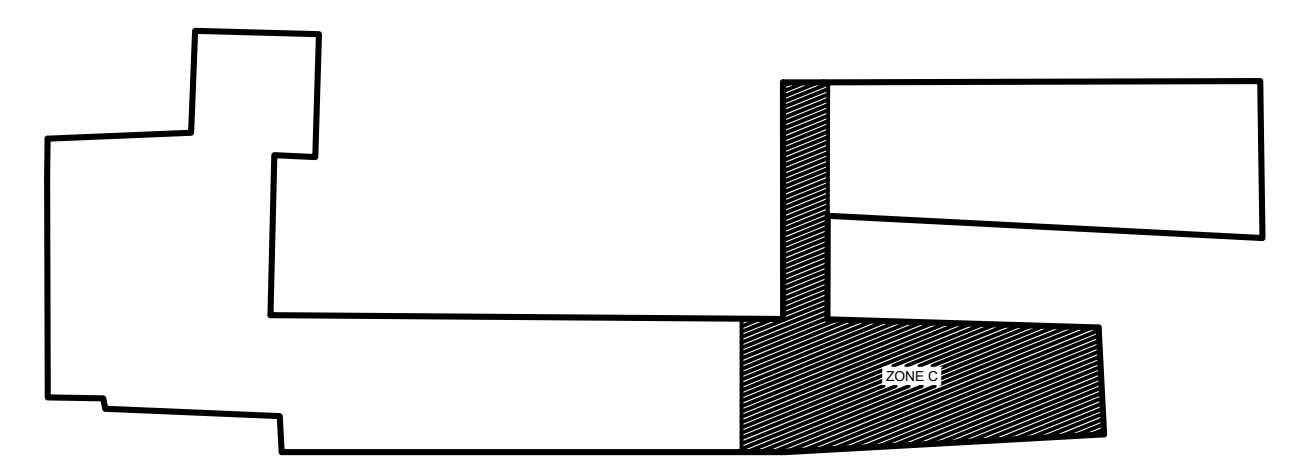
SHEET E102  
SHEET E103

**A LIGHTING PLAN, OLD MIDDLE SCHOOL PART B**  
E103 1/8" = 1'-0"



CODED NOTES	
1	NOT USED
2	NOT USED
3	FIXTURES ALREADY LED, REMOVE FROM SCOPE
4	NOT USED
5	DISPLAY CASE LIGHTING.

KEYPLAN



metro cd engineering  
5880 SAWMILL RD #200  
DUBLIN, OH 43017  
614-923-3930

Ohio Facilities Construction Commission  
30 W. SPRING ST., 4th FLOOR  
COLUMBUS, OH 43215



OHIO SCHOOL FOR THE DEAF  
500 MORSE RD.  
COLUMBUS, OHIO 43214

OFCC PROJECT NUMBER SFC-23N002

REV	DATE	RELEASED FOR
5/1/2025		RID ADDENDUM #1
4/17/2025		BID SET
3/17/2025		PERMIT SET
3/5/2025		100% CD OWNER REVIEW SUBMISSION
7/9/2024		50% SD / DD SUBMISSION

DESIGNED: MM  
DRAWN: TH  
CHECKED: MC  
JOB NUMBER: 22070-02  
DATE: 3/17/2025

OLD SCHOOL LIGHTING PLAN  
ZONE C

SHEET NUMBER  
**E103**