

Ohio Department of Natural Resources  
DNR-250014 Mary Jane Thurston State Park Tree House Cabins  
1466 State Route 65, McClure OH 43534, Wood County

Bid Date: 01/13/2026 at 2:00PM

## **ADDENDUM 02**

**Date of Addendum: 1/06/2026**

### **To the Drawings and Specifications for:**

Ohio Department of Natural Resources  
DNR-250014 Mary Jane Thurston State Park Tree House Cabins  
1466 State Route 65, McClure OH 43534, Wood County

This addendum modifies the original CONTRACT DOCUMENTS dated 12/04/2025. Acknowledge receipt of this Addendum in the space provided on the Bid Form. Failure to do so may subject the Bidder to disqualification.

This addendum consists of three (3) pages plus attachments.

### **CHANGES TO GENERAL REQUIREMENTS:**

1. None.

### **CHANGES TO SPECIFICATIONS:**

1. Section 01 240 00- QUALITY REUIREMENTS: Paragraph 1.10.A Replace "...attached to this Section, and as follows:" to read "...as indicated in the drawings, and as follows:"
2. Section 05 73 00 DECORATIVE METAL RAILINGS:
  - a. Subparagraph 2.6.R.2. Replace to read "Orient perforated metal with pattern horizontal as indicated on the drawings."
  - b. Paragraph 2.8.F- Delete Paragraph and subparagraph 2.8.F in their entirety.
3. Section 06 20 13 – EXTERIOR FINISH CARPENTRY: Replace specification 06 20 13 Exterior Finish Carpentry in its entirety with attached specification 06 20 13. Specification clarifies siding names and adds Engineered Wood Soffits.
4. Section 06 15 33 WOOD PATIO DECKING: Subparagraph 2.5.B.3- Replace subparagraph 3 with the following "Decking Size: 1.3 by 5 ½ inches actual.

Subparagraph 2.5.B.4- Configuration for concealed decking fasteners per manufacturer's recommendation.

5. Section 07 46 46- FIBER-CEMENT SIDING: Delete the specification section in its entirety.
6. Section 08 11 13 HOLLOW METAL DOORS AND FRAMES:
  - a. Subparagraph 2.3.B.1.d- Replace: "Model 1, Full Flush" with "Model 2, Seamless"
  - b. Paragraph 2.4.B: Replace "Heavy-Duty Doors and Frames: ANSI/SDI A250.8, Level 2; ANSI/SDI A250.4, Level B" with "Extra-Heavy-Duty Doors and Frames: ANSI/SDI A250.8, Level 3: ANSI/SDI A250.4, Level A.
  - c. Subparagraph 2.4.B.1.d.- Replace "Model 1, Full Flush" with "Model 2, Seamless".
7. Section 08 14 16 FLUSH WOOD DOORS: 2.1.A.4.a- Replace "Select white ash" with "White maple".
8. Section 08 54 13 FIBERGLASS WINDOWS:
  - a. 2.3.F- Add Paragraph and associated subparagraphs to read as follows, renumber remaining sections:
 

"F. Laminated Glass: ASTM C 1172. Use materials that have a proven record of no tendency to bubble, discolor, or lose physical and mechanical properties after fabrication and installation.

    1. Construction: Laminate glass with polyvinyl butyral interlayer to comply with interlayer manufacturer's written instructions.
    2. Interlayer Thickness: Provide thickness not less than that indicated and as needed to comply with requirements.
    3. Interior Layer color: Obscured. Pattern as selected from manufacturer full range."
  - b. 2.3.H- Add Paragraph and associated subparagraphs to read as follows, renumber remaining sections:
 

"H. Insulating- Laminated Glass Units: ASTM E2190(GL-3T).

    1. Exterior Glass: ASTM C1036, Type 1, Class 1, q3.
    2. Tint: Clear.
    3. Kind: Fully tempered.
    4. Lites: Two.
    5. Filling: Fill space between glass lites with argon.
    6. Low-E Coating: Pyrolytic on second surface.
    7. Interior Glass: Laminated Glass: ASTM C 1172"
9. Section 09 64 00 WOOD FLOORING: Replace Paragraph 2.4.A to read "Subfloor: As specified on Structural drawings."

10. Section 09 91 14 EXTERIOR PAINTING (MPI STANDARDS): Subparagraph 3.8.B.1.a- replace “...alkyd for exterior wood, MPI #5” with ...”latex for exterior wood, MPI #6.”
11. Section 09 91 24 INTERIOR PAINTING (MPI STANDARDS): Subparagraph 3.6.B.1- Delete Subparagraph starting with “Alkyd Floor Enamel System...” and ending with “...low gloss, MPI #59.” Renumber section.
12. Section 10 44 13 FIRE PROTECTION CABINETS: Replace specification 10 44 13 Fire Protection Cabinets in its entirety with attached specification 10 44 13. Specification indicates two different types of fire extinguisher cabinets.

### **CHANGES TO DRAWINGS:**

Note: Revisions for this addendum on attached reissued sheets are clouded and labeled “Delta 2.”

1. Sheet 34 – ARCHITECTURAL ABBREVIATIONS, SYMBOLS, & NOTES: Revise General Notes box, section V. SIGNAGE, Notes B to read “B. PROVIDE EXIT SIGNAGE AT EACH BUILDING EXIT AND AT EACH EXIT IN ASSEMBLY SPACE WHERE MORE THAN ONE EXIT IS REQUIRED. PROVIDE SIGNAGE TYPE 'A', COPY TEXT TO READ EXIT.  
  
C. PROVIDE SIGNAGE AT EACH FIRE EXTINGUISHER OR FIRE EXTINGUISHER CABINET. REFER TO SIGNAGE TYPE 'C' ON SHEET 95.”
2. Sheet 40 – COMMUNITY PLATFORMS – SECTIONS: Remove sheet from set.
3. Sheet 41 – COMMUNITY PLATFORMS – SECTIONS CONT.: Remove sheet from set.
4. Sheet 43 – SHOWERHOUSE – FLOOR PLAN: Replace sheet in its entirety.
5. Sheet 45 – SHOWERHOUSE – ROOF PLANS: Remove vent hood hatch and coded note 5.
6. Sheet 47 – SHOWERHOUSE – EXTERIOR ELEVATIONS: Replace sheet in its entirety.
7. Sheet 48 – SHOWERHOUSE – EXTERIOR ELEVATIONS: Revise General Note C to read  
“C. PROVIDE STAMPED CONCRETE FORM FOR EXTERIOR CONCRETE WALLS. BASIS OF DESIGN FITZGERALD FORMLINERS IN ESTRELLA WAVE PATTERN.”
8. Sheet 56 – SHOWERHOUSE – INTERIOR ELEVATIONS: Replace sheet in its entirety.

### **ATTACHMENTS:**

Specification Sections 06 20 13, 10 44 13  
Drawing Sheets 43, 47, 56

**END ADDENDUM NO. 02**

## SECTION 062013 - EXTERIOR FINISH CARPENTRY

### PART 1 - GENERAL

#### 1.1 SUMMARY

A. Section Includes:

1. Engineered wood siding, trim and soffit.
2. Engineered wood soffits.

#### 1.2 ACTION SUBMITTALS

A. Product Data: For each type of process and factory-fabricated product. Indicate component materials, dimensions, profiles, textures, and colors and include construction and application details.

1. Include data for wood-preserved treatment from chemical-treatment manufacturer and certification by treating plant that treated materials comply with requirements. Indicate type of preservative used and net amount of preservative retained. Include chemical-treatment manufacturer's written instructions for finishing treated material.
2. For products receiving a waterborne treatment, include statement that moisture content of treated materials was reduced before shipment to Project site to levels specified.

B. Samples for Initial Selection: For each type of product involving selection of colors, profiles, or textures.

C. Samples for Verification:

1. For each species and cut of lumber and panel products, with half of exposed surface finished; 50 sq. in. for lumber and 8 by 10 inches for panels.
2. For engineered wood siding , trim, and soffits , 50 sq. in. for board types and 8 by 10 inches for panels.

#### 1.3 INFORMATIONAL SUBMITTALS

A. Compliance Certificates:

1. For lumber that is not marked with grade stamp.
2. For preservative-treated wood that is not marked with treatment-quality mark.

B. Evaluation Reports: For the following, from ICC-ES:

1. Wood-preserved-treated wood.

- C. Sample Warranties: For manufacturer's warranties.

#### 1.4 DELIVERY, STORAGE, AND HANDLING

- A. Stack lumber, plywood, and other panels flat with spacers between each bundle to provide air circulation.
  - 1. Protect materials from weather by covering with waterproof sheeting, securely anchored.
  - 2. Provide for air circulation around stacks and under coverings.

#### 1.5 FIELD CONDITIONS

- A. Weather Limitations: Proceed with installation only when existing and forecast weather conditions permit work to be performed and at least one coat of specified finish can be applied without exposure to rain, snow, or dampness.
- B. Do not install finish carpentry materials that are wet, moisture damaged, or mold damaged.
  - 1. Indications that materials are wet or moisture damaged include, but are not limited to, discoloration, sagging, or irregular shape.
  - 2. Indications that materials are mold damaged include, but are not limited to, fuzzy or splotchy surface contamination and discoloration.

#### 1.6 WARRANTY

- A. Engineered Wood Manufacturer's Warranty: Manufacturer agrees to repair or replace components of engineered wood siding and soffits that fail in materials or workmanship within specified warranty period.
  - 1. Failures include, but are not limited to, deformation or deterioration beyond normal weathering.
  - 2. Warranty Period for Factory-Applied Finish: Five years from date of Substantial Completion.
  - 3. Warranty Period: Siding and Soffits (Excluding Finish), 25 years from date of Substantial Completion.

### PART 2 - PRODUCTS

#### 2.1 MATERIALS, GENERAL

- A. Lumber: DOC PS 20 and applicable rules of grading agencies indicated. If no grading agency is indicated, comply with applicable rules of any rules-writing agency certified by the American Lumber Standard Committee's (ALSC) Board of Review. Grade lumber by an agency certified by the ALSC's Board of Review to inspect and grade lumber under the rules indicated.

1. Factory mark each piece of lumber with grade stamp of inspection agency, indicating grade, species, moisture content at time of surfacing, and mill.
2. For exposed lumber, mark grade stamp on end or back of each piece .

B. Softwood Plywood: DOC PS 1.

C. Hardboard: ANSI A135.4.

## 2.2 WOOD-PRESERVATIVE-TREATED MATERIALS

A. Water-Repellent Preservative Treatment by Nonpressure Process: AWWA N1; dip, spray, flood, or vacuum-pressure treatment.

1. Use chemical formulations that do not bleed through or otherwise adversely affect finishes. Do not use colorants in solution to distinguish treated material from untreated material.
2. Application: Items not required to be pressure-preservative treated .

B. Preservative Treatment by Pressure Process: AWWA U1; Use Category UC3a .

1. Kiln dry lumber and plywood after treatment to a maximum moisture content of 19 and 18 percent, respectively.
2. Preservative Chemicals: Acceptable to authorities having jurisdiction and containing no arsenic or chromium .
3. For exposed items indicated to receive transparent finish, do not use chemical formulations that contain colorants or that bleed through or otherwise adversely affect finishes.
4. Do not use material that is warped or does not comply with requirements for untreated material.
5. Mark lumber with treatment-quality mark of an inspection agency approved by the ALSC's Board of Review.
  - a. For exposed lumber indicated to receive a stained or natural finish, mark end or back of each piece .
6. Mark plywood with appropriate classification marking of an inspection agency acceptable to authorities having jurisdiction.
  - a. For exposed plywood indicated to receive a stained or natural finish, mark back of each piece.
7. Application: All exterior lumber and plywood .

## 2.3 ENGINEERED WOOD SIDING

A. Basis-of-Design Product: Subject to compliance with requirements, provide Louisiana-Pacific Corporation Smartsiding or comparable product by one of the following:

1. Certainteed
  2. KWP Eco-Side
- B. Engineered Wood Siding: ANSI A135.6, primed with manufacturer's standard exterior primer (Nickel Gap Siding base of design) /siding-1 installed vertical.
1. Type:
    - a. 1/2-inch- thick by 7-inch- wide, beaded-edge lap siding.
  2. Texture: Wood grain or smooth refer to the drawings .
- C. Engineered Wood Vertical Siding (board and batt/ siding-1): ANSI A135.6, primed with manufacturer's standard exterior primer.
1. Size: 3/8 inch thick by 16-inches wide by 16 feet long, smooth panel siding covered by a batten at the panel joints.
  2. Texture: Smooth
- D. Engineered wood trim: From same manufacturer as engineered siding.

#### 2.4 ENGINEERED WOOD SOFFITS/ PORCH CEILINGS

- A. Basis-of-Design Product: Subject to compliance with requirements, provide Louisiana-Pacific Corporation, Smartsiding as none vented soffit panel/porch ceiling or comparable product by one of the following:
1. Collins Products LLC
  2. Georgia-Pacific Gypsum LLC
- B. Engineered Wood Soffits Porch Ceilings: ANSI A135.6, primed with manufacturer's standard exterior primer.
1. Type: 1/2-inch- thick flat panels.
  2. Texture: Smooth .
  3. Colors, Textures, and Patterns: As selected by Architect from manufacturer's full range if not indicated on the drawings.

#### 2.5 MISCELLANEOUS MATERIALS

- A. Fasteners for Exterior Finish Carpentry: Provide nails or screws, in sufficient length to penetrate not less than 1-1/2 inches into wood substrate.
1. For face-fastening siding, provide ringed-shank siding nails or hot-dip galvanized-steel siding nails unless otherwise indicated by manufacturer.
  2. For redwood, provide stainless steel fasteners.
  3. For prefinished items, provide matching prefinished aluminum fasteners where face fastening is required.

4. For pressure-preservative-treated wood, provide stainless steel or as recommended by pressure-preservative manufacturers fasteners.
  5. For applications not otherwise indicated, provide hot-dip galvanized-steel fasteners.
- B. Wood Glue: Waterproof resorcinol glue recommended by manufacturer for exterior carpentry use.
- C. Flashing: Comply with requirements in Section 076200 "Sheet Metal Flashing and Trim" for flashing materials installed in exterior finish carpentry.
1. Horizontal Joint Flashing for Panel Siding: Preformed, aluminum, Z-shaped flashing.

## 2.6 FABRICATION

- A. Back out or kerf backs of standing and running trim wider than 5 inches, except members with ends exposed in finished work.
- B. Ease edges of lumber less than 1 inch in nominal thickness to 1/16-inch radius and edges of lumber 1 inch or more in nominal thickness to 1/8-inch radius.

## PART 3 - EXECUTION

### 3.1 EXAMINATION

- A. Examine substrates, with Installer present, for compliance with requirements for installation tolerances and other conditions affecting performance of the Work.
- B. Examine finish carpentry materials before installation. Reject materials that are wet, moisture damaged, and mold damaged.
- C. Proceed with installation only after unsatisfactory conditions have been corrected.

### 3.2 PREPARATION

- A. Clean substrates of projections and substances detrimental to application.
- B. Prime lumber and moldings to be painted, including both faces and edges, unless factory primed.
1. Cut to required lengths and prime ends.
  2. Comply with requirements in Section 099113 "Exterior Painting."

### 3.3 INSTALLATION, GENERAL

- A. Do not use materials that are unsound, warped, improperly treated or finished, inadequately

seasoned, or too small to fabricate with proper jointing arrangements.

1. Do not use manufactured units with defective surfaces, sizes, or patterns.
- B. Install exterior finish carpentry level, plumb, true, and aligned with adjacent materials.
1. Use concealed shims where necessary for alignment.
  2. Scribe and cut exterior finish carpentry to fit adjoining work.
  3. Refinish and seal cuts as recommended by manufacturer.
  4. Install to tolerance of 1/8 inch in 96 inches for level and plumb. Install adjoining exterior finish carpentry with 1/32-inch maximum offset for flush installation and 1/16-inch maximum offset for reveal installation.
  5. Coordinate exterior finish carpentry with materials and systems in or adjacent to it.
  6. Provide cutouts for mechanical and electrical items that penetrate exterior finish carpentry.

### 3.4 INSTALLATION OF STANDING AND RUNNING TRIM

- A. Install trim with minimum number of joints as is practical, using full-length pieces from maximum lengths of lumber available. Do not use pieces less than 24 inches long, except where necessary.
1. Use scarf joints for end-to-end joints.
  2. Stagger end joints in adjacent and related members.
- B. Install engineer wood trim to comply with manufacturer's written instructions.
- C. Fit exterior joints to exclude water.
1. Cope at returns and miter at corners to produce tight-fitting joints, with full-surface contact throughout length of joint.
  2. Plane backs of casings to provide uniform thickness across joints, where necessary for alignment.
- D. Where face fastening is unavoidable, countersink fasteners, fill surface flush, and sand unless otherwise indicated.

### 3.5 INSTALLATION OF SIDING

- A. Install siding to comply with manufacturer's written instructions and warranty requirements .
- B. Engineered Wood Siding:
1. Install engineered wood siding to comply with manufacturer's written instructions.
  2. Install panels with edges over framing or blocking.
  3. Leave 3/16-inch gap at perimeter, openings, and horizontal panel joints unless otherwise recommended by panel manufacturer.
  4. Seal butt joints at inside and outside corners and at trim locations.

5. Install continuous metal flashing at horizontal panel joints.
6. Apply battens and corner trim as indicated.
7. Conceal fasteners to greatest practical extent by placing in grooves of siding pattern or by concealing with applied trim or battens as detailed.

- C. Flashing: Install metal flashing as indicated on Drawings and as recommended by siding manufacturer.
- D. Finish: Apply finish within two weeks of installation.

### 3.6 INSTALLATION OF ENGINEERED WOOD SOFFITS/ PORCH CEILINGS

- A. Install soffit panels to comply with manufacturer's written instructions and warranty requirements.

### 3.7 ADJUSTING

- A. Replace exterior finish carpentry that is damaged or does not comply with requirements.
1. Exterior finish carpentry may be repaired or refinished if work complies with requirements and shows no evidence of repair or refinishing.
- B. Adjust joinery for uniform appearance.

### 3.8 CLEANING

- A. Clean exterior finish carpentry on exposed and semiexposed surfaces.
- B. Touch up factory-applied finishes to restore damaged or soiled areas.

### 3.9 PROTECTION

- A. Protect installed products from damage from weather and other causes during construction.
- B. Remove and replace finish carpentry materials that are wet, moisture damaged, and mold damaged.
1. Indications that materials are wet or moisture damaged include, but are not limited to, discoloration, sagging, or irregular shape.
  2. Indications that materials are mold damaged include, but are not limited to, fuzzy or splotchy surface contamination and discoloration.

END OF SECTION 062013

## SECTION 104413 - FIRE PROTECTION CABINETS

### PART 1 - GENERAL

#### 1.1 SUMMARY

A. Section Includes:

1. Fire-protection cabinets for the following:
  - a. Portable fire extinguisher.

B. Related Requirements:

1. Section 104416 "Fire Extinguishers" for portable, hand-carried fire extinguishers accommodated by fire-protection cabinets.

#### 1.2 ACTION SUBMITTALS

A. Product Data: For each type of product.

1. Show door hardware, cabinet type, trim style, and panel style. Include roughing-in dimensions and details showing recessed-, semirecessed-, or surface-mounting method and relationships of box and trim to surrounding construction.
2. Show location of knockouts for hose valves.

B. Shop Drawings: For fire-protection cabinets.

1. Include plans, elevations, sections, details, and attachments to other work.

C. Product Schedule: For fire-protection cabinets. Indicate whether recessed, semirecessed, or surface mounted. Coordinate final fire-protection cabinet schedule with fire-extinguisher schedule to ensure proper fit and function.

#### 1.3 CLOSEOUT SUBMITTALS

A. Maintenance Data: For fire-protection cabinets to include in maintenance manuals.

#### 1.4 COORDINATION

A. Coordinate size of fire-protection cabinets to ensure that type and capacity of fire extinguishers indicated are accommodated.

B. Coordinate sizes and locations of fire-protection cabinets with wall depths.

## PART 2 - PRODUCTS

### 2.1 SOURCE LIMITATIONS

- A. Obtain fire-protection cabinets, accessories, and fire extinguishers from single source from single manufacturer.

### 2.2 FIRE-PROTECTION CABINET

- A. Basis-of-Design Product: Subject to compliance with requirements, provide Safety One Industries, Heavy Duty Outdoor Series or comparable product by one of the following:
1. Babcock-Davis
  2. Guardian Fire Equipment, Inc
  3. JL Industries; Activar Construction Products Group, Inc.
  4. Larsen's Manufacturing Company
- B. Fire-Protection Cabinet Type (FEC-1): Suitable for fire extinguisher. Rated for exterior use.
1. Surface mounted Cabinet: Cabinet box fully exposed and mounted directly on wall or post without trim.
  2. Cabinet Construction: Nonrated.
  3. Cabinet Material: 16 gauge galvanized steel with sloped roof.
- C. Semirecessed Cabinet: (FEC-2) One-piece combination trim and perimeter door frame overlapping surrounding wall surface, with exposed trim face and wall return at outer edge (backbend).
1. Rolled-Edge Trim: 2-1/2-inch backbend depth.
  2. Cabinet Trim Material: Aluminum sheet Same material and finish as door .
- D. Door Material: Steel sheet .
- E. Door Style: Flush opaque panel, frameless, with no exposed hinges .
- F. Door Hardware: Manufacturer's standard door-operating hardware of proper type for cabinet type, trim style, and door material and style indicated.
1. Provide projecting door pull and friction latch .
  2. Provide permitting door to open 180 degrees.
- G. Accessories:
1. Mounting Bracket: Manufacturer's standard steel, designed to secure fire extinguisher to fire-protection cabinet, of sizes required for types and capacities of fire extinguishers indicated, with plated or baked-enamel finish.
  2. Identification: Lettering complying with authorities having jurisdiction for letter style, size, spacing, and location. Locate as directed by Architect .

- a. Identify fire extinguisher in fire-protection cabinet with the words " FIRE EXTINGUISHER ."
  - 1) Location: Applied to cabinet door .
  - 2) Application Process: Pressure-sensitive vinyl letters .
  - 3) Lettering Color: White .
  - 4) Orientation: Horizontal .
- b. Cabinet operations "Pull Firmly to Open".

H. Materials:

1. Cold-Rolled Steel: ASTM A 1008/A1008M, Commercial Steel (CS), Type B. Galvanized 16- gauge.
  - a. Finish: Factory primed for field painting.
2. Tempered Float Glass: ASTM C1048, Kind FT, Condition A, Type I, Quality q3, 3 mm thick, Class 1 (clear) .

2.3 FABRICATION

- A. Fire-Protection Cabinets: Provide manufacturer's standard box (tub) with trim, frame, door, and hardware to suit cabinet type, trim style, and door style indicated.
  1. Weld joints and grind smooth.
  2. Miter corners and grind smooth.
  3. Provide factory-drilled mounting holes.
- B. Cabinet Doors: Fabricate doors according to manufacturer's standards, from materials indicated and coordinated with cabinet types and trim styles.
  1. Fabricate door frames with tubular stiles and rails and hollow-metal design, minimum 1/2 inch thick.
  2. Fabricate door frames of one-piece construction with edges flanged.
  3. Miter and weld perimeter door frames and grind smooth.
- C. Cabinet Trim: Fabricate cabinet trim in one piece with corners mitered, welded, and ground smooth.

2.4 GENERAL FINISH REQUIREMENTS

- A. Comply with NAAMM's AMP 500, "Metal Finishes Manual for Architectural and Metal Products," for recommendations for applying and designating finishes.
- B. Protect mechanical finishes on exposed surfaces of fire-protection cabinets from damage by applying a strippable, temporary protective covering before shipping.

- C. Finish fire-protection cabinets after assembly.
- D. Appearance of Finished Work: Noticeable variations in same piece are unacceptable. Variations in appearance of adjoining components are acceptable if they are within the range of approved Samples and are assembled or installed to minimize contrast.

### PART 3 - EXECUTION

#### 3.1 EXAMINATION

- A. Examine walls and partitions for suitable framing depth and blocking where semirecessed cabinets will be installed.
- B. Proceed with installation only after unsatisfactory conditions have been corrected.

#### 3.2 PREPARATION

- A. Prepare recesses for semirecessed fire-protection cabinets as required by type and size of cabinet and trim style.

#### 3.3 INSTALLATION OF FIRE-PROTECTION CABINETS

- A. General: Install fire-protection cabinets in locations and at mounting heights indicated or, if not indicated, at height indicated below:
  - 1. Fire-Protection Cabinet Mounting Height: 42 inches above finished floor to top of fire extinguisher.
- B. Fire-Protection Cabinets: Fasten cabinets to structure, square and plumb.
  - 1. Unless otherwise indicated, provide recessed fire-protection cabinets. If wall thickness is inadequate for recessed cabinets, provide semirecessed fire-protection cabinets.
  - 2. Provide inside latch and lock for break-glass panels.
  - 3. Fasten mounting brackets to inside surface of fire-protection cabinets, square and plumb.
- C. Identification:
  - 1. Apply vinyl lettering at locations indicated.

#### 3.4 ADJUSTING AND CLEANING

- A. Remove temporary protective coverings and strippable films, if any, as fire-protection cabinets are installed unless otherwise indicated in manufacturer's written installation instructions.
- B. Adjust fire-protection cabinet doors to operate easily without binding. Verify that integral

locking devices operate properly.

- C. On completion of fire-protection cabinet installation, clean interior and exterior surfaces as recommended by manufacturer.
- D. Touch up marred finishes, or replace fire-protection cabinets that cannot be restored to factory-finished appearance. Use only materials and procedures recommended or furnished by fire-protection cabinet and mounting bracket manufacturers.
- E. Replace fire-protection cabinets that have been damaged or have deteriorated beyond successful repair by finish touchup or similar minor repair procedures.

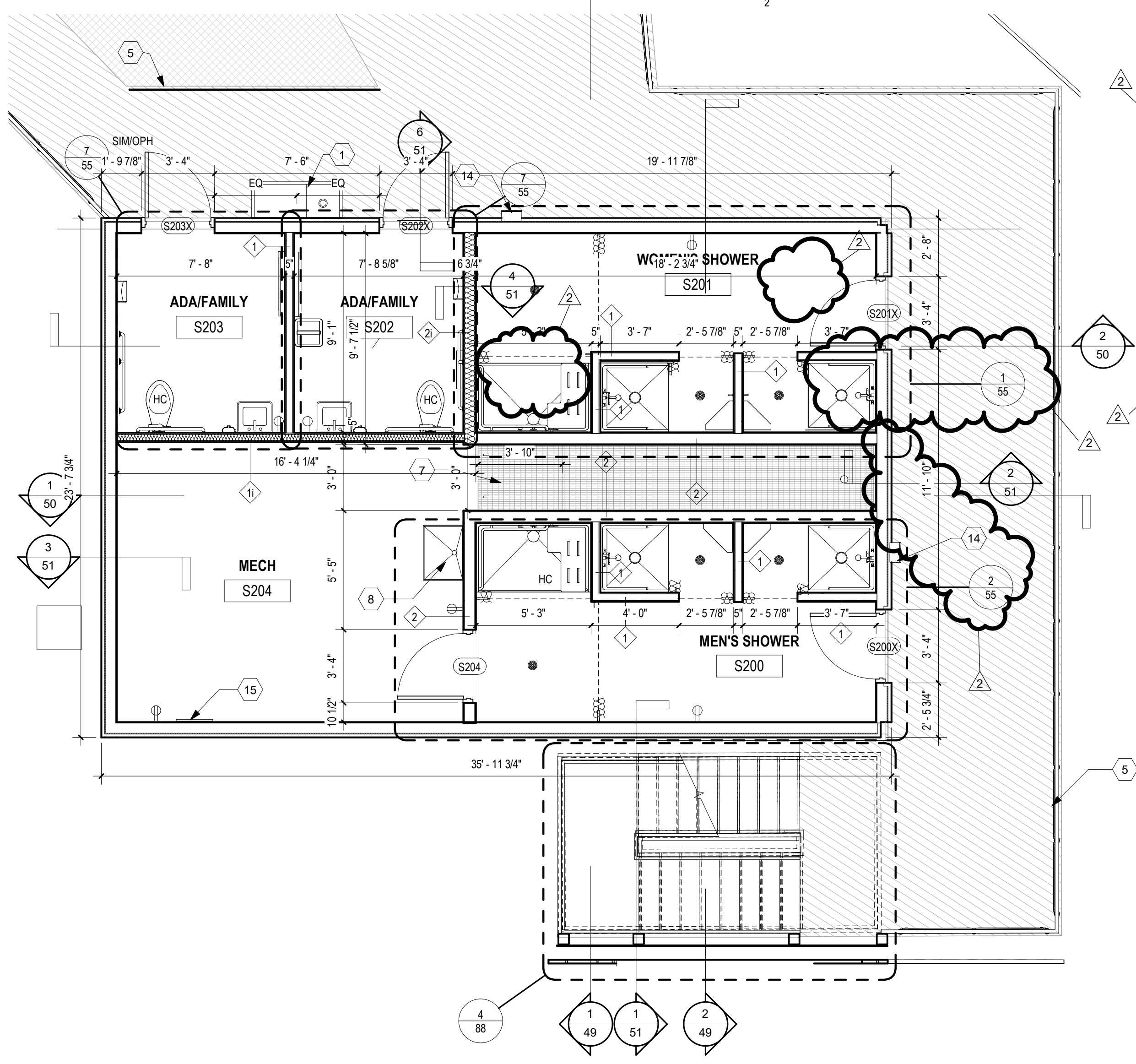
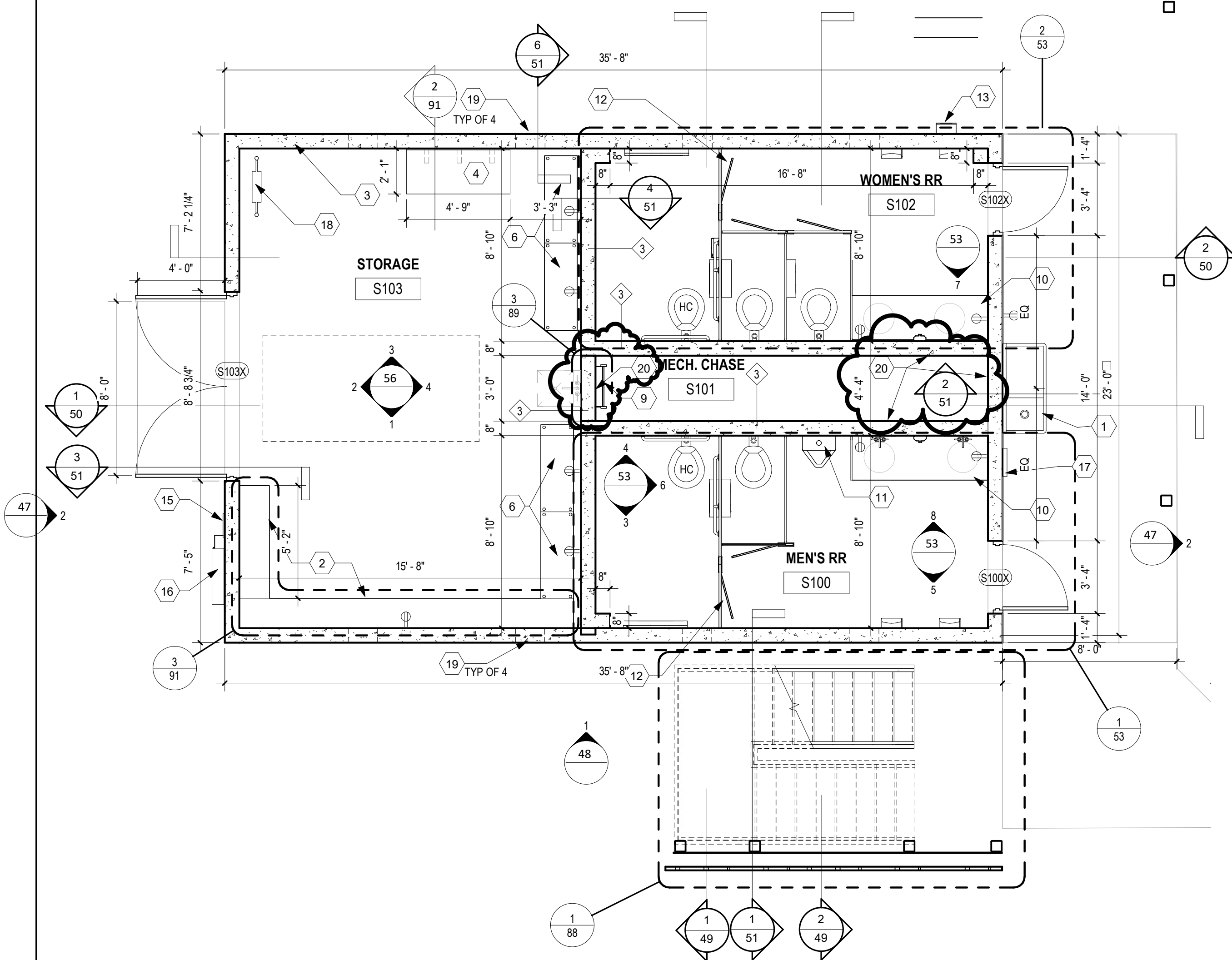
END OF SECTION 104413

**GENERAL NOTES**

- A. INTERIOR PARTITIONS ARE TYPE 1 UON. REFER TO "PARTITION TYPE DETAILS" FOR PARTITION TYPES.
- B. REFER TO FINISH SCHEDULE SHEET FOR FINISH LOCATIONS AND COLORS.
- C. REFER TO "ARCHITECTURAL ABBREVIATIONS, SYMBOLS, & NOTES" FOR FIXTURE MOUNTING HEIGHTS AND TYPES.
- D. PROVIDE FURNITURE INDICATED. REFER TO FURNITURE FLOOR PLANS.
- E. REFER TO "COMPLEX CONNECTION PLATFORM PLAN" FOR ADDITIONAL RAILING TYPES.
- F. ALL JOINT SEALANTS USED WITHIN THE 100 YEAR FLOOD ELEVATION SHALL BE RATED FOR IMMERSIBLE USE.
- G. REFER TO EXTERIOR ELEVATIONS FOR WINDOWS.

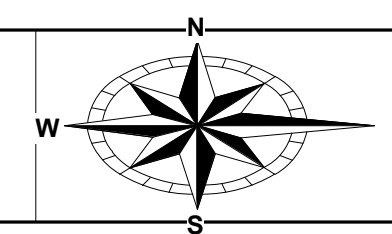
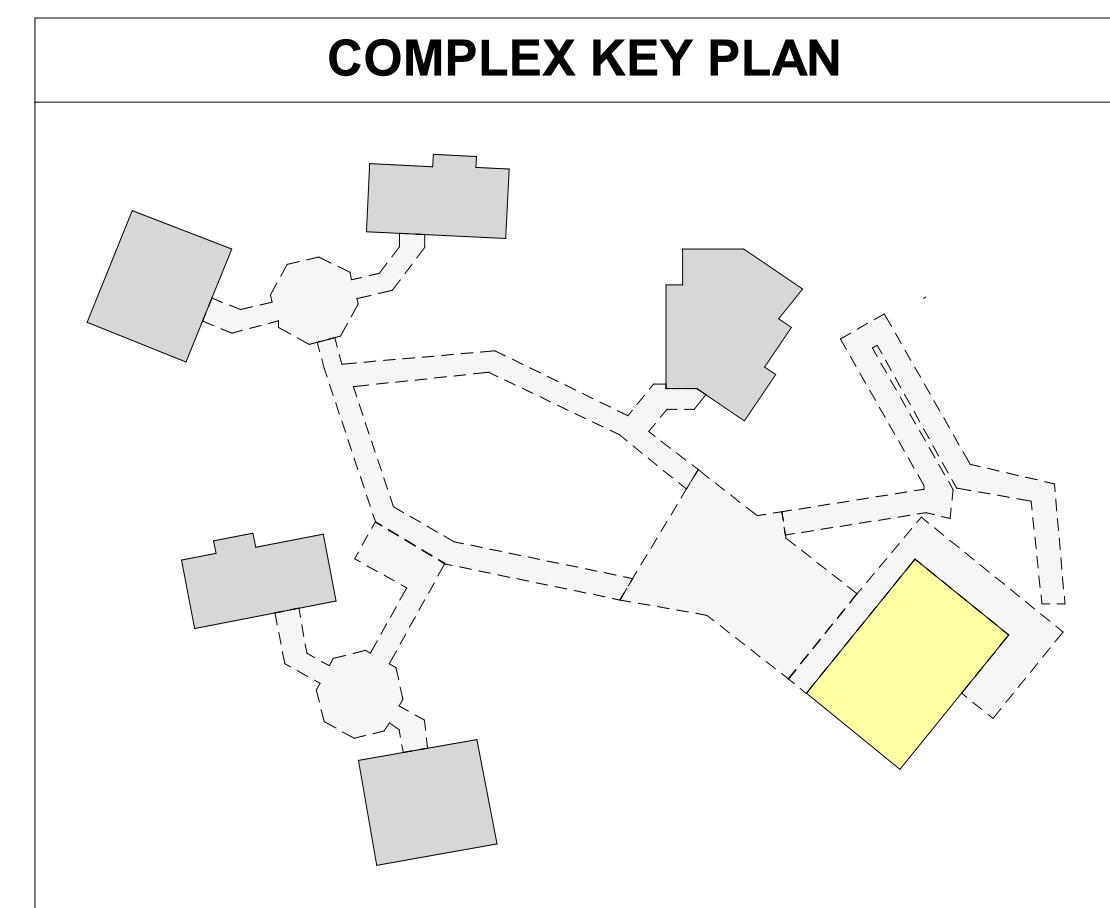
**CODED NOTES**

- 1 PROVIDE OUTDOOR COMMUNAL SINK. REFER TO PLUMBING DRAWINGS.
- 2 PROVIDE 18" D METAL WALL MOUNTED ADJUSTABLE HEIGHT SHELVING. REFER TO SHEET 31 FOR FIXTURE HEIGHTS.
- 3 PROVIDE PLYWOOD 4X8 BACKER BOARD AT 36" AFF. ON 1X FURRING STRIPS AT 16" O.C.
- 4 PROVIDE WALL MOUNTED WORK BENCH. MOUNT AT 36" AFF.
- 5 PROVIDE METAL RAILING WITH MESH INFILL PANEL, TYP. [05 52 13].
- 6 PROVIDE MOVEABLE METAL SHELVING
- 7 PROVIDE METAL GRATING HATCH DOOR ON HINGES. [05 51 19].
- 8 PROVIDE MOP SINK. REFER TO PLUMBING DRAWINGS.
- 9 PROVIDE METAL LADDER. PAINT P-X.
- 10 PROVIDE SOLID SURFACE COUNTERTOP (SS-1) WITH SINKS. REFER TO PLUMBING DRAWINGS FOR SINK.
- 11 PROVIDE PHENOLIC-CORE URINAL SCREEN.
- 12 PROVIDE PHENOLIC-CORE TOILET PARTITIONS.
- 13 PROVIDE FIRE EXTINGUISHER IN CABINET (FEC). MOUNT TO SMOOTH SURFACE ON CONCRETE WALL.
- 14 PROVIDE FIRE EXTINGUISHER IN CABINET (FEC).
- 15 PROVIDE ELECTRICAL PANEL BOARD. REFER TO MEP DRAWINGS.
- 16 PROVIDE CT CABINET, REFER TO MEP DRAWINGS.
- 17 PROVIDE BOTTLE FILLER, REFER TO MEP DRAWINGS.
- 18 PROVIDE BACKFLOW PREVENTER, REFER TO MEP DRAWINGS.
- 19 PROVIDE FLOOD VENT
- 20 PROVIDE CRYSTALLINE WATER PROOFING ON FULL HEIGHT OF INTERIOR CONCRETE WALLS [07 16 16].



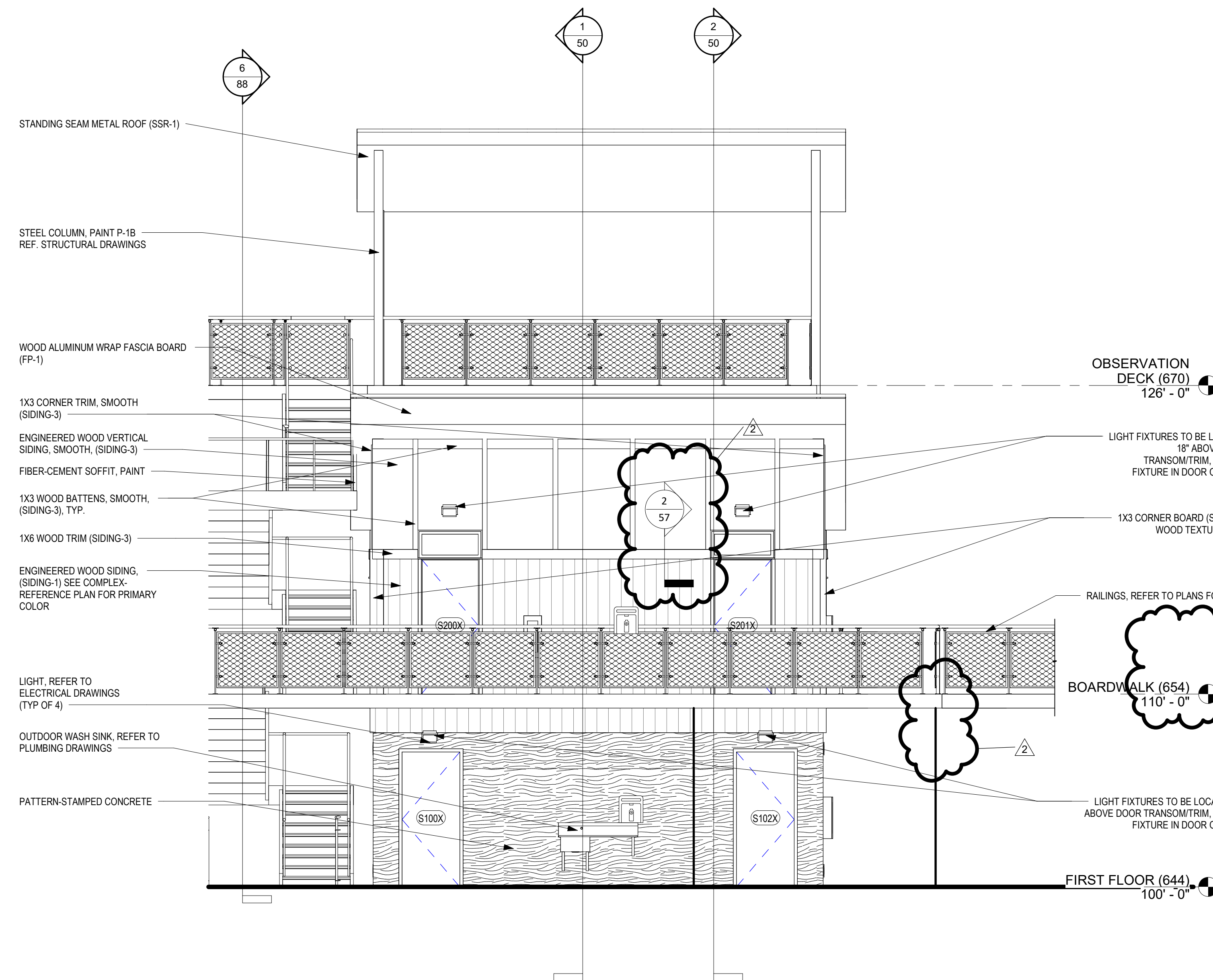
**1 SHOWERHOUSE - FIRST FLOOR PLAN**  
1/4" = 1'-0"

**2 SHOWERHOUSE - SECOND FLOOR PLAN**  
1/4" = 1'-0"

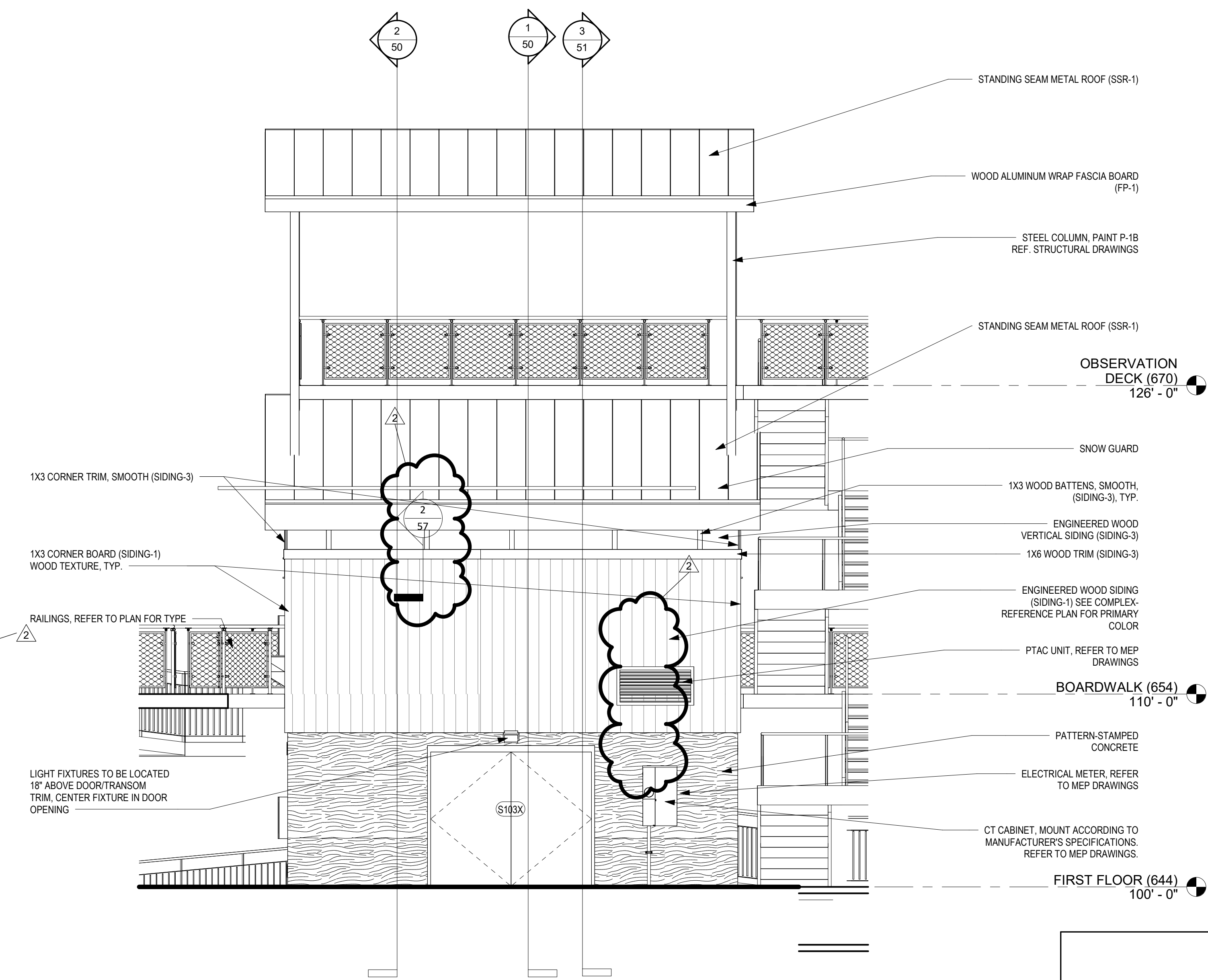


**GENERAL NOTES**

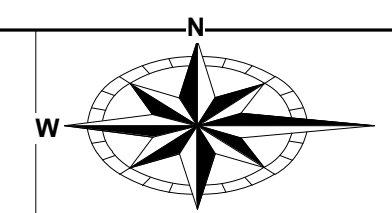
- A. REFER TO FINISH SCHEDULE SHEET FOR FINISH INFORMATION.
- B. REFER TO ARCHITECTURAL ABBREVIATIONS, SYMBOLS & NOTES FOR FIXTURE HEIGHTS.
- C. PROVIDE STAMPED CONCRETE FORM FOR EXTERIOR CONCRETE WALLS. BASIS OF DESIGN FITZGERALD FORMLINERS IN ESTRELLA WAVE PATTERN.



**1** **SHOWERHOUSE - WEST**  
1/4" = 1'-0"



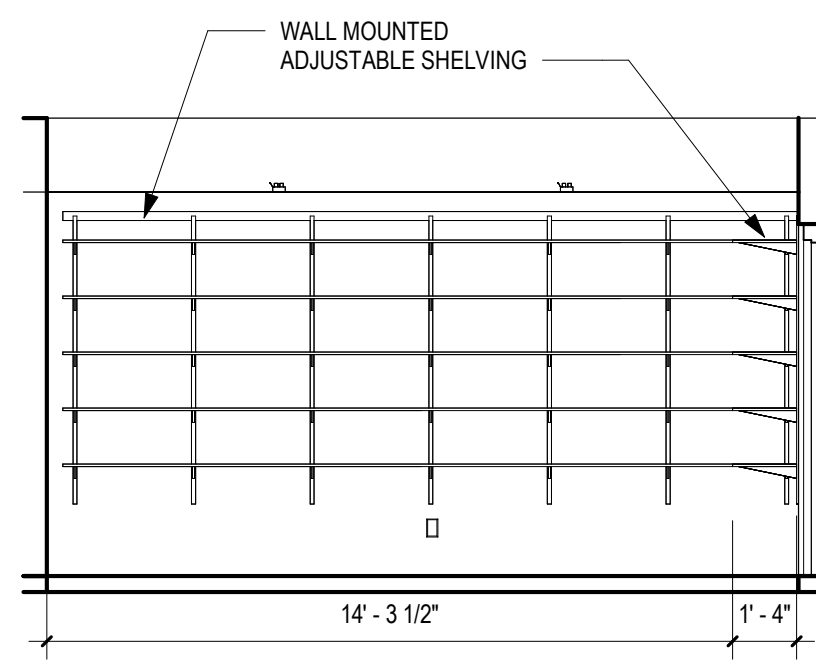
**2** **SHOWERHOUSE - EAST**  
1/4" = 1'-0"



DESIGNED BY: MF	JOB NO.: 25001
DRAWN BY: SPGB	SCALE: As indicated
CHECKED BY: MF	DATE: 12/04/2025
APPROVED BY: MF	REVISED: 01/06/2026

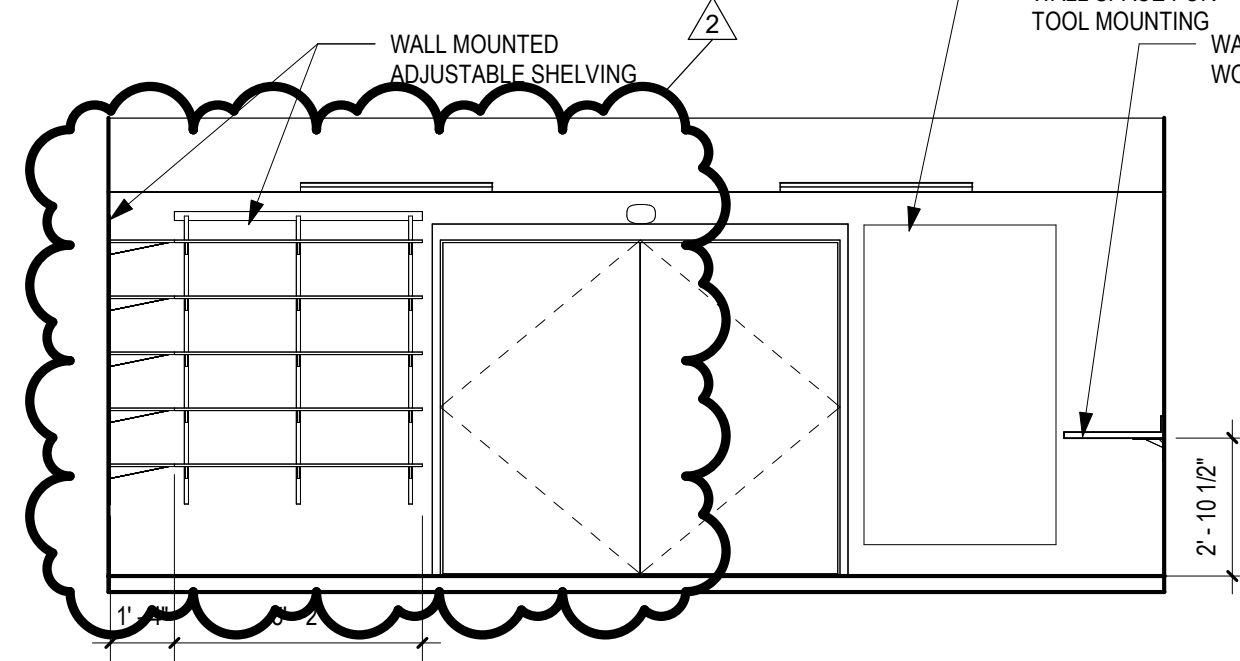
**RR ELEVATIONS GENERAL NOTES**

- A. REFER TO ARCHITECTURAL SYMBOLS, NOTES, & ABBREVIATIONS SHEET FOR FIXTURE HEIGHTS
- B. REFER TO ARCHITECTURAL CLEARANCES FOR HC CLEARANCES. NOTIFY A/E OF DISCREPANCIES.
- C. PROVIDE CT-1 AS FIELD TILE, PROVIDE 20% OF CT-2 AND 20% OF CT-3 IN RANDOM PATTERN.
- D. REFER TO TYPICAL TILE DETAIL SHEETS FOR GENERAL TILE DETAILS.



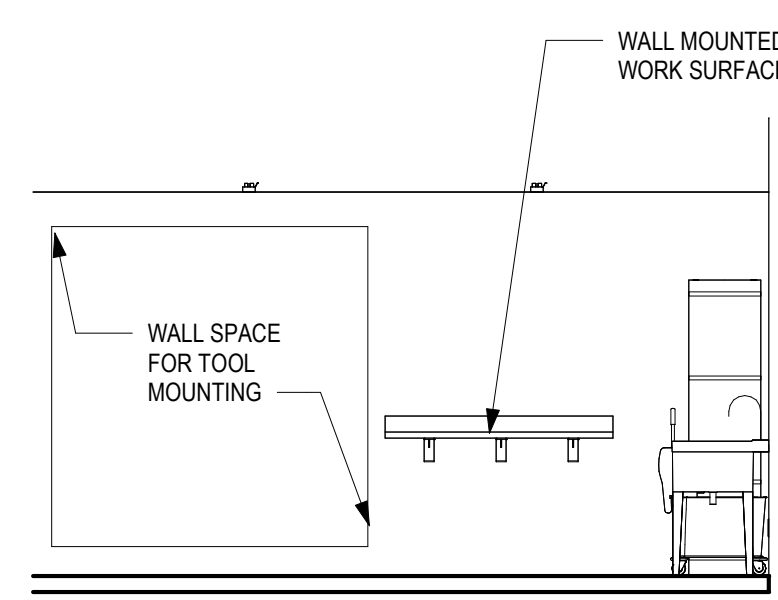
**1 SHOWERHOUSE STORAGE - NORTH WALL**

1/4" = 1'-0"



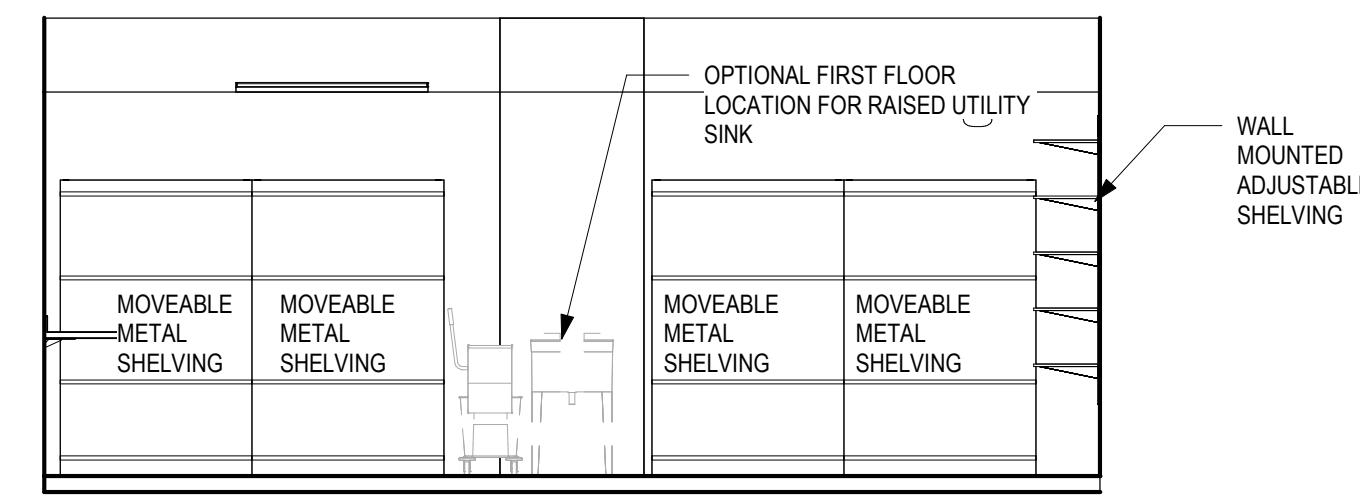
**2 SHOWERHOUSE STORAGE - EAST WALL**

1/4" = 1'-0"



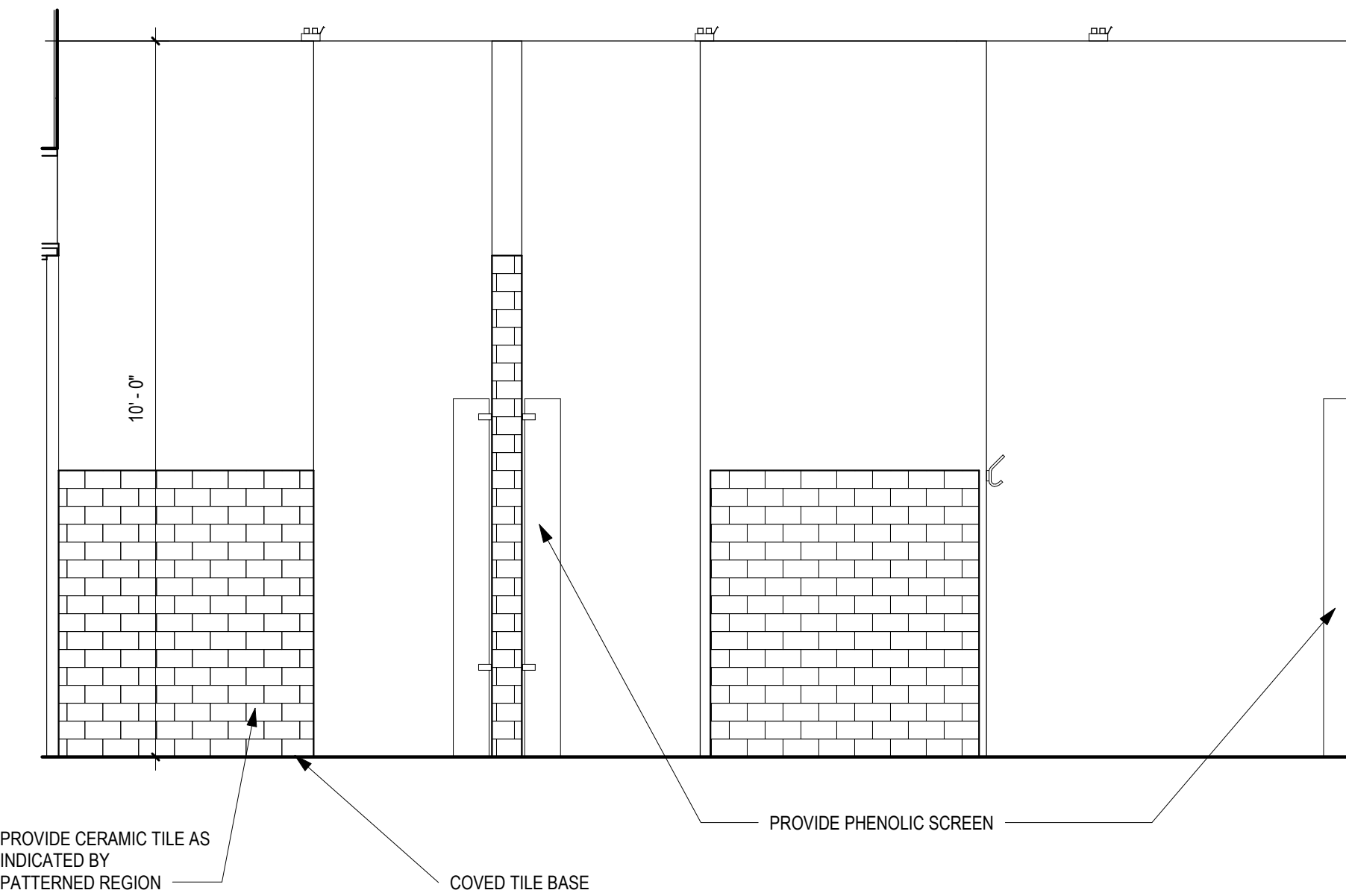
**3 SHOWERHOUSE STORAGE - SOUTH WALL**

1/4" = 1'-0"



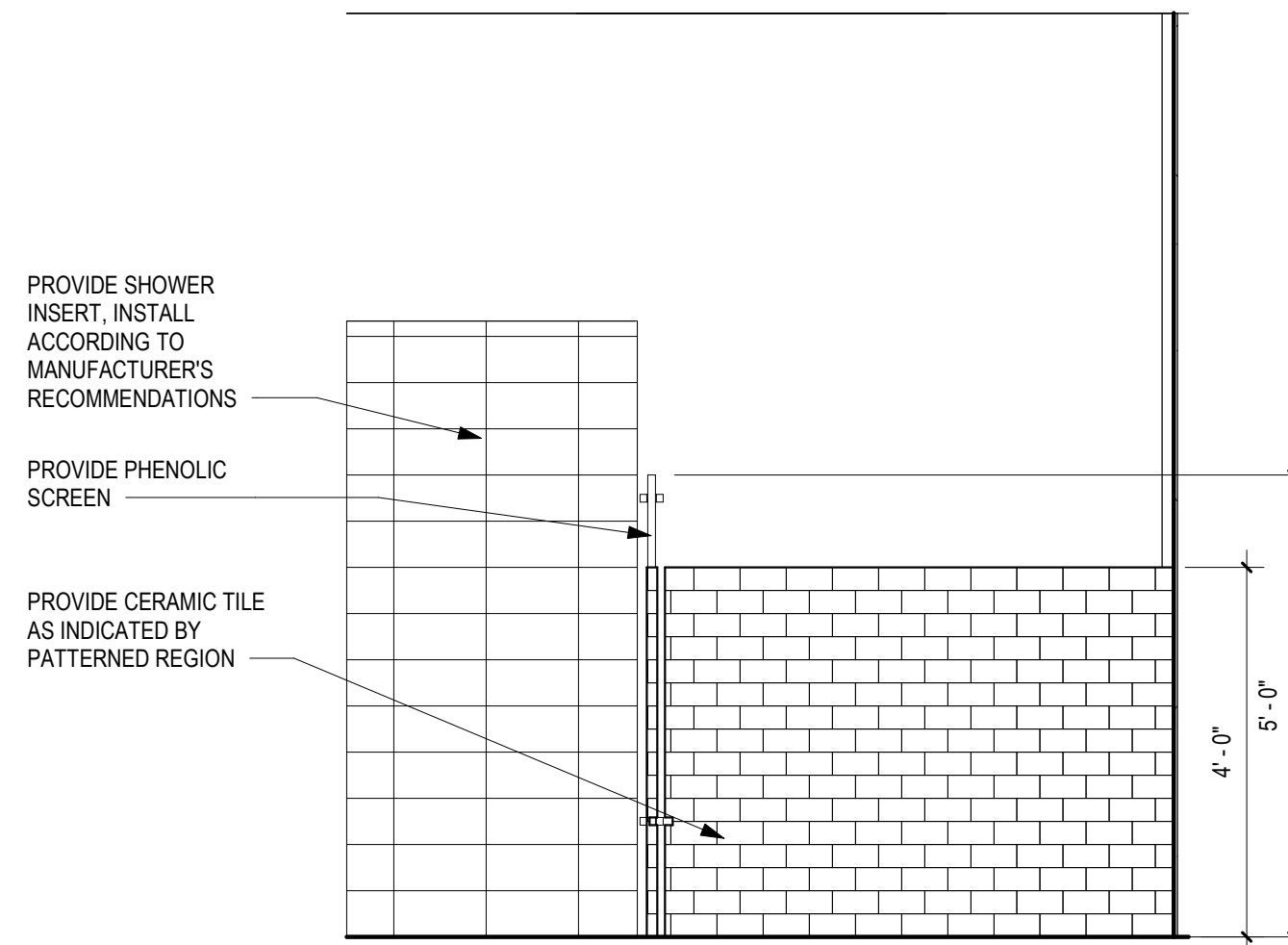
**4 SHOWERHOUSE STORAGE - WEST WALL**

1/4" = 1'-0"



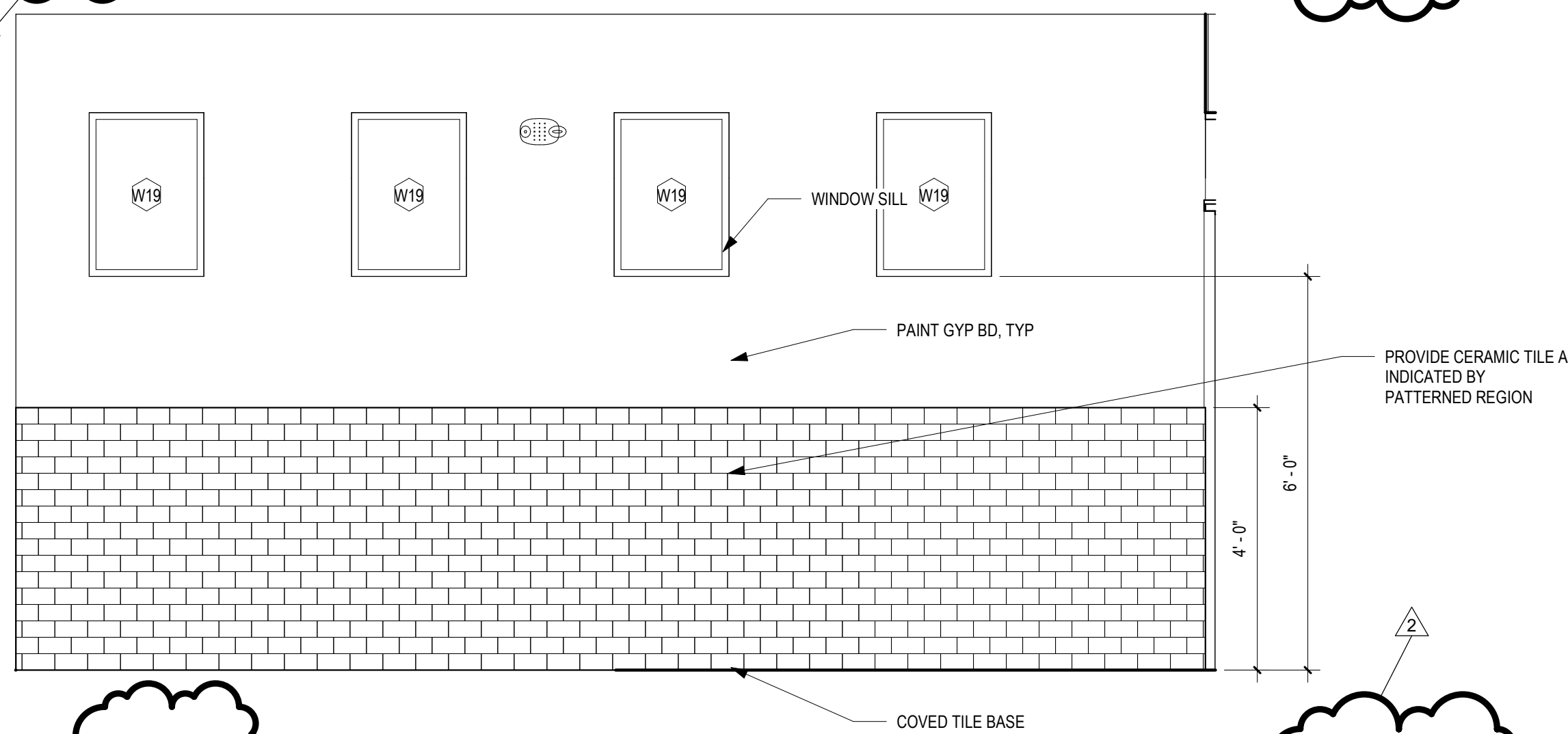
**5 ELEV - NORTH WOMEN'S SHOWERS**

1/2" = 1'-0"



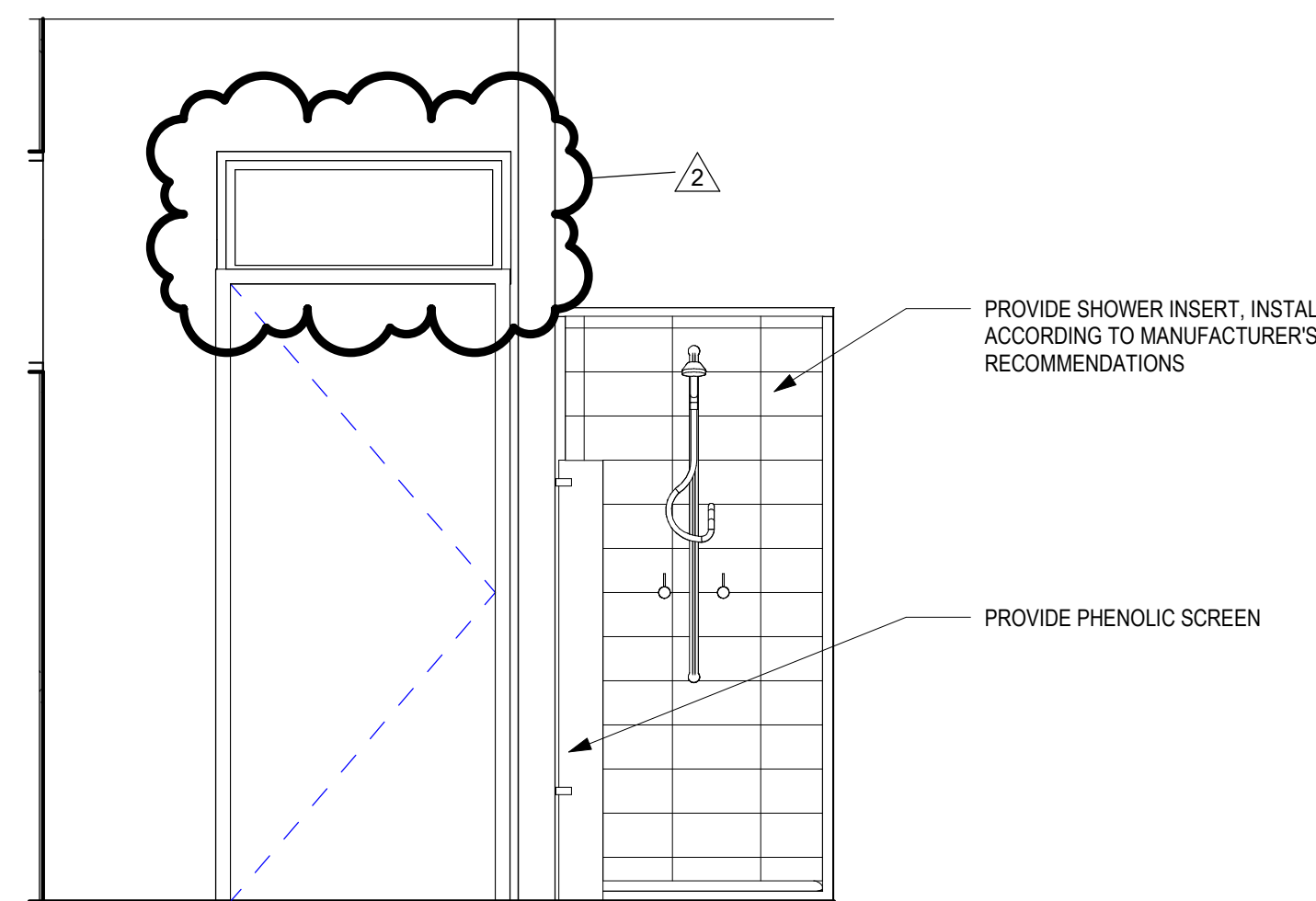
**6 ELEV - EAST WOMEN'S SHOWERS**

1/2" = 1'-0"



**7 ELEV - SOUTH WOMEN'S SHOWERS**

1/2" = 1'-0"

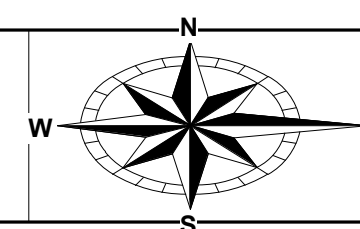


**8 ELEV - WEST WOMEN'S SHOWERS**

1/2" = 1'-0"



**SPGB Architects**  
4333-A Tuller Road  
Dublin, Ohio 43017  
Phone: (614) 771-8963



**ENGINEERING**  
Ohio Department of Natural Resources

MARY JANE THURSTON STATE PARK  
TREE HOUSE CABINS  
DNR #250014

DESIGNED BY: MF	JOB NO.: 25001
DRAWN BY: SPGB	SCALE: As indicated
CHECKED BY: MF	DATE: 12/04/2025
APPROVED BY: MF	REVISED: 01/06/2026

SHOWERHOUSE - INTERIOR ELEVATIONS