

# Ohio Department of Natural Resources

## Division of Forestry

### Annual Work Plan

For

### Maumee State Forest

For the Period of  
October 1, 2021 to September 30, 2022



***Prepared By:***

Don Schmenk, Forest Manager

Date: \_\_\_\_\_

Signature: \_\_\_\_\_

***Approved By:***

Daniel Balsler, State Forester

Date: \_\_\_\_\_

Signature: \_\_\_\_\_

## Table of Contents

	<u>Page</u>
<b>I. Forest Overview.....</b>	<b>1</b>
History & Description	
<b>II. Resource Management.....</b>	<b>1</b>
Silvicultural Practices (Scheduled Harvests, Cruising, Marking, TSI, etc.)	
Merchandising	
Minerals	
Invasives	
Boundary	
Licenses/Leases	
Insects & Disease	
Utilization & Marketing	
Certification	
Land Management Grants	
Research	
Summary (2-3 year projects)	
<b>III. Maintenance.....</b>	<b>4</b>
Buildings	
Infrastructure (water, wastewater, utilities)	
Vehicles & Equipment	
Roads	
Signage	
Residences	
Dams	
Capital Projects	
Summary (2-3 year future projects)	
<b>IV. Recreation.....</b>	<b>6</b>
Trails (APV, hiking, bridle, backpack, etc.)	
Campgrounds	
ATV Areas	
Hunting	
Miscellaneous Use	
Recreational Grants	
Summary (2-3 year future projects)	
<b>V. Wildland Fire.....</b>	<b>7</b>
Suppression	
Prevention	
Prescribed fire	
Interagency Fire Crew	
Training	
Fire Department Contacts	
Firewise	
Federal Excess Personal Property/Firefighter Property (FEPP/FFP)	
Fire Grants	

Summary (2-3 year future projects)

**VI. Law Enforcement.....9**

**VII. Employee Development.....9**

Employee Lists/Vacancies/Table of Organization

Training (tuition reimbursement, etc.)

Safety

Other Employee Development

**VIII. Public Information/Outreach.....10**

Planned Events

Partnerships

Volunteer Groups

Interpretive Programs

Summary (2-3 year future projects)

**IX. Budget.....12**

Operational Budget

Revenue

**X. Other Programs.....12**

Northwest Ohio Windbreak Program

**Appendix – Maps.....14**

## I. Forest Overview

### *History & Description:*

*A Brief History:* Northwest Ohio's topography and natural features are a result of the last glacier to pass through this area about 18,000 years ago. As the Wisconsin glacier began its retreat from Ohio, a glacial lake was formed across the northwestern corner of Ohio. As the water level fell, irregular sand beaches and a portion of the lake bottom were exposed. This area, with its poorly drained soils ranging from yellow blow sand to dark muck soil, became known locally as the Oak Openings Region. The entire 3359 acres of Maumee State Forest lies within the Oak Openings Region. Elevation of the land varies less than 29 feet over the entire forest area.

The Maumee State Forest purchase unit came about as a post-World War II initiative to increase the number and acres of state forest and forest parks in Ohio. In 1945, the Division of Forestry published "A Twenty-year Plan for establishing a More Adequate System of State Forests and Forest parks in Ohio." The plan called for seven more State Forests or Forest parks. Acquisition of land for Maumee State Forest was initiated in 1946. Most of the land that makes up the present forest was purchased between 1946 -1953. In 1996, the Bucher and Kreps Family donated 36 acres of land in Compartment A7. Most recent acquisitions include the Rusin, Filzer, Jeffries and Thomas tracts (91 acres total) in 2013, TNC-Hight Tract (113 acres) in 2015, the Carter Tract (24 acres) in 2019 and the Van Order H2Ohio Tract (31 acres) in 2020.

In 1948, the first plantations were started in abandoned farm fields. By 1954, drier old fields had been planted to pine plantations and wetter field areas to hardwoods. The forest was self-supporting for several years from the sale of Christmas trees.

Maumee State Forest is located 15 miles southwest of Toledo in northwestern Ohio with portions in Fulton, Lucas and Henry counties. The forest covers 3359 acres. Maumee State Forest is managed under the multiple-use concept including but not limited to, timber, wildlife habitat, forestry research, demonstration of good forest management, soil and water protection, recreational use and unique natural features.

During the spring and fall fire season, the forest crew encourages prevention and assists in the suppression of wildland fires. The spring is also the time of planting seedlings on private farmland through the Northwest Ohio Windbreak Program.

## II. Resource Management

*Silvicultural Practices (Scheduled Harvests, Cruising, Marking, TSI, Tree planting, Restoration projects etc.):*

*Following is a listing of compartments that will be inventoried or have resource management projects this year.*

<b>State Forest</b>	<b>Compartment</b>	<b>Total Acres</b>	<b>Work</b>
Maumee	B1	63	Scheduled Harvest. Pine plantation harvest. Harvest includes thinning and clearcutting and will open up the understory to foster native hardwood regeneration. (Carry-over notification. Harvest under contract yet to

			begin harvest operation. Likely take pace November 2021 to March 2022.)
Maumee	B2	60	<u>Pine Plantation Prescription Cruise</u> . Inventory all pine plantations in compartment. (Carry-over notification. Cruising not completed. Cruising planned for October 2021 to March 2022)
Maumee	C1	25	<u>Tree Planting, Maintenance and Restoration</u> . In spring 2019, high value hardwood tree seedlings (red oak, white oak, black oak, walnut, black cherry) were planted on field portions Carter Tract. Standard maintenance will be performed such as weed control, mowing and dead tree replacement.
Maumee	B2 A7	13.2 112.9	<u>Oak Openings Habitat Restoration, Tree Planting, Wetland Restoration</u> . In spring 2017/2018, high value hardwood tree seedlings (red oak, white oak, black oak, walnut, black cherry) were planted and wet areas restored to prairie on field portions Rusin and Hight Tracts. Standard maintenance will be performed such as weed control, mowing and dead tree replacement.
Maumee	C1	31	<u>H2Ohio Van Order Restoration</u> . Perform nutrient reduction and water quality restoration projects comprised of wetland restoration, tree planting and oak woods enhancement on the H2Ohio Van Order Tract acquired in July 2020. In spring 2021, high value hardwood tree seedlings (red oak, white oak, black oak, walnut, black cherry) were planted on high dry field areas. Former agricultural low/wet ground to be restored to wet prairie/wet sedge meadow. Existing woodland will have timber stand improvement practices applied to enhance existing oak trees while removing invasive plants/trees and undesirable tree species such as red maple. Standard maintenance will be performed such as weed control, mowing and dead tree replacement.

*Merchandising:*

Logs salvaged will be graded and offered for sale. Most salvaging is opportunistic and occurs after storms or during hazard tree removals. Any planned salvaging outside of right-of-ways or hazard tree removals will utilize the same environmental and cultural considerations as any other sales.

Personnel headquartered at Maumee assist the division in log merchandising operations throughout the state forest system.

*Minerals:*

There are no current mineral issues or extractions on Maumee State Forest.

*Invasives:*

Over the years, the Division has partnered with different agencies and groups to treat invasive plants on Maumee State Forest, particularly in the Henry County area known as the Muck Farm. The Division will continue to monitor and treat buckthorn and other invasive plants as necessary.

*Boundary: (Approximately 24 miles of boundary)*

There are approximately 24 miles of boundary line on Maumee State Forest. Approximately 20% of the known boundary will be repainted with yellow paint. Signage and boundary markers will also be checked and replaced as necessary.

*Licenses/Leases:*

At present, the Division of Forestry has working agreements or leases with the following agencies:

- Henry County Commissioners – 13 acres in Compartment C-4. Henry County Commissioners sublease the facility to Lutheran Home Service, Family and Youth Services Inc. (now known as Genecross). LHS operates the facility for the care and treatment of children with Asperger's Disorder. (This area was previously leased to the Ohio Department of Youth Services as the Maumee Youth Center)
- Henry County Commissioners – 15 acres in Compartment C3. Henry County Commissioners sublease the facility to Pathstone Corporation for a migrant rest center, transitional housing, emergency shelter, training, and education. (This area was previously leased to Ohio Bureau of Employment Services as a migrant rest center.)
- The division has a license agreement with the Nexus Gas Transmission, LLC, for a natural gas pipeline installed in 2018. The pipeline crosses the Hight tracts in Compartment A7/C2 and Green tract in Compartment A-2.

*Insects & Disease:*

Parts of Maumee State Forest may be surveyed for the presence of beech leaf disease (BLD) as part of a larger effort to estimate the extent of spread of the disease within the State.

Cooperate with the Ohio Department of Agriculture, OSU Extension, APHIS and USDA Forest Service with their monitoring and research efforts of the Emerald Ash Borer.

Monitor for Hemlock Woolly Adelgid, Gypsy Moth, and Asian Long-horned Beetle activity on the forest.

Cooperate with USDA Forest Service in their research effort to bring back and establish resistant ash and elm trees in Ohio and surrounding states.

Monitor for Thousand Cankers Disease on black walnut and Oak wilt on oak trees.

*Utilization & Marketing:*

Pine and hardwood trees that have been damaged, died or fallen and contain merchantable logs will be salvaged and be sold by bid or local manager's sale.

Firewood permits will be issued on a request basis for downed trees along roadways, firelanes and facilities.

*Certification:*

The Division of Forestry will continue third party dual certification under the Forest Stewardship Council © and the Sustainable Forestry Initiative standards. Surveillance audits will be conducted in October 2020.

*Research:*

Work with the US Forest Service with the elm tree research project. The planted elm trees are hoped to be resistant to Dutch Elm Disease. There are currently 15 trees planted in the research project that began in the summer of 2003.

Also, assist outside agencies to facilitate research projects on Maumee State Forest such as EAB forest ecology, floral/fauna studies, wet prairie studies, vernal pool studies, Fraxinus seed studies, American Chestnut blight resistance studies, Sirex wood wasp studies, salamander research, box turtle/blandings turtle/spotted turtle studies and Lepidoptera studies.

*Summary (2-3 year projects)*

The next 2-3 years will focus on tree planting, wetland restoration (new sites and re-treatments) and invasive control work on wetland areas. Prescribed fire may be used on several sites to help maintain restored areas.

Pine plantation thinning harvests will likely be planned based upon prescription cruising results over the next few years.

Due to the emerald ash borer, most ash trees greater than 2 -3 inches in diameter are now dead on Maumee State Forest. There are, however, numerous ash seedlings and small saplings. Dead ash trees (and hazard trees in general) in high use areas that pose a hazard will be felled.

Ongoing projects also include the continuation of partnership with groups such as APV riders, Ohio Horseman's Council Groups, watershed agencies, Toledo-Lucas County Metroparks, The Nature Conservancy, Oak Openings Regional partners, and local Scout groups.

### **III. Maintenance**

*Buildings:*

Perform general maintenance, routine cleaning and repair to buildings and structures located on the forest. Buildings/structures include:

1. Headquarter Building
2. Block Storage Building
3. Refrigeration Trailer
4. Storage Barn
5. APV Latrine
6. (4) Information Kiosks (Stewardship Trail, APV Area, Henry County Bridle Trail and Chestnut Education Plot in Tree Improvement Area)

Lock-Out-Tag-Out and Confined Space procedures will be followed in identified areas.

Confined Spaces at Maumee State Forest include the APV Latrine on Road 2 and the hydraulic lift vault in the HQ building.

Have fire extinguishers annually inspected.

A wood fired boiler furnace was installed fall 2016 at the Maumee State Forest HQ building. Boiler maintenance and firewood processing will be performed periodically.

Regular maintenance and mowing by forest crew will be performed at the Forest Headquarters, Windbreak Arboretum, Tree Improvement Area, APV Area, Franklin Cemetery in Swanton Township, Camp Trail/Tower Trail Bridle parking areas and the Stewardship Trail.

*Infrastructure (water, wastewater, utilities):*

Gas pipelines, transmission lines, and telephone rights-of-way are found throughout Maumee State Forest. Right-of-way activities are closely monitored to ensure that Best Management Practices are used to minimize erosion and work with the industry personnel to minimize the aesthetic impacts of their work.

*Vehicles/Equipment:*

Continue the preventive maintenance, timely service and repairs to the unit's fleet of vehicles and equipment. Vehicles and Equipment include:

- 2018 Dodge Crew Truck
- 2009 Dodge Crew Truck
- 2003 Ford Cargo Van
- 2002 Freightliner Transport Truck
- 1998 International Dump Truck
- 2000 Sterling Truck with log loader
- (1) Fire Engine/Pumper E63
- (3) tractors
- (1) bulldozer
- (2) equipment trailers
- (1) mini-excavator

Annual equipment requests will include the replacement of a tractor, cargo van and pickup truck.

*Roads:*

There are no paved or maintained forest roads within Maumee State Forest. A network of state, county and township roads offer good general access to Maumee State Forest. There are approximately 70 miles of fire lanes (limited access roads) within Maumee State Forest. These are inspected, cleared of downed trees and mowed at minimum every other year but more likely once during the operational year.

*Signage:*

Conduct annual inspection of forest signs, repairing, painting, and/or replacing, as necessary. Approximately 40 – 60 signs are installed/replaced/repared/repainted annually.

*Residences:*

There are no state-owned residences located on the forest. There are however, numerous rural residential and farmstead homes bordering the Maumee State Forest parcels.

*Dams:*

There are no dams located on the forest.

### *Capitals Projects:*

The development or major renovation of systems, buildings and facilities (recreation and administrative) is addressed through a capital improvement plan. These projects are distinct from the day-to-day operations of the Division and State Forests, which are funded through a biennium operating budget. Following are projects that may be considered under future capitals budgets at Maumee State Forest.

- State forest storage building replacement
- Hydraulic Lift Replacement
- Pavement Sealing Project – crack fill and seal pavement at Maumee HQ, Stewardship Trail and APV Parking Lot

### *Summary (2-3 year future projects):*

Maintenance on the forest, facility and equipment is an important part of everyday functions. Regular maintenance and repairs are needed to maintain equipment at Maumee SF. The forest crew performs the majority of the maintenance and repairs.

## **IV. Recreation**

### *Trails (bridle, hiking, etc.):*

*Bridle:* There are two bridle trail areas on Maumee: Lucas County has the Tower Bridle Trail (3 miles) and Henry County has the Camp Bridle Trail (5 miles). The bridle trails will be inspected at least twice each year. The trails will be mowed and downed trees cleared as needed. We will continue working with volunteers and OHC groups to maintain the bridle trails.

*Hiking:* There are over 70 miles of firelanes/hiking trails (limited access roads) on the forest. These will be inspected, mowed and cleared of down trees at least every other year. We will promote and maintain the Stewardship Trail kiosk and trail system.

*APV and Snowmobile:* Maumee State Forest contains the only public lands APV and Snowmobile trails in Northwest and Western Ohio. There are approximately 6.5 miles of APV and snowmobile trails. There are approximately 2 miles of single track motorcycle trails. The original trails were established in 1972. These trails will be inspected for downed trees quarterly or after major wind events. Grading and leveling of trails will be performed as needed or as ground conditions will allow. Trail markers will be reviewed and remarked as needed.

Future expenditures utilizing State Recreational Vehicle (SRV) Funds may include land acquisitions, equipment purchases, facility improvements and salary reimbursements for administrative and law enforcement time spent on APV Area. A utility trailer in June 2015 and a grading box scrape blade in April 2018 were most recent purchases utilizing SRV Funds.

In October 2016, the Division added ¾ mile of single-track trail in the APV area in partnership with the Toledo Trail riders. This is the only such designated trail on any state forest. This trail has been evaluated for safety and maintenance. There have not been safety issues, and the Toledo Trail Riders have performed periodic maintenance where needed.

In spring 2020, the Division of Forestry opened 1.25 miles of additional single-track trails on the west side of the APV Area. Planning was in conjunction with the Toledo Trail Riders. The Toledo Trail Riders are performing periodic maintenance where needed.

*Hunting:* All areas of Maumee State Forest are open to public hunting as outlined by ODNR Division of Wildlife rules and regulations.

*Miscellaneous Use:* Berries, nuts and mushrooms may be gathered and removed from Maumee State Forest as on all state forestland. Geocaching is permitted. A special use permit must be obtained to place geocaches on state forests.

Green Ribbon Initiative (GRI) partners will be collecting seed (sedges, grass, floral plants) in 2021-2022 on various locations of Maumee State Forest. This seed will be used primarily in restoration efforts on Maumee State Forest and other Oak Openings projects.

Recreational facilities, trailheads, picnic areas and other places where forest visitors congregate will be periodically inspected for hazard trees. Trees identified as possible hazards to users will be removed by the forest crew. Inspect all culvert crossings. There are 13 culvert crossings on the forest.

*Recreational Grants & Dedicated Funding:*

Grant funding through the Federal Highway Administration's Recreational Trails Program (RTP) is utilized to assist with projects and maintenance in the Maumee APV and Snowmobile Area. These funds are competitively awarded each year through a grant process administered by the ODNR Office of Real Estate and Land Management.

The State Recreational Vehicle Fund (SRVF) consists of revenues from the sale of APV and snowmobile registrations. These funds are dedicated for the purposes of enforcing and administering the laws relative to APV/Snowmobiles, for trail expansions, purchase of land to be used for APV/Snowmobile trails and for development and implementation of programs relating to APV/Snowmobile safety and use. Since dedicated funding is available, the division will aggressively pursue expansion opportunities for APV's, including new trails and land acquisitions.

**V. Wildland Fire**

*Forest Fire Protection Area Expansion:*

Changes in 2019, in the Ohio Revised Code have created the opportunity for the forest fire protection area to expand and include other areas. Response area responsibilities were also adjusted for efficiency. Under the new area, Maumee forest staff will assist departments in all of Lucas, Fulton and Henry counties in improving their wildfire prevention and response programs.

*Suppression:*

Aggressively suppress wildland fire starts within the forest.

When requested, support area fire departments in their suppression efforts with equipment, personnel and planning.

*Prevention:* Participate in 2 or more parades and/or fire prevention programs with Smokey Bear as requested and as time and budget allow.

Provide general fire prevention information and handouts to the local fire departments, educational institutions and the general public.

Provide use of Smokey Bear costume for those sponsoring genuine fire prevention events and activities.

*Prescribed Fire:*

The following sites will be considered for prescribed burning, as weather, workload, available workforce and budget allow:

1. Muck Farm and adjacent GLRI restoration areas (C3/C4)
2. Compartment C3 Oak Savanna restoration area (C3)
3. Rusin Tract Old Fields (A2)
4. Filzer Tract Old Fields (C3)
5. Road D Burn Sites (A2)

*Interagency Fire Crew:*

Maumee staff members will be allowed to participate in the Division's Interagency Fire Crew program as workload and budget allows.

*Training:*

Provide fire related training sessions for our Division personnel to ensure compliance with the division's Fire Manual.

Provide to fire departments in Maumee Fire Protection District basic wildfire training and information as requested.

*Fire Department Contacts:*

Update the Fire Department Information Sheets at least one time per year. Attend fire department or fire association meetings when possible.

Maintain Cooperative Agreements for Wildfire Suppression. Current agreements are with the following fire departments:

1. Delta Community
2. Liberty/Washington Township
3. Monclova Township
4. Providence Township
5. Springfield Township (in 2017 absorbed coverage area of Spencer VFD which disbanded)
6. Swanton
7. Whitehouse
8. Jerusalem Twp.
9. Damascus Twp - McClure
10. Archbold
11. Ridgeville Twp – Ridgeville Corners
12. Richfield Twp.
13. Pleasant Twp New Bavaria/Holgate

14. Wauseon
15. Napoleon
16. Monroe Twp - Malinta

Distribute new information on fire program or host meeting for all departments within the Fire Protection District. Need to continue to promote wildfire reporting.

Request investigations for wildland fires within fire district that are suspicious in nature or damaging to property or natural resources.

*Firewise:*

Continue to promote the Firewise program within the Maumee Fire Protection Area. Promote Community Wildfire Protection Plans (CWPP) to fire departments and communities as part of the emergency preparedness planning process. Utilize the division's Firewise Coordinator to assist.

*Federal Excess Personal Property (FEPP)/ Fire Fighter Property (FFP) programs:*

Continue to complete annual inspections of federal property within our fire protection project.

The following is a list of FEPP Equipment in The Maumee Fire District:

1. Mack R-9 Tanker – Providence Township
2. Mack R-9 Tanker – Providence Township
3. (2) Portable Pumps – Maumee State Forest
4. Hose Reel booster – Maumee State Forest
5. 83 Gallon Tank – Maumee State Forest

Continue to promote the participation of fire departments in the Federal Excess Personal Property (FEPP) and Fire Fighter Property (FFP) programs.

*Fire Grants:*

Promote grant opportunities to area fire departments. (VFA – Volunteer Fire Assistance Grants)

*Summary (2-3 year future projects):*

Wildfire suppression is a responsibility that has been traditionally associated directly with the Division of Forestry. Our staff and volunteer fire departments suppress fire on our state forestland. We support volunteer fire departments with technical assistance and heavy equipment on larger fires and multiple fire situations. In order to keep wildfire losses to a minimum, we maintain close contact with and provide training to fire departments in our area.

The Maumee Fire District encompasses all of Fulton, Lucas and Henry counties. Within this area are 27 fire departments. The fire departments are eligible for financial assistance for wildfire suppression through Cooperative Agreements.

## **VI. Law Enforcement**

Due to re-organization, the Division of Forestry's Law Enforcement staff was transferred to the Division of Parks in Fiscal Year 2013. These officers continue to enforce laws on State Forests, as well as continuing to investigate and enforce Ohio's wildfire laws.

## **VII. Employee Development**

### *Employee List/Vacancies/Table of Organization:*

John Mueller	District Forest Manager
Don Schmenk	Forest Manager
Troy Rachel	Equipment Operator
Steve Wells	Natural Resource Technician 1

### *Training:*

Provide or participate in Defensive Driving, CPR and First Aid training.

The Forest Manager and Equipment Operator will keep their pesticide Commercial Applicator License and CDL license updated through training and license renewal.

### *Safety:*

Hold safety meetings, at least monthly, for the employees.

Employees will be provided with one pair of safety toe work boots.

Conduct annual inspection of lock out/tag out tool boxes.

### *Other Employee Development:*

Employees will be allowed to participate in professional development and educational training programs as workloads and the budget allows.

## **VIII. Public Information/Outreach**

### *Planned Events:*

(Planned events are subject to change or cancel.)

APV Area Charity Event by Toledo Trail Riders (TTR)	October 2021
APV Area Cleanup – Maintenance Day with TTR	Spring/Summer/Fall 2022
Host OFA Chainsaw Training Level 1 or 2	Fall 2021 and Spring 2022
VFD Training 6 Hour Basic	Fall 2021 and Winter/Spring 2022
Windbreak Program Meeting with SWCD's	August/September 2022
Smokey Bear in Fire District Parades	July 2022
Smokey Bear in Fire District Parades	August 2022
Open House for Maumee State Forest	August/September 2022

### *Windbreak Arboretum and Tree Improvement Area*

Nearly 5 acres are set aside for demonstration and research plantings. The windbreak arboretum was established in 1990 on approximately 2.5 acres to demonstrate various tree and shrub species commonly used for windbreak plantings in Northwest Ohio. This area is used to demonstrate the benefits of windbreaks to private landowners.

The 2.5 acre Tree Improvement Area is primarily designed for research plantings of various species. Currently the U.S. Forest Service has this experimental planting in place:

- In 2004, American elm trees having known resistance to Dutch elm disease (DED) were planted by the USFS Delaware Laboratory.

In the Spring of 2013, an American chestnut education/demonstration plot was established by volunteers in the Tree Improvement Area. The plot exhibits the American chestnut, American hybrid chestnut, Chinese chestnut, Japanese chestnut and the Allegheny chinquapin chestnut. The establishment of this plot was made possible by the efforts of local Tree Farmer Walt Lange, Eagle Scout Ben Cook, Empire Chestnut Company and the Ohio Chapter of the American Chestnut Foundation.

#### *Partnerships:*

Partnerships with recreational users are important to getting many projects accomplished on Maumee State Forest, including: construction of informational kiosks, roadside trash pick-ups, trail clean-ups, and construction of horse mounting stations.

The following is a partial list of agencies/constituents/partners of Maumee State Forest:

Toledo Trail Riders  
Ohio Horseman's Council, Henry and Fulton Co. chapters  
USDA Forest Service  
USDA APHIS  
Swan Creek Watershed Committee  
Green Ribbon Initiative  
Bowling Green State University  
Michigan State University  
Toledo Metro Parks  
Ohio State University  
Ohio State University Extension Service  
ODNR Division of Natural Areas and Preserves  
ODNR Division of Wildlife  
ODNR Division of Parks and Watercraft  
ODNR H2 Ohio Program  
Boy Scouts of America  
State Highway Patrol Post 48  
County Sheriff in Fulton, Henry and Lucas Counties  
9 Cooperating Fire Departments in Fulton, Henry and Lucas Counties  
17 Soil and Water Conservation Districts in northwest Ohio  
Ohio Department of Agriculture  
Oak Openings Region Conservation Planning Partners  
The Nature Conservancy at Kitty Todd

Ohio EPA NW District Office  
Swan Creek, Swanton, Providence and Washington Township Trustees  
Fulton, Henry and Lucas County Commissioners  
Pathstone Inc.  
Genecross LHS - Lutheran Social Services  
Toledo Naturalist Association  
Ohio Lepidopterists  
National Wild Turkey Federation  
Northwest Ohio Rail-to-Trails Association (NORTA)

*Volunteer Groups:*

Individual or group volunteering is handled on a case by case basis. A volunteer agreement form must be completed for volunteer projects. A Volunteer Agreement is currently maintained with the following groups:

1. Toledo Trail Riders (APV Area)
2. Northwest Ohio Rails to Trails Association (North County Trail)
3. Fulton County OHC (Bridle Tails)

The Fulton County Court often assists by assigning community service workers to trash pickup projects in Maumee State Forest.

*Interpretive Programs:*

The Stewardship Trail offers a self-guided tour of forest management practices on the forest. The trail consists of 18 different stops. Visitors can choose from a one mile or two-mile hiking loop through the forest and will encounter a range of management treatments including pine thinning, pine clearcuts, prescribed burns, wildlife management areas, invasive species, insect/disease trees, riparian corridor and emerald ash borer ash salvage logging areas.

Educational programs dealing with forestry related topics, such as forest management, tree planting, and fire prevention are given to students and interested groups on a request basis. Various schools and groups visit the forest to learn about forestry and the forest environment.

*Summary (2-3 year future projects):*

Information and Education about forest resources in Ohio is an ongoing component of the Division of Forestry. Open House events or Annual Work plan review and comment events will be held annually.

**IX. Budget**

*Operational Budget*

The 2022 operational budget allocated to state forest units covers the general expenses necessary to the operation of the particular state forest. State Forest Managers and staff purchase supplies, services and equipment to keep the forest unit running, and report all expenditures.

*Revenue:*

The majority of Division of Forestry revenue is generated from timber sales and the merchandising program. Revenue is also generated by firewood permits, special use permit applications, product sales, and the Northwest Ohio Windbreak Program. A percentage of the timber sale income is returned to the local township, county, and local school districts through the "Trees to Textbooks" Program. A portion of the revenue is retained by the Division of

Forestry to pay local fire departments for wildland fire reports submitted to the Division.

## **X. Other Programs**

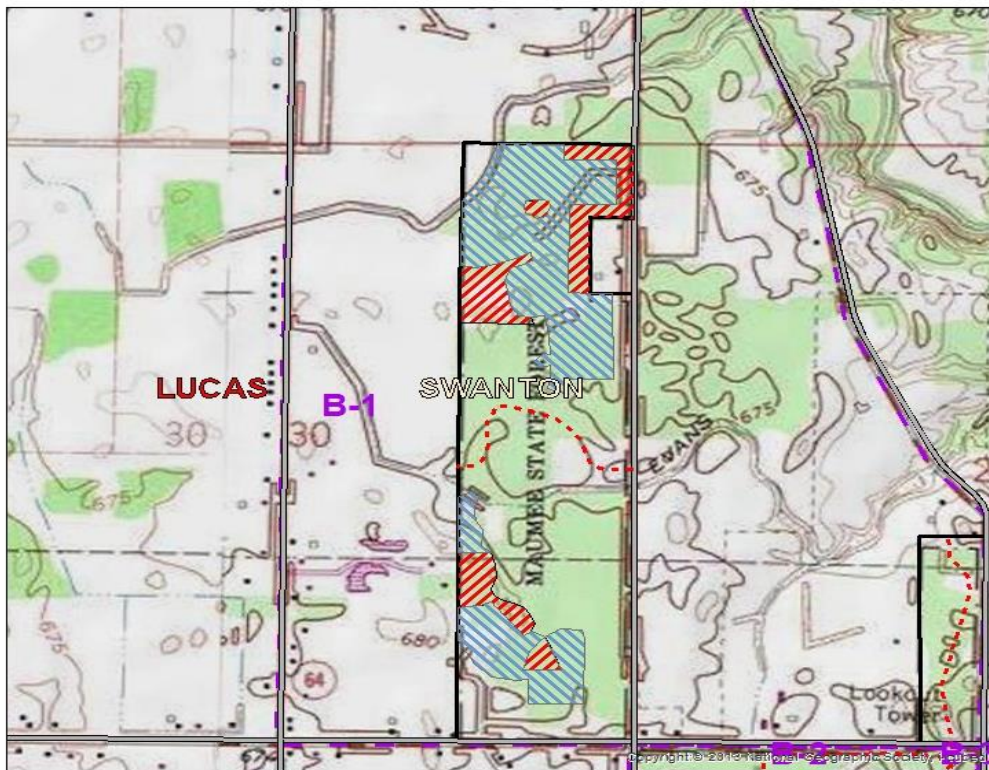
### *Northwest Ohio Windbreak Program*

The Northwest Ohio Field Windbreak Program is an interagency effort to plant field windbreaks in 17 counties in northwest Ohio. The Maumee State Forest crew plays an important part and spends considerable time with the program. Primary roles and goals include:

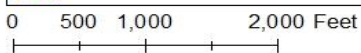
- Plant field windbreaks in 17 participating counties each year.
- Apply spring and fall herbicide treatments to control competitive herbaceous vegetation.
- Work with landowners who seek technical advice.
- Provide cold storage of seedlings for the windbreak program.
- Maintain Windbreak Arboretum. Provide current information and demonstrations on windbreak tree and shrub species.

# Scheduled Harvest Under Contract. Planned for November 2021 to March 2022. Marking Plan approved in previous Work Plan.

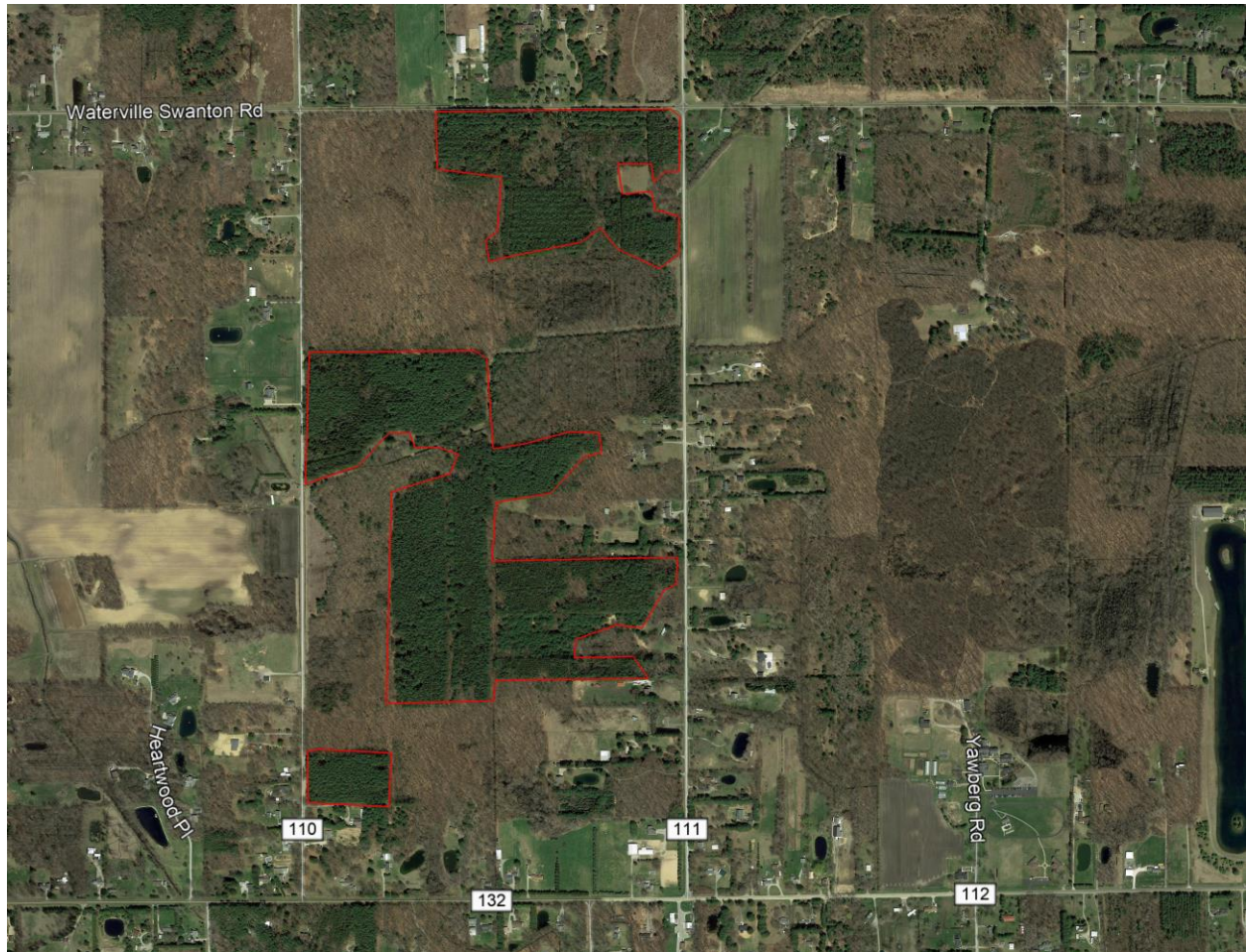
ODNR - Division of Forestry  
 2020-2021 Marking Plan  
 Maumee State Forest  
 DRAFT



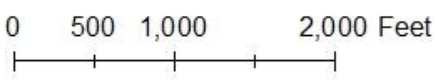
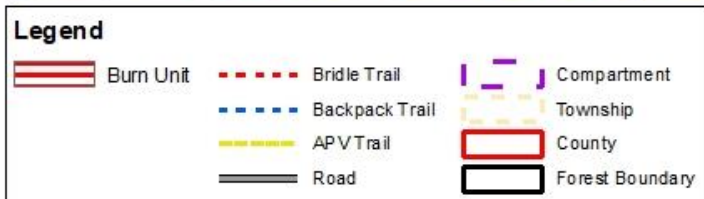
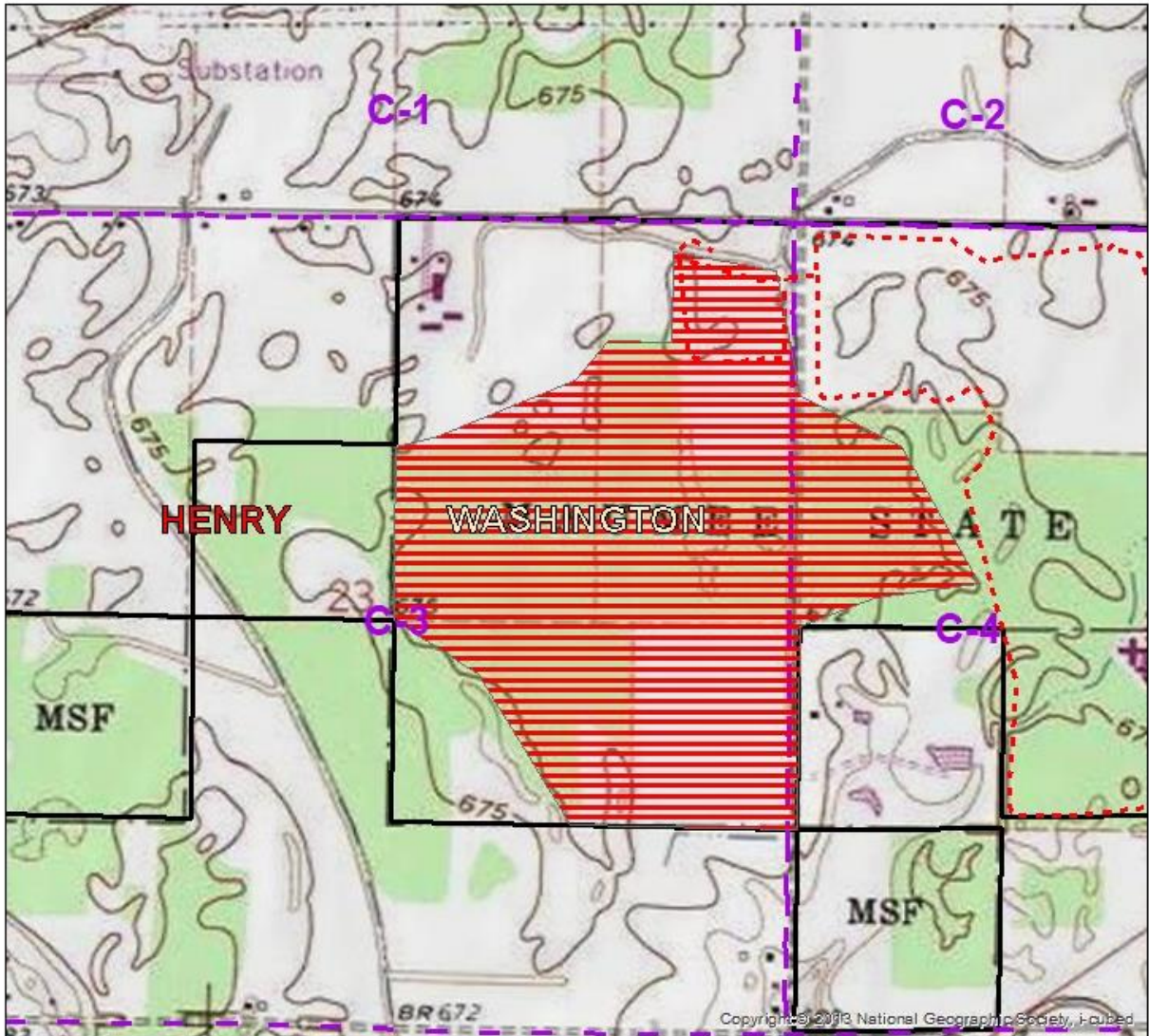
Legend			
<b>Treatment</b>	Group Openings	Bridle Trail	Compartment
Thinning	Shelterwood Removal	Back pack Trail	Township
Selection	Deferment	APV Trail	County
Selection w/ Groups	Clearcut	Roads	Forest Boundary
Shelterwood			



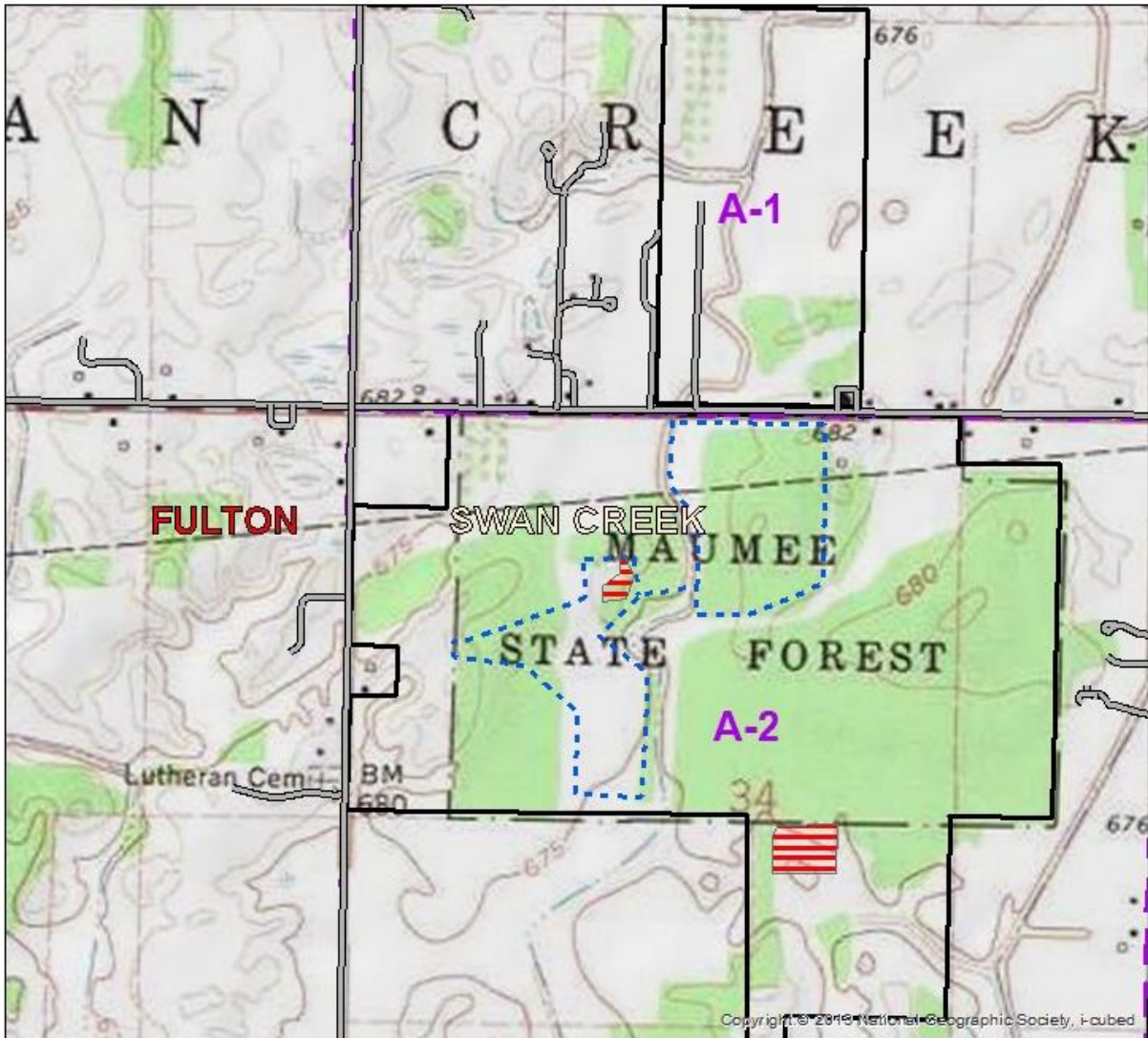
# Compartment B2 Pine Plantation Prescription Cruising – 60 Acres



ODNR - Division of Forestry  
 Savanna & Muck Farm Restoration Planned Rx Fire  
 Maumee State Forest  
 DRAFT

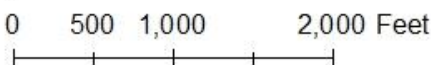


ODNR - Division of Forestry  
 Road D Planned Rx Fire  
 Maumee State Forest  
 DRAFT

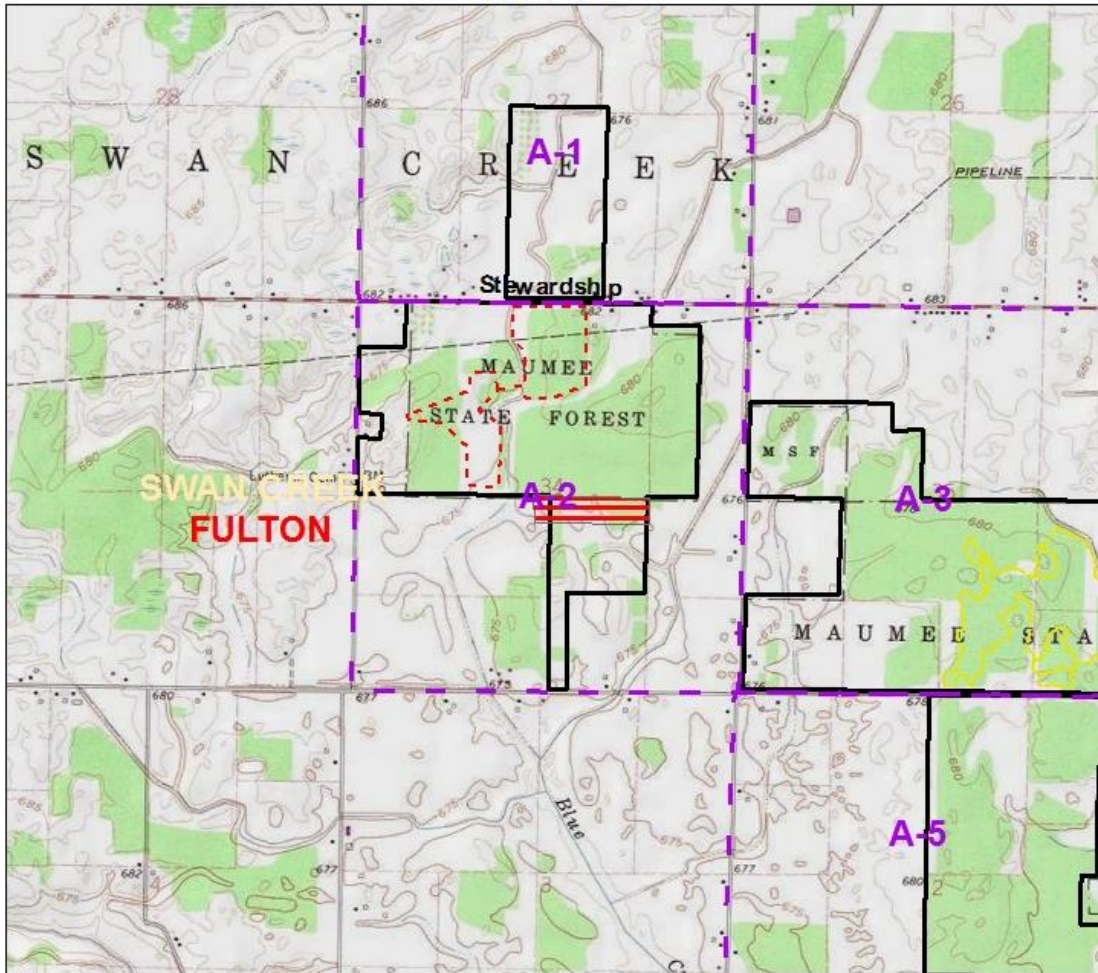


**Legend**

 Burn_Units	 Bridle Trail	 Compartment
 Backpack Trail	 APV Trail	 Township
 Roads	 County	 Forest Boundary



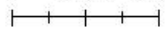
ODNR - Division of Forestry  
 2017-2018 Rx Fire Plan  
 Maumee State Forest  
 Rusin Old Fields and Oak Woods  
 DRAFT



Legend			
	Burn Unit		Compartment
	Bridle Trail		Township
	Back pack Trail		County
	Hiking Trail		Forest Boundary
	APV Trail		

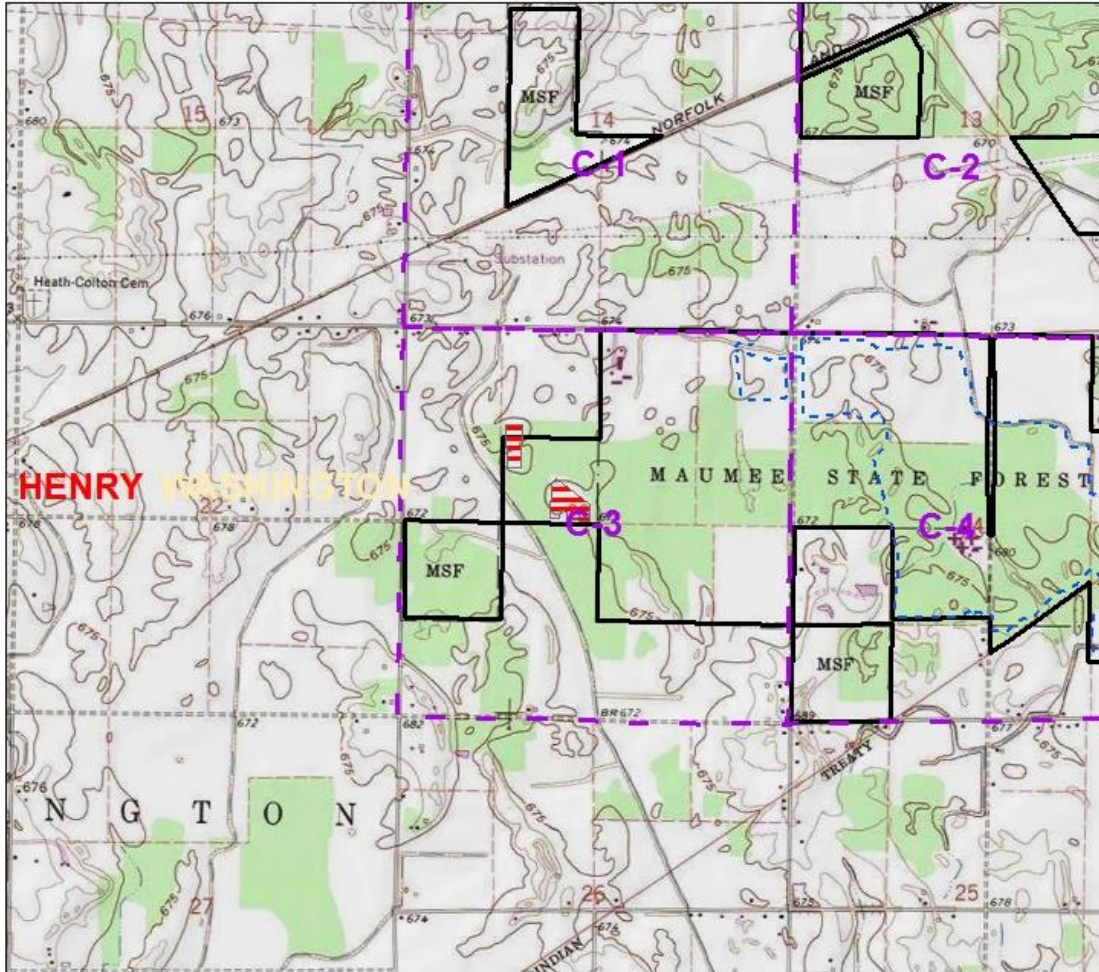


0 1,000 2,000 Feet



1 inch = 2,000 feet

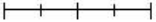
ODNR - Division of Forestry  
 2017-2018 Rx Fire Plan  
 Maumee State Forest  
 Filzer Burn  
 DRAFT



**Legend**

 Burn Unit	 Bridle Trail	 Compartment
 Back pack Trail	 Township	 County
 Hiking Trail	 Forest Boundary	
 APV Trail		



0 1,000 2,000 Feet  


1 inch = 2,000 feet