

STATE OF OHIO
DEPARTMENT OF NATURAL RESOURCES
DIVISION OF GEOLOGICAL SURVEY
Horace R. Collins, Chief

Information Circular No. 44

COAL PRODUCTION IN OHIO—1800-1974

compiled by

Horace R. Collins

Columbus
1976



SCIENTIFIC AND TECHNICAL STAFF
OF THE
DIVISION OF GEOLOGICAL SURVEY

ADMINISTRATION

Horace R. Collins, MS, *State Geologist and Division Chief*
Richard A. Struble, PhD, *Geologist and Assistant Chief*

William J. Buschman, Jr., BS, *Administrative Geologist*
Barbara J. Adams, *Office Manager*

REGIONAL GEOLOGY

Ronald D. Stieglitz, PhD, *Geologist and Section Head*
Richard W. Carlton, PhD, *Geologist*
Michael L. Couchot, MS, *Geologist*
Richard M. DeLong, MS, *Geologist*
Michael C. Hansen, MS, *Geologist*
Michele L. Risser, BS, *Geologist*
David A. Stith, MS, *Geologist*
Robert G. Van Horn, MS, *Geologist*
Joel D. Vormelker, MS, *Geologist*

LAKE ERIE

Charles H. Carter, PhD, *Geologist and Section Head*
D. Joe Benson, PhD, *Geologist*
Donald E. Guy, Jr., BA, *Geologist*
Dale L. Liebenthal, *Boat Captain*
Thomas J. Feldkamp, BS, *Geology Technician*

TECHNICAL PUBLICATIONS

Jean Simmons Brown, MS, *Geologist and Editor, Supervisor*
Philip J. Celnar, BFA, *Cartographer Supervisor*
James A. Brown, *Cartographer*
Donald R. Camburn, *Cartographer*
James E. Hairston, *Cartographer*
Jean M. Leshner, *Photocopy Composer*

GEOCHEMISTRY LABORATORY

George Botoman, MS, *Geologist*
Norman F. Knapp, PhD, *Chemist*

SUBSURFACE GEOLOGY

Adriaan Janssens, PhD, *Geologist and Section Head*
Jeffrey B. Hermann, BS, *Geologist*
Frank L. Majchszak, MS, *Geologist*
Craig B. Moore, BS, *Geology Technician*
James Wooten, *Geology Technician*
Linda C. Gearheart, *Clerk*

PUBLIC SERVICE

Jean Simmons Brown, MS, *Geologist and Editor, Supervisor*
Madge R. Fitak, BS, *Geologist*
Pauline Smyth, MS, *Geologist*
Donna M. Swartz, *Technical Typist*

TECHNICAL EDITING

Jean Simmons Brown, MS, *Geologist and Editor, Supervisor*
Susan L. Duffield, BS, *Geologist and Assistant Editor*
Merrienne Hackathorn, MS, *Geologist and Assistant Editor*

STATE OF OHIO
DEPARTMENT OF NATURAL RESOURCES
DIVISION OF GEOLOGICAL SURVEY
Horace R. Collins, Chief

Information Circular No. 44

COAL PRODUCTION IN OHIO—1800-1974

compiled by

Horace R. Collins

Columbus
1976



Photocopy Composer: Donna M. Swartz
Cartographer: James A. Brown

CONTENTS

	Page
Abstract	1
Introduction	1
Coal measures of Ohio	1
Resources versus reserves	1
Chemical characteristics	3
Mining and production	5
Importance of coal to Ohio	5
Production patterns	6
Production by county—1800-1974	7
References cited	8
Athens County	9
Belmont County	9
Carroll County	10
Columbiana County	11
Coshocton County	12
Gallia County	13
Guernsey County	14
Harrison County	14
Hocking County	15
Holmes County	16
Jackson County	17
Jefferson County	18
Lawrence County	19
Mahoning County	19
Medina County	20
Meigs County	21
Monroe County	22
Morgan County	23
Muskingum County	23
Noble County	24
Perry County	25
Portage County	26
Scioto County	27
Stark County	27
Summit County	28
Trumbull County	29
Tuscarawas County	30
Vinton County	31
Washington County	32
Wayne County	32

FIGURES

1. Bedrock geology of Ohio	2
2. Coal production in Ohio from underground and surface mines, 1914-1974	4
3. Coal production in Ohio, 1800-1974	4
4. Coal production and number of operating mines, 1950-1974	5
5. Coal consumption in the United States, 1974	6
6. Value of mineral commodities produced in Ohio, 1954-1974	6
7. Cumulative coal production, 1800-1974, by county	7

COAL PRODUCTION IN OHIO—1800-1974

compiled by
Horace R. Collins

ABSTRACT

Coal is Ohio's most important mineral resource, and during the past 175 years over 2.7 billion tons of coal have been mined. This production has come from an approximate 30-county area of eastern Ohio, where both surface and underground mining methods have been employed.

INTRODUCTION

Coal is Ohio's most valuable mineral resource and has been mined in Ohio since before the days of statehood. Both presently and historically coal has contributed substantially to Ohio's energy needs. It is not possible to pinpoint the exact date coal started to be used in the state. The earliest known reference to coal in Ohio is a map published by Lewis Evans in 1755. This map, entitled "A general map of the middle British colonies, in America," shows the word "coals" in the approximate area of what is now southern Stark and northern Tuscarawas Counties. The word "coals" is shown also along the Hockhocking (Hocking) River in the general vicinity of Athens County. It is known, however, that early settlers in the eastern portion of the state used coal that they found cropping out near their homes or settlements. It was not until 1800 that the first mined coal tonnage was reported (Eavenson, cited in Klein, 1956). In that year production of 100 tons was recorded for Jefferson County. Three years later, when Ohio became a state, reported annual production was 200 tons from two counties. There was undoubtedly some unreported production: many farms in the coal-bearing region had small mines, commonly referred to as "dog holes," from which winter supply of coal was obtained. Total tonnage from these individual farm mines was probably quite small relative to statewide figures. Commercial coal production was to grow from this small early start to an all-time peak of 55,136,699 tons in 1970 (Ohio Division of Mines, 1971). Cumulative production for the 175-year period from 1800 through 1974 totals 2,702,720,907 tons.

Coal measures of Ohio

The coal resources of Ohio are confined to the approximate 30-county area underlain largely by rocks of the Pennsylvanian and Permian Systems (fig. 1). Rocks assignable to these two geologic systems cover an area of approximately 12,340 square miles and constitute the coal measures of Ohio. Almost all the significant coal resources

of Ohio are found in the Pennsylvanian System; only a very minor resource potential can be assigned to Permian coal.

About 60 coals in the coal measures of Ohio have received formal geologic names. Most of these seams are very thin and have no economic importance; they are of interest only to professional geologists who must concern themselves with the geological details of the state's rock systems. Only about half of these coals are of sufficient thickness to have been mined or to have mining potential, and only about 14 of these mineable seams have been or can be considered to be important. For the past few years the most important coals in terms of mined tonnage have been, in decreasing order, Pittsburgh (No. 8), Meigs Creek (No. 9), Middle Kittanning (No. 6), Lower Freeport (No. 6A), and Waynesburg (No. 11). The numbers assigned to these coals and some others are a carry-over from the very early days of Ohio geology, when commercially mineable coals were assigned numbers, with No. 1 being the lowest coal. This system was abandoned in later years after some 15 coals had received formal number designation. The existing numbers have held on, however, through the years and are commonly used in the coal fields. These numbers apply to Ohio coal seams only and do not relate to numbers assigned to coals in any other state.

With the exception of the Pittsburgh (No. 8) coal, from which production has been high from the earliest days, production levels from individual coal seams rise and fall. Such fluctuations are related to depletion of reserves in some seams, changes in technology which allow the use of previously little-mined coals, changes in mining methods, making certain coals economically mineable, and economic cycles that favor some mining methods or sites over others, to list a few of the more obvious factors.

Resources versus reserves

Many people, including geologists and other mineral resource specialists, have in the past used the terms "resource" and "reserve" somewhat loosely. There are differences in the meanings of these two terms, and it is

important that a distinction be made between coal reserves and coal resources.

Coal resources include coals that are presently mineable plus those which may become mineable or from which energy may be produced sometime in the future. Resources include deposits that are too thin to mine under present economic and technologic conditions, are of low quality, or are inaccessible. Future technology or economic conditions may make these deposits commercially producible. Re-

sources also include speculative deposits which geologic evidence suggests may be present but for which no proof exists and which may in fact not be present. Coal reserves, on the other hand, are deposits that have definitely been identified and are producible under present economic and technologic conditions. It is obvious then that an area may have a large coal resource but a small reserve.

The most recent estimate of Ohio's original coal resources (coal in the ground before the advent of mining)

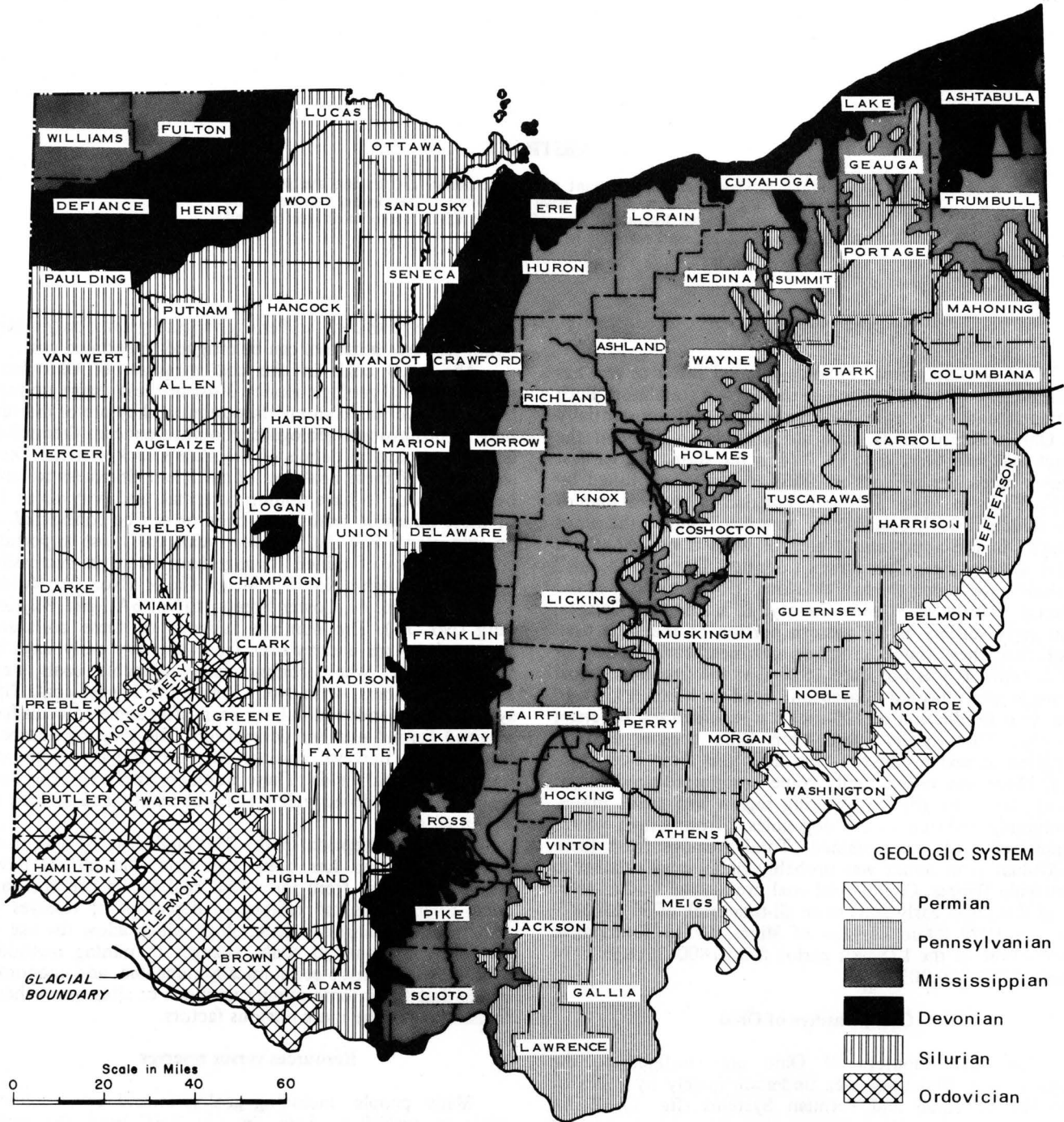


FIGURE 1.—Bedrock geology of Ohio.

places the figure at 46,488,251,000 tons (Brant and DeLong, 1960). This figure, it must be emphasized, is a resource tabulation, which takes into account coals as thin as 14 inches and which is compiled from estimates of widely different reliability. For realistic present reserve data, this figure needs to be adjusted for coal that has been mined and for coal lost to mining. Although the actual percentage may differ from mine to mine, it is widely assumed that only 50 percent of the coal will be recovered in underground mining. The remaining 50 percent is in pillars left to support the mine roof or to protect oil and gas wells, or because of other reservations such as dams. For safety reasons it is generally not possible to recover this coal; the coal is therefore no longer part of a reserve base, although it must still be considered a resource. Strip mining recovers a much higher percentage of coal, but even this method may have a loss of 10 to 20 percent in a given mining area (Averitt, 1975, p. 31). Auger mining, a method used in some locations after an area has been strip mined, averages only about 50 percent recovery (Averitt, 1975, p. 31). Other factors which serve to reduce the mineability of a coal resource include, but are not limited to, cities or towns, reservoirs, lakes, power lines, and highways; mining under such sites could result in subsidence and damage or destruction of surface installations. Because of these and other mining problems it is generally assumed that only 50 percent of a given coal resource will ultimately be available for mining.

On the basis of the latest resource tabulation of 46,488,251,000 tons (Brant and DeLong, 1960) less 5,395,442,000 tons mined and lost to mining (table 1) less 50 percent postulated for unavailability, 20,546,404,500 tons are left as Ohio's resource base. However, as indicated earlier, the resource base is different than the reserve base and does not define the amount of coal which will be available for production. Further, there is no way, on the basis of existing information, to accurately predict Ohio's ultimate reserve base. For instance, almost 37 percent of Brant and DeLong's estimate of original resources is in either the inferred-reliability category or in the 28-inch-and-less thickness category. The existence of coals in the inferred-reliability category and to some lesser extent in the probable category will not be known until additional exploratory drilling is done in the areas in which the coals have been inferred. It is extremely difficult to speculate on the amount of coal that will finally prove to be available in such areas. When the future of coal as a source of Ohio's energy is being considered, it is important to remember that the presence of such coal is speculative.

Thinner coals must similarly be regarded with caution. Coal in the 14- to 28-inch thickness category is considered thin and for the most part has minimal commercial importance. There is some small-scale stripping of coals in this thickness category in Ohio, but there is generally some mitigating factor such as closeness to market, recovery incidental to other mining, or low sulfur content. Thin coals are tabulated for resource inventories, however, because of the possibility of future technology making the development of these coals feasible.

Coal which may be present in unmapped or unexplored portions of known coal-bearing areas is considered a hypothetical resource. A substantial portion of the deeper parts of Ohio's coal basin is relatively unexplored. Coal has been so readily available on or not far down dip from the outcrop that there has been little incentive to explore the

deeper parts of the basin where both exploration and development costs will be much higher. In Ohio 400 to 500 feet below valley level is about the depth limit to which coal has been developed; few mines have operated even at this depth. Thick coals at depths of 600 to 800 feet, however, would seem to have good development potential as the state and the nation move toward greater energy independence.

Struble, Collins, and Kohout (1971) investigated in an eight-county area the low-sulfur deep-coal potential of the essentially unexplored deepest portion of the Ohio coal basin. Although no new low-sulfur coal resources were found, it was possible to postulate the presence of substantial and previously unreported coal resources in the normal Ohio sulfur range (3 to 5 percent). Because of the wide spacing of data points, coal found in this study would fall in the hypothetical-resource classification. On the basis of current information Ohio Division of Geological Survey geologists have placed these hypothetical resources at 6,152,000,000 tons (Averitt, 1975, p. 15). Obviously much more exploration will have to be carried out to verify the extent and quality of these resources.

Chemical characteristics

Coal is classified in several ways depending upon purpose of the classification and needs of the coal users. The classification of the American Society for Testing and Materials (ASTM) is a very widely used system for American coals. This classification is based on the degree of alteration the coal materials have undergone in changing from peat to anthracite. Under this system there are four major classes: (1) lignite, (2) subbituminous, (3) bituminous, and (4) anthracite.

Ohio's coals all fall into the high-volatile bituminous rank. On the basis of 512 analyses selected for their completeness, Brant and DeLong (1960, p. 17) report that Ohio's coals on an "as received" basis range from about 5 to 20 percent ash, from 1 to 6 percent sulfur, and from 10,000 to 13,000 Btu.

Because of increasing interest in air-quality standards, permissible sulfur levels have been lowered by regulatory agencies, and this is a critical factor in the potential for Ohio coals. Most of Ohio's coal falls into the medium- to high-sulfur range. Sulfur content in the range of 1.1 to 3.0 percent is considered to be in the medium range; over 3.0 percent falls into the high range (Averitt, 1975, p. 81). Low-sulfur coals were formerly mined in Ohio, but most of the known reserves of these coals have been depleted.

Sulfur occurs in coal in three different forms: pyritic sulfur, organic sulfur, and sulfate sulfur. Pyritic sulfur is related mainly to the mineral pyrite (iron sulfide, FeS_2) and occurs as particles ranging from a few microns to bands or nodules several inches across. Organic sulfur occurs in organic compounds present in the coal, and sulfate sulfur is present, generally in minor amounts, in minerals such as gypsum (calcium sulfate, $\text{CaSO}_4 \cdot 2\text{H}_2\text{O}$). Pyritic sulfur generally makes up the largest percentage of total sulfur, and sulfate sulfur normally accounts for the least amount. The pyritic and sulfate sulfur levels can generally be reduced somewhat by cleaning the coal; the amount of such reduction is to a considerable degree tied to the particle size of the material to be removed, with finer particles becoming increasingly difficult to remove. There are other processes which can remove sulfur but which are at the present time

COAL PRODUCTION IN OHIO

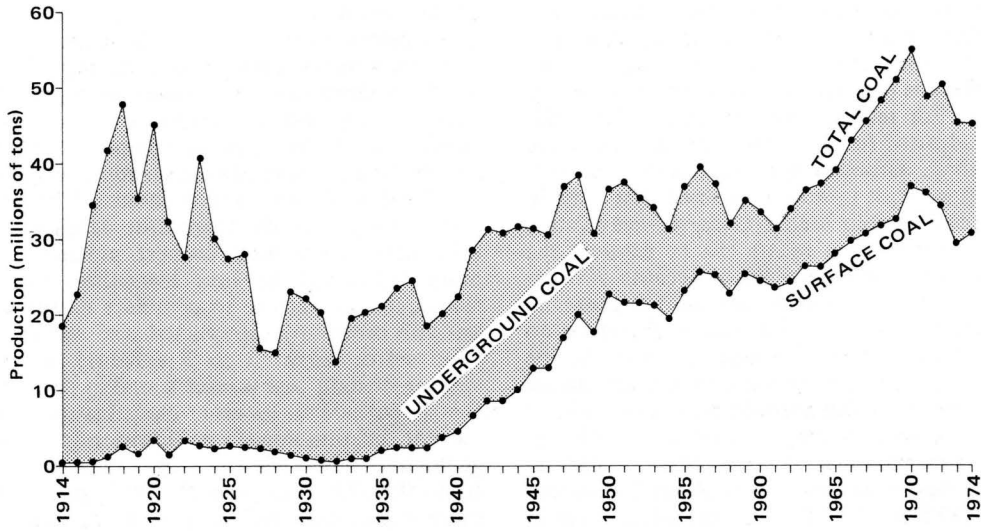


FIGURE 2.—Coal production in Ohio from underground and surface mines, 1914-1974 (Ohio Division of Mines, annual reports).

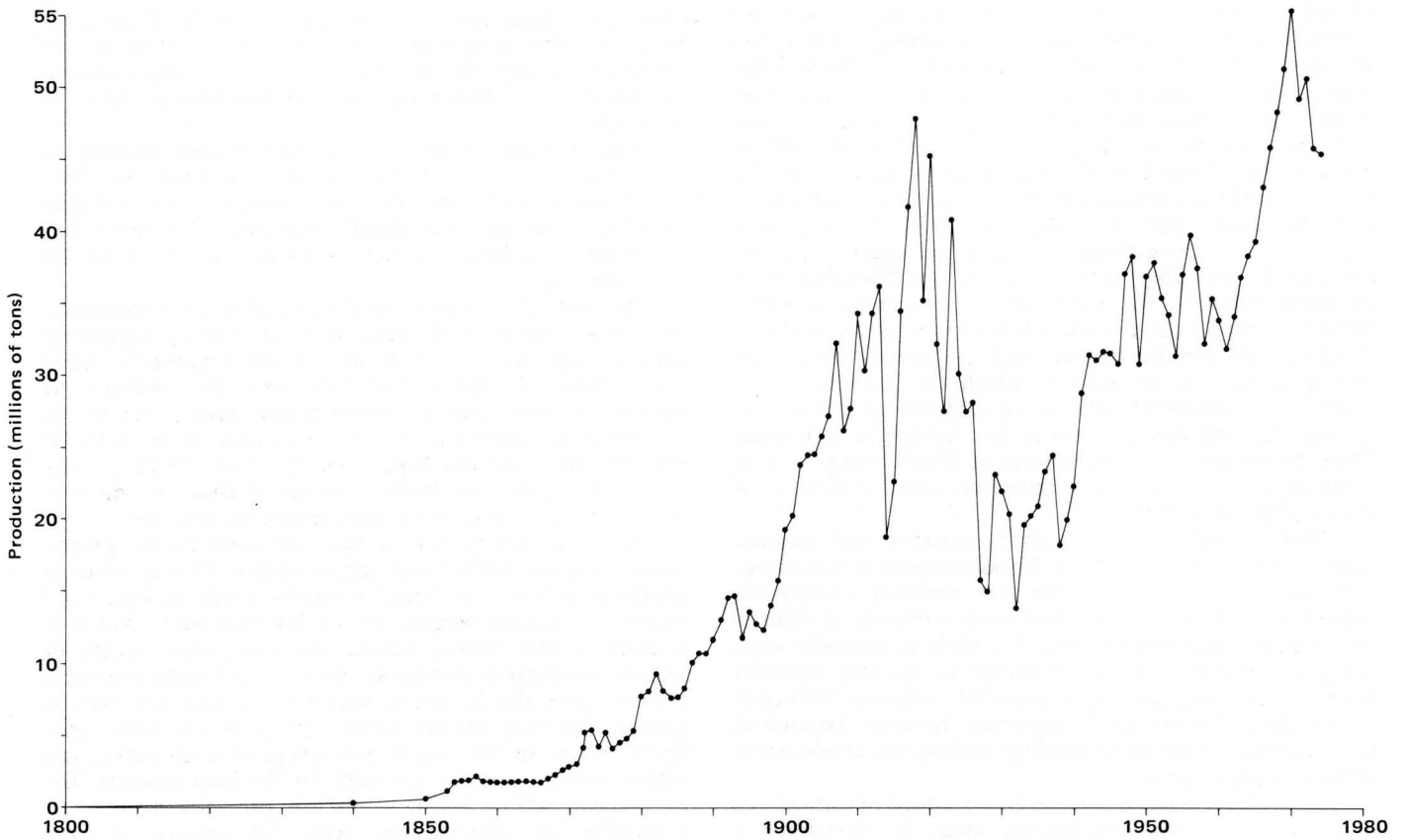


FIGURE 3.—Coal production in Ohio, 1800-1974 (generalized 1800-1852, when production was below 1 million tons; Ohio Division of Mines, annual reports).

beyond the range of economic or technologic feasibility. Certain coal gasification/liquefaction methods hold promise of removal of sulfur as an integral part of the process. These methods are, however, not yet developed to the production stage.

Mining and production

Coal is mined in Ohio by both strip and underground methods as well as by auger, which is, as used in this state, a combination of strip and underground methods.

Underground mining was the principal method until about World War II, when strip mining began to increase at a very rapid rate (fig. 2). Strip mining, however, got a rather early start in Ohio in 1914 (fig. 2), and in some counties, notably Jefferson, considerable coal was being produced by stripping as early as World War I.

The state hit an important annual production high of 47,919,202 tons (fig. 3) in the last year of World War I. This high was to stand until 1970, when the all-time production record of 55,136,699 tons was set. Once strip mining began in earnest it grew to become the dominant method of mining in Ohio, and in 1974 slightly over 68 percent of the state's total production came from strip mines. This percentage is down, however, from the past decade when strip mining rose to account for over 70 percent of total production (fig. 2).

It is not known to the writer when auger mining first started in Ohio. However, there is no tonnage attributed to this method prior to 1954, and, on the basis of discussions with officers of the Ohio Division of Reclamation, it seems that in all probability there was no auger mining until late 1953 or early 1954. It should be noted that in the cumulative production statistics for 1954 and 1955 tonnages from auger mining are included in total tonnage, not in strip tonnage. Beginning with 1956 and continuing to the present, auger mining is reported with strip tonnage.

The total number of mines in Ohio has decreased drastically in the last 25 years, with no adverse effect on production (fig. 4). Production has in fact greatly increased during the last 10 years relative to the number of operating mines. In 1974, the last year for which statistics were available for this report, there were 252 surface mines, which collectively produced 30,936,138 tons of coal, and 28 underground mines, which added another 14,415,464 tons. These tonnage figures represent 68 and 32 percent, respectively, of the state's total 1974 output. Of the total surface-mined coal, slightly over 2 percent was mined by auger.

The drastic reduction in the total number of mines reflects the closing of many very small mines which could not remain competitive in an increasingly difficult technological, regulatory, and business environment. Technological advances in equipment, on the other hand, have played a major role in increasing total production capacity. Production in Ohio has fallen from its peak year of 1970 (fig. 3); however, this decline is related to business and regulatory aspects of the coal industry rather than to mining technology.

Importance of coal to Ohio

Coal is vital to Ohio, and Ohio is the leading coal-

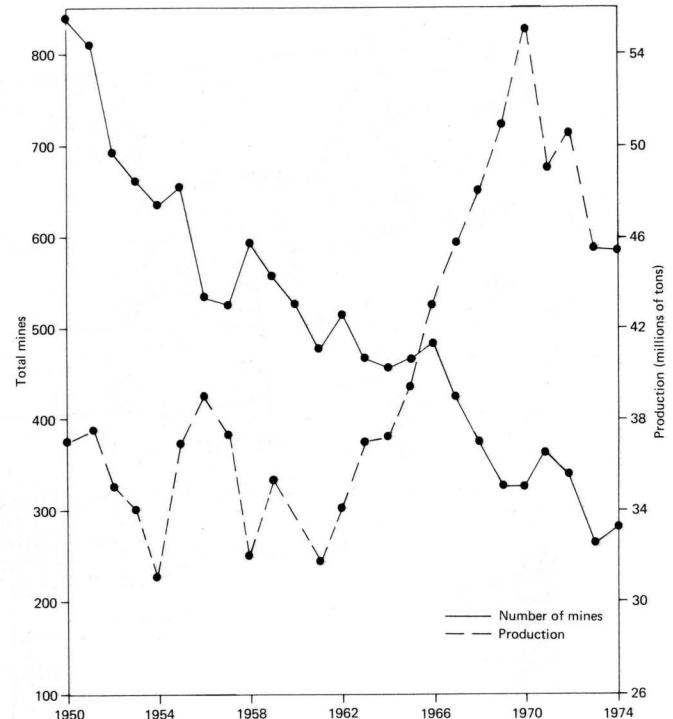


FIGURE 4.—Coal production and number of operating mines, 1950-1974 (Ohio Division of Mines, annual reports).

consuming state in the nation, accounting for between 11 and 12 percent of the nation's total consumption (Ohio Energy Emergency Commission, 1975). Coal consumption by Ohio in 1974 was 69.6 million tons (fig. 5). Ohio's 1974 production was 45.4 million tons, so it can be seen that 24.2 million tons of coal had to be imported during 1974 to meet the needs of Ohioans.

Electric utilities consumed 63 percent, coke plants 19 percent, industrial users 16 percent, and residential and commercial users 2 percent of the total coal used in Ohio in 1974. One hundred percent of the coal consumed by the metallurgical coke industry in Ohio is imported from other states; this use alone accounts for over half the imported tonnage. Most native Ohio coals are too high in sulfur for use by the metallurgical industry. All other imports of coal essentially balance exports.

Coal is the single most important mineral commodity produced in Ohio (fig. 6). The approximate value at the mine of coal produced in 1974 was \$496,830,233 (Ohio Division of Mines, 1976, p. 11). The actual value of a raw material to the economy, however, far exceeds the value at the mine. It is in fact rather difficult to trace all the ramifications to the economy of a raw mineral resource. Suppliers of equipment, materials, and services to the mine, the transportation industry, the electric utility industry, the steel and ferroalloy industries, and the manufacturers of consumer products all depend to a greater or lesser degree on a continuing supply of coal or electricity generated from coal for their economic well-being. These industries employ thousands of Ohioans who are thereby to a large degree tied to an economy dependent on the basic mineral resource of coal.

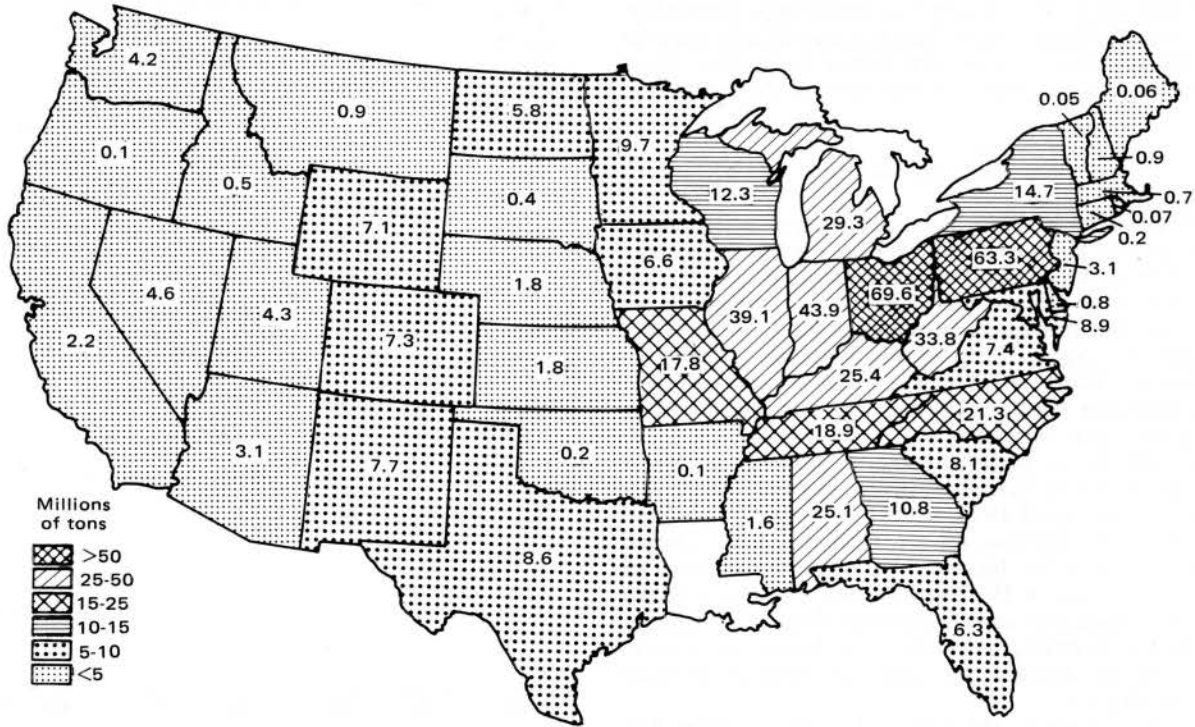


FIGURE 5.—Coal consumption in the conterminous United States, 1974 (U.S. Bureau of Mines, 1975).

Production patterns

Belmont County is the all-time coal production leader in Ohio (fig. 7). Over 606 million tons of coal have been produced from this county in the past 175 years, and Belmont led the state in 1974, as it has in most years, with over 15 million tons being reported. Belmont County is followed closely by Jefferson and Harrison Counties, in that order, as the counties of historically highest production. Following these three counties to round out the top ten largest

producers are, in order of decreasing production: Athens, Perry, Tuscarawas, Guernsey, Muskingum, Hocking, and Columbiana Counties.

The high production from Belmont, Jefferson, and Harrison Counties is to a very large degree tied to the famous Pittsburgh (No. 8) coal, which has its major Ohio occurrence in this general area, referred to as the Belmont field. Production from this coal and these counties will continue to be high for many years to come, with Monroe County to the south assuming more importance in the

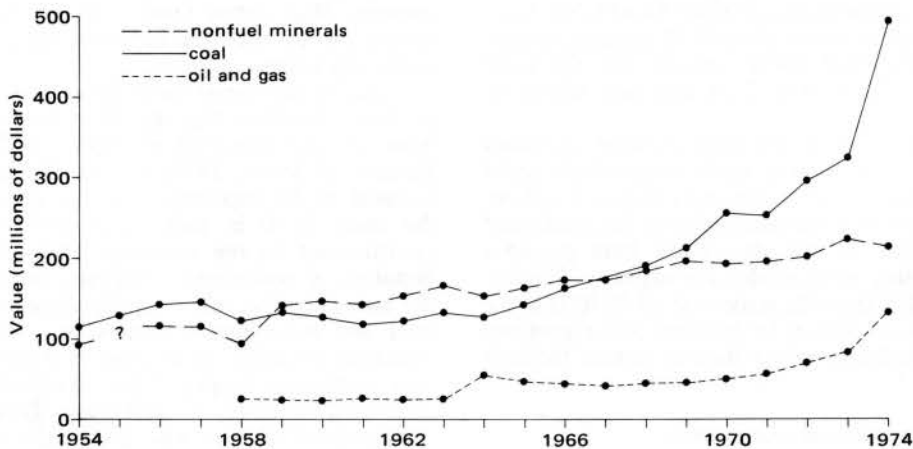


FIGURE 6.—Value of mineral commodities produced in Ohio, 1954-1974 (Ohio Division of Mines, annual reports). Nonfuel minerals include clay, dolomite, gravel, gypsum, limestone, salt, sand, sandstone, and shale.

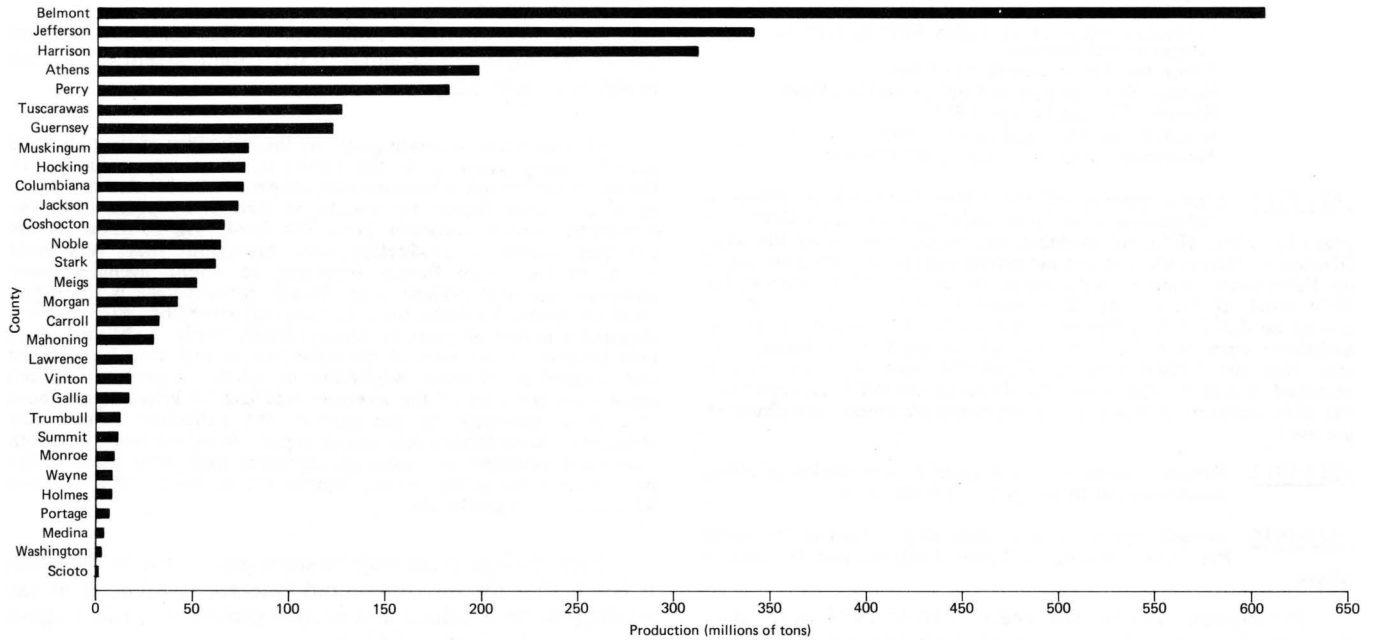


FIGURE 7.—Cumulative coal production, 1800-1974, by county.

future.

Athens, Hocking, and Perry Counties were previously major producers. Production in these counties was from the Hocking Valley field, primarily from the well-known Middle Kittanning (No. 6) and Upper Freeport (No. 7) coals. Mining in these three counties has diminished substantially in recent times, largely as a result of the declining reserves of the No. 6 and No. 7 coals.

Mining was formerly extensive in the Guernsey County Cambridge field. The principal coal mined there was the Upper Freeport (No. 7). Largely because of irregularities in coal thickness and a depletion of reserves, there is very little mining at present in this field. There has been, however, some revival of mining activity in Guernsey County in the northeastern portion of the county.

Columbiana County has historically been an important coal producer because of its relatively large resources and its closeness to the important upper Ohio River valley and Mahoning River valley industrial areas. Muskingum and Tuscarawas Counties have produced large tonnages of coal over the years for use in the ceramic and the electrical generating industries.

PRODUCTION BY COUNTY — 1800-1974

The production statistics, organized alphabetically by county, give the known production for each county by year from 1800 to 1974. These statistics provide an update of Klein's (1956) table, "Bituminous coal production in Ohio by county, 1800-1955." Klein's comments concerning source data are cited here verbatim:

SOURCES

1800-1871 Production data for the years 1800-1871 inclusive, with

minor corrections for the years 1841, 1842, 1843, 1849, 1867 and 1869, were selected from the book, "The First Century and a Quarter of American Coal Industry" by Howard N. Eavenson. This book presents estimates as well as likely actual production figures from many diverse sources. These sources are of varying reliability, and occasionally a questionable figure comes to light, e.g., coal production reported by Eavenson for Crawford and Licking Counties is not included, since there are no known coal beds located in these two counties. Crawford County in particular is located many miles from the Ohio coal-bearing area. The 1918 report of the Ohio Bureau of Mines, however, does show a small tonnage for Licking County.

Rather than copy each footnote indicating the author's sources we have tried to classify them, and the reader who needs to trace any production entry to its ultimate source is referred to the book, pp. 511-520. The many original areas explored by Mr. Eavenson include annual reports of government agencies, histories, magazine and newspaper articles, letters, railroad reports, and the like. The list in part contains:

Annual reports:

- Ohio Secretary of State
- Ohio Commissioner of Statistics
- Ohio Mines Inspector
- Ohio Geological Survey
- Ohio Archeological and Historical Society

Histories:

- Hardesty: History of Meigs County, Ohio
- Interstate Publishing Co: History of Hocking Valley
- Martzluff: History of Perry County, Ohio
- Stoddard: Economic History of Ohio
- Walker: History of Athens County, Ohio
- Whittlesey: History of the Coal and Iron Business, 1872

Magazines and newspapers:

- DeBow's Review
- Greensburg, Pa. Farmer's Register
- Hunt's Merchant's Magazine
- Lawrence, Pa. Journal
- Mining Magazine
- Pittsburg Gazette
- Pittsburg Mercury

Miscellaneous:

Columbus and Hocking Valley Railway reports
 Congressional Reports
 Kilbourne, John: *Gazeteer of Ohio*
 Mather, W.E., *Report to Coal Grove Co., 1844*
 Saward: *The Coal Trade, 1879*
 U.S.R.R. and Mining Register, 1865
 Miscellaneous letters, reports, surveys, etc.

1872-1912 Annual reports of the Chief Inspector of Mines in combination with Eavenson's figures through 1885. The years 1872 and 1873, for example, use totals reported by the Ohio Division of Mines, but contain estimated county distributions based on Eavenson's estimates with minor corrections. For instance, his 1874 total, if the county distribution is assumed to be correct, should be 4,307,875 rather than the 4,015,013 reported. With the additional correction for Crawford and Licking County tonnages of that year the revised total of 4,304,975 tons here recorded is obtained. Totals for the years 1881-1883 are derived from reports of the Ohio Division of Mines, but again estimated county distributions are used.

1913-1917 Annual reports of the Industrial Commission of Ohio, Department of Investigation and Statistics.

1918-1955 Annual reports of the Ohio Department of Industrial Relations, Division of Labor Statistics and Division of Mines.

Production data for the years 1956 to 1974 were taken from the Department of Industrial Relations annual Division

of Mines Reports.

As in all statistical tabulations of this kind some errors are to be expected. Klein (1956) called attention to the problem of reliability:

No completely accurate gauge of the reliability of the published data for early years up to the 1880's is, of course, available. Mr. Eavenson undertook a monumental assignment in his determination to secure these figures by county as well as by years from the numerous sources recorded here. His book will continue as the principal source of production data throughout these very early years. In the more formal reporting to public agencies many omissions are still evident even though the coverage is somewhat more adequate. Facilities for collecting and assembling such material required a period of years to become satisfactorily established. Even now laxness on the part of the collecting agency must be watched and avoided at all costs. Negligence or refusal to prepare required reports on the part of the operator and lack of information about new mine openings on the part of the collecting agency may contribute to an incomplete annual report. In recent years, however, continued attempts to encourage reporting have been made to the point where the public agency figures are probably within at least 95% of the true production.

Even though there may be some gaps in the information it is felt that the data presented here are as accurate as can reasonably be obtained and as such provide valuable insights into the coal industry of Ohio.

REFERENCES CITED

- Averitt, Paul, 1975, Coal resources of the United States, January 1, 1974: U.S. Geol. Survey Bull. 1412, 131 p.
 Brant, R. A., and DeLong, R. M., 1960, Coal resources of Ohio: Ohio Geol. Survey Bull. 58, 245 p.
 Evans, Lewis, 1755, A general map of the middle British colonies, in America: Philadelphia.
 Industrial Commission of Ohio, 1914-1918, Annual report 1913-1917: Columbus, Ohio, Ohio Dept. Investigation and Statistics.
 Klein, M. S., 1956, Bituminous coal production in Ohio by county, 1800-1955: Ohio Geol. Survey, one sheet.
 National Coal Association, 1975, Coal facts 1974-1975: Washington, D.C.
 Ohio Division of Mines, 1873-1913, 1919-1976, Annual report 1872-1912, 1918-1974: Columbus, Ohio, Ohio Dept. Indus. Relations.
 Ohio Energy Emergency Commission, 1975, Ohio energy profiles: Columbus, Ohio, 519 p.
 Struble, R. A., Collins, H. R., and Kohout, D. L., 1971, Deep-core investigation of low-sulfur coal possibilities in southeastern Ohio: Ohio Geol. Survey Rept. Inv. 81, 29 p.
 U.S. Bureau of Mines, 1975, Bituminous coal and lignite distribution, calendar year 1974: Washington, D.C., U.S. Dept. Interior.

ATHENS, BELMONT COUNTIES

Year	Total	Surface	Accumulative	Year	Total	Surface	Accumulative	Year	Total	Surface	Accumulative
ATHENS COUNTY				1885	823,139		10,931,564	1950	866,008	203,191	192,016,419
1820	200		200	1886	899,046		11,830,610	1951	965,910	145,165	192,982,329
1821	200		400	1887	1,083,543		12,914,153	1952	795,956	147,723	193,778,285
1822	200		600	1888	1,336,698		14,250,851	1953	551,143	75,187	194,329,428
1823	200		800	1889	1,466,328		15,717,179	1954	503,812	32,985	194,833,240
1824	200		1,000	1890	1,420,280		17,137,459	1955	649,296	67,126	195,482,536
1825	200		1,200	1891	1,374,320		18,511,779	1956	552,128	107,369	196,034,664
1826	200		1,400	1892	1,590,507		20,102,286	1957	479,038	74,939	196,513,702
1827	200		1,600	1893	1,632,851		21,735,137	1958	738,627	404,084	197,252,329
1828	200		1,800	1894	1,457,579		23,192,716	1959	340,530	94,933	197,592,859
1829	500		2,300	1895	1,435,744		24,628,460	1960	284,172	25,096	197,877,031
1830	900		3,200	1896	1,383,709		26,012,169	1961	235,006	40,139	198,112,037
1831	1,300		4,500	1897	1,299,454		27,311,623	1962	243,852	34,179	198,355,889
1832	1,600		6,100	1898	1,533,188		28,844,811	1963	182,506	29,588	198,538,395
1833	2,000		8,100	1899	1,761,775		30,606,586	1964	148,726	20,688	198,687,121
1834	2,400		10,500	1900	2,594,859		33,201,445	1965	143,180	30,439	198,830,301
1835	2,700		13,200	1901	3,066,533		36,267,978	1966	99,736	4,661	198,930,037
1836	3,000		16,200	1902	3,666,993		39,934,971	1967	119,819	19,531	199,049,856
1837	3,200		19,400	1903	3,905,904		43,840,875	1968	228,699	158,673	199,278,555
1838	3,200		22,600	1904	3,854,078		47,694,953	1969	113,426	65,447	199,391,981
1839	3,300		25,900	1905	3,848,440		51,543,393	1970	51,233	38,440	199,443,214
1840	3,368		29,268	1906	4,370,912		55,914,305	1971	12,164	12,164	199,455,378
1841	1,222		30,490	1907	4,753,044		60,667,349	1972	1,400	1,400	199,456,778
1842	1,297		31,787	1908	4,170,995		64,838,344	1973			199,456,778
1843	4,000		35,787	1909	4,354,074		69,192,418	1974	36,944	36,944	199,493,722
1844	36,000		71,787	1910	5,943,638		75,136,056				
1845	33,000		104,787	1911	4,532,595		79,668,651				
1846	30,000		134,787	1912	4,886,476		84,555,127				
1847	26,307		161,094	1913	5,239,631		89,794,758				
1848	28,604		189,698	1914	3,415,057		93,209,815				
1849	10,527		200,225	1915	2,536,793		95,746,608				
1850	10,273		210,498	1916	3,743,672		99,490,280				
1851	10,600		221,098	1917	6,313,619	200	105,803,899				
1852	17,287		238,385	1918	6,742,867		112,546,766				
1853	60,000		298,385	1919	5,181,643		117,728,409				
1854	80,000		378,385	1920	6,872,646		124,601,055				
1855	20,852		399,237	1921	4,154,994		128,756,049				
1856	11,675		410,912	1922	3,368,351		132,124,400				
1857	27,286		438,198	1923	4,444,351		136,568,751				
1858	37,000		475,198	1924	2,972,483		139,541,234				
1859	47,000		522,198	1925	2,502,126		142,043,360				
1860	56,204		578,402	1926	2,765,451	107,650	144,808,811				
1861	65,000		643,402	1927	1,229,575	42,127	146,038,386				
1862	74,000		717,402	1928	1,084,098	9,103	147,122,484				
1863	83,000		800,402	1929	2,875,220	5,159	149,997,704				
1864	92,000		892,402	1930	3,056,822		153,054,526				
1865	101,788		994,190	1931	2,698,595		155,753,121	1816	500		500
1866	190,036		1,184,226	1932	1,244,918		156,998,039	1817	500		1,000
1867	196,922		1,381,148	1933	2,093,732		159,091,771	1818	500		1,500
1868	168,590		1,549,738	1934	2,330,358		161,422,129	1819	500		2,000
1869	150,000		1,699,738	1935	2,368,358		163,790,487	1820	500		2,500
1870	131,140		1,830,878	1936	2,793,218		166,583,705	1821	500		3,000
1871	142,000		1,972,878	1937	2,918,258		169,501,963	1822	500		3,500
1872	550,000		2,522,878	1938	1,582,368		171,084,331	1823	600		4,100
1873	575,000		3,097,878	1939	1,649,151		172,733,482	1824	700		4,800
1874	448,726		3,546,604	1940	1,867,104		174,600,586	1825	700		5,500
1875	509,586		4,056,190	1941	2,031,070		176,631,656	1826	800		6,300
1876	484,675		4,540,865	1942	2,232,113		178,863,769	1827	800		7,100
1877	519,745		5,060,610	1943	2,069,486		180,933,255	1828	900		8,000
1878	623,126		5,683,736	1944	2,285,496	156,872	183,218,751	1829	900		8,900
1879	373,630		6,057,366	1945	1,868,266	296,070	185,087,017	1830	1,000		9,900
1880	835,000		6,892,366	1946	1,738,267	383,591	186,825,284	1831	1,000		10,900
1881	831,976		7,724,342	1947	2,009,233	482,885	188,834,517	1832	1,700		12,600
1882	923,624		8,647,966	1948	1,494,586	491,339	190,329,103	1833	2,400		15,000
1883	832,515		9,480,481	1949	821,308	237,669	191,150,411	1834	3,100		18,100
1884	627,944		10,108,425					1835	3,800		21,900
				BELMONT COUNTY							

BELMONT, CARROLL COUNTIES

Year	Total	Surface	Accumulative	Year	Total	Surface	Accumulative	Year	Total	Surface	Accumulative
BELMONT (cont.)				1901	1,544,832		25,495,457	1966	8,314,843	3,360,861	498,239,093
1836	4,500		26,400	1902	2,058,066		27,553,523	1967	10,649,565	4,592,481	508,888,658
1837	5,200		31,600	1903	2,612,025		30,165,548	1968	12,524,677	6,671,787	521,413,335
1838	5,900		37,500	1904	3,283,189		33,448,737	1969	14,109,302	7,373,874	535,522,637
1839	6,700		44,200	1905	3,871,846		37,320,583	1970	15,247,965	8,367,156	550,770,602
1840	7,528		51,728	1906	4,467,295		41,787,878	1971	13,753,001	8,635,047	564,523,603
1841	7,700		59,428	1907	6,355,582		48,143,460	1972	16,607,855	8,890,971	575,131,458
1842	7,900		67,328	1908	5,591,719		53,735,179	1973	15,862,841	8,726,767	590,994,299
1843	8,000		75,328	1909	5,993,418		59,728,597	1974	15,585,348	9,443,623	606,579,647
1844	8,000		83,328	1910	8,336,428		68,065,025				
1845	8,000		91,328	1911	8,040,333		76,105,358				
1846	8,000		99,328	1912	9,316,850		85,422,208				
1847	8,000		107,328	1913	10,454,795		95,877,003				
1848	9,000		116,328	1914	2,624,023		98,501,026				
1849	15,000		131,328	1915	4,403,754		102,904,780				
1850	21,000		152,328	1916	10,553,088		113,457,868				
1851	27,000		179,328	1917	11,156,62		124,614,494				
1852	34,000		213,328	1918	12,030,431	8,732	136,644,925				
1853	40,000		253,328	1919	9,999,648		146,644,573				
1854	80,000		333,328	1920	10,953,668	116,844	157,598,241				
1855	110,000		443,328	1921	11,634,028	16,398	169,232,269				
1856	125,000		568,328	1922	6,802,199	56,629	176,034,468				
1857	140,000		708,328	1923	13,295,035	93,246	189,329,503				
1858	138,000		846,328	1924	10,973,709	9,456	200,303,212				
1859	135,000		981,328	1925	9,263,176		209,566,388				
1860	133,000		1,114,328	1926	9,128,799		218,695,187				
1861	130,000		1,244,328	1927	3,694,788		222,389,975				
1862	128,000		1,372,328	1928	3,815,155		226,205,130				
1863	125,000		1,497,328	1929	7,187,338		233,392,468				
1864	122,000		1,619,328	1930	6,919,036		240,311,504				
1865	119,000		1,738,328	1931	6,702,362		247,013,866				
1866	115,870		1,854,198	1932	3,862,991		250,876,857	1853	40,000		40,000
1867	90,972		1,945,170	1933	5,933,491		256,810,348	1854	40,000		80,000
1868	69,626		2,014,796	1934	6,056,803		262,867,151	1855	40,000		120,000
1869	97,000		2,111,796	1935	5,782,459		268,649,610	1856	40,000		160,000
1870	123,901		2,235,697	1936	6,887,094		275,536,704	1857	40,000		200,000
1871	120,000		2,355,697	1937	7,786,096		283,322,800	1858	38,000		238,000
1872	229,000		2,584,697	1938	5,565,993		288,888,793	1859	36,000		274,000
1873	225,000		2,809,697	1939	4,953,697	69,344	293,842,490	1860	33,000		307,000
1874	164,158		2,973,855	1940	5,362,533		299,205,203	1861	30,000		337,000
1875	213,955		3,187,810	1941	8,209,536	74,006	307,414,559	1862	28,000		365,000
1876	199,834		3,387,644	1942	8,860,706	308,035	316,275,265	1863	26,000		391,000
1877	274,720		3,662,364	1943	8,739,167	448,027	325,014,432	1864	24,000		415,000
1878	305,000		3,967,364	1944	8,303,187	505,470	333,317,619	1865	21,000		436,000
1879	336,332		4,303,696	1945	7,994,882	1,134,456	341,312,501	1866	19,000		455,000
1880	462,082		4,765,778	1946	7,953,868	1,213,981	349,266,369	1867	16,000		471,000
1881	571,300		5,337,078	1947	9,242,973	1,692,242	358,509,342	1868	14,000		485,000
1882	650,000		5,987,078	1948	8,744,582	1,613,780	367,253,923	1869	12,000		497,000
1883	576,326		6,563,404	1949	6,435,371	1,029,376	373,689,295	1870	10,000		507,000
1884	643,129		7,206,533	1950	8,331,998	1,988,813	382,021,293	1871	9,000		516,000
1885	744,446		7,950,979	1951	9,708,811	2,209,919	391,730,104	1872	15,000		531,000
1886	573,779		8,524,758	1952	8,730,192	2,317,999	400,460,296	1873	15,000		546,000
1887	721,767		9,246,525	1953	7,110,804	1,053,808	407,571,100	1874	20,052		566,052
1888	1,108,806		10,355,331	1954	6,060,510	1,172,619	413,631,610	1875	60,000		626,052
1889	814,699		11,170,030	1955	6,932,101	1,258,572	420,563,711	1876	9,980		636,032
1890	827,568		11,997,598	1956	7,422,636	1,352,181	427,986,347	1877	9,328		645,360
1891	1,259,570		13,257,168	1957	7,573,861	1,969,098	435,560,208	1878	10,939		656,299
1892	1,249,423		14,506,591	1958	6,266,370	2,008,341	441,826,578	1879	18,272		674,571
1893	1,277,540		15,784,131	1959	6,538,310	2,198,008	448,364,888	1880	20,692		695,263
1894	1,193,329		16,977,460	1960	6,015,652	1,782,889	454,380,540	1881	173,600		868,863
1895	961,367		17,938,827	1961	5,444,365	1,533,439	459,824,905	1882	200,000		1,068,863
1896	1,082,964		19,021,791	1962	6,614,873	2,614,937	466,439,778	1883	173,615		1,242,478
1897	905,378		19,927,169	1963	7,934,782	3,598,161	474,374,560	1884	102,531		1,345,009
1898	1,168,567		21,095,736	1964	7,837,517	3,380,104	482,212,077	1885	150,695		1,495,704
1899	1,259,520		22,355,256	1965	7,712,173	3,373,019	489,924,250	1886	216,630		1,712,334
1900	1,595,369		23,950,625					1887	293,328		2,005,662

CARROLL COUNTY

Year	Total	Surface	Accumulative
CARROLL (cont.)			
1888	355,092		2,360,754
1889	430,995		2,791,749
1890	420,078		3,211,827
1891	205,521		3,417,348
1892	273,272		3,690,620
1893	290,259		3,980,879
1894	285,180		4,266,059
1895	326,670		4,592,729
1896	278,296		4,871,025
1897	162,537		5,033,562
1898	261,535		5,295,097
1899	212,051		5,507,148
1900	205,641		5,712,789
1901	254,510		5,967,299
1902	251,652		6,218,951
1903	326,095		6,545,046
1904	354,594		6,899,640
1905	235,826		7,135,466
1906	209,360		7,344,826
1907	371,542		7,716,368
1908	439,080		8,155,448
1909	398,085		8,553,533
1910	309,328		8,862,861
1911	269,687		9,132,548
1912	310,018		9,442,566
1913	369,437		9,812,003
1914	241,186	4,477	10,053,189
1915	328,407		10,381,596
1916	326,714		10,708,310
1917	487,092	1,356	11,195,402
1918	518,996		11,714,398
1919	361,823		12,076,221
1920	388,513		12,464,734
1921	287,833	3,500	12,752,567
1922	371,511		13,124,078
1923	465,854		13,589,932
1924	344,719	47,756	13,934,651
1925	312,895	82,395	14,247,546
1926	396,772	32,669	14,644,318
1927	416,783	11,042	15,061,101
1928	381,777		15,442,878
1929	334,392		15,777,270
1930	268,936		16,046,206
1931	275,983	3,745	16,322,189
1932	268,557		16,590,746
1933	212,293	5,294	16,803,039
1934	166,061	2,747	16,969,100
1935	217,311	5,740	17,186,411
1936	242,561	6,634	17,428,972
1937	274,525	26,852	17,703,497
1938	282,606	64,085	17,986,103
1939	413,071	139,406	18,399,174
1940	507,969	184,844	18,907,143
1941	553,623	174,525	19,460,766
1942	602,434	222,580	20,063,200
1943	609,716	307,298	20,672,916
1944	408,378	127,186	21,081,294
1945	470,555	192,941	21,551,849
1946	548,092	298,536	22,099,941
1947	436,297	195,019	22,536,238
1948	671,570	212,167	23,207,808
1949	570,687	340,588	23,778,495
1950	552,842	352,651	24,331,337
1951	336,865	199,064	24,668,202
1952	301,314	195,034	24,969,516

Year	Total	Surface	Accumulative
1953	366,533	287,307	25,336,049
1954	249,819	184,258	25,585,868
1955	414,328	346,048	26,000,196
1956	458,966	391,335	26,459,162
1957	323,816	262,899	26,782,978
1958	340,965	284,858	27,123,943
1959	522,894	438,412	27,646,837
1960	498,664	364,639	28,145,501
1961	524,431	408,801	28,669,932
1962	353,628	281,179	29,023,560
1963	304,290	254,740	29,327,850
1964	268,754	263,600	29,596,604
1965	267,870	264,374	29,864,474
1966	271,740	266,501	30,136,214
1967	444,410	432,576	30,580,624
1968	487,463	487,363	31,068,087
1969	362,402	362,102	31,430,489
1970	447,920	447,920	31,878,409
1971	466,412	466,412	32,344,821
1972	422,012	422,012	32,766,833
1973	258,029	258,029	33,024,862
1974	216,511	216,511	33,241,373
COLUMBIANA COUNTY			
1803	100		100
1804	100		200
1805	100		300
1806	100		400
1807	200		600
1808	200		800
1809	200		1,000
1810	300		1,300
1811	300		1,600
1812	300		1,900
1813	400		2,300
1814	400		2,700
1815	500		3,200
1816	500		3,700
1817	600		4,300
1818	600		4,900
1819	700		5,600
1820	700		6,300
1821	800		7,100
1822	800		7,900

Year	Total	Surface	Accumulative
1823	900		8,800
1824	900		9,700
1825	1,000		10,700
1826	1,300		12,000
1827	1,600		13,600
1828	2,000		15,600
1829	2,300		17,900
1830	2,700		20,600
1831	3,100		23,700
1832	3,500		27,200
1833	3,900		31,100
1834	4,300		35,400
1835	4,700		40,100
1836	5,100		45,200
1837	5,500		50,700
1838	5,900		56,600
1839	6,200		62,800
1840	6,520		69,320
1841	7,000		76,320
1842	7,500		83,820
1843	8,000		91,820
1844	8,000		99,820
1845	8,000		107,820
1846	8,000		115,820
1847	8,000		123,820
1848	8,000		131,820
1849	22,000		153,820
1850	36,000		189,820
1851	50,000		239,820
1852	64,000		303,820
1853	80,000		383,820
1854	120,000		503,820
1855	100,000		603,820
1856	80,000		683,820
1857	58,600		742,420
1858	6,400		748,820
1859	1,013		749,833
1860	1,483		751,316
1861	4,000		755,316
1862	6,000		761,316
1863	8,000		769,316
1864	11,000		780,316
1865	14,000		794,316
1866	16,881		811,197
1867	36,057		847,254
1868	215,639		1,062,893
1869	212,000		1,274,893
1870	209,677		1,484,570
1871	235,000		1,719,570
1872	340,000		2,059,570
1873	350,000		2,409,570
1874	287,814		2,697,384
1875	332,446		3,029,830
1876	371,167		3,400,997
1877	293,568		3,694,565
1878	383,466		4,078,031
1879	331,197		4,409,228
1880	541,466		4,950,694
1881	567,000		5,517,694
1882	630,000		6,147,694
1883	572,082		6,719,776
1884	469,708		7,189,484
1885	462,733		7,652,217
1886	336,063		7,988,280
1887	516,057		8,504,337

COLUMBIANA, COSHOCTON COUNTIES

Year	Total	Surface	Accumulative	Year	Total	Surface	Accumulative	Year	Total	Surface	Accumulative
COLUMBIANA (cont.)											
1888	466,191		8,970,528	1953	1,262,657	1,200,862	50,847,542	1889	156,341		1,850,106
1889	628,041		9,598,569	1954	1,230,421	1,156,049	52,077,963	1890	146,837		1,996,943
1890	541,851		10,140,420	1955	1,343,978	1,269,569	53,421,941	1891	205,793		2,202,736
1891	664,569		10,804,989	1956	1,417,695	1,384,402	54,839,636	1892	244,749		2,447,485
1892	610,179		11,415,168	1957	1,509,286	1,471,780	56,348,922	1893	305,769		2,753,254
1893	636,608		12,051,776	1958	1,697,834	1,648,469	58,046,756	1894	181,127		2,934,381
1894	501,783		12,553,559	1959	1,557,276	1,510,518	59,604,032	1895	161,723		3,096,104
1895	644,823		13,198,382	1960	1,378,900	1,345,257	60,982,932	1896	342,625		3,438,729
1896	516,005		13,714,387	1961	1,162,383	1,145,754	62,145,315	1897	326,981		3,765,710
1897	735,041		14,449,428	1962	1,131,574	1,110,921	63,276,889	1898	342,904		4,108,614
1898	886,053		15,335,481	1963	1,324,902	1,300,011	64,601,791	1899	364,702		4,473,316
1899	799,474		16,134,955	1964	1,533,786	1,513,113	66,135,577	1900	366,145		4,839,461
1900	718,108		16,853,063	1965	1,471,314	1,445,694	67,606,891	1901	360,635		5,200,096
1901	792,533		17,645,596	1966	1,355,002	1,319,032	68,961,893	1902	410,309		5,610,405
1902	868,426		18,514,022	1967	1,281,186	1,237,983	70,243,079	1903	422,221		6,032,626
1903	874,602		19,388,624	1968	1,135,865	1,104,523	71,378,944	1904	326,467		6,359,093
1904	721,144		20,109,768	1969	1,160,951	1,116,255	72,539,895	1905	388,932		6,748,025
1905	705,824		20,815,592	1970	1,241,934	1,181,276	73,781,829	1906	358,128		7,106,153
1906	554,047		21,369,639	1971	1,099,305	974,041	74,881,134	1907	397,229		7,503,382
1907	686,585		22,056,224	1972	1,031,157	1,002,369	75,912,291	1908	366,805		7,870,187
1908	516,780		22,573,004	1973	851,510	817,640	76,763,801	1909	390,302		8,260,489
1909	714,325		23,287,329	1974	762,468	714,967	77,526,269	1910	435,903		8,696,392
1910	740,345		24,027,674					1911	438,369		9,134,761
1911	668,039		24,695,713					1912	356,299		9,491,060
1912	482,878		25,178,591					1913	370,893		9,861,953
1913	565,254		25,743,845					1914	186,617		10,048,570
1914	398,108		26,141,953					1915	237,568		10,286,138
1915	543,943		26,685,896					1916	316,045		10,602,183
1916	518,862		27,204,758					1917	371,785		10,973,968
1917	616,925	341	27,821,683					1918	438,919		11,412,887
1918	738,473	22,016	28,560,156					1919	274,998		11,687,885
1919	650,971	20,628	29,211,127					1920	458,841		12,146,726
1920	957,811	47,451	30,168,938					1921	224,729		12,371,455
1921	566,880	43,838	30,735,818					1922	269,493		12,640,948
1922	699,231	89,529	31,435,049					1923	287,365		12,928,313
1923	974,092	179,531	32,409,141					1924	237,573		13,165,886
1924	279,921	49,179	32,689,062					1925	253,541		13,419,427
1925	290,999		32,979,161					1926	265,539		13,684,966
1926	394,929		33,374,090					1927	199,663		13,884,629
1927	346,147		33,720,237					1928	228,112		14,112,741
1928	255,402		33,975,639					1929	175,350		14,288,091
1929	267,972		34,243,611	1864	5,000		5,000	1930	148,218		14,436,309
1930	243,993		34,487,604	1865	10,000		15,000	1931	126,810		14,563,119
1931	130,894		34,618,498	1866	15,962		30,962	1932	123,299		14,686,418
1932	138,801		34,757,299	1867	30,516		61,478	1933	185,927	7,500	14,872,345
1933	185,302	9,300	34,942,601	1868	44,000		105,478	1934	196,089	7,161	15,068,434
1934	248,517	27,878	35,191,118	1869	58,000		163,478	1935	223,766	21,824	15,292,200
1935	285,614	125,777	35,476,732	1870	73,026		236,504	1936	228,424	14,661	15,520,624
1936	421,347	262,337	35,898,079	1871	42,000		278,504	1937	213,903	12,423	15,734,527
1937	324,106	120,310	36,222,185	1872	60,000		338,504	1938	186,819	20,854	15,921,346
1938	297,365	132,852	36,519,550	1873	60,000		398,504	1939	227,444	19,966	16,148,790
1939	620,626	394,363	37,140,176	1874	54,835		453,339	1940	266,633	22,714	16,415,423
1940	469,573	307,712	37,609,749	1875	90,669		544,008	1941	350,462	24,327	16,765,885
1941	885,892	659,362	38,495,641	1876	66,589		610,597	1942	311,347	45,620	17,077,232
1942	940,493	721,498	39,436,134	1877	18,560		629,157	1943	339,217	12,136	17,416,449
1943	855,316	655,132	40,291,450	1878	46,488		675,645	1944	284,744		17,701,193
1944	770,599	614,070	41,062,049	1879	213,331		888,976	1945	335,595	50,365	18,036,788
1945	695,094	572,514	41,757,143	1880	62,990		951,966	1946	446,669	132,215	18,483,457
1946	617,840	478,516	42,374,983	1881	80,000		1,031,966	1947	530,155	221,163	19,013,612
1947	820,568	669,183	43,195,551	1882	80,000		1,111,966	1948	780,875	484,678	19,794,487
1948	1,161,992	997,677	44,357,543	1883	80,000		1,191,966	1949	842,440	596,643	20,636,927
1949	1,208,589	1,062,853	45,566,132	1884	56,562		1,248,528	1950	964,851	748,656	21,601,778
1950	1,432,479	1,279,245	46,998,611	1885	99,609		1,348,137	1951	1,016,137	792,056	22,617,915
1951	1,401,357	1,304,370	48,399,968	1886	52,934		1,401,071	1952	1,025,481	858,529	23,643,396
1952	1,184,917	1,117,433	49,584,885	1887	124,791		1,525,862	1953	1,033,174	848,219	24,676,570
				1888	167,903		1,693,765				
				COSHOCTON COUNTY							
				1864	5,000		5,000				
				1865	10,000		15,000				
				1866	15,962		30,962				
				1867	30,516		61,478				
				1868	44,000		105,478				
				1869	58,000		163,478				
				1870	73,026		236,504				
				1871	42,000		278,504				
				1872	60,000		338,504				
				1873	60,000		398,504				
				1874	54,835		453,339				
				1875	90,669		544,008				
				1876	66,589		610,597				
				1877	18,560		629,157				
				1878	46,488		675,645				
				1879	213,331		888,976				
				1880	62,990		951,966				
				1881	80,000		1,031,966				
				1882	80,000		1,111,966				
				1883	80,000		1,191,966				
				1884	56,562		1,248,528				
				1885	99,609		1,348,137				
				1886	52,934		1,401,071				
				1887	124,791		1,525,862				
				1888	167,903		1,693,765				

Year	Total	Surface	Accumulative
COSHOCTON (cont.)			
1954	840,747	706,353	25,517,317
1955	957,826	813,201	26,475,143
1956	1,044,960	902,341	27,520,103
1957	1,073,478	938,315	28,593,581
1958	1,256,342	1,105,817	29,849,923
1959	1,760,182	1,583,463	31,610,105
1960	1,759,742	1,652,828	33,369,847
1961	1,936,195	1,796,268	35,306,042
1962	1,742,048	1,452,494	37,048,090
1963	1,914,513	1,590,708	38,962,603
1964	2,202,397	1,849,673	41,165,000
1965	2,507,304	2,122,054	43,672,304
1966	2,762,321	2,432,310	46,434,625
1967	2,821,019	2,550,911	49,255,644
1968	2,710,806	2,503,246	51,966,450
1969	2,773,284	2,341,231	54,739,734
1970	2,717,257	2,186,147	57,456,991
1971	2,306,339	1,869,560	59,763,330
1972	2,512,839	2,015,433	62,276,169
1973	2,053,403	1,279,650	64,329,572
1974	1,890,334	1,151,851	66,219,906
GALLIA COUNTY			
1840	616		616
1841	800		1,416
1842	1,000		2,416
1843	1,200		3,616
1844	120		3,736
1845	1,000		4,736
1846	1,400		6,136
1847	1,600		7,736
1848	1,800		9,536
1849	4,600		14,136
1850	7,400		21,536
1851	10,200		31,736
1852	13,000		44,736
1853	16,000		60,736
1854	24,000		84,736
1855	24,000		108,736
1856	24,000		132,736
1857	24,000		156,736
1858	23,000		179,736
1859	22,000		201,736
1860	21,000		222,736
1861	20,000		242,736
1862	19,000		261,736
1863	18,000		279,736
1864	17,000		296,736

Year	Total	Surface	Accumulative
1865	16,000		312,736
1866	15,000		327,736
1867	14,000		341,736
1868	13,000		354,736
1869	12,000		366,736
1870	11,000		377,736
1871	10,000		387,736
1872	12,000		399,736
1873	8,000		407,736
1874	6,800		414,536
1875	5,420		419,956
1876	12,716		432,672
1877	12,459		445,131
1878	8,776		453,907
1879	6,940		460,847
1880	19,941		480,788
1881	10,100		490,888
1882	15,000		505,888
1883	10,156		516,044
1884	20,372		536,416
1885	16,383		552,799
1886	17,424		570,223
1887	15,365		585,588
1888	16,722		602,310
1889	14,868		617,178
1890	15,160		632,338
1891	18,277		650,615
1892	19,634		670,249
1893	5,292		675,541
1894	13,367		688,908
1895	10,341		699,249
1896	6,671		705,920
1897	15,704		721,624
1898	17,391		739,015
1899	14,470		753,485
1900	16,138		769,623
1901	15,740		785,363
1902	26,450		811,813
1903	23,889		835,702
1904	18,979		854,681
1905	18,551		873,232
1906	43,895		917,127
1907	36,635		953,762
1908	13,692		967,454
1909	9,920		977,374
1910	13,923		991,297
1911	17,114		1,008,411
1912	27,523		1,035,934
1913	20,561		1,056,495
1914	14,886		1,071,381
1915	7,350		1,078,731
1916	6,883		1,085,614
1917	28,270		1,113,884
1918	27,122		1,141,006
1919	12,514		1,153,520
1920	22,207		1,175,727
1921	9,367		1,185,094
1922	22,993		1,208,087
1923	11,902		1,219,989
1924	12,308		1,232,297
1925	10,935		1,243,232
1926	3,001		1,246,233
1927	2,746		1,248,979
1928	1,960		1,250,939
1929	3,176		1,254,115

Year	Total	Surface	Accumulative
1930	3,710		1,257,825
1931	4,096		1,261,921
1932	4,096		1,266,017
1933	4,271		1,270,288
1934	5,103		1,275,391
1935	27,178		1,302,569
1936	49,373		1,351,942
1937	52,355		1,404,297
1938	30,052		1,434,349
1939	31,274		1,465,623
1940	55,318	10,524	1,520,941
1941	103,178	10,218	1,624,119
1942	101,485	7,377	1,725,604
1943	114,109	3,725	1,839,713
1944	108,671	1,418	1,948,384
1945	97,436		2,045,820
1946	76,286		2,122,106
1947	212,160	1,344	2,334,266
1948	393,457	19,217	2,727,723
1949	465,986	173,877	3,193,709
1950	576,696	256,105	3,770,405
1951	568,995	241,644	4,339,400
1952	638,591	416,524	4,977,991
1953	776,732	613,568	5,754,723
1954	868,118	667,428	6,622,841
1955	828,606	648,163	7,451,447
1956	757,371	683,366	8,208,818
1957	776,486	704,588	8,985,304
1958	794,448	721,266	9,779,752
1959	782,499	692,173	10,562,251
1960	866,426	777,900	11,428,677
1961	721,045	645,415	12,149,722
1962	743,341	651,618	12,893,063
1963	649,159	567,091	13,542,222
1964	614,805	528,728	14,157,027
1965	604,289	543,527	14,761,316
1966	290,654	248,762	15,051,970
1967	171,109	92,107	15,223,079
1968	109,834	91,634	15,332,913
1969	93,520	76,552	15,426,433
1970	209,285	198,092	15,635,718
1971	232,306	229,618	15,868,024
1972	104,920	104,920	15,972,944
1973	30,282	30,282	16,003,226
1974	109,566	109,566	16,112,792

Year	Total	Surface	Accumulative
GUERNSEY COUNTY			
1835	1,000		1,000
1836	1,200		2,200
1837	1,400		3,600
1838	1,700		5,300
1839	2,000		7,300
1840	2,234		9,534
1841	2,300		11,834
1842	2,300		14,134
1843	2,400		16,534
1844	2,400		18,934
1845	2,400		21,334
1846	2,400		23,734
1847	2,400		26,134
1848	2,400		28,534
1849	10,000		38,534
1850	17,000		55,534
1851	25,000		80,534
1852	32,000		112,534
1853	40,000		152,534
1854	60,000		212,534
1855	56,000		268,534
1856	52,000		320,534
1857	48,000		368,534
1858	47,000		415,534
1859	46,000		461,534
1860	46,000		507,534
1861	45,000		552,534
1862	45,000		597,534
1863	44,000		641,534
1864	44,000		685,534
1865	43,000		728,534
1866	43,000		771,534
1867	42,000		813,534
1868	41,008		854,542
1869	57,000		911,542
1870	73,389		984,931
1871	91,000		1,075,931
1872	120,000		1,195,931
1873	130,000		1,325,931
1874	105,000		1,430,931
1875	135,425		1,566,356
1876	145,320		1,711,676
1877	162,000		1,873,676
1878	180,000		2,053,676
1879	198,032		2,251,708
1880	168,480		2,420,188
1881	192,600		2,612,788
1882	250,000		2,862,788
1883	192,555		3,055,343
1884	375,427		3,430,770
1885	297,267		3,728,037
1886	433,800		4,161,837
1887	553,613		4,715,450
1888	383,728		5,099,178
1889	319,397		5,416,575
1890	547,072		5,963,647
1891	498,859		6,462,506
1892	572,281		7,034,787
1893	534,416		7,569,203
1894	641,561		8,210,764
1895	972,505		9,183,269
1896	1,068,453		10,251,722
1897	861,776		11,113,498
1898	1,176,524		12,290,022
1899	1,313,774		13,603,796

Year	Total	Surface	Accumulative
1900	1,904,381		15,508,177
1901	2,094,887		17,603,064
1902	2,968,108		20,571,172
1903	2,715,946		23,287,118
1904	3,084,220		26,371,338
1905	2,896,756		29,268,094
1906	3,348,934		32,617,028
1907	4,009,141		36,626,169
1908	2,926,448		39,552,617
1909	3,108,686		42,661,303
1910	4,473,022		47,134,325
1911	3,901,529		51,035,854
1912	4,333,963		55,369,817
1913	4,324,682		59,694,499
1914	2,970,815		62,665,314
1915	3,247,938		65,913,252
1916	4,397,262		70,310,514
1917	4,024,265	15,451	74,334,779
1918	4,497,303	93,720	78,832,082
1919	3,342,915	60,951	82,174,997
1920	3,760,463	86,206	85,935,460
1921	2,983,04	60,250	88,918,494
1922	2,115,065	15,610	91,033,559
1923	3,344,851		94,378,410
1924	2,633,807		97,012,217
1925	1,097,538		98,109,755
1926	1,231,533	12,600	99,341,288
1927	707,557	20,212	100,048,845
1928	556,494		100,605,339
1929	1,702,155		102,307,494
1930	1,868,137		104,175,631
1931	1,478,272		105,653,903
1932	1,224,954		106,878,857
1933	1,178,641		108,057,498
1934	1,242,836		109,300,334
1935	1,161,200		110,461,534
1936	1,063,660		111,525,194
1937	882,029		112,407,223
1938	547,173		112,954,396
1939	524,821		113,479,217
1940	543,946		114,023,163
1941	557,542		114,580,705
1942	625,195		115,205,900
1943	651,422	30,223	115,857,322
1944	789,418	171,174	116,646,740
1945	370,852	182,452	117,017,592
1946	311,539	137,397	117,329,131
1947	727,042	481,203	118,056,173
1948	383,016	246,020	118,439,189
1949	312,674	206,423	118,751,863
1950	523,116	423,221	119,274,979
1951	578,887	484,226	119,853,866
1952	471,002	403,445	120,324,868
1953	387,909	338,856	120,712,777
1954	405,185	329,826	121,117,962
1955	720,726	517,617	121,838,688
1956	633,158	571,184	122,471,846
1957	796,868	742,680	123,268,714
1958	293,955	248,601	123,562,669
1959	261,614	229,184	123,824,283
1960	246,601	217,127	124,070,884
1961	188,112	167,708	124,258,996
1962	273,813	249,496	124,532,809
1963	352,520	340,590	124,885,329
1964	298,348	285,904	125,183,677

Year	Total	Surface	Accumulative
1965	323,389	322,022	125,507,066
1966	1,844,730	1,844,615	127,351,796
1967	1,991,798	1,991,786	129,343,594
1968	482,280	470,280	129,825,874
1969	58,015	57,912	129,883,889
1970	619,108	619,108	130,502,997
1971	804,524	794,524	131,307,521
1972	1,164,127	794,727	132,471,648
1973	806,380	806,380	133,278,028
1974	872,879	872,879	134,150,907
HARRISON COUNTY			
1830	200		200
1831	900		1,100
1832	1,600		2,700
1833	2,300		5,000
1834	3,000		8,000
1835	3,700		11,700
1836	4,400		16,100
1837	5,100		21,200
1838	5,800		27,000
1839	6,600		33,600
1840	7,580		41,180
1841	7,700		48,880
1842	7,800		56,680
1843	8,000		64,680
1844	8,000		72,680
1845	8,000		80,680
1846	8,000		88,680
1847	8,000		96,680
1848	8,000		104,680
1849	9,000		113,680
1850	10,000		123,680
1851	10,000		133,680
1852	11,000		144,680
1853	12,000		156,680
1854	20,000		176,680
1855	20,000		196,680
1856	20,000		216,680
1857	20,000		236,680
1858	20,000		256,680
1859	20,000		276,680
1860	19,000		295,680
1861	19,000		314,680
1862	19,000		333,680
1863	19,000		352,680
1864	18,000		370,680

Year	Total	Surface	Accumulative
HARRISON (cont.)			
1865	18,000		388,680
1866	18,000		406,680
1867	18,000		424,680
1868	18,000		442,680
1869	18,000		460,680
1870	16,990		477,670
1871	17,600		495,270
1872	25,000		520,270
1873	25,000		545,270
1874	32,569		577,839
1875	26,000		603,839
1876	20,678		624,517
1877	19,820		644,337
1878	15,606		659,943
1879	25,286		685,229
1880	58,260		743,489
1881	17,800		761,289
1882	20,000		781,289
1883	17,797		799,086
1884			799,086
1885			799,086
1886	5,509		804,595
1887	4,032		808,627
1888	2,865		811,492
1889	1,080		812,572
1890	4,792		817,364
1891	4,316		821,680
1892	8,646		830,326
1893	14,698		845,024
1894	27,537		872,561
1895	26,003		898,564
1896	28,391		926,955
1897	28,159		955,114
1898	38,144		993,258
1899	29,852		1,023,110
1900	36,087		1,059,197
1901	111,847		1,171,044
1902	293,841		1,464,885
1903	249,106		1,713,991
1904	307,206		2,021,197
1905	402,679		2,423,876
1906	335,928		2,759,804
1907	489,118		3,248,922
1908	447,805		3,696,727
1909	576,162		4,272,889
1910	599,741		4,872,630
1911	476,914		5,349,544
1912	750,831		6,100,375
1913	752,600		6,852,975
1914	203,485		7,056,460
1915	308,570		7,365,030
1916	990,641	67,213	8,355,671
1917	1,222,561	286,987	9,578,232
1918	1,772,670	487,665	11,350,902
1919	1,452,061	404,977	12,802,963
1920	1,917,607	665,627	14,720,570
1921	1,879,116	441,090	16,599,686
1922	2,302,547	1,328,510	18,902,233
1923	2,854,753	1,093,905	21,756,986
1924	2,422,023	1,377,284	24,179,009
1925	2,836,495	1,930,525	27,015,504
1926	2,478,139	1,522,567	29,493,643
1927	2,005,068	1,469,206	31,498,711
1928	2,395,917	1,294,859	33,894,628
1929	2,722,889	1,182,128	36,617,517

Year	Total	Surface	Accumulative
1930	2,288,553	887,439	38,906,070
1931	2,074,504	682,757	40,980,574
1932	1,780,414	534,490	42,760,988
1933	2,446,761	731,544	45,207,749
1934	2,249,630	592,052	47,457,379
1935	2,476,161	691,916	49,933,540
1936	2,707,940	640,699	52,641,480
1937	2,521,418	524,755	55,162,898
1938	1,786,741	246,093	56,949,639
1939	2,582,565	632,104	59,532,204
1940	2,917,211	664,919	62,449,415
1941	3,822,605	1,485,467	66,272,020
1942	5,297,796	2,851,253	71,569,816
1943	5,946,876	3,546,927	77,516,692
1944	6,382,764	3,814,697	83,899,456
1945	6,415,411	4,495,135	90,314,867
1946	6,111,595	4,503,637	96,426,462
1947	6,623,052	4,890,659	103,049,514
1948	6,405,794	4,956,996	109,455,308
1949	5,216,264	4,266,817	114,671,572
1950	5,659,971	4,797,212	120,331,543
1951	5,713,514	4,633,078	126,045,570
1952	5,832,424	4,753,749	131,877,481
1953	7,076,376	5,957,231	138,953,857
1954	6,208,299	5,084,833	145,162,156
1955	8,515,382	6,386,268	153,677,538
1956	8,666,938	7,205,802	162,344,476
1957	8,960,372	6,070,276	171,304,848
1958	6,833,724	4,803,472	178,138,572
1959	7,633,469	5,162,554	185,772,041
1960	7,378,734	4,811,565	193,150,775
1961	7,414,130	4,912,991	200,564,905
1962	7,829,447	4,856,299	208,394,352
1963	8,358,417	4,490,592	216,752,769
1964	7,639,005	3,479,180	224,391,774
1965	8,478,034	4,080,282	232,869,808
1966	10,456,699	5,829,795	243,326,507
1967	10,802,183	5,785,578	254,128,690
1968	10,526,024	4,796,990	264,654,714
1969	10,923,722	4,807,558	275,578,436
1970	11,381,684	5,883,917	286,960,120
1971	7,909,679	4,643,014	294,869,799
1972	7,343,488	3,832,928	302,213,287
1973	6,837,982	3,094,103	309,051,269
1974	5,494,491	2,505,637	314,545,760

Year	Total	Surface	Accumulative
HOCKING COUNTY			
1840	673		673
1841	1,222		1,895
1842	1,297		3,192
1843	1,720		4,912
1844	2,500		7,412
1845	3,300		10,712
1846	4,079		14,791
1847	7,630		22,421
1848	10,444		32,865
1849	10,527		43,392
1850	10,273		53,665
1851	10,600		64,265
1852	17,287		81,552
1853	20,521		102,073
1854	45,289		147,362
1855	20,852		168,214
1856	11,675		179,889
1857	27,287		207,176
1858	25,000		232,176
1859	22,800		254,976
1860	20,689		275,665
1861	24,000		299,665
1862	27,600		327,265
1863	31,200		358,465
1864	34,700		393,165
1865	38,200		431,365
1866	42,587		473,952
1867	52,355		526,307
1868	68,277		594,584
1869	72,000		666,584
1870	75,560		742,144
1871	125,000		867,144
1872	560,000		1,427,144
1873	575,000		2,002,144
1874	325,402		2,327,546
1875	509,587		2,837,133
1876	484,676		3,321,809
1877	519,745		3,841,554
1878	623,123		4,464,677
1879	208,123		4,672,800
1880	415,000		5,087,800
1881	589,100		5,676,900
1882	650,000		6,326,900
1883	589,159		6,916,059
1884	372,694		7,288,753
1885	656,441		7,945,194
1886	741,571		8,686,765
1887	853,063		9,539,828
1888	1,086,538		10,626,366
1889	911,488		11,537,854
1890	1,239,576		12,777,430
1891	1,622,429		14,399,859
1892	1,863,303		16,263,162
1893	1,889,996		18,153,158
1894	1,453,391		19,606,549
1895	1,432,741		21,039,290
1896	1,351,511		22,390,801
1897	1,381,414		23,772,215
1898	1,254,740		25,026,955
1899	1,929,753		26,956,708
1900	2,311,679		29,268,387
1901	2,348,869		31,617,256
1902	2,118,805		33,736,061
1903	1,967,636		35,703,697
1904	1,894,869		37,598,566

HOCKING, HOLMES COUNTIES

Year	Total	Surface	Accumulative	Year	Total	Surface	Accumulative	Year	Total	Surface	Accumulative
HOCKING (cont.)				1970	165,648	165,121	76,649,312	1880	17,460		561,460
1905	1,695,763		39,294,329	1971	177,450	177,287	76,826,762	1881	24,000		585,460
1906	1,553,507		40,847,836	1972	166,688	166,688	76,993,450	1882	24,000		609,460
1907	1,392,616		42,240,452	1973	246,762	246,762	77,240,212	1883	24,000		633,460
1908	1,282,647		43,523,099	1974	364,197	364,197	77,604,409	1884	12,052		645,512
1909	1,036,743		44,559,842					1885	11,459		656,971
1910	1,451,147		46,010,989					1886	12,670		669,641
1911	1,547,839		47,558,828					1887	10,526		680,167
1912	2,046,175		49,605,003					1888	8,121		688,288
1913	1,587,163		51,192,166					1889	10,142		698,430
1914	1,192,230		52,384,396					1890	13,358		711,788
1915	1,421,117		53,805,513					1891	16,811		728,599
1916	1,435,188		55,240,701					1892	16,666		745,265
1917	2,211,858		57,452,559					1893	14,181		759,446
1918	2,332,304		59,784,863					1894	15,616		775,062
1919	1,162,366		60,947,229					1895	12,665		787,727
1920	1,855,499		62,802,728					1896	10,164		797,891
1921	567,704		63,370,432					1897	19,313		817,204
1922	763,098		64,133,530					1898	15,601		832,805
1923	878,797		65,012,327					1899	12,321		845,126
1924	712,102		65,724,429					1900	12,966		858,092
1925	865,557	23,781	66,589,986					1901	16,548		874,640
1926	608,129	15,878	67,198,115					1902	17,187		891,827
1927	256,161		67,454,276					1903	32,099		923,926
1928	284,937		67,739,213					1904	30,850		954,776
1929	458,710		68,197,923					1905	24,820		979,596
1930	326,069	1,561	68,523,992					1906	43,080		1,022,676
1931	319,452	750	68,843,444	1840	200		200	1907	14,447		1,037,123
1932	125,667		68,969,111	1841	200		400	1908	18,768		1,055,891
1933	181,923		69,151,034	1842	200		600	1909	15,844		1,071,735
1934	170,331	700	69,321,365	1843	200		800	1910	13,203		1,084,938
1935	162,071	9,201	69,483,436	1844	200		1,000	1911	11,242		1,096,180
1936	223,187	7,690	69,706,623	1845	200		1,200	1912	11,059		1,107,239
1937	215,469	22,166	69,922,092	1846	300		1,500	1913	9,998		1,117,237
1938	226,113	8,275	70,148,205	1847	400		1,900	1914	15,883		1,133,120
1939	254,321	25,694	70,402,526	1848	400		2,300	1915	16,464		1,149,584
1940	246,257		70,648,783	1849	4,300		6,600	1916	14,826		1,164,410
1941	378,154	24,439	71,026,937	1850	8,200		14,800	1917	20,144		1,184,554
1942	415,479	15,876	71,442,416	1851	12,100		26,900	1918	13,431		1,197,985
1943	375,890		71,818,306	1852	16,000		42,900	1919	11,512		1,209,497
1944	448,040	13,910	72,266,346	1853	20,000		62,900	1920	9,645		1,219,142
1945	662,719	259,306	72,929,065	1854	32,000		94,900	1921	9,484		1,228,626
1946	737,578	366,716	73,666,643	1855	32,000		126,900	1922	12,751		1,241,377
1947	673,889	211,308	74,340,532	1856	32,000		158,900	1923	14,959		1,256,336
1948	398,706	63,057	74,739,238	1857	32,000		190,900	1924	27,221		1,283,557
1949	136,022	29,525	74,875,260	1858	30,400		221,300	1925	18,577		1,302,134
1950	113,901	44,092	74,989,161	1859	28,800		250,100	1926	17,172		1,319,306
1951	137,676	77,660	75,126,837	1860	27,200		277,300	1927	20,716		1,340,022
1952	86,063	21,287	75,212,900	1861	25,600		302,900	1928	15,282		1,355,304
1953	65,478	16,872	75,278,378	1862	24,000		326,900	1929	21,929		1,377,233
1954	48,191	15,964	75,326,569	1863	22,400		349,300	1930	18,219		1,395,452
1955	84,689	59,224	75,411,258	1864	20,800		370,100	1931	9,057	1,483	1,404,509
1956	62,336	36,789	75,473,594	1865	19,200		389,300	1932	11,438	1,761	1,415,947
1957	88,471	62,340	75,562,065	1866	17,600		406,900	1933	14,438		1,430,385
1958	67,313	47,606	75,629,378	1867	16,000		422,900	1934	28,817	5,169	1,459,202
1959	39,107	17,980	75,668,485	1868	14,400		437,300	1935	52,290	22,389	1,511,492
1960	60,571	47,923	75,729,056	1869	12,200		449,500	1936	51,241	12,835	1,562,733
1961	54,919	48,360	75,783,975	1870	10,073		459,573	1937	39,358	4,243	1,602,091
1962	78,850	72,967	75,862,825	1871	6,000		465,573	1938	37,985	5,801	1,640,076
1963	81,965	74,814	75,944,790	1872	10,000		475,573	1939	38,764	4,208	1,678,840
1964	70,976	64,192	76,015,766	1873	5,000		480,573	1940	38,466	4,208	1,717,306
1965	104,084	101,476	76,119,850	1874	3,616		484,189	1941	45,953	14,290	1,763,259
1966	78,579	75,723	76,198,429	1875	14,000		498,189	1942	21,789	700	1,785,048
1967	59,995	58,955	76,258,424	1876	12,600		510,789	1943	24,848	12,566	1,809,896
1968	129,834	129,834	76,388,258	1877	11,200		521,989	1944	8,924		1,818,820
1969	95,406	95,290	76,483,664	1878	9,710		531,699				
				1879	12,301		544,000				
				HOLMES COUNTY							
				1840	200		200	1905	24,820		979,596
				1841	200		400	1906	43,080		1,022,676
				1842	200		600	1907	14,447		1,037,123
				1843	200		800	1908	18,768		1,055,891
				1844	200		1,000	1909	15,844		1,071,735
				1845	200		1,200	1910	13,203		1,084,938
				1846	300		1,500	1911	11,242		1,096,180
				1847	400		1,900	1912	11,059		1,107,239
				1848	400		2,300	1913	9,998		1,117,237
				1849	4,300		6,600	1914	15,883		1,133,120
				1850	8,200		14,800	1915	16,464		1,149,584
				1851	12,100		26,900	1916	14,826		1,164,410
				1852	16,000		42,900	1917	20,144		1,184,554
				1853	20,000		62,900	1918	13,431		1,197,985
				1854	32,000		94,900	1919	11,512		1,209,497
				1855	32,000		126,900	1920	9,645		1,219,142
				1856	32,000		158,900	1921	9,484		1,228,626
				1857	32,000		190,900	1922	12,751		1,241,377
				1858	30,400		221,300	1923	14,959		1,256,336
				1859	28,800		250,100	1924	27,221		1,283,557
				1860	27,200		277,300	1925	18,577		1,302,134
				1861	25,600		302,900	1926	17,172		1,319,306
				1862	24,000		326,900	1927	20,716		1,340,022
				1863	22,400		349,300	1928	15,282		1,355,304
				1864	20,800		370,100	1929	21,929		1,377,233
				1865	19,200		389,300	1930	18,219		1,395,452
				1866	17,600		406,900	1931	9,057	1,483	1,404,509
				1867	16,000		422,900	1932	11,438	1,761	1,415,947
				1868	14,400		437,300	1933	14,438		1,430,385
				1869	12,200		449,500	1934	28,817	5,169	1,459,202
				1870	10,073		459,573	1935	52,290	22,389	1,511,492
				1871	6,000		465,573	1936	51,241	12,835	1,562,733
				1872	10,000		475,573	1937	39,358	4,243	1,602,091
				1873	5,000		480,573	1938	37,985	5,801	1,640,076
				1874	3,616		484,189	1939	38,764	4,208	1,678,840
				1875	14,000		498,189	1940	38,466	4,208	1,717,306
				1876	12,600		510,789	1941	45,953	14,290	1,763,259
				1877	11,200		521,989	1942	21,789	700	1,785,048
				1878	9,710		531,699	1943	24,848	12,566	1,809,896
				1879	12,301		544,000	1944	8,924		1,818,820

Year	Total	Surface	Accumulative
JEFFERSON (cont.)			
1965	5,040,840	4,187,528	296,950,371
1966	4,806,555	3,967,578	301,756,926
1967	4,716,127	3,793,226	306,473,053
1968	5,026,318	4,193,410	311,499,371
1969	5,148,433	4,268,950	316,647,804
1970	5,110,042	4,275,139	321,757,846
1971	5,216,346	4,573,864	326,974,192
1972	5,787,343	4,935,937	332,761,535
1973	5,022,655	4,143,493	337,784,190
1974	5,045,104	4,272,811	342,829,294
LAWRENCE COUNTY			
1844	1,000		1,000
1845	10,000		11,000
1846	19,000		30,000
1847	28,000		58,000
1848	37,000		95,000
1849	46,000		141,000
1850	55,000		196,000
1851	64,000		260,000
1852	72,000		332,000
1853	80,000		412,000
1854	120,000		532,000
1855	114,000		646,000
1856	108,000		754,000
1857	100,000		854,000
1858	102,000		956,000
1859	104,000		1,060,000
1860	106,000		1,166,000
1861	108,000		1,274,000
1862	110,000		1,384,000
1863	112,000		1,496,000
1864	114,000		1,610,000
1865	117,000		1,727,000
1866	120,000		1,847,000
1867	100,006		1,947,006
1868	88,967		2,035,973
1869	72,000		2,107,973
1870	56,390		2,164,363
1871	61,000		2,225,363
1872	125,000		2,350,363
1873	161,191		2,511,554
1874	78,446		2,590,000
1875	122,484		2,712,484
1876	103,831		2,816,315
1877	90,336		2,906,651
1878	108,074		3,014,725

Year	Total	Surface	Accumulative
1879	132,646		3,147,371
1880	139,462		3,286,833
1881	153,800		3,440,633
1882	200,000		3,640,633
1883	158,793		3,799,426
1884	176,412		3,975,838
1885	145,916		4,121,754
1886	166,933		4,288,687
1887	143,559		4,432,246
1888	137,806		4,570,052
1889	111,815		4,681,867
1890	108,505		4,790,372
1891	88,440		4,878,812
1892	127,074		5,005,886
1893	80,741		5,086,627
1894	75,292		5,161,919
1895	125,280		5,287,199
1896	81,746		5,368,945
1897	124,448		5,493,393
1898	68,835		5,562,228
1899	135,064		5,697,292
1900	112,873		5,810,165
1901	143,678		5,953,843
1902	186,635		6,140,478
1903	249,139		6,389,617
1904	194,192		6,583,809
1905	212,949		6,796,758
1906	257,049		7,053,807
1907	246,562		7,300,369
1908	180,265		7,480,634
1909	214,685		7,695,319
1910	190,465		7,885,784
1911	84,567		7,970,351
1912	88,104		8,058,455
1913	195,389		8,253,844
1914	162,709		8,416,553
1915	131,971		8,548,524
1916	166,261		8,714,785
1917	241,333		8,956,118
1918	322,917		9,279,035
1919	140,433		9,419,468
1920	286,399		9,705,867
1921	58,731		9,764,598
1922	156,151		9,920,749
1923	135,159		10,055,908
1924	112,826		10,168,734
1925	122,795		10,291,529
1926	105,340		10,396,869
1927	126,710		10,523,579
1928	108,538		10,632,117
1929	117,158		10,749,275
1930	81,116		10,830,391
1931	59,330		10,889,721
1932	56,964		10,946,685
1933	71,807		11,018,492
1934	60,403		11,078,895
1935	72,517		11,151,412
1936	85,580	824	11,236,992
1937	95,543	1,064	11,332,535
1938	71,717	707	11,404,252
1939	85,363	969	11,489,615
1940	51,304	362	11,540,919
1941	133,603		11,674,522
1942	74,069		11,748,591
1943	49,743		11,798,334

Year	Total	Surface	Accumulative
1944	57,188	222	11,855,522
1945	53,043	148	11,908,565
1946	49,219	974	11,957,784
1947	57,996	24,583	12,015,780
1948	163,538	30,028	12,179,318
1949	143,879	38,574	12,323,197
1950	180,905	102,142	12,504,102
1951	225,537	165,886	12,729,639
1952	245,640	191,986	12,975,279
1953	151,738	119,117	13,127,017
1954	192,372	171,457	13,319,389
1955	431,847	399,809	13,751,236
1956	366,938	304,436	14,118,174
1957	297,711	278,013	14,415,885
1958	225,613	218,529	14,641,498
1959	396,088	391,999	15,037,586
1960	442,617	439,537	15,480,203
1961	392,348	389,908	15,872,551
1962	390,079	387,573	16,262,630
1963	333,169	330,541	16,595,799
1964	304,570	301,736	16,900,369
1965	294,503	292,675	17,194,872
1966	267,965	267,130	17,462,837
1967	175,608	174,667	17,638,445
1968	298,397	298,156	17,936,842
1969	333,512	333,310	18,270,354
1970	320,865	320,738	18,591,219
1971	199,623	199,554	18,790,842
1972	48,221	48,203	18,839,045
1973	21,984	21,984	18,861,029
1974	96,294	96,294	18,957,323
MAHONING COUNTY			
1840	200		200
1841	500		700
1842	700		1,400
1843	1,000		2,400
1844	1,000		3,400
1845	4,100		7,500
1846	3,700		11,200
1847	4,000		15,200
1848	15,000		30,200
1849	25,851		56,051
1850	29,000		85,051
1851	32,000		117,051
1852	36,000		153,051
1853	40,000		193,051
1854	140,000		333,051

MAHONING, MEDINA COUNTIES

Year	Total	Surface	Accumulative	Year	Total	Surface	Accumulative	Year	Total	Surface	Accumulative
MAHONING (cont.)				1920	55,985	1,400	9,178,169				
1855	150,000		483,051	1921	40,550	404	9,218,719				
1856	162,000		645,051	1922	58,182		9,276,901				
1857	173,600		818,651	1923	66,328		9,343,229				
1858	168,000		986,651	1924	56,998		9,400,227				
1859	162,000		1,148,651	1925	50,814		9,451,041				
1860	156,701		1,305,352	1926	59,203		9,510,244				
1861	144,000		1,449,352	1927	56,783		9,567,027				
1862	132,000		1,581,352	1928	58,413		9,625,440				
1863	120,000		1,701,352	1929	62,183		9,687,623				
1864	108,000		1,809,352	1930	60,909	347	9,748,532				
1865	96,000		1,905,352	1931	56,530	300	9,805,062				
1866	12,708		1,918,060	1932	89,442		9,894,504				
1867	84,643		2,002,703	1933	121,621	5,496	10,016,125				
1868	67,775		2,070,478	1934	115,434		10,131,559				
1869	88,000		2,158,478	1935	97,010		10,228,569				
1870	108,830		2,267,308	1936	92,547		10,321,116				
1871	125,000		2,392,308	1937	161,822	65,935	10,482,938				
1872	270,000		2,662,308	1938	265,164	159,539	10,748,102				
1873	257,507		2,919,815	1939	434,776	362,372	11,182,878				
1874	91,031		3,010,846	1940	456,532	354,211	11,639,410				
1875	271,689		3,282,535	1941	421,562	385,544	12,060,972				
1876	82,484		3,365,019	1942	313,078	295,308	12,374,050				
1877	106,950		3,471,969	1943	259,302	248,714	12,633,352				
1878	156,896		3,628,865	1944	280,691	270,141	12,914,043				
1879	54,076		3,682,941	1945	183,877	173,769	13,097,920				
1880	347,635		4,030,576	1946	104,972	99,262	13,202,892				
1881	244,400		4,274,976	1947	185,298	179,348	13,388,190				
1882	300,000		4,574,976	1948	507,507	502,629	13,895,697				
1883	244,371		4,819,347	1949	535,833	531,594	14,431,530				
1884	241,599		5,060,946	1950	634,034	631,165	15,065,564				
1885	275,944		5,336,890	1951	753,674	753,674	15,819,238				
1886	313,040		5,649,930	1952	722,730	722,730	16,541,968				
1887	272,349		5,922,279	1953	599,968	599,968	17,141,936				
1888	231,035		6,153,314	1954	663,000	663,000	17,804,936				
1889	217,118		6,370,432	1955	687,760	687,567	18,492,696				
1890	228,761		6,599,193	1956	602,351	602,351	19,095,047				
1891	232,346		6,831,539	1957	704,761	704,761	19,799,808				
1892	242,515		7,074,054	1958	684,878	684,878	20,484,686				
1893	198,370		7,272,424	1959	903,333	903,333	21,388,019				
1894	97,062		7,369,486	1960	982,460	982,460	22,370,479				
1895	101,866		7,471,352	1961	1,060,032	1,059,968	23,430,511				
1896	52,277		7,523,629	1962	1,049,076	1,049,076	24,479,587				
1897	92,283		7,615,912	1963	899,123	899,123	25,378,710				
1898	75,149		7,691,061	1964	722,208	722,208	26,100,918				
1899	74,309		7,765,370	1965	559,028	559,028	26,659,946				
1900	109,348		7,874,718	1966	518,927	518,927	27,178,873				
1901	52,765		7,927,483	1967	563,502	563,502	27,742,375				
1902	94,773		8,022,256	1968	505,207	505,207	28,247,582				
1903	89,218		8,111,474	1969	396,278	396,278	28,643,860				
1904	86,495		8,197,969	1970	444,524	444,524	29,088,384				
1905	117,074		8,315,043	1971	456,458	456,458	29,544,842				
1906	121,412		8,436,455	1972	384,750	384,750	29,929,592				
1907	95,280		8,531,735	1973	398,266	398,266	30,327,858				
1908	86,326		8,618,061	1974	499,437	499,437	30,827,295				
1909	63,974		8,682,035								
1910	66,312		8,748,347								
1911	64,276		8,812,623								
1912	47,511		8,860,134								
1913	27,457		8,887,591								
1914	26,055		8,913,646								
1915	24,167		8,937,813								
1916	28,842		8,966,655								
1917	50,537		9,017,192								
1918	64,832		9,082,024								
1919	40,160		9,122,184								
				MEDINA COUNTY							
				1871	1,200		1,200				
				1872	2,400		3,600				
				1873	3,680		7,280				
				1874	4,800		12,080				
				1875	80,000		92,080				
				1876	81,600		173,680				
				1877	83,160		256,840				
				1878	90,000		346,840				
				1879	97,000		443,840				
				1880	106,000		549,840				
				1881	30,200		580,040				
				1882	32,000		612,040				
				1883	30,186		642,226				
				1884	77,160		719,386				
				1885	152,721		872,107				
				1886	252,411		1,124,518				
				1887	225,487		1,350,005				
				1888	198,452		1,548,457				
				1889	132,706		1,681,163				
				1890	181,861		1,863,024				
				1891	157,410		2,020,434				
				1892	220,149		2,240,583				
				1893	197,405		2,437,988				
				1894	143,196		2,581,184				
				1895	265,411		2,846,595				
				1896	195,669		3,042,264				
				1897	159,987		3,202,251				
				1898	147,714		3,349,965				
				1899	158,216		3,508,181				
				1900	152,767		3,660,948				
				1901	183,391		3,844,339				
				1902	139,933		3,984,272				
				1903	136,803		4,121,075				
				1904	103,910		4,224,985				
				1905	91,205		4,316,190				
				1906	104,729		4,420,919				
				1907	47,181		4,468,100				
				1908	18,103		4,486,203				
				1909	12,465		4,498,668				
				1910	27,604		4,526,272				
				1911	16,942		4,543,214				
				1912	10,395		4,553,609				
				1913	9,990		4,563,599				
				1914	10,674		4,574,273				
				1915	7,717		4,581,990				
				1916	9,205		4,591,195				
				1917	10,088		4,601,283				
				1918	7,353		4,608,636				
				1919	5,249		4,613,885				
				1920	6,652		4,620,537				
				1921	2,404		4,622,941				
				1922	1,222		4,624,163				
				1923	10,871		4,635,034				
				1924	6,336		4,641,370				
				1925	7,409		4,648,779				

Year	Total	Surface	Accumulative
MEDINA (cont.)			
1926	7,978		4,656,757
1927	5,752		4,662,509
1928	6,475		4,668,984
1929	6,651		4,675,635
1930	2,624		4,678,259
1931	3,178		4,681,437
1932	11,465		4,692,902
1933	7,806	1,663	4,700,708
1934	10,473	2,254	4,711,181
1935	10,330		4,721,511
1936	10,208		4,731,719
1937	10,243		4,741,962
1938	6,769		4,748,731
1939	4,804		4,753,535
1940	825		4,754,360
1941	420		4,754,780
1942			4,754,780
1943			4,754,780
1944			4,754,780
1945			4,754,780
1946			4,754,780
1947			4,754,780
1948			4,754,780
1949			4,754,780
1950			4,754,780
1951			4,754,780
1952			4,754,780
1953			4,754,780
1954			4,754,780
1955			4,754,780
1956			4,754,780
1957			4,754,780
1958			4,754,780
1959			4,754,780
1960			4,754,780
1961			4,754,780
1962			4,754,780
1963			4,754,780
1964			4,754,780
1965			4,754,780
1966			4,754,780
1967			4,754,780
1968			4,754,780
1969			4,754,780
1970			4,754,780
1971			4,754,780
1972			4,754,780
1973			4,754,780
1974			4,754,780

Year	Total	Surface	Accumulative
MEIGS COUNTY			
1806	100		100
1807	100		200
1808	100		300
1809	100		400
1810	100		500
1811	100		600
1812	150		750
1813	150		900
1814	150		1,050
1815	150		1,200
1816	150		1,350
1817	150		1,500
1818	150		1,650
1819	200		1,850
1820	200		2,050
1821	200		2,250
1822	200		2,450
1823	400		2,850
1824	500		3,350
1825	500		3,850
1826	500		4,350
1827	500		4,850
1828	500		5,350
1829	500		5,850
1830	500		6,350
1831	500		6,850
1832	500		7,350
1833	2,000		9,350
1834	6,000		15,350
1835	11,000		26,350
1836	15,000		41,350
1837	20,000		61,350
1838	24,000		85,350
1839	29,000		114,350
1840	33,736		148,086
1841	38,000		186,086
1842	43,000		229,086
1843	48,000		277,086
1844	60,000		337,086
1845	66,000		403,086
1846	73,000		476,086
1847	80,000		556,086
1848	100,000		656,086
1849	144,000		800,086
1850	188,000		988,086
1851	232,000		1,220,086
1852	276,000		1,496,086
1853	320,000		1,816,086
1854	360,000		2,176,086
1855	340,000		2,516,086
1856	320,000		2,836,086
1857	400,000		3,236,086
1858	470,000		3,706,086
1859	540,000		4,246,086
1860	611,718		4,857,804
1861	570,000		5,427,804
1862	550,000		5,977,804
1863	530,000		6,507,804
1864	500,000		7,007,804
1865	380,000		7,387,804
1866	260,139		7,647,943
1867	207,940		7,855,883
1868	353,190		8,209,073
1869	308,000		8,517,073
1870	268,700		8,785,773

Year	Total	Surface	Accumulative
1871	314,000		9,099,773
1872	360,000		9,459,773
1873	390,000		9,849,773
1874	324,405		10,174,178
1875	369,300		10,543,478
1876	393,228		10,936,706
1877	309,402		11,246,108
1878	293,316		11,539,424
1879	284,018		11,823,442
1880	388,786		12,212,228
1881	362,500		12,574,728
1882	450,000		13,024,728
1883	362,557		13,387,285
1884	248,436		13,635,721
1885	234,756		13,870,477
1886	192,263		14,062,740
1887	185,205		14,247,945
1888	242,483		14,490,428
1889	228,156		14,718,584
1890	268,599		14,987,183
1891	299,402		15,286,585
1892	308,127		15,594,712
1893	278,562		15,873,274
1894	219,971		16,093,245
1895	216,897		16,310,415
1896	259,296		16,569,438
1897	203,861		16,773,299
1898	193,355		16,966,654
1899	225,149		17,191,803
1900	249,060		17,440,863
1901	255,892		17,696,755
1902	340,700		18,037,455
1903	388,568		18,426,023
1904	212,395		18,638,418
1905	370,587		19,009,005
1906	530,476		19,539,481
1907	375,033		19,914,514
1908	482,630		20,397,144
1909	543,595		20,940,739
1910	648,149		21,588,888
1911	532,840		22,121,728
1912	635,940		22,757,668
1913	659,019		23,416,687
1914	877,210		23,983,897
1915	954,281		24,938,178
1916	1,025,036		25,963,214
1917	1,267,144		27,230,358
1918	1,373,479		28,603,837
1919	877,516		29,481,353
1920	1,539,162		31,020,515
1921	941,773		31,962,288
1922	736,480		32,698,768
1923	1,234,463		33,933,231
1924	232,792		34,166,023
1925	684,193		34,850,216
1926	920,059		35,770,275
1927	1,083,019		36,853,294
1928	781,616		37,634,910
1929	605,371		38,240,281
1930	404,296		38,644,577
1931	303,949		38,948,526
1932	233,234		39,181,760
1933	256,692		39,438,452
1934	361,753		39,800,205
1935	337,861		40,138,066

Year	Total	Surface	Accumulative
MORGAN COUNTY			
1869	1,000		1,000
1870	3,000		4,000
1871	5,000		9,000
1872	5,431		14,431
1873	5,000		19,431
1874	5,759		25,190
1875	5,600		30,790
1876	5,422		36,212
1877	6,224		42,436
1878	10,059		52,495
1879	10,237		62,732
1880	10,520		73,252
1881	5,200		78,452
1882	5,200		83,652
1883	180		83,832
1884	7,636		91,468
1885	5,536		97,004
1886	4,370		101,374
1887	4,100		105,474
1888			105,474
1889			105,474
1890			105,474
1891			105,474
1892	19,000		124,474
1893	14,500		138,974
1894	13,599		152,573
1895	17,930		170,503
1896	19,080		189,583
1897	22,165		211,748
1898	26,940		238,688
1899	24,881		263,569
1900	29,954		293,523
1901	33,504		327,027
1902	50,437		377,464
1903	82,315		459,779
1904	83,700		543,479
1905	173,551		717,030
1906	222,891		939,921
1907	290,422		1,230,343
1908	217,036		1,447,379
1909	187,241		1,634,620
1910	126,544		1,761,164
1911	175,699		1,936,863
1912	196,622		2,133,485
1913	281,445		2,414,930

Year	Total	Surface	Accumulative
1914	194,743		2,609,673
1915	105,276		2,714,949
1916	258,721		2,973,670
1917	326,008		3,299,678
1918	380,046		3,679,724
1919	208,671		3,888,395
1920	276,852		4,165,247
1921	198,788		4,364,035
1922	168,281		4,532,316
1923	214,975		4,747,291
1924	182,294		4,929,585
1925	278,874		5,208,459
1926	309,455		5,517,914
1927	79,370		5,597,284
1928	43,692		5,640,976
1929	258,574		5,899,550
1930	256,017		6,155,567
1931	316,015		6,471,582
1932	96,153		6,567,735
1933	391,130		6,958,865
1934	376,041		7,334,906
1935	391,410		7,726,316
1936	285,714		8,012,030
1937	201,658		8,213,688
1938	79,916	186	8,293,604
1939	40,294		8,333,898
1940	72,671		8,406,569
1941	196,551		8,603,120
1942	230,750		8,833,870
1943	268,403		9,102,273
1944	301,195		9,403,468
1945	374,929	95,332	9,778,397
1946	300,062	42,412	10,078,459
1947	323,851	35,980	10,402,310
1948	278,383	7,825	10,680,693
1949	159,866	30,604	10,840,559
1950	180,214	143,768	11,020,773
1951	86,046	58,233	11,106,819
1952	33,321	15,253	11,140,140
1953	50,419	16,583	11,190,559
1954	1,022,306	1,010,863	12,212,865
1955	1,650,872	1,288,476	13,863,737
1956	1,777,696	1,473,211	15,641,433
1957	1,919,361	1,740,729	17,560,794
1958	1,983,708	1,969,466	19,544,502
1959	2,371,093	2,363,711	21,915,595
1960	2,244,971	2,243,394	24,160,566
1961	2,301,007	2,300,069	26,461,573
1962	2,223,539	2,222,701	28,685,112
1963	2,475,677	2,474,916	31,160,789
1964	1,870,064	1,869,058	33,030,853
1965	1,801,248	1,800,177	34,832,101
1966	1,380,045	1,379,329	36,212,146
1967	1,020,256	1,019,553	37,232,402
1968	790,741	790,222	38,023,143
1969	825,624	824,921	38,848,767
1970	509,562	509,196	39,358,329
1971	487,321	487,321	39,845,650
1972	732,248	732,248	40,577,898
1973	963,424	963,424	41,541,322
1974	558,164	558,164	42,099,486

Year	Total	Surface	Accumulative
MUSKINGUM COUNTY			
1810	200		200
1811	400		600
1812	400		1,000
1813	600		1,600
1814	800		2,400
1815	1,000		3,400
1816	1,200		4,600
1817	1,400		6,000
1818	1,600		7,600
1819	1,800		9,400
1820	2,000		11,400
1821	2,300		13,700
1822	2,600		16,300
1823	2,900		19,200
1824	3,200		22,400
1825	3,600		26,000
1826	4,000		30,000
1827	4,400		34,400
1828	4,800		39,200
1829	5,200		44,400
1830	5,600		50,000
1831	6,000		56,000
1832	6,400		62,400
1833	6,800		69,200
1834	7,200		76,400
1835	7,500		83,900
1836	7,800		91,700
1837	8,000		99,700
1838	9,500		109,200
1839	11,000		120,200
1840	12,500		132,700
1841	14,000		146,700
1842	15,500		162,200
1843	17,000		179,200
1844	18,500		197,700
1845	20,000		217,700
1846	21,500		239,200
1847	23,000		262,200
1848	24,500		286,700
1849	26,000		312,700
1850	28,000		340,700
1851	30,000		370,700
1852	32,310		403,010
1853	80,000		483,010
1854	80,000		563,010
1855	80,000		643,010
1856	80,000		723,010
1857	80,000		803,010
1858	80,000		883,010
1859	80,000		963,010

MUSKINGUM, NOBLE COUNTIES

Year	Total	Surface	Accumulative
MUSKINGUM (cont.)			
1860	80,000		1,043,010
1861	80,000		1,123,010
1862	80,000		1,203,010
1863	80,000		1,283,010
1864	80,000		1,363,010
1865	78,000		1,441,010
1866	76,189		1,517,199
1867	80,615		1,597,814
1868	77,000		1,674,814
1869	72,000		1,746,814
1870	67,078		1,813,892
1871	55,000		1,868,892
1872	120,000		1,988,892
1873	125,000		2,113,892
1874	126,113		2,240,005
1875	109,480		2,349,485
1876	13,109		2,362,594
1877	77,521		2,440,115
1878	6,743		2,446,858
1879	124,960		2,571,818
1880	150,000		2,721,818
1881	96,000		2,817,818
1882	100,000		2,917,818
1883	96,376		3,014,194
1884	84,398		3,098,592
1885	86,846		3,185,438
1886	96,601		3,282,039
1887	171,928		3,453,967
1888	211,861		3,665,828
1889	233,298		3,899,126
1890	249,666		4,148,792
1891	232,918		4,381,710
1892	264,473		4,646,183
1893	364,067		5,010,250
1894	248,286		5,258,536
1895	255,230		5,513,766
1896	264,105		5,777,871
1897	339,660		6,117,531
1898	250,718		6,368,249
1899	220,854		6,589,103
1900	311,547		6,900,650
1901	226,375		7,127,025
1902	286,532		7,413,557
1903	305,933		7,719,490
1904	300,310		8,019,800
1905	242,011		8,261,811
1906	368,320		8,630,131
1907	442,278		9,072,409
1908	436,947		9,509,356
1909	416,217		9,925,573
1910	270,416		10,195,989
1911	410,777		10,606,766
1912	522,198		11,128,964
1913	495,595		11,624,559
1914	371,273		11,995,832
1915	392,332		12,388,164
1916	396,289		12,784,453
1917	541,261	100	13,325,714
1918	672,321	35,827	13,998,035
1919	399,364	33,411	14,397,399
1920	669,960	133,193	15,067,359
1921	193,920	19,449	15,261,279
1922	434,843	85,929	15,696,122
1923	469,671	74,645	16,165,793
1924	380,788	83,650	16,546,581

Year	Total	Surface	Accumulative
1925	316,029	42,293	16,862,610
1926	230,822		17,093,432
1927	223,462		17,316,894
1928	185,233		17,502,127
1929	202,956	4,295	17,705,083
1930	314,374	92,932	18,019,457
1931	440,807	140,400	18,460,264
1932	390,402	127,850	18,850,666
1933	507,744	141,050	19,358,410
1934	550,580	129,148	19,908,990
1935	609,155	160,313	20,518,145
1936	693,793	160,700	21,211,938
1937	709,803	68,042	21,921,741
1938	974,379	67,280	22,896,120
1939	926,814	93,125	23,822,934
1940	1,063,495	65,766	24,886,429
1941	1,243,806	54,062	26,130,235
1942	1,343,333	38,960	27,473,568
1943	1,606,530	137,770	29,080,098
1944	1,927,063	470,301	31,007,161
1945	1,198,734	523,965	32,205,895
1946	1,113,030	789,725	33,318,925
1947	1,552,642	1,148,108	34,871,567
1948	2,195,125	1,700,703	37,066,692
1949	1,677,453	1,347,323	38,744,145
1950	1,888,432	1,458,657	40,632,577
1951	1,601,592	1,157,679	42,234,169
1952	1,341,989	1,055,163	43,576,158
1953	1,314,039	1,034,601	44,890,197
1954	1,057,053	845,557	45,947,250
1955	1,353,129	1,001,386	47,300,379
1956	1,159,100	883,389	48,459,479
1957	915,358	768,007	49,374,837
1958	721,126	641,684	50,095,963
1959	715,627	625,596	50,811,590
1960	591,635	427,137	51,403,225
1961	107,325	35,371	51,510,550
1962	269,706	195,652	51,780,256
1963	107,718	28,829	51,887,974
1964	117,941	46,254	52,005,915
1965	132,412	65,235	52,138,327
1966	259,405	228,098	52,397,732
1967	699,806	579,081	53,097,538
1968	2,050,799	1,988,140	55,148,337
1969	2,770,617	2,718,018	57,918,954
1970	4,496,252	4,446,261	62,415,206
1971	4,188,367	4,157,903	66,603,573
1972	4,098,678	4,059,275	70,702,251
1973	3,670,776	3,650,080	74,373,027
1974	5,053,499	5,043,559	79,426,526

Year	Total	Surface	Accumulative
NOBLE COUNTY			
1845	1,000		1,000
1846	3,000		4,000
1847	5,000		9,000
1848	7,000		16,000
1849	9,000		25,000
1850	11,000		36,000
1851	14,000		50,000
1852	17,000		67,000
1853	20,000		87,000
1854	20,000		107,000
1855	20,000		127,000
1856	20,000		147,000
1857	20,000		167,000
1858	18,500		185,500
1859	17,000		202,500
1860	15,500		218,000
1861	14,000		232,000
1862	12,500		244,500
1863	11,000		255,500
1864	9,500		265,000
1865	8,000		273,000
1866	6,500		279,500
1867	5,000		284,500
1868	4,000		288,500
1869	3,200		291,700
1870	2,695		294,395
1871	6,700		301,095
1872	12,645		313,740
1873	15,000		328,740
1874	19,737		348,477
1875	4,000		352,477
1876	11,190		363,667
1877	3,280		366,947
1878	6,288		373,235
1879	3,082		376,317
1880	21,520		397,837
1881	7,000		404,837
1882	7,000		411,837
1883	6,800		418,637
1884			418,637
1885			418,637
1886	3,342		421,979
1887	6,320		428,299
1888	6,205		434,504
1889	14,281		448,785
1890	11,565		460,350
1891	9,560		469,910
1892	9,995		479,905
1893	15,360		495,265
1894	21,867		517,132
1895	19,376		536,508
1896	42,507		579,015
1897	63,967		642,982
1898	62,912		705,894
1899	66,714		772,608
1900	89,046		861,654
1901	82,844		944,498
1902	34,992		979,490
1903	52,247		1,031,737
1904	154,970		1,186,707

Year	Total	Surface	Accumulative
NOBLE (cont.)			
1905	171,509		1,358,216
1906	409,114		1,767,330
1907	309,349		2,076,679
1908	208,192		2,284,871
1909	379,055		2,663,926
1910	441,823		3,105,749
1911	480,524		3,586,273
1912	641,677		4,227,950
1913	784,555		5,012,505
1914	507,010		5,519,515
1915	608,735		6,128,250
1916	864,695		6,992,945
1917	918,519		7,911,464
1918	994,989		8,906,453
1919	809,317		9,715,770
1920	638,237		10,354,007
1921	540,694		10,894,701
1922	341,626		11,236,327
1923	707,247		11,943,574
1924	493,301		12,436,875
1925	364,418		12,801,293
1926	431,431		13,232,724
1927	202,678		13,435,402
1928	327,281		13,762,683
1929	600,164		14,362,847
1930	544,405		14,907,252
1931	397,168		15,304,420
1932	429,182		15,733,602
1933	363,027		16,096,629
1934	323,438		16,420,067
1935	187,640		16,607,707
1936	384,023		16,991,730
1937	491,820		17,483,550
1938	139,995		17,623,545
1939	8,402		17,631,947
1940	6,751		17,638,698
1941	7,023		17,645,721
1942	96,557		17,742,278
1943	107,129		17,849,407
1944	14,227	11,857	17,863,634
1945	68,219	65,031	17,931,853
1946	240,785	227,820	18,172,638
1947	475,961	471,307	18,648,500
1948	1,338,666	1,329,894	19,987,265
1949	1,179,026	1,175,178	21,166,291
1950	2,027,850	2,024,724	23,194,141
1951	1,582,240	1,579,820	24,776,381
1952	1,866,647	1,866,203	26,643,028
1953	1,731,875	1,720,651	28,374,903
1954	1,265,081	1,235,742	29,639,984
1955	1,181,207	1,163,589	30,821,191
1956	1,149,672	1,145,952	31,970,863
1957	1,187,093	1,186,217	33,157,956
1958	936,359	936,185	34,094,315
1959	1,592,243	1,592,110	35,686,558
1960	1,955,705	1,955,575	37,642,263
1961	1,490,621	1,490,484	39,132,884
1962	1,680,006	1,679,970	40,812,890
1963	1,803,554	1,803,554	42,616,444
1964	2,679,084	2,678,748	45,295,528
1965	2,978,540	2,978,145	48,274,068
1966	2,187,121	2,187,077	50,461,189
1967	2,068,685	2,068,685	52,529,874
1968	2,379,476	2,379,476	54,909,350
1969	2,756,534	2,756,534	57,665,884

Year	Total	Surface	Accumulative
1970	2,671,647	2,671,647	60,337,531
1971	2,213,266	2,213,266	62,550,797
1972	1,219,135	1,219,135	63,769,932
1973	743,595	743,595	64,513,527
1974	793,542	793,542	65,307,069
PERRY COUNTY			
1816	100		100
1817	200		300
1818	300		600
1819	400		1,000
1820	600		1,600
1821	800		2,400
1822	1,000		3,400
1823	1,200		4,600
1824	1,400		6,000
1825	1,600		7,600
1826	1,700		9,300
1827	1,800		11,100
1828	1,900		13,000
1829	1,900		14,900
1830	2,000		16,900
1831	2,000		18,900
1832	1,900		20,800
1833	1,900		22,700
1834	1,800		24,500
1835	1,800		26,300
1836	1,700		28,000
1837	1,600		29,600
1838	1,500		31,100
1839	1,500		32,600
1840	1,368		33,968
1841	1,400		35,368
1842	1,400		36,768
1843	1,400		38,168
1844	1,400		39,568
1845	1,500		41,068
1846	1,500		42,568
1847	1,600		44,168
1848	1,600		45,768
1849	5,300		51,068
1850	9,000		60,068

Year	Total	Surface	Accumulative
1851	12,700		72,768
1852	16,400		89,168
1853	20,000		109,168
1854	40,000		149,168
1855	30,000		179,168
1856	20,000		199,168
1857	40,000		239,168
1858	42,000		281,168
1859	44,000		325,168
1860	47,000		372,168
1861	50,000		422,168
1862	53,000		475,168
1863	56,000		531,168
1864	59,000		590,168
1865	62,000		652,168
1866	65,000		717,168
1867	68,000		785,168
1868	71,000		856,168
1869	74,000		930,168
1870	77,000		1,007,168
1871	80,556		1,087,724
1872	550,000		1,637,724
1873	525,000		2,162,724
1874	435,017		2,597,741
1875	503,169		3,100,910
1876	504,448		3,605,358
1877	717,761		4,323,119
1878	508,896		4,832,015
1879	615,588		5,447,603
1880	1,445,572		6,893,175
1881	1,735,000		8,628,175
1882	1,913,152		10,541,327
1883	1,735,199		12,176,526
1884	1,379,100		13,655,626
1885	1,259,592		14,915,218
1886	1,607,666		16,522,884
1887	1,870,841		18,393,725
1888	1,736,100		20,129,825
1889	1,549,450		21,679,275
1890	1,714,762		23,394,037
1891	1,759,790		25,153,827
1892	2,056,896		27,210,723
1893	2,171,495		29,382,218
1894	1,460,831		30,843,049
1895	1,789,109		32,632,158
1896	1,703,816		34,335,974
1897	1,449,178		35,785,152
1898	1,789,890		37,575,042
1899	1,748,522		39,323,564
1900	2,517,258		41,840,822
1901	2,563,051		44,403,873
1902	2,830,962		47,234,835
1903	2,731,595		49,966,430
1904	2,491,682		52,458,112
1905	2,399,570		54,857,682
1906	2,609,701		57,467,383
1907	2,921,754		60,389,137
1908	2,108,050		62,497,187
1909	2,076,407		64,573,594
1910	2,394,961		66,968,555
1911	2,021,594		68,990,149
1912	2,164,130		71,154,279
1913	2,217,816		73,372,095
1914	1,349,323		74,721,418
1915	1,172,687		75,894,105
1916	1,195,127		77,089,232
1917	2,445,114	103,090	79,534,346
1918	3,514,841	254,130	83,049,187
1919	2,580,890	263,640	85,630,077
1920	3,700,511	619,542	89,330,588

PERRY, PORTAGE COUNTIES

Year	Total	Surface	Accumulative
PERRY (cont.)			
1921	1,600,510	376,187	90,931,098
1922	1,841,754	293,539	92,772,852
1923	2,520,474	431,803	95,293,326
1924	1,785,700	296,364	97,079,026
1925	1,497,684	38,870	98,576,710
1926	1,706,052	122,040	100,282,762
1927	553,974	13,304	100,836,736
1928	283,430	13,480	101,120,166
1929	558,201	96,147	101,678,367
1930	653,948	10,316	102,332,315
1931	565,422	6,626	102,897,737
1932	327,447		103,225,184
1933	664,630	26,554	103,889,814
1934	893,754	37,930	104,783,568
1935	855,237	13,330	105,638,805
1936	704,843	620	106,343,648
1937	694,033		107,037,681
1938	682,293	12,014	107,719,974
1939	681,918	23,910	108,401,892
1940	751,460	169,248	109,153,352
1941	1,008,361	256,602	110,161,713
1942	963,544	294,031	111,125,257
1943	871,417	269,241	111,996,674
1944	1,107,419	501,434	113,104,093
1945	2,406,047	820,751	115,510,140
1946	2,960,720	872,928	118,470,860
1947	3,410,083	1,444,857	121,880,943
1948	3,397,948	1,815,076	125,278,891
1949	2,657,360	1,636,727	127,936,251
1950	3,261,991	1,685,147	131,198,242
1951	2,750,425	1,692,680	133,948,667
1952	2,376,324	1,496,241	136,324,991
1953	2,048,000	1,269,023	138,372,991
1954	1,762,831	1,317,570	140,135,822
1955	1,605,731	1,340,907	141,741,553
1956	1,676,695	1,417,286	141,909,248
1957	1,755,742	1,553,296	143,664,990
1958	1,849,209	1,736,353	145,514,199
1959	1,905,152	1,860,375	147,419,351
1960	1,569,876	1,537,560	148,989,227
1961	1,684,377	1,656,938	150,673,604
1962	1,932,189	1,850,719	152,605,793
1963	2,031,675	1,796,279	154,637,468
1964	2,196,801	1,875,454	156,834,269
1965	2,092,372	1,720,344	158,926,641
1966	2,126,281	1,636,782	161,052,922
1967	2,155,952	1,358,615	163,208,874
1968	3,101,500	1,371,776	166,310,374
1969	3,303,699	733,152	169,614,073
1970	3,703,297	1,146,763	173,317,370
1971	2,986,057	1,133,002	176,303,427
1972	2,929,946	759,343	179,233,373
1973	2,655,616	513,926	181,888,989
1974	2,138,722	172,153	184,027,711

Year	Total	Surface	Accumulative
PORTAGE COUNTY			
1870	1,500		1,500
1871	11,000		12,500
1872	10,023		22,523
1873	8,864		31,387
1874	1,920		33,307
1875	1,920		35,227
1876	2,940		38,167
1877	4,120		42,287
1878	2,804		45,091
1879	4,200		49,291
1880	26,500		75,791
1881	72,500		148,291
1882	100,000		248,291
1883	72,500		320,791
1884	65,647		386,438
1885	77,071		463,509
1886	70,339		533,848
1887	65,163		599,011
1888	70,923		669,934
1889	65,286		735,220
1890	70,687		805,907
1891	68,612		874,519
1892	87,925		962,444
1893	94,586		1,057,030
1894	92,946		1,149,976
1895	87,012		1,236,988
1896	48,060		1,285,048
1897	79,245		1,364,293
1898	75,851		1,440,144
1899	114,778		1,554,922
1900	103,241		1,658,163
1901	86,781		1,744,944
1902	97,928		1,842,872
1903	101,889		1,944,761
1904	97,692		2,042,453
1905	83,603		2,126,056
1906	109,227		2,235,283
1907	96,463		2,331,746
1908	88,543		2,420,289
1909	102,624		2,522,913
1910	105,155		2,628,068
1911	115,080		2,743,148
1912	83,293		2,826,441
1913	84,289		2,910,730
1914	54,569		2,965,299
1915	60,396		3,025,695
1916	69,432		3,095,127
1917	92,439		3,187,566
1918	88,523		3,276,089
1919	75,310		3,351,399
1920	121,943		3,473,342
1921	67,615		3,540,957
1922	66,012		3,606,969
1923	95,015		3,701,984
1924	83,396		3,785,380

Year	Total	Surface	Accumulative
1925	68,053		3,853,433
1926	62,145		3,915,578
1927	22,443		3,938,021
1928	9,161		3,947,182
1929	7,281		3,954,463
1930	10,251		3,964,714
1931	4,549		3,969,263
1932	11,866		3,981,129
1933	7,159		3,988,288
1934	15,010		4,003,298
1935	17,033		4,020,331
1936	22,498		4,042,829
1937	24,736		4,067,565
1938	23,569	4,120	4,091,134
1939	48,426	33,426	4,139,560
1940	95,613	81,863	4,235,173
1941	74,831	61,061	4,310,004
1942	83,082	71,605	4,393,086
1943	98,366	93,802	4,491,452
1944	94,014	94,014	4,585,466
1945	84,476	84,476	4,669,942
1946	94,100	94,100	4,764,042
1947	94,131	94,131	4,858,173
1948	103,472	103,472	4,961,645
1949	109,417	109,417	5,071,062
1950	153,272	153,272	5,224,334
1951	182,911	182,911	5,407,245
1952	191,991	191,991	5,599,236
1953	142,858	142,858	5,742,094
1954	73,356	73,356	5,815,450
1955	126,503	126,503	5,941,953
1956	135,034	135,034	6,076,987
1957	122,411	122,411	6,199,398
1958	104,515	104,515	6,303,913
1959	108,320	108,320	6,412,233
1960	84,331	84,331	6,496,564
1961	97,622	97,622	6,594,186
1962	94,950	94,950	6,689,136
1963	79,887	79,887	6,769,023
1964	72,502	72,502	6,841,525
1965	6,472	6,472	6,847,997
1966			6,847,997
1967			6,847,997
1968			6,847,997
1969			6,847,997
1970			6,847,997
1971			6,847,997
1972			6,847,997
1973			6,847,997
1974			6,847,997

Year	Total	Surface	Accumulative
SCIOTO COUNTY			
1870	500		500
1871	1,500		2,000
1872	5,000		7,000
1873	3,651		10,651
1874	4,300		14,951
1875	4,900		19,851
1876	5,500		25,351
1877	6,224		31,575
1878	1,892		33,467
1879	1,560		35,027
1880	7,443		42,470
1881	3,400		45,870
1882	3,400		49,270
1883	3,400		52,670
1884	3,650		56,320
1885	2,440		58,760
1886			58,760
1887			58,760
1888			58,760
1889			58,760
1890	1,090		59,850
1891			59,850
1892	1,180		61,030
1893	769		61,799
1894	1,391		63,190
1895	3,875		67,065
1896	1,785		68,850
1897	17,119		85,969
1898	12,140		98,109
1899	8,424		106,533
1900	11,657		118,190
1901	10,349		128,539
1902	8,351		136,890
1903	8,515		145,405
1904	12,224		157,629
1905	9,013		166,642
1906	10,331		176,973
1907	13,508		190,481
1908	8,460		198,941
1909	8,916		207,857
1910	9,834		217,691
1911	5,599		223,290
1912	7,794		231,084
1913	5,867		236,951
1914	4,170		241,121
1915	2,443		243,564
1916	617		244,181
1917	2,608		246,789
1918	1,086		247,875
1919	860		248,735
1920	904		249,639
1921	793		250,432
1922	4,470		254,902
1923	3,265		258,167
1924	1,868		260,035
1925	1,008		261,043
1926	1,063		262,106
1927	1,338		263,444
1928	968		264,412
1929	460		264,872

Year	Total	Surface	Accumulative
1930	3,739		268,611
1931	4,549		273,160
1932	2,287		275,447
1933	4,195		279,642
1934	6,558		286,200
1935	4,725		290,925
1936	3,475		294,400
1937	1,824		296,224
1938	782		297,006
1939	64		297,070
1940	20		297,090
1941	150		297,240
1942	20		297,260
1943	702	139	297,962
1944	76	35	298,038
1945			298,038
1946			298,038
1947			298,038
1948	4,149	4,149	302,187
1949	6,427	6,427	308,614
1950	7,380	7,380	315,994
1951	1,619		317,613
1952			317,613
1953			317,613
1954			317,613
1955			317,613
1956			317,613
1957			317,613
1958			317,613
1959			317,613
1960			317,613
1961			317,613
1962			317,613
1963			317,613
1964			317,613
1965			317,613
1966			317,613
1967			317,613
1968			317,613
1969			317,613
1970			317,613
1971	1,142	1,142	318,755
1972	812	812	319,567
1973			319,567
1974			319,567

Year	Total	Surface	Accumulative
STARK COUNTY			
1833	819		819
1834	1,047		1,866
1835	776		2,642
1836	844		3,486
1837	1,421		4,907
1838	496		5,403
1839	1,100		6,503
1840	1,352		7,855
1841	1,240		9,095
1842	1,640		10,735
1843	1,400		12,135
1844	1,800		13,935
1845	6,000		19,935
1846	5,500		25,435
1847	6,000		31,435
1848	6,059		37,494
1849	6,100		43,594
1850	14,000		57,594
1851	23,000		80,594
1852	31,000		111,594
1853	40,000		151,594
1854	80,000		231,594
1855	80,000		311,594
1856	80,000		391,594
1857	80,000		471,594
1858	18,278		489,872
1859	29,353		519,225
1860	40,000		559,225
1861	61,000		620,225
1862	82,000		702,225
1863	103,000		805,225
1864	124,000		929,225
1865	146,000		1,075,225
1866	168,210		1,243,435
1867	472,844		1,716,279
1868	277,198		1,993,477
1869	200,000		2,193,477
1870	131,257		2,324,734
1871	260,000		2,584,734
1872	410,000		2,994,734
1873	430,106		3,424,837
1874	404,380		3,829,217
1875	408,180		4,237,397
1876	248,440		4,485,837
1877	203,489		4,689,326
1878	336,098		5,025,424
1879	373,574		5,398,998
1880	508,829		5,907,827
1881	359,000		6,266,827
1882	400,000		6,666,827
1883	358,775		7,025,602
1884	513,225		7,538,827
1885	391,418		7,930,245
1886	593,422		8,523,667
1887	784,164		9,307,831
1888	793,227		10,101,058
1889	1,028,649		11,129,707
1890	891,430		12,021,137
1891	925,370		12,946,507
1892	938,519		13,885,026
1893	831,024		14,716,050
1894	456,728		15,172,778
1895	860,733		16,033,511
1896	1,056,979		17,090,490
1897	777,042		17,867,532

STARK, SUMMIT COUNTIES

Year	Total	Surface	Accumulative	Year	Total	Surface	Accumulative	Year	Total	Surface	Accumulative
STARK (cont.)				1963	580,513	580,513	57,795,853	1840	10,162		151,762
1898	867,097		18,734,629	1964	476,127	476,127	58,271,980	1841	15,500		167,262
1899	1,073,750		19,808,379	1965	568,010	568,010	58,839,990	1842	15,000		182,262
1900	1,150,232		20,958,611	1966	501,825	501,825	59,341,815	1843	14,472		196,734
1901	1,049,093		22,007,704	1967	421,910	421,910	59,763,725	1844	17,100		213,834
1902	1,184,749		23,192,453	1968	340,286	340,286	60,104,011	1845	25,000		238,834
1903	926,180		24,118,633	1969	353,357	353,357	60,457,368	1846	22,000		260,834
1904	761,173		24,879,806	1970	344,101	344,101	60,801,469	1847	51,487		312,321
1905	774,832		25,654,638	1971	424,384	424,384	61,225,853	1848	73,495		385,816
1906	772,583		26,427,221	1972	371,490	371,490	61,597,343	1849	75,000		460,816
1907	737,017		27,164,238	1973	331,408	331,408	61,928,751	1850	95,000		555,816
1908	524,052		27,688,290	1974	429,409	429,409	62,358,160	1851	115,000		670,816
1909	458,392		28,146,682					1852	135,000		805,816
1910	547,635		28,694,317					1853	160,000		965,816
1911	442,860		29,137,177					1854	200,000		1,165,816
1912	417,823		29,555,000					1855	218,000		1,383,816
1913	453,772		30,008,772					1856	235,010		1,618,826
1914	469,388		30,478,160					1857	240,000		1,858,826
1915	371,683		30,849,843					1858	218,000		2,076,826
1916	335,487		31,185,330					1859	196,000		2,272,826
1917	471,034	4,802	31,656,364					1860	174,000		2,446,826
1918	535,423	1,136	32,191,787					1861	152,000		2,598,826
1919	325,923	25,205	32,517,710					1862	130,000		2,728,826
1920	498,118	1,150	33,015,828					1863	108,000		2,836,826
1921	310,120	655	33,325,948					1864	86,000		2,922,826
1922	537,116	1,149	33,863,064					1865	64,000		2,986,826
1923	550,496		34,413,560					1866	41,545		3,028,371
1924	462,552	5,337	34,876,112					1867	21,726		3,050,097
1925	472,227	15,637	35,348,339					1868	129,000		3,179,097
1926	410,138	13,202	35,758,477					1869	275,000		3,454,097
1927	476,906	16,427	36,235,383					1870	350,000		3,804,097
1928	388,696	11,267	36,624,079					1871	500,000		4,304,097
1929	363,692	7,043	36,987,771					1872	300,000		4,604,097
1930	322,201	11,288	37,309,972					1873	215,818		4,819,915
1931	317,700	7,331	37,627,672					1874	202,035		5,021,950
1932	318,963	4,919	37,946,635					1875	274,876		5,296,826
1933	318,724	3,538	38,265,359	1810	200		200	1876	171,105		5,467,931
1934	452,372	54,958	38,717,731	1811	200		400	1877	119,586		5,587,517
1935	540,373	117,820	39,258,104	1812	500		900	1878	162,074		5,749,591
1936	605,207	185,266	39,863,311	1813	800		1,700	1879	159,699		5,909,290
1937	537,653	196,338	40,400,964	1814	1,200		2,900	1880	314,606		6,223,896
1938	441,657	238,707	40,842,621	1815	1,500		4,400	1881	170,500		6,394,396
1939	581,771	441,794	41,424,392	1816	1,800		6,200	1882	200,000		6,594,396
1940	608,114	516,473	42,032,506	1817	2,200		8,400	1883	170,500		6,764,896
1941	748,760	690,650	42,781,266	1818	2,500		10,900	1884	253,148		7,018,044
1942	543,143	506,946	43,324,409	1819	2,800		13,700	1885	145,134		7,163,178
1943	425,729	379,563	43,750,138	1820	3,200		16,900	1886	82,225		7,245,403
1944	251,412	213,753	44,001,550	1821	3,500		20,400	1887	95,815		7,341,218
1945	247,900	208,196	44,249,450	1822	3,800		24,200	1888	112,024		7,453,242
1946	249,596	232,730	44,499,046	1823	4,100		28,300	1889	84,438		7,537,680
1947	387,699	377,258	44,886,745	1824	4,400		32,700	1890	189,362		7,727,042
1948	666,582	657,086	45,553,327	1825	4,800		37,500	1891	143,549		7,870,591
1949	796,287	752,771	46,349,614	1826	5,100		42,600	1892	110,299		7,980,890
1950	1,020,379	964,973	47,369,993	1827	5,400		48,000	1893	97,040		8,077,930
1951	954,410	900,591	48,324,403	1828	5,700		53,700	1894	27,322		8,105,252
1952	1,034,069	976,896	49,358,472	1829	6,000		59,700	1895	49,260		8,154,512
1953	974,136	919,806	50,332,608	1830	6,400		66,100	1896	53,666		8,208,178
1954	869,710	796,725	51,202,318	1831	6,800		72,900	1897	83,238		8,291,416
1955	1,082,403	991,492	52,284,721	1832	7,200		80,100	1898	65,378		8,356,794
1956	899,492	807,653	53,184,213	1833	7,600		87,700	1899	86,100		8,442,894
1957	796,066	713,306	53,980,279	1834	8,000		95,700	1900	122,988		8,565,882
1958	616,968	534,759	54,597,247	1835	8,400		104,100	1901	123,541		8,689,423
1959	586,430	550,788	55,183,677	1836	8,800		112,900	1902	93,586		8,783,009
1960	614,977	614,977	55,798,654	1837	9,200		122,100	1903	44,329		8,827,338
1961	760,110	760,110	56,558,764	1838	9,600		131,700	1904	84,208		9,027,075
1962	656,576	656,576	57,215,340	1839	9,900		141,600				
				SUMMIT COUNTY							
				1810	200		200	1875	274,876		5,296,826
				1811	200		400	1876	171,105		5,467,931
				1812	500		900	1877	119,586		5,587,517
				1813	800		1,700	1878	162,074		5,749,591
				1814	1,200		2,900	1879	159,699		5,909,290
				1815	1,500		4,400	1880	314,606		6,223,896
				1816	1,800		6,200	1881	170,500		6,394,396
				1817	2,200		8,400	1882	200,000		6,594,396
				1818	2,500		10,900	1883	170,500		6,764,896
				1819	2,800		13,700	1884	253,148		7,018,044
				1820	3,200		16,900	1885	145,134		7,163,178
				1821	3,500		20,400	1886	82,225		7,245,403
				1822	3,800		24,200	1887	95,815		7,341,218
				1823	4,100		28,300	1888	112,024		7,453,242
				1824	4,400		32,700	1889	84,438		7,537,680
				1825	4,800		37,500	1890	189,362		7,727,042
				1826	5,100		42,600	1891	143,549		7,870,591
				1827	5,400		48,000	1892	110,299		7,980,890
				1828	5,700		53,700	1893	97,040		8,077,930
				1829	6,000		59,700	1894	27,322		8,105,252
				1830	6,400		66,100	1895	49,260		8,154,512
				1831	6,800		72,900	1896	53,666		8,208,178
				1832	7,200		80,100	1897	83,238		8,291,416
				1833	7,600		87,700	1898	65,378		8,356,794
				1834	8,000		95,700	1899	86,100		8,442,894
				1835	8,400		104,100	1900	122,988		8,565,882
				1836	8,800		112,900	1901	123,541		8,689,423
				1837	9,200		122,100	1902	93,586		8,783,009
				1838	9,600		131,700	1903	44,329		8,827,338
				1839	9,900		141,600	1904	84,208		9,027,075

Year	Total	Surface	Accumulative
SUMMIT (cont.)			
1905	115,529		9,027,075
1906	96,997		9,124,072
1907	99,971		9,224,043
1908	103,299		9,327,342
1909	78,268		9,405,610
1910	94,346		9,499,956
1911	85,711		9,585,667
1912	82,032		9,667,699
1913	82,331		9,750,030
1914	58,287		9,808,317
1915	51,432		9,859,749
1916	38,260		9,898,009
1917	29,680		9,927,689
1918	55,676		9,983,365
1919	37,397		10,020,762
1920	17,744		10,038,506
1921	12,632		10,051,138
1922	32,589		10,093,727
1923	27,399		10,111,126
1924	14,694		10,125,820
1925	15,864		10,141,684
1926	5,567		10,147,251
1927	5,007		10,152,258
1928	5,852		10,158,110
1929	3,314		10,161,424
1930	3,739		10,165,163
1931	4,549		10,169,712
1932	18,459		10,188,171
1933	22,962		10,211,133
1934	30,050		10,241,183
1935	32,457		10,273,640
1936	25,459		10,299,099
1937	24,201		10,323,300
1938	10,668		10,333,968
1939	6,753		10,340,464
1940	5,753		10,346,217
1941			10,346,217
1942			10,346,217
1943			10,346,217
1944			10,346,217
1945			10,346,217
1946			10,346,217
1947			10,346,217
1948			10,346,217
1949			10,346,217
1950			10,346,217
1951			10,346,217
1952			10,346,217
1953			10,346,217
1954			10,346,217
1955			10,346,217
1956			10,346,217
1957			10,346,217
1958			10,346,217
1959			10,346,217
1960			10,346,217
1961			10,346,217
1962			10,346,217
1963			10,346,217
1964			10,346,217
1965			10,346,217
1966			10,346,217
1967			10,346,217
1968			10,346,217
1969	15,500	15,500	10,361,717

Year	Total	Surface	Accumulative
1970	1,413	1,413	10,363,130
1971			10,363,130
1972			10,363,130
1973			10,363,130
1974			10,363,130
TRUMBULL COUNTY			
1835	100		100
1836	200		300
1837	300		600
1838	400		1,000
1839	500		1,500
1840	600		2,100
1841	700		2,800
1842	800		3,600
1843	1,000		4,600
1844	1,000		5,600
1845	5,000		10,600
1846	4,500		15,100
1847	5,000		20,100
1848	6,000		26,100
1849	7,000		33,100
1850	11,000		44,100
1851	15,000		59,100
1852	19,000		78,100
1853	24,000		102,100
1854	80,000		182,100
1855	140,000		322,100
1856	160,000		482,100
1857	172,000		654,100
1858	132,000		786,100
1859	90,000		876,100
1860	42,846		918,946
1861	80,000		998,946
1862	120,000		1,118,946
1863	160,000		1,278,946
1864	200,000		1,478,946
1865	240,000		1,718,946
1866	285,618		2,004,564
1867	153,604		2,158,168
1868	365,608		2,523,776
1869	400,000		2,923,776
1870	628,279		3,552,055
1871	370,000		3,922,055
1872	675,000		4,597,055
1873	700,000		5,297,055
1874	639,434		5,936,489

Year	Total	Surface	Accumulative
1875	749,059		6,685,548
1876	320,000		7,005,548
1877	541,626		7,547,174
1878	452,699		7,999,873
1879	1,064,737		9,064,610
1880	902,920		9,967,530
1881	457,600		10,425,130
1882	500,000		10,925,130
1883	457,612		11,382,742
1884	257,683		11,640,425
1885	264,517		11,904,942
1886	188,531		12,093,473
1887	167,989		12,261,462
1888	157,826		12,419,288
1889	106,480		12,525,768
1890	105,333		12,631,101
1891	64,173		12,695,274
1892	55,775		12,751,049
1893	23,152		12,774,201
1894	33,137		12,807,338
1895	29,809		12,837,147
1896	7,172		12,844,319
1897	10,838		12,855,157
1898	7,471		12,862,628
1899	11,059		12,873,687
1900	19,181		12,892,868
1901	12,148		12,905,016
1902	8,143		12,913,159
1903	8,476		12,921,635
1904	6,635		12,928,270
1905	3,591		12,931,861
1906	1,956		12,933,817
1907	1,895		12,935,712
1908	7,534		12,943,246
1909	5,405		12,948,651
1910	4,716		12,953,367
1911	3,496		12,956,863
1912	2,989		12,959,852
1913	2,185		12,962,037
1914	1,113		12,963,150
1915	1,182		12,964,332
1916	1,116		12,965,448
1917	1,266		12,966,714
1918	1,750		12,968,464
1919	1,347		12,969,811
1920	2,614		12,972,425
1921	813		12,973,238
1922	1,324		12,974,562
1923	1,039		12,975,601
1924			12,975,601
1925			12,975,601
1926			12,975,601
1927			12,975,601
1928			12,975,601
1929			12,975,601
1930			12,975,601
1931	4,550		12,980,151
1932	2,287		12,982,438
1933	7,160		12,989,598
1934			12,989,598
1935			12,989,598
1936			12,989,598
1937			12,989,598
1938			12,989,598
1939	450		12,990,048

TRUMBULL, TUSCARAWAS COUNTIES

Year	Total	Surface	Accumulative	Year	Total	Surface	Accumulative	Year	Total	Surface	Accumulative
TRUMBULL (cont.)											
1940	251		12,990,299	1815	100		500	1880	276,223		2,423,945
1941			12,990,299	1816	150		650	1881	364,000		2,787,945
1942	56		12,990,355	1817	150		800	1882	450,000		3,237,945
1943			12,990,355	1818	150		950	1883	364,066		3,602,011
1944			12,990,355	1819	150		1,100	1884	317,141		3,919,152
1945			12,990,355	1820	200		1,300	1885	267,666		4,472,363
1946			12,990,355	1821	500		1,800	1886	267,666		4,472,363
1947			12,990,355	1822	800		2,600	1887	506,466		4,978,829
1948			12,990,355	1823	1,100		3,700	1888	546,117		5,524,946
1949			12,990,355	1824	1,500		5,200	1889	643,866		6,168,812
1950			12,990,355	1825	1,800		7,000	1890	565,105		6,733,917
1951			12,990,355	1826	2,200		9,200	1891	733,374		7,467,291
1952			12,990,355	1827	2,500		11,700	1892	887,106		8,354,397
1953			12,990,355	1828	2,800		14,500	1893	794,681		9,149,078
1954			12,990,355	1829	3,200		17,700	1894	651,903		9,800,981
1955			12,990,355	1830	3,600		21,300	1895	753,286		10,554,267
1956			12,990,355	1831	3,900		25,200	1896	613,563		11,167,830
1957			12,990,355	1832	4,200		29,400	1897	730,473		11,898,303
1958			12,990,355	1833	4,600		34,000	1899	1,053,238		13,902,454
1959			12,990,355	1834	5,000		39,000	1900	1,267,185		15,169,639
1960			12,990,355	1835	5,400		44,400	1900	1,267,185		15,169,639
1961			12,990,355	1836	5,800		50,200	1901	1,324,570		16,494,209
1962			12,990,355	1837	6,300		56,500	1902	1,577,654		18,071,863
1963			12,990,355	1838	6,928		63,428	1903	1,328,951		19,400,814
1964			12,990,355	1839	9,000		72,428	1904	1,296,876		20,697,690
1965			12,990,355	1840	11,689		84,117	1905	1,361,394		22,059,084
1966			12,990,355	1841	12,000		96,117	1906	1,429,565		23,488,649
1967			12,990,355	1842	13,000		109,117	1907	1,776,566		25,265,215
1968			12,990,355	1844	13,000		136,117	1908	1,331,248		26,596,463
1969			12,990,355	1845	12,000		148,117	1909	1,513,900		28,110,363
1970			12,990,355	1845	12,000		148,117	1910	811,782		28,922,145
1971			12,990,355	1846	11,000		159,117	1911	670,251		29,592,396
1972			12,990,355	1847	11,000		170,177	1912	1,311,301		30,903,697
1973			12,990,355	1848	11,401		181,518	1913	1,387,026		32,290,723
1974			12,990,355	1849	12,000		193,518	1914	906,459		33,197,182
				1850	14,000		207,518	1915	1,400,163	23,449	34,597,345
				1851	16,000		223,518	1916	1,547,110	36,830	36,144,455
				1852	18,000		241,518	1917	1,788,800	44,338	37,933,255
				1853	20,000		261,518	1918	2,120,827	24,360	40,054,092
				1854	40,000		301,518	1919	1,595,620	148,950	41,649,712
				1855	50,000		351,518	1920	2,231,345	353,212	43,881,057
				1856	61,000		412,518	1921	1,207,139	52,101	45,088,196
				1857	71,836		484,354	1922	1,388,546	204,057	46,476,742
				1858	51,000		535,354	1923	1,345,540	85,403	47,822,282
				1859	30,000		565,354	1924	1,073,558	39,232	48,895,840
				1860	9,707		575,061	1925	1,084,820	35,653	49,980,660
				1861	15,000		590,061	1926	1,153,600	15,479	51,134,260
				1862	21,000		611,061	1927	996,621	16,909	52,130,881
				1863	26,000		637,061	1928	961,740	24,231	53,092,621
				1864	32,000		669,061	1929	1,002,074	25,658	54,094,695
				1865	37,000		706,061	1930	675,093	28,063	54,769,788
				1866	43,445		749,506	1931	703,245	28,774	55,473,033
				1867	25,638		775,144	1932	768,369	9,528	56,241,402
				1868	51,570		826,714	1933	965,990	12,822	57,207,392
				1869	81,000		907,714	1934	898,244	12,923	58,105,636
				1870	110,435		1,018,149	1935	1,145,265	17,070	59,250,901
				1871	83,000		1,101,149	1936	1,219,548	31,847	60,470,449
				1872	100,000		1,201,149	1937	1,195,264	72,855	61,665,713
				1873	100,000		1,301,149	1938	669,651	104,484	62,335,364
				1874	111,164		1,412,313	1939	952,340	290,618	63,287,704
TUSCARAWAS COUNTY											
1810	50		50	1875	107,000		1,519,313	1940	1,184,404	474,561	64,472,108
1811	50		100	1876	82,909		1,602,222	1941	1,500,082	690,994	65,972,190
1812	100		200	1877	112,523		1,714,745	1942	1,606,156	764,546	67,578,346
1813	100		300	1878	177,482		1,892,227	1943	1,456,231	652,283	69,034,577
1814	100		400	1879	255,495		2,147,722	1944	1,571,811	786,846	70,606,388

Year	Total	Surface	Accumulative
TUSCARAWAS (cont.)			
1945	1,716,440	920,613	72,322,828
1946	1,627,366	864,607	73,950,194
1947	2,017,055	1,017,706	75,967,249
1948	1,775,234	775,212	77,742,483
1949	1,607,547	853,010	79,350,030
1950	2,274,528	1,265,798	81,624,558
1951	2,456,750	1,278,455	84,081,308
1952	2,264,075	1,262,136	86,345,383
1953	2,267,184	1,352,844	88,612,567
1954	2,269,927	1,327,608	90,882,494
1955	2,129,467	1,222,341	93,011,961
1956	2,248,258	1,443,437	95,260,419
1957	2,588,404	1,781,535	97,848,823
1958	2,429,726	1,781,010	100,278,549
1959	2,492,110	1,841,006	102,770,659
1960	2,436,397	1,872,006	105,207,056
1961	2,243,528	1,681,585	107,450,584
1962	2,446,209	1,857,486	109,896,793
1963	2,396,433	2,037,096	112,293,226
1964	2,506,713	2,152,621	114,799,939
1965	2,960,135	2,386,047	117,760,074
1966	3,171,612	2,545,279	120,931,686
1967	2,923,797	2,401,560	123,855,483
1968	2,522,563	2,184,878	126,378,046
1969	2,502,774	2,241,680	128,880,820
1970	2,187,629	1,865,145	131,068,449
1971	2,476,794	2,245,342	133,545,243
1972	1,996,693	1,927,142	135,541,936
1973	1,499,501	1,499,501	137,041,437
1974	1,454,461	1,454,461	138,495,898
VINTON COUNTY			
1851	2,000		2,000
1852	6,000		8,000
1853	12,000		20,000
1854	60,000		80,000
1855	56,000		136,000
1856	52,000		188,000
1857	48,000		236,000
1858	47,700		283,700
1859	47,400		331,100
1860	47,100		378,200

Year	Total	Surface	Accumulative
1861	46,800		425,000
1862	46,500		471,500
1863	46,200		517,700
1864	45,900		563,600
1865	45,600		609,200
1866	45,300		654,500
1867	45,000		699,500
1868	44,700		744,200
1869	44,400		788,600
1870	44,100		832,700
1871	43,500		876,200
1872	43,026		919,226
1873	50,827		970,053
1874	45,728		1,015,781
1875	36,356		1,052,137
1876	48,580		1,100,717
1877	35,766		1,136,483
1878	47,436		1,183,919
1879	48,684		1,232,603
1880	61,908		1,294,511
1881	59,800		1,354,311
1882	60,000		1,414,311
1883	55,862		1,470,173
1884	69,740		1,539,913
1885	77,127		1,617,040
1886	60,013		1,677,053
1887	89,727		1,766,780
1888	108,695		1,875,475
1889	98,749		1,974,224
1890	86,611		2,060,835
1891	104,366		2,165,201
1892	88,305		2,253,506
1893	76,144		2,329,650
1894	62,496		2,392,146
1895	61,068		2,453,214
1896	46,503		2,499,717
1897	75,445		2,575,162
1898	85,144		2,660,306
1899	71,072		2,731,378
1900	77,231		2,808,609
1901	88,024		2,896,633
1902	110,423		3,007,056
1903	154,934		3,161,990
1904	240,524		3,402,514
1905	224,275		3,626,789
1906	226,904		3,853,693
1907	249,475		4,103,168
1908	183,542		4,286,710
1909	128,928		4,415,638
1910	159,006		4,574,644
1911	129,986		4,704,630
1912	100,084		4,804,714
1913	118,007		4,922,721
1914	72,432		4,995,153
1915	105,806		5,100,959
1916	106,376		5,207,335
1917	212,940		5,420,275
1918	377,892		5,798,167
1919	166,881		5,965,048
1920	340,866	10,200	6,305,914
1921	95,118		6,401,032
1922	130,058		6,531,090
1923	111,181		6,642,271
1924	86,043		6,728,314
1925	71,019		6,799,333
1926	71,943		6,871,276
1927	78,576	130	6,949,852
1928	88,376		7,038,228
1929	61,059		7,099,287
1930	33,597		7,132,884

Year	Total	Surface	Accumulative
1931	78,202		7,211,086
1932	23,415		7,234,501
1933	35,675	1,686	7,270,176
1934	123,130	86,720	7,393,306
1935	91,854	59,348	7,485,160
1936	94,358	54,364	7,579,518
1937	87,962	51,774	7,667,480
1938	67,166	33,272	7,734,646
1939	122,175	75,750	7,856,821
1940	104,677	52,890	7,961,498
1941	109,261	61,071	8,070,759
1942	74,216	38,980	8,144,975
1943	87,189	48,662	8,232,164
1944	134,438	84,737	8,366,602
1945	124,830	77,280	8,491,422
1946	180,698	138,243	8,672,120
1947	430,600	351,637	9,102,720
1948	351,411	263,935	9,454,131
1949	442,874	380,321	9,897,005
1950	397,213	313,229	10,294,218
1951	264,696	218,170	10,558,914
1952	220,704	172,335	10,779,618
1953	195,682	163,419	10,975,300
1954	171,555	131,181	11,146,855
1955	195,023	136,456	11,341,878
1956	168,269	110,081	11,510,147
1957	167,165	110,068	11,677,312
1958	204,735	144,697	11,882,047
1959	274,381	201,725	12,156,428
1960	254,532	203,956	12,410,960
1961	151,051	108,399	12,562,011
1962	107,045	58,718	12,669,056
1963	52,473	25,194	12,721,529
1964	160,787	134,600	12,882,316
1965	140,853	123,180	13,023,169
1966	155,414	140,493	13,178,583
1967	227,130	221,936	13,405,713
1968	226,826	221,614	13,632,539
1969	286,777	285,342	13,919,316
1970	605,640	605,570	14,524,956
1971	715,867	715,867	15,240,823
1972	581,488	581,488	15,822,311
1973	573,959	573,959	16,396,270
1974	1,124,757	1,046,927	17,521,027

WASHINGTON, WAYNE COUNTIES

Year	Total	Surface	Accumulative	Year	Total	Surface	Accumulative	Year	Total	Surface	Accumulative
WASHINGTON COUNTY								WAYNE COUNTY			
1867	2,000		2,000	1932	529		363,953	1840	400		400
1868	4,000		6,000	1933	6,388		370,341	1841	400		800
1869	6,000		12,000	1934	6,033		376,374	1842	400		1,200
1870	9,000		21,000	1935	17,680		394,054	1843	400		1,600
1871	12,000		33,000	1936	6,825	128	400,879	1844	400		2,000
1872	13,057		46,057	1937	2,556		403,435	1845	400		2,400
1873	13,384		59,441	1938	12,645		416,080	1846	400		2,800
1874	6,662		66,103	1939	6,972		423,052	1847	400		3,200
1875	12,425		78,528	1940	1,986		425,038	1848	400		3,600
1876	7,122		85,650	1941	7,618		432,656	1849	7,000		10,600
1877	8,181		93,831	1942	9,003		441,659	1850	15,000		25,600
1878	8,649		102,480	1943	1,824		443,483	1851	23,000		48,600
1879	26,600		129,080	1944	785		444,268	1852	31,000		79,600
1880	31,450		160,530	1945	1,293		445,561	1853	40,000		119,600
1881	10,000		170,530	1946	357		445,918	1854	60,000		179,600
1882	15,000		185,530	1947	686		446,604	1855	60,000		239,600
1883	7,380		192,910	1948	190,587	190,527	637,191	1856	60,000		299,600
1884	5,600		198,510	1949	168,704	168,704	805,895	1857	60,000		359,600
1885	5,000		203,510	1950	136,533	135,801	942,428	1858	59,000		418,600
1886	5,500		209,010	1951	106,896	106,563	1,049,324	1859	59,000		477,600
1887	1,880		210,890	1952	167,797	167,797	1,217,121	1860	59,000		536,600
1888	2,432		213,322	1953	138,492	138,492	1,355,613	1861	59,000		595,600
1889	2,770		216,092	1954	67,217	67,217	1,422,830	1862	58,000		653,600
1890	3,835		219,927	1955	151,053	151,009	1,573,883	1863	58,000		711,600
1891	3,796		223,723	1956	243,746	243,746	1,817,629	1864	58,000		769,600
1892	3,480		227,203	1957	250,055	250,055	2,067,684	1865	58,000		827,600
1893	1,936		229,139	1958	160,126	160,049	2,227,810	1866	57,088		884,688
1894	2,000		231,139	1959	138,984	138,927	2,366,794	1867	34,371		919,059
1895	4,533		235,672	1960	95,126	95,126	2,461,920	1868	46,423		965,482
1896	3,646		239,318	1961	73,961	73,961	2,535,881	1869	34,000		999,482
1897	2,974		242,292	1962	37,385	37,385	2,573,266	1870	21,650		1,021,132
1898	3,634		245,926	1963	6,030	6,030	2,579,296	1871	46,000		1,067,132
1899	2,099		248,025	1964	2,769	2,769	2,582,065	1872	80,000		1,147,132
1900	2,679		250,704	1965	116,695	116,695	2,698,760	1873	150,000		1,297,132
1901	1,738		252,442	1966	199,970	199,970	2,898,730	1874	159,136		1,456,268
1902	3,930		256,372	1967	177,396	177,396	3,076,126	1875	80,291		1,536,559
1903	4,000		260,372	1968	106,586	106,586	3,182,712	1876	58,340		1,594,899
1904	3,800		264,172	1969	117,274	117,274	3,299,986	1877	73,096		1,667,995
1905	3,600		267,772	1970	35,423	35,423	3,335,409	1878	118,369		1,786,364
1906	1,929		269,701	1971	227,569	227,569	3,562,978	1879	108,677		1,895,041
1907	691		270,392	1972	205,734	205,734	3,768,712	1880	127,707		2,022,748
1908	1,304		271,696	1973			3,768,712	1881	148,800		2,171,548
1909	1,232		272,928	1974			3,768,712	1882	200,000		2,371,548
1910			272,928					1883	148,847		2,520,395
1911	355		273,283					1884	120,571		2,640,966
1912	523		273,806					1885	81,507		2,722,473
1913	615		274,421					1886	109,057		2,831,530
1914	615		275,036					1887	105,150		2,936,680
1915	653		275,689					1888	91,157		3,027,837
1916	421		276,110					1889	86,549		3,114,386
1917	1,137		277,247					1890	71,431		3,185,817
1918	2,498		279,745					1891	91,553		3,277,370
1919	4,543		284,288					1892	80,188		3,357,558
1920	16,687		300,975					1893	64,934		3,422,492
1921	5,719		306,694					1894	32,142		3,454,634
1922	8,276		314,970					1895	119,015		3,573,649
1923	3,903		318,873					1896	69,058		3,642,707
1924	1,619		320,492					1897	84,052		3,726,759
1925	2,056		322,548					1898	41,598		3,768,357
1926	3,844		326,392					1899	18,557		3,786,914
1927	21,310		347,702					1900	45,566		3,832,480
1928	1,112		348,814					1901	31,530		3,864,010
1929	4,117		352,931					1902	94,015		3,958,025
1930	6,213		359,144					1903	97,952		4,055,977
1931	4,280		363,424					1904	123,520		4,179,497

Year	Total	Surface	Accumulative
WAYNE (cont.)			
1905	165,224		4,344,721
1906	204,573		4,549,294
1907	204,773		4,754,067
1908	125,525		4,879,592
1909	86,987		4,966,579
1910	164,724		5,131,303
1911	202,329		5,333,632
1912	184,381		5,518,013
1913	93,575		5,611,588
1914	90,375		5,701,963
1915	70,754		5,772,717
1916	84,996		5,857,713
1917	65,762		5,923,475
1918	33,410		5,956,885
1919	62,580		6,019,465
1920	70,837		6,090,302
1921	18,687		6,108,989
1922	28,413		6,137,402
1923	6,781		6,144,183
1924	7,289	1,488	6,151,472
1925	3,021		6,154,493
1926	639		6,155,132
1927	924		6,156,056
1928	901		6,156,957
1929	7,429		6,164,386
1930	6,213		6,170,599
1931	4,280		6,174,879
1932	11,821		6,186,700
1933	21,592		6,208,292
1934	8,612		6,216,904
1935	8,809	3,373	6,225,713
1936	8,377	3,451	6,234,090
1937	15,938	2,187	6,250,028
1938	20,514		6,270,542
1939	18,810		6,289,352
1940	20,773	4,535	6,310,125
1941	24,721	18,582	6,334,846
1942	20,125	20,125	6,354,971
1943	10,682	10,682	6,365,653
1944			6,365,653
1945	18,517	18,517	6,384,170
1946	39,740	39,740	6,423,910
1947	89,156	89,156	6,513,066
1948	108,955	108,955	6,622,021
1949	128,875	128,875	6,750,878
1950	119,483	119,483	6,870,361
1951	104,949	104,949	6,975,310
1952	101,098	101,098	7,076,408
1953	117,035	117,035	7,193,443
1954	113,164	105,779	7,306,607
1955	108,741	103,043	7,415,348
1956	121,919	121,919	7,537,267
1957	109,259	109,259	7,646,526
1958	90,723	90,723	7,737,249
1959	86,897	86,897	7,824,146
1960	58,995	58,995	7,883,141
1961	75,479	75,479	7,958,620
1962	52,605	52,605	8,011,225
1963	81,951	81,951	8,093,176
1964	52,062	52,062	8,145,238
1965	45,250	45,250	8,190,488
1966	24,480	24,480	8,214,968
1967	17,348	17,348	8,232,316
1968	27,902	27,902	8,260,218
1969	31,362	31,362	8,291,580

Year	Total	Surface	Accumulative
1970	38,484	38,484	8,330,064
1971	30,317	30,317	8,360,381
1972	31,149	31,149	8,391,530
1973	46,326	46,326	8,437,856
1974	54,645	54,645	8,492,501