



# Aquatic Macroinvertebrate IDENTIFICATION

## GROUP ONE-Sensitive to Pollutants

CADDISFLY  
LARVA



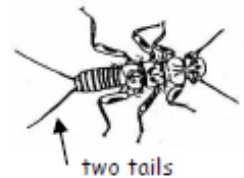
*Abundance indicates good water quality*

GILLED  
SNAIL

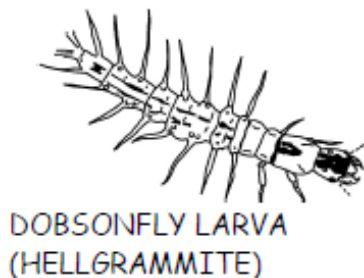


WATER PENNY  
BEETLE LARVA

STONEFLY NYMPH



two tails

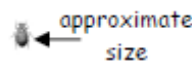


DOBSONFLY LARVA  
(HELLGRAMMITE)



RIFFLE  
BEETLE

enlarged



approximate  
size



three  
tails

MAYFLY  
NYMPH



three  
tails

## GROUP TWO-Somewhat Sensitive to Pollutants

*Capable of surviving in a wide range of water conditions*



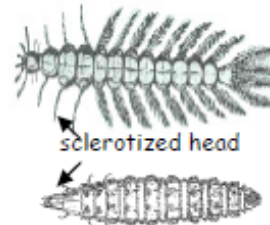
SOWBUG



CLAM



CRAYFISH



sclerotized head

BEETLE LARVA



CRANEFLY LARVA



DRAGONFLY  
NYMPH

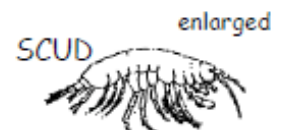
internal gills



three  
external  
gills



DAMSELFLY  
NYMPH



SCUD

enlarged



approximate  
size

## GROUP THREE-Very Tolerant to Pollutants

*Abundance indicates poor water quality*



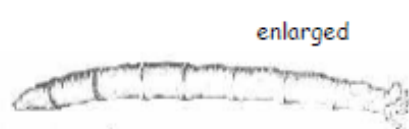
LEECH



enlarged

bulbous end

BLACKFLY  
LARVA

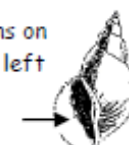


enlarged



MIDGE LARVA

Opens on  
your left  
side



POUCH  
SNAIL



AQUATIC  
WORM