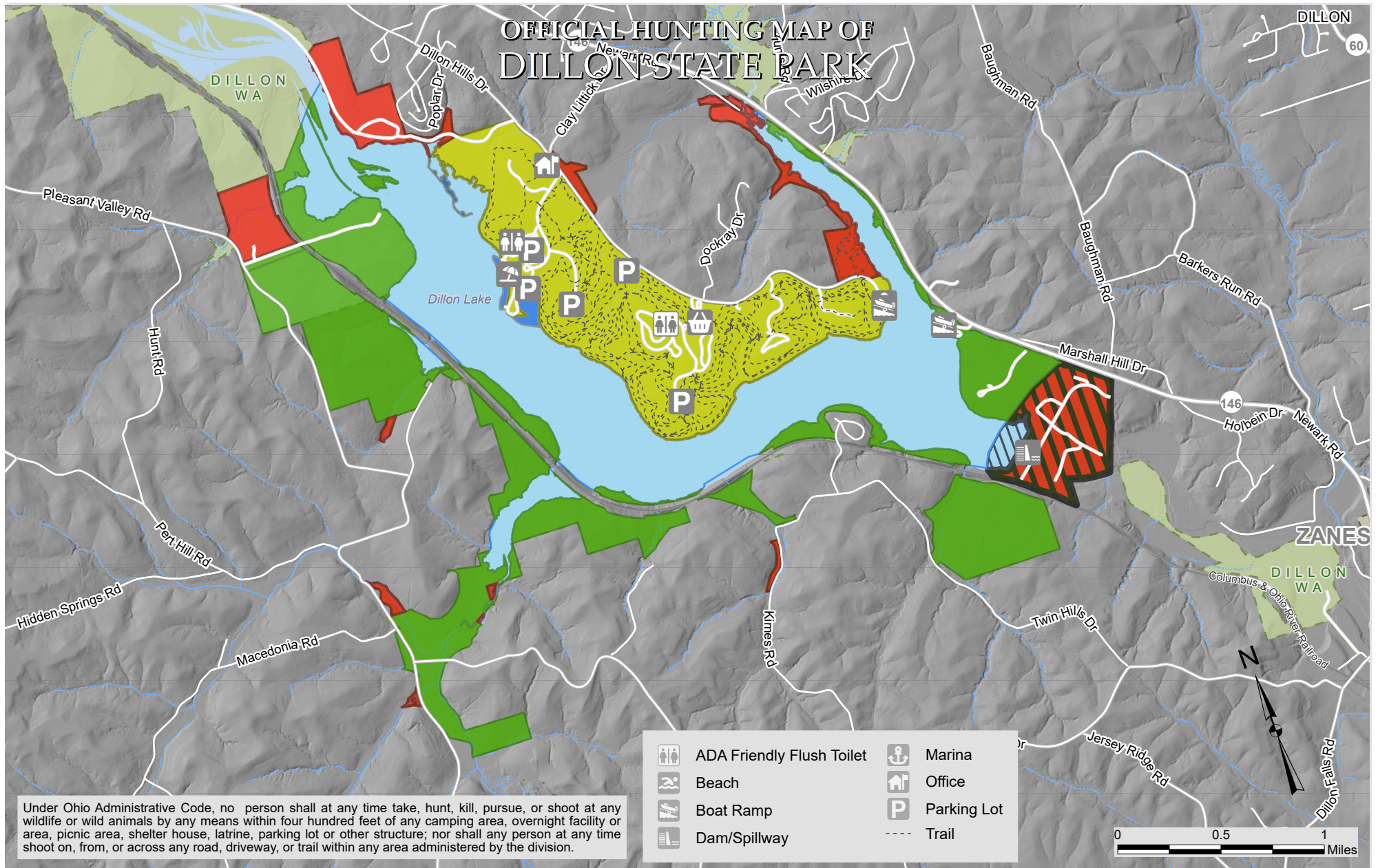


# OFFICIAL HUNTING MAP OF DILLON STATE PARK



- Green: Open to Hunting, Trapping During Season
- Light Blue: Open to Waterfowl Only<sup>†</sup>
- Blue: Waterfowl and early goose\*
- Yellow: Special Deer Management Area, Youth Hunting by Permit Only
- Red: Closed to Hunting
- Dark Grey: Closed to Hunting (USACE Managed Property)
- Light Grey: Closed to Waterfowl Hunting (USACE Managed Property)

<sup>†</sup>Open to waterfowl from boat or shoreline.  
\*Waterfowl and early goose only in Cove and at Beach until 10am.

**OFFICIAL HUNTING MAP** – for hunting and/or trapping of game birds, Game quadrupeds and furbearing animals (Further subject to Wildlife Orders then in effect.)

*Dillon Colby*  
Chief, Division of Parks and Watercraft

**EFFECTIVE DATE:** 10/30/2025 **DATE POSTED:** 9/30/2025

THIS HUNTING MAP IS SUBJECT TO CHANGE. THE CURRENT OFFICIAL HUNTING MAP WILL BE POSTED AT THE PARK OFFICE AT LEAST 30 DAYS IN ADVANCE OF THE EFFECTIVE DATE OF ANY CHANGES.

**DISCLAIMER**  
This product of the Ohio Department of Natural Resources is intended to provide general information only and should not be used for any other purposes. It is not intended for resale or to replace site-specific investigations. These data were compiled by the Ohio Department of Natural Resources, which reserves the publication rights to this material. If these data are used in the compilation of other data sets or maps for distribution or publication, this source must be referenced.

