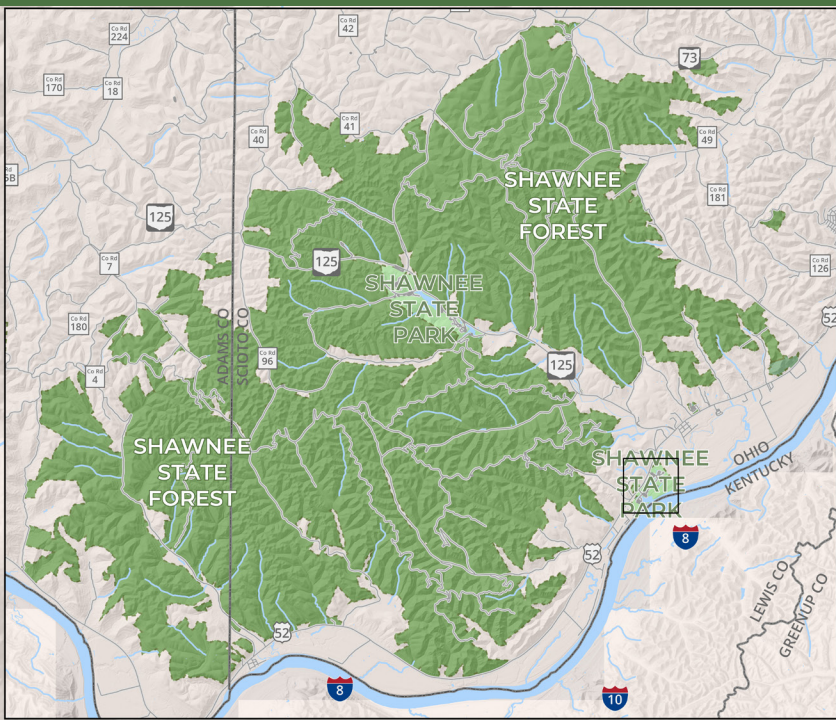


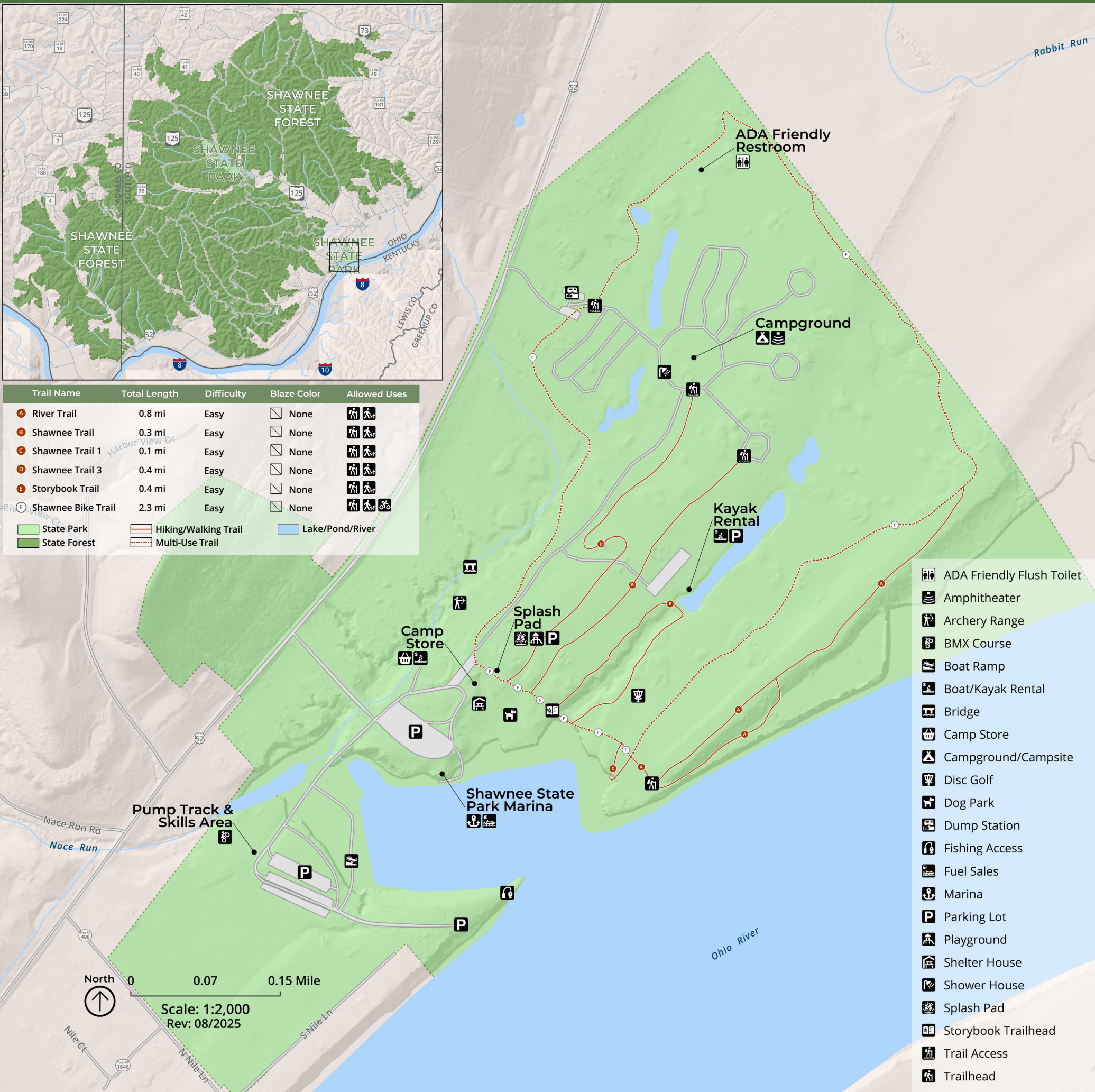
# SHAWNEE SOUTH PARK MAP



Trail Name	Total Length	Difficulty	Blaze Color	Allowed Uses
A River Trail	0.8 mi	Easy	None	Hiking, Walking, Bicycling
B Shawnee Trail	0.3 mi	Easy	None	Hiking, Walking, Bicycling
C Shawnee Trail 1	0.1 mi	Easy	None	Hiking, Walking, Bicycling
D Shawnee Trail 3	0.4 mi	Easy	None	Hiking, Walking, Bicycling
E Storybook Trail	0.4 mi	Easy	None	Hiking, Walking, Bicycling
F Shawnee Bike Trail	2.3 mi	Easy	None	Hiking, Walking, Bicycling

State Park	Hiking/Walking Trail	Lake/Pond/River
State Forest	Multi-Use Trail	



- ADA Friendly Flush Toilet
- Amphitheater
- Archery Range
- BMX Course
- Boat Ramp
- Boat/Kayak Rental
- Bridge
- Camp Store
- Campground/Campsite
- Disc Golf
- Dog Park
- Dump Station
- Fishing Access
- Fuel Sales
- Marina
- Parking Lot
- Playground
- Shelter House
- Shower House
- Splash Pad
- Storybook Trailhead
- Trail Access
- Trailhead

North ↑  
 0 0.07 0.15 Mile  
 Scale: 1:2,000  
 Rev: 08/2025



CONSIDER THE DIFFICULTY OF TRAILS.



DOGS MUST BE LEASHED AT ALL TIMES IN THE PARK. PLEASE PICK UP AFTER YOUR PET.



TAKE ONLY PHOTOS, LEAVE ONLY FOOTPRINTS.



PACK OUT WHAT YOU PACK IN AND DISPOSE OF TRASH.



EMERGENCIES CALL 911

NON-EMERGENCIES CALL #ODNR FOR NATURAL RESOURCES OFFICER