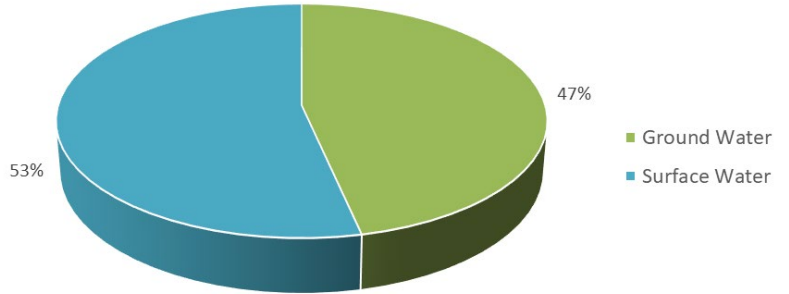


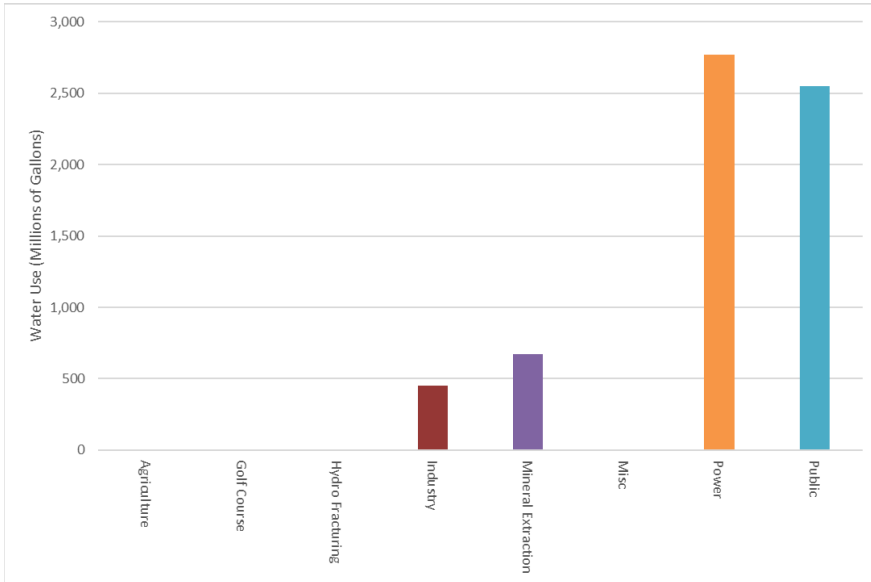
Water Withdrawal in Washington County

Total freshwater withdrawal and source in 2023

Source	Water use, in millions of gallons	Percent of total use
Ground Water	2,998.42	46.56
Surface Water	3,441.31	53.44
Total	6,439.73	100



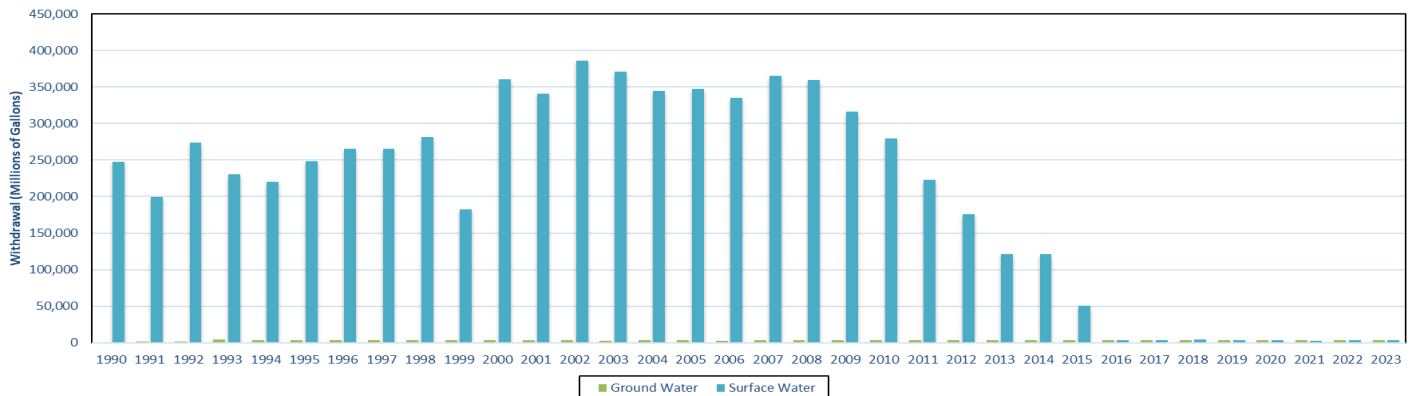
Total freshwater withdrawal by use category in 2023



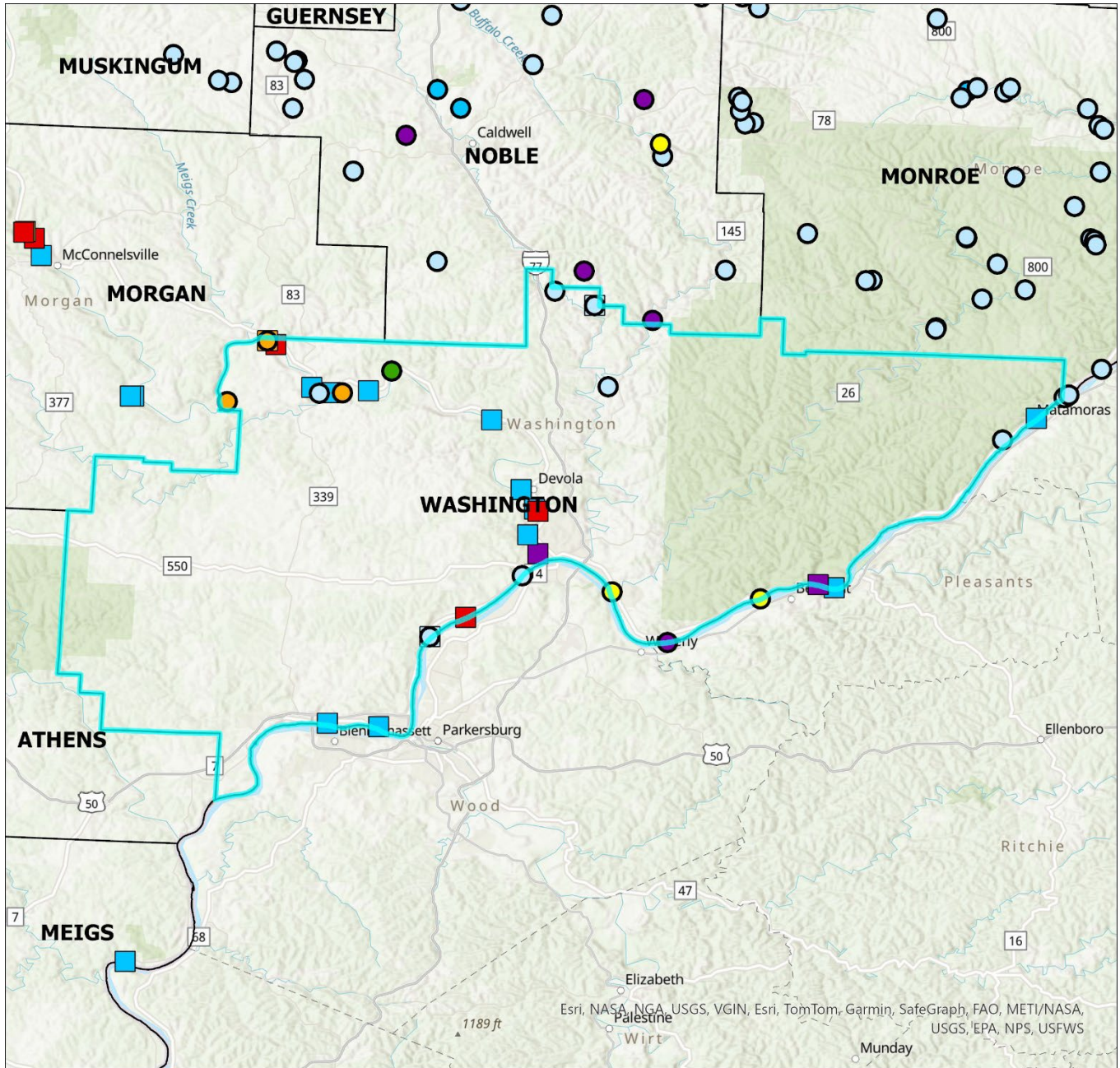
Total freshwater withdrawal by use category in 2023 in millions of gallons

Source	Agriculture	Golf Course	Hydro Fracturing	Industry	Mineral Extraction	Misc	Power	Public	Total
Ground Water	0.00	0.00	0.30	450.41	0.00	0.00	0.00	2,547.71	2,998.42
Surface Water	0.00	0.00	4.16	0.00	669.17	0.00	2,767.98	0.00	3,441.31
Total	0.00	0.00	4.46	450.41	669.17	0.00	2,767.98	2,547.71	6,439.73
Percent Total	0.0	0.0	0.1	7.0	10.4	0.0	43.0	39.6	100.0

Water withdrawal trends



Location of facilities withdrawing water in 2023



2023 Surface Water Withdrawals

Water Use Type

- Agriculture
- Golf Course
- Hydro Fracturing
- Industry
- Mineral Extraction
- Misc
- Power
- Public

2023 Ground Water Withdrawals

Water Use Type

- Agriculture
- Golf Course
- Hydro Fracturing
- Industry
- Mineral Extraction
- Misc
- Power
- Public

- Basin Divide
- County

