

334000 335000 336000 337000 338000 339000 340000 341000 342000

4453001
4452001
4451001
4450001
4449001
4448001
4447001
4446001
4445001
4444001
4443001
4442001



Hoover Reservoir

Delaware and Franklin Counties
2884 Acres of Water
45 Miles of Shoreline



Facilities

- Boat Ramp
- City of Columbus Office
- Parking
- Seasonal Restrooms
- Boat Harbor
- Picnic Area
- Fishing Access

Legend

- Stream Channel
- Marshland
- City of Columbus Property

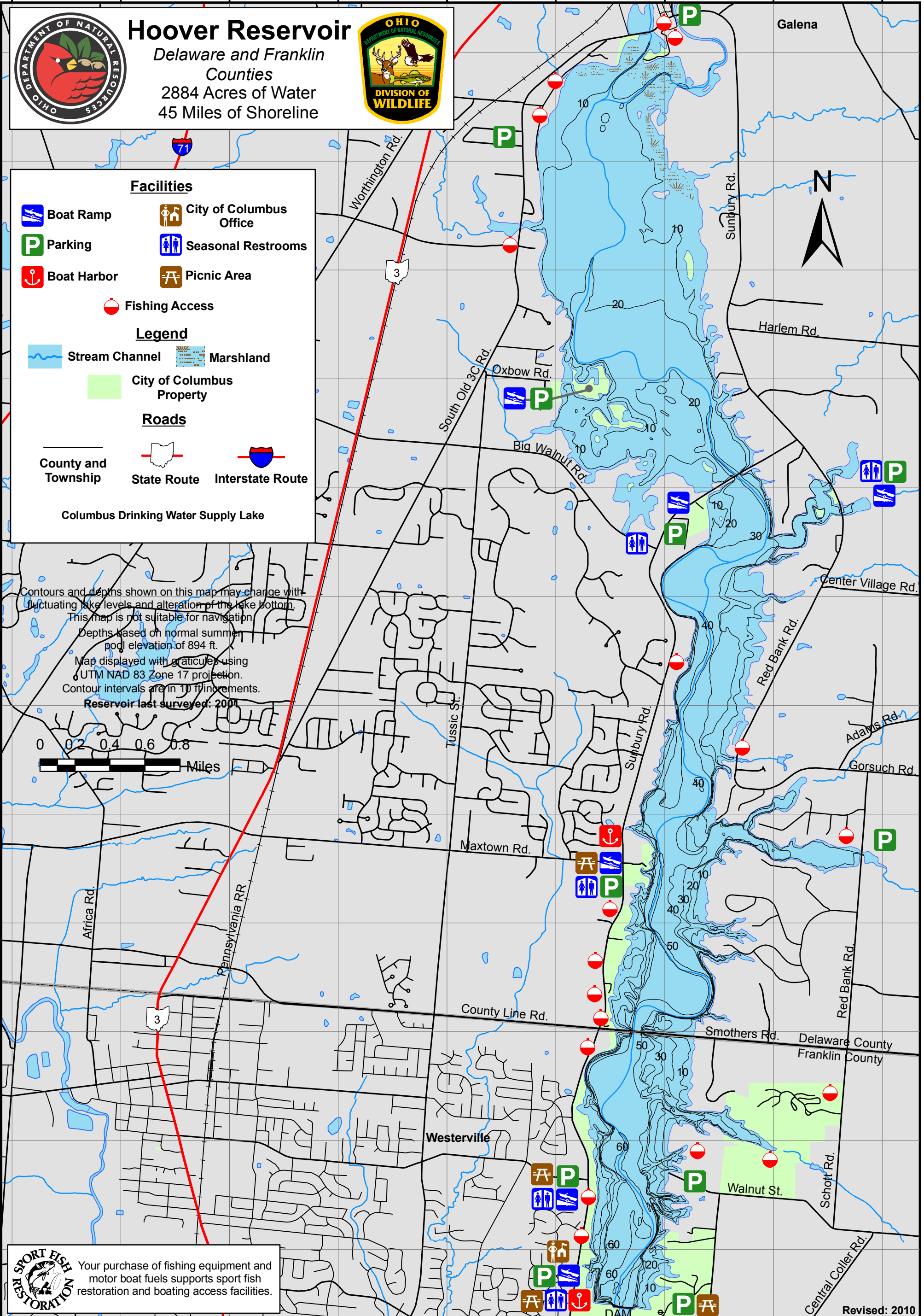
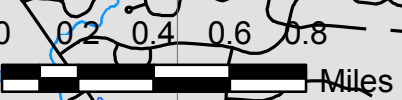
Roads

- County and Township
- State Route
- Interstate Route

Columbus Drinking Water Supply Lake



Contours and depths shown on this map may change with fluctuating lake levels and alteration of the lake bottom. This map is not suitable for navigation. Depths based on normal summer pool elevation of 894 ft. Map displayed with graticules using UTM NAD 83 Zone 17 projection. Contour intervals are in 10 ft increments. Reservoir last surveyed: 2001



SPORT FISH RESTORATION
Your purchase of fishing equipment and motor boat fuels supports sport fish restoration and boating access facilities.

Revised: 2010

Hoover Reservoir Fishing Map