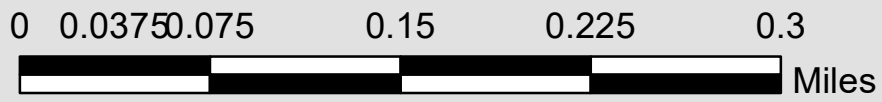




Wellington Upground Reservoir

Lorain County

159 Acres of Water
2 Miles of Shoreline



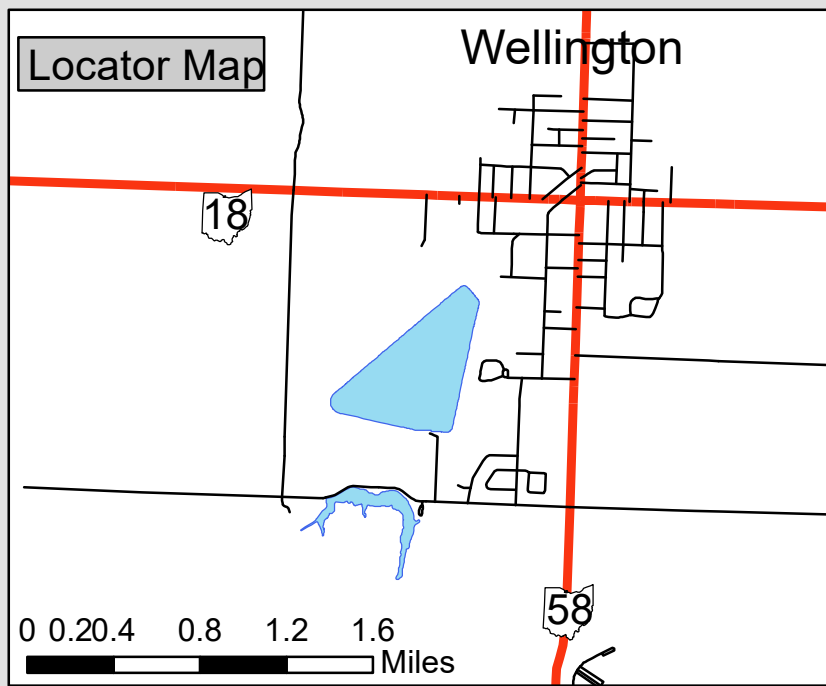
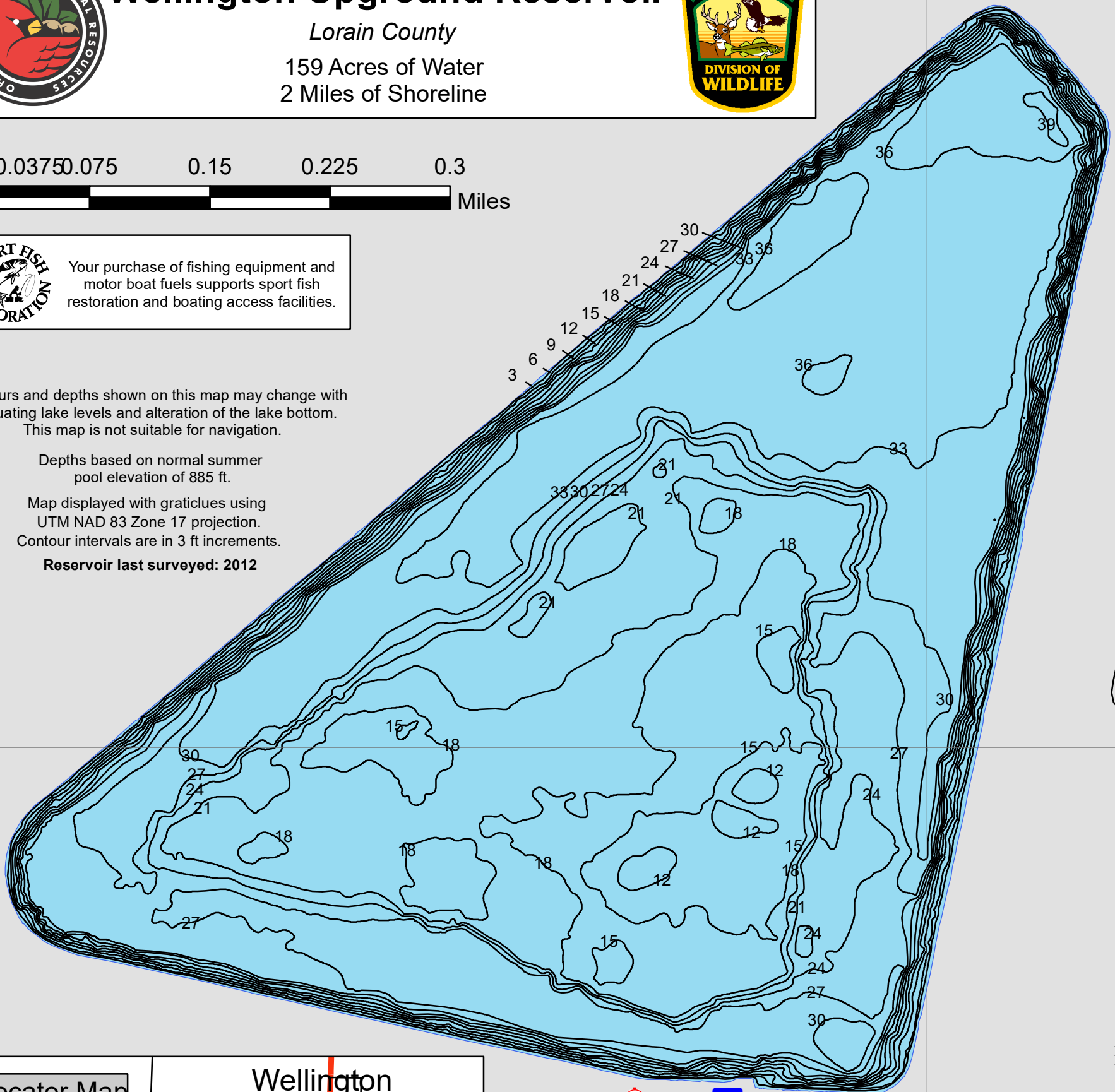
Your purchase of fishing equipment and motor boat fuels supports sport fish restoration and boating access facilities.

Contours and depths shown on this map may change with fluctuating lake levels and alteration of the lake bottom. This map is not suitable for navigation.

Depths based on normal summer pool elevation of 885 ft.

Map displayed with graticules using UTM NAD 83 Zone 17 projection. Contour intervals are in 3 ft increments.

Reservoir last surveyed: 2012



Facilities	Legend	Roads
Parking	Fishing Access	County and Township
Boat Ramp		State Route
Restrooms		

Jones Rd.



Revised: 2020

Wellington Upground Reservoir Fishing Map