

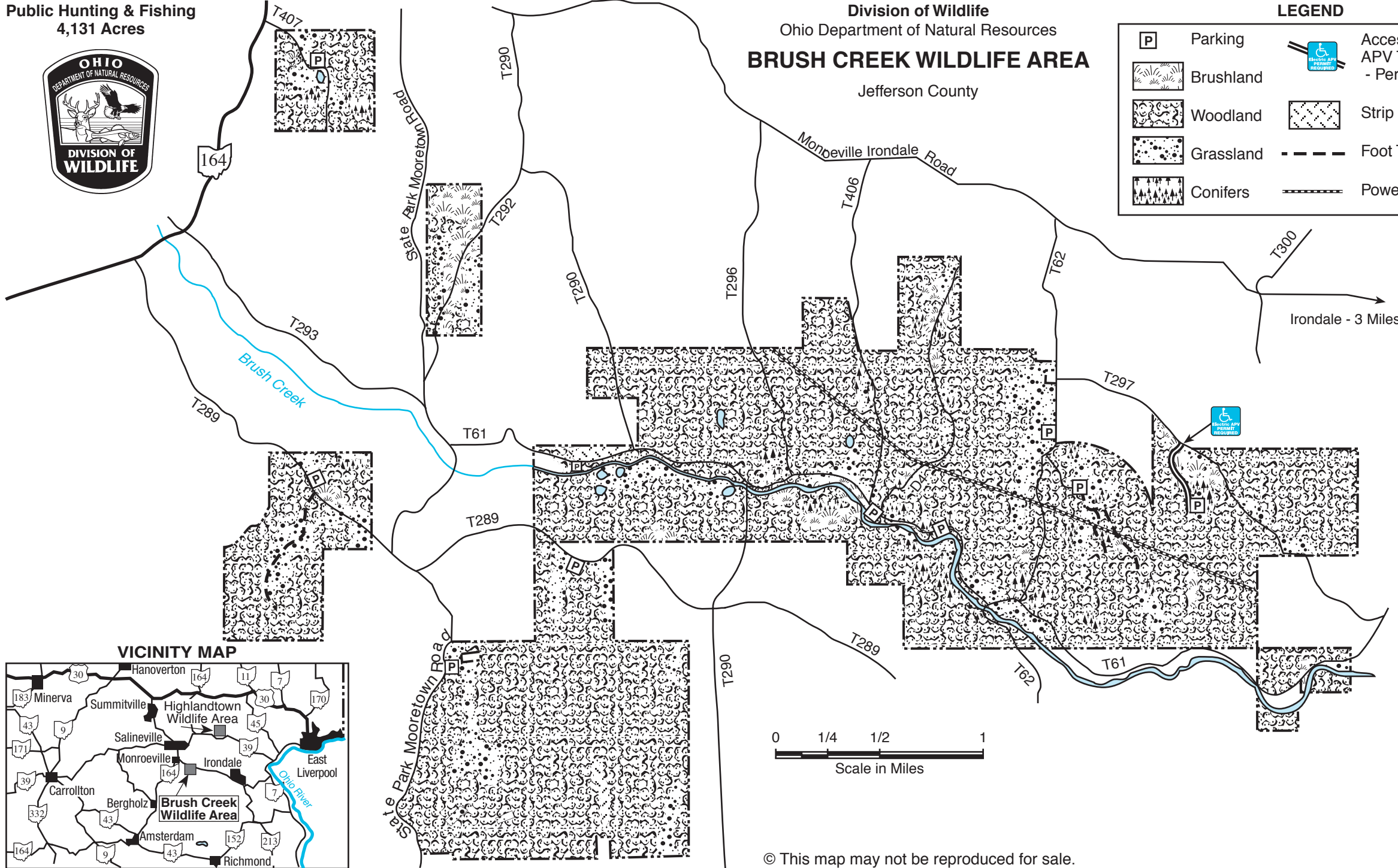
Public Hunting & Fishing  
4,131 Acres



Division of Wildlife  
Ohio Department of Natural Resources  
**BRUSH CREEK WILDLIFE AREA**  
Jefferson County

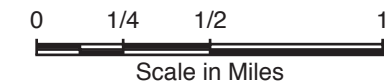
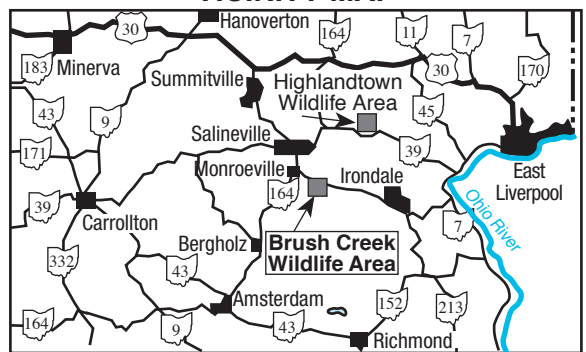
**LEGEND**

	Parking		Accessible Electric APV Trail - Permit Required
	Brushland		Strip Mine
	Woodland		Foot Trail
	Grassland		Power Line
	Conifers		



Irondale - 3 Miles

**VICINITY MAP**



© This map may not be reproduced for sale.

Publication 5019  
(R1021)



# BRUSH CREEK WILDLIFE AREA

Jefferson County

## DISTANCE FROM MAJOR POPULATION CENTERS

- 6 miles from Salineville
- 15 miles from East Liverpool
- 35 miles from Steubenville
- 66 miles from Akron
- 148 miles from Columbus

## LOCATION AND DESCRIPTION

This rugged, 4,131-acre wildlife area lies six miles southeast of Salineville in northern Jefferson County. Access to the area is provided from County Road 55, which is reached from State Route 164 at Monroeville. Several township roads provide direct access to the area from County Road 55.

The deeply dissected terrain is composed of broad ridges with steep slopes which descend to the narrow valley floor of Brush Creek. Elevations vary from 760 to 1,360 feet above mean sea level. Second growth hardwoods occupy 80 percent of the area. Oak and hickory dominate the ridgetops and upper slopes. Maple, beech, elm, ash, and tulip poplar are found in the coves and lower slopes. Open fields and shrubby coverts are confined primarily to the flatter ridgetops and the valley floor.

## HISTORY AND PURPOSE

Purchase of land for this wildlife area began in 1944 and additional land was added as funds became available. Management work has included the planting of thousands of conifers, protection and improvement of the woodlands, selection of areas which will be allowed to return to woodland through natural succession, clear-cuts on small blocks of older timber, and management of existing openfields — all to maintain habitat diversity. Crop rotations and contour strip cropping patterns have been developed to improve food and cover conditions for wildlife. Most management activities are directed toward forest game species.

Hunting is the major recreational use of the area. Two tracts of land totaling 783 acres were purchased in partnership with the National Wild Turkey Federation to provide Ohio's sportsmen and women with quality habitat for additional turkey hunting opportunities.

## FISH AND WILDLIFE

Bluegills, suckers, bullheads, and a few bass are found in the lower portions of Brush Creek. Small ponds contain largemouth bass and bluegills.

Cottontail rabbit, ruffed grouse, gray squirrel, and fox squirrel are the principal game species. White-tailed deer, groundhog, and all furbearers common to the region, including beaver, are found on the area. Live-trapped wild turkeys from southern Ohio were released on this area in 1970.

## HUNTING, TRAPPING, AND FISHING

Brush Creek Wildlife Area has many good squirrel woods. The best rabbit hunting is in the brushy uplands along the field edges and borders. Woodchuck hunting is productive throughout the open areas. Brushy areas, cutover timber stands, pine plantations, and wooded areas produce excellent grouse hunting. Raccoon hunting is good throughout the area, especially along Brush Creek.

Limited trapping and fishing opportunities are provided around ponds and along Brush Creek. Stream fishing is most productive in the spring.

## UNUSUAL FEATURES

The rugged, scenic beauty of the area attracts many sightseers. Visitors find a wide variety of plant communities and in association with them a diversity of songbirds and other wildlife. Hemlock grows along the steep slopes and in deep ravines and coves bordering Brush Creek. In contrast, native pines and huckleberries occupy the dry ridges.

## PUBLIC USE FACILITIES

County and township roads provide good access to most of the wildlife area. Several parking lots are situated throughout the area.

Further information on this wildlife area is available from the Area Manager, Highlandtown Wildlife Area, 16760 Spring Valley Road, Salineville, Ohio 43945, telephone (330) 679-2201; or Wildlife District Three Office, 912 Portage Lakes Drive, Akron, Ohio 44319, telephone (330) 644-2293.

## TURN IN A POACHER

Ohio's TIP, "Turn In a Poacher," program is helping to curtail poaching throughout the state. TIP is designed to involve the public in reporting wildlife violations. Citizens who observe wildlife violations should call the TIP toll-free hotline, 1-800-POACHER.