

# HUNTINGTON TRI-STATE PORT STATISTICAL AREA (PSA)

The Huntington Tri-State PSA covers the Central body of the Ohio River and extends into West Virginia and Kentucky.

## BIOGRAPHY

As its name suggests, the Huntington Tri-State PSA covers three states – Ohio, Kentucky, and West Virginia – stretching 100 miles along the Ohio River, 9 miles along the Big Sandy, and 90 miles along the Kanawha. The PSA is overseen by the Huntington District Waterways Association, which consists of corporations, firms, partnerships, and other maritime stakeholders. The Waterways Association supports improvement projects and facilitates the involvement of key stakeholders.

In 2022, the Huntington Tri-State PSA handled 29.8 million tons of goods. On the Ohio side, 18 active terminals processed a variety of commodities, such as coal & lignite, sand, gravel, stone, petroleum, etc, amounting to 7.2 million. The PSA is connected to both NS and CSX rail lines, with NS primarily serving Ohio docks. It also benefits from roadway connectivity to both US and State Routes, including US 52, and several Ohio Routes.



**18**  
Freight  
Docks (on the  
Ohio Side)



**29.8M**  
Short Tons of Cargo  
Handled by the Entire  
PSA



**7.2M**  
Short Tons of  
Cargo Handled in  
Ohio in 2022

**2000**

The Port of Huntington Tri-State's designation expanded from 14 miles to over 100 miles and is noted as the Port's official establishment date.

**2012**

Named the largest river port in West Virginia and the 15th largest in the nation.

**2019**

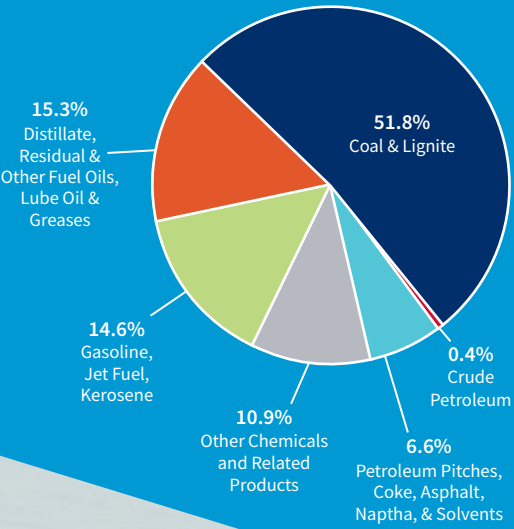
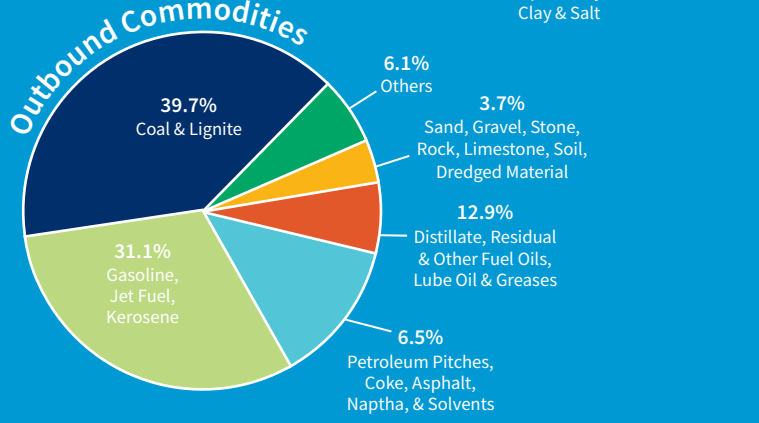
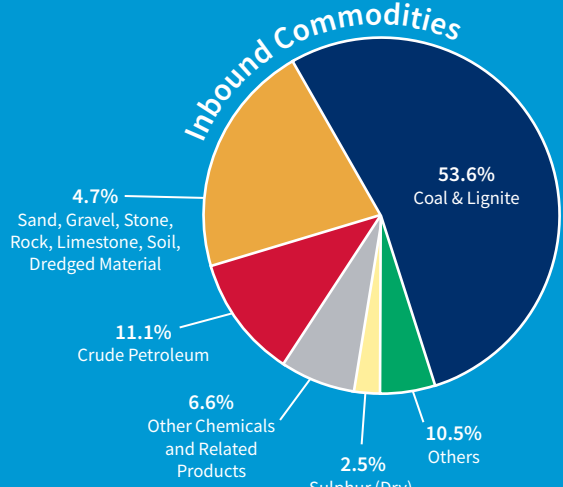
Huntington Tri-State edged out Cincinnati and Northern Kentucky PSA by 200,000 tons as the nation's busiest inland port, likely due in part to a decline in coal reliance and production, according to the USACE's Waterborne Commerce Statistics.

**2022**

The Ohio portion of the PSA led the handling of energy products, particularly coal. The terminals processed over 5 million tons of coal in 2022.

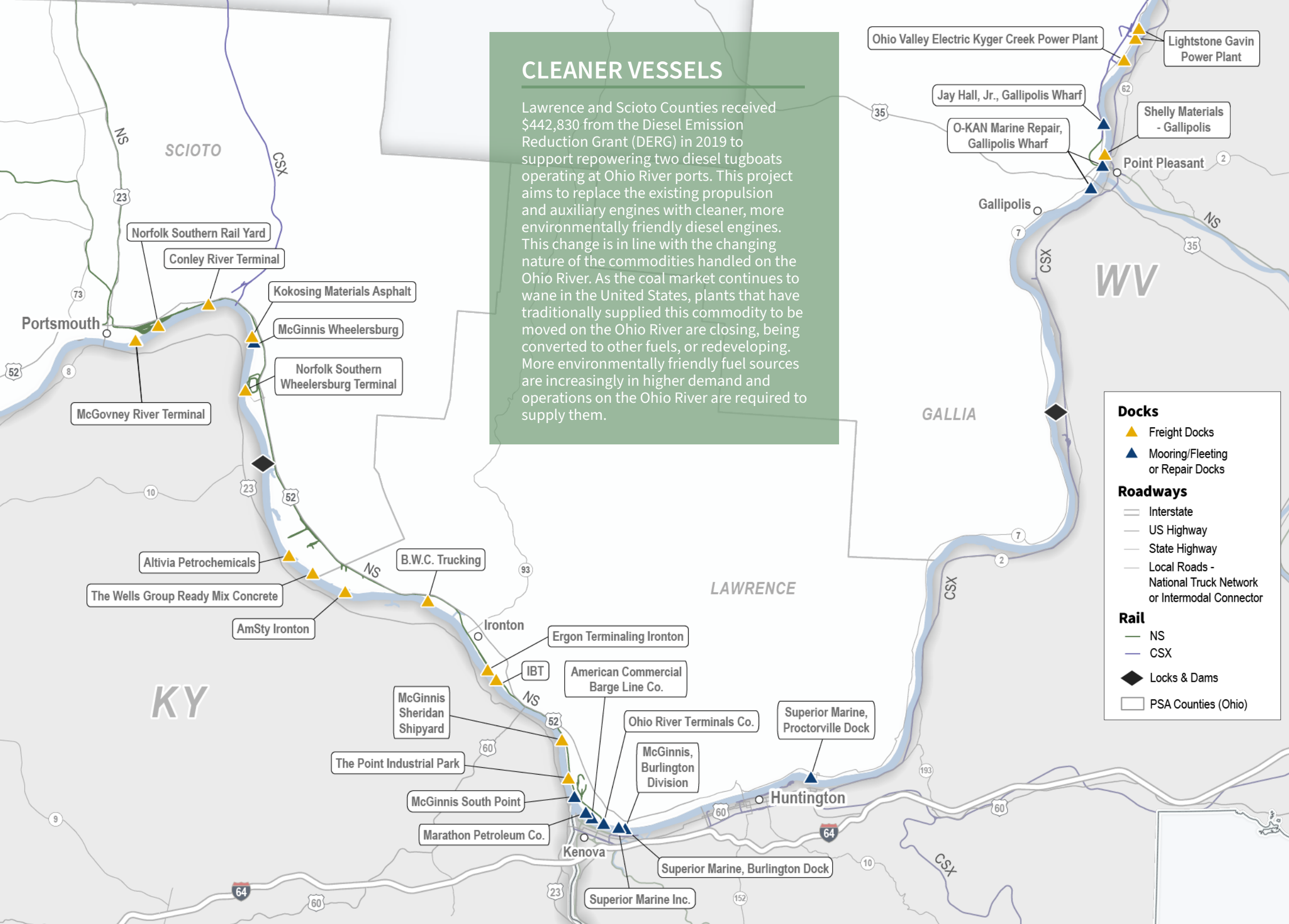
# USE & SUPPLY CHAINS

The Huntington Tri-State PSA has seen a decline in total tonnage handled each year from 2013 to 2022, with the exception of 2021. In 2021, total tonnage rose by approximately 1.5 million tons from the previous year, before dropping again in 2022. Of the 29.8 million tons of goods handled in 2022, the majority of shipments were comprised of coal and lignite (46.2%), followed by gasoline (13.7%), distillate fuel oil (8.1%), and limestone (7.7%).



## CLEANER VESSELS

Lawrence and Scioto Counties received \$442,830 from the Diesel Emission Reduction Grant (DERG) in 2019 to support repowering two diesel tugboats operating at Ohio River ports. This project aims to replace the existing propulsion and auxiliary engines with cleaner, more environmentally friendly diesel engines. This change is in line with the changing nature of the commodities handled on the Ohio River. As the coal market continues to wane in the United States, plants that have traditionally supplied this commodity to be moved on the Ohio River are closing, being converted to other fuels, or redeveloping. More environmentally friendly fuel sources are increasingly in higher demand and operations on the Ohio River are required to supply them.



## FACILITIES & MULTIMODAL CONNECTIONS



### HIGHWAY

Key regional routes that serve the Port include:

- Interstate:** Outside OH: I-64
- US Highway:** US 32, US 52; Outside OH: US 23, US 60
- State Highway:** OH 7, OH 93, OH 140, OH 243, OH 735, OH 823



### RAIL

Served by railroads: **CSX, NS**  
**12 out of 18** docks have rail connections

Truck Trips Originating and Ending in Huntington PSA



Less More

# ECONOMIC IMPACT

Strategically located in Southern Ohio along the Ohio River, The Point Industrial Park offers many logistical advantages, including over eight miles of rail service, 3,400 feet of riverfront, and access to I-64. The site is highly adaptable, accommodating a wide range of industries with existing infrastructure including new buildings and storage tanks. A notable customer is Harbison Walker International, which owns a 126,000 square foot manufacturing facility built and became operational in 9 months.



## THE POINT INDUSTRIAL PARK

**In 2023, the Port  
of Huntington  
Tri-State:**

Created  
**1,660**  
Direct Jobs

Generated  
**\$3.7 Billion**  
Economic Impact

## TOP CAPITAL NEEDS

Several capital needs for the Huntington Tri-State PSA have been identified in Lawrence County, Ohio. These include projects that would improve access to port infrastructure and improve the efficiency and capacity of port operations. For example, identified capital needs projects include the addition of conveyors to transport goods from barges to existing bunkers and funding to construct a bridge crane for an existing cargo dock. These types of projects are currently unfunded, but if funded would improve operational efficiency.

## MELDAHL HYDROELECTRIC PROJECT

The Meldahl Hydroelectric Facility, operating since 2016, is the largest hydroelectric plant on the Ohio River. It is a 105 MW run-of-the-river facility situated on the Kentucky side of the Ohio River, adjacent to Captain Anthony Meldahl Locks and Dam. The Meldahl Locks and Dams require repair to continue to provide consistent service and capacity for barge traffic. Currently, the facility's main purpose is as a river control dam and to generate hydroelectricity.



### Reference

Banner photo (Page 1); iStock, Use & Supply, Pie Charts (Page 3); USACE WSCS Commerce Data, 2024, Facility Map (Page 2-3); ODOT, CORIS, USACE, Cartography by CPCS, | Truck Trips Originating and Ending at the Port of Huntington Tri-State (Page 3); WSP Analysis of Replica Data, USACE, ODOT, Cartography by CPCS (2024) | Economic Impact (Page 4); The Point: South Point's Industrial Park on the Ohio River, [Link](#) | Economic Impact Photo (Page 4); The Point Park | Capital Needs (Page 4); AMP Public Power Partners, Hydro Plant Meldahl, [Link](#) | Capital Needs Photo (Page 4); AMP Public Power Partners, Hydro Plant Meldahl, [Link](#)