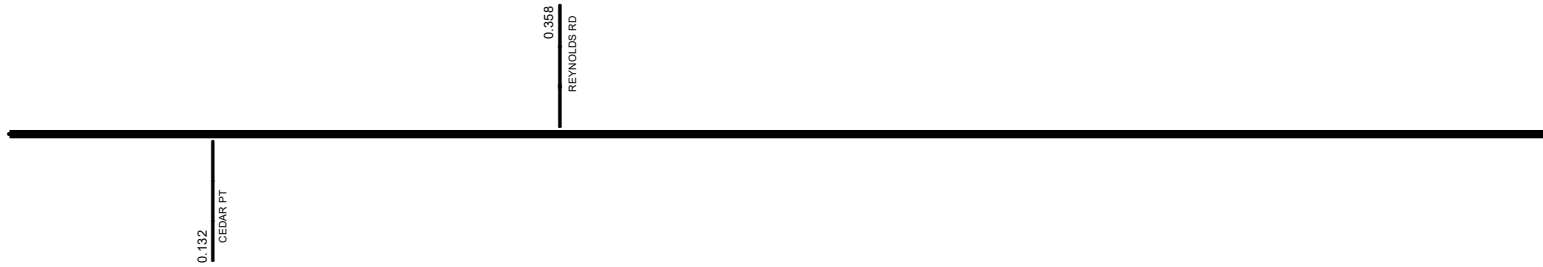


SCLISR00133**C

State True Log 38.034

39.034

County True Log



Surface Type & Width (Left / Right)

	G 20'
	0 - 2.118

Base Type (Left / Right)

K	I
0 - 0.254	0.254 - 2.481

Shoulder Type & Width (Left / Right)

	2 (1/1')
	0 - 1.621

Through Lanes

	2
	0 - 2.481

Street Name

	SR 133
	0 - 1.621

- | | | | |
|---------------------|-------------------|----------------------|--------------|
| Non-divided Highway | Bridge (on route) | Railroad (at grade) | Intersection |
| Divided Highway | Underpass | Railroad (underpass) | |
| Secondary Segment | Overpass | Railroad (overpass) | |
| Corporation | | | |

Created on: 6/24/2025

transportation.ohio.gov

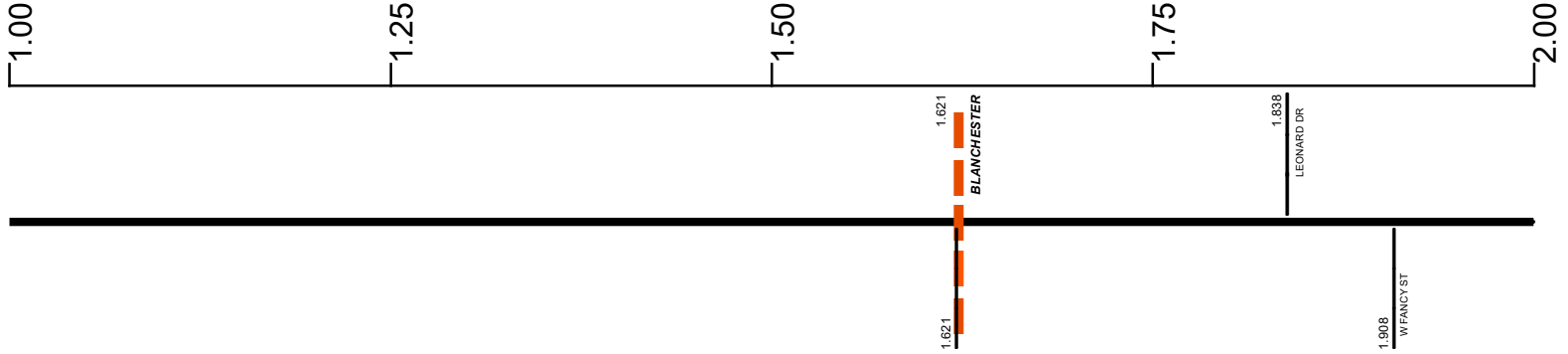
Prepared by
The Ohio Department of Transportation
Office of Technical Services
Roadway Information

SCLISR00133**C

State True Log

40.034

County True Log



Surface Type & Width (Left / Right)

	G 20'
	0 - 2.118

Base Type (Left / Right)

	I
	0.254 - 2.481

Shoulder Type & Width (Left / Right)

2 (1'1')	5 (2'1/2')
0 - 1.621	1.621 - 2.118

Through Lanes

2
0 - 2.481

Street Name

SR 133	BOURBON ST
0 - 1.621	1.621 - 2.481

- | | | | |
|---|---|---|---|
| <ul style="list-style-type: none"> Non-divided Highway Divided Highway Secondary Segment Corporation | <ul style="list-style-type: none"> Bridge (on route) Underpass Overpass | <ul style="list-style-type: none"> Railroad (at grade) Railroad (underpass) Railroad (overpass) | <ul style="list-style-type: none"> Intersection |
|---|---|---|---|

Created on: 6/24/2025

transportation.ohio.gov

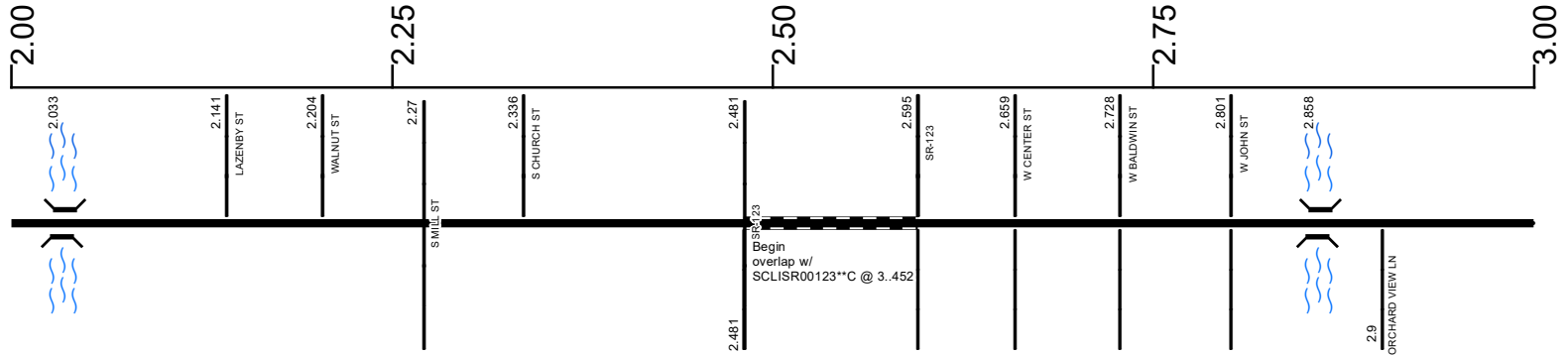
Prepared by
The Ohio Department of Transportation
Office of Technical Services
Roadway Information

SCLISR00133**C

State True Log

41.034

County True Log



Surface Type & Width (Left / Right)

G 20'	G (12'/13')	G 38'	G (20'/21')
0 - 2.118	2.118 - 2.141	2.141 - 2.339	2.339 - 2.481

Base Type (Left / Right)

I
0.254 - 2.481

Shoulder Type & Width (Left / Right)

5 (2'/2')	5 (2'/0')	1 (0'/0')
1.621 - 2.118	2.118 - 2.141	2.141 - 2.481

Through Lanes

2
0 - 2.481

Street Name

BOURBON ST
1.621 - 2.481

Surface Type & Width (Left / Right)

G (22'/23')	G (18'/19')
2.595 - 2.801	2.801 - 3.005

Base Type (Left / Right)

I
2.595 - 9.179

Shoulder Type & Width (Left / Right)

1 (0'/0')
2.595 - 3.005

Through Lanes

2
2.595 - 9.179

N BROADWAY ST
2.595 - 3.005

- Non-divided Highway
- Divided Highway
- Secondary Segment
- Corporation
- Bridge (on route)
- Underpass
- Overpass
- Railroad (at grade)
- Railroad (underpass)
- Railroad (overpass)
- Intersection

Created on: 6/24/2025

transportation.ohio.gov

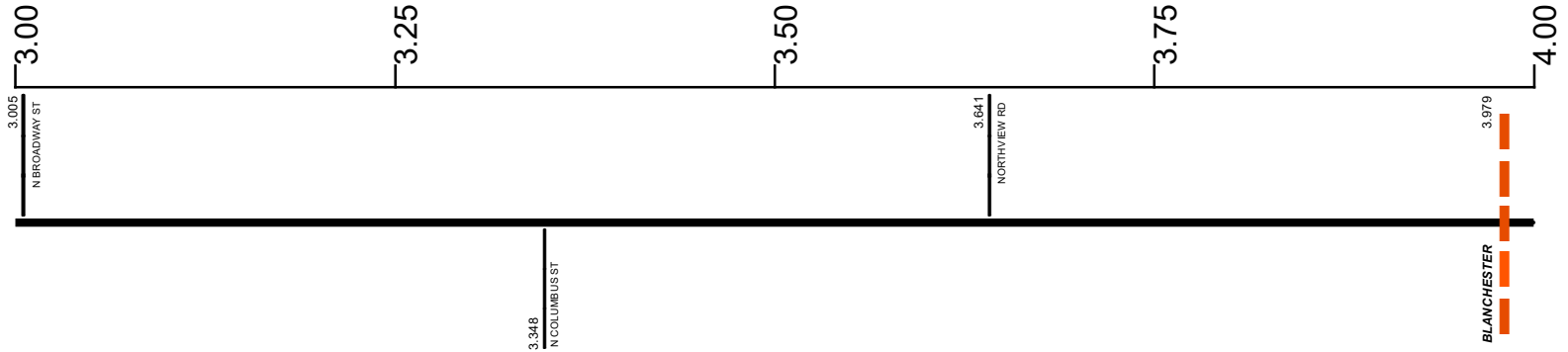
Prepared by
The Ohio Department of Transportation
Office of Technical Services
Roadway Information

SCLISR00133**C

State True Log

42.034

County True Log



Surface Type & Width (Left / Right)

G (18/19')	G 20'	
	3.005 - 5.858	

Base Type (Left / Right)

	I	
	2.595 - 9.179	

Shoulder Type & Width (Left / Right)

1 (0/0')	5 (2/2')	5 (3/3')
2.595 - 3.005	3.005 - 3.979	3.979 - 5.858

Through Lanes

	2	
	2.595 - 9.179	

Street Name

N BROADWAY ST	PANSY PIKE	SR 133
2.595 - 3.005	3.005 - 3.979	3.979 - 9.179

- | | | | |
|---------------------|-------------------|----------------------|--------------|
| Non-divided Highway | Bridge (on route) | Railroad (at grade) | Intersection |
| Divided Highway | Underpass | Railroad (underpass) | |
| Secondary Segment | Overpass | Railroad (overpass) | |
| Corporation | | | |

Created on: 6/24/2025

transportation.ohio.gov

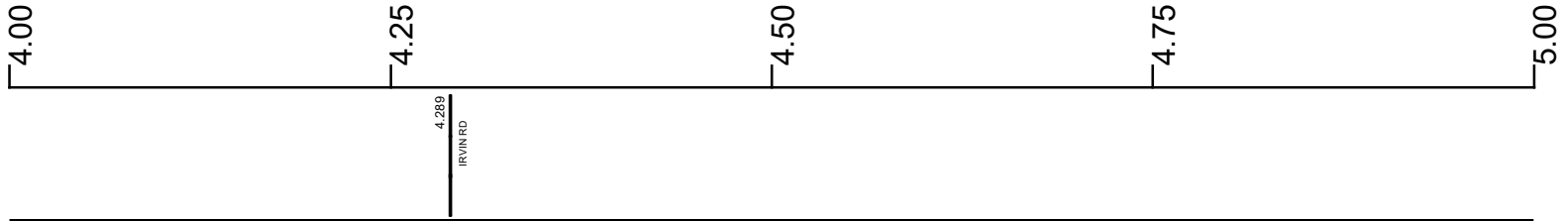
Prepared by
The Ohio Department of Transportation
Office of Technical Services
Roadway Information

SCLISR00133**C

State True Log

43.034

County True Log



Surface Type & Width (Left / Right)

G 20'
3.005 - 5.858

Base Type (Left / Right)

I
2.595 - 9.179

Shoulder Type & Width (Left / Right)

5 (3/3)
3.979 - 5.858

Through Lanes

2
2.595 - 9.179

Street Name

SR 133
3.979 - 9.179

- | | | | |
|---------------------|-------------------|----------------------|--------------|
| Non-divided Highway | Bridge (on route) | Railroad (at grade) | Intersection |
| Divided Highway | Underpass | Railroad (underpass) | |
| Secondary Segment | Overpass | Railroad (overpass) | |
| Corporation | | | |

Created on: 6/24/2025

transportation.ohio.gov

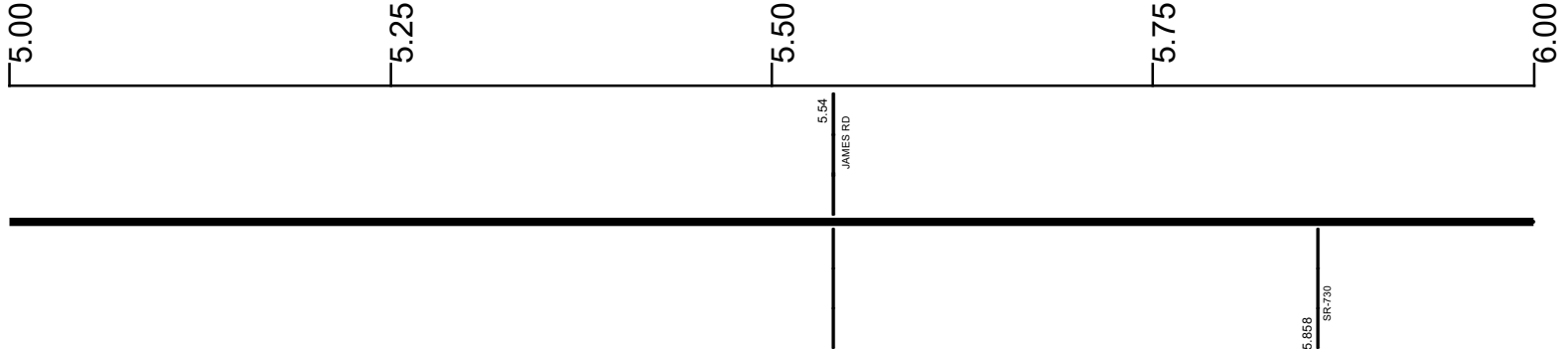
Prepared by
The Ohio Department of Transportation
Office of Technical Services
Roadway Information

SCLISR00133**C

State True Log

44.034

County True Log



Surface Type & Width (Left / Right)

G 20' 3.005 - 5.858	G 18' 5.858 - 9.179
------------------------	------------------------

Base Type (Left / Right)

I 2.595 - 9.179	
--------------------	--

Shoulder Type & Width (Left / Right)

5 (3/3') 3.979 - 5.858	5 (2/2') 5.858 - 9.179
---------------------------	---------------------------

Through Lanes

2 2.595 - 9.179	
--------------------	--

Street Name

SR 133 3.979 - 9.179	
-------------------------	--

- | | | | |
|--|---|---|---|
| <ul style="list-style-type: none"> Non-divided Highway Divided Highway Secondary Segment Corporation | <ul style="list-style-type: none"> Bridge (on route) Underpass Overpass | <ul style="list-style-type: none"> Railroad (at grade) Railroad (underpass) Railroad (overpass) | <ul style="list-style-type: none"> Intersection |
|--|---|---|---|

Created on: 6/24/2025

transportation.ohio.gov

Prepared by
The Ohio Department of Transportation
Office of Technical Services
Roadway Information

SCLISR00133**C

State True Log

45.034

County True Log



Surface Type & Width (Left / Right)

	G 18'
	5.858 - 9.179

Base Type (Left / Right)

	I
	2.595 - 9.179

Shoulder Type & Width (Left / Right)

	5 (2/2')
	5.858 - 9.179

Through Lanes

	2
	2.595 - 9.179

Street Name

	SR 133
	3.979 - 9.179

- | | | | |
|--|---|---|---|
| <ul style="list-style-type: none"> Non-divided Highway Divided Highway Secondary Segment Corporation | <ul style="list-style-type: none"> Bridge (on route) Underpass Overpass | <ul style="list-style-type: none"> Railroad (at grade) Railroad (underpass) Railroad (overpass) | <ul style="list-style-type: none"> Intersection |
|--|---|---|---|

Created on: 6/24/2025

transportation.ohio.gov

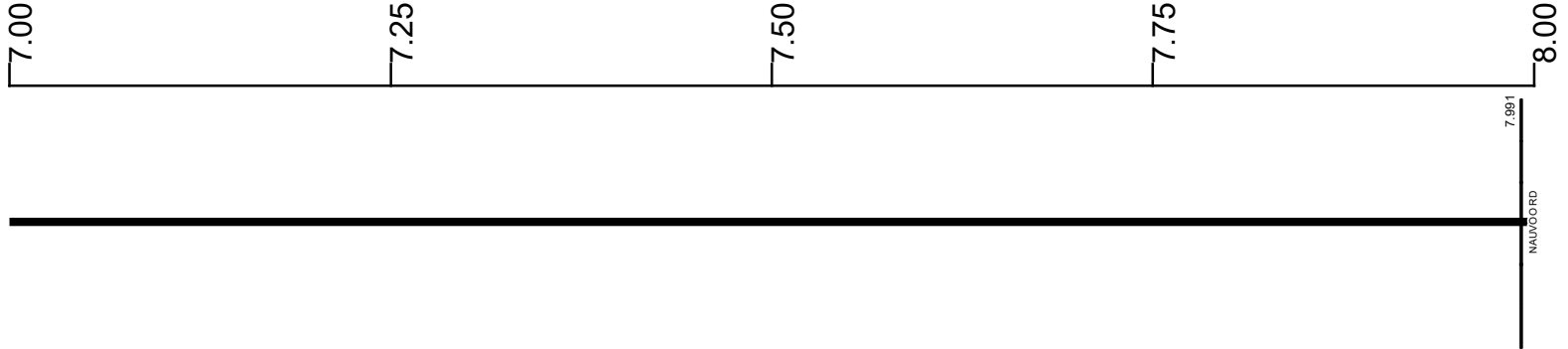
Prepared by
The Ohio Department of Transportation
Office of Technical Services
Roadway Information

SCLISR00133**C

State True Log

46.034

County True Log



Surface Type & Width (Left / Right)

G 18'
5.858 - 9.179

Base Type (Left / Right)

I
2.595 - 9.179

Shoulder Type & Width (Left / Right)

5 (2/2)
5.858 - 9.179

Through Lanes

2
2.595 - 9.179

Street Name

SR 133
3.979 - 9.179

- Non-divided Highway
- Divided Highway
- Secondary Segment
- Corporation
- Bridge (on route)
- Underpass
- Overpass
- Railroad (at grade)
- Railroad (underpass)
- Railroad (overpass)
- Intersection

Created on: 6/24/2025



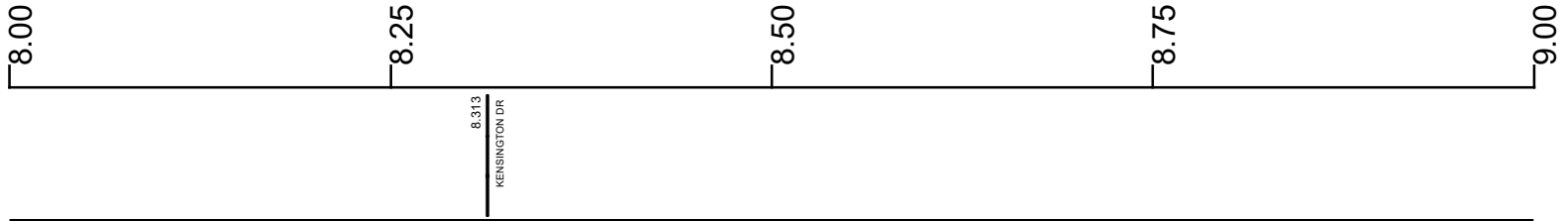
Prepared by
The Ohio Department of Transportation
Office of Technical Services
Roadway Information

SCLISR00133**C

State True Log

47.034

County True Log



Surface Type & Width (Left / Right)

	G 18'
	5.858 - 9.179

Base Type (Left / Right)

	I
	2.595 - 9.179

Shoulder Type & Width (Left / Right)

	5 (2/2')
	5.858 - 9.179

Through Lanes

	2
	2.595 - 9.179

Street Name

	SR 133
	3.979 - 9.179

- | | | | |
|---------------------|-------------------|----------------------|--------------|
| Non-divided Highway | Bridge (on route) | Railroad (at grade) | Intersection |
| Divided Highway | Underpass | Railroad (underpass) | |
| Secondary Segment | Overpass | Railroad (overpass) | |
| Corporation | | | |

Created on: 6/24/2025

transportation.ohio.gov

Prepared by
The Ohio Department of Transportation
Office of Technical Services
Roadway Information

SCLISR00133**C

State True Log

48.034

County True Log



Begin overlap w/
SCLISR00132**C @ .

Surface Type & Width (Left / Right)

G 18'

5.858 - 9.179

Base Type (Left / Right)

I

2.595 - 9.179

Shoulder Type & Width (Left / Right)

5 (2'/2')

5.858 - 9.179

Through Lanes

2

2.595 - 9.179

Street Name

SR 133

3.979 - 9.179

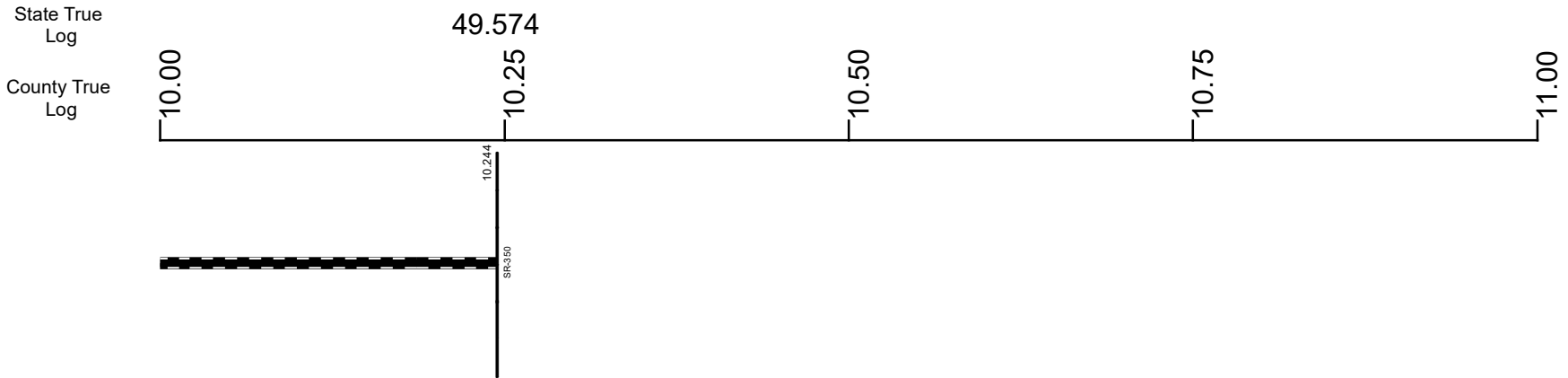
- | | | | |
|---|---|---|---|
| <ul style="list-style-type: none"> Non-divided Highway Divided Highway Secondary Segment Corporation | <ul style="list-style-type: none"> Bridge (on route) Underpass Overpass | <ul style="list-style-type: none"> Railroad (at grade) Railroad (underpass) Railroad (overpass) | <ul style="list-style-type: none"> Intersection |
|---|---|---|---|

Created on: 6/24/2025

transportation.ohio.gov

Prepared by
The Ohio Department of Transportation
Office of Technical Services
Roadway Information

SCLISR00133**C



- | | | | |
|---------------------|-------------------|----------------------|--------------|
| Non-divided Highway | Bridge (on route) | Railroad (at grade) | Intersection |
| Divided Highway | Underpass | Railroad (underpass) | |
| Secondary Segment | Overpass | Railroad (overpass) | |
| Corporation | | | |

Created on: 6/24/2025



transportation.ohio.gov

Prepared by
The Ohio Department of Transportation
Office of Technical Services
Roadway Information

Historical Project List for SCLISR00133**C

Begin Measure	End Measure	Project ID Number	Construction Completion Date	Treatment Category	Treatment Type
0.000	2.481	94201	1-2021	Minor Rehabilitation	38-Fine Poly AC Overlay
0.000	1.621	75894	10-2008	Minor Rehabilitation	60-AC Overlay w/Rpr
2.605	3.005	85137	12-2017	Minor Rehabilitation	60-AC Overlay w/Rpr
3.005	3.015	85137	12-2017	Minor Rehabilitation	60-AC Overlay w/Rpr
3.015	3.556	85137	12-2017	Minor Rehabilitation	60-AC Overlay w/Rpr
5.867	9.179	84469	11-2012	Minor Rehabilitation	60-AC Overlay w/Rpr

Roadway Codes

Access Control Journalized

- F - Full Access Control
- L - Limited Access Control
- N - No Access Control

Access Control Operational

- 1 - Full Access Control
- 2 - Partial Access Control
- 3 - No Access Control

Base Type

- F - Crack and Seat
- H - Rubblize and Roll
- I - Aggregate Base 304 or Traffic Compacted
- K - Water Bound Macadam
- L - Bituminous Concrete Mix or Penetration Macadam
- N - Plain Concrete
- P - Reinforced Concrete
- R - Brick (Flexible)
- T - Brick (Rigid)

Direction of Travel

- B - Both (Two-way)
- F - One-way Cardinal
- T - One-way Non-cardinal

Facility Type

- 1 - One-way Roadway
- 2 - Two-way Roadway
- 4 - Ramp
- 5 - Non-mainline
- 6 - Non-inventory Direction
- 7 - Planned / Unbuilt

Historical Federal Aid Indicator

- N - Not a FAP Route
- Y - FAP Route

Functional Classification

- 01 - Interstate
- 02 - Principal Arterial (Freeways)
- 03 - Principal Arterial (Other)
- 04 - Minor Arterial
- 05 - Major Collector
- 06 - Minor Collector
- 07 - Local

Leave / Reenter Indicator

- Y - Route leaves/reenters at this point
- N - Route does not leave/reenter at this point

Median Type

- 1 - None
- 2 - Unprotected
- 3 - Curbed
- 4 - Positive Barrier (Unspecified)
- 5 - Positive Barrier (Flexible)
- 6 - Positive Barrier (Semi-rigid)
- 7 - Positive Barrier (Rigid)

NHS

- N - National Highway System
- H - Congressional Corridor
- 2 - Major Airport
- 3 - Major Port Facility
- 4 - Major Amtrak Station
- 5 - Major Rail / Truck Terminal
- 6 - Major Intercity Bus Terminal
- 7 - Major Public Transit / Multi-modal Passenger Terminal
- 8 - Major Pipeline Terminal
- 9 - Major Ferry Terminal

Priority System

- G - General
- P - Priority System
- U - Urban

Scenic Byway Code

- A - All American Road
- N - National Scenic Byway
- S - State Scenic Byway

Shoulder Type

- 1 - None
- 2 - Surfaced shoulder exists (bituminous concrete {AC})
- 3 - Surfaced shoulder exists (Portland Cement Concrete {PCC})
- 4 - Stabilized shoulder exists (gravel or other granular material)
- 5 - Combination shoulder exists (two or more surface types)
- 6 - Earth shoulder exists
- 7 - Barrier curb exists; no shoulder in front of curb

Surface Type

- A - Combination
- B - Brick
- C - Continuous Reinforced Concrete
- D - Reinforced Concrete
- E - Plain Concrete
- G - Bituminous Concrete
- I - Chipseal on Granular
- K - Open Graded Bituminous
- L - Chipseal or Micro
- M - Gravel
- U - Unimproved
- X - Right of Way Only