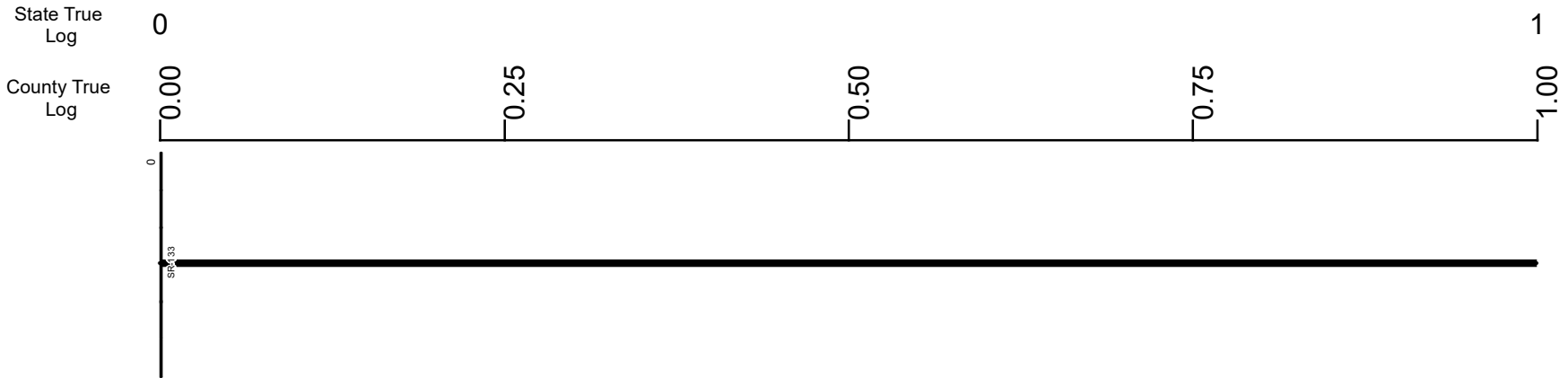


SCLISR00730**C



Surface Type & Width (Left / Right)	G (8'/9')
	0 - 2.328
Base Type (Left / Right)	I
	0 - 10.972
Shoulder Type & Width (Left / Right)	2 (2'/2')
	0 - 2.328
Through Lanes	2
	0 - 11.426
Street Name	SR 730
	0 - 10.075

- Non-divided Highway
- Divided Highway
- Secondary Segment
- Corporation
- Bridge (on route)
- Underpass
- Overpass
- Railroad (at grade)
- Railroad (underpass)
- Railroad (overpass)
- Intersection

Created on: 6/24/2025



transportation.ohio.gov

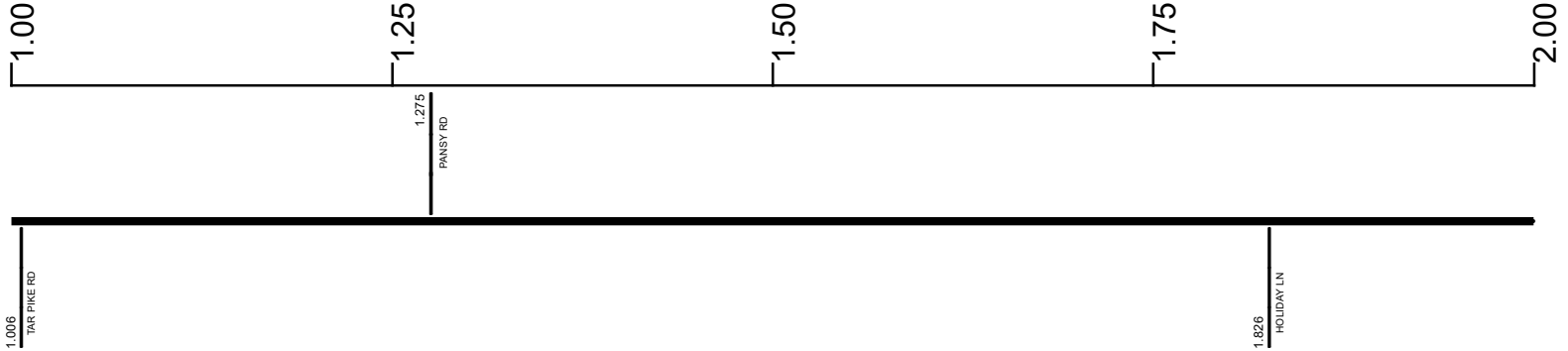
Prepared by
The Ohio Department of Transportation
Office of Technical Services
Roadway Information

SCLISR00730**C

State True Log

2

County True Log



Surface Type & Width (Left / Right)

G (8'/9')
0 - 2.328

Base Type (Left / Right)

I
0 - 10.972

Shoulder Type & Width (Left / Right)

2 (2'/2')
0 - 2.328

Through Lanes

2
0 - 11.426

Street Name

SR 730
0 - 10.075

- Non-divided Highway
 Bridge (on route)
 Railroad (at grade)
 Intersection
- Divided Highway
 Underpass
 Railroad (underpass)
- Secondary Segment
 Overpass
 Railroad (overpass)
- Corporation**

Created on: 6/24/2025



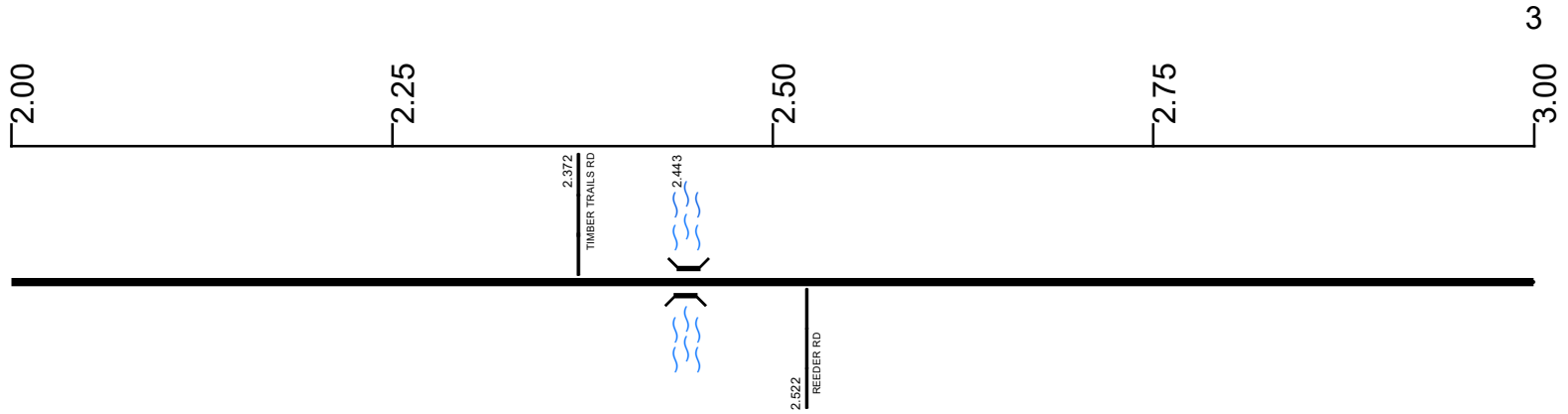
transportation.ohio.gov

Prepared by
The Ohio Department of Transportation
Office of Technical Services
Roadway Information

SCLISR00730**C

State True Log

County True Log



Surface Type & Width (Left / Right)

G (8'/9')	G 20'	G (8'/9')
0 - 2.328	2.328 - 2.569	2.569 - 3.979

Base Type (Left / Right)

I
0 - 10.972

Shoulder Type & Width (Left / Right)

2 (2'/2')	2 (1'/1')	2 (2'/2')
0 - 2.328	2.328 - 2.569	2.569 - 3.979

Through Lanes

2
0 - 11.426

Street Name

SR 730
0 - 10.075

- Non-divided Highway
- Divided Highway
- Secondary Segment
- Corporation
- Bridge (on route)
- Underpass
- Overpass
- Railroad (at grade)
- Railroad (underpass)
- Railroad (overpass)
- Intersection

Created on: 6/24/2025

transportation.ohio.gov

Prepared by
The Ohio Department of Transportation
Office of Technical Services
Roadway Information

SCLISR00730**C

State True
Log

4

County True
Log



Surface Type & Width (Left / Right)

G (8'/9')	G (20')
2.569 - 3.979	3.979 - 6.197

Base Type (Left / Right)

I	
0 - 10.972	

Shoulder Type & Width (Left / Right)

2 (2'/2')	5 (4'/4')
2.569 - 3.979	3.979 - 6.197

Through Lanes

2	
0 - 11.426	

Street Name

SR 730	
0 - 10.075	

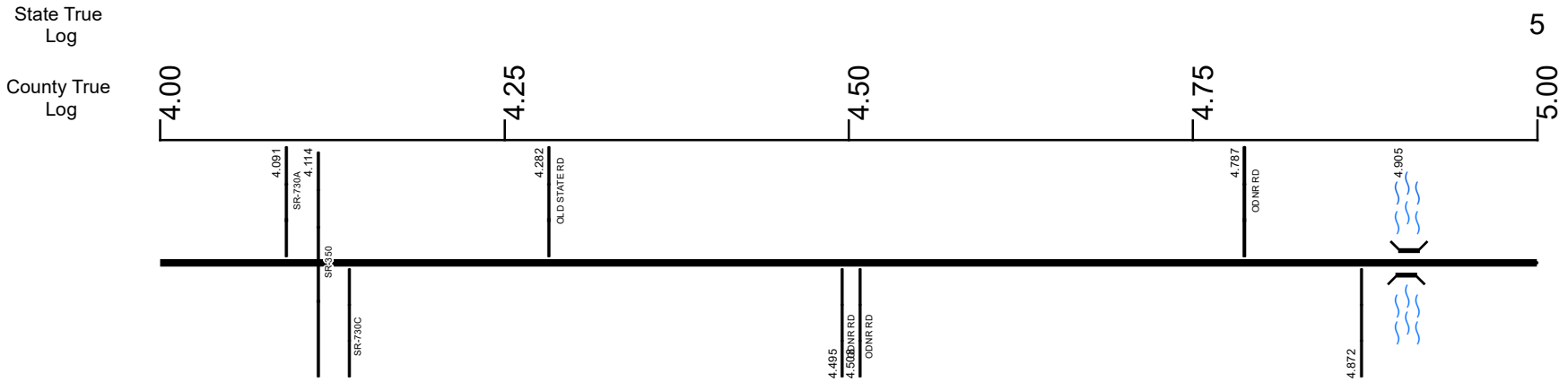
- Non-divided Highway
- Divided Highway
- Secondary Segment
- Corporation
- Bridge (on route)
- Underpass
- Overpass
- Railroad (at grade)
- Railroad (underpass)
- Railroad (overpass)
- Intersection

Created on: 6/24/2025

transportation.ohio.gov

Prepared by
The Ohio Department of Transportation
Office of Technical Services
Roadway Information

SCLISR00730**C



Surface Type & Width (Left / Right)	G 20' 3.979 - 6.197
Base Type (Left / Right)	I 0 - 10.972
Shoulder Type & Width (Left / Right)	5 (4/4') 3.979 - 6.197
Through Lanes	2 0 - 11.426
Street Name	SR 730 0 - 10.075

Non-divided Highway	Bridge (on route)	Railroad (at grade)	Intersection
Divided Highway	Underpass	Railroad (underpass)	
Secondary Segment	Overpass	Railroad (overpass)	
Corporation			

Created on: 6/24/2025



transportation.ohio.gov
Prepared by
The Ohio Department of Transportation
Office of Technical Services
Roadway Information

SCLISR00730**C

State True Log

6

County True Log

5.00

5.25

5.50

5.75

6.00



Surface Type & Width (Left / Right)

G 20'
3.979 - 6.197

Base Type (Left / Right)

I
0 - 10.972

Shoulder Type & Width (Left / Right)

5 (4/4')
3.979 - 6.197

Through Lanes

2
0 - 11.426

Street Name

SR 730
0 - 10.075

- | | | | |
|---------------------|-------------------|----------------------|--------------|
| Non-divided Highway | Bridge (on route) | Railroad (at grade) | Intersection |
| Divided Highway | Underpass | Railroad (underpass) | |
| Secondary Segment | Overpass | Railroad (overpass) | |
| Corporation | | | |

Created on: 6/24/2025



transportation.ohio.gov
 Prepared by
 The Ohio Department of Transportation
 Office of Technical Services
 Roadway Information

SCLISR00730**C

State True
Log

7

County True
Log



Surface Type & Width (Left / Right)

G 20'	G 18'	G 20'	G (8/9')
3.979 - 6.197	6.203 - 6.3		6.3 - 10.329

Base Type (Left / Right)

I
0 - 10.972

Shoulder Type & Width (Left / Right)

5 (4/4')	5 (2/2')	2 (3/3')	2 (1/1')
3.979 - 6.197	6.197 - 6.203	6.203 - 6.3	6.3 - 10.329

Through Lanes

2
0 - 11.426

Street Name

SR 730
0 - 10.075

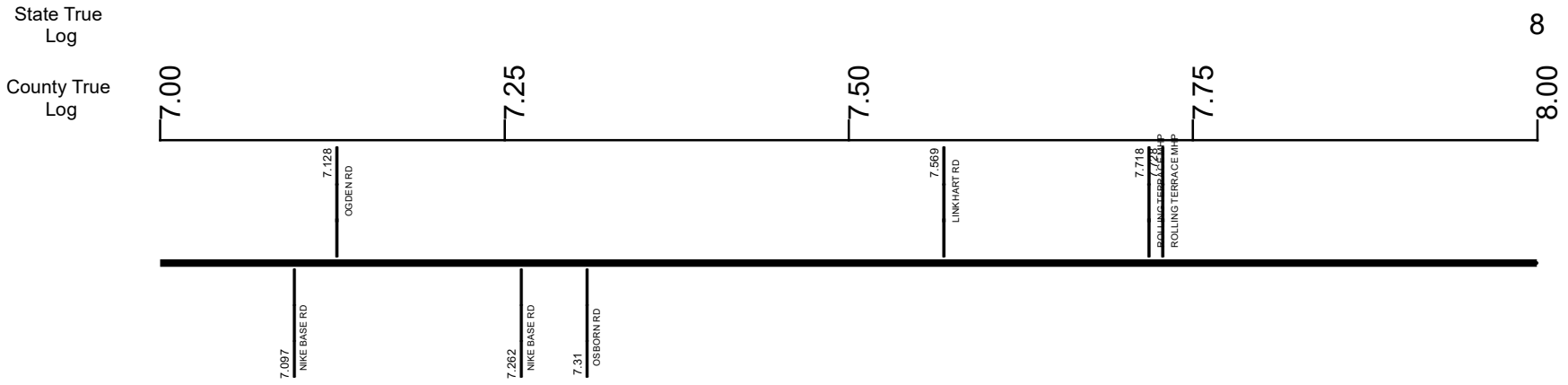
- Non-divided Highway
- Divided Highway
- Secondary Segment
- Corporation
- Bridge (on route)
- Underpass
- Overpass
- Railroad (at grade)
- Railroad (underpass)
- Railroad (overpass)
- Intersection

Created on: 6/24/2025

transportation.ohio.gov

Prepared by
The Ohio Department of Transportation
Office of Technical Services
Roadway Information

SCLISR00730**C



Surface Type & Width (Left / Right)	G (8'/9')
	6.3 - 10.329
Base Type (Left / Right)	I
	0 - 10.972
Shoulder Type & Width (Left / Right)	2 (1'/1')
	6.3 - 10.329
Through Lanes	2
	0 - 11.426
Street Name	SR 730
	0 - 10.075

Non-divided Highway	Bridge (on route)	Railroad (at grade)	Intersection
Divided Highway	Underpass	Railroad (underpass)	
Secondary Segment	Overpass	Railroad (overpass)	
Corporation			

Created on: 6/24/2025



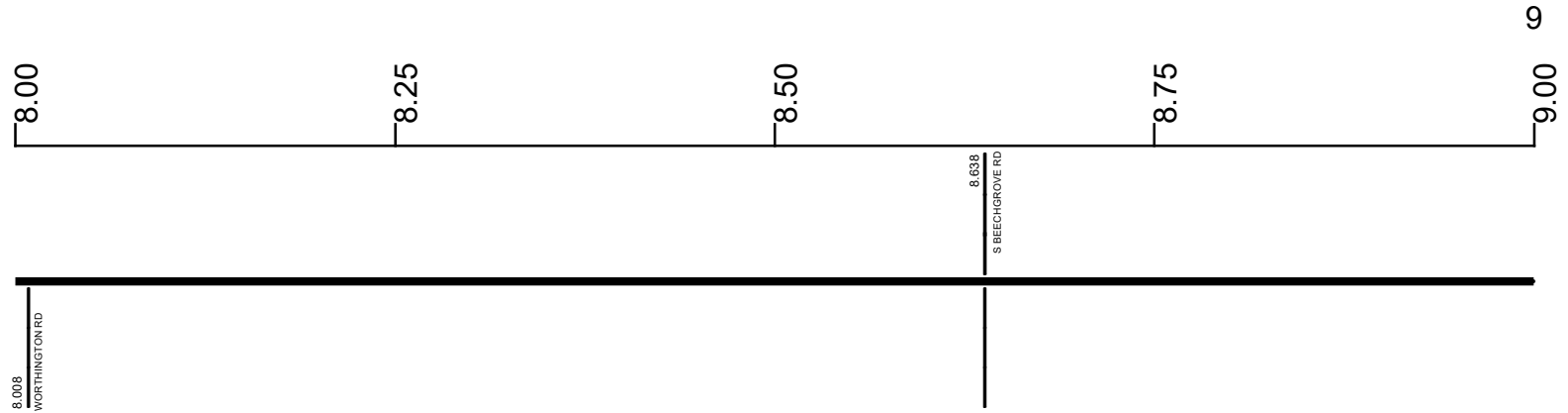
transportation.ohio.gov

Prepared by
The Ohio Department of Transportation
Office of Technical Services
Roadway Information

SCLISR00730**C

State True Log

County True Log



Surface Type & Width (Left / Right)	G (8'/9')
	6.3 - 10.329
Base Type (Left / Right)	I
	0 - 10.972
Shoulder Type & Width (Left / Right)	2 (1'/1')
	6.3 - 10.329
Through Lanes	2
	0 - 11.426
Street Name	SR 730
	0 - 10.075

- Non-divided Highway
- Divided Highway
- Secondary Segment
- Corporation
- Bridge (on route)
- Underpass
- Overpass
- Railroad (at grade)
- Railroad (underpass)
- Railroad (overpass)
- Intersection

Created on: 6/24/2025

transportation.ohio.gov

Prepared by
The Ohio Department of Transportation
Office of Technical Services
Roadway Information

SCLISR00730**C

State True Log

10

County True Log

9.00

9.25

9.50

9.75

10.00



Surface Type & Width (Left / Right)

	G (8/9')
	6.3 - 10.329

Base Type (Left / Right)

	I
	0 - 10.972

Shoulder Type & Width (Left / Right)

	2 (1/1')
	6.3 - 10.329

Through Lanes

	2
	0 - 11.426

Street Name

	SR 730
	0 - 10.075

- | | | | |
|---------------------|-------------------|----------------------|--------------|
| Non-divided Highway | Bridge (on route) | Railroad (at grade) | Intersection |
| Divided Highway | Underpass | Railroad (underpass) | |
| Secondary Segment | Overpass | Railroad (overpass) | |
| Corporation | | | |

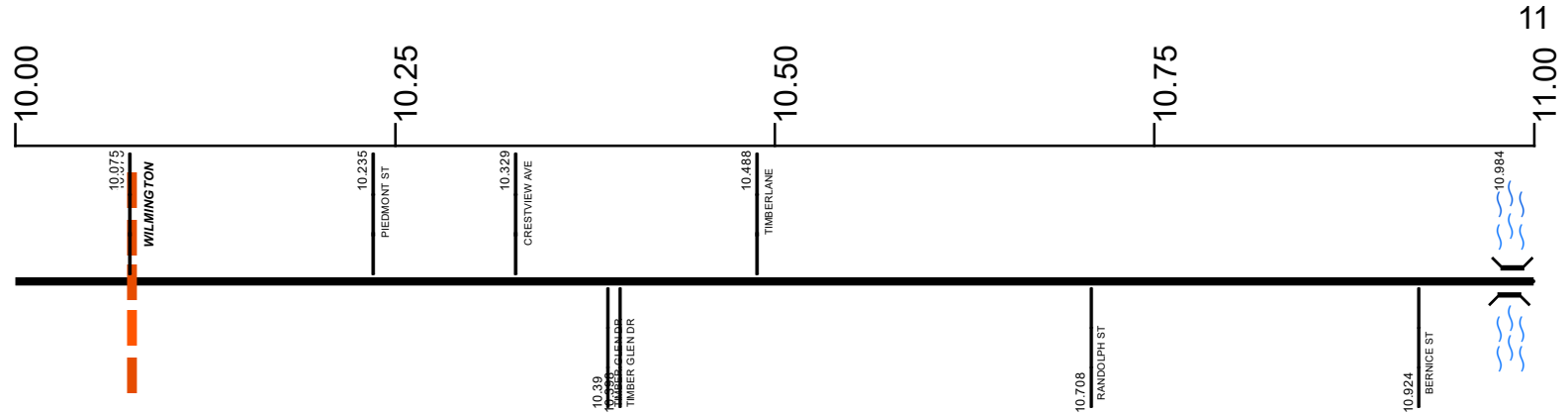
Created on: 6/24/2025

transportation.ohio.gov

Prepared by
The Ohio Department of Transportation
Office of Technical Services
Roadway Information

SCLISR00730**C

State True Log
County True Log



Surface Type & Width (Left / Right)

G (8'/9')	G 28'	G 18'	G 28'	G (12'/13')
6.3 - 10.329	10.329 - 10.488	10.488 - 10.708	10.708 - 10.924	10.924 - 11.151

Base Type (Left / Right)

I	L
0 - 10.972	10.972 - 11.012

Shoulder Type & Width (Left / Right)

2 (1'/1')	2 (3'/3')	2 (1'/1')	1 (1'/0')	2 (8'/8')
6.3 - 10.329	10.329 - 10.488	10.488 - 10.708	10.708 - 10.924	10.924 - 11.012

Through Lanes

2
0 - 11.426

Street Name

SR 730	W TRUESDELL ST
0 - 10.075	10.075 - 11.426

- Non-divided Highway
- Divided Highway
- Secondary Segment
- Corporation
- Bridge (on route)
- Underpass
- Overpass
- Railroad (at grade)
- Railroad (underpass)
- Railroad (overpass)
- Intersection

Created on: 6/24/2025

transportation.ohio.gov

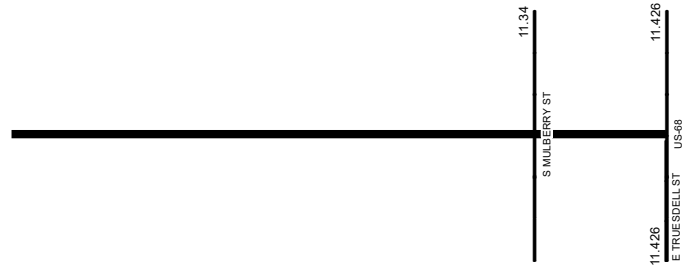
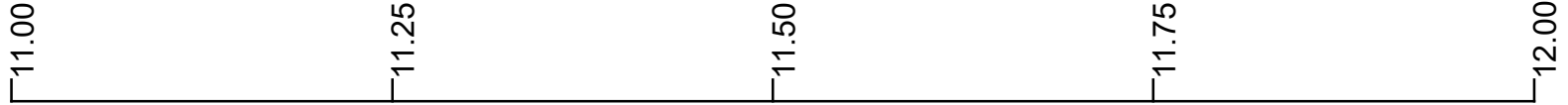
Prepared by
The Ohio Department of Transportation
Office of Technical Services
Roadway Information

SCLISR00730**C

11.426

State True Log

County True Log



Surface Type & Width (Left / Right)

G (12'/13')	G 36'
10.924 - 11.151	11.151 - 11.426

Base Type (Left / Right)

L	I	K
10.972 - 11.012	11.012 - 11.151	11.151 - 11.426

Shoulder Type & Width (Left / Right)

2 (8/8')	2 (2/2')	1 (0'/0')
10.924 - 11.012	11.012 - 11.151	11.151 - 11.426

Through Lanes

2
0 - 11.426

Street Name

W TRUESDELL ST
10.075 - 11.426

- Non-divided Highway
- Divided Highway
- Secondary Segment
- Corporation
- Bridge (on route)
- Underpass
- Overpass
- Railroad (at grade)
- Railroad (underpass)
- Railroad (overpass)
- Intersection

Created on: 6/24/2025

transportation.ohio.gov
 Prepared by
 The Ohio Department of Transportation
 Office of Technical Services
 Roadway Information

Historical Project List for SCLISR00730**C

Begin Measure	End Measure	Project ID Number	Construction Completion Date	Treatment Category	Treatment Type
0.000	10.066	84352	6-2010	Minor Rehabilitation	60-AC Overlay w/Rpr
6.218	10.076	102536	11-2019	Preventive Maintenance	31-DbI Appl Micro
10.076	11.426	94260	10-2016	Minor Rehabilitation	50-AC Overlay w/o Rpr

Roadway Codes

Access Control Journalized

- F - Full Access Control
- L - Limited Access Control
- N - No Access Control

Access Control Operational

- 1 - Full Access Control
- 2 - Partial Access Control
- 3 - No Access Control

Base Type

- F - Crack and Seat
- H - Rubblize and Roll
- I - Aggregate Base 304 or Traffic Compacted
- K - Water Bound Macadam
- L - Bituminous Concrete Mix or Penetration Macadam
- N - Plain Concrete
- P - Reinforced Concrete
- R - Brick (Flexible)
- T - Brick (Rigid)

Direction of Travel

- B - Both (Two-way)
- F - One-way Cardinal
- T - One-way Non-cardinal

Facility Type

- 1 - One-way Roadway
- 2 - Two-way Roadway
- 4 - Ramp
- 5 - Non-mainline
- 6 - Non-inventory Direction
- 7 - Planned / Unbuilt

Historical Federal Aid Indicator

- N - Not a FAP Route
- Y - FAP Route

Functional Classification

- 01 - Interstate
- 02 - Principal Arterial (Freeways)
- 03 - Principal Arterial (Other)
- 04 - Minor Arterial
- 05 - Major Collector
- 06 - Minor Collector
- 07 - Local

Leave / Reenter Indicator

- Y - Route leaves/reenters at this point
- N - Route does not leave/reenter at this point

Median Type

- 1 - None
- 2 - Unprotected
- 3 - Curbed
- 4 - Positive Barrier (Unspecified)
- 5 - Positive Barrier (Flexible)
- 6 - Positive Barrier (Semi-rigid)
- 7 - Positive Barrier (Rigid)

NHS

- N - National Highway System
- H - Congressional Corridor
- 2 - Major Airport
- 3 - Major Port Facility
- 4 - Major Amtrak Station
- 5 - Major Rail / Truck Terminal
- 6 - Major Intercity Bus Terminal
- 7 - Major Public Transit / Multi-modal Passenger Terminal
- 8 - Major Pipeline Terminal
- 9 - Major Ferry Terminal

Priority System

- G - General
- P - Priority System
- U - Urban

Scenic Byway Code

- A - All American Road
- N - National Scenic Byway
- S - State Scenic Byway

Shoulder Type

- 1 - None
- 2 - Surfaced shoulder exists (bituminous concrete {AC})
- 3 - Surfaced shoulder exists (Portland Cement Concrete {PCC})
- 4 - Stabilized shoulder exists (gravel or other granular material)
- 5 - Combination shoulder exists (two or more surface types)
- 6 - Earth shoulder exists
- 7 - Barrier curb exists; no shoulder in front of curb

Surface Type

- A - Combination
- B - Brick
- C - Continuous Reinforced Concrete
- D - Reinforced Concrete
- E - Plain Concrete
- G - Bituminous Concrete
- I - Chipseal on Granular
- K - Open Graded Bituminous
- L - Chipseal or Micro
- M - Gravel
- U - Unimproved
- X - Right of Way Only