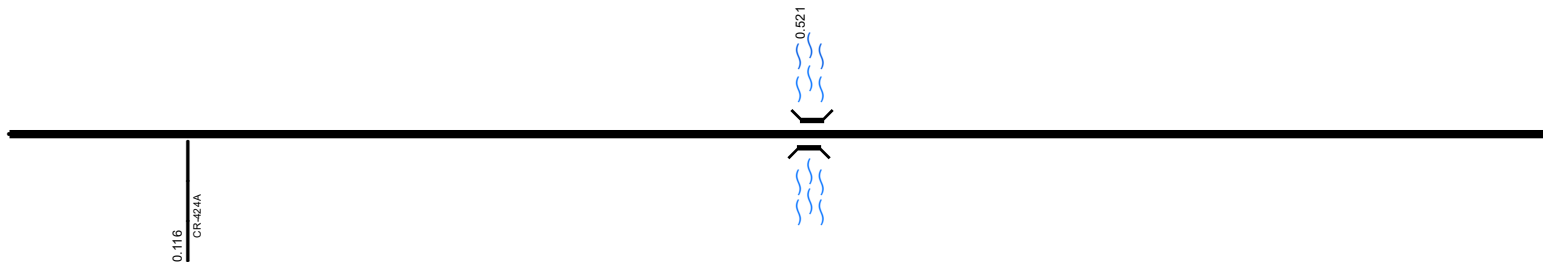


# SDEFUS00127\*\*C

State True Log 156.932

157.932

County True Log



**Surface Type & Width (Left / Right)**

G 24' 0 - 0.301	G (22'2') 0.301 - 2.154
--------------------	----------------------------

**Base Type (Left / Right)**

I 0 - 0.301	P / L 0.301 - 2.154
----------------	------------------------

**Shoulder Type & Width (Left / Right)**

	2 (8/8) 0 - 2.154
--	----------------------

**Resurface Year**

2024
------

0.301 - 0.621

**Through Lanes**

	2 0 - 2.379
--	----------------

**Street Name**

	US 127 0 - 2.154
--	---------------------

- Non-divided Highway
  Bridge (on route)
  Railroad (at grade)
  Intersection
- Divided Highway
  Underpass
  Railroad (underpass)
- Secondary Segment
  Overpass
  Railroad (overpass)
- Corporation**

Created on: 6/23/2025

transportation.ohio.gov

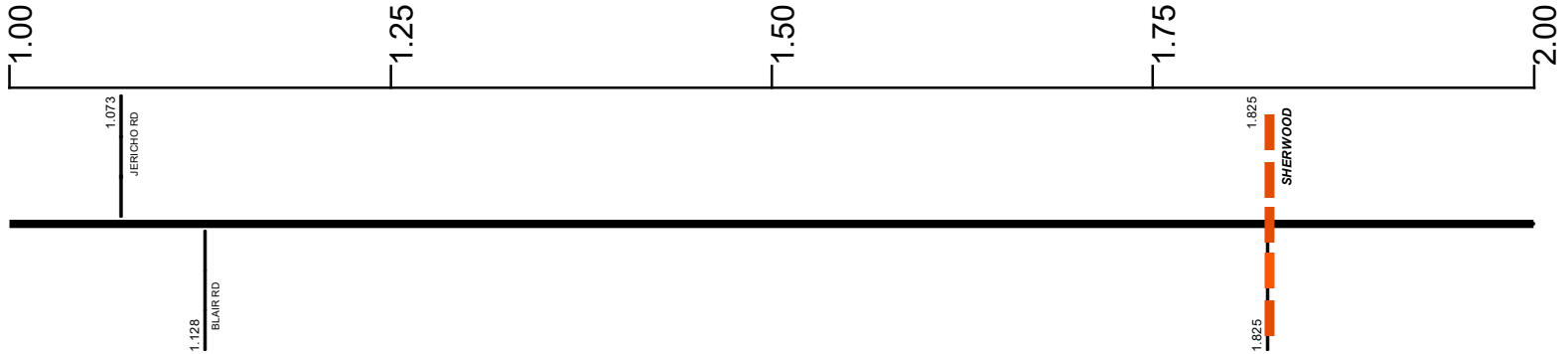
Prepared by  
The Ohio Department of Transportation  
Office of Technical Services  
Roadway Information

# SDEFUS00127\*\*C

State True Log

158.932

County True Log



Surface Type & Width (Left / Right)

G (22'/2')  
0.301 - 2.154

Base Type (Left / Right)

P / L  
0.301 - 2.154

Shoulder Type & Width (Left / Right)

2 (8'/8')  
0 - 2.154

Through Lanes

2  
0 - 2.379

Street Name

US 127  
0 - 2.154

- |                     |                   |                      |              |
|---------------------|-------------------|----------------------|--------------|
| Non-divided Highway | Bridge (on route) | Railroad (at grade)  | Intersection |
| Divided Highway     | Underpass         | Railroad (underpass) |              |
| Secondary Segment   | Overpass          | Railroad (overpass)  |              |
| Corporation         |                   |                      |              |

Created on: 6/23/2025



transportation.ohio.gov

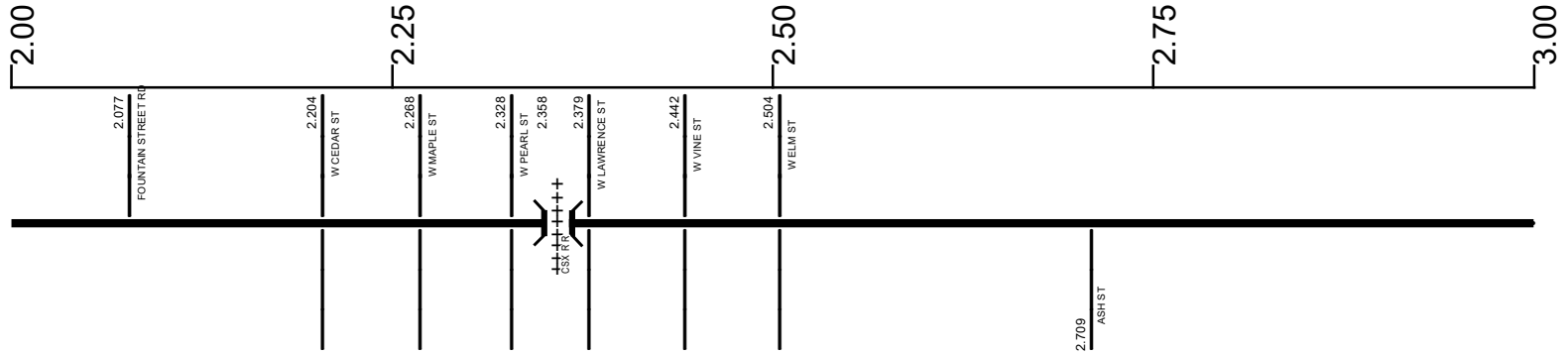
Prepared by  
The Ohio Department of Transportation  
Office of Technical Services  
Roadway Information

# SDEFUS00127\*\*C

State True Log

159.932

County True Log



**Surface Type & Width (Left / Right)**

G (22'/2')	G 28'	G (47'/17')	G 28'
0.301 - 2.154	2.154 - 2.379	2.379 - 2.504	2.504 - 3.081

**Base Type (Left / Right)**

P / L	N	N / L	N
0.301 - 2.154	2.154 - 2.379	2.379 - 2.504	2.504 - 3.081

**Shoulder Type & Width (Left / Right)**

2 (8'/8')	1 (0'/0')
0 - 2.154	2.154 - 3.081

**Resurface Year**

2024
2.379 - 3.42

**Through Lanes**

2	4	2
0 - 2.379	2.379 - 2.504	2.504 - 12.158

**Street Name**

US 127	HARRISON ST
0 - 2.154	2.154 - 3.081

- Non-divided Highway
- Divided Highway
- Secondary Segment
- Corporation
- Bridge (on route)
- Underpass
- Overpass
- Railroad (at grade)
- Railroad (underpass)
- Railroad (overpass)
- Intersection

Created on: 6/23/2025

transportation.ohio.gov

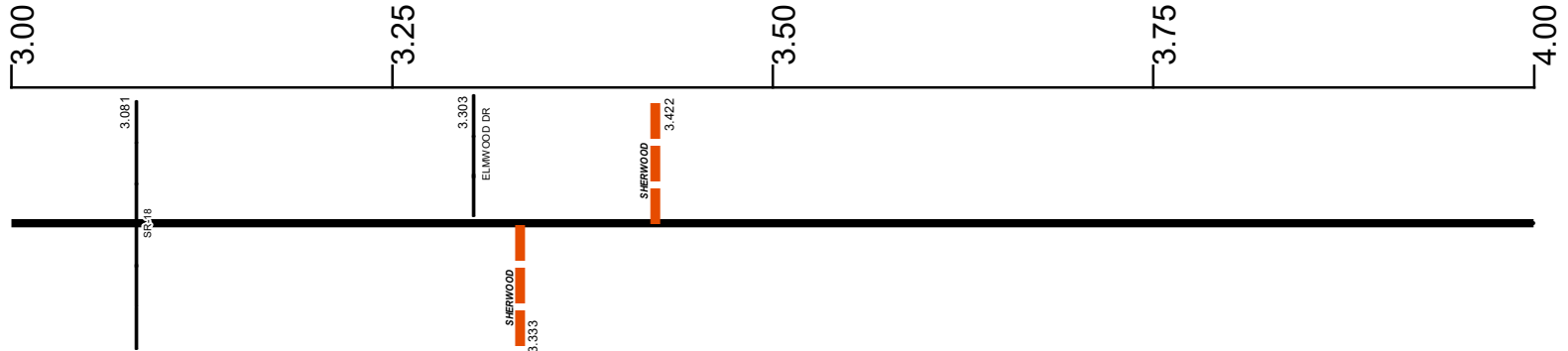
Prepared by  
The Ohio Department of Transportation  
Office of Technical Services  
Roadway Information

# SDEFUS00127\*\*C

State True Log

160.932

County True Log



**Surface Type & Width (Left / Right)**

G 28' 2.504 - 3.081	G (18'4') 3.081 - 9.107
------------------------	----------------------------

**Base Type (Left / Right)**

N 2.504 - 3.081	N / L 3.081 - 12.158
--------------------	-------------------------

**Shoulder Type & Width (Left / Right)**

1 (0'0') 2.154 - 3.081	2 (8'8') 3.081 - 9.107
---------------------------	---------------------------

**Resurface Year**

2024	2.379 - 3.42
------	--------------

**Through Lanes**

2	2.504 - 12.158
---	----------------

**Street Name**

HARRISON ST 2.154 - 3.081	N HARRISON ST 3.081 - 3.333	US 127 3.333 - 12.158
------------------------------	--------------------------------	--------------------------

- Non-divided Highway
- Divided Highway
- Secondary Segment
- Corporation
- Bridge (on route)
- Underpass
- Overpass
- Railroad (at grade)
- Railroad (underpass)
- Railroad (overpass)
- Intersection

Created on: 6/23/2025

transportation.ohio.gov

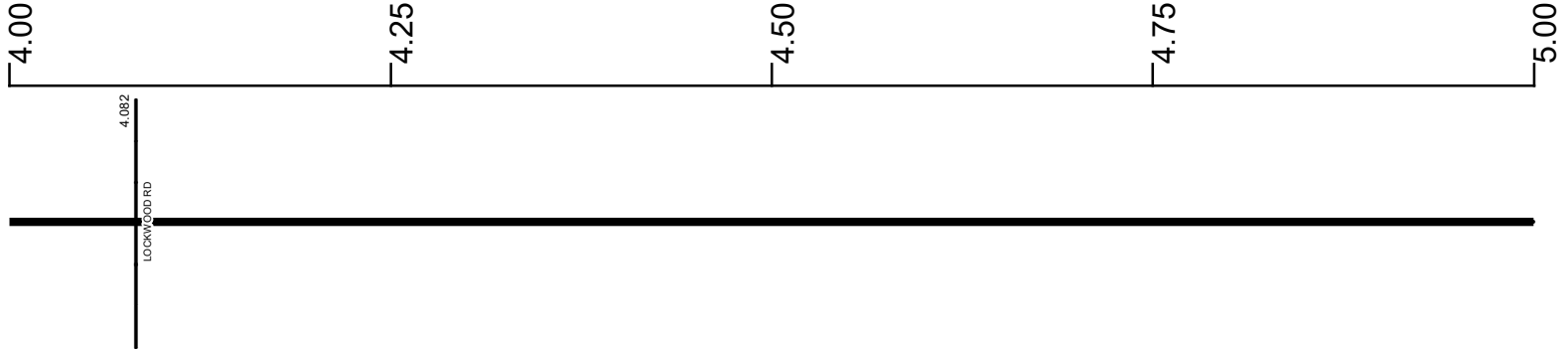
Prepared by  
The Ohio Department of Transportation  
Office of Technical Services  
Roadway Information

# SDEFUS00127\*\*C

State True Log

161.932

County True Log



Surface Type & Width (Left / Right)

	G (18/4')
	3.081 - 9.107

Base Type (Left / Right)

	N / L
	3.081 - 12.158

Shoulder Type & Width (Left / Right)

	2 (8/8')
	3.081 - 9.107

Through Lanes

	2
	2.504 - 12.158

Street Name

	US 127
	3.333 - 12.158

- |  |   |   |   |
|--|---|---|---|
| <ul style="list-style-type: none"> <li> Non-divided Highway</li> <li> Divided Highway</li> <li> Secondary Segment</li> <li> Corporation</li> </ul> | <ul style="list-style-type: none"> <li> Bridge (on route)</li> <li> Underpass</li> <li> Overpass</li> </ul> | <ul style="list-style-type: none"> <li> Railroad (at grade)</li> <li> Railroad (underpass)</li> <li> Railroad (overpass)</li> </ul> | <ul style="list-style-type: none"> <li> Intersection</li> </ul> |
|--|---|---|---|

Created on: 6/23/2025

transportation.ohio.gov

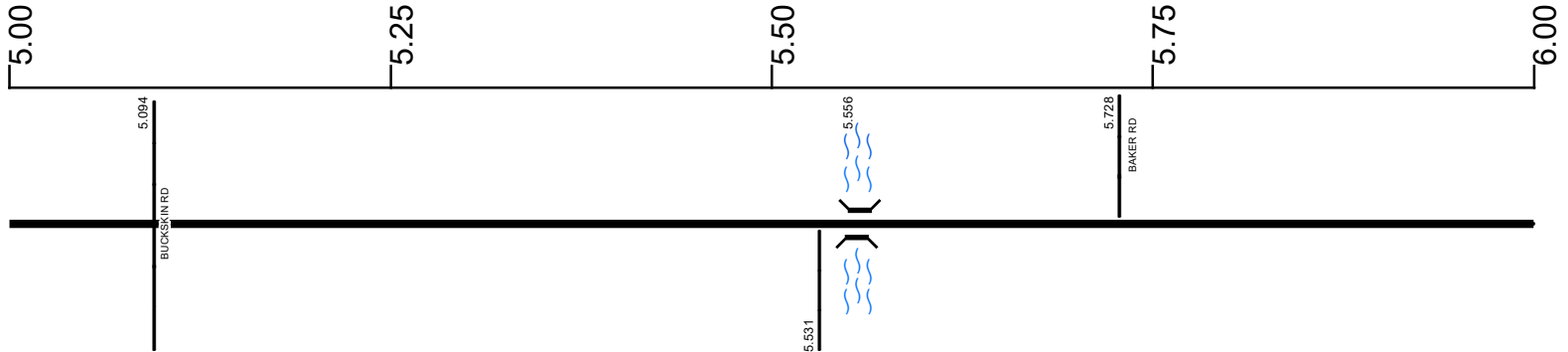
Prepared by  
The Ohio Department of Transportation  
Office of Technical Services  
Roadway Information

# SDEFUS00127\*\*C

State True Log

162.932

County True Log



Surface Type & Width (Left / Right)

G (18'/4')  
3.081 - 9.107

Base Type (Left / Right)

N / L  
3.081 - 12.158

Shoulder Type & Width (Left / Right)

2 (8'/8')  
3.081 - 9.107

Through Lanes

2  
2.504 - 12.158

Street Name

US 127  
3.333 - 12.158

- Non-divided Highway
- Divided Highway
- Secondary Segment
- Corporation
- Bridge (on route)
- Underpass
- Overpass
- Railroad (at grade)
- Railroad (underpass)
- Railroad (overpass)
- Intersection

Created on: 6/23/2025

transportation.ohio.gov

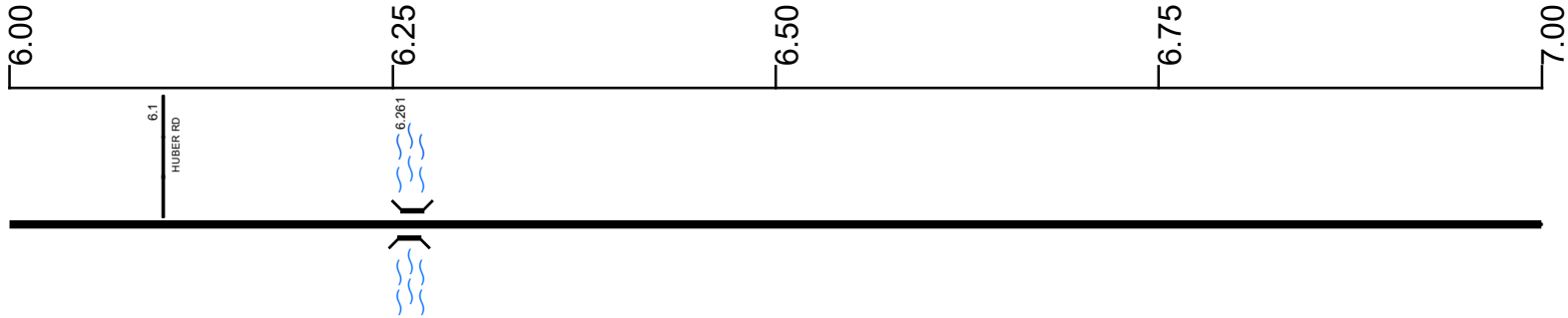
Prepared by  
 The Ohio Department of Transportation  
 Office of Technical Services  
 Roadway Information

# SDEFUS00127\*\*C

State True Log

163.932

County True Log



Surface Type & Width (Left / Right)

	G (18'/4')
	3.081 - 9.107

Base Type (Left / Right)

	N / L
	3.081 - 12.158

Shoulder Type & Width (Left / Right)

	2 (8'/8')
	3.081 - 9.107

Through Lanes

	2
	2.504 - 12.158

Street Name

	US 127
	3.333 - 12.158

- |                     |                   |                      |              |
|---------------------|-------------------|----------------------|--------------|
| Non-divided Highway | Bridge (on route) | Railroad (at grade)  | Intersection |
| Divided Highway     | Underpass         | Railroad (underpass) |              |
| Secondary Segment   | Overpass          | Railroad (overpass)  |              |
| <b>Corporation</b>  |                   |                      |              |

Created on: 6/23/2025

transportation.ohio.gov

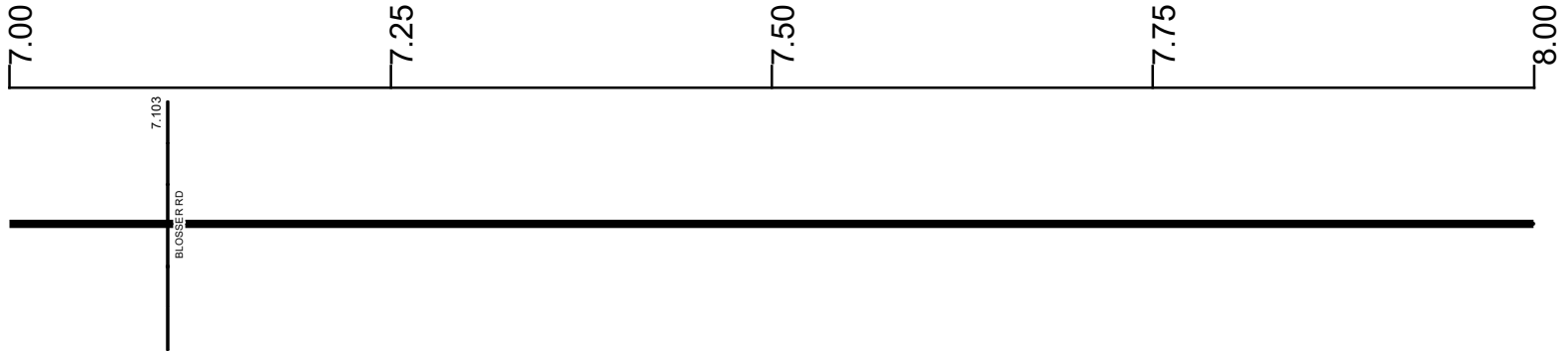
Prepared by  
The Ohio Department of Transportation  
Office of Technical Services  
Roadway Information

# SDEFUS00127\*\*C

State True Log

164.932

County True Log



Surface Type & Width (Left / Right)

G (18'/4')  
3.081 - 9.107

Base Type (Left / Right)

N / L  
3.081 - 12.158

Shoulder Type & Width (Left / Right)

2 (8'/8')  
3.081 - 9.107

Through Lanes

2  
2.504 - 12.158

Street Name

US 127  
3.333 - 12.158

- |                     |                   |                      |              |
|---------------------|-------------------|----------------------|--------------|
| Non-divided Highway | Bridge (on route) | Railroad (at grade)  | Intersection |
| Divided Highway     | Underpass         | Railroad (underpass) |              |
| Secondary Segment   | Overpass          | Railroad (overpass)  |              |
| Corporation         |                   |                      |              |

Created on: 6/23/2025

transportation.ohio.gov

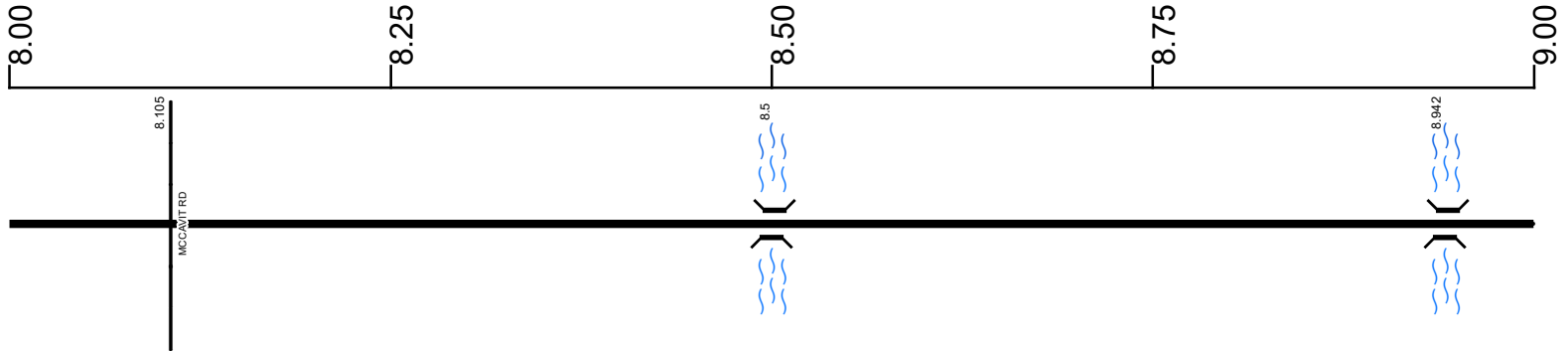
Prepared by  
The Ohio Department of Transportation  
Office of Technical Services  
Roadway Information

# SDEFUS00127\*\*C

State True Log

165.932

County True Log



Surface Type & Width (Left / Right)

	G (18'/4')
	3.081 - 9.107

Base Type (Left / Right)

	N / L
	3.081 - 12.158

Shoulder Type & Width (Left / Right)

	2 (8'/8')
	3.081 - 9.107

Through Lanes

	2
	2.504 - 12.158

Street Name

	US 127
	3.333 - 12.158

- |  |   |   |   |
|--|---|---|---|
| <ul style="list-style-type: none"> <li> Non-divided Highway</li> <li> Divided Highway</li> <li> Secondary Segment</li> <li> Corporation</li> </ul> | <ul style="list-style-type: none"> <li> Bridge (on route)</li> <li> Underpass</li> <li> Overpass</li> </ul> | <ul style="list-style-type: none"> <li> Railroad (at grade)</li> <li> Railroad (underpass)</li> <li> Railroad (overpass)</li> </ul> | <ul style="list-style-type: none"> <li> Intersection</li> </ul> |
|--|---|---|---|

Created on: 6/23/2025

transportation.ohio.gov

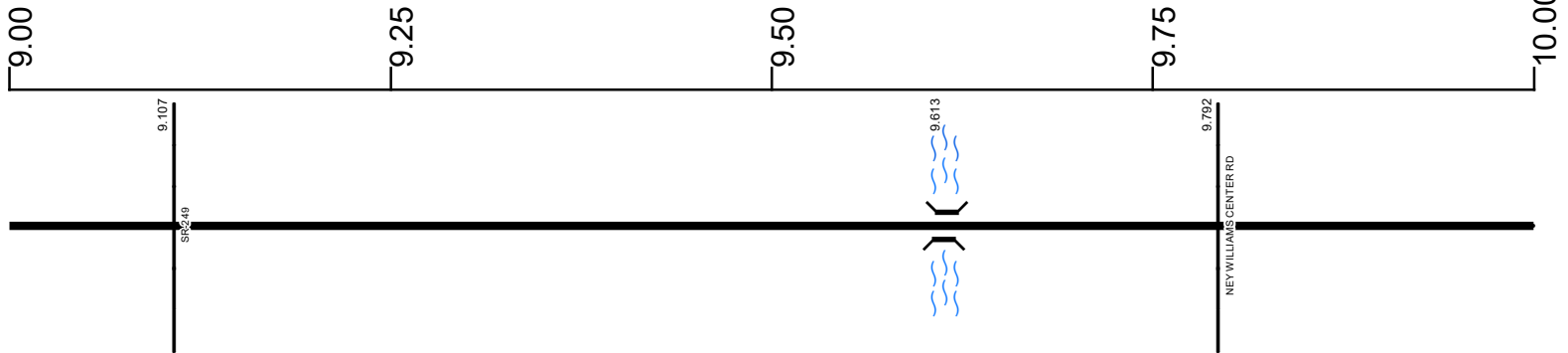
Prepared by  
The Ohio Department of Transportation  
Office of Technical Services  
Roadway Information

# SDEFUS00127\*\*C

State True Log

166.932

County True Log



**Surface Type & Width (Left / Right)**

G (18'4") 3.081 - 9.107	G (20'4") 9.107 - 12.158
----------------------------	-----------------------------

**Base Type (Left / Right)**

N / L 3.081 - 12.158	
-------------------------	--

**Shoulder Type & Width (Left / Right)**

2 (8'8") 3.081 - 9.107	2 (4'4") 9.107 - 12.158
---------------------------	----------------------------

**Through Lanes**

2 2.504 - 12.158	
---------------------	--

**Street Name**

US 127 3.333 - 12.158	
--------------------------	--

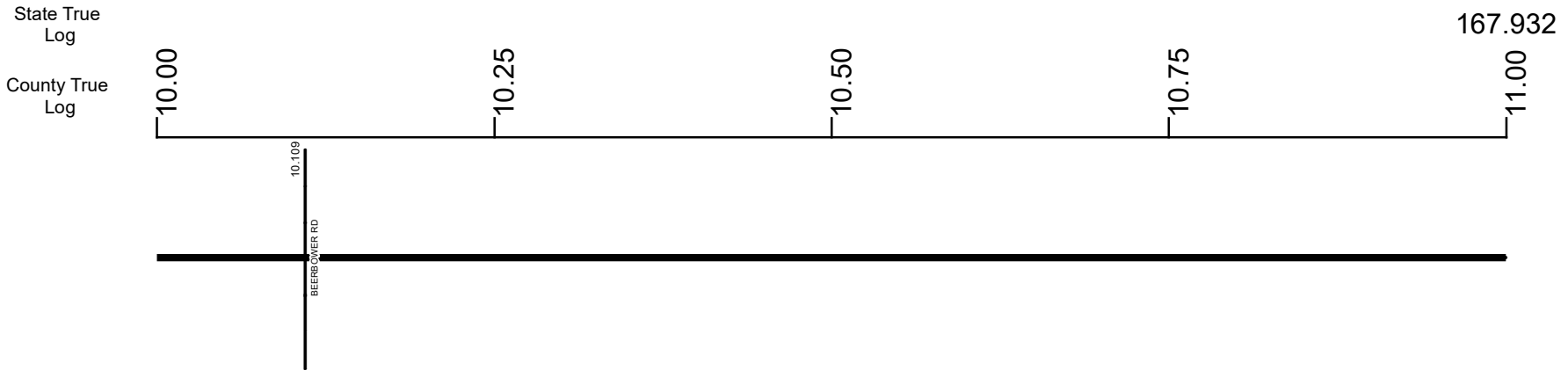
- |  |   |   |   |
|--|---|---|---|
| <ul style="list-style-type: none"> <li> Non-divided Highway</li> <li> Divided Highway</li> <li> Secondary Segment</li> <li> Corporation</li> </ul> | <ul style="list-style-type: none"> <li> Bridge (on route)</li> <li> Underpass</li> <li> Overpass</li> </ul> | <ul style="list-style-type: none"> <li> Railroad (at grade)</li> <li> Railroad (underpass)</li> <li> Railroad (overpass)</li> </ul> | <ul style="list-style-type: none"> <li> Intersection</li> </ul> |
|--|---|---|---|

Created on: 6/23/2025

transportation.ohio.gov

Prepared by  
The Ohio Department of Transportation  
Office of Technical Services  
Roadway Information

# SDEFUS00127\*\*C



Surface Type & Width (Left / Right)	G (20'4')
	9.107 - 12.158
Base Type (Left / Right)	N / L
	3.081 - 12.158
Shoulder Type & Width (Left / Right)	2 (4'4')
	9.107 - 12.158
Through Lanes	2
	2.504 - 12.158
Street Name	US 127
	3.333 - 12.158

- Non-divided Highway
- Divided Highway
- Secondary Segment
- Corporation
- Bridge (on route)
- Underpass
- Overpass
- Railroad (at grade)
- Railroad (underpass)
- Railroad (overpass)
- Intersection

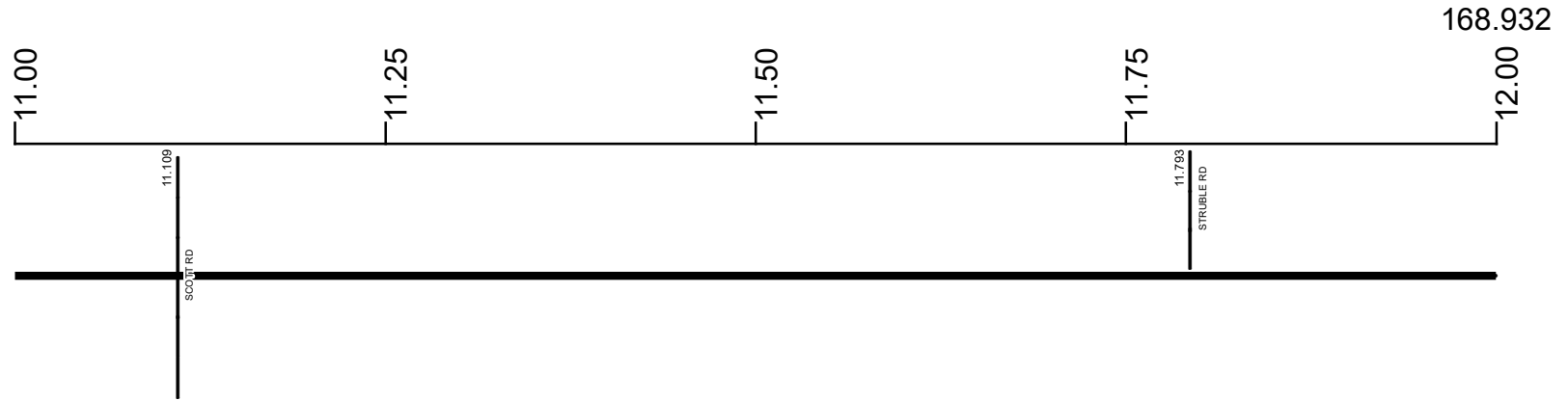
Created on: 6/23/2025

transportation.ohio.gov

Prepared by  
The Ohio Department of Transportation  
Office of Technical Services  
Roadway Information

# SDEFUS00127\*\*C

State True Log  
County True Log



**Surface Type & Width (Left / Right)**

G (20'4')  
9.107 - 12.158

**Base Type (Left / Right)**

N / L  
3.081 - 12.158

**Shoulder Type & Width (Left / Right)**

2 (4'4')  
9.107 - 12.158

**Through Lanes**

2  
2.504 - 12.158

**Street Name**

US 127  
3.333 - 12.158

- |                     |                   |                      |              |
|---------------------|-------------------|----------------------|--------------|
| Non-divided Highway | Bridge (on route) | Railroad (at grade)  | Intersection |
| Divided Highway     | Underpass         | Railroad (underpass) |              |
| Secondary Segment   | Overpass          | Railroad (overpass)  |              |
| Corporation         |                   |                      |              |

Created on: 6/23/2025



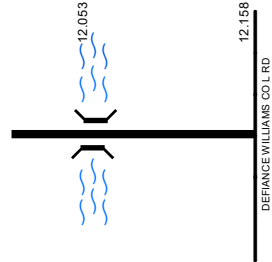
transportation.ohio.gov  
Prepared by  
The Ohio Department of Transportation  
Office of Technical Services  
Roadway Information

# SDEFUS00127\*\*C

State True Log

169.09

County True Log



**Surface Type & Width (Left / Right)**

G (20'/4')  
9.107 - 12.158

**Base Type (Left / Right)**

N / L  
3.081 - 12.158

**Shoulder Type & Width (Left / Right)**

2 (4'/4')  
9.107 - 12.158

**Through Lanes**

2  
2.504 - 12.158

**Street Name**

US 127  
3.333 - 12.158

- |                     |                   |                      |              |
|---------------------|-------------------|----------------------|--------------|
| Non-divided Highway | Bridge (on route) | Railroad (at grade)  | Intersection |
| Divided Highway     | Underpass         | Railroad (underpass) |              |
| Secondary Segment   | Overpass          | Railroad (overpass)  |              |
| Corporation         |                   |                      |              |

Created on: 6/23/2025



transportation.ohio.gov  
 Prepared by  
 The Ohio Department of Transportation  
 Office of Technical Services  
 Roadway Information

# Historical Project List for

Begin Measure	End Measure	Project ID Number	Construction Completion Date	Treatment Category	Treatment Type
---------------	-------------	-------------------	---------------------------------	--------------------	----------------

# Roadway Codes

## Access Control Journalized

- F - Full Access Control
- L - Limited Access Control
- N - No Access Control

## Access Control Operational

- 1 - Full Access Control
- 2 - Partial Access Control
- 3 - No Access Control

## Base Type

- F - Crack and Seat
- H - Rubblize and Roll
- I - Aggregate Base 304 or Traffic Compacted
- K - Water Bound Macadam
- L - Bituminous Concrete Mix or Penetration Macadam
- N - Plain Concrete
- P - Reinforced Concrete
- R - Brick (Flexible)
- T - Brick (Rigid)

## Direction of Travel

- B - Both (Two-way)
- F - One-way Cardinal
- T - One-way Non-cardinal

## Facility Type

- 1 - One-way Roadway
- 2 - Two-way Roadway
- 4 - Ramp
- 5 - Non-mainline
- 6 - Non-inventory Direction
- 7 - Planned / Unbuilt

## Historical Federal Aid Indicator

- N - Not a FAP Route
- Y - FAP Route

## Functional Classification

- 01 - Interstate
- 02 - Principal Arterial (Freeways)
- 03 - Principal Arterial (Other)
- 04 - Minor Arterial
- 05 - Major Collector
- 06 - Minor Collector
- 07 - Local

## Leave / Reenter Indicator

- Y - Route leaves/reenters at this point
- N - Route does not leave/reenter at this point

## Median Type

- 1 - None
- 2 - Unprotected
- 3 - Curbed
- 4 - Positive Barrier (Unspecified)
- 5 - Positive Barrier (Flexible)
- 6 - Positive Barrier (Semi-rigid)
- 7 - Positive Barrier (Rigid)

## NHS

- N - National Highway System
- H - Congressional Corridor
- 2 - Major Airport
- 3 - Major Port Facility
- 4 - Major Amtrak Station
- 5 - Major Rail / Truck Terminal
- 6 - Major Intercity Bus Terminal
- 7 - Major Public Transit / Multi-modal Passenger Terminal
- 8 - Major Pipeline Terminal
- 9 - Major Ferry Terminal

## Priority System

- G - General
- P - Priority System
- U - Urban

## Scenic Byway Code

- A - All American Road
- N - National Scenic Byway
- S - State Scenic Byway

## Shoulder Type

- 1 - None
- 2 - Surfaced shoulder exists (bituminous concrete {AC})
- 3 - Surfaced shoulder exists (Portland Cement Concrete {PCC})
- 4 - Stabilized shoulder exists (gravel or other granular material)
- 5 - Combination shoulder exists (two or more surface types)
- 6 - Earth shoulder exists
- 7 - Barrier curb exists; no shoulder in front of curb

## Surface Type

- A - Combination
- B - Brick
- C - Continuous Reinforced Concrete
- D - Reinforced Concrete
- E - Plain Concrete
- G - Bituminous Concrete
- I - Chipseal on Granular
- K - Open Graded Bituminous
- L - Chipseal or Micro
- M - Gravel
- U - Unimproved
- X - Right of Way Only