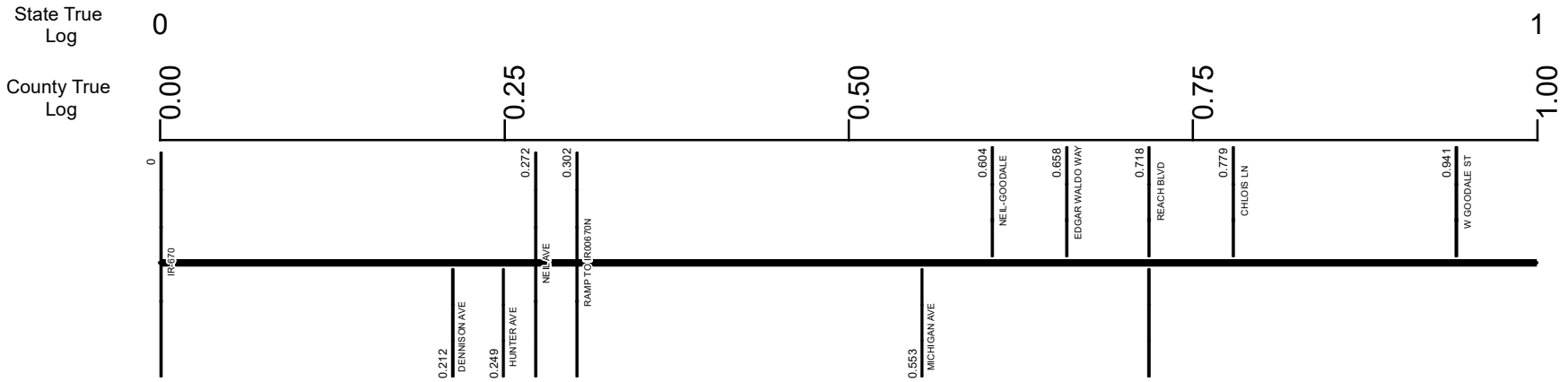


SFRASR00315*CC



Surface Type & Width (Left / Right)							
G 36'	G 42'	G 48'	G 36'	G 28'	G 48'	G 68'	G 82'
0 - 0.212	0.212 - 0.291	0.291 - 0.447	0.447 - 0.534	0.534 - 0.611	0.611 - 0.88	0.88 - 0.941	0.941 - 1.05
Base Type (Left / Right)							
N							L
0 - 0.941							0.941 - 1.117
Shoulder Type & Width (Left / Right)							
1 (0'/0')							
0 - 1.05							
Through Lanes							
2	3	4	3	2	4		
0 - 0.212	0.212 - 0.291	0.291 - 0.447	0.447 - 0.534	0.534 - 0.611	0.611 - 1.117		
Street Name							
SR 315C RAMP		W GOODALE ST				OLENTANGY RIVER RD	
0 - 0.212		0.212 - 0.941				0.941 - 1.05	

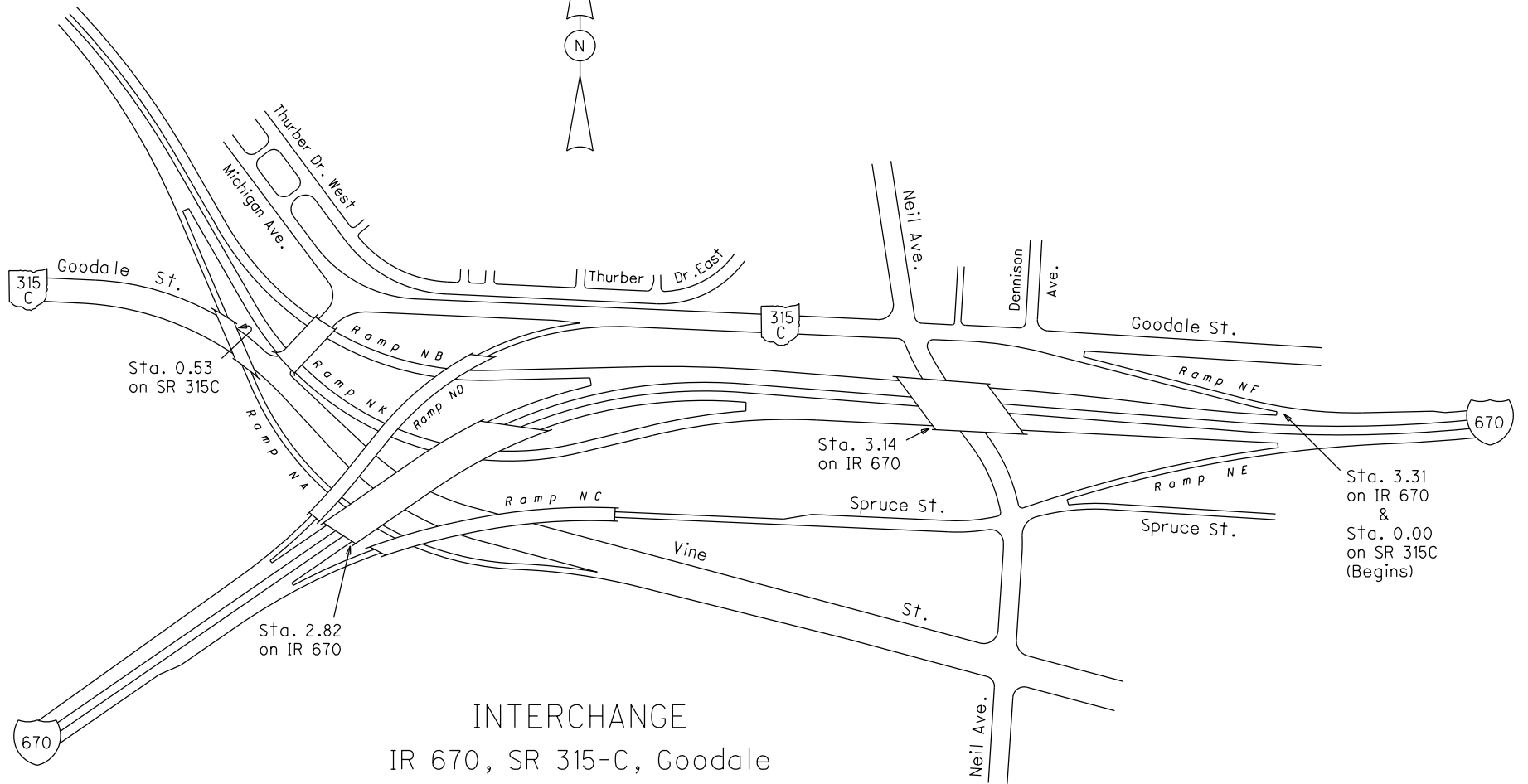
Non-divided Highway	Bridge (on route)	Railroad (at grade)	Intersection
Divided Highway	Underpass	Railroad (underpass)	
Secondary Segment	Overpass	Railroad (overpass)	
Corporation			

Created on: 6/27/2025

transportation.ohio.gov

Prepared by
The Ohio Department of Transportation
Office of Technical Services
Roadway Information

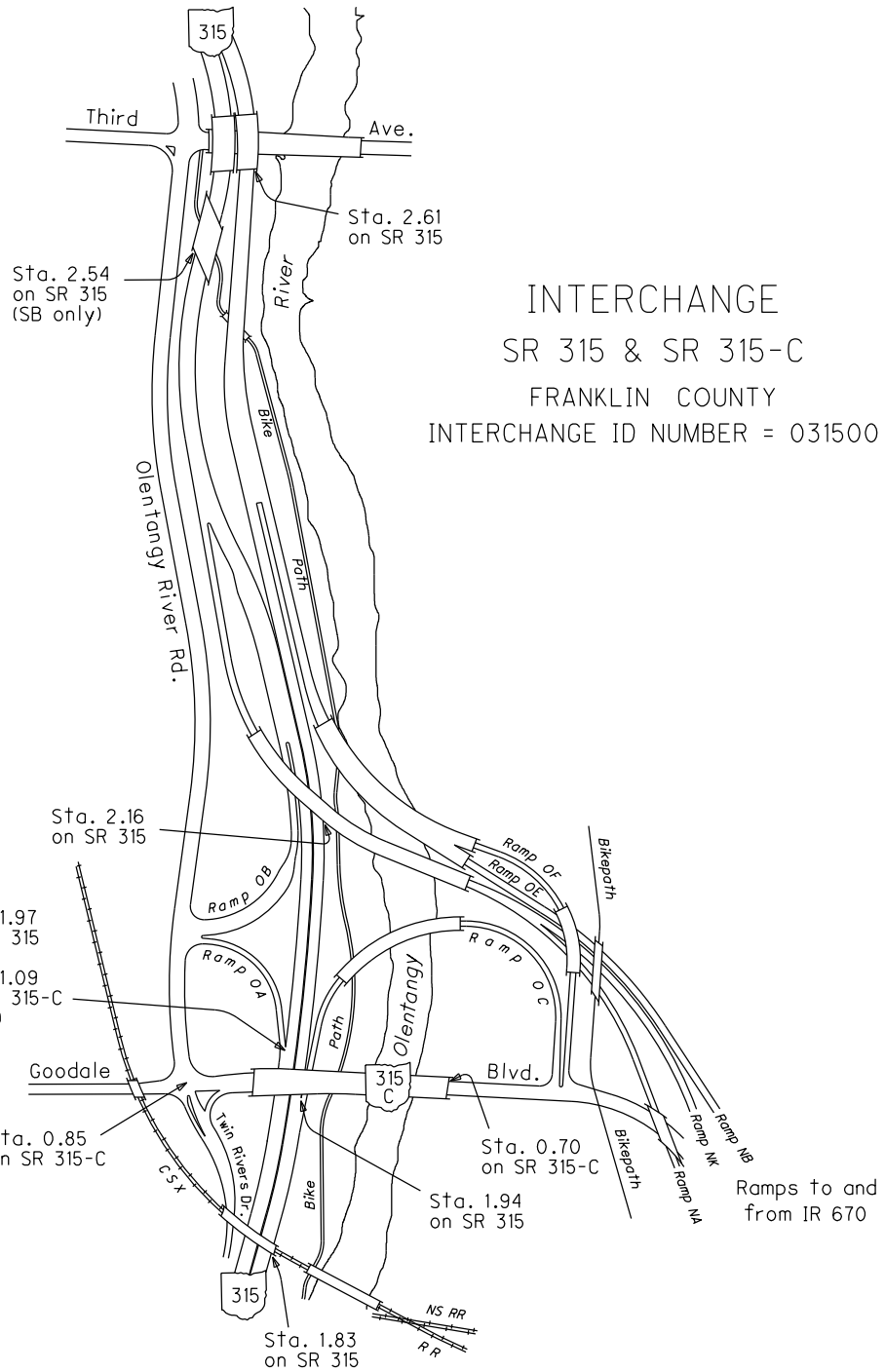
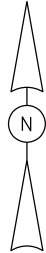
Ramps to and from SR 315



INTERCHANGE
 IR 670, SR 315-C, Goodale
 St. & Nationwide Blvd.
 FRANKLIN COUNTY
 INTERCHANGE ID NUMBER = 031600

IR 670 SHEET 2 OF 7
 IR 670 SHEET 3 OF 7
 SR 315C SHEET 1 OF 1

REVISED Jan 2004



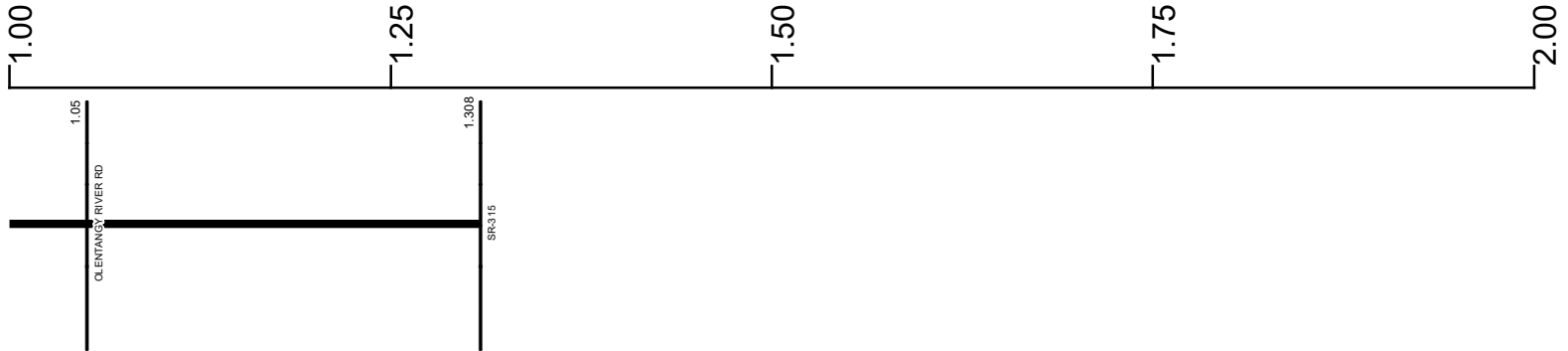
INTERCHANGE
SR 315 & SR 315-C
FRANKLIN COUNTY
INTERCHANGE ID NUMBER = 031500

SFRASR00315*CC

State True Log

1.308

County True Log



Surface Type & Width (Left / Right)

G 82'	G 32'
0.941 - 1.05	1.05 - 1.308

Base Type (Left / Right)

L	P
0.941 - 1.117	1.117 - 1.308

Shoulder Type & Width (Left / Right)

1 (0'/0')	2 (6'/6')
0 - 1.05	1.05 - 1.308

Through Lanes

4	2
0.611 - 1.117	1.117 - 1.308

Street Name

OLENTANGY RIVER RD	OLENTANGY RIVER RD TO SR 315 S RAMP
0.941 - 1.05	1.05 - 1.308

- | | | | |
|--|---|---|---|
| <ul style="list-style-type: none"> Non-divided Highway Divided Highway Secondary Segment Corporation | <ul style="list-style-type: none"> Bridge (on route) Underpass Overpass | <ul style="list-style-type: none"> Railroad (at grade) Railroad (underpass) Railroad (overpass) | <ul style="list-style-type: none"> Intersection |
|--|---|---|---|

Created on: 6/27/2025

transportation.ohio.gov

Prepared by
The Ohio Department of Transportation
Office of Technical Services
Roadway Information

Historical Project List for SFRASR00315**C

Begin Measure	End Measure	Project ID Number	Construction Completion Date	Treatment Category	Treatment Type
0.480	2.570	76420	6-2019	Minor Rehabilitation	60-AC Overlay w/Rpr
0.930	1.450	4668	4-2004	New Construction	200-New Pavement
2.400	5.220	24696	4-2011	Minor Rehabilitation	60-AC Overlay w/Rpr
5.180	11.770	25735	11-2016	Minor Rehabilitation	60-AC Overlay w/Rpr
10.610	12.540	76467	11-2018	Minor Rehabilitation	50-AC Overlay w/o Rpr
12.790	13.800	24592	7-2004	Minor Rehabilitation	60-AC Overlay w/Rpr
12.910	13.800	102513	10-2018	Minor Rehabilitation	60-AC Overlay w/Rpr

Roadway Codes

Access Control Journalized

- F - Full Access Control
- L - Limited Access Control
- N - No Access Control

Access Control Operational

- 1 - Full Access Control
- 2 - Partial Access Control
- 3 - No Access Control

Base Type

- F - Crack and Seat
- H - Rubblize and Roll
- I - Aggregate Base 304 or Traffic Compacted
- K - Water Bound Macadam
- L - Bituminous Concrete Mix or Penetration Macadam
- N - Plain Concrete
- P - Reinforced Concrete
- R - Brick (Flexible)
- T - Brick (Rigid)

Direction of Travel

- B - Both (Two-way)
- F - One-way Cardinal
- T - One-way Non-cardinal

Facility Type

- 1 - One-way Roadway
- 2 - Two-way Roadway
- 4 - Ramp
- 5 - Non-mainline
- 6 - Non-inventory Direction
- 7 - Planned / Unbuilt

Historical Federal Aid Indicator

- N - Not a FAP Route
- Y - FAP Route

Functional Classification

- 01 - Interstate
- 02 - Principal Arterial (Freeways)
- 03 - Principal Arterial (Other)
- 04 - Minor Arterial
- 05 - Major Collector
- 06 - Minor Collector
- 07 - Local

Leave / Reenter Indicator

- Y - Route leaves/reenters at this point
- N - Route does not leave/reenter at this point

Median Type

- 1 - None
- 2 - Unprotected
- 3 - Curbed
- 4 - Positive Barrier (Unspecified)
- 5 - Positive Barrier (Flexible)
- 6 - Positive Barrier (Semi-rigid)
- 7 - Positive Barrier (Rigid)

NHS

- N - National Highway System
- H - Congressional Corridor
- 2 - Major Airport
- 3 - Major Port Facility
- 4 - Major Amtrak Station
- 5 - Major Rail / Truck Terminal
- 6 - Major Intercity Bus Terminal
- 7 - Major Public Transit / Multi-modal Passenger Terminal
- 8 - Major Pipeline Terminal
- 9 - Major Ferry Terminal

Priority System

- G - General
- P - Priority System
- U - Urban

Scenic Byway Code

- A - All American Road
- N - National Scenic Byway
- S - State Scenic Byway

Shoulder Type

- 1 - None
- 2 - Surfaced shoulder exists (bituminous concrete {AC})
- 3 - Surfaced shoulder exists (Portland Cement Concrete {PCC})
- 4 - Stabilized shoulder exists (gravel or other granular material)
- 5 - Combination shoulder exists (two or more surface types)
- 6 - Earth shoulder exists
- 7 - Barrier curb exists; no shoulder in front of curb

Surface Type

- A - Combination
- B - Brick
- C - Continuous Reinforced Concrete
- D - Reinforced Concrete
- E - Plain Concrete
- G - Bituminous Concrete
- I - Chipseal on Granular
- K - Open Graded Bituminous
- L - Chipseal or Micro
- M - Gravel
- U - Unimproved
- X - Right of Way Only