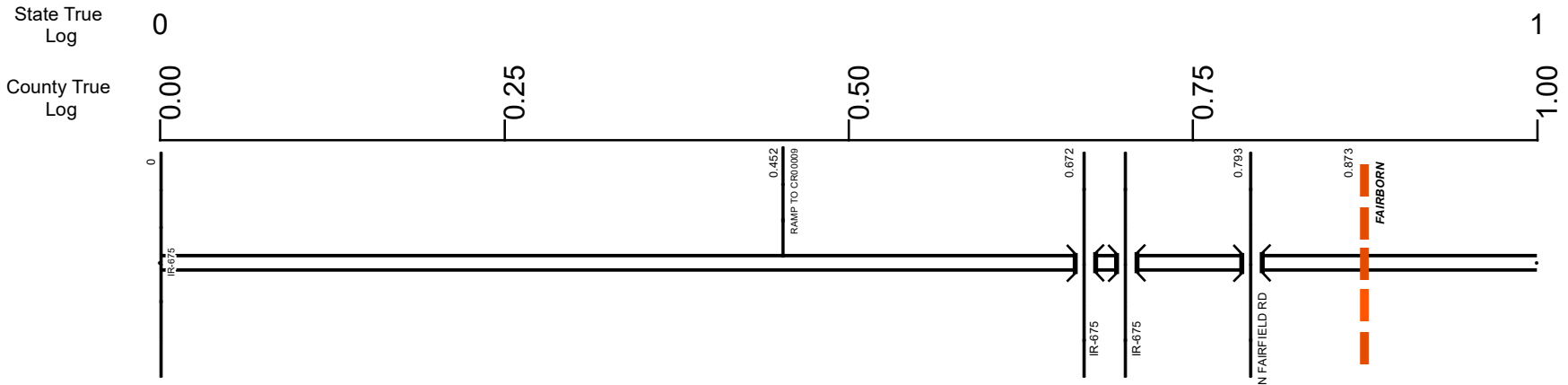


# SGRESR00844\*\*C



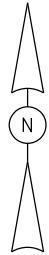
Surface Type & Width (Left / Right)	G 48' 0 - 2.353
Shoulder Type & Width (Left / Right)	5 (14'/14') 0 - 0.906
Median Type and Width	5 (12'/12') 0.906 - 2.353
Through Lanes	2 ( 9999' ) 0 - 0.47
	2 ( 58' ) 0.47 - 2.35
Street Name	4 0 - 2.395
	RAMP B 0 - 2.35

- |                     |                   |                      |              |
|---------------------|-------------------|----------------------|--------------|
| Non-divided Highway | Bridge (on route) | Railroad (at grade)  | Intersection |
| Divided Highway     | Underpass         | Railroad (underpass) |              |
| Secondary Segment   | Overpass          | Railroad (overpass)  |              |

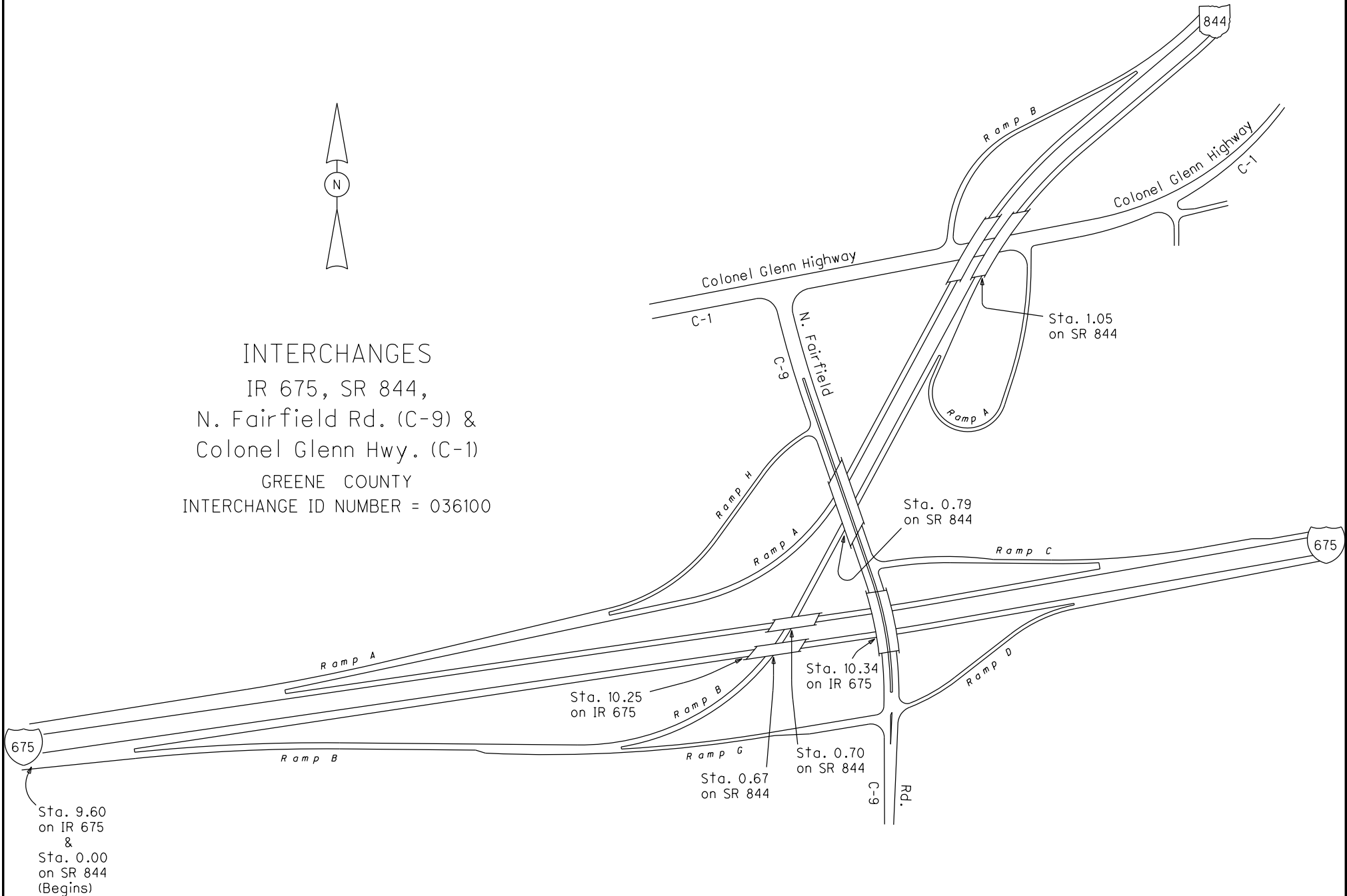
Created on: 6/27/2025

transportation.ohio.gov

Prepared by  
The Ohio Department of Transportation  
Office of Technical Services  
Roadway Information



INTERCHANGES  
IR 675, SR 844,  
N. Fairfield Rd. (C-9) &  
Colonel Glenn Hwy. (C-1)  
GREENE COUNTY  
INTERCHANGE ID NUMBER = 036100



IR675 SHEET 2 OF 4  
SR844 SHEET 1 OF 1

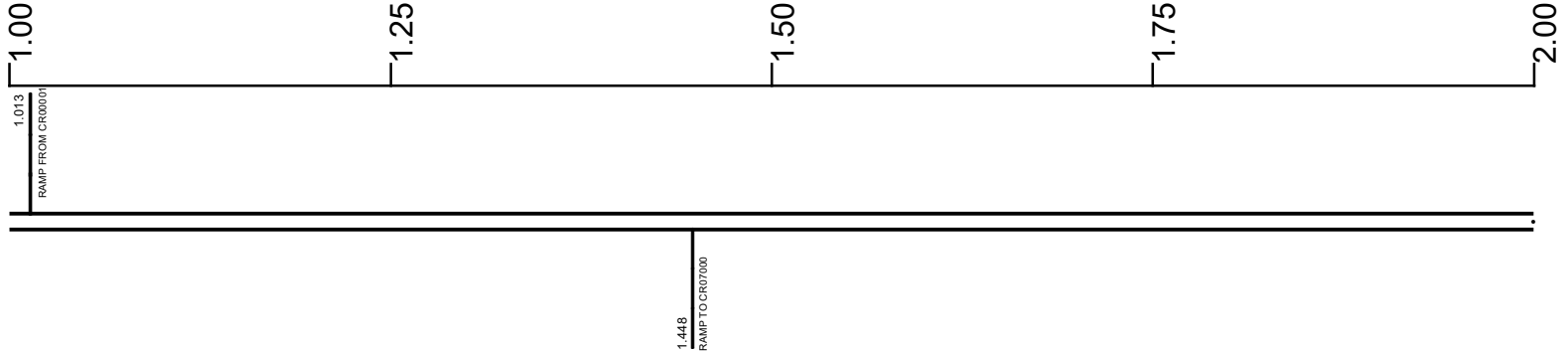
REVISED Jan 2010

# SGRESR00844\*\*C

State True Log

2

County True Log



Surface Type & Width (Left / Right)	G 48'
	0 - 2.353
Shoulder Type & Width (Left / Right)	5 (12'/12')
	0.906 - 2.353
Median Type and Width	2 ( 58' )
	0.47 - 2.35
Through Lanes	4
	0 - 2.395
Street Name	RAMP B
	0 - 2.35

Non-divided Highway	Bridge (on route)	Railroad (at grade)	Intersection
Divided Highway	Underpass	Railroad (underpass)	
Secondary Segment	Overpass	Railroad (overpass)	
Corporation			

Created on: 6/27/2025



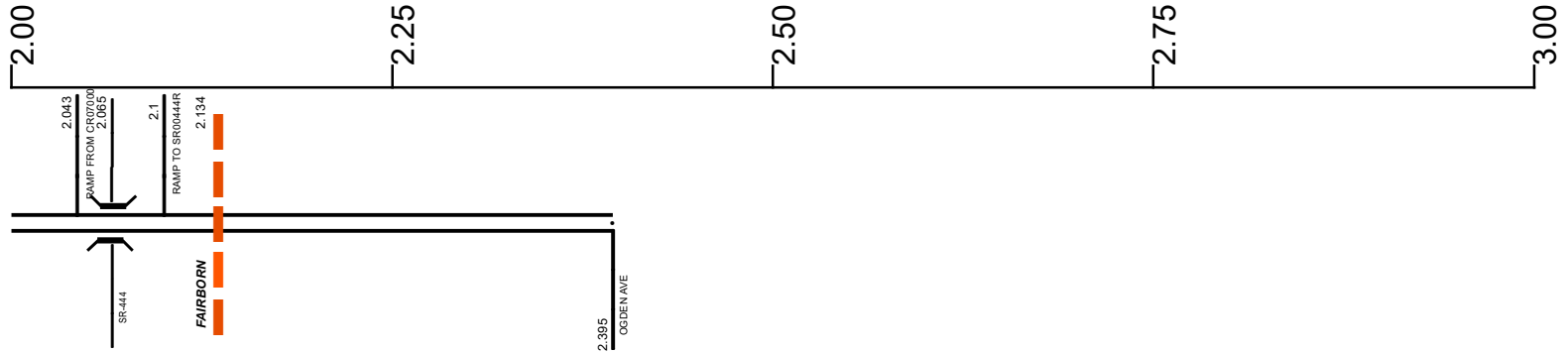
transportation.ohio.gov  
 Prepared by  
 The Ohio Department of Transportation  
 Office of Technical Services  
 Roadway Information

# SGRESR00844\*\*C

State True Log

2.395

County True Log



**Surface Type & Width (Left / Right)**

G 48'	G 54'
0 - 2.353	2.353 - 2.395

**Shoulder Type & Width (Left / Right)**

5 (12'/12')	1 (0'/0')
0.906 - 2.353	2.353 - 2.395

**Median Type and Width**

2 ( 58' )	3 ( 20' )
0.47 - 2.35	2.353 - 2.395

**Through Lanes**

4
0 - 2.395

**Street Name**

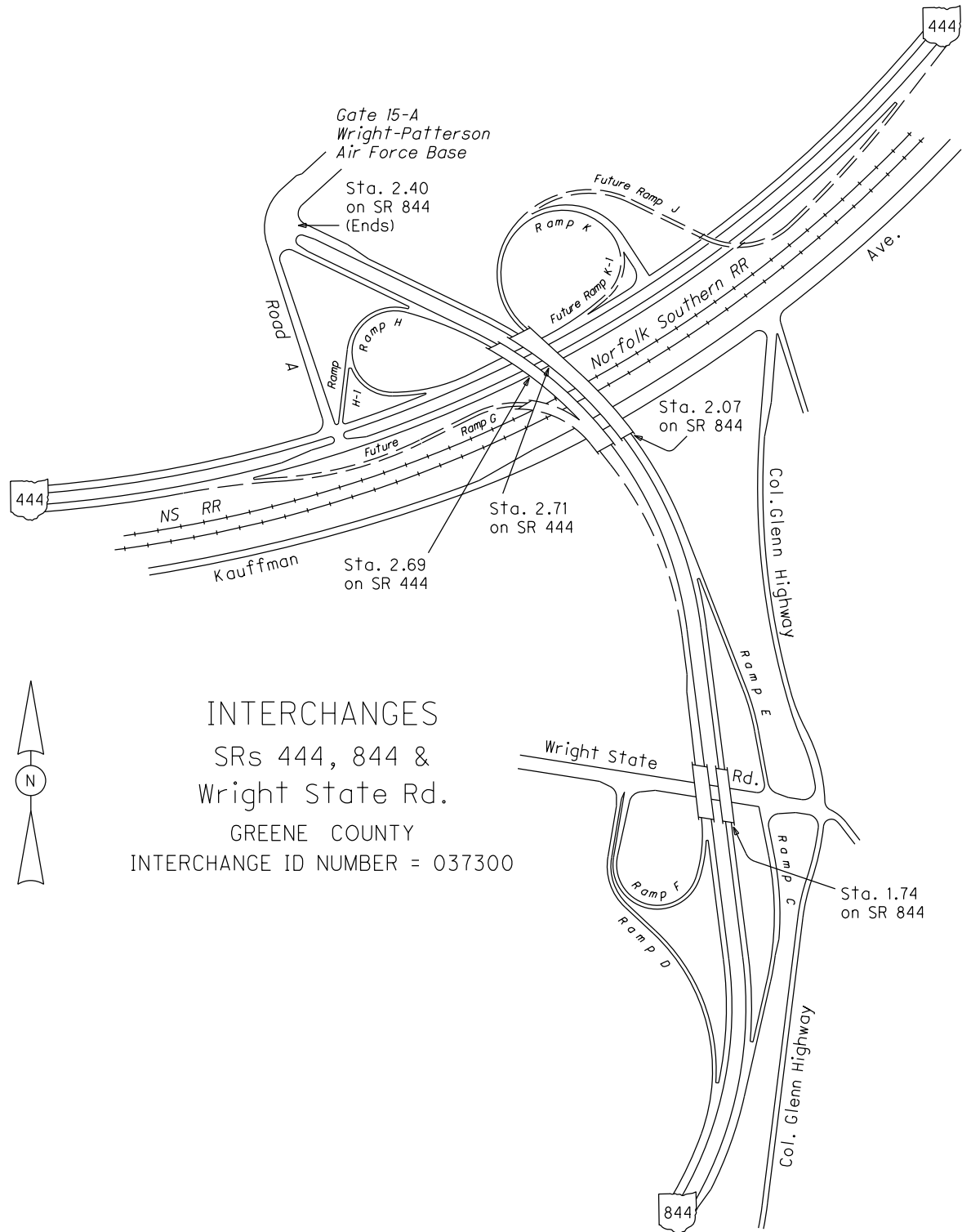
RAMP B	SR 844
0 - 2.35	2.35 - 2.395

- |  |   |   |   |
|--|---|---|---|
| <ul style="list-style-type: none"> <li> Non-divided Highway</li> <li> Divided Highway</li> <li> Secondary Segment</li> <li> Corporation</li> </ul> | <ul style="list-style-type: none"> <li> Bridge (on route)</li> <li> Underpass</li> <li> Overpass</li> </ul> | <ul style="list-style-type: none"> <li> Railroad (at grade)</li> <li> Railroad (underpass)</li> <li> Railroad (overpass)</li> </ul> | <ul style="list-style-type: none"> <li> Intersection</li> </ul> |
|--|---|---|---|

Created on: 6/27/2025

transportation.ohio.gov

Prepared by  
The Ohio Department of Transportation  
Office of Technical Services  
Roadway Information



INTERCHANGES  
 SRs 444, 844 &  
 Wright State Rd.  
 GREENE COUNTY  
 INTERCHANGE ID NUMBER = 037300

## Historical Project List for SGRESR00844\*\*C

Begin Measure	End Measure	Project ID Number	Construction Completion Date	Treatment Category	Treatment Type
0.000	0.958	25232	8-2007	Minor Rehabilitation	60-AC Overlay w/Rpr
0.469	2.345	97933	9-2016	Minor Rehabilitation	50-AC Overlay w/o Rpr

# Roadway Codes

## Access Control Journalized

- F - Full Access Control
- L - Limited Access Control
- N - No Access Control

## Access Control Operational

- 1 - Full Access Control
- 2 - Partial Access Control
- 3 - No Access Control

## Base Type

- F - Crack and Seat
- H - Rubblize and Roll
- I - Aggregate Base 304 or Traffic Compacted
- K - Water Bound Macadam
- L - Bituminous Concrete Mix or Penetration Macadam
- N - Plain Concrete
- P - Reinforced Concrete
- R - Brick (Flexible)
- T - Brick (Rigid)

## Direction of Travel

- B - Both (Two-way)
- F - One-way Cardinal
- T - One-way Non-cardinal

## Facility Type

- 1 - One-way Roadway
- 2 - Two-way Roadway
- 4 - Ramp
- 5 - Non-mainline
- 6 - Non-inventory Direction
- 7 - Planned / Unbuilt

## Historical Federal Aid Indicator

- N - Not a FAP Route
- Y - FAP Route

## Functional Classification

- 01 - Interstate
- 02 - Principal Arterial (Freeways)
- 03 - Principal Arterial (Other)
- 04 - Minor Arterial
- 05 - Major Collector
- 06 - Minor Collector
- 07 - Local

## Leave / Reenter Indicator

- Y - Route leaves/reenters at this point
- N - Route does not leave/reenter at this point

## Median Type

- 1 - None
- 2 - Unprotected
- 3 - Curbed
- 4 - Positive Barrier (Unspecified)
- 5 - Positive Barrier (Flexible)
- 6 - Positive Barrier (Semi-rigid)
- 7 - Positive Barrier (Rigid)

## NHS

- N - National Highway System
- H - Congressional Corridor
- 2 - Major Airport
- 3 - Major Port Facility
- 4 - Major Amtrak Station
- 5 - Major Rail / Truck Terminal
- 6 - Major Intercity Bus Terminal
- 7 - Major Public Transit / Multi-modal Passenger Terminal
- 8 - Major Pipeline Terminal
- 9 - Major Ferry Terminal

## Priority System

- G - General
- P - Priority System
- U - Urban

## Scenic Byway Code

- A - All American Road
- N - National Scenic Byway
- S - State Scenic Byway

## Shoulder Type

- 1 - None
- 2 - Surfaced shoulder exists (bituminous concrete {AC})
- 3 - Surfaced shoulder exists (Portland Cement Concrete {PCC})
- 4 - Stabilized shoulder exists (gravel or other granular material)
- 5 - Combination shoulder exists (two or more surface types)
- 6 - Earth shoulder exists
- 7 - Barrier curb exists; no shoulder in front of curb

## Surface Type

- A - Combination
- B - Brick
- C - Continuous Reinforced Concrete
- D - Reinforced Concrete
- E - Plain Concrete
- G - Bituminous Concrete
- I - Chipseal on Granular
- K - Open Graded Bituminous
- L - Chipseal or Micro
- M - Gravel
- U - Unimproved
- X - Right of Way Only