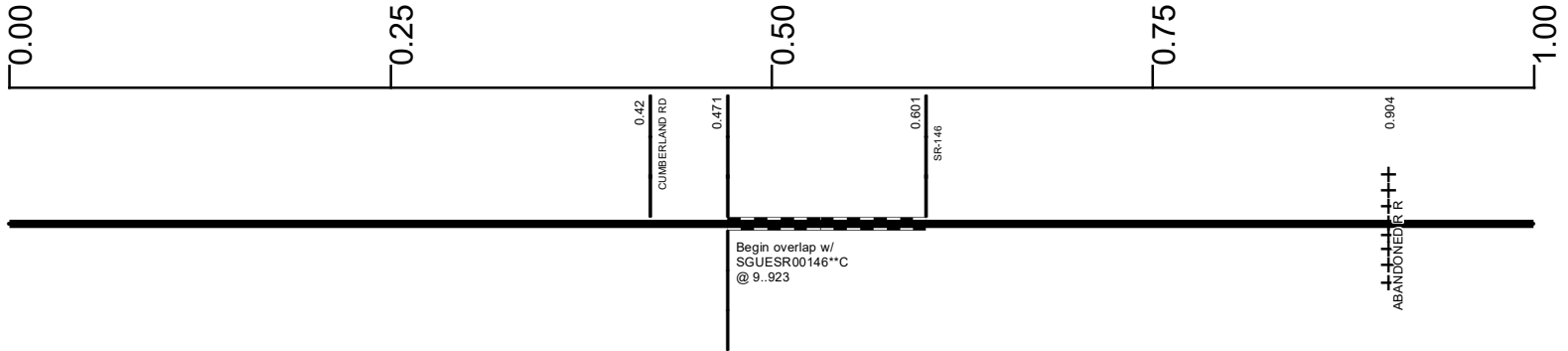


SGUESR00821**C

State True Log 42.095

43.095

County True Log



Surface Type & Width (Left / Right)

G (16'/4')	
0 - 0.471	

Base Type (Left / Right)

N / L	
0 - 0.471	

Shoulder Type & Width (Left / Right)

2 (4'/4')	
0 - 0.471	

Through Lanes

2	
0 - 0.471	

Street Name

SR 821	
0 - 0.471	

Surface Type & Width (Left / Right)

G 24'	G (16'/4')
0.601 - 0.74	0.74 - 4.922

Base Type (Left / Right)

L	N / L
0.601 - 0.74	0.74 - 4.922

Shoulder Type & Width (Left / Right)

2 (8'/8')	2 (4'/4')
0.601 - 0.74	0.74 - 4.922

Through Lanes

2	
0.601 - 5.943	

Street Name

SR 821	
0.601 - 4.965	

- | | | | |
|--|---|---|---|
| <ul style="list-style-type: none"> Non-divided Highway Divided Highway Secondary Segment Corporation | <ul style="list-style-type: none"> Bridge (on route) Underpass Overpass | <ul style="list-style-type: none"> Railroad (at grade) Railroad (underpass) Railroad (overpass) | <ul style="list-style-type: none"> Intersection |
|--|---|---|---|

Created on: 6/27/2025

transportation.ohio.gov

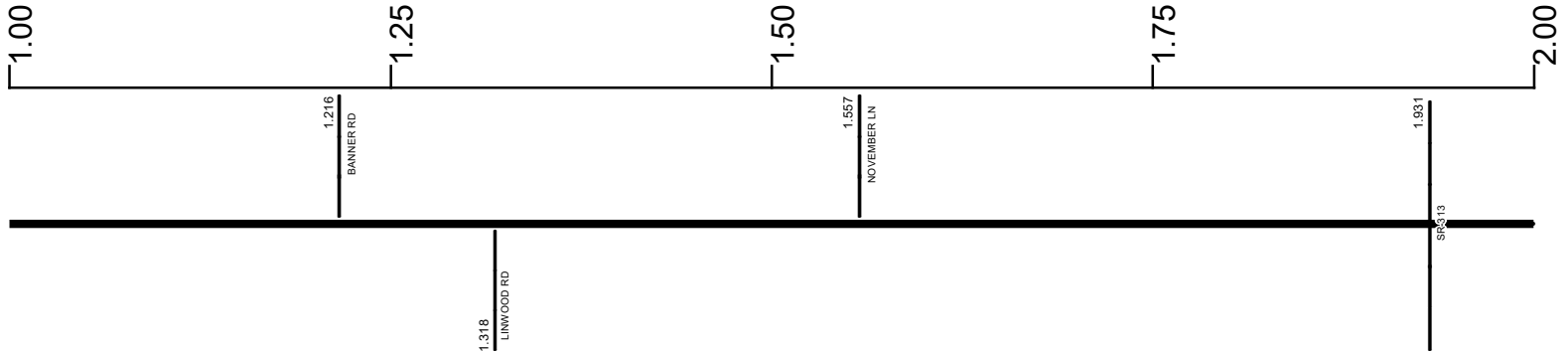
Prepared by
The Ohio Department of Transportation
Office of Technical Services
Roadway Information

SGUESR00821**C

State True Log

44.095

County True Log



Surface Type & Width (Left / Right)

G (16'4')
0.74 - 4.922

Base Type (Left / Right)

N / L
0.74 - 4.922

Shoulder Type & Width (Left / Right)

2 (4'4')
0.74 - 4.922

Through Lanes

2
0.601 - 5.943

Street Name

SR 821
0.601 - 4.965

- | | | | |
|---------------------|-------------------|----------------------|--------------|
| Non-divided Highway | Bridge (on route) | Railroad (at grade) | Intersection |
| Divided Highway | Underpass | Railroad (underpass) | |
| Secondary Segment | Overpass | Railroad (overpass) | |
| Corporation | | | |

Created on: 6/27/2025

transportation.ohio.gov

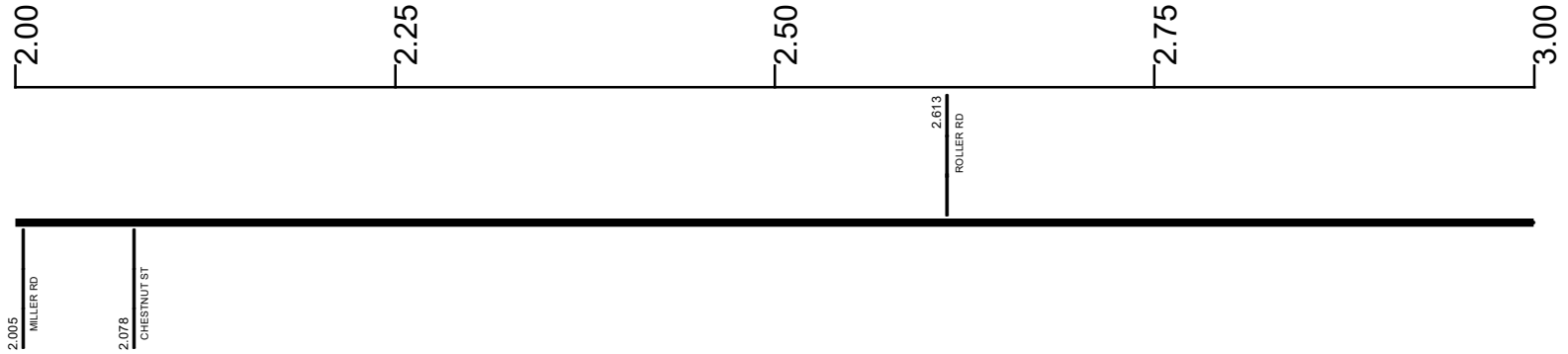
Prepared by
The Ohio Department of Transportation
Office of Technical Services
Roadway Information

SGUESR00821**C

State True Log

45.095

County True Log



Surface Type & Width (Left / Right)

G (16'4')
0.74 - 4.922

Base Type (Left / Right)

N / L
0.74 - 4.922

Shoulder Type & Width (Left / Right)

2 (4'4')
0.74 - 4.922

Through Lanes

2
0.601 - 5.943

Street Name

SR 821
0.601 - 4.965

- | | | | |
|---------------------|-------------------|----------------------|--------------|
| Non-divided Highway | Bridge (on route) | Railroad (at grade) | Intersection |
| Divided Highway | Underpass | Railroad (underpass) | |
| Secondary Segment | Overpass | Railroad (overpass) | |
| Corporation | | | |

Created on: 6/27/2025

transportation.ohio.gov

Prepared by
The Ohio Department of Transportation
Office of Technical Services
Roadway Information

SGUESR00821**C

State True Log

46.095

County True Log



Surface Type & Width (Left / Right)

	G (16'4')
	0.74 - 4.922

Base Type (Left / Right)

	N / L
	0.74 - 4.922

Shoulder Type & Width (Left / Right)

	2 (4'4')
	0.74 - 4.922

Through Lanes

	2
	0.601 - 5.943

Street Name

	SR 821
	0.601 - 4.965

- | | | | |
|--|---|---|---|
| <ul style="list-style-type: none"> Non-divided Highway Divided Highway Secondary Segment Corporation | <ul style="list-style-type: none"> Bridge (on route) Underpass Overpass | <ul style="list-style-type: none"> Railroad (at grade) Railroad (underpass) Railroad (overpass) | <ul style="list-style-type: none"> Intersection |
|--|---|---|---|

Created on: 6/27/2025

transportation.ohio.gov

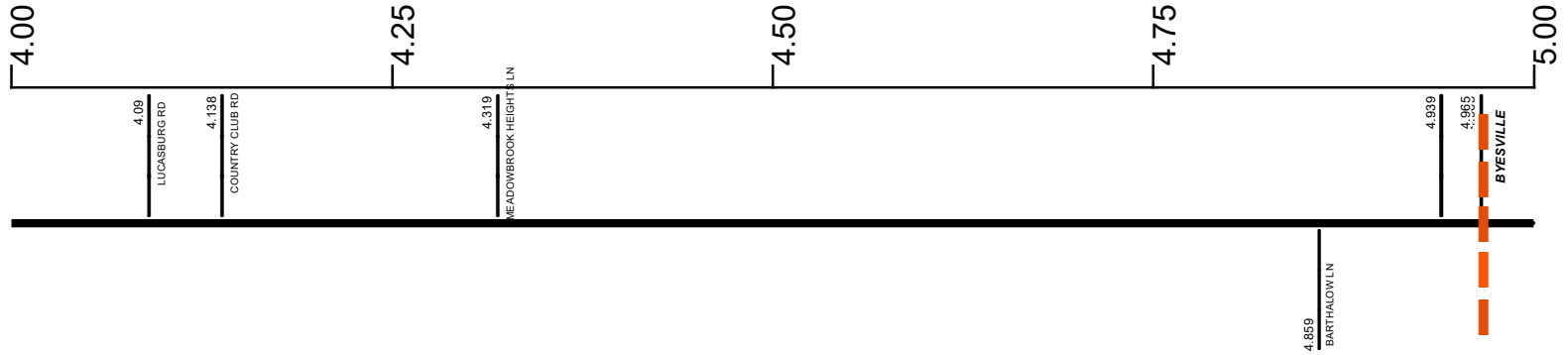
Prepared by
The Ohio Department of Transportation
Office of Technical Services
Roadway Information

SGUESR00821**C

State True Log

47.095

County True Log



Surface Type & Width (Left / Right)

	G (16'4')	G 24'
	0.74 - 4.922	4.922 - 5.072

Base Type (Left / Right)

	N / L	L
	0.74 - 4.922	4.922 - 5.072

Shoulder Type & Width (Left / Right)

	2 (4'4')	2 (6'6')
	0.74 - 4.922	4.922 - 5.072

Through Lanes

	2	
	0.601 - 5.943	

Street Name

	SR 821	S 2ND ST
	0.601 - 4.965	4.965 - 5.943

- Non-divided Highway
- Divided Highway
- Secondary Segment
- Corporation
- Bridge (on route)
- Underpass
- Overpass
- Railroad (at grade)
- Railroad (underpass)
- Railroad (overpass)
- Intersection

Created on: 6/27/2025

transportation.ohio.gov

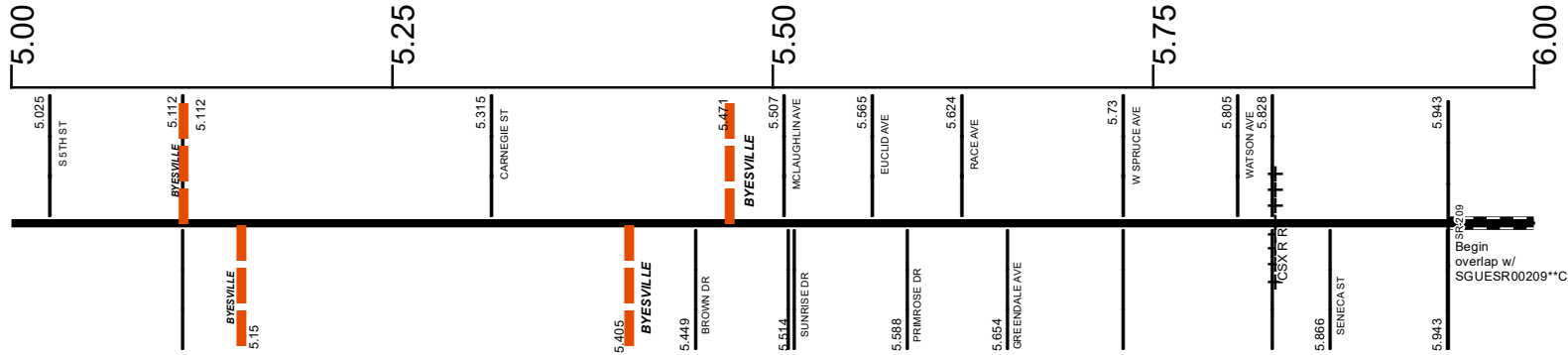
Prepared by
The Ohio Department of Transportation
Office of Technical Services
Roadway Information

SGUESR00821**C

State True Log

48.095

County True Log



Surface Type & Width (Left / Right)

G 24'	G (16'4')	G 24'
4.922 - 5.072	5.072 - 5.449	5.449 - 5.943

Base Type (Left / Right)

L	N / L	T
4.922 - 5.072	5.072 - 5.449	5.449 - 5.943

Shoulder Type & Width (Left / Right)

2 (6'6')	2 (4'4')	2 (2'2')	1 (0'0')
4.922 - 5.072	5.072 - 5.112	5.112 - 5.449	5.449 - 5.943

Through Lanes

	2	
	0.601 - 5.943	

Street Name

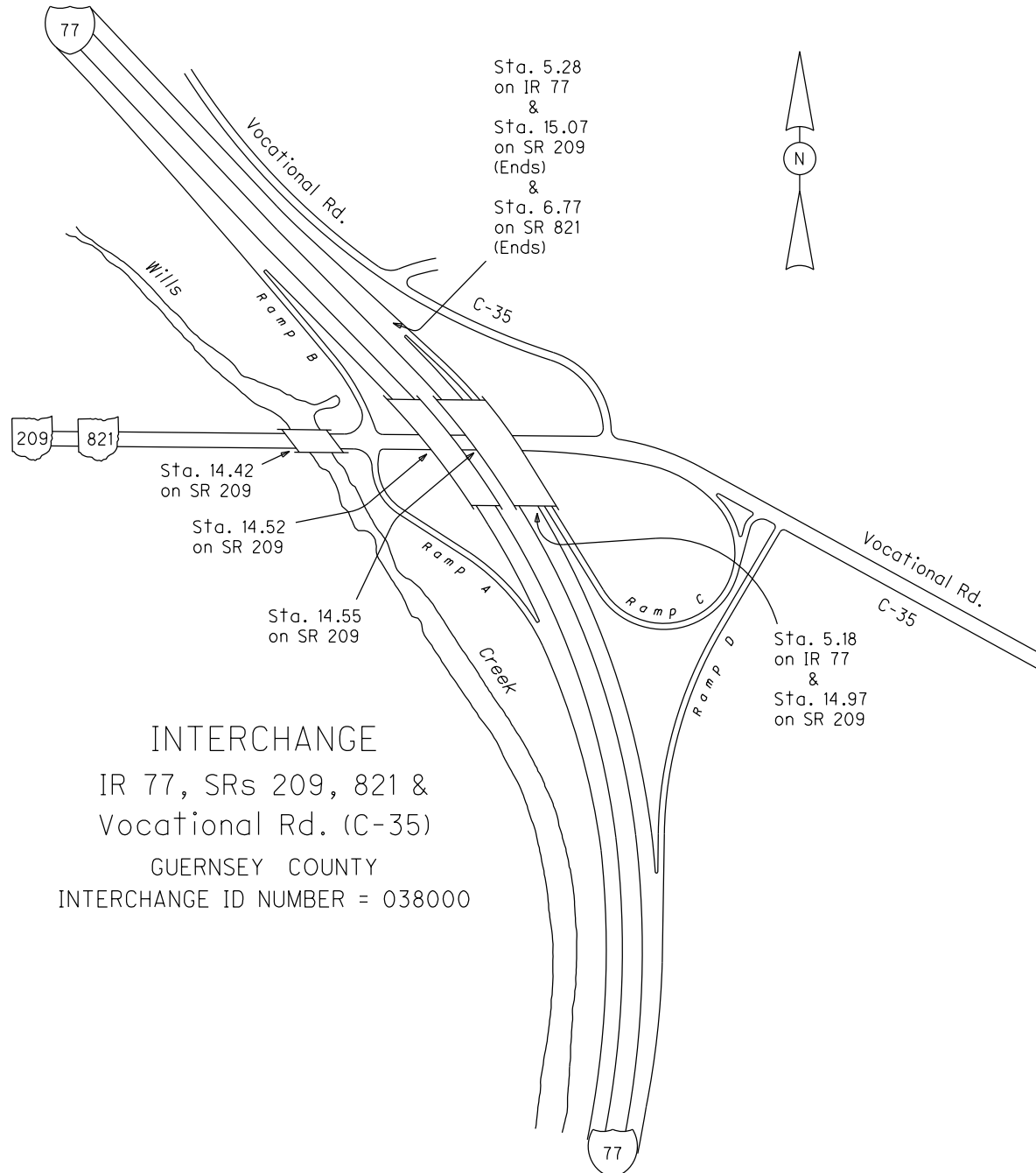
	S 2ND ST	
	4.965 - 5.943	

- Non-divided Highway
- Divided Highway
- Secondary Segment
- Corporation
- Bridge (on route)
- Underpass
- Overpass
- Railroad (at grade)
- Railroad (underpass)
- Railroad (overpass)
- Intersection

Created on: 6/27/2025

transportation.ohio.gov

Prepared by
The Ohio Department of Transportation
Office of Technical Services
Roadway Information



INTERCHANGE
 IR 77, SRs 209, 821 &
 Vocational Rd. (C-35)
 GUERNSEY COUNTY
 INTERCHANGE ID NUMBER = 038000

IR77 SHEET 2 OF 5
 SR209 SHEET 4 OF 4
 SR821 SHEET 2 OF 2

REVISED Jan 2015

SGUESR00821**C

State True
Log

48.868

County True
Log



Begin overlap w/
SGUESR00209**C
@ 14.984

- | | | | |
|---|---|---|---|
| <ul style="list-style-type: none"> Non-divided Highway Divided Highway Secondary Segment Corporation | <ul style="list-style-type: none"> Bridge (on route) Underpass Overpass | <ul style="list-style-type: none"> Railroad (at grade) Railroad (underpass) Railroad (overpass) | <ul style="list-style-type: none"> Intersection |
|---|---|---|---|

Created on: 6/27/2025

transportation.ohio.gov

Prepared by
The Ohio Department of Transportation
Office of Technical Services
Roadway Information

Historical Project List for SGUESR00821**C

Begin Measure	End Measure	Project ID Number	Construction Completion Date	Treatment Category	Treatment Type
0.000	0.471	87416	10-2010	Minor Rehabilitation	60-AC Overlay w/Rpr
0.601	4.141	87416	10-2010	Minor Rehabilitation	60-AC Overlay w/Rpr
4.141	4.922	87416	10-2010	Minor Rehabilitation	60-AC Overlay w/Rpr
5.452	5.943	76451	12-2015	Minor Rehabilitation	60-AC Overlay w/Rpr

Roadway Codes

Access Control Journalized

- F - Full Access Control
- L - Limited Access Control
- N - No Access Control

Access Control Operational

- 1 - Full Access Control
- 2 - Partial Access Control
- 3 - No Access Control

Base Type

- F - Crack and Seat
- H - Rubblize and Roll
- I - Aggregate Base 304 or Traffic Compacted
- K - Water Bound Macadam
- L - Bituminous Concrete Mix or Penetration Macadam
- N - Plain Concrete
- P - Reinforced Concrete
- R - Brick (Flexible)
- T - Brick (Rigid)

Direction of Travel

- B - Both (Two-way)
- F - One-way Cardinal
- T - One-way Non-cardinal

Facility Type

- 1 - One-way Roadway
- 2 - Two-way Roadway
- 4 - Ramp
- 5 - Non-mainline
- 6 - Non-inventory Direction
- 7 - Planned / Unbuilt

Historical Federal Aid Indicator

- N - Not a FAP Route
- Y - FAP Route

Functional Classification

- 01 - Interstate
- 02 - Principal Arterial (Freeways)
- 03 - Principal Arterial (Other)
- 04 - Minor Arterial
- 05 - Major Collector
- 06 - Minor Collector
- 07 - Local

Leave / Reenter Indicator

- Y - Route leaves/reenters at this point
- N - Route does not leave/reenter at this point

Median Type

- 1 - None
- 2 - Unprotected
- 3 - Curbed
- 4 - Positive Barrier (Unspecified)
- 5 - Positive Barrier (Flexible)
- 6 - Positive Barrier (Semi-rigid)
- 7 - Positive Barrier (Rigid)

NHS

- N - National Highway System
- H - Congressional Corridor
- 2 - Major Airport
- 3 - Major Port Facility
- 4 - Major Amtrak Station
- 5 - Major Rail / Truck Terminal
- 6 - Major Intercity Bus Terminal
- 7 - Major Public Transit / Multi-modal Passenger Terminal
- 8 - Major Pipeline Terminal
- 9 - Major Ferry Terminal

Priority System

- G - General
- P - Priority System
- U - Urban

Scenic Byway Code

- A - All American Road
- N - National Scenic Byway
- S - State Scenic Byway

Shoulder Type

- 1 - None
- 2 - Surfaced shoulder exists (bituminous concrete {AC})
- 3 - Surfaced shoulder exists (Portland Cement Concrete {PCC})
- 4 - Stabilized shoulder exists (gravel or other granular material)
- 5 - Combination shoulder exists (two or more surface types)
- 6 - Earth shoulder exists
- 7 - Barrier curb exists; no shoulder in front of curb

Surface Type

- A - Combination
- B - Brick
- C - Continuous Reinforced Concrete
- D - Reinforced Concrete
- E - Plain Concrete
- G - Bituminous Concrete
- I - Chipseal on Granular
- K - Open Graded Bituminous
- L - Chipseal or Micro
- M - Gravel
- U - Unimproved
- X - Right of Way Only