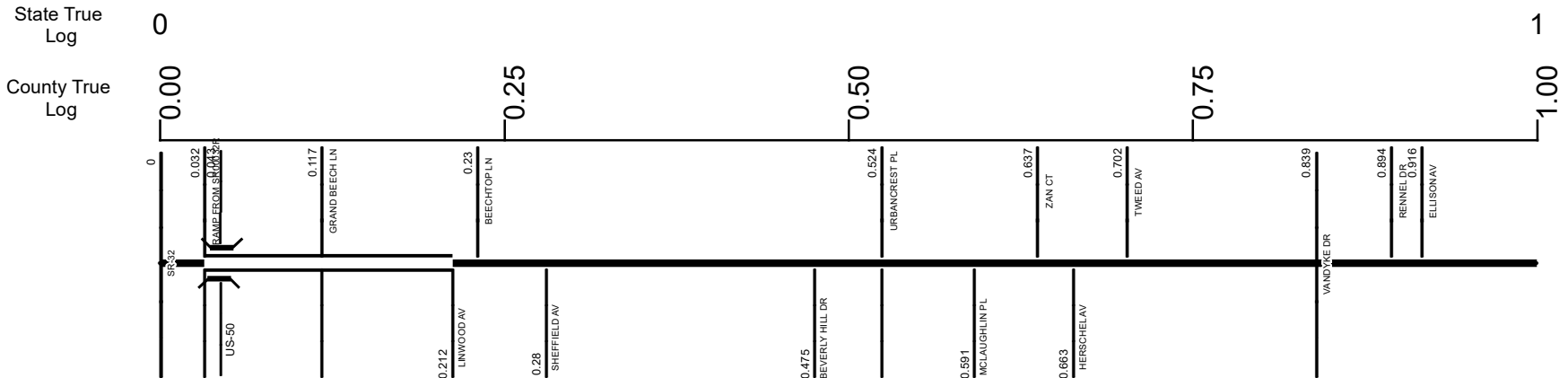
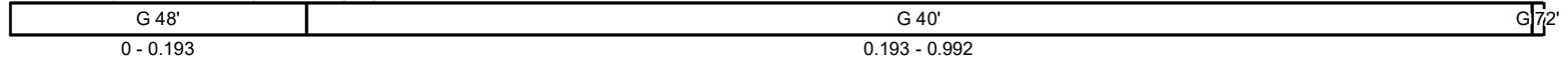


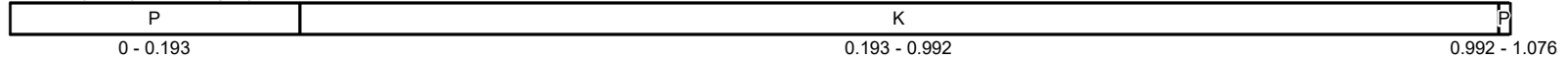
SHAMSR00561**C



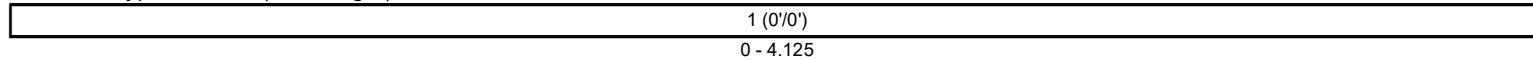
Surface Type & Width (Left / Right)



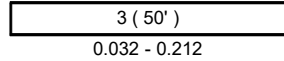
Base Type (Left / Right)



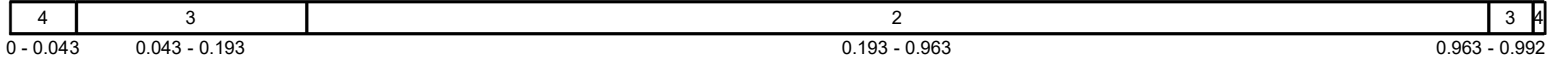
Shoulder Type & Width (Left / Right)



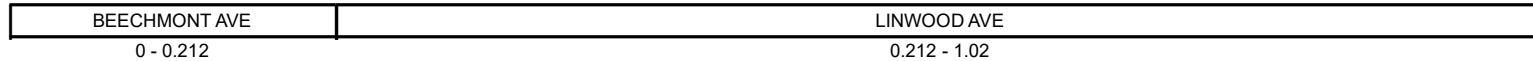
Median Type and Width



Through Lanes



Street Name

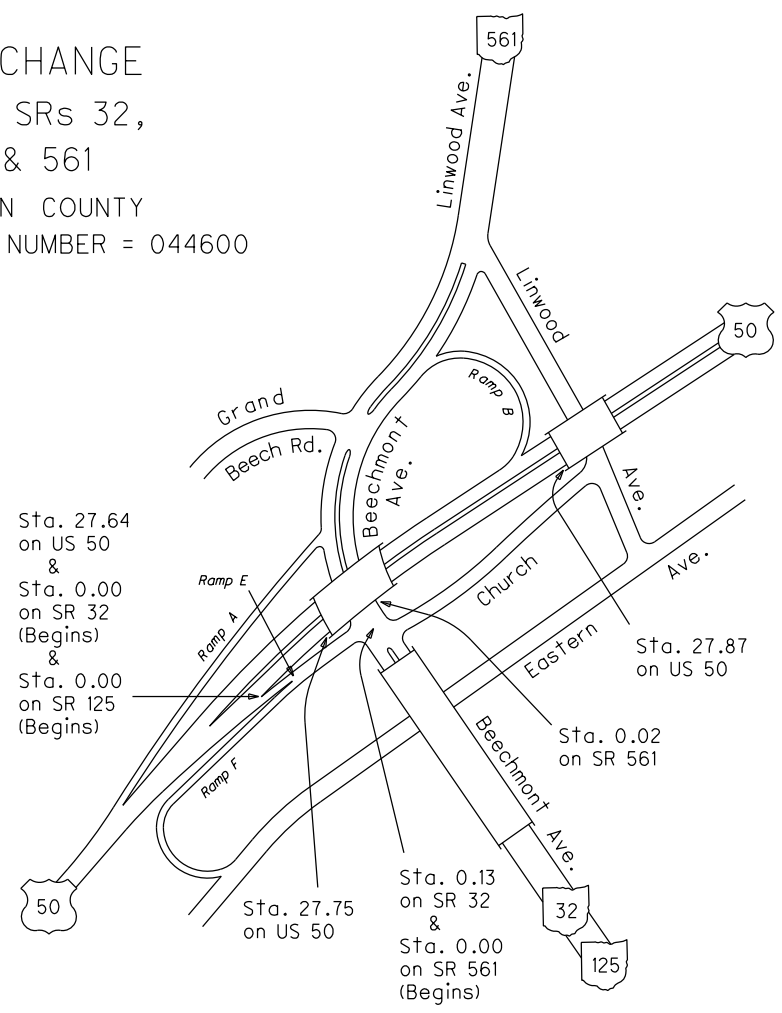
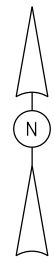


- | | | | |
|--|---|---|---|
| <ul style="list-style-type: none"> Non-divided Highway Divided Highway Secondary Segment Corporation | <ul style="list-style-type: none"> Bridge (on route) Underpass Overpass | <ul style="list-style-type: none"> Railroad (at grade) Railroad (underpass) Railroad (overpass) | <ul style="list-style-type: none"> Intersection |
|--|---|---|---|

transportation.ohio.gov

Prepared by
The Ohio Department of Transportation
Office of Technical Services
Roadway Information

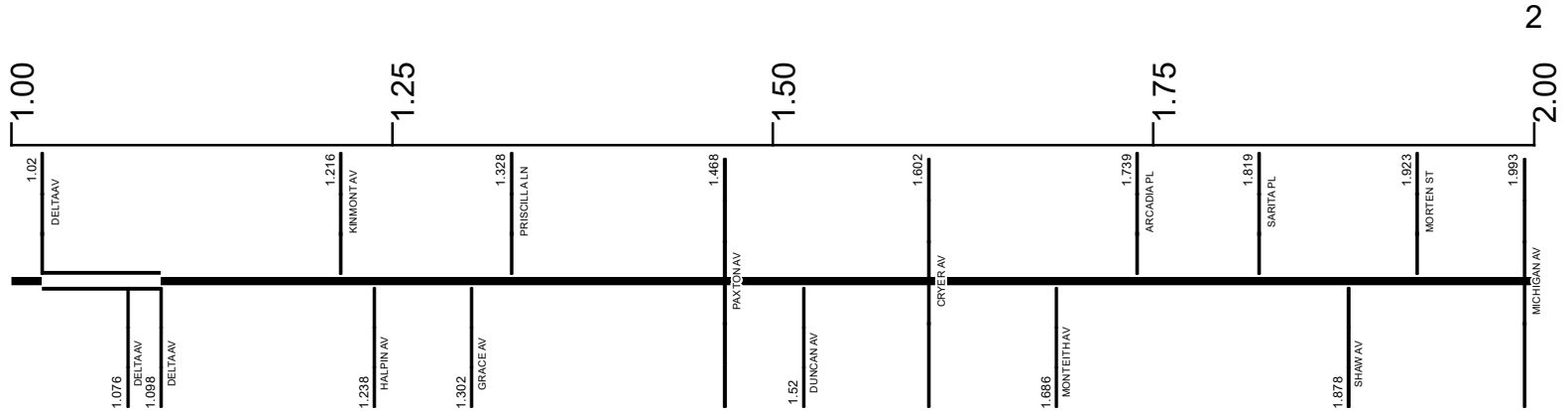
INTERCHANGE
 US 50, SRs 32,
 125 & 561
 HAMILTON COUNTY
 INTERCHANGE ID NUMBER = 044600



SHAMSR00561**C

State True Log

County True Log



Surface Type & Width (Left / Right)

G 72'	G 40'
0.992 - 1.076	1.076 - 2.268

Base Type (Left / Right)

P	K
0.992 - 1.076	1.076 - 2.08

Shoulder Type & Width (Left / Right)

	1 (0'/0')
	0 - 4.125

Median Type and Width

3 (14')
1.02 - 1.098

Resurface Year

2024
1.878 - 2.268

Through Lanes

4	2
0.992 - 1.181	1.181 - 2.586

Street Name

DELTA AVE	LINWOOD AVE	OBSERVATORY AVE
0.212 - 1.02 1.02 - 1.076	1.098 - 1.878	1.878 - 2.08

- Non-divided Highway
- Divided Highway
- Secondary Segment
- Corporation**
- Bridge (on route)
- Underpass
- Overpass
- Railroad (at grade)
- Railroad (underpass)
- Railroad (overpass)
- Intersection

Created on: 6/30/2025

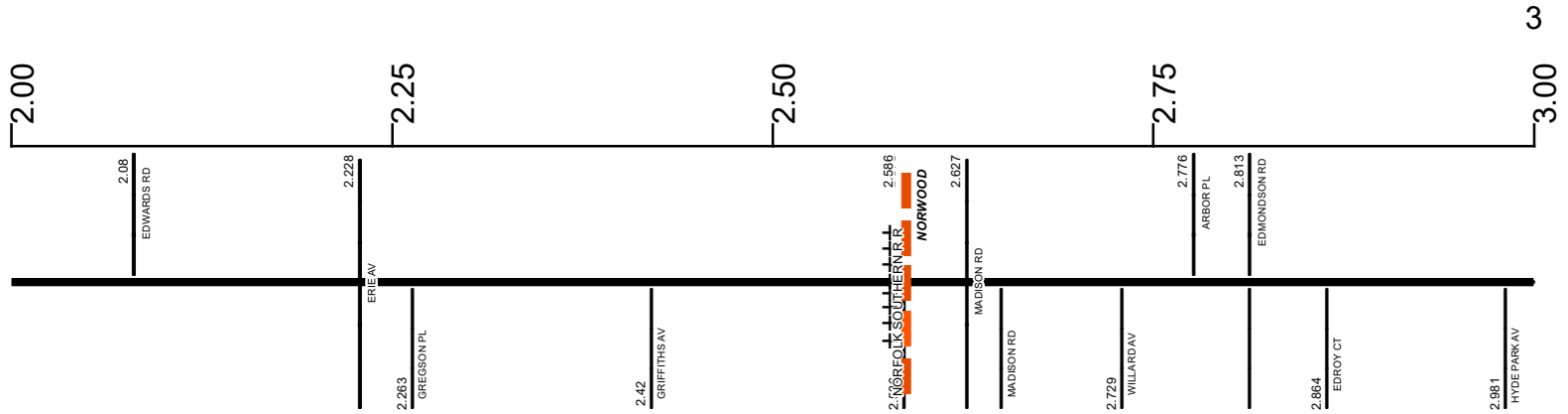
transportation.ohio.gov

Prepared by
The Ohio Department of Transportation
Office of Technical Services
Roadway Information

SHAMSR00561**C

State True Log

County True Log



Surface Type & Width (Left / Right)

G 40'	G 50'	G (40'/16')	G 40'
1.076 - 2.268	2.268 - 2.586	2.586 - 2.838	2.838 - 3.093

Base Type (Left / Right)

K	I	I/L	I
1.076 - 2.08	2.08 - 2.586	2.586 - 2.838	2.838 - 3.133

Shoulder Type & Width (Left / Right)

1 (0'/0')
0 - 4.125

Resurface Year

2024

1.878 - 2.268

Through Lanes

2	4	3
---	---	---

1.181 - 2.586

2.586 - 2.838

2.838 - 3.093

Street Name

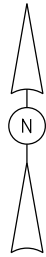
OBSERVATORY AVE	EDWARDS RD
1.878 - 2.08	2.08 - 3.093

- Non-divided Highway
- Divided Highway
- Secondary Segment
- Corporation
- Bridge (on route)
- Underpass
- Overpass
- Railroad (at grade)
- Railroad (underpass)
- Railroad (overpass)
- Intersection

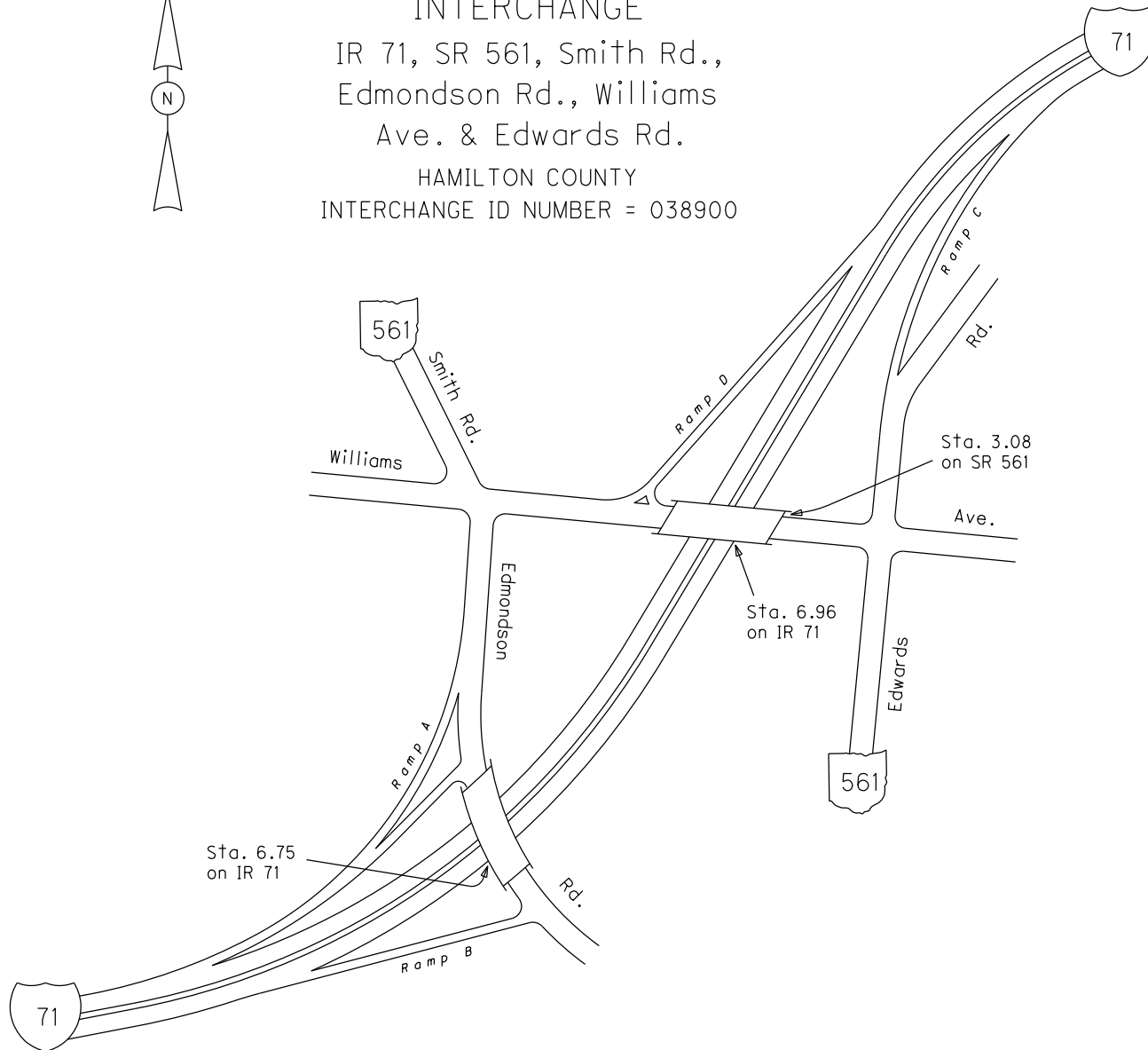
Created on: 6/30/2025

transportation.ohio.gov

Prepared by
The Ohio Department of Transportation
Office of Technical Services
Roadway Information



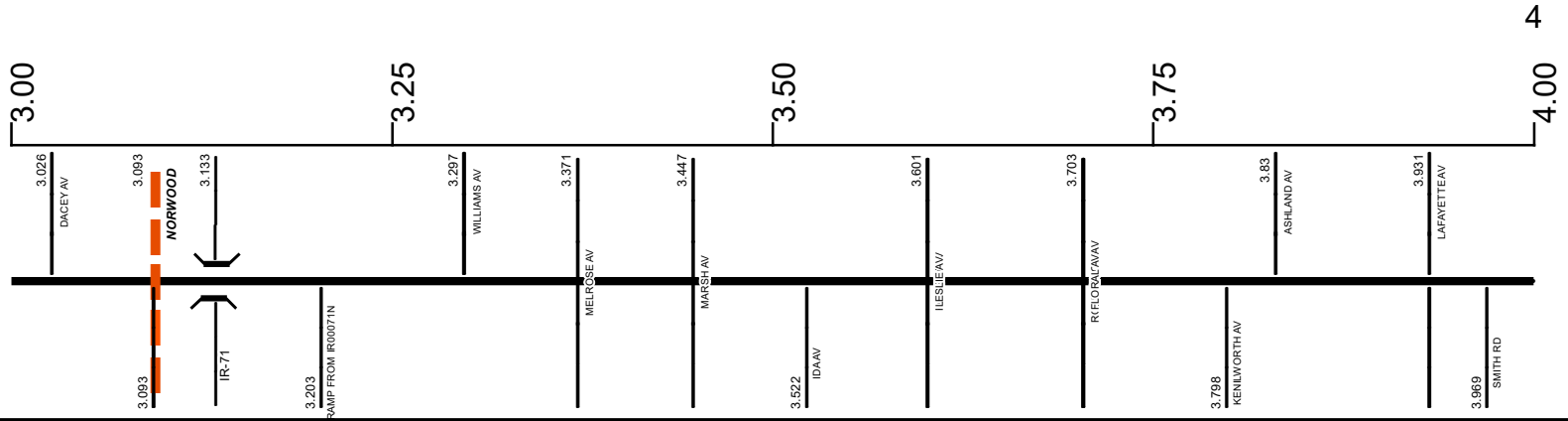
INTERCHANGE
IR 71, SR 561, Smith Rd.,
Edmondson Rd., Williams
Ave. & Edwards Rd.
HAMILTON COUNTY
INTERCHANGE ID NUMBER = 038900



SHAMSR00561**C

State True Log

County True Log



Surface Type & Width (Left / Right)

G 40'	G 48'	D 48'	G 48'	G 40'	G 68'
2.838 - 3.093	3.093 - 3.133	3.133 - 3.234	3.234 - 3.297	3.297 - 3.969	3.969 - 4.125

Base Type (Left / Right)

I	I	P	T	I
2.838 - 3.133	3.234 - 3.297	3.297 - 3.88	3.88 - 3.969	3.969 - 4.125

Shoulder Type & Width (Left / Right)

	1 (0'/0')
	0 - 4.125

Resurface Year

	2024
	3.093 - 4.125

Through Lanes

3	4
2.838 - 3.093	3.093 - 4.125

Street Name

EDWARDS RD	WILLIAMS AVE	SMITH RD	SHERMAN AVE
2.08 - 3.093	3.093 - 3.297	3.297 - 3.969	3.969 - 4.125

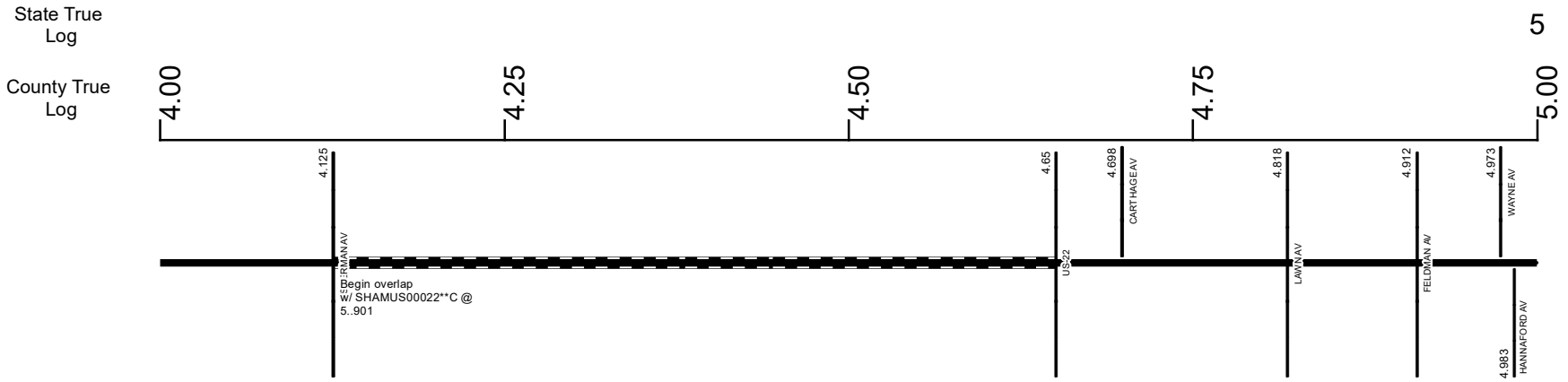
- Non-divided Highway
- Divided Highway
- Secondary Segment
- Corporation
- Bridge (on route)
- Underpass
- Overpass
- Railroad (at grade)
- Railroad (underpass)
- Railroad (overpass)
- Intersection

Created on: 6/30/2025

transportation.ohio.gov

Prepared by
The Ohio Department of Transportation
Office of Technical Services
Roadway Information

SHAMSR00561**C



Surface Type & Width (Left / Right)

 3.969 - 4.125

Base Type (Left / Right)

 3.969 - 4.125

Shoulder Type & Width (Left / Right)

 0 - 4.125

Resurface Year

 3.093 - 4.125

Through Lanes

 3.093 - 4.125

Street Name

 3.969 - 4.125

Surface Type & Width (Left / Right)

 4.65 - 5.419

Base Type (Left / Right)

 4.65 - 5.419

Shoulder Type & Width (Left / Right)

 4.65 - 7.352

Resurface Year

 4.65 - 5.419

Through Lanes

 4.65 - 5.419

Street Name

 4.65 - 4.698 4.698 - 5.42

- Non-divided Highway
- Divided Highway
- Secondary Segment
- Corporation
- Bridge (on route)
- Underpass
- Overpass
- Railroad (at grade)
- Railroad (underpass)
- Railroad (overpass)
- Intersection

Created on: 6/30/2025

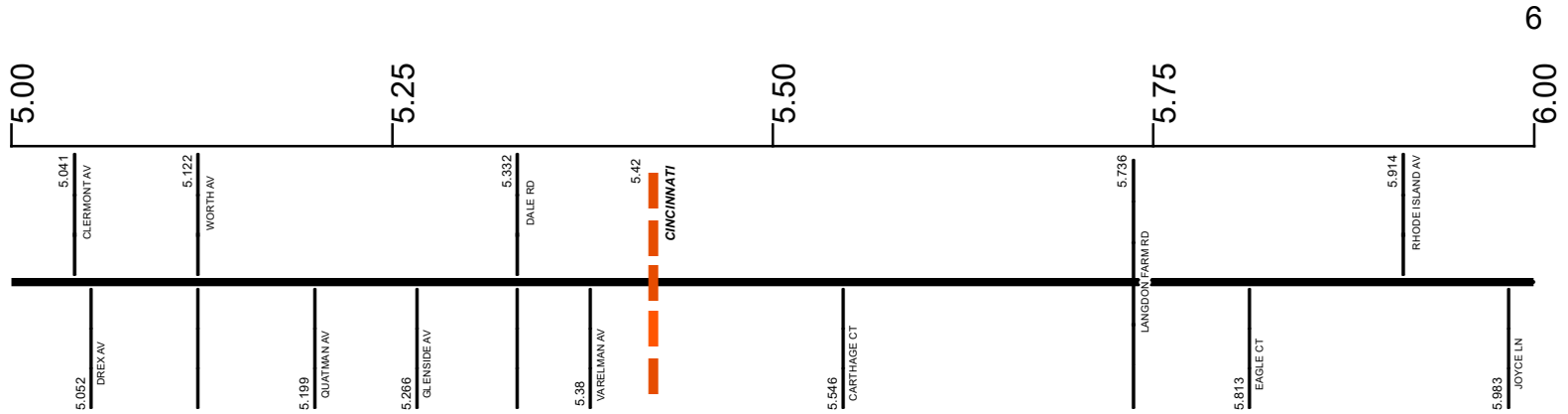
transportation.ohio.gov

Prepared by
 The Ohio Department of Transportation
 Office of Technical Services
 Roadway Information

SHAMSR00561**C

State True Log

County True Log



Surface Type & Width (Left / Right)

G 40'	G 44'
4.65 - 5.419	5.419 - 6.105

Base Type (Left / Right)

T	P
4.65 - 5.419	5.419 - 7.233

Shoulder Type & Width (Left / Right)

1 (0'/0')
4.65 - 7.352

Resurface Year

2024
4.65 - 5.419

Through Lanes

2	4
4.65 - 5.419	5.419 - 7.352

Street Name

CARTHAGE AVE	E SEYMOUR AVE
4.698 - 5.42	5.42 - 7.352

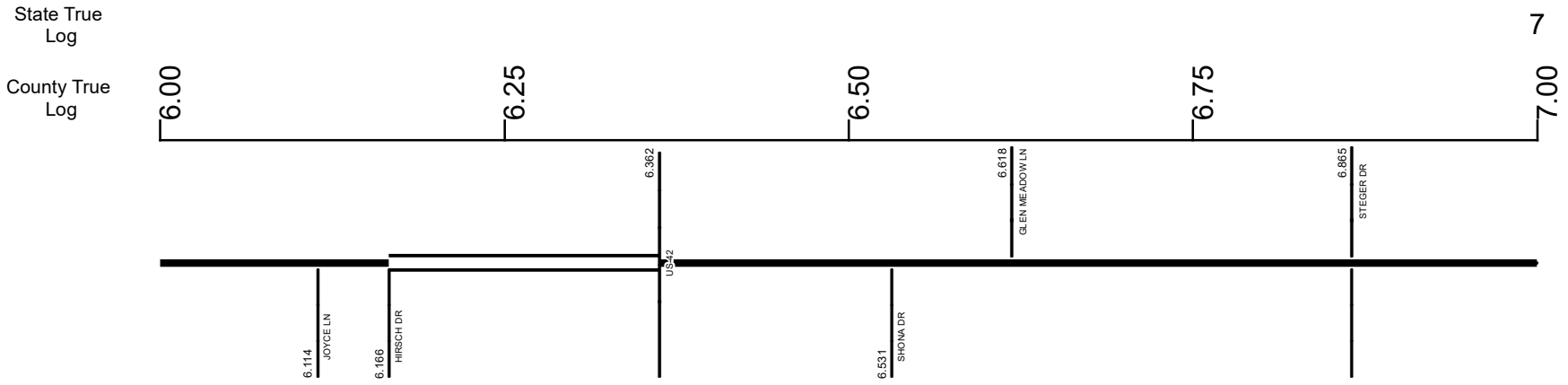
- Non-divided Highway
- Divided Highway
- Secondary Segment
- Corporation
- Bridge (on route)
- Underpass
- Overpass
- Railroad (at grade)
- Railroad (underpass)
- Railroad (overpass)
- Intersection

Created on: 6/30/2025

transportation.ohio.gov

Prepared by
The Ohio Department of Transportation
Office of Technical Services
Roadway Information

SHAMSR00561**C



Surface Type & Width (Left / Right)				
G 44'	G (27'28')	G 44'	G 60'	G (31'32')
5.419 - 6.105	6.105 - 6.223	6.223 - 6.403	6.403 - 6.689	6.689 - 7.168
Base Type (Left / Right)				
P				
5.419 - 7.233				
Shoulder Type & Width (Left / Right)				
1 (0'0')				
4.65 - 7.352				
Median Type and Width				
3 (4')				
6.166 - 6.362				
Through Lanes				
4				
5.419 - 7.352				
Street Name				
E SEYMOUR AVE				
5.42 - 7.352				

Non-divided Highway	Bridge (on route)	Railroad (at grade)	Intersection
Divided Highway	Underpass	Railroad (underpass)	
Secondary Segment	Overpass	Railroad (overpass)	
Corporation			

Created on: 6/30/2025

transportation.ohio.gov

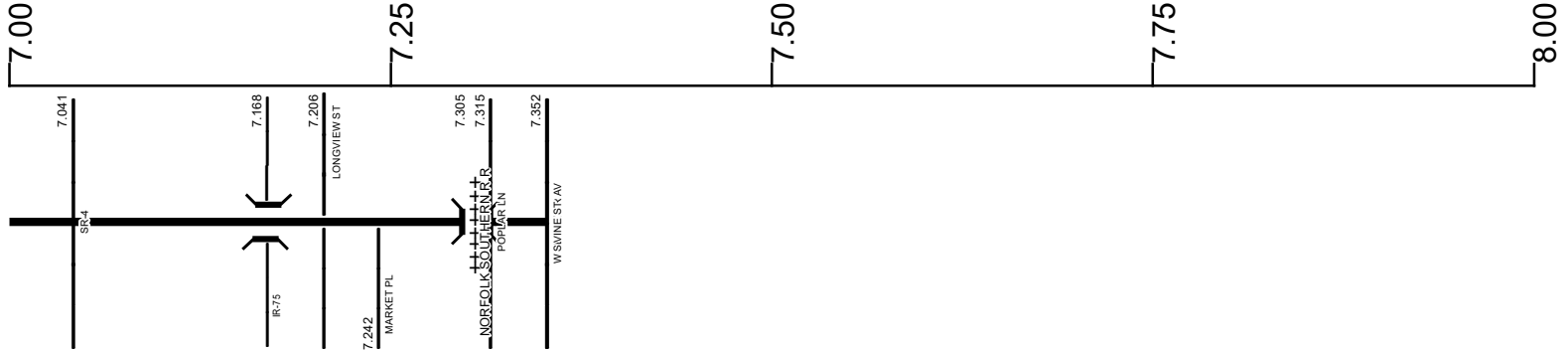
Prepared by
The Ohio Department of Transportation
Office of Technical Services
Roadway Information

SHAMSR00561**C

State True Log

7.352

County True Log



Surface Type & Width (Left / Right)

G (31'/32')	G 36'
6.689 - 7.168	7.168 - 7.352

Base Type (Left / Right)

P
5.419 - 7.233

Base Type (Left / Right)

P
7.273 - 7.352

Shoulder Type & Width (Left / Right)

1 (0'/0')
4.65 - 7.352

Through Lanes

4
5.419 - 7.352

Street Name

E SEYMOUR AVE
5.42 - 7.352

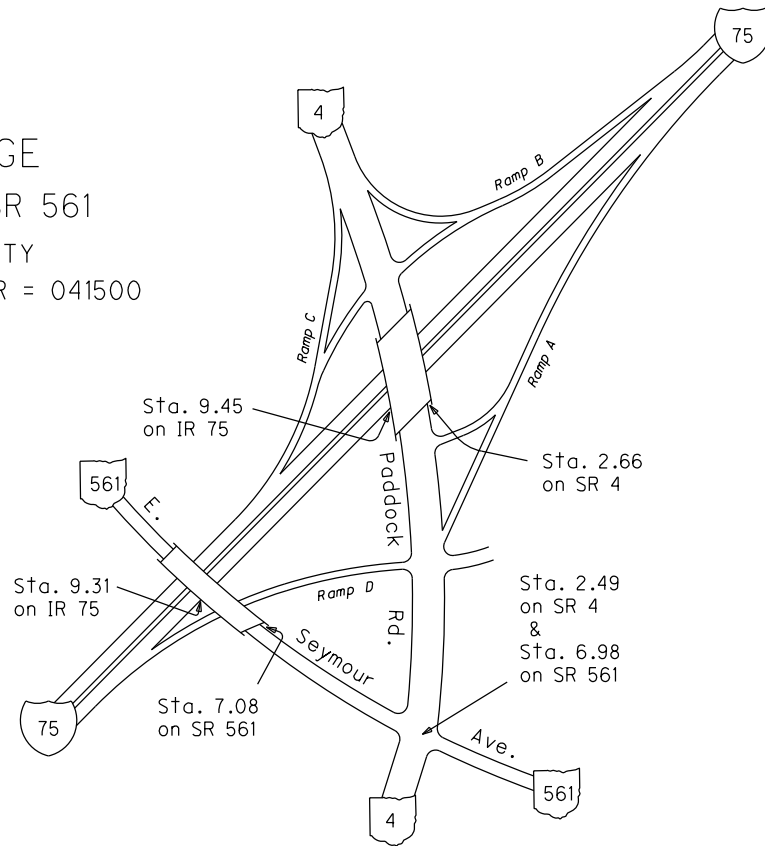
- | | | | |
|---------------------|-------------------|----------------------|--------------|
| Non-divided Highway | Bridge (on route) | Railroad (at grade) | Intersection |
| Divided Highway | Underpass | Railroad (underpass) | |
| Secondary Segment | Overpass | Railroad (overpass) | |
| Corporation | | | |

Created on: 6/30/2025

transportation.ohio.gov

Prepared by
The Ohio Department of Transportation
Office of Technical Services
Roadway Information

INTERCHANGE
IR 75, SR 4 & SR 561
HAMILTON COUNTY
INTERCHANGE ID NUMBER = 041500



Historical Project List for SHAMSR00561**C

Begin Measure	End Measure	Project ID Number	Construction Completion Date	Treatment Category	Treatment Type
0.000	1.878	91310	11-2015	Minor Rehabilitation	50-AC Overlay w/o Rpr
0.155	0.572	93421	7-2013	Preventive Maintenance	30-Microsurfacing
2.080	2.647	22833	10-2004	Minor Rehabilitation	60-AC Overlay w/Rpr
3.113	3.840	21889	9-2002	Minor Rehabilitation	60-AC Overlay w/Rpr
5.420	6.575	22833	10-2004	Minor Rehabilitation	60-AC Overlay w/Rpr

Roadway Codes

Access Control Journalized

- F - Full Access Control
- L - Limited Access Control
- N - No Access Control

Access Control Operational

- 1 - Full Access Control
- 2 - Partial Access Control
- 3 - No Access Control

Base Type

- F - Crack and Seat
- H - Rubblize and Roll
- I - Aggregate Base 304 or Traffic Compacted
- K - Water Bound Macadam
- L - Bituminous Concrete Mix or Penetration Macadam
- N - Plain Concrete
- P - Reinforced Concrete
- R - Brick (Flexible)
- T - Brick (Rigid)

Direction of Travel

- B - Both (Two-way)
- F - One-way Cardinal
- T - One-way Non-cardinal

Facility Type

- 1 - One-way Roadway
- 2 - Two-way Roadway
- 4 - Ramp
- 5 - Non-mainline
- 6 - Non-inventory Direction
- 7 - Planned / Unbuilt

Historical Federal Aid Indicator

- N - Not a FAP Route
- Y - FAP Route

Functional Classification

- 01 - Interstate
- 02 - Principal Arterial (Freeways)
- 03 - Principal Arterial (Other)
- 04 - Minor Arterial
- 05 - Major Collector
- 06 - Minor Collector
- 07 - Local

Leave / Reenter Indicator

- Y - Route leaves/reenters at this point
- N - Route does not leave/reenter at this point

Median Type

- 1 - None
- 2 - Unprotected
- 3 - Curbed
- 4 - Positive Barrier (Unspecified)
- 5 - Positive Barrier (Flexible)
- 6 - Positive Barrier (Semi-rigid)
- 7 - Positive Barrier (Rigid)

NHS

- N - National Highway System
- H - Congressional Corridor
- 2 - Major Airport
- 3 - Major Port Facility
- 4 - Major Amtrak Station
- 5 - Major Rail / Truck Terminal
- 6 - Major Intercity Bus Terminal
- 7 - Major Public Transit / Multi-modal Passenger Terminal
- 8 - Major Pipeline Terminal
- 9 - Major Ferry Terminal

Priority System

- G - General
- P - Priority System
- U - Urban

Scenic Byway Code

- A - All American Road
- N - National Scenic Byway
- S - State Scenic Byway

Shoulder Type

- 1 - None
- 2 - Surfaced shoulder exists (bituminous concrete {AC})
- 3 - Surfaced shoulder exists (Portland Cement Concrete {PCC})
- 4 - Stabilized shoulder exists (gravel or other granular material)
- 5 - Combination shoulder exists (two or more surface types)
- 6 - Earth shoulder exists
- 7 - Barrier curb exists; no shoulder in front of curb

Surface Type

- A - Combination
- B - Brick
- C - Continuous Reinforced Concrete
- D - Reinforced Concrete
- E - Plain Concrete
- G - Bituminous Concrete
- I - Chipseal on Granular
- K - Open Graded Bituminous
- L - Chipseal or Micro
- M - Gravel
- U - Unimproved
- X - Right of Way Only