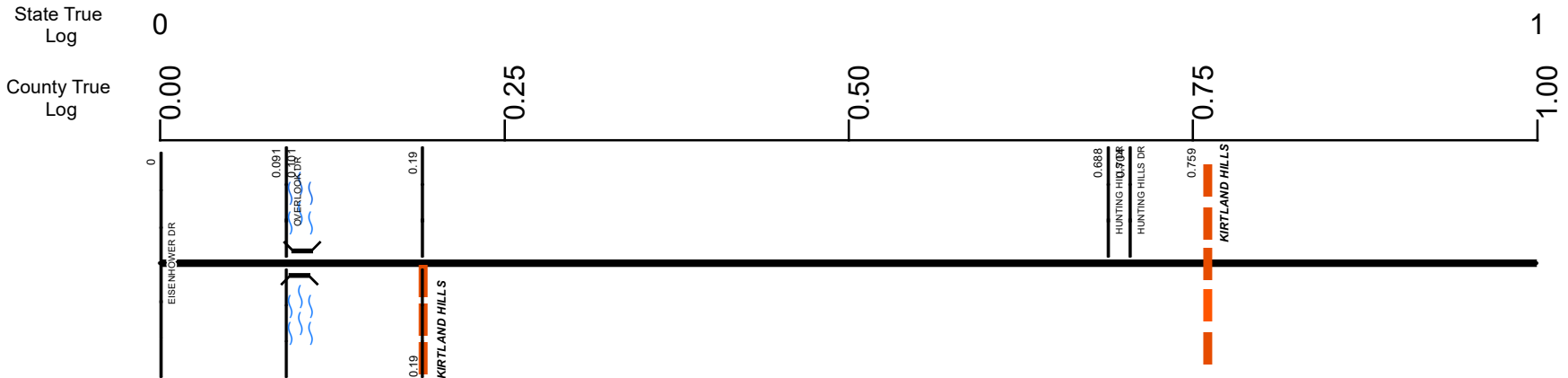


SLAKSR00615**C



Surface Type & Width (Left / Right)

G 36'	G 24'	G (16'/6')
0 - 0.061	0.061 - 0.22	0.22 - 1.122

Base Type (Left / Right)

L	P / I
0 - 0.22	0.22 - 1.122

Shoulder Type & Width (Left / Right)

1 (0'/0')	2 (2'/2')
0 - 0.22	0.22 - 1.332

Resurface Year

2022
0.761 - 1.322

Through Lanes

2
0 - 2.09

Street Name

CHILLICOTHE RD
0 - 1.332

- Non-divided Highway
- Divided Highway
- Secondary Segment
- Corporation
- Bridge (on route)
- Underpass
- Overpass
- Railroad (at grade)
- Railroad (underpass)
- Railroad (overpass)
- Intersection

Created on: 7/1/2025

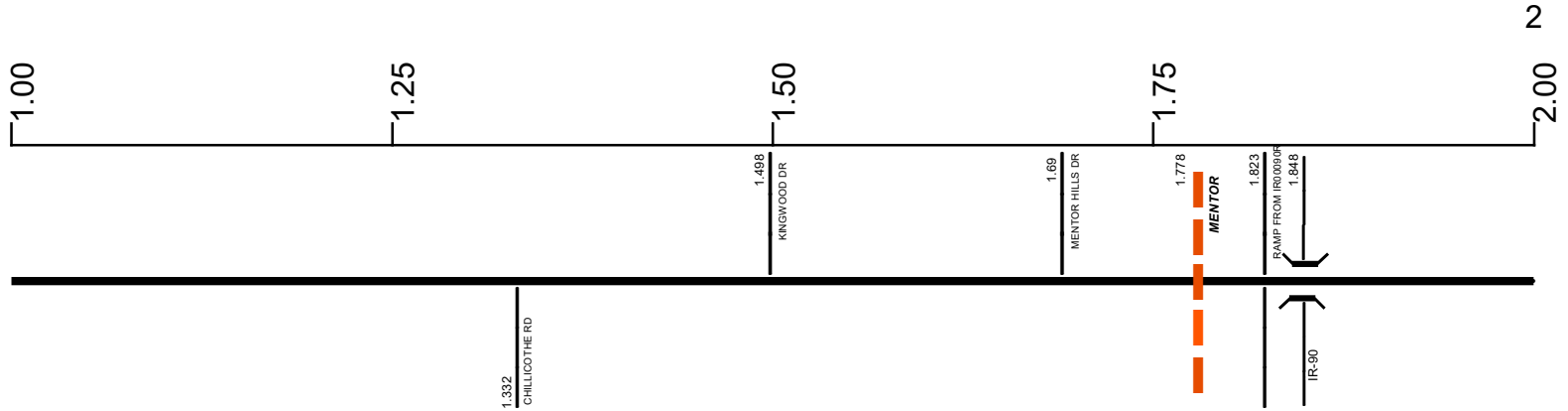


transportation.ohio.gov
 Prepared by
 The Ohio Department of Transportation
 Office of Technical Services
 Roadway Information

SLAKSR00615**C

State True Log

County True Log



Surface Type & Width (Left / Right)

G (16'6")	G 24'	D 24'	D 28'	D 40'
0.22 - 1.122	1.122 - 1.322		1.332 - 1.848	1.848 - 2.09

Base Type (Left / Right)

P/I	L
0.22 - 1.122	1.122 - 1.322

Shoulder Type & Width (Left / Right)

2 (2'2")	1 (0'0")
0.22 - 1.332	1.332 - 4.903

Resurface Year

2022
0.761 - 1.322

Through Lanes

2
0 - 2.09

Street Name

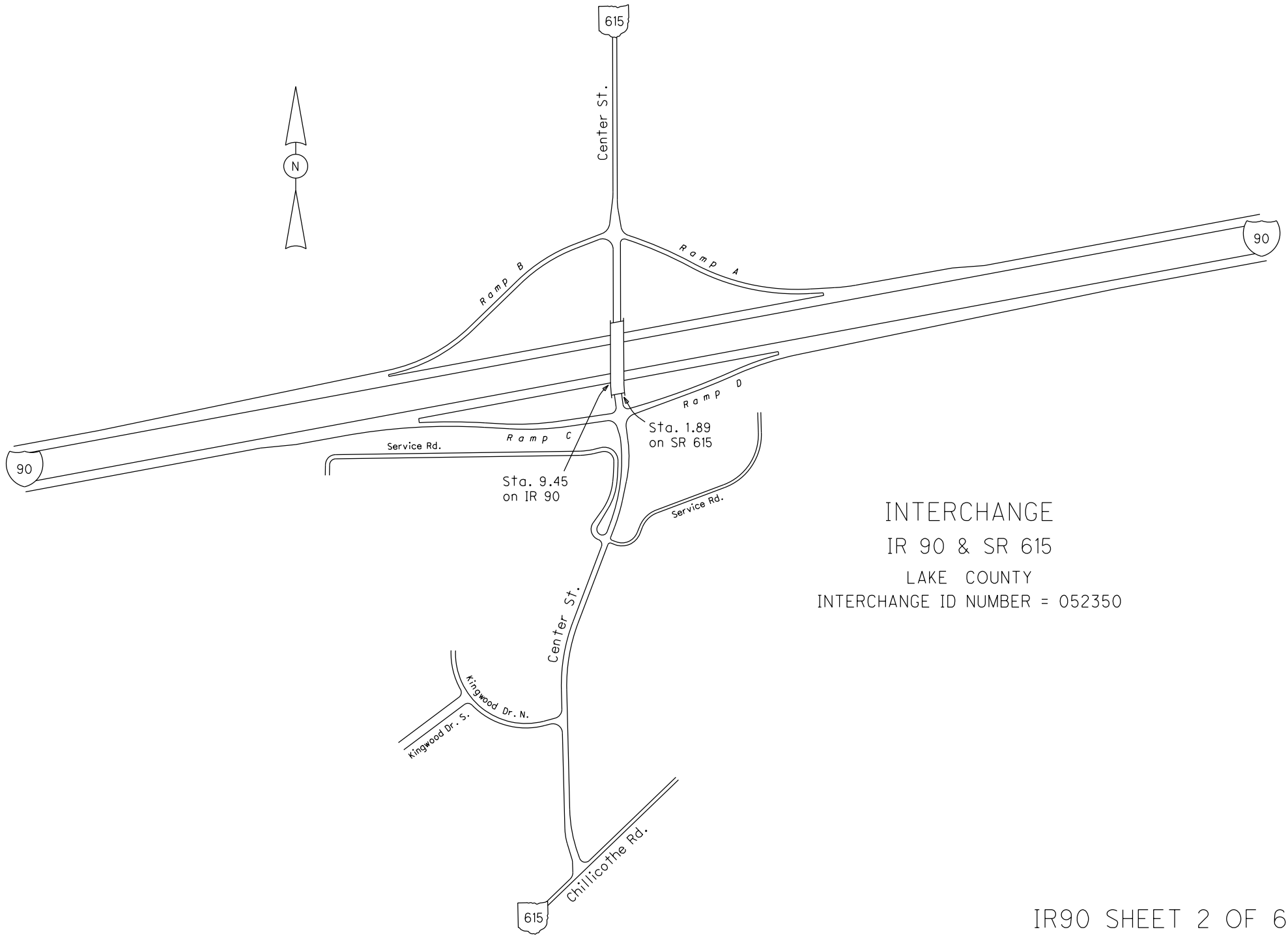
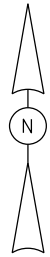
CHILlicothe RD	CENTER ST
0 - 1.332	1.332 - 5.584

- Non-divided Highway
- Divided Highway
- Secondary Segment
- Corporation
- Bridge (on route)
- Underpass
- Overpass
- Railroad (at grade)
- Railroad (underpass)
- Railroad (overpass)
- Intersection

Created on: 7/1/2025



transportation.ohio.gov
 Prepared by
 The Ohio Department of Transportation
 Office of Technical Services
 Roadway Information

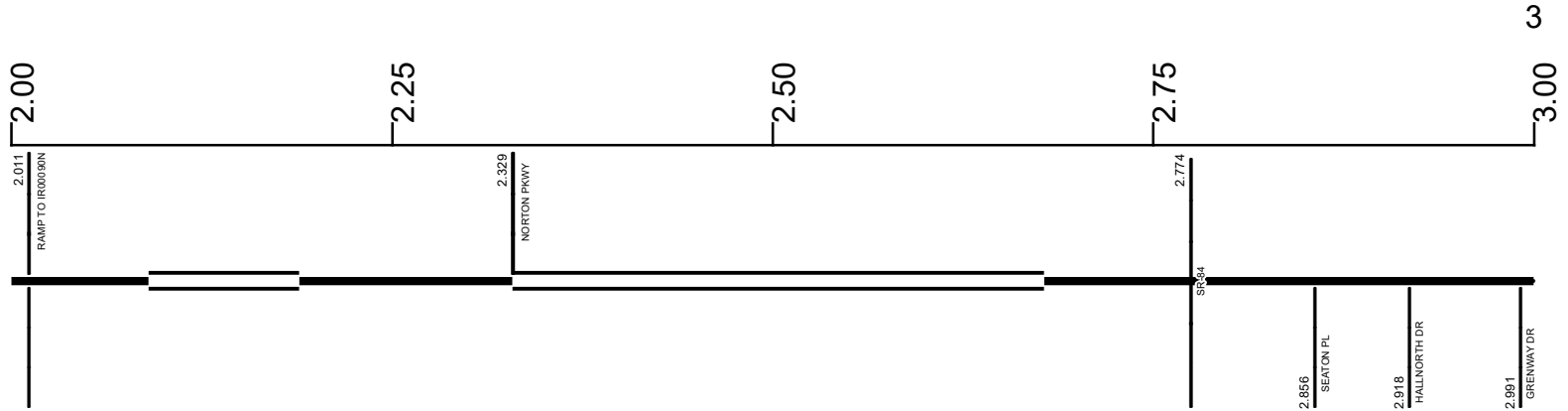


INTERCHANGE
IR 90 & SR 615
LAKE COUNTY
INTERCHANGE ID NUMBER = 052350

SLAKSR00615**C

State True Log

County True Log



Surface Type & Width (Left / Right)

D 40'	D 52'	D 60'	D 48'
1.848 - 2.09	2.09 - 2.678	2.678 - 2.774	2.774 - 3.219

Shoulder Type & Width (Left / Right)

1 (0'/0')
1.332 - 4.903

Median Type and Width

3 (10')
2.09 - 2.189

Median Type and Width

3 (10')
2.329 - 2.678

Through Lanes

2	4
0 - 2.09	2.09 - 4.903

Street Name

	CENTER ST
	1.332 - 5.584

- Non-divided Highway
 Bridge (on route)
 Railroad (at grade)
 Intersection
- Divided Highway
 Underpass
 Railroad (underpass)
- Secondary Segment
 Overpass
 Railroad (overpass)
- Corporation**

Created on: 7/1/2025

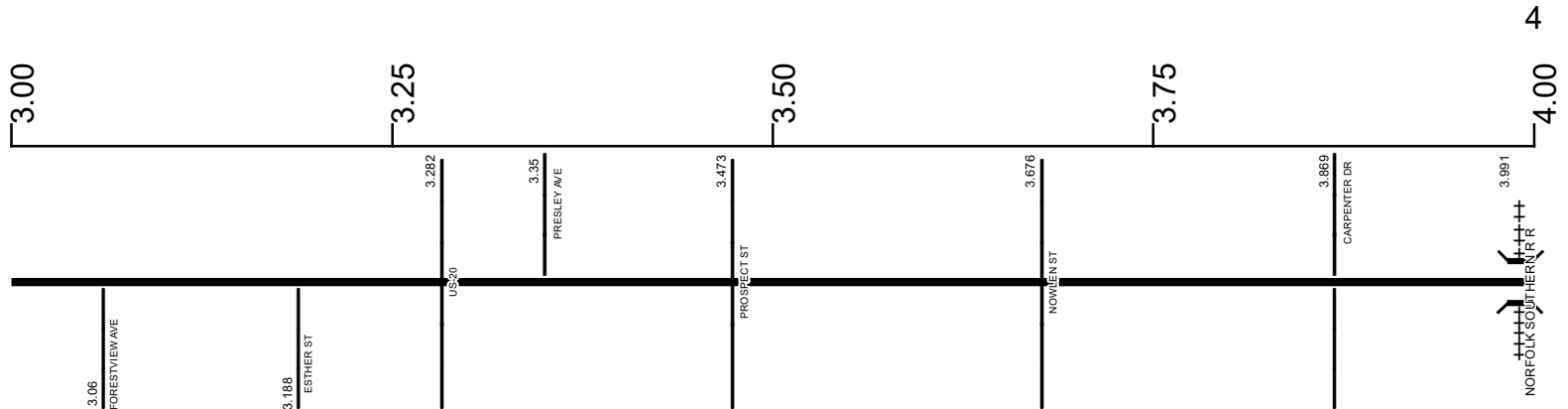
transportation.ohio.gov

Prepared by
The Ohio Department of Transportation
Office of Technical Services
Roadway Information

SLAKSR00615**C

State True Log

County True Log



Surface Type & Width (Left / Right)

D 48'	G 50'
2.774 - 3.219	3.219 - 4.499

Base Type (Left / Right)

P
3.219 - 4.499

Shoulder Type & Width (Left / Right)

1 (0/0')
1.332 - 4.903

Through Lanes

4
2.09 - 4.903

Street Name

CENTER ST
1.332 - 5.584

- Non-divided Highway
- Divided Highway
- Secondary Segment
- Corporation
- Bridge (on route)
- Underpass
- Overpass
- Railroad (at grade)
- Railroad (underpass)
- Railroad (overpass)
- Intersection

Created on: 7/1/2025



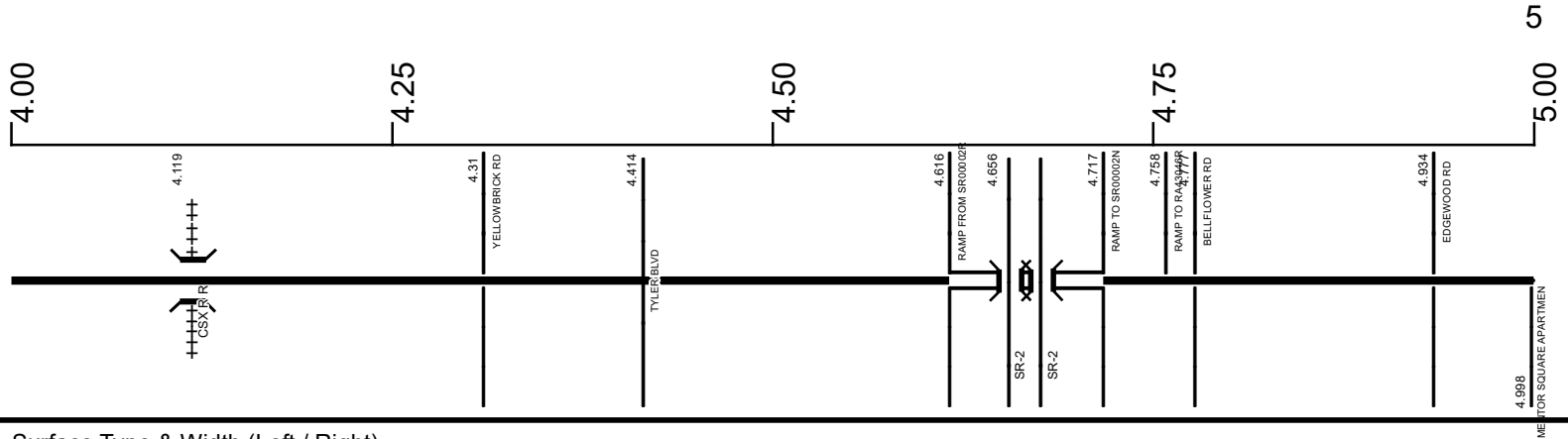
transportation.ohio.gov

Prepared by
The Ohio Department of Transportation
Office of Technical Services
Roadway Information

SLAKSR00615**C

State True Log

County True Log



Surface Type & Width (Left / Right)	
G 50'	G (50'/26') G 100' G (35'/41') G (50'/26') G 50' G (16'/17')
3.219 - 4.499	4.499 - 4.616 4.616 - 4.656 4.656 - 4.717 4.717 - 4.85 4.85 - 4.903 4.903 - 5.672
Base Type (Left / Right)	
P	P / N P P / L
3.219 - 4.499	4.499 - 4.85 4.85 - 4.903 4.903 - 6.863
Shoulder Type & Width (Left / Right)	
1 (0'/0')	2 (2'/2')
1.332 - 4.903	4.903 - 6.863
Median Type and Width	
	3 (5')
	4.616 - 4.717
Resurface Year	
	2021
	4.777 - 5.584
Through Lanes	
4	2
2.09 - 4.903	4.903 - 6.863
Street Name	
CENTER ST	
1.332 - 5.584	

- Non-divided Highway
- Divided Highway
- Secondary Segment
- Corporation
- Bridge (on route)
- Underpass
- Overpass
- Railroad (at grade)
- Railroad (underpass)
- Railroad (overpass)
- Intersection

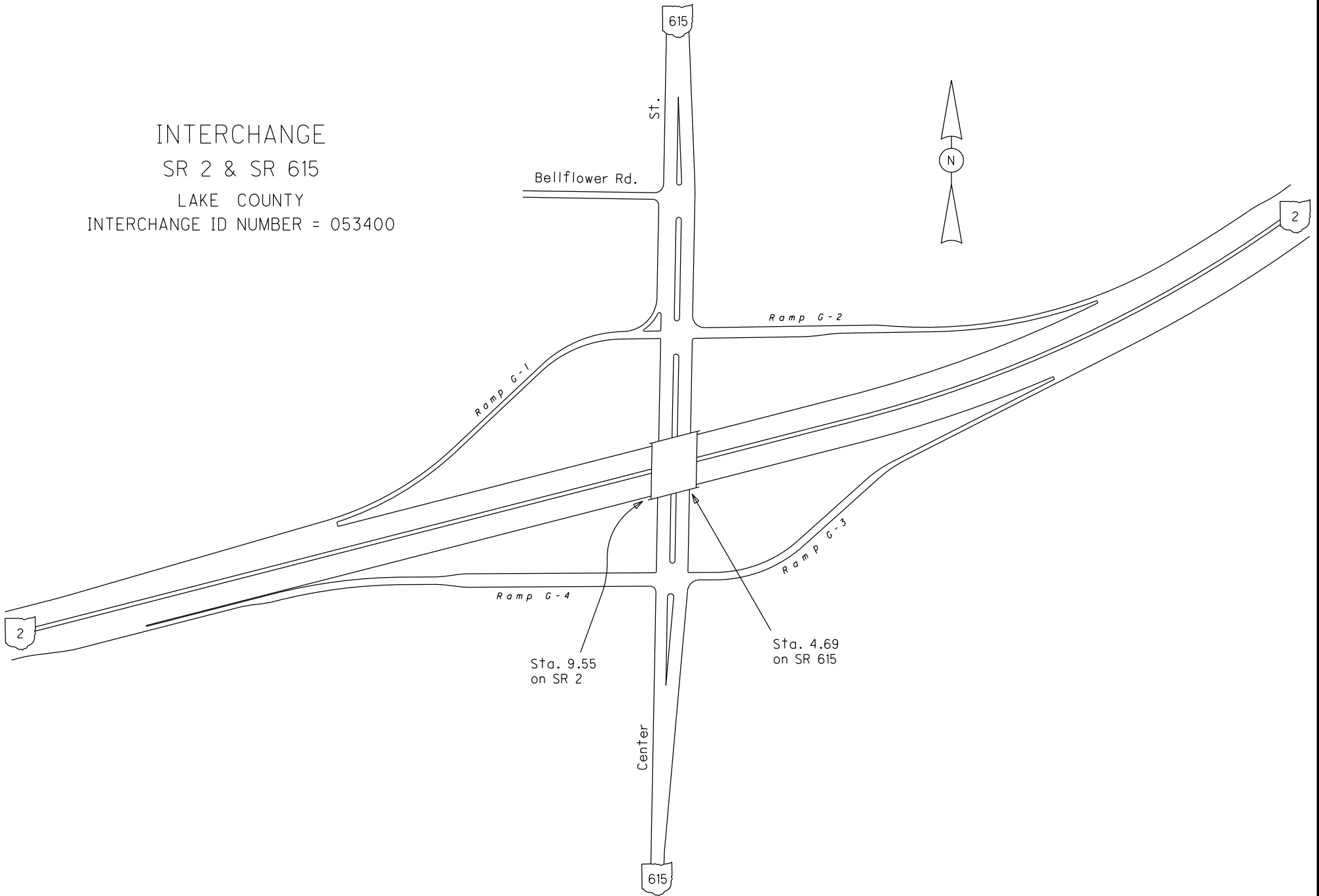
Created on: 7/1/2025



transportation.ohio.gov

Prepared by
The Ohio Department of Transportation
Office of Technical Services
Roadway Information

INTERCHANGE
SR 2 & SR 615
LAKE COUNTY
INTERCHANGE ID NUMBER = 053400



SLAKSR00615**C

State True Log

6

County True Log



Surface Type & Width (Left / Right)

G (16'/17')	G (16'/9')
4.903 - 5.672	5.672 - 6.863

Base Type (Left / Right)

	P / L
	4.903 - 6.863

Shoulder Type & Width (Left / Right)

	2 (2'/2')
	4.903 - 6.863

Resurface Year

2021
4.777 - 5.584

Through Lanes

	2
	4.903 - 6.863

Street Name

CENTER ST	MUNSON RD
1.332 - 5.584	5.584 - 6.863

- Non-divided Highway
- Divided Highway
- Secondary Segment
- Corporation
- Bridge (on route)
- Underpass
- Overpass
- Railroad (at grade)
- Railroad (underpass)
- Railroad (overpass)
- Intersection

Created on: 7/1/2025

transportation.ohio.gov

Prepared by
The Ohio Department of Transportation
Office of Technical Services
Roadway Information

SLAKSR00615**C

State True Log

6.863

County True Log



Surface Type & Width (Left / Right)

G (16'/9')
5.672 - 6.863

Base Type (Left / Right)

P / L
4.903 - 6.863

Shoulder Type & Width (Left / Right)

2 (2'/2')
4.903 - 6.863

Through Lanes

2
4.903 - 6.863

Street Name

MUNSON RD
5.584 - 6.863

- Non-divided Highway
- Divided Highway
- Secondary Segment
- Corporation
- Bridge (on route)
- Underpass
- Overpass
- Railroad (at grade)
- Railroad (underpass)
- Railroad (overpass)
- Intersection

Created on: 7/1/2025



transportation.ohio.gov
 Prepared by
 The Ohio Department of Transportation
 Office of Technical Services
 Roadway Information

Historical Project List for SLAKSR00615**C

Begin Measure	End Measure	Project ID Number	Construction Completion Date	Treatment Category	Treatment Type
0.160	0.830	21514	9-2002	Minor Rehabilitation	60-AC Overlay w/Rpr
0.760	1.320	103305	10-2022	Minor Rehabilitation	38-Fine Poly AC Overlay
1.200	1.770	12790	9-2002	Major Rehabilitation	100-New Flexible Pvmt
1.770	2.760	9331	6-2004	New Construction	200-New Pavement
2.760	3.260	9332	12-2003	New Construction	200-New Pavement
3.200	4.300	24860	9-2007	Minor Rehabilitation	60-AC Overlay w/Rpr
4.870	5.620	89258	11-2020	Minor Rehabilitation	60-AC Overlay w/Rpr
5.620	6.870	92355	5-2014	Minor Rehabilitation	60-AC Overlay w/Rpr
5.660	6.770	11418	10-2001	New Construction	200-New Pavement

Roadway Codes

Access Control Journalized

- F - Full Access Control
- L - Limited Access Control
- N - No Access Control

Access Control Operational

- 1 - Full Access Control
- 2 - Partial Access Control
- 3 - No Access Control

Base Type

- F - Crack and Seat
- H - Rubblize and Roll
- I - Aggregate Base 304 or Traffic Compacted
- K - Water Bound Macadam
- L - Bituminous Concrete Mix or Penetration Macadam
- N - Plain Concrete
- P - Reinforced Concrete
- R - Brick (Flexible)
- T - Brick (Rigid)

Direction of Travel

- B - Both (Two-way)
- F - One-way Cardinal
- T - One-way Non-cardinal

Facility Type

- 1 - One-way Roadway
- 2 - Two-way Roadway
- 4 - Ramp
- 5 - Non-mainline
- 6 - Non-inventory Direction
- 7 - Planned / Unbuilt

Historical Federal Aid Indicator

- N - Not a FAP Route
- Y - FAP Route

Functional Classification

- 01 - Interstate
- 02 - Principal Arterial (Freeways)
- 03 - Principal Arterial (Other)
- 04 - Minor Arterial
- 05 - Major Collector
- 06 - Minor Collector
- 07 - Local

Leave / Reenter Indicator

- Y - Route leaves/reenters at this point
- N - Route does not leave/reenter at this point

Median Type

- 1 - None
- 2 - Unprotected
- 3 - Curbed
- 4 - Positive Barrier (Unspecified)
- 5 - Positive Barrier (Flexible)
- 6 - Positive Barrier (Semi-rigid)
- 7 - Positive Barrier (Rigid)

NHS

- N - National Highway System
- H - Congressional Corridor
- 2 - Major Airport
- 3 - Major Port Facility
- 4 - Major Amtrak Station
- 5 - Major Rail / Truck Terminal
- 6 - Major Intercity Bus Terminal
- 7 - Major Public Transit / Multi-modal Passenger Terminal
- 8 - Major Pipeline Terminal
- 9 - Major Ferry Terminal

Priority System

- G - General
- P - Priority System
- U - Urban

Scenic Byway Code

- A - All American Road
- N - National Scenic Byway
- S - State Scenic Byway

Shoulder Type

- 1 - None
- 2 - Surfaced shoulder exists (bituminous concrete {AC})
- 3 - Surfaced shoulder exists (Portland Cement Concrete {PCC})
- 4 - Stabilized shoulder exists (gravel or other granular material)
- 5 - Combination shoulder exists (two or more surface types)
- 6 - Earth shoulder exists
- 7 - Barrier curb exists; no shoulder in front of curb

Surface Type

- A - Combination
- B - Brick
- C - Continuous Reinforced Concrete
- D - Reinforced Concrete
- E - Plain Concrete
- G - Bituminous Concrete
- I - Chipseal on Granular
- K - Open Graded Bituminous
- L - Chipseal or Micro
- M - Gravel
- U - Unimproved
- X - Right of Way Only