



# SLOGSR00366\*\*C

State True  
Log

2

County True  
Log

1:00

1:25

1:50

1:75

2:00



- |                     |                   |                      |              |
|---------------------|-------------------|----------------------|--------------|
| Non-divided Highway | Bridge (on route) | Railroad (at grade)  | Intersection |
| Divided Highway     | Underpass         | Railroad (underpass) |              |
| Secondary Segment   | Overpass          | Railroad (overpass)  |              |
| <b>Corporation</b>  |                   |                      |              |

Created on: 7/1/2025

transportation.ohio.gov

Prepared by  
The Ohio Department of Transportation  
Office of Technical Services  
Roadway Information

# SLOGSR00366\*\*C

State True Log

3

County True Log

2:00

2:25

2:50

2:75

3:00



- |                     |                   |                      |              |
|---------------------|-------------------|----------------------|--------------|
| Non-divided Highway | Bridge (on route) | Railroad (at grade)  | Intersection |
| Divided Highway     | Underpass         | Railroad (underpass) |              |
| Secondary Segment   | Overpass          | Railroad (overpass)  |              |
| <b>Corporation</b>  |                   |                      |              |

Created on: 7/1/2025

transportation.ohio.gov

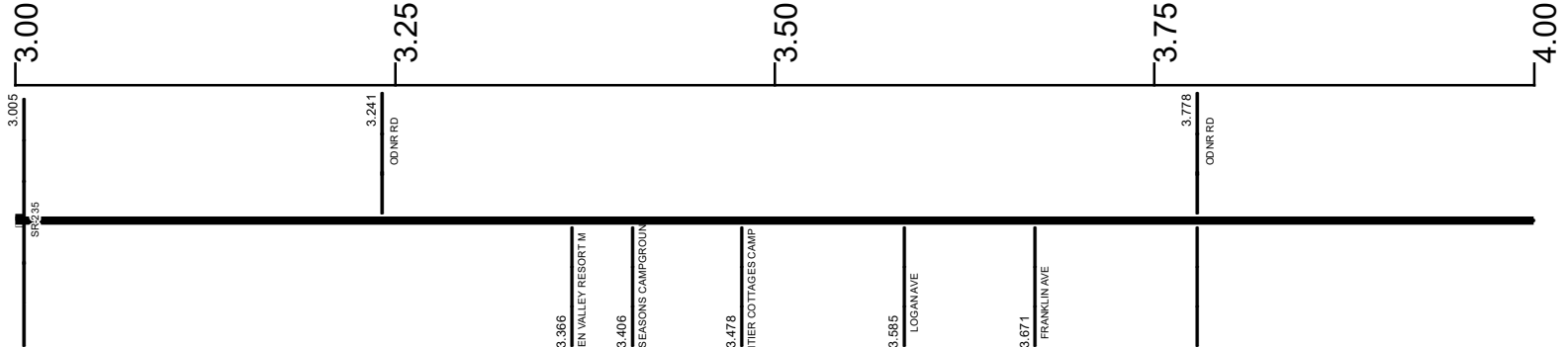
Prepared by  
The Ohio Department of Transportation  
Office of Technical Services  
Roadway Information

# SLOGSR00366\*\*C

State True Log

4

County True Log



Surface Type & Width (Left / Right)

G 24'  
3.005 - 4.274

Base Type (Left / Right)

I  
3.005 - 4.274

Shoulder Type & Width (Left / Right)

2 (10'/10')  
3.005 - 4.274

Through Lanes

2  
3.005 - 9.834

Street Name

SR 366  
3.005 - 4.093

- Non-divided Highway
- Divided Highway
- Secondary Segment
- Corporation
- Bridge (on route)
- Underpass
- Overpass
- Railroad (at grade)
- Railroad (underpass)
- Railroad (overpass)
- Intersection

Created on: 7/1/2025

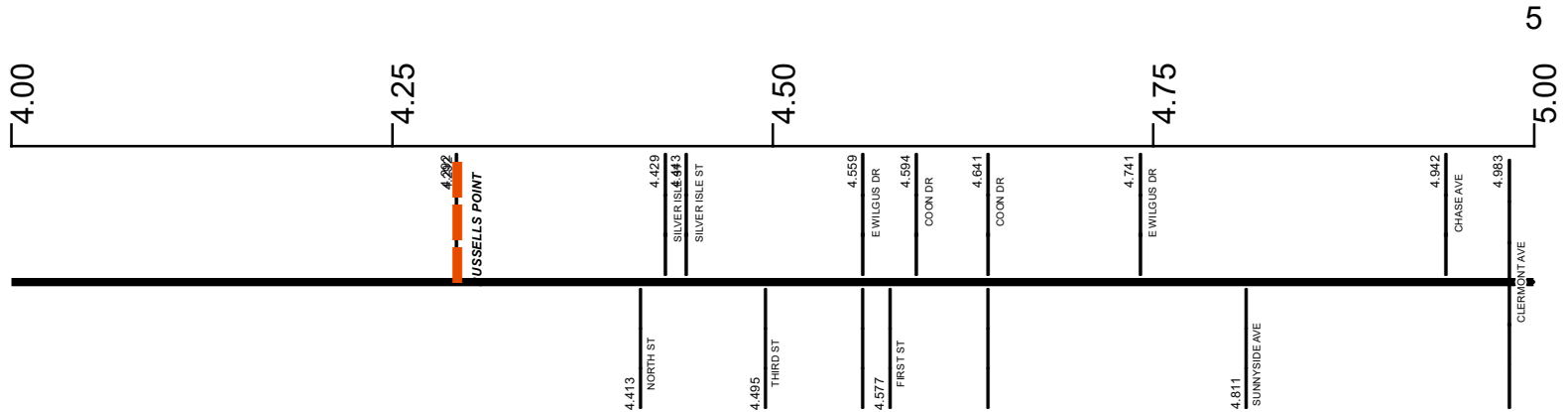
transportation.ohio.gov

Prepared by  
The Ohio Department of Transportation  
Office of Technical Services  
Roadway Information

# SLOGSR00366\*\*C

State True Log

County True Log



**Surface Type & Width (Left / Right)**

G 24'	G (22'1/2')	G 22'	G (22'10')
3.005 - 4.274	4.274 - 4.313	4.313 - 4.888	4.888 - 5.116

**Base Type (Left / Right)**

I	N / L	N	N / I
3.005 - 4.274	4.274 - 4.313	4.313 - 4.888	4.888 - 5.116

**Shoulder Type & Width (Left / Right)**

2 (10'10')	2 (4'4')	2 (1'1/2')	1 (0'0')
3.005 - 4.274	4.274 - 4.313	4.313 - 4.888	4.888 - 5.116

**Through Lanes**

2
3.005 - 9.834

**Street Name**

SR 366	W MAIN ST	E MAIN ST
3.005 - 4.093	4.093 - 4.811	4.811 - 5.306

- Non-divided Highway
- Divided Highway
- Secondary Segment
- Corporation
- Bridge (on route)
- Underpass
- Overpass
- Railroad (at grade)
- Railroad (underpass)
- Railroad (overpass)
- Intersection

Created on: 7/1/2025

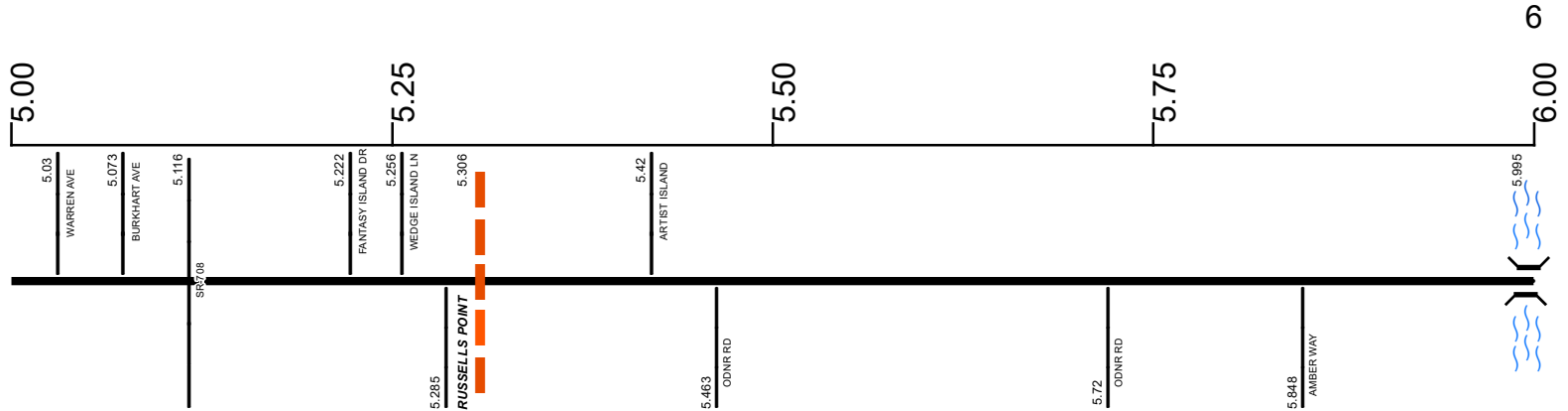
transportation.ohio.gov

Prepared by  
The Ohio Department of Transportation  
Office of Technical Services  
Roadway Information

# SLOGSR00366\*\*C

State True Log

County True Log



**Surface Type & Width (Left / Right)**

G (22'10") 4.888 - 5.116	G 20' 5.116 - 5.895	G (20'4") 5.895 - 9.834
-----------------------------	------------------------	----------------------------

**Base Type (Left / Right)**

N / I 4.888 - 5.116	N 5.116 - 5.895	N / L 5.895 - 9.834
------------------------	--------------------	------------------------

**Shoulder Type & Width (Left / Right)**

1 (0'0") 4.888 - 5.116	2 (1'2") 5.116 - 5.316	2 (2'2") 5.316 - 5.895	2 (6'6") 5.895 - 9.365
---------------------------	---------------------------	---------------------------	---------------------------

**Through Lanes**

2
3.005 - 9.834

**Street Name**

E MAIN ST 4.811 - 5.306	SR 366 5.306 - 9.834
----------------------------	-------------------------

- Non-divided Highway
- Divided Highway
- Secondary Segment
- Corporation
- Bridge (on route)
- Underpass
- Overpass
- Railroad (at grade)
- Railroad (underpass)
- Railroad (overpass)
- Intersection

Created on: 7/1/2025

transportation.ohio.gov

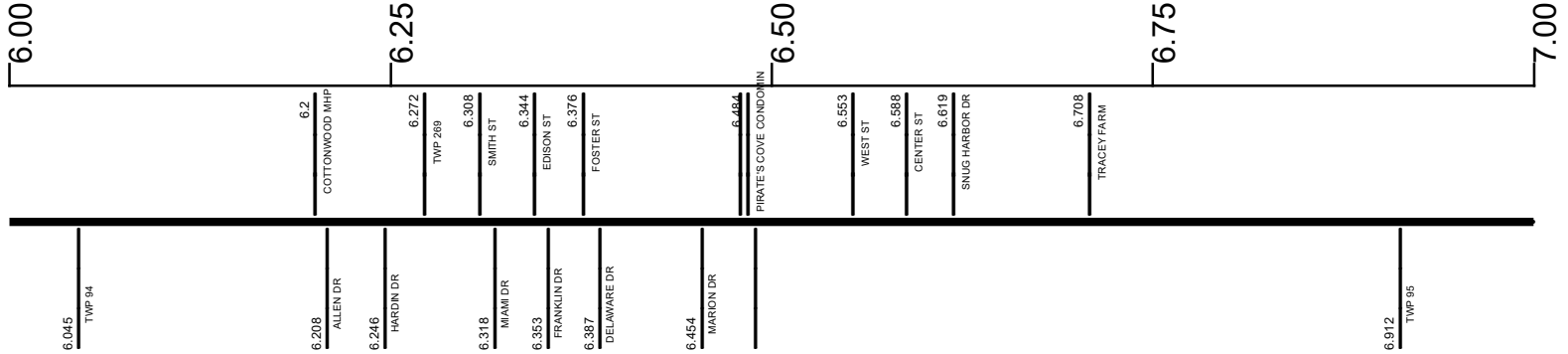
Prepared by  
The Ohio Department of Transportation  
Office of Technical Services  
Roadway Information

# SLOGSR00366\*\*C

State True Log

7

County True Log



Surface Type & Width (Left / Right)	G (20'4')
	5.895 - 9.834
Base Type (Left / Right)	N / L
	5.895 - 9.834
Shoulder Type & Width (Left / Right)	2 (6'6')
	5.895 - 9.365
Resurface Year	2024
	6.045 - 9.365
Through Lanes	2
	3.005 - 9.834
Street Name	SR 366
	5.306 - 9.834

Non-divided Highway	Bridge (on route)	Railroad (at grade)	Intersection
Divided Highway	Underpass	Railroad (underpass)	
Secondary Segment	Overpass	Railroad (overpass)	
Corporation			

Created on: 7/1/2025

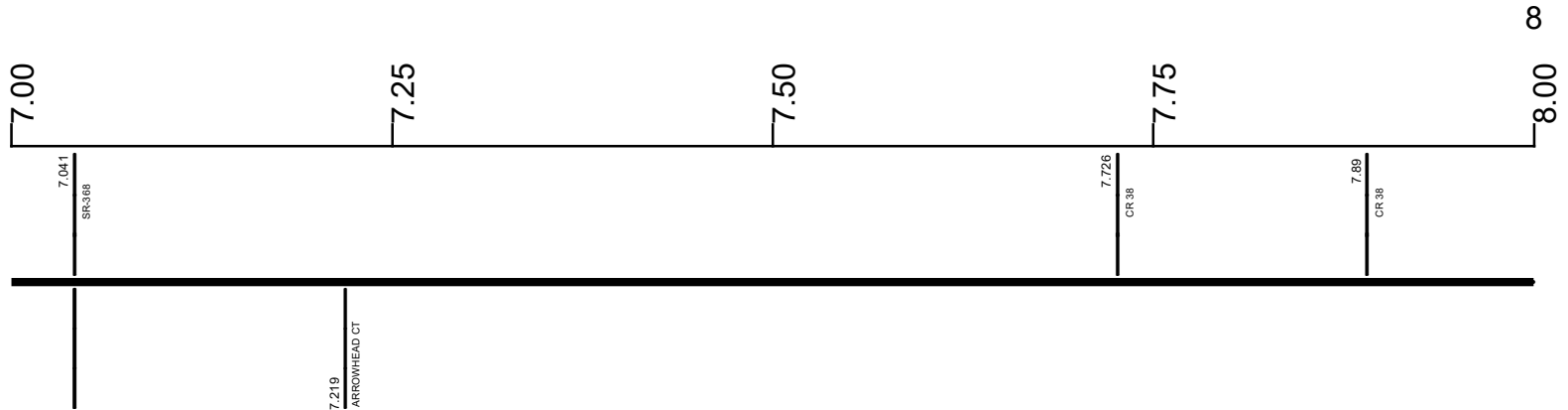


transportation.ohio.gov  
 Prepared by  
 The Ohio Department of Transportation  
 Office of Technical Services  
 Roadway Information

# SLOGSR00366\*\*C

State True Log

County True Log



**Surface Type & Width (Left / Right)**

G (20'4')  
5.895 - 9.834

**Base Type (Left / Right)**

N / L  
5.895 - 9.834

**Shoulder Type & Width (Left / Right)**

2 (6'6")  
5.895 - 9.365

**Resurface Year**

2024  
6.045 - 9.365

**Through Lanes**

2  
3.005 - 9.834

**Street Name**

SR 366  
5.306 - 9.834

- Non-divided Highway
  Bridge (on route)
  Railroad (at grade)
  Intersection
- Divided Highway
  Underpass
  Railroad (underpass)
- Secondary Segment
  Overpass
  Railroad (overpass)
- Corporation**

Created on: 7/1/2025



transportation.ohio.gov

Prepared by  
The Ohio Department of Transportation  
Office of Technical Services  
Roadway Information

# SLOGSR00366\*\*C

State True Log

9

County True Log

8.00

8.25

8.50

8.75

9.00



Surface Type & Width (Left / Right)

G (20/4')  
5.895 - 9.834

Base Type (Left / Right)

N / L  
5.895 - 9.834

Shoulder Type & Width (Left / Right)

2 (6/6)  
5.895 - 9.365

Resurface Year

2024  
6.045 - 9.365

Through Lanes

2  
3.005 - 9.834

Street Name

SR 366  
5.306 - 9.834

- Non-divided Highway
  Bridge (on route)
  Railroad (at grade)
  Intersection
- Divided Highway
  Underpass
  Railroad (underpass)
- Secondary Segment
  Overpass
  Railroad (overpass)
- Corporation**

Created on: 7/1/2025



transportation.ohio.gov

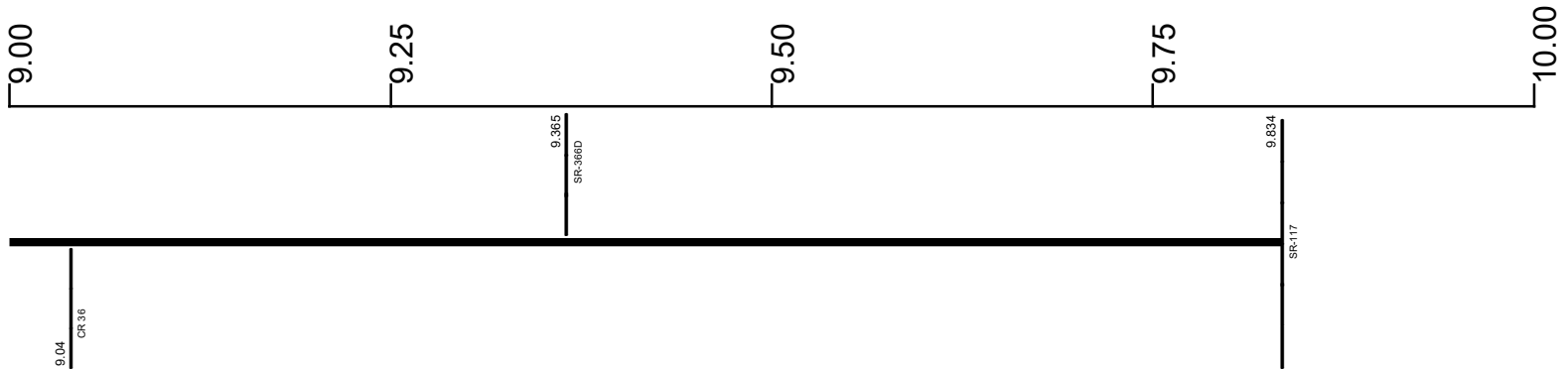
Prepared by  
The Ohio Department of Transportation  
Office of Technical Services  
Roadway Information

# SLOGSR00366\*\*C

State True Log

9.834

County True Log



**Surface Type & Width (Left / Right)**

	G (20'4')
	5.895 - 9.834

**Base Type (Left / Right)**

	N / L
	5.895 - 9.834

**Shoulder Type & Width (Left / Right)**

2 (6'6')	2 (4'4')
5.895 - 9.365	9.365 - 9.834

**Resurface Year**

2024
6.045 - 9.365

**Through Lanes**

	2
	3.005 - 9.834

**Street Name**

	SR 366
	5.306 - 9.834

- |  |   |   |   |
|--|---|---|---|
| <ul style="list-style-type: none"> <li> Non-divided Highway</li> <li> Divided Highway</li> <li> Secondary Segment</li> <li> Corporation</li> </ul> | <ul style="list-style-type: none"> <li> Bridge (on route)</li> <li> Underpass</li> <li> Overpass</li> </ul> | <ul style="list-style-type: none"> <li> Railroad (at grade)</li> <li> Railroad (underpass)</li> <li> Railroad (overpass)</li> </ul> | <ul style="list-style-type: none"> <li> Intersection</li> </ul> |
|--|---|---|---|

Created on: 7/1/2025

transportation.ohio.gov

Prepared by  
The Ohio Department of Transportation  
Office of Technical Services  
Roadway Information

## Historical Project List for SLOGSR00366\*\*C

Begin Measure	End Measure	Project ID Number	Construction Completion Date	Treatment Category	Treatment Type
0.000	0.919	77426	7-2009	Minor Rehabilitation	50-AC Overlay w/o Rpr
6.025	9.834	25133	10-2008	Minor Rehabilitation	50-AC Overlay w/o Rpr
6.045	9.834	101054	9-2017	Preventive Maintenance	30-Microsurfacing

# Roadway Codes

## Access Control Journalized

- F - Full Access Control
- L - Limited Access Control
- N - No Access Control

## Access Control Operational

- 1 - Full Access Control
- 2 - Partial Access Control
- 3 - No Access Control

## Base Type

- F - Crack and Seat
- H - Rubblize and Roll
- I - Aggregate Base 304 or Traffic Compacted
- K - Water Bound Macadam
- L - Bituminous Concrete Mix or Penetration Macadam
- N - Plain Concrete
- P - Reinforced Concrete
- R - Brick (Flexible)
- T - Brick (Rigid)

## Direction of Travel

- B - Both (Two-way)
- F - One-way Cardinal
- T - One-way Non-cardinal

## Facility Type

- 1 - One-way Roadway
- 2 - Two-way Roadway
- 4 - Ramp
- 5 - Non-mainline
- 6 - Non-inventory Direction
- 7 - Planned / Unbuilt

## Historical Federal Aid Indicator

- N - Not a FAP Route
- Y - FAP Route

## Functional Classification

- 01 - Interstate
- 02 - Principal Arterial (Freeways)
- 03 - Principal Arterial (Other)
- 04 - Minor Arterial
- 05 - Major Collector
- 06 - Minor Collector
- 07 - Local

## Leave / Reenter Indicator

- Y - Route leaves/reenters at this point
- N - Route does not leave/reenter at this point

## Median Type

- 1 - None
- 2 - Unprotected
- 3 - Curbed
- 4 - Positive Barrier (Unspecified)
- 5 - Positive Barrier (Flexible)
- 6 - Positive Barrier (Semi-rigid)
- 7 - Positive Barrier (Rigid)

## NHS

- N - National Highway System
- H - Congressional Corridor
- 2 - Major Airport
- 3 - Major Port Facility
- 4 - Major Amtrak Station
- 5 - Major Rail / Truck Terminal
- 6 - Major Intercity Bus Terminal
- 7 - Major Public Transit / Multi-modal Passenger Terminal
- 8 - Major Pipeline Terminal
- 9 - Major Ferry Terminal

## Priority System

- G - General
- P - Priority System
- U - Urban

## Scenic Byway Code

- A - All American Road
- N - National Scenic Byway
- S - State Scenic Byway

## Shoulder Type

- 1 - None
- 2 - Surfaced shoulder exists (bituminous concrete {AC})
- 3 - Surfaced shoulder exists (Portland Cement Concrete {PCC})
- 4 - Stabilized shoulder exists (gravel or other granular material)
- 5 - Combination shoulder exists (two or more surface types)
- 6 - Earth shoulder exists
- 7 - Barrier curb exists; no shoulder in front of curb

## Surface Type

- A - Combination
- B - Brick
- C - Continuous Reinforced Concrete
- D - Reinforced Concrete
- E - Plain Concrete
- G - Bituminous Concrete
- I - Chipseal on Granular
- K - Open Graded Bituminous
- L - Chipseal or Micro
- M - Gravel
- U - Unimproved
- X - Right of Way Only