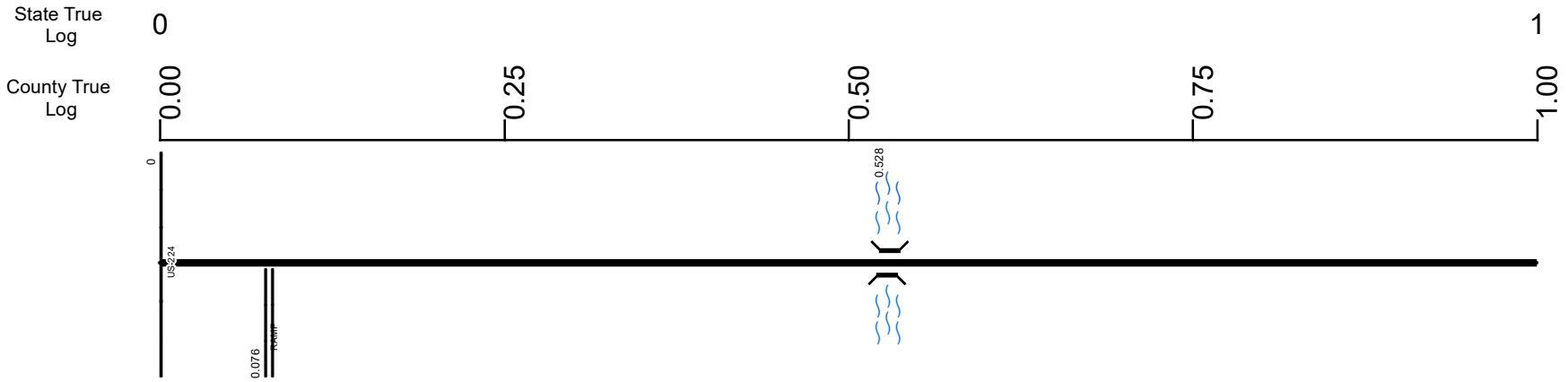


SMEDSR00421**C



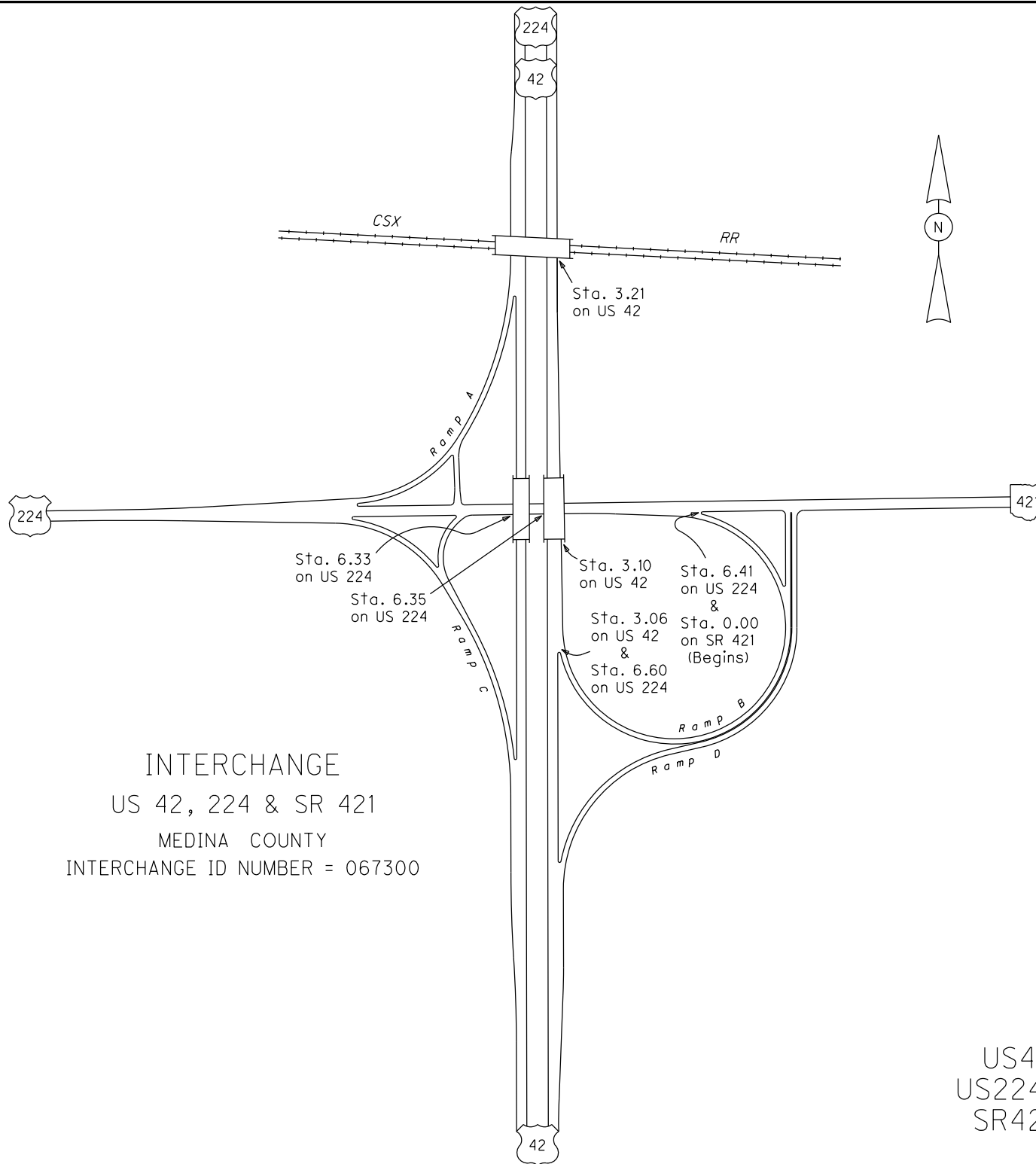
| | |
|--------------------------------------|--------------|
| Surface Type & Width (Left / Right) | G (20'/4') |
| | 0 - 1.098 |
| Base Type (Left / Right) | N / K |
| | 0 - 1.098 |
| Shoulder Type & Width (Left / Right) | 2 (6'/6') |
| | 0 - 1.098 |
| Through Lanes | 2 |
| | 0 - 3.436 |
| Street Name | GREENWICH RD |
| | 0 - 1.098 |

- Non-divided Highway
- Divided Highway
- Secondary Segment
- Corporation
- Bridge (on route)
- Underpass
- Overpass
- Railroad (at grade)
- Railroad (underpass)
- Railroad (overpass)
- Intersection

Created on: 7/2/2025

transportation.ohio.gov

Prepared by
The Ohio Department of Transportation
Office of Technical Services
Roadway Information

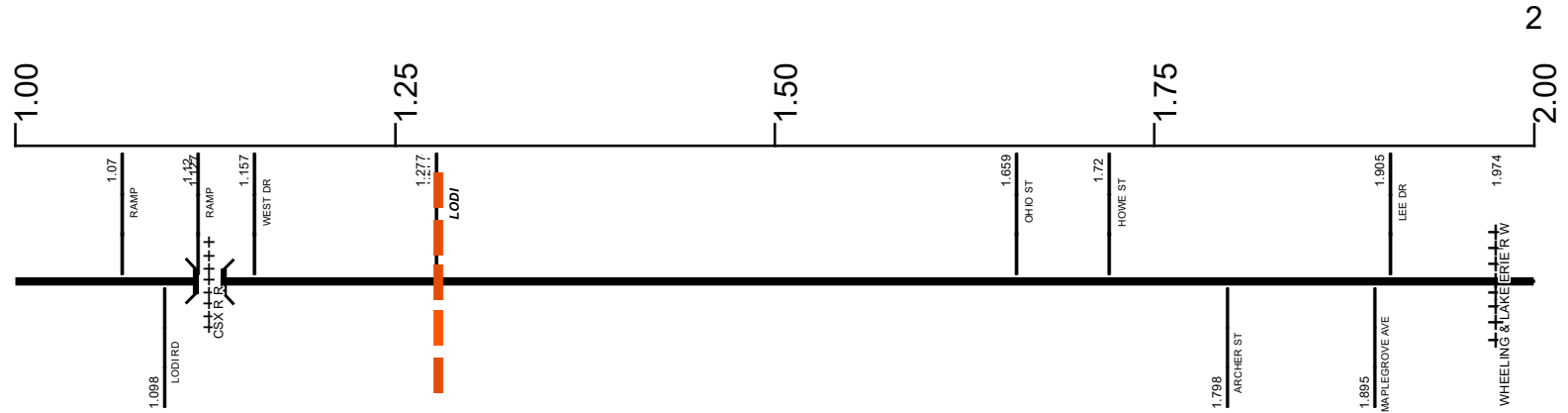


INTERCHANGE
 US 42, 224 & SR 421
 MEDINA COUNTY
 INTERCHANGE ID NUMBER = 067300

US42 SHEET 1 OF 7
 US224 SHEET 2 OF 6
 SR421 SHEET 1 OF 4
 REVISED Jan 2018

SMEDSR00421**C

State True Log
County True Log



Surface Type & Width (Left / Right)

| | | |
|-----------|---------------|---------------|
| G (20'4") | G 26' | G 30' |
| 0 - 1.098 | 1.098 - 1.378 | 1.378 - 2.217 |

Base Type (Left / Right)

| | | | |
|-----------|---------------|---------------|---------------|
| N / K | P | N | T |
| 0 - 1.098 | 1.098 - 1.528 | 1.528 - 1.974 | 1.974 - 2.534 |

Shoulder Type & Width (Left / Right)

| | | |
|-----------|---------------|---------------|
| 2 (6'6") | 2 (7'7") | 2 (4'4") |
| 0 - 1.098 | 1.098 - 1.378 | 1.378 - 2.217 |

Through Lanes

| |
|-----------|
| 2 |
| 0 - 3.436 |

Street Name

| | | |
|--------------|---------------|---------------|
| GREENWICH RD | LODI RD | BANK ST |
| 0 - 1.098 | 1.098 - 1.133 | 1.133 - 2.217 |

- Non-divided Highway
- Divided Highway
- Secondary Segment
- Corporation
- Bridge (on route)
- Underpass
- Overpass
- Railroad (at grade)
- Railroad (underpass)
- Railroad (overpass)
- Intersection

Created on: 7/2/2025

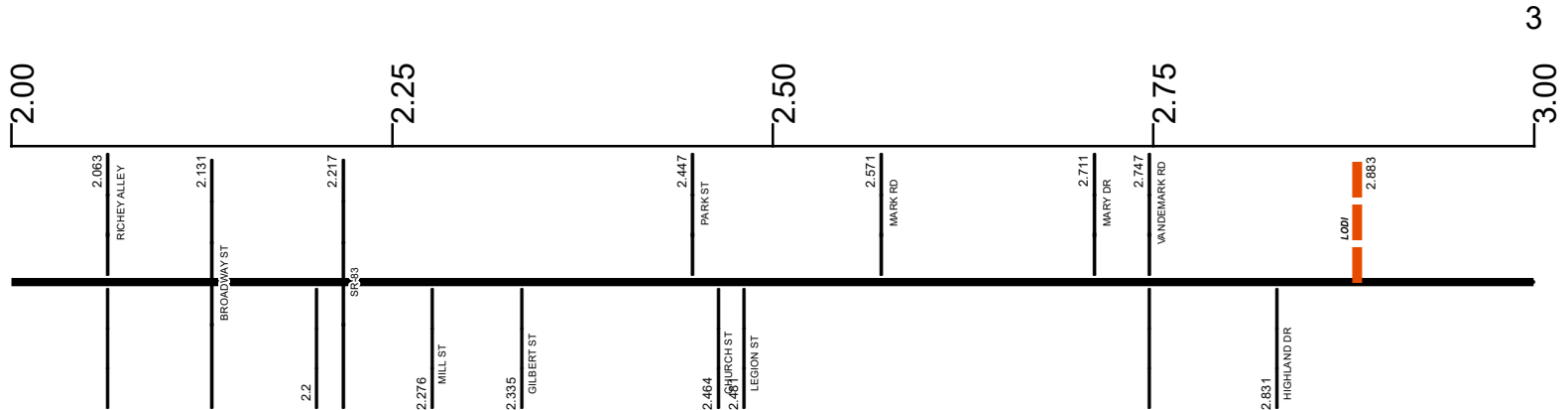
transportation.ohio.gov

Prepared by
The Ohio Department of Transportation
Office of Technical Services
Roadway Information

SMEDSR00421**C

State True Log

County True Log



Surface Type & Width (Left / Right)

| | | |
|---------------|---------------|---------------|
| G 30' | G 26' | G (20'/2') |
| 1.378 - 2.217 | 2.217 - 2.534 | 2.534 - 3.436 |

Base Type (Left / Right)

| | |
|---------------|---------------|
| T | N / L |
| 1.974 - 2.534 | 2.534 - 3.436 |

Shoulder Type & Width (Left / Right)

| | | | |
|---------------|---------------|---------------|---------------|
| 2 (4'/4') | 1 (0'/0') | 2 (5'/5') | 2 (3'/3') |
| 1.378 - 2.217 | 2.217 - 2.534 | 2.534 - 2.831 | 2.831 - 3.436 |

Through Lanes

| |
|-----------|
| 2 |
| 0 - 3.436 |

Street Name

| | | |
|---------------|---------------|---------------|
| BANK ST | MEDINA ST | LAFAYETTE RD |
| 1.133 - 2.217 | 2.217 - 2.883 | 2.883 - 3.436 |

- Non-divided Highway
- Divided Highway
- Secondary Segment
- Corporation
- Bridge (on route)
- Underpass
- Overpass
- Railroad (at grade)
- Railroad (underpass)
- Railroad (overpass)
- Intersection

Created on: 7/2/2025

transportation.ohio.gov

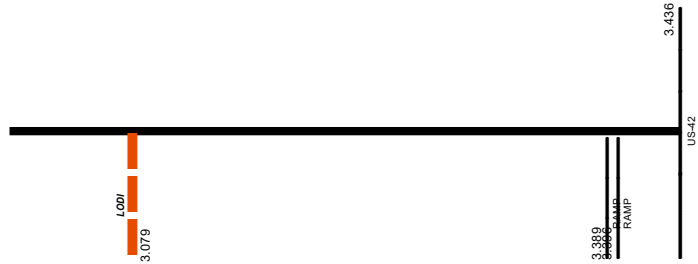
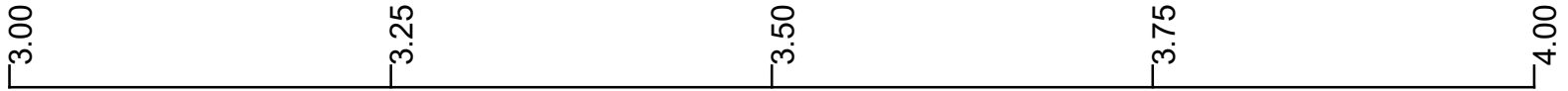
Prepared by
The Ohio Department of Transportation
Office of Technical Services
Roadway Information

SMEDSR00421**C

3.436

State True Log

County True Log



Surface Type & Width (Left / Right)

G (20'2')
2.534 - 3.436

Base Type (Left / Right)

N / L
2.534 - 3.436

Shoulder Type & Width (Left / Right)

2 (3'3')
2.831 - 3.436

Through Lanes

2
0 - 3.436

Street Name

LAFAYETTE RD
2.883 - 3.436

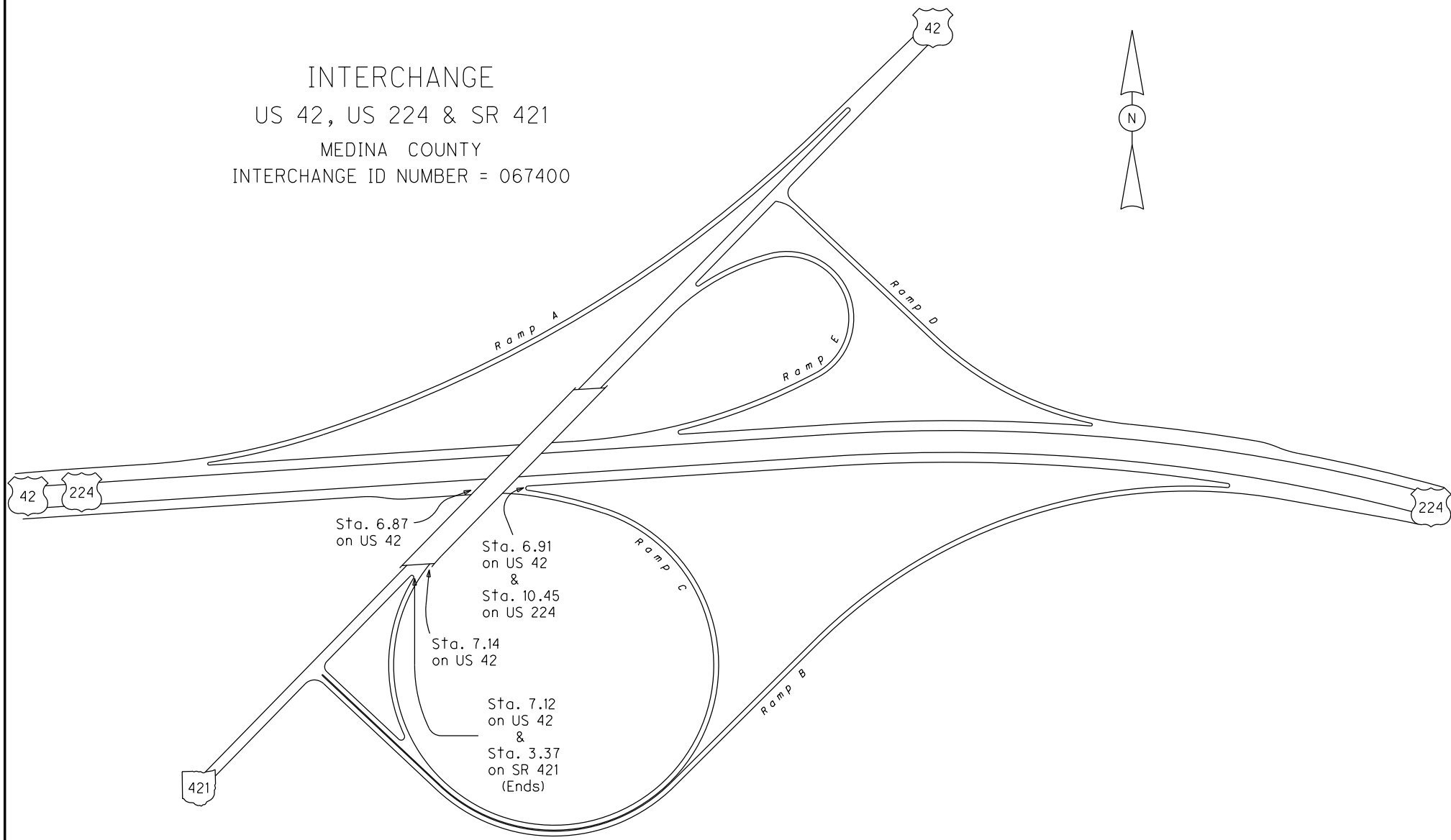
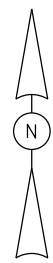
- Non-divided Highway
- Divided Highway
- Secondary Segment
- Corporation
- Bridge (on route)
- Underpass
- Overpass
- Railroad (at grade)
- Railroad (underpass)
- Railroad (overpass)
- Intersection

Created on: 7/2/2025



transportation.ohio.gov
Prepared by
The Ohio Department of Transportation
Office of Technical Services
Roadway Information

INTERCHANGE
US 42, US 224 & SR 421
MEDINA COUNTY
INTERCHANGE ID NUMBER = 067400



Historical Project List for SMEDSR00421**C

| Begin Measure | End Measure | Project ID Number | Construction Completion Date | Treatment Category | Treatment Type |
|---------------|-------------|-------------------|------------------------------|----------------------|---------------------|
| 0.091 | 3.436 | 83424 | 6-2014 | Minor Rehabilitation | 60-AC Overlay w/Rpr |

Roadway Codes

Access Control Journalized

- F - Full Access Control
- L - Limited Access Control
- N - No Access Control

Access Control Operational

- 1 - Full Access Control
- 2 - Partial Access Control
- 3 - No Access Control

Base Type

- F - Crack and Seat
- H - Rubblize and Roll
- I - Aggregate Base 304 or Traffic Compacted
- K - Water Bound Macadam
- L - Bituminous Concrete Mix or Penetration Macadam
- N - Plain Concrete
- P - Reinforced Concrete
- R - Brick (Flexible)
- T - Brick (Rigid)

Direction of Travel

- B - Both (Two-way)
- F - One-way Cardinal
- T - One-way Non-cardinal

Facility Type

- 1 - One-way Roadway
- 2 - Two-way Roadway
- 4 - Ramp
- 5 - Non-mainline
- 6 - Non-inventory Direction
- 7 - Planned / Unbuilt

Historical Federal Aid Indicator

- N - Not a FAP Route
- Y - FAP Route

Functional Classification

- 01 - Interstate
- 02 - Principal Arterial (Freeways)
- 03 - Principal Arterial (Other)
- 04 - Minor Arterial
- 05 - Major Collector
- 06 - Minor Collector
- 07 - Local

Leave / Reenter Indicator

- Y - Route leaves/reenters at this point
- N - Route does not leave/reenter at this point

Median Type

- 1 - None
- 2 - Unprotected
- 3 - Curbed
- 4 - Positive Barrier (Unspecified)
- 5 - Positive Barrier (Flexible)
- 6 - Positive Barrier (Semi-rigid)
- 7 - Positive Barrier (Rigid)

NHS

- N - National Highway System
- H - Congressional Corridor
- 2 - Major Airport
- 3 - Major Port Facility
- 4 - Major Amtrak Station
- 5 - Major Rail / Truck Terminal
- 6 - Major Intercity Bus Terminal
- 7 - Major Public Transit / Multi-modal Passenger Terminal
- 8 - Major Pipeline Terminal
- 9 - Major Ferry Terminal

Priority System

- G - General
- P - Priority System
- U - Urban

Scenic Byway Code

- A - All American Road
- N - National Scenic Byway
- S - State Scenic Byway

Shoulder Type

- 1 - None
- 2 - Surfaced shoulder exists (bituminous concrete {AC})
- 3 - Surfaced shoulder exists (Portland Cement Concrete {PCC})
- 4 - Stabilized shoulder exists (gravel or other granular material)
- 5 - Combination shoulder exists (two or more surface types)
- 6 - Earth shoulder exists
- 7 - Barrier curb exists; no shoulder in front of curb

Surface Type

- A - Combination
- B - Brick
- C - Continuous Reinforced Concrete
- D - Reinforced Concrete
- E - Plain Concrete
- G - Bituminous Concrete
- I - Chipseal on Granular
- K - Open Graded Bituminous
- L - Chipseal or Micro
- M - Gravel
- U - Unimproved
- X - Right of Way Only