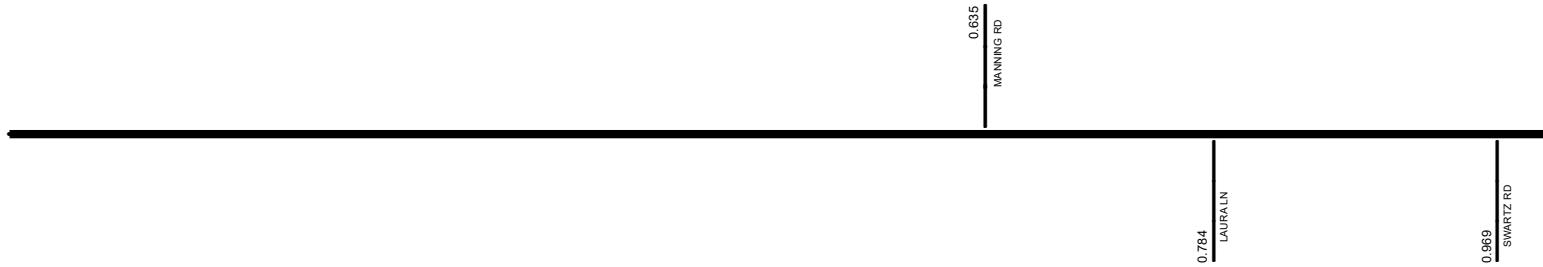
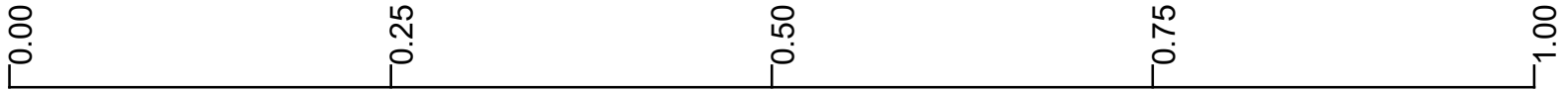


SPORSR00043**C

State True Log 75.504

76.504

County True Log



Surface Type & Width (Left / Right)	G (20'2') 0 - 2.671
Base Type (Left / Right)	I / L 0 - 2.671
Shoulder Type & Width (Left / Right)	5 (1/2') 0 - 2.671
Through Lanes	2 0 - 7.601
Street Name	SR 43 0 - 9.888

<ul style="list-style-type: none"> Non-divided Highway Divided Highway Secondary Segment Corporation 	<ul style="list-style-type: none"> Bridge (on route) Underpass Overpass 	<ul style="list-style-type: none"> Railroad (at grade) Railroad (underpass) Railroad (overpass) 	<ul style="list-style-type: none"> Intersection
--	---	---	---

Created on: 7/8/2025

transportation.ohio.gov

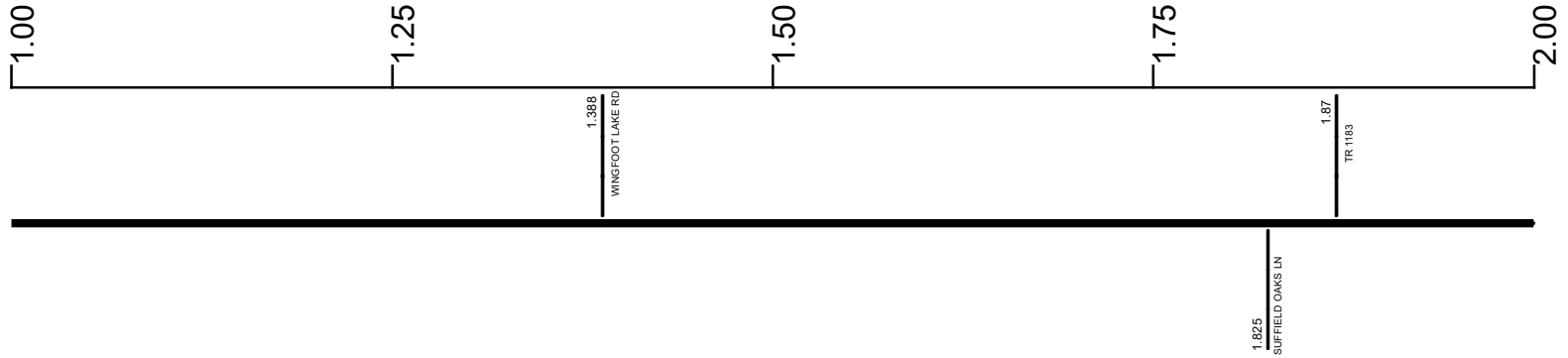
Prepared by
The Ohio Department of Transportation
Office of Technical Services
Roadway Information

SPORSR00043**C

State True Log

77.504

County True Log



Surface Type & Width (Left / Right)

	G (20'/2')
	0 - 2.671

Base Type (Left / Right)

	I / L
	0 - 2.671

Shoulder Type & Width (Left / Right)

	5 (1'/2')
	0 - 2.671

Through Lanes

	2
	0 - 7.601

Street Name

	SR 43
	0 - 9.888

- | | | | |
|---------------------|-------------------|----------------------|--------------|
| Non-divided Highway | Bridge (on route) | Railroad (at grade) | Intersection |
| Divided Highway | Underpass | Railroad (underpass) | |
| Secondary Segment | Overpass | Railroad (overpass) | |
| Corporation | | | |

Created on: 7/8/2025

transportation.ohio.gov

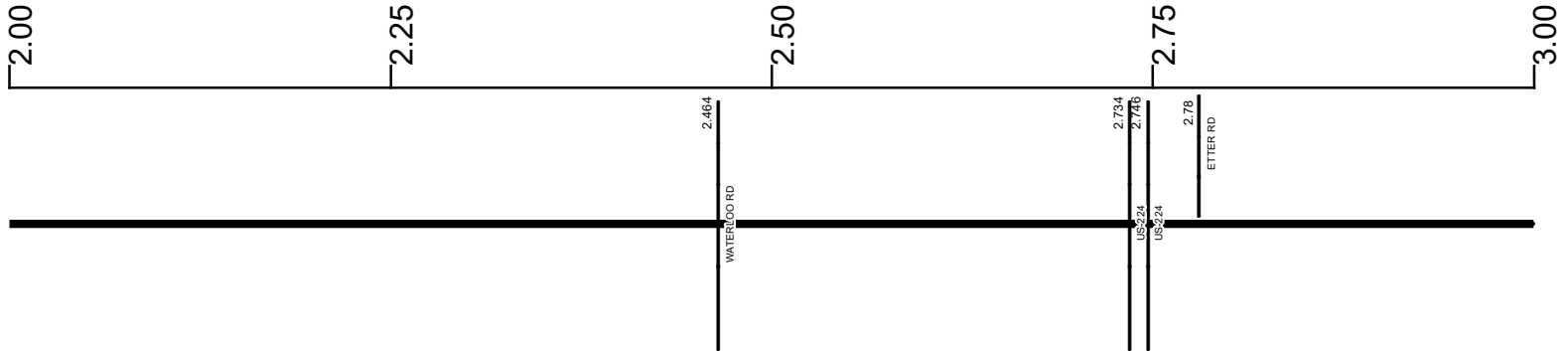
Prepared by
The Ohio Department of Transportation
Office of Technical Services
Roadway Information

SPORSR00043**C

State True Log

78.504

County True Log



Surface Type & Width (Left / Right)

	G (20'1/2')	G 36'	G 24'
	0 - 2.671	2.671 - 2.839	2.839 - 7.601

Base Type (Left / Right)

	I / L	L	I
	0 - 2.671	2.671 - 2.839	2.839 - 7.601

Shoulder Type & Width (Left / Right)

	5 (1'1/2')	1 (0'0')	5 (2'1/2')
	0 - 2.671	2.671 - 2.839	2.839 - 7.601

Through Lanes

	2	
	0 - 7.601	

Street Name

	SR 43	
	0 - 9.888	

- Non-divided Highway
- Divided Highway
- Secondary Segment
- Corporation
- Bridge (on route)
- Underpass
- Overpass
- Railroad (at grade)
- Railroad (underpass)
- Railroad (overpass)
- Intersection

Created on: 7/8/2025

transportation.ohio.gov

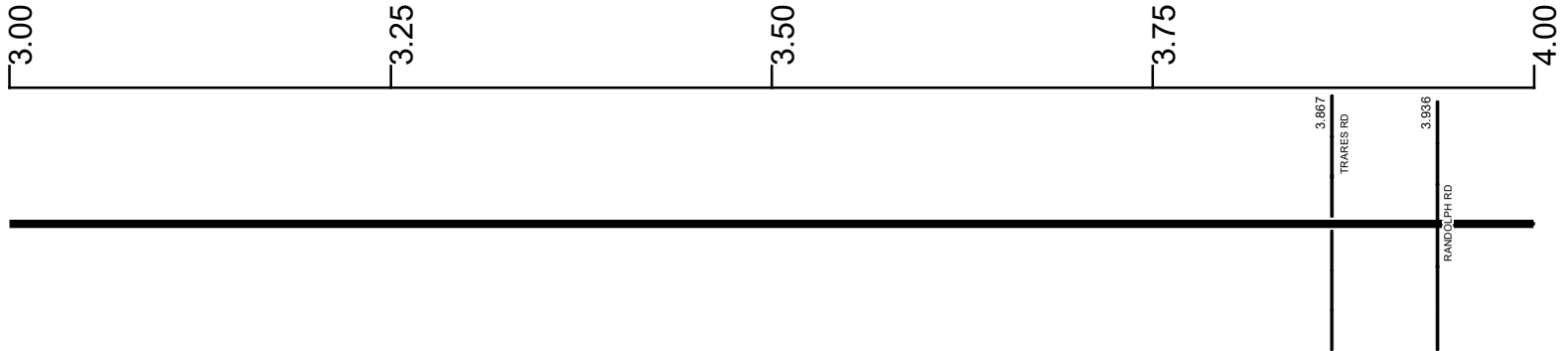
Prepared by
The Ohio Department of Transportation
Office of Technical Services
Roadway Information

SPORSR00043**C

State True Log

79.504

County True Log



Surface Type & Width (Left / Right)

	G 24'
	2.839 - 7.601

Base Type (Left / Right)

	I
	2.839 - 7.601

Shoulder Type & Width (Left / Right)

	5 (2/2')
	2.839 - 7.601

Through Lanes

	2
	0 - 7.601

Street Name

	SR 43
	0 - 9.888

- | | | | |
|---------------------|-------------------|----------------------|--------------|
| Non-divided Highway | Bridge (on route) | Railroad (at grade) | Intersection |
| Divided Highway | Underpass | Railroad (underpass) | |
| Secondary Segment | Overpass | Railroad (overpass) | |
| Corporation | | | |

Created on: 7/8/2025

transportation.ohio.gov

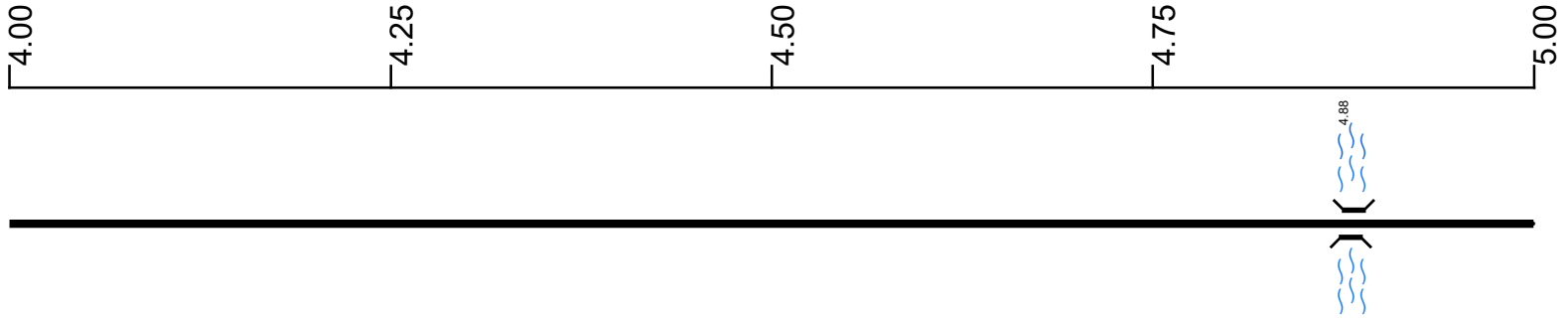
Prepared by
The Ohio Department of Transportation
Office of Technical Services
Roadway Information

SPORSR00043**C

State True Log

80.504

County True Log



Surface Type & Width (Left / Right)

	G 24'
	2.839 - 7.601

Base Type (Left / Right)

	I
	2.839 - 7.601

Shoulder Type & Width (Left / Right)

	5 (2/2')
	2.839 - 7.601

Through Lanes

	2
	0 - 7.601

Street Name

	SR 43
	0 - 9.888

- | | | | |
|---------------------|-------------------|----------------------|--------------|
| Non-divided Highway | Bridge (on route) | Railroad (at grade) | Intersection |
| Divided Highway | Underpass | Railroad (underpass) | |
| Secondary Segment | Overpass | Railroad (overpass) | |
| Corporation | | | |

Created on: 7/8/2025

transportation.ohio.gov

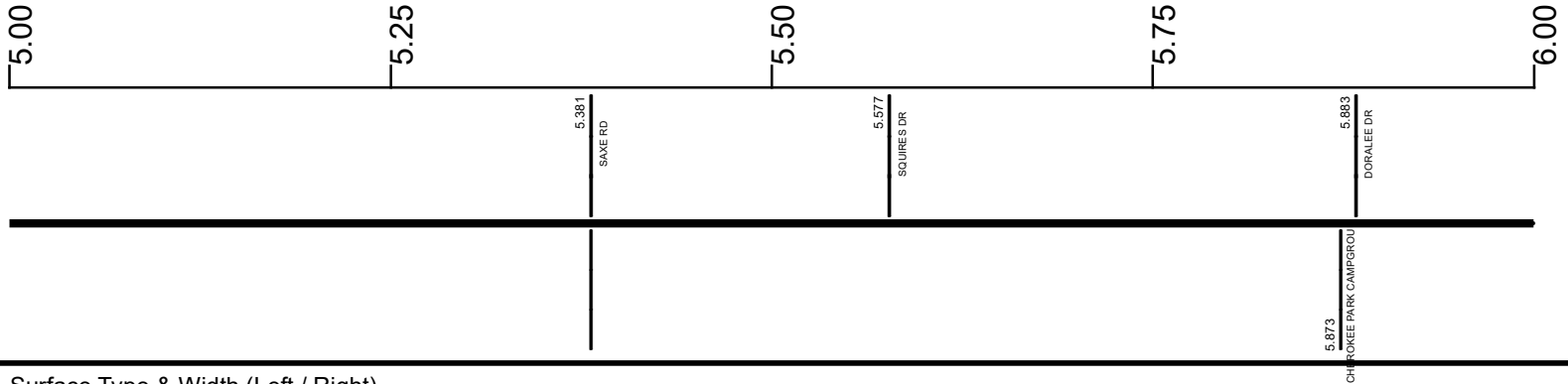
Prepared by
The Ohio Department of Transportation
Office of Technical Services
Roadway Information

SPORSR00043**C

State True Log

81.504

County True Log



Surface Type & Width (Left / Right)

	G 24'
	2.839 - 7.601

Base Type (Left / Right)

	I
	2.839 - 7.601

Shoulder Type & Width (Left / Right)

	5 (2 1/2')
	2.839 - 7.601

Through Lanes

	2
	0 - 7.601

Street Name

	SR 43
	0 - 9.888

- | | | | |
|---------------------|-------------------|----------------------|--------------|
| Non-divided Highway | Bridge (on route) | Railroad (at grade) | Intersection |
| Divided Highway | Underpass | Railroad (underpass) | |
| Secondary Segment | Overpass | Railroad (overpass) | |
| Corporation | | | |

Created on: 7/8/2025

transportation.ohio.gov

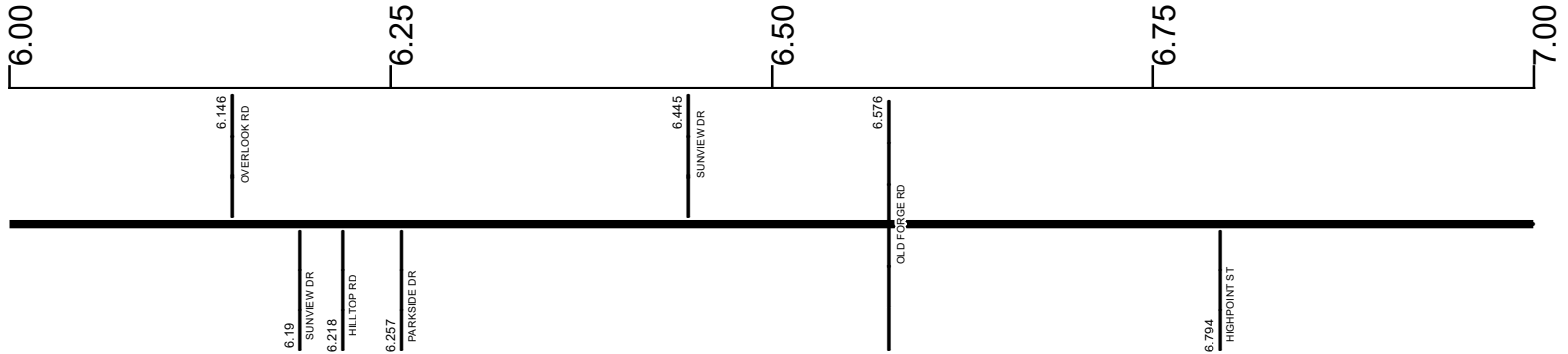
Prepared by
The Ohio Department of Transportation
Office of Technical Services
Roadway Information

SPORSR00043**C

State True Log

82.504

County True Log



Surface Type & Width (Left / Right)

G 24'
2.839 - 7.601

Base Type (Left / Right)

I
2.839 - 7.601

Shoulder Type & Width (Left / Right)

5 (2/2)
2.839 - 7.601

Through Lanes

2
0 - 7.601

Street Name

SR 43
0 - 9.888

- Non-divided Highway
- Divided Highway
- Secondary Segment
- Corporation
- Bridge (on route)
- Underpass
- Overpass
- Railroad (at grade)
- Railroad (underpass)
- Railroad (overpass)
- Intersection

Created on: 7/8/2025

transportation.ohio.gov

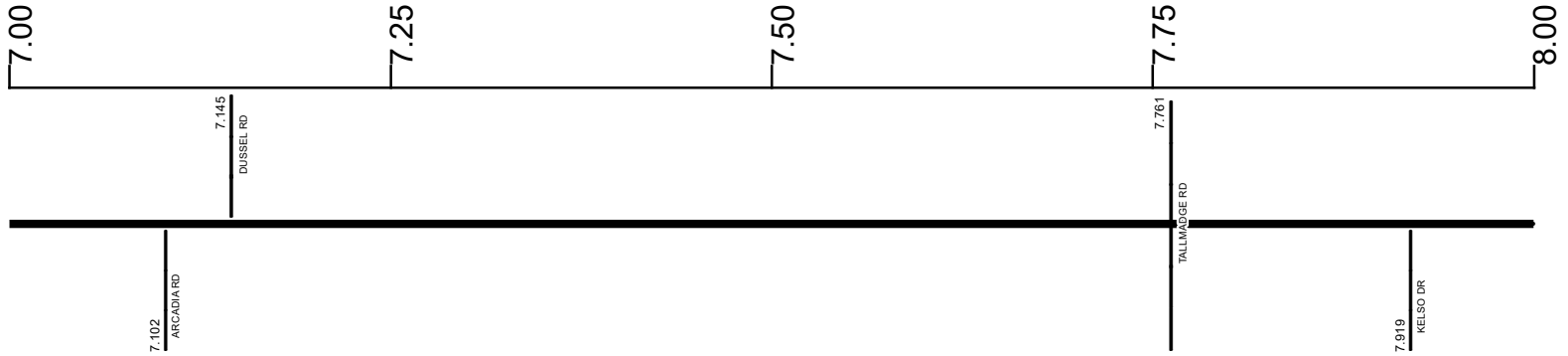
Prepared by
The Ohio Department of Transportation
Office of Technical Services
Roadway Information

SPORSR00043**C

State True Log

83.504

County True Log



Surface Type & Width (Left / Right)

G 24'	G (36'/24')
2.839 - 7.601	7.601 - 8.135

Base Type (Left / Right)

I	L / I	L / K
2.839 - 7.601	7.601 - 7.761	7.761 - 8.135

Shoulder Type & Width (Left / Right)

5 (2'1/2')	2 (3'1/4')
2.839 - 7.601	7.601 - 9.888

Through Lanes

2	4
0 - 7.601	7.601 - 11.655

Street Name

	SR 43
	0 - 9.888

- | | | | |
|---------------------|-------------------|----------------------|--------------|
| Non-divided Highway | Bridge (on route) | Railroad (at grade) | Intersection |
| Divided Highway | Underpass | Railroad (underpass) | |
| Secondary Segment | Overpass | Railroad (overpass) | |
| Corporation | | | |

Created on: 7/8/2025

transportation.ohio.gov

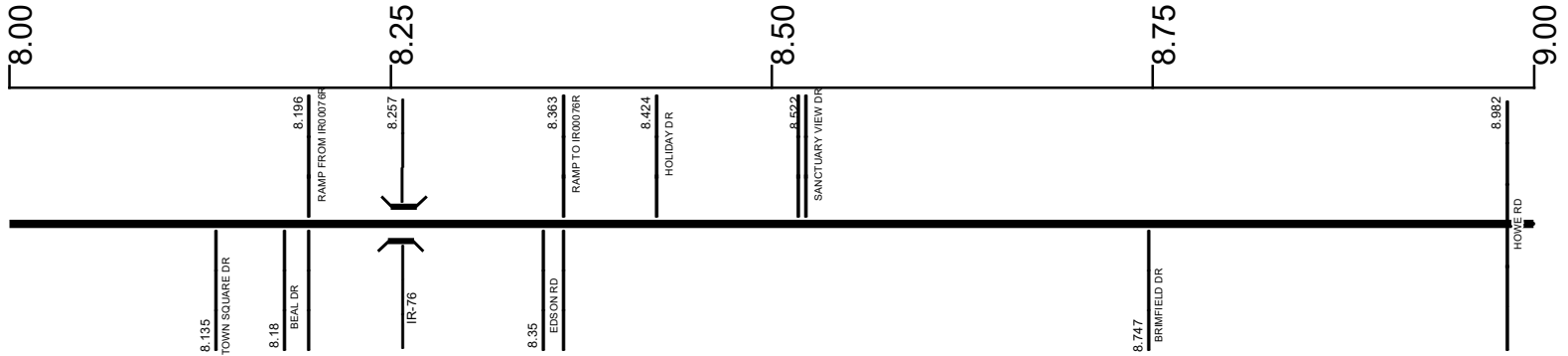
Prepared by
The Ohio Department of Transportation
Office of Technical Services
Roadway Information

SPORSR00043**C

State True Log

84.504

County True Log



Surface Type & Width (Left / Right)

G (36'/24')	G 60'	G (36'/24')
7.601 - 8.135	8.135 - 8.504	8.504 - 9.954

Base Type (Left / Right)

L / K	L	L / K
7.761 - 8.135	8.135 - 8.504	8.504 - 9.954

Shoulder Type & Width (Left / Right)

2 (3/4')
7.601 - 9.888

Through Lanes

4
7.601 - 11.655

Street Name

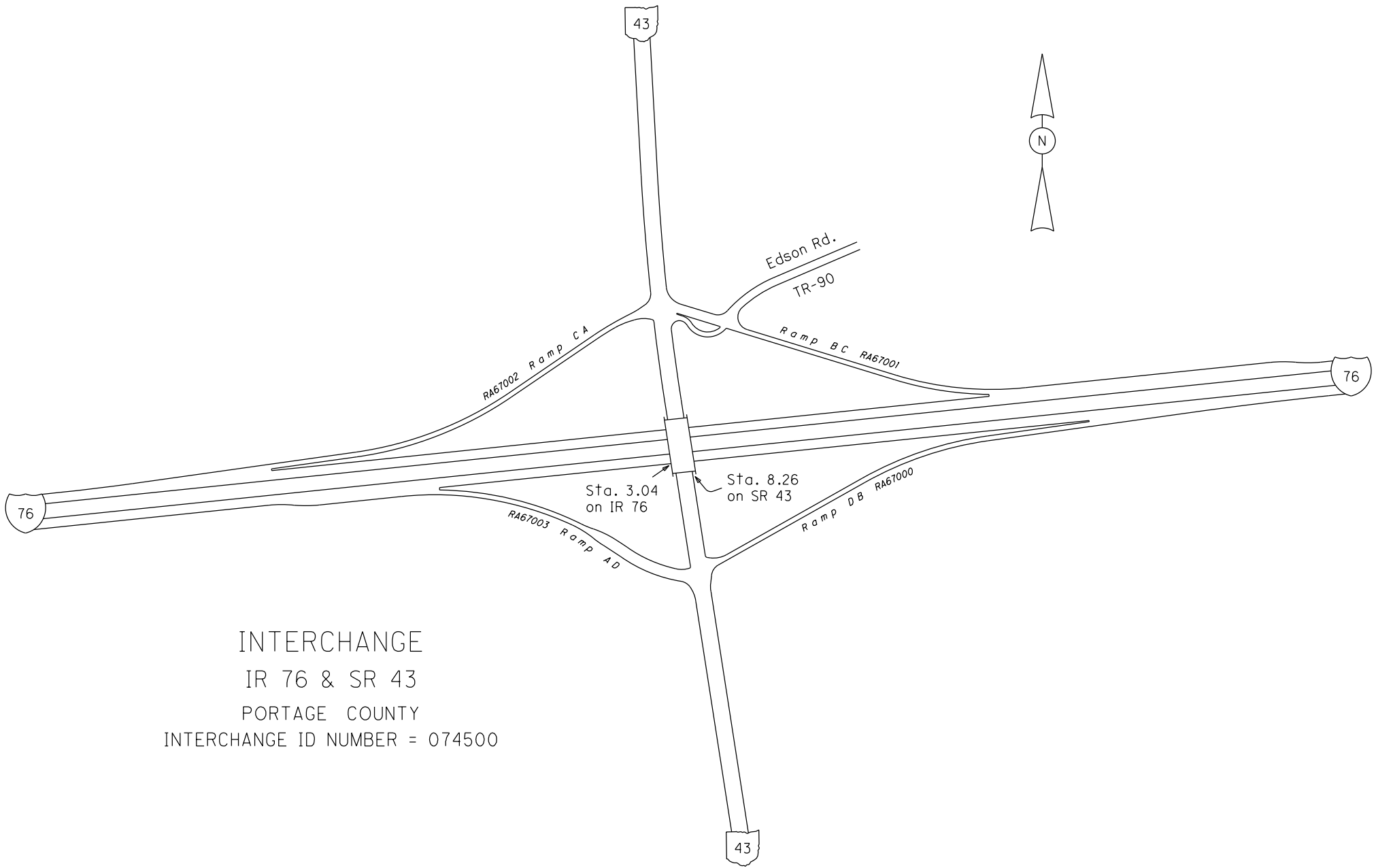
SR 43
0 - 9.888

- Non-divided Highway
 Bridge (on route)
 Railroad (at grade)
 Intersection
- Divided Highway
 Underpass
 Railroad (underpass)
- Secondary Segment
 Overpass
 Railroad (overpass)
- Corporation**

Created on: 7/8/2025

transportation.ohio.gov

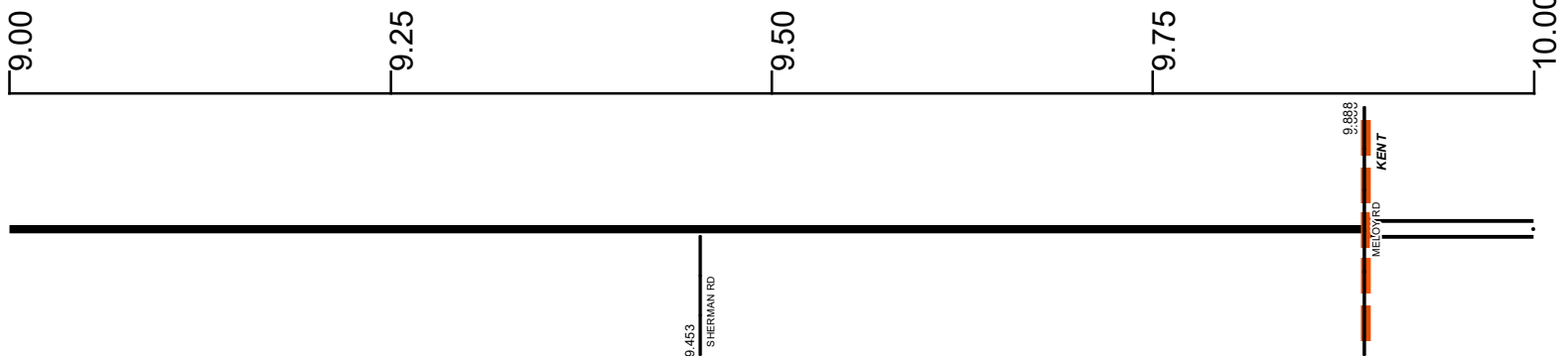
Prepared by
The Ohio Department of Transportation
Office of Technical Services
Roadway Information



INTERCHANGE
IR 76 & SR 43
PORTAGE COUNTY
INTERCHANGE ID NUMBER = 074500

SPORSR00043**C

State True Log 85.504
 County True Log 10.00



Surface Type & Width (Left / Right)

G (36'/24')		G 48'
8.504 - 9.954		9.954 - 10.083

Base Type (Left / Right)

L / K		L
8.504 - 9.954		9.954 - 10.083

Shoulder Type & Width (Left / Right)

2 (3/4')		2 (4/4')	2 (3/3')
7.601 - 9.888		9.888 - 9.954	9.954 - 10.083

Median Type and Width

2 (10')
9.888 - 10.083

Through Lanes

4
7.601 - 11.655

Street Name

SR 43		S WATER ST
0 - 9.888		9.888 - 11.428

- | | | | |
|---------------------|-------------------|----------------------|--------------|
| Non-divided Highway | Bridge (on route) | Railroad (at grade) | Intersection |
| Divided Highway | Underpass | Railroad (underpass) | |
| Secondary Segment | Overpass | Railroad (overpass) | |
| Corporation | | | |

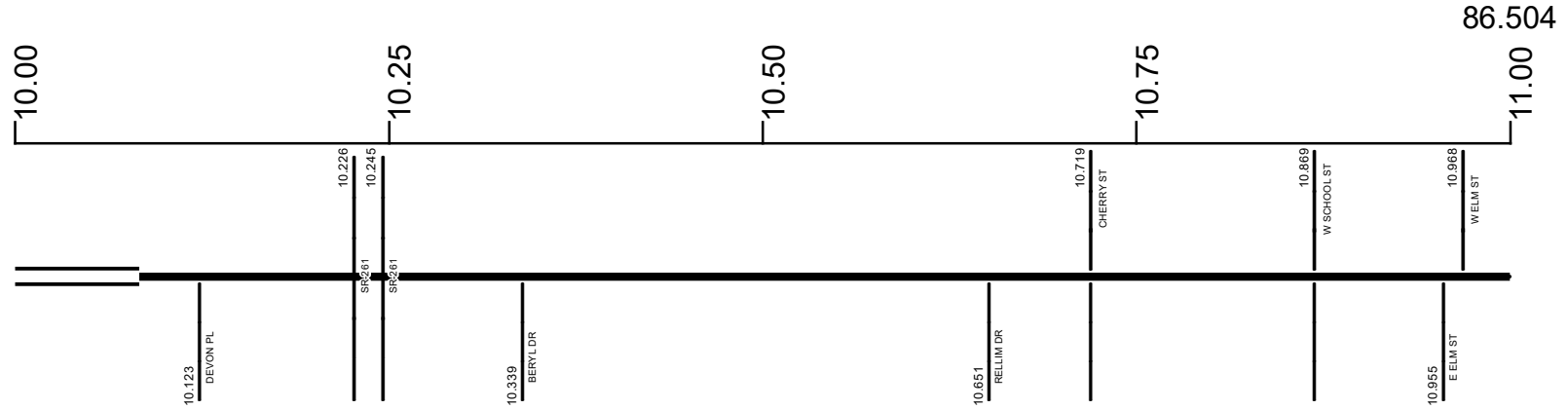
Created on: 7/8/2025

transportation.ohio.gov

Prepared by
 The Ohio Department of Transportation
 Office of Technical Services
 Roadway Information

SPORSR00043**C

State True Log
County True Log



Surface Type & Width (Left / Right)

G 48'	G (24'/36')	G (20'/24')	G (24'/20')
9.954 - 10.083	10.083 - 10.296	10.296 - 10.639	10.639 - 11.351

Base Type (Left / Right)

L	R / L	T / L	
9.954 - 10.083	10.083 - 10.639	10.639 - 11.351	

Shoulder Type & Width (Left / Right)

2 (3'/3')		1 (0'/0')	
9.954 - 10.083		10.083 - 13.206	

Median Type and Width

2 (10')			
9.888 - 10.083			

Through Lanes

		4	
		7.601 - 11.655	

Street Name

		S WATER ST	
		9.888 - 11.428	

- Non-divided Highway
- Divided Highway
- Secondary Segment
- Corporation
- Bridge (on route)
- Underpass
- Overpass
- Railroad (at grade)
- Railroad (underpass)
- Railroad (overpass)
- Intersection

Created on: 7/8/2025

transportation.ohio.gov

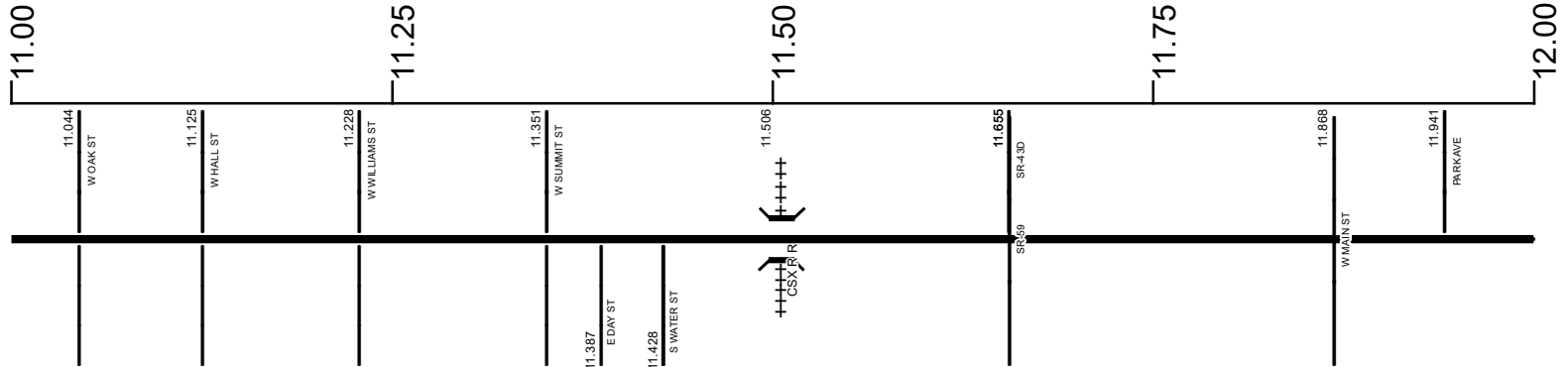
Prepared by
The Ohio Department of Transportation
Office of Technical Services
Roadway Information

SPORSR00043**C

State True Log

87.504

County True Log



Surface Type & Width (Left / Right)

G (24'/20')	G 64'	G 28'	D 36'
10.639 - 11.351	11.351 - 11.655	11.655 - 11.868	11.868 - 12.145

Base Type (Left / Right)

T / L	L
10.639 - 11.351	11.351 - 11.868

Shoulder Type & Width (Left / Right)

1 (0'/0')
10.083 - 13.206

Resurface Year

2023
11.868 - 13.198

Through Lanes

4	2
7.601 - 11.655	11.655 - 12.194

Street Name

S WATER ST	HAYMAKER PKWY	RIVER ST	GOUGLER AVE
9.888 - 11.428	11.428 - 11.655	11.655 - 11.868	11.868 - 12.194

- Non-divided Highway
- Divided Highway
- Secondary Segment
- Corporation
- Bridge (on route)
- Underpass
- Overpass
- Railroad (at grade)
- Railroad (underpass)
- Railroad (overpass)
- Intersection

Created on: 7/8/2025

transportation.ohio.gov

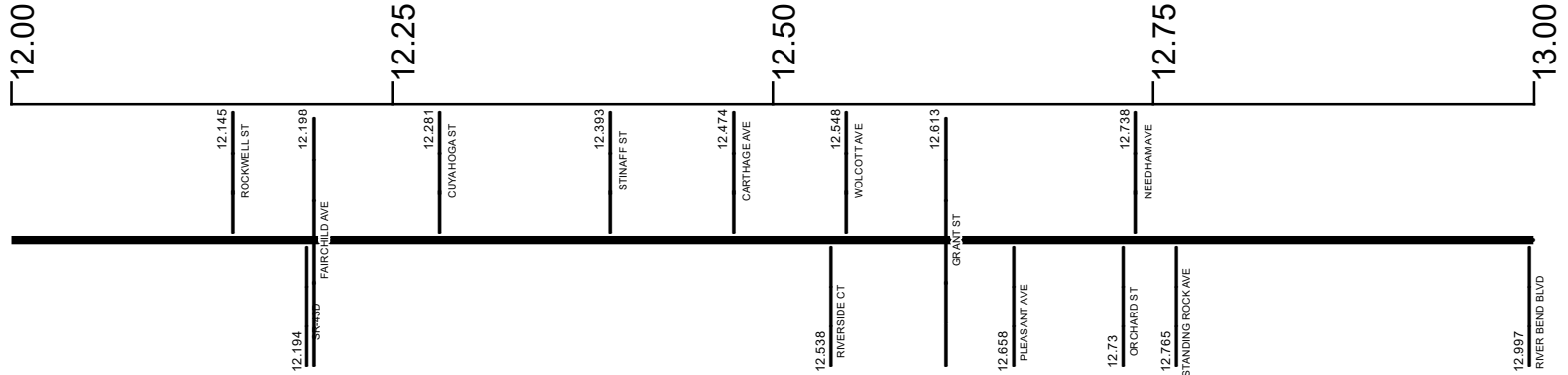
Prepared by
The Ohio Department of Transportation
Office of Technical Services
Roadway Information

SPORSR00043**C

State True Log

88.504

County True Log



Surface Type & Width (Left / Right)

D 36'	E 36'	E 48'	G (24'/20')	G (16'/30')
11.868 - 12.145	12.194 - 12.281		12.281 - 12.971	12.971 - 13.206

Base Type (Left / Right)

T / N	P / N
12.281 - 12.971	12.971 - 13.206

Shoulder Type & Width (Left / Right)

1 (0'/0')
10.083 - 13.206

Resurface Year

2023

11.868 - 13.198

Through Lanes

2	4
---	---

11.655 - 12.194

12.194 - 13.206

Street Name

GOUGLER AVE	N MANTUA ST
-------------	-------------

11.868 - 12.194

12.194 - 13.206

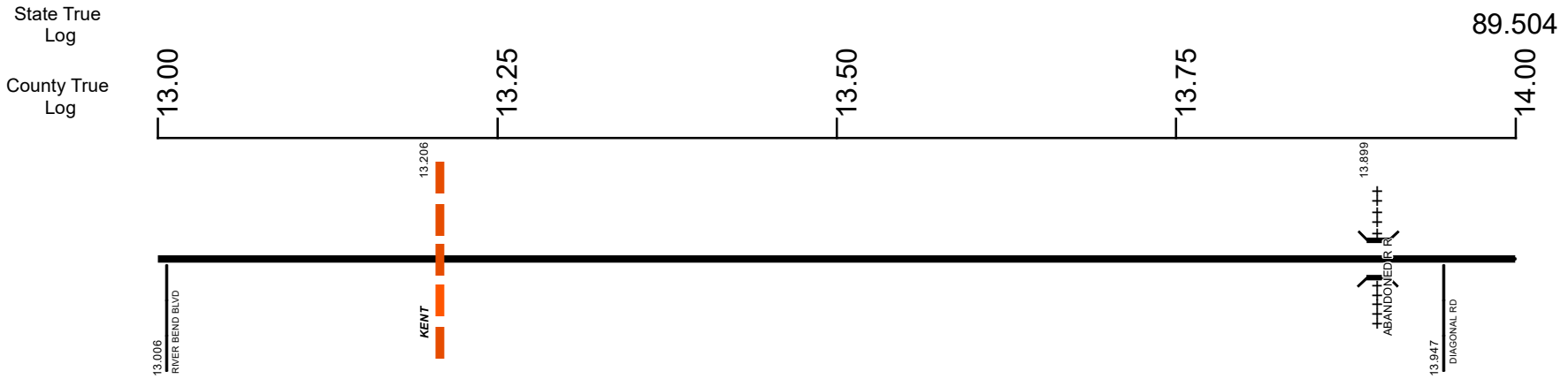
<ul style="list-style-type: none"> Non-divided Highway Divided Highway Secondary Segment Corporation 	<ul style="list-style-type: none"> Bridge (on route) Underpass Overpass 	<ul style="list-style-type: none"> Railroad (at grade) Railroad (underpass) Railroad (overpass) 	<ul style="list-style-type: none"> Intersection
--	---	---	---

Created on: 7/8/2025

transportation.ohio.gov

Prepared by
The Ohio Department of Transportation
Office of Technical Services
Roadway Information

SPORSR00043**C



Surface Type & Width (Left / Right)

G (16'/30')	G (16'/8')
12.971 - 13.206	13.206 - 14.247

Base Type (Left / Right)

P / N	P / I
12.971 - 13.206	13.206 - 14.247

Shoulder Type & Width (Left / Right)

1 (0'/0')	5 (2'/2')
10.083 - 13.206	13.206 - 14.247

Resurface Year

2023
11.868 - 13.198

Through Lanes

4	2
12.194 - 13.206	13.206 - 17.912

Street Name

N MANTUA ST	SR 43
12.194 - 13.206	13.206 - 20.707

- Non-divided Highway
- Divided Highway
- Secondary Segment
- Corporation
- Bridge (on route)
- Underpass
- Overpass
- Railroad (at grade)
- Railroad (underpass)
- Railroad (overpass)
- Intersection

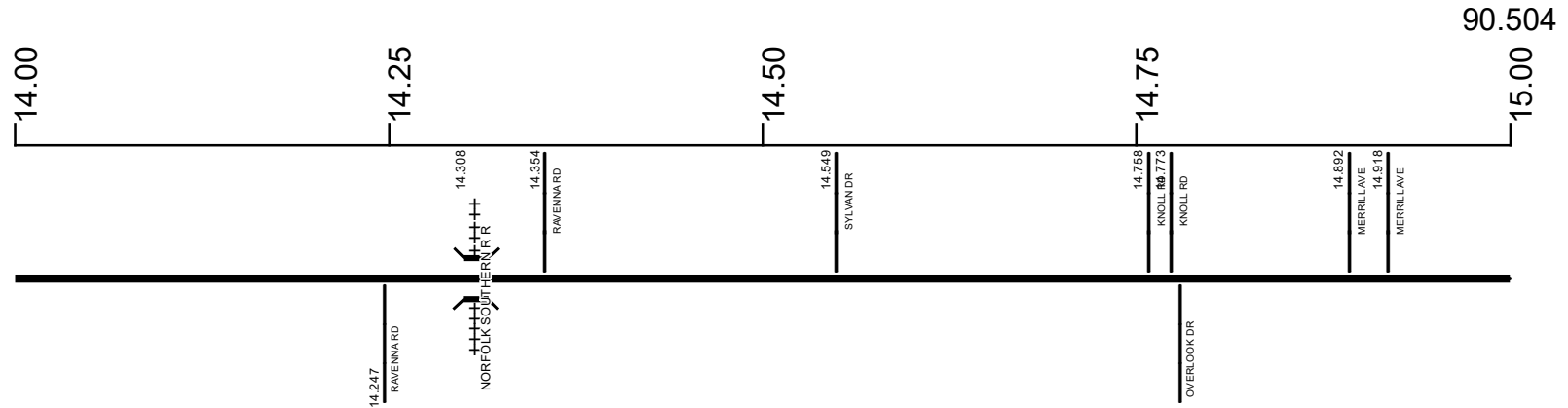
Created on: 7/8/2025

transportation.ohio.gov

Prepared by
The Ohio Department of Transportation
Office of Technical Services
Roadway Information

SPORSR00043**C

State True Log
County True Log



Surface Type & Width (Left / Right)

G (16'8")	G 24'	G (16'8")
13.206 - 14.247	14.247 - 14.487	14.487 - 17.465

Base Type (Left / Right)

P / I	I	P / I
13.206 - 14.247	14.247 - 14.487	14.487 - 17.465

Shoulder Type & Width (Left / Right)

5 (2'2")	5 (6'6")	5 (2'2")
13.206 - 14.247	14.247 - 14.487	14.487 - 17.912

Through Lanes

2
13.206 - 17.912

Street Name

SR 43
13.206 - 20.707

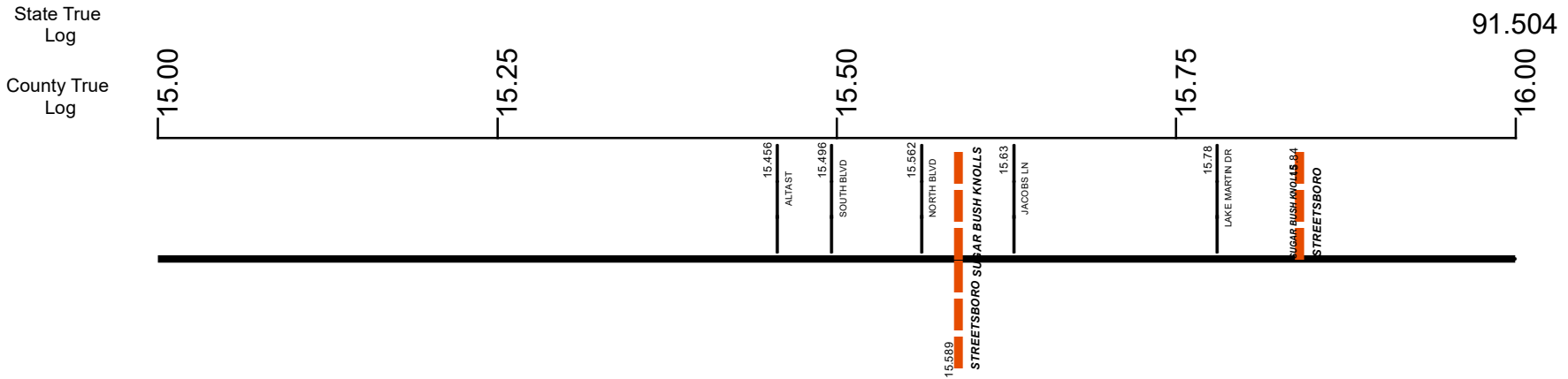
- Non-divided Highway
- Divided Highway
- Secondary Segment
- Corporation
- Bridge (on route)
- Underpass
- Overpass
- Railroad (at grade)
- Railroad (underpass)
- Railroad (overpass)
- Intersection

Created on: 7/8/2025

transportation.ohio.gov

Prepared by
The Ohio Department of Transportation
Office of Technical Services
Roadway Information

SPORSR00043**C



Surface Type & Width (Left / Right)	G (16/8')
	14.487 - 17.465
Base Type (Left / Right)	P / I
	14.487 - 17.465
Shoulder Type & Width (Left / Right)	5 (2/2')
	14.487 - 17.912
Through Lanes	2
	13.206 - 17.912
Street Name	SR 43
	13.206 - 20.707

	Non-divided Highway		Bridge (on route)		Railroad (at grade)		Intersection
	Divided Highway		Underpass		Railroad (underpass)		
	Secondary Segment		Overpass		Railroad (overpass)		
	Corporation						

Created on: 7/8/2025

transportation.ohio.gov

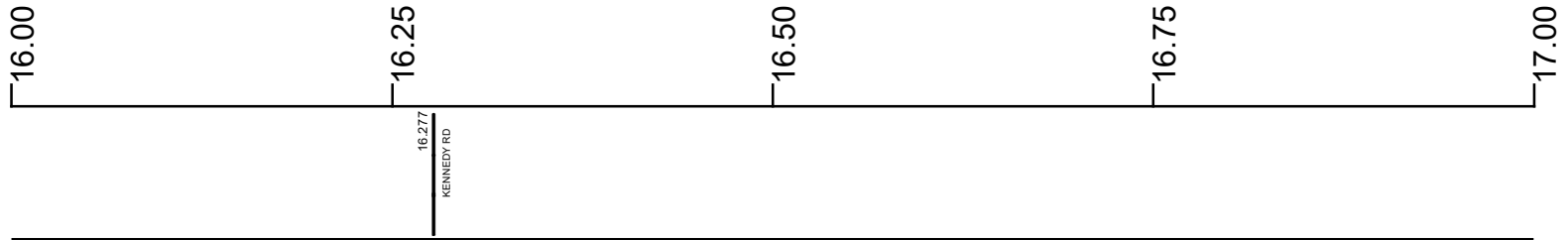
Prepared by
The Ohio Department of Transportation
Office of Technical Services
Roadway Information

SPORSR00043**C

State True Log

92.504

County True Log



Surface Type & Width (Left / Right)

G (16'/8')
14.487 - 17.465

Base Type (Left / Right)

P / I
14.487 - 17.465

Shoulder Type & Width (Left / Right)

5 (2'/2')
14.487 - 17.912

Through Lanes

2
13.206 - 17.912

Street Name

SR 43
13.206 - 20.707

- | | | | |
|---------------------|-------------------|----------------------|--------------|
| Non-divided Highway | Bridge (on route) | Railroad (at grade) | Intersection |
| Divided Highway | Underpass | Railroad (underpass) | |
| Secondary Segment | Overpass | Railroad (overpass) | |
| Corporation | | | |

Created on: 7/8/2025



transportation.ohio.gov

Prepared by
The Ohio Department of Transportation
Office of Technical Services
Roadway Information

SPORSR00043**C

State True
Log

93.504

County True
Log



Surface Type & Width (Left / Right)

G (16'8")	G (20'4")	G (16'8")	G 60'
14.487 - 17.465	17.465 - 17.762	17.762 - 17.912	17.912 - 18.741

Base Type (Left / Right)

P / I	P / L	P / I	L
14.487 - 17.465	17.465 - 17.762	17.762 - 17.912	17.912 - 19.241

Shoulder Type & Width (Left / Right)

5 (2'1/2')	1 (0'0")
14.487 - 17.912	17.912 - 18.862

Through Lanes

2	4
13.206 - 17.912	17.912 - 18.862

Street Name

SR 43
13.206 - 20.707

- Non-divided Highway
- Divided Highway
- Secondary Segment
- Corporation
- Bridge (on route)
- Underpass
- Overpass
- Railroad (at grade)
- Railroad (underpass)
- Railroad (overpass)
- Intersection

Created on: 7/8/2025

transportation.ohio.gov

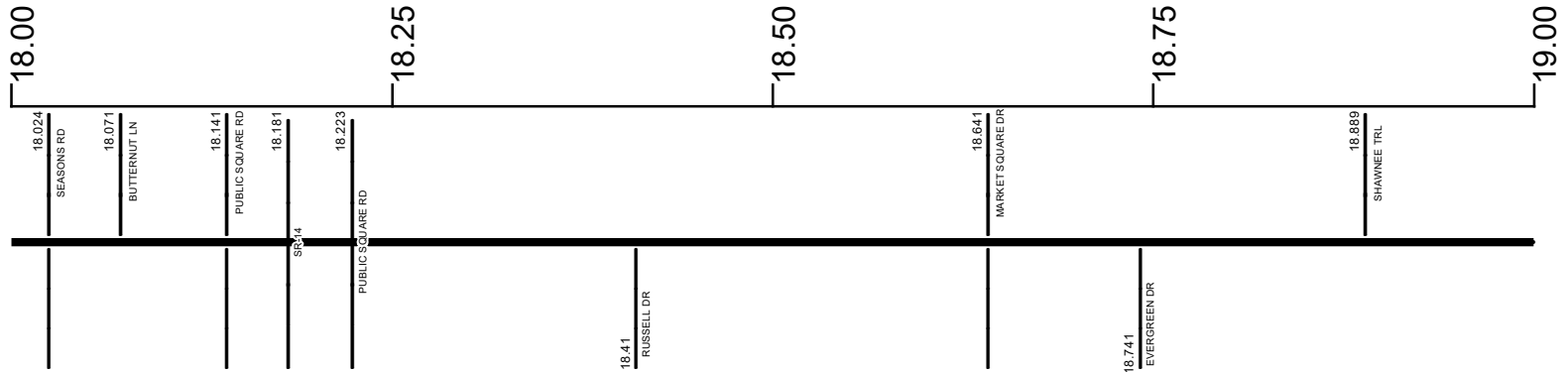
Prepared by
The Ohio Department of Transportation
Office of Technical Services
Roadway Information

SPORSR00043**C

State True Log

94.504

County True Log



Surface Type & Width (Left / Right)

G 60'	G (48'/24')	G (16'/18')
17.912 - 18.741	18.741 - 18.862	18.862 - 19.241

Base Type (Left / Right)

L
17.912 - 19.241

Shoulder Type & Width (Left / Right)

1 (0'/0')	5 (4'/4')
17.912 - 18.862	18.862 - 19.695

Resurface Year

2024
18.741 - 19.695

Through Lanes

4	2
17.912 - 18.862	18.862 - 23.662

Street Name

SR 43
13.206 - 20.707

- Non-divided Highway
- Divided Highway
- Secondary Segment
- Corporation
- Bridge (on route)
- Underpass
- Overpass
- Railroad (at grade)
- Railroad (underpass)
- Railroad (overpass)
- Intersection

Created on: 7/8/2025

transportation.ohio.gov

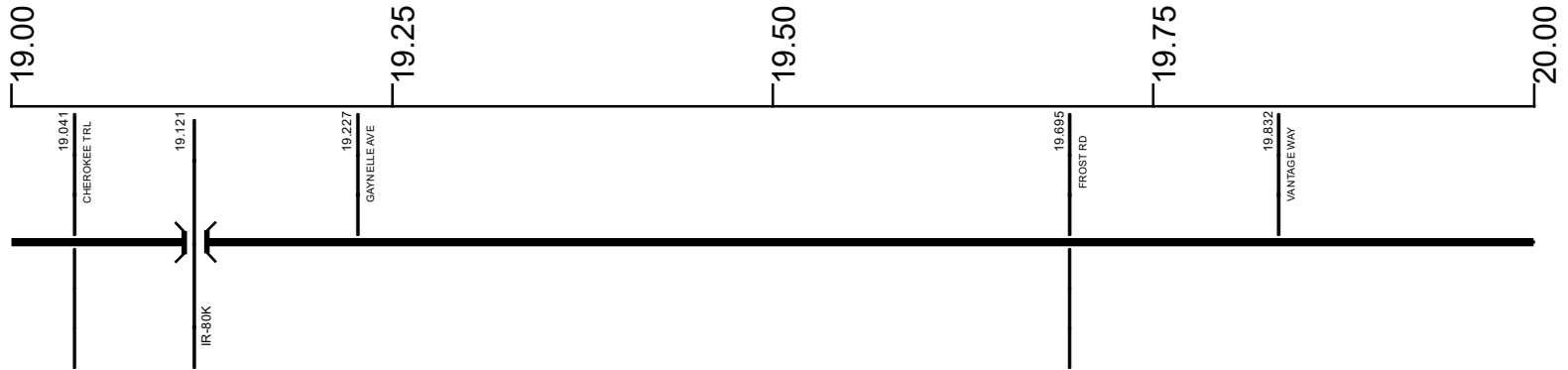
Prepared by
The Ohio Department of Transportation
Office of Technical Services
Roadway Information

SPORSR00043**C

State True Log

95.504

County True Log



Surface Type & Width (Left / Right)

G (16'/18")	G (18'/20")	G (18'/28")	G 24'	G (14'/10")
18.862 - 19.241	19.241 - 19.517	19.517 - 19.695	19.695 - 19.814	19.814 - 22.593

Base Type (Left / Right)

L	P / L	I	P / L
17.912 - 19.241	19.241 - 19.517	19.517 - 19.814	19.814 - 22.593

Shoulder Type & Width (Left / Right)

5 (4'/4')	5 (3'/3')
18.862 - 19.695	19.695 - 23.662

Resurface Year

2024
18.741 - 19.695

Through Lanes

2
18.862 - 23.662

Street Name

SR 43
13.206 - 20.707

<p> Non-divided Highway</p> <p> Divided Highway</p> <p> Secondary Segment</p> <p> Corporation</p>	<p> Bridge (on route)</p> <p> Underpass</p> <p> Overpass</p>	<p> Railroad (at grade)</p> <p> Railroad (underpass)</p> <p> Railroad (overpass)</p>	<p> Intersection</p>
---	--	--	----------------------

Created on: 7/8/2025

transportation.ohio.gov

Prepared by

The Ohio Department of Transportation

Office of Technical Services

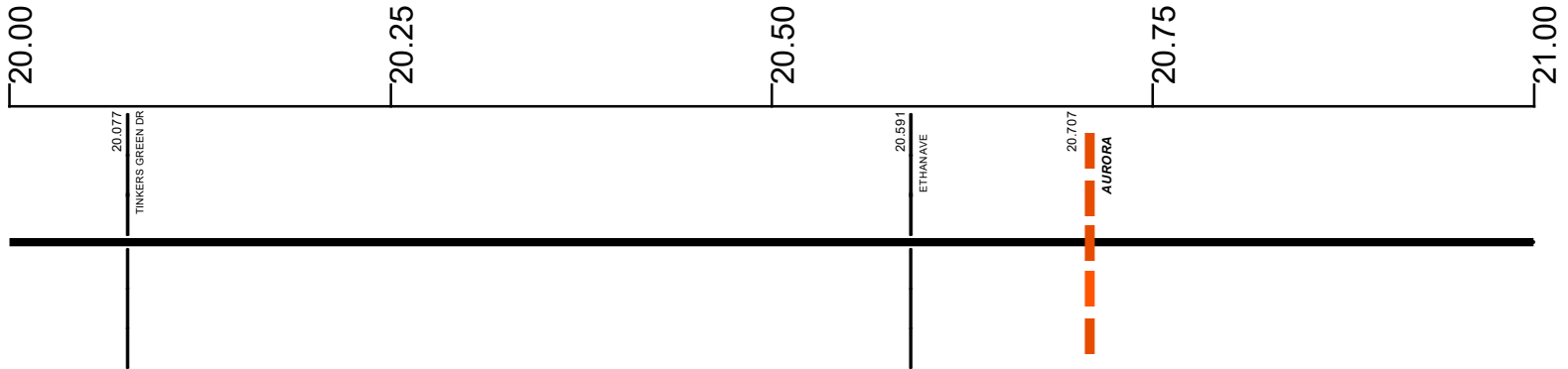
Roadway Information

SPORSR00043**C

State True Log

96.504

County True Log



Surface Type & Width (Left / Right)

G (14'/10')
19.814 - 22.593

Base Type (Left / Right)

P / L
19.814 - 22.593

Shoulder Type & Width (Left / Right)

5 (3'/3')
19.695 - 23.662

Through Lanes

2
18.862 - 23.662

Street Name

SR 43 13.206 - 20.707	CHILLICOTHE SOUTH RD 20.707 - 23.302
--------------------------	---

- | | | | |
|---------------------|-------------------|----------------------|--------------|
| Non-divided Highway | Bridge (on route) | Railroad (at grade) | Intersection |
| Divided Highway | Underpass | Railroad (underpass) | |
| Secondary Segment | Overpass | Railroad (overpass) | |
| Corporation | | | |

Created on: 7/8/2025

transportation.ohio.gov

Prepared by
The Ohio Department of Transportation
Office of Technical Services
Roadway Information

SPORSR00043**C

State True Log

97.504

County True Log

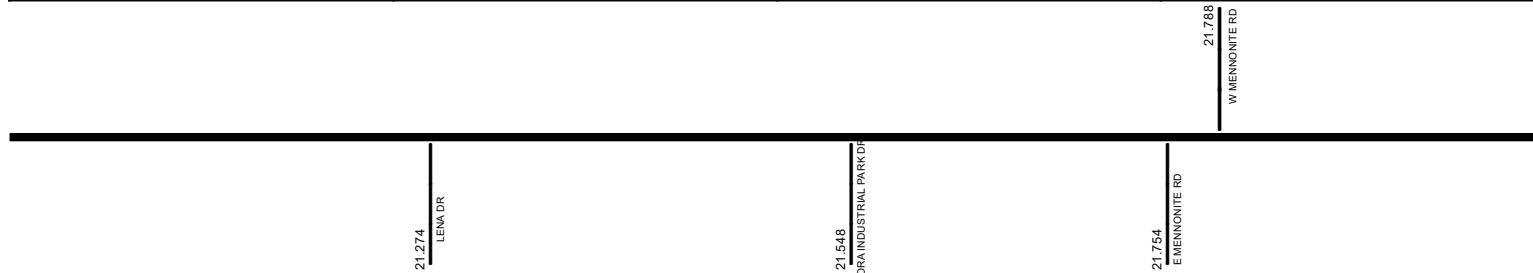
21.00

21.25

21.50

21.75

22.00



Surface Type & Width (Left / Right)

G (14'/10')
19.814 - 22.593

Base Type (Left / Right)

P / L
19.814 - 22.593

Shoulder Type & Width (Left / Right)

5 (3'/3')
19.695 - 23.662

Through Lanes

2
18.862 - 23.662

Street Name

CHILLICOTHE SOUTH RD
20.707 - 23.302

- | | | | |
|---------------------|-------------------|----------------------|--------------|
| Non-divided Highway | Bridge (on route) | Railroad (at grade) | Intersection |
| Divided Highway | Underpass | Railroad (underpass) | |
| Secondary Segment | Overpass | Railroad (overpass) | |
| Corporation | | | |

Created on: 7/8/2025

transportation.ohio.gov

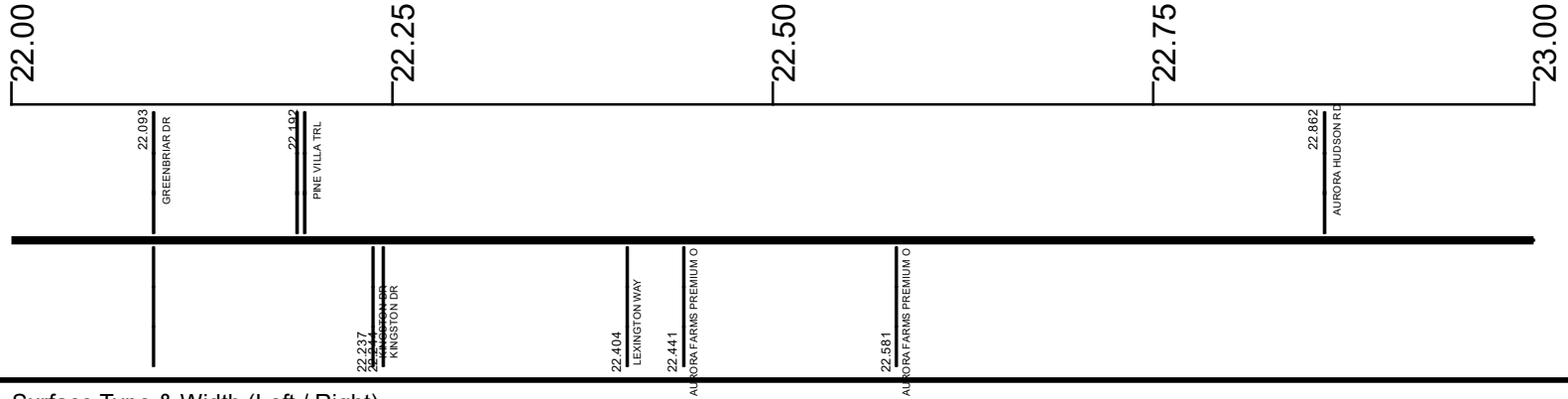
Prepared by
The Ohio Department of Transportation
Office of Technical Services
Roadway Information

SPORSR00043**C

State True Log

98.504

County True Log



Surface Type & Width (Left / Right)

G (14'/10')	G 24'
19.814 - 22.593	22.593 - 23.171

Base Type (Left / Right)

P / L	K
19.814 - 22.593	22.593 - 23.171

Shoulder Type & Width (Left / Right)

5 (3/3)
19.695 - 23.662

Through Lanes

2
18.862 - 23.662

Street Name

CHILLICOTHE SOUTH RD
20.707 - 23.302

- Non-divided Highway
- Divided Highway
- Secondary Segment
- Corporation
- Bridge (on route)
- Underpass
- Overpass
- Railroad (at grade)
- Railroad (underpass)
- Railroad (overpass)
- Intersection

Created on: 7/8/2025

transportation.ohio.gov

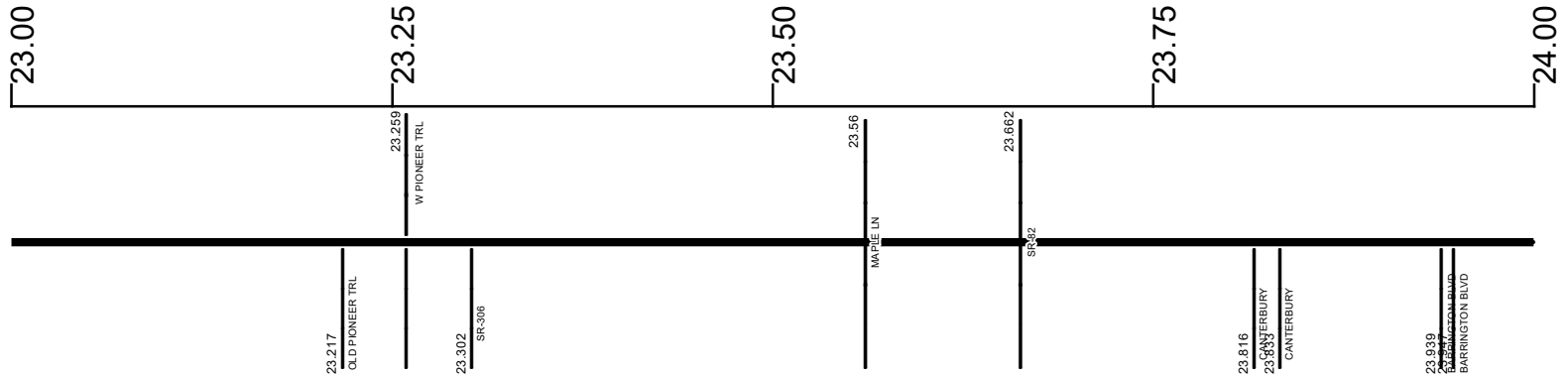
Prepared by
The Ohio Department of Transportation
Office of Technical Services
Roadway Information

SPORSR00043**C

State True Log

99.504

County True Log



Surface Type & Width (Left / Right)

G 24'	G (24'/16')	G (22'/2')	G (22'/10')	G 60'	G (22'/26')	G (22'/38')
22.593 - 23.171	23.171 - 23.302	23.302 - 23.531	23.531 - 23.662	23.662 - 23.77	23.77 - 23.94	23.94 - 24.06

Base Type (Left / Right)

K	K / L	L	K / L
22.593 - 23.171	23.171 - 23.662	23.662 - 23.77	23.77 - 25.53

Shoulder Type & Width (Left / Right)

5 (3'/3')	1 (0'/0')
19.695 - 23.662	23.662 - 26.293

Through Lanes

2	4
18.862 - 23.662	23.662 - 26.293

Street Name

CHILLICOTHE SOUTH RD	AURORA RD
20.707 - 23.302	23.302 - 26.293

- Non-divided Highway
- Divided Highway
- Secondary Segment
- Corporation
- Bridge (on route)
- Underpass
- Overpass
- Railroad (at grade)
- Railroad (underpass)
- Railroad (overpass)
- Intersection

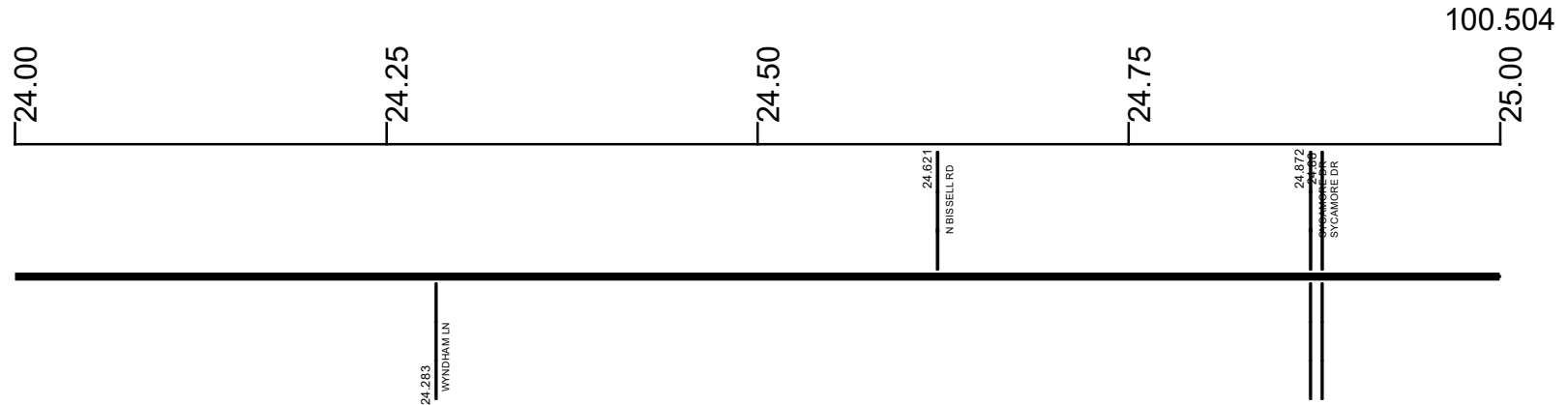
Created on: 7/8/2025

transportation.ohio.gov

Prepared by
The Ohio Department of Transportation
Office of Technical Services
Roadway Information

SPORSR00043**C

State True Log
County True Log



Surface Type & Width (Left / Right)	
G (22'/38')	G (22'/26')
23.94 - 24.06	24.06 - 24.82
G (22'/38')	
24.82 - 25.13	
Base Type (Left / Right)	
K / L	
23.77 - 25.53	
Shoulder Type & Width (Left / Right)	
1 (0'/0')	
23.662 - 26.293	
Through Lanes	
4	
23.662 - 26.293	
Street Name	
AURORA RD	
23.302 - 26.293	

<ul style="list-style-type: none"> Non-divided Highway Divided Highway Secondary Segment Corporation 	<ul style="list-style-type: none"> Bridge (on route) Underpass Overpass 	<ul style="list-style-type: none"> Railroad (at grade) Railroad (underpass) Railroad (overpass) 	<ul style="list-style-type: none"> Intersection
--	---	---	---

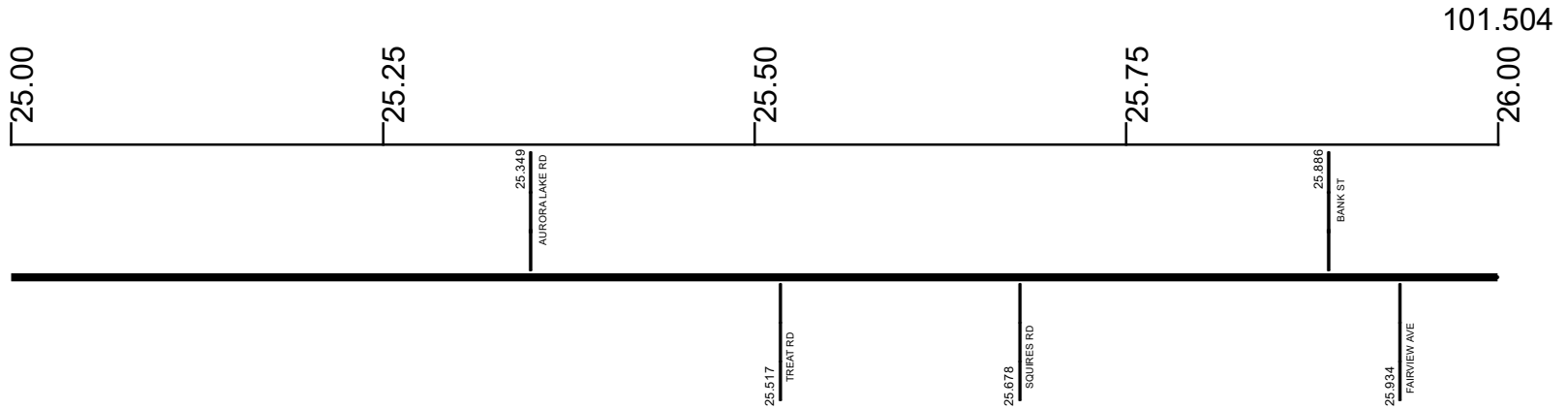
Created on: 7/8/2025

transportation.ohio.gov

Prepared by
The Ohio Department of Transportation
Office of Technical Services
Roadway Information

SPORSR00043**C

State True Log
County True Log



Surface Type & Width (Left / Right)

G (22'/38')	G (22'/26')	G (22'/38')	G 60'	G 50'	G 44'
24.82 - 25.13	25.13 - 25.3	25.3 - 25.53	25.53 - 25.77	25.77 - 25.8	25.8 - 26.293

Base Type (Left / Right)

K / L	L
23.77 - 25.53	25.53 - 26.293

Shoulder Type & Width (Left / Right)

1 (0'/0')	1 (0'/0')
23.662 - 26.293	23.662 - 26.293

Through Lanes

4	4
23.662 - 26.293	23.662 - 26.293

Street Name

AURORA RD	AURORA RD
23.302 - 26.293	23.302 - 26.293

- Non-divided Highway
 Bridge (on route)
 Railroad (at grade)
 Intersection
- Divided Highway
 Underpass
 Railroad (underpass)
- Secondary Segment
 Overpass
 Railroad (overpass)
- Corporation**

Created on: 7/8/2025

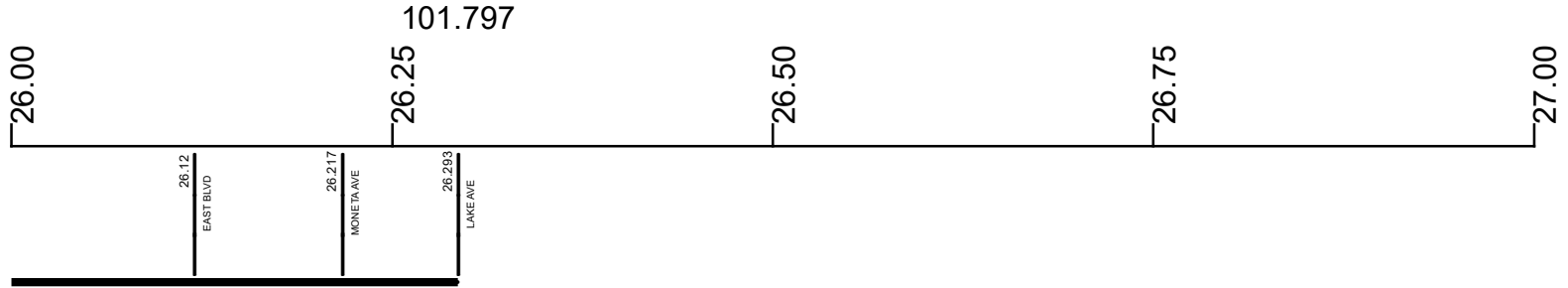
transportation.ohio.gov

Prepared by
The Ohio Department of Transportation
Office of Technical Services
Roadway Information

SPORSR00043**C

State True Log

County True Log



Surface Type & Width (Left / Right)

G 44'
25.8 - 26.293

Base Type (Left / Right)

L
25.53 - 26.293

Shoulder Type & Width (Left / Right)

1 (0/0')
23.662 - 26.293

Through Lanes

4
23.662 - 26.293

Street Name

AURORA RD
23.302 - 26.293

- Non-divided Highway
- Divided Highway
- Secondary Segment
- Corporation
- Bridge (on route)
- Underpass
- Overpass
- Railroad (at grade)
- Railroad (underpass)
- Railroad (overpass)
- Intersection

Created on: 7/8/2025



transportation.ohio.gov
Prepared by
The Ohio Department of Transportation
Office of Technical Services
Roadway Information

Historical Project List for SPORSR00043**C

Begin Measure	End Measure	Project ID Number	Construction Completion Date	Treatment Category	Treatment Type
0.000	7.509	88893	8-2018	Minor Rehabilitation	60-AC Overlay w/Rpr
7.509	8.149	102352	9-2018	Preventive Maintenance	31-DbI Appl Micro
8.149	8.499	88893	8-2018	Minor Rehabilitation	60-AC Overlay w/Rpr
8.499	10.228	102352	9-2018	Preventive Maintenance	31-DbI Appl Micro
8.499	9.838	9693	5-2007	Major Rehabilitation	100-New Flexible Pvmt
10.208	11.438	25444	8-2007	Minor Rehabilitation	60-AC Overlay w/Rpr
10.228	11.428	93442	9-2019	Minor Rehabilitation	60-AC Overlay w/Rpr
11.438	11.665	22574	8-2005	Minor Rehabilitation	60-AC Overlay w/Rpr
11.865	12.145	101270	11-2023	Minor Rehabilitation	40-CPR
12.195	13.206	23757	7-2005	Minor Rehabilitation	60-AC Overlay w/Rpr
12.245	12.376	101270	11-2023	Minor Rehabilitation	38-Fine Poly AC Overlay
12.376	13.206	101270	11-2023	Minor Rehabilitation	60-AC Overlay w/Rpr
13.206	15.594	86930	10-2014	Minor Rehabilitation	60-AC Overlay w/Rpr
17.974	19.194	21062	9-2005	New Construction	200-New Pavement
19.014	20.124	25535	5-2007	Minor Rehabilitation	60-AC Overlay w/Rpr
19.764	20.663	98378	7-2020	Minor Rehabilitation	60-AC Overlay w/Rpr
20.723	23.693	86963	10-2016	Minor Rehabilitation	60-AC Overlay w/Rpr
23.313	26.293	22464	7-2004	Minor Rehabilitation	60-AC Overlay w/Rpr

Roadway Codes

Access Control Journalized

- F - Full Access Control
- L - Limited Access Control
- N - No Access Control

Access Control Operational

- 1 - Full Access Control
- 2 - Partial Access Control
- 3 - No Access Control

Base Type

- F - Crack and Seat
- H - Rubblize and Roll
- I - Aggregate Base 304 or Traffic Compacted
- K - Water Bound Macadam
- L - Bituminous Concrete Mix or Penetration Macadam
- N - Plain Concrete
- P - Reinforced Concrete
- R - Brick (Flexible)
- T - Brick (Rigid)

Direction of Travel

- B - Both (Two-way)
- F - One-way Cardinal
- T - One-way Non-cardinal

Facility Type

- 1 - One-way Roadway
- 2 - Two-way Roadway
- 4 - Ramp
- 5 - Non-mainline
- 6 - Non-inventory Direction
- 7 - Planned / Unbuilt

Historical Federal Aid Indicator

- N - Not a FAP Route
- Y - FAP Route

Functional Classification

- 01 - Interstate
- 02 - Principal Arterial (Freeways)
- 03 - Principal Arterial (Other)
- 04 - Minor Arterial
- 05 - Major Collector
- 06 - Minor Collector
- 07 - Local

Leave / Reenter Indicator

- Y - Route leaves/reenters at this point
- N - Route does not leave/reenter at this point

Median Type

- 1 - None
- 2 - Unprotected
- 3 - Curbed
- 4 - Positive Barrier (Unspecified)
- 5 - Positive Barrier (Flexible)
- 6 - Positive Barrier (Semi-rigid)
- 7 - Positive Barrier (Rigid)

NHS

- N - National Highway System
- H - Congressional Corridor
- 2 - Major Airport
- 3 - Major Port Facility
- 4 - Major Amtrak Station
- 5 - Major Rail / Truck Terminal
- 6 - Major Intercity Bus Terminal
- 7 - Major Public Transit / Multi-modal Passenger Terminal
- 8 - Major Pipeline Terminal
- 9 - Major Ferry Terminal

Priority System

- G - General
- P - Priority System
- U - Urban

Scenic Byway Code

- A - All American Road
- N - National Scenic Byway
- S - State Scenic Byway

Shoulder Type

- 1 - None
- 2 - Surfaced shoulder exists (bituminous concrete {AC})
- 3 - Surfaced shoulder exists (Portland Cement Concrete {PCC})
- 4 - Stabilized shoulder exists (gravel or other granular material)
- 5 - Combination shoulder exists (two or more surface types)
- 6 - Earth shoulder exists
- 7 - Barrier curb exists; no shoulder in front of curb

Surface Type

- A - Combination
- B - Brick
- C - Continuous Reinforced Concrete
- D - Reinforced Concrete
- E - Plain Concrete
- G - Bituminous Concrete
- I - Chipseal on Granular
- K - Open Graded Bituminous
- L - Chipseal or Micro
- M - Gravel
- U - Unimproved
- X - Right of Way Only