

SROSSR00327**C

State True Log 28.069

29.069

County True Log



Begin overlap w/
SROSUS00050**C
@ 37.594

- | | | | |
|---|---|---|---|
| <ul style="list-style-type: none"> Non-divided Highway Divided Highway Secondary Segment Corporation | <ul style="list-style-type: none"> Bridge (on route) Underpass Overpass | <ul style="list-style-type: none"> Railroad (at grade) Railroad (underpass) Railroad (overpass) | <ul style="list-style-type: none"> Intersection |
|---|---|---|---|

Created on: 7/8/2025

transportation.ohio.gov

Prepared by
The Ohio Department of Transportation
Office of Technical Services
Roadway Information

SROSSR00327**C

State True Log

30.069

County True Log



- | | | | |
|---|---|---|---|
| <ul style="list-style-type: none"> Non-divided Highway Divided Highway Secondary Segment Corporation | <ul style="list-style-type: none"> Bridge (on route) Underpass Overpass | <ul style="list-style-type: none"> Railroad (at grade) Railroad (underpass) Railroad (overpass) | <ul style="list-style-type: none"> Intersection |
|---|---|---|---|

Created on: 7/8/2025

transportation.ohio.gov

Prepared by

The Ohio Department of Transportation

Office of Technical Services

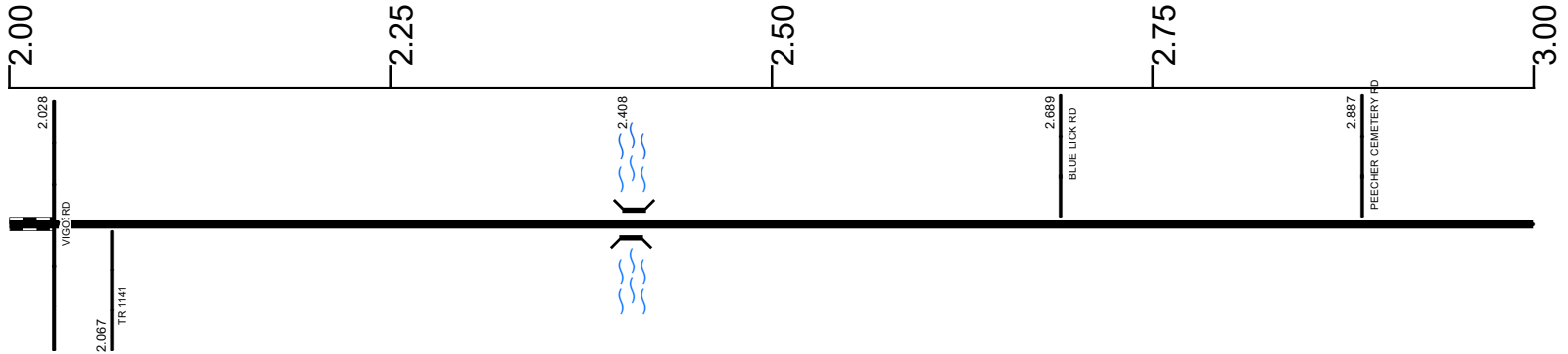
Roadway Information

SROSSR00327**C

State True Log

31.069

County True Log



Surface Type & Width (Left / Right)

G 20'
2.028 - 7.567

Base Type (Left / Right)

I
2.028 - 7.945

Shoulder Type & Width (Left / Right)

2 (4'/4')
2.028 - 4.611

Resurface Year

2022
2.028 - 7.945

Through Lanes

2
2.028 - 7.945

Street Name

SR 327
2.028 - 7.542

- | | | | |
|---------------------|-------------------|----------------------|--------------|
| Non-divided Highway | Bridge (on route) | Railroad (at grade) | Intersection |
| Divided Highway | Underpass | Railroad (underpass) | |
| Secondary Segment | Overpass | Railroad (overpass) | |
| Corporation | | | |

Created on: 7/8/2025



transportation.ohio.gov

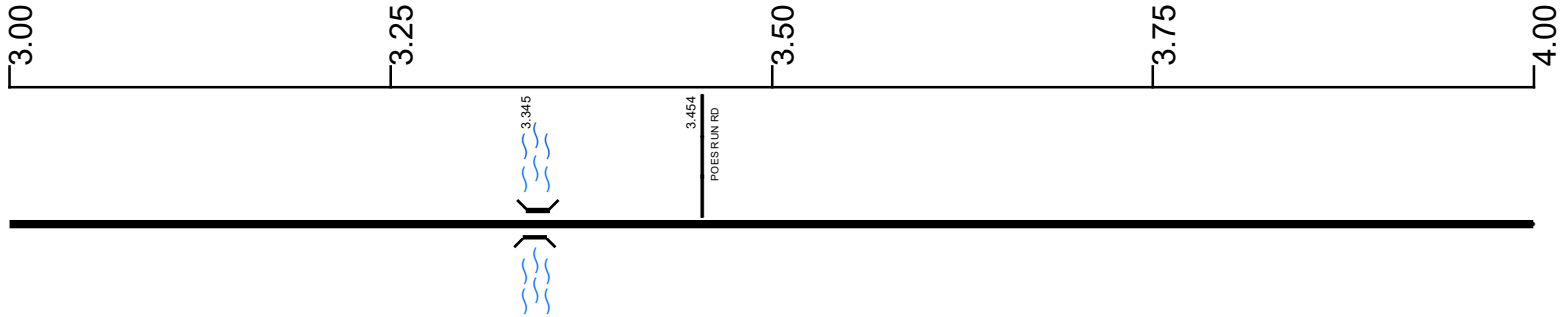
Prepared by
The Ohio Department of Transportation
Office of Technical Services
Roadway Information

SROSSR00327**C

State True Log

32.069

County True Log



Surface Type & Width (Left / Right)

G 20'
2.028 - 7.567

Base Type (Left / Right)

I
2.028 - 7.945

Shoulder Type & Width (Left / Right)

2 (4/4')
2.028 - 4.611

Resurface Year

2022
2.028 - 7.945

Through Lanes

2
2.028 - 7.945

Street Name

SR 327
2.028 - 7.542

- | | | | |
|---------------------|-------------------|----------------------|--------------|
| Non-divided Highway | Bridge (on route) | Railroad (at grade) | Intersection |
| Divided Highway | Underpass | Railroad (underpass) | |
| Secondary Segment | Overpass | Railroad (overpass) | |
| Corporation | | | |

Created on: 7/8/2025

transportation.ohio.gov

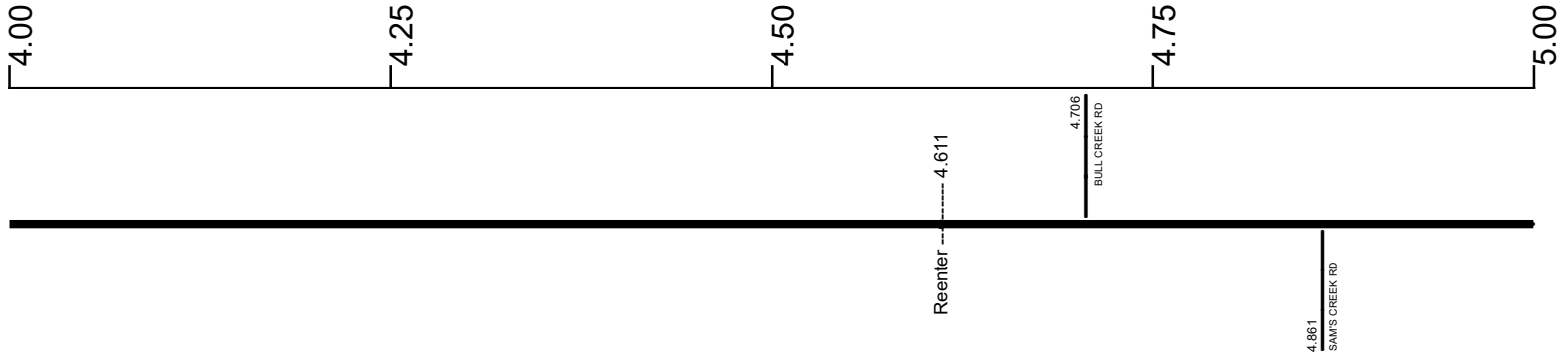
Prepared by
The Ohio Department of Transportation
Office of Technical Services
Roadway Information

SROSSR00327**C

State True Log

33.069

County True Log



Surface Type & Width (Left / Right)

G 20'
2.028 - 7.567

Base Type (Left / Right)

I
2.028 - 7.945

Shoulder Type & Width (Left / Right)

2 (4'4") 2.028 - 4.611	2 (3'3") 4.611 - 5.617
---------------------------	---------------------------

Resurface Year

2022
2.028 - 7.945

Through Lanes

2
2.028 - 7.945

Street Name

SR 327
2.028 - 7.542

- | | | | |
|---------------------|-------------------|----------------------|--------------|
| Non-divided Highway | Bridge (on route) | Railroad (at grade) | Intersection |
| Divided Highway | Underpass | Railroad (underpass) | |
| Secondary Segment | Overpass | Railroad (overpass) | |
| Corporation | | | |

Created on: 7/8/2025

transportation.ohio.gov

Prepared by
The Ohio Department of Transportation
Office of Technical Services
Roadway Information

SROSSR00327**C

State True Log

34.069

County True Log



Surface Type & Width (Left / Right)

G 20'	
2.028 - 7.567	

Base Type (Left / Right)

I	
2.028 - 7.945	

Shoulder Type & Width (Left / Right)

2 (3/3')	2 (2/2')
4.611 - 5.617	5.617 - 7.776

Resurface Year

2022	
2.028 - 7.945	

Through Lanes

2	
2.028 - 7.945	

Street Name

SR 327	
2.028 - 7.542	

- | | | | |
|--|---|---|---|
| <ul style="list-style-type: none"> Non-divided Highway Divided Highway Secondary Segment Corporation | <ul style="list-style-type: none"> Bridge (on route) Underpass Overpass | <ul style="list-style-type: none"> Railroad (at grade) Railroad (underpass) Railroad (overpass) | <ul style="list-style-type: none"> Intersection |
|--|---|---|---|

Created on: 7/8/2025

transportation.ohio.gov

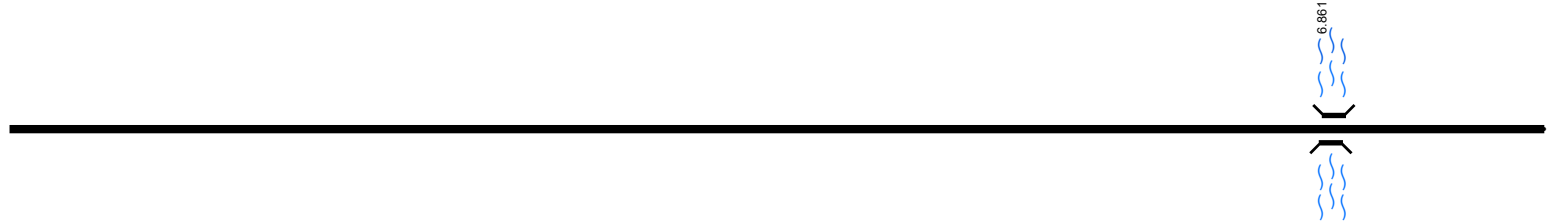
Prepared by
The Ohio Department of Transportation
Office of Technical Services
Roadway Information

SROSSR00327**C

State True Log

35.069

County True Log



Surface Type & Width (Left / Right)

G 20'
2.028 - 7.567

Base Type (Left / Right)

I
2.028 - 7.945

Shoulder Type & Width (Left / Right)

2 (2'/2)
5.617 - 7.776

Resurface Year

2022
2.028 - 7.945

Through Lanes

2
2.028 - 7.945

Street Name

SR 327
2.028 - 7.542

- Non-divided Highway
 Bridge (on route)
 Railroad (at grade)
 Intersection
- Divided Highway
 Underpass
 Railroad (underpass)
- Secondary Segment
 Overpass
 Railroad (overpass)
- Corporation**

Created on: 7/8/2025



transportation.ohio.gov

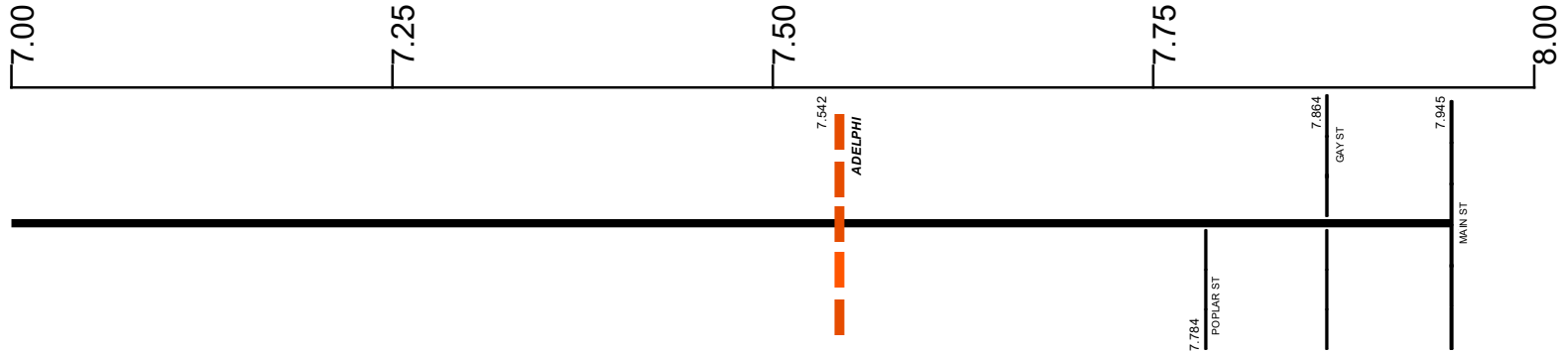
Prepared by
The Ohio Department of Transportation
Office of Technical Services
Roadway Information

SROSSR00327**C

State True Log

47.203

County True Log



Surface Type & Width (Left / Right)

G 20' 2.028 - 7.567	G 16' 7.567 - 7.776	G 34' 7.776 - 7.945
------------------------	------------------------	------------------------

Base Type (Left / Right)

I 2.028 - 7.945

Shoulder Type & Width (Left / Right)

2 (2'/2') 5.617 - 7.776	2 (6'/6') 7.776 - 7.945
----------------------------	----------------------------

Resurface Year

2022 2.028 - 7.945

Through Lanes

2 2.028 - 7.945

Street Name

SR 327 2.028 - 7.542	CONCORD ST 7.542 - 7.945
-------------------------	-----------------------------

- | | | | |
|--|---|---|---|
| <ul style="list-style-type: none"> Non-divided Highway Divided Highway Secondary Segment Corporation | <ul style="list-style-type: none"> Bridge (on route) Underpass Overpass | <ul style="list-style-type: none"> Railroad (at grade) Railroad (underpass) Railroad (overpass) | <ul style="list-style-type: none"> Intersection |
|--|---|---|---|

Created on: 7/8/2025

transportation.ohio.gov

Prepared by
The Ohio Department of Transportation
Office of Technical Services
Roadway Information

Historical Project List for SROSSR00327**C

Begin Measure	End Measure	Project ID Number	Construction Completion Date	Treatment Category	Treatment Type
2.028	4.611	109844	10-2022	Minor Rehabilitation	60-AC Overlay w/Rpr
2.028	4.611	19277	11-2009	Minor Rehabilitation	60-AC Overlay w/Rpr
4.611	5.617	109844	10-2022	Minor Rehabilitation	60-AC Overlay w/Rpr
4.611	5.617	19277	11-2009	Minor Rehabilitation	60-AC Overlay w/Rpr
5.617	7.945	109844	10-2022	Minor Rehabilitation	60-AC Overlay w/Rpr
5.617	7.945	19277	11-2009	Minor Rehabilitation	60-AC Overlay w/Rpr

Roadway Codes

Access Control Journalized

- F - Full Access Control
- L - Limited Access Control
- N - No Access Control

Access Control Operational

- 1 - Full Access Control
- 2 - Partial Access Control
- 3 - No Access Control

Base Type

- F - Crack and Seat
- H - Rubblize and Roll
- I - Aggregate Base 304 or Traffic Compacted
- K - Water Bound Macadam
- L - Bituminous Concrete Mix or Penetration Macadam
- N - Plain Concrete
- P - Reinforced Concrete
- R - Brick (Flexible)
- T - Brick (Rigid)

Direction of Travel

- B - Both (Two-way)
- F - One-way Cardinal
- T - One-way Non-cardinal

Facility Type

- 1 - One-way Roadway
- 2 - Two-way Roadway
- 4 - Ramp
- 5 - Non-mainline
- 6 - Non-inventory Direction
- 7 - Planned / Unbuilt

Historical Federal Aid Indicator

- N - Not a FAP Route
- Y - FAP Route

Functional Classification

- 01 - Interstate
- 02 - Principal Arterial (Freeways)
- 03 - Principal Arterial (Other)
- 04 - Minor Arterial
- 05 - Major Collector
- 06 - Minor Collector
- 07 - Local

Leave / Reenter Indicator

- Y - Route leaves/reenters at this point
- N - Route does not leave/reenter at this point

Median Type

- 1 - None
- 2 - Unprotected
- 3 - Curbed
- 4 - Positive Barrier (Unspecified)
- 5 - Positive Barrier (Flexible)
- 6 - Positive Barrier (Semi-rigid)
- 7 - Positive Barrier (Rigid)

NHS

- N - National Highway System
- H - Congressional Corridor
- 2 - Major Airport
- 3 - Major Port Facility
- 4 - Major Amtrak Station
- 5 - Major Rail / Truck Terminal
- 6 - Major Intercity Bus Terminal
- 7 - Major Public Transit / Multi-modal Passenger Terminal
- 8 - Major Pipeline Terminal
- 9 - Major Ferry Terminal

Priority System

- G - General
- P - Priority System
- U - Urban

Scenic Byway Code

- A - All American Road
- N - National Scenic Byway
- S - State Scenic Byway

Shoulder Type

- 1 - None
- 2 - Surfaced shoulder exists (bituminous concrete {AC})
- 3 - Surfaced shoulder exists (Portland Cement Concrete {PCC})
- 4 - Stabilized shoulder exists (gravel or other granular material)
- 5 - Combination shoulder exists (two or more surface types)
- 6 - Earth shoulder exists
- 7 - Barrier curb exists; no shoulder in front of curb

Surface Type

- A - Combination
- B - Brick
- C - Continuous Reinforced Concrete
- D - Reinforced Concrete
- E - Plain Concrete
- G - Bituminous Concrete
- I - Chipseal on Granular
- K - Open Graded Bituminous
- L - Chipseal or Micro
- M - Gravel
- U - Unimproved
- X - Right of Way Only