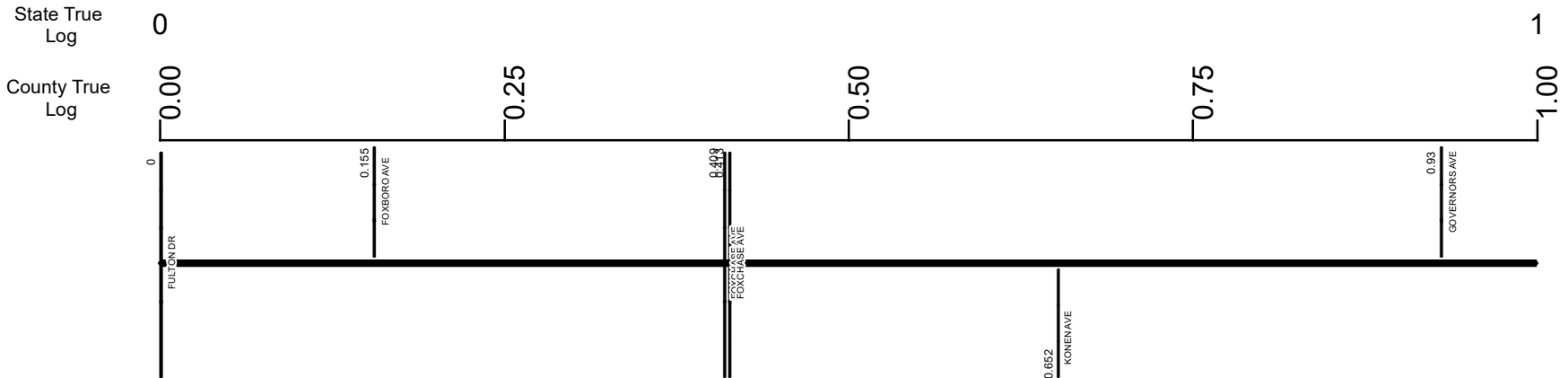


SSTASR00687**C



Surface Type & Width (Left / Right)		
G 64'	G (20'4')	G 36'
0 - 0.361	0.361 - 0.93	0.93 - 1.018
Base Type (Left / Right)		
L	T / L	
0 - 0.361	0.361 - 1.546	
Shoulder Type & Width (Left / Right)		
1 (0'0")	5 (2'2")	
0 - 0.361	0.361 - 1.207	
Through Lanes		
4	2	
0 - 0.361	0.361 - 1.207	
Street Name		
FULTON DR		
0 - 5.539		

Non-divided Highway	Bridge (on route)	Railroad (at grade)	Intersection
Divided Highway	Underpass	Railroad (underpass)	
Secondary Segment	Overpass	Railroad (overpass)	
Corporation			

Created on: 7/8/2025

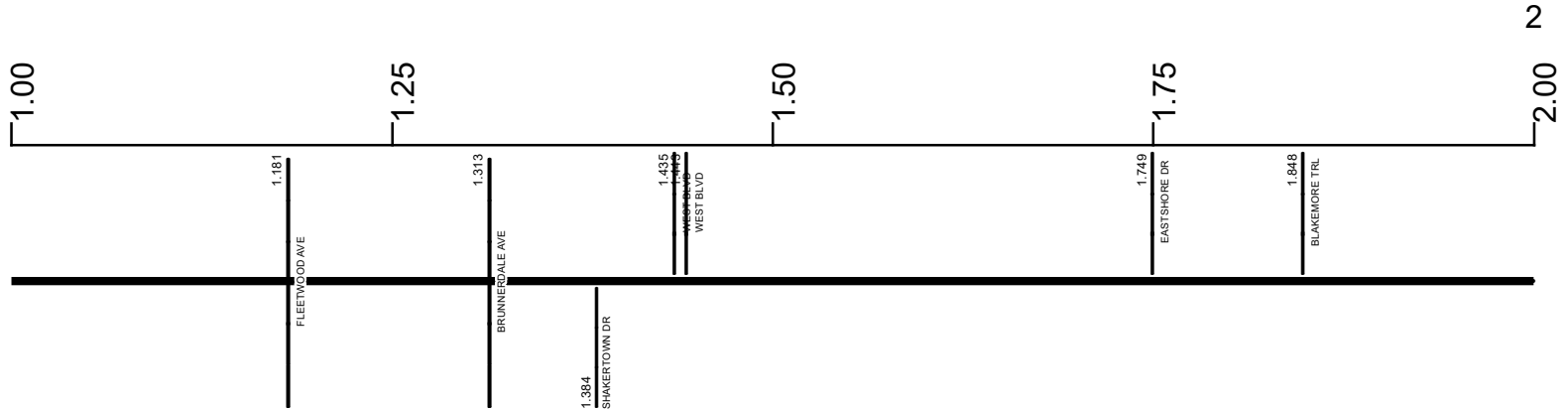
transportation.ohio.gov

Prepared by
The Ohio Department of Transportation
Office of Technical Services
Roadway Information

SSTASR00687**C

State True Log

County True Log



Surface Type & Width (Left / Right)

G 36'	G 60'	G (24'/36')	G (20'/40')	G 60'	G (20'/40')
0.93 - 1.018	1.018 - 1.207	1.207 - 1.313	1.313 - 1.546	1.546 - 1.838	1.838 - 4.078

Base Type (Left / Right)

T / L	L	T / I
0.361 - 1.546	1.546 - 1.838	1.838 - 2.565

Shoulder Type & Width (Left / Right)

5 (2'/2')	1 (2'/2')	1 (0'/0')
0.361 - 1.207	1.207 - 1.313	1.313 - 5.539

Resurface Year

2023	1.4 - 5.26
------	------------

Through Lanes

2	4
0.361 - 1.207	1.207 - 5.539

Street Name

FULTON DR
0 - 5.539

- Non-divided Highway
- Divided Highway
- Secondary Segment
- Corporation
- Bridge (on route)
- Underpass
- Overpass
- Railroad (at grade)
- Railroad (underpass)
- Railroad (overpass)
- Intersection

Created on: 7/8/2025

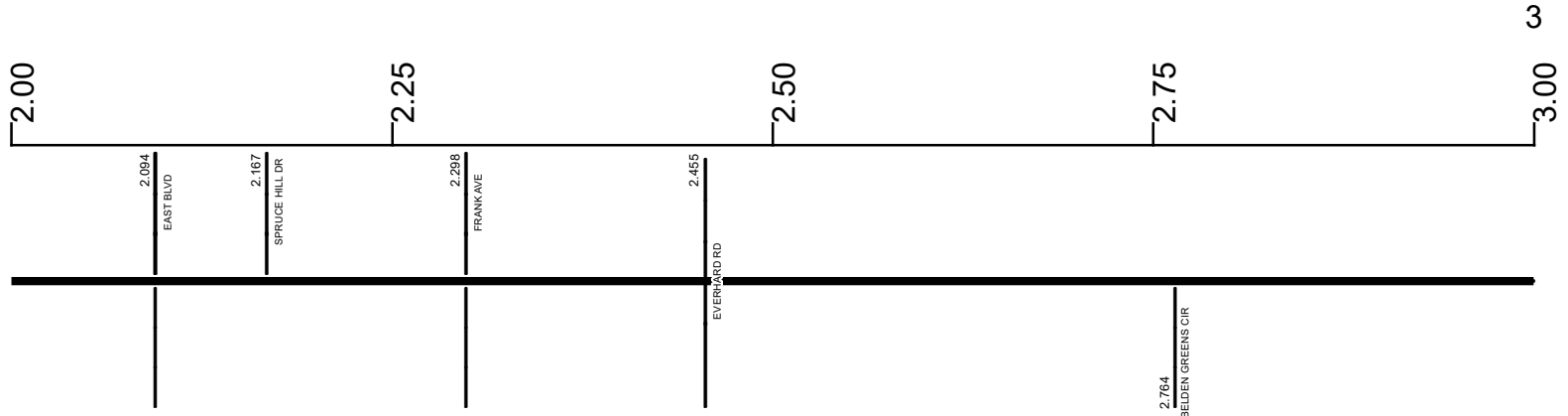
transportation.ohio.gov

Prepared by
The Ohio Department of Transportation
Office of Technical Services
Roadway Information

SSTASR00687**C

State True Log

County True Log



Surface Type & Width (Left / Right)

G (20'/40')
1.838 - 4.078

Base Type (Left / Right)

T / I 1.838 - 2.565	T / L 2.565 - 5.291
------------------------	------------------------

Shoulder Type & Width (Left / Right)

1 (0'/0')
1.313 - 5.539

Resurface Year

2023

Through Lanes

4
1.207 - 5.539

Street Name

FULTON DR
0 - 5.539

- | | | | |
|---------------------|-------------------|----------------------|--------------|
| Non-divided Highway | Bridge (on route) | Railroad (at grade) | Intersection |
| Divided Highway | Underpass | Railroad (underpass) | |
| Secondary Segment | Overpass | Railroad (overpass) | |
| Corporation | | | |

Created on: 7/8/2025

transportation.ohio.gov

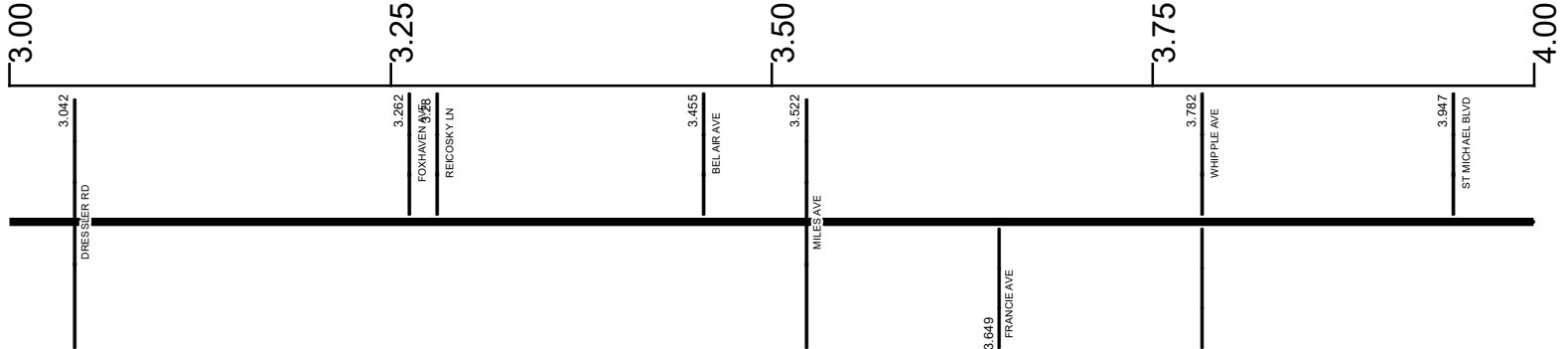
Prepared by
The Ohio Department of Transportation
Office of Technical Services
Roadway Information

SSTASR00687**C

State True Log

4

County True Log



Surface Type & Width (Left / Right)	G (20'/40')
	1.838 - 4.078
Base Type (Left / Right)	T / L
	2.565 - 5.291
Shoulder Type & Width (Left / Right)	1 (0'/0')
	1.313 - 5.539
Resurface Year	2023
Through Lanes	1.4 - 5.26
	4
Street Name	FULTON DR
	0 - 5.539

Non-divided Highway	Bridge (on route)	Railroad (at grade)	Intersection
Divided Highway	Underpass	Railroad (underpass)	
Secondary Segment	Overpass	Railroad (overpass)	
Corporation			

Created on: 7/8/2025

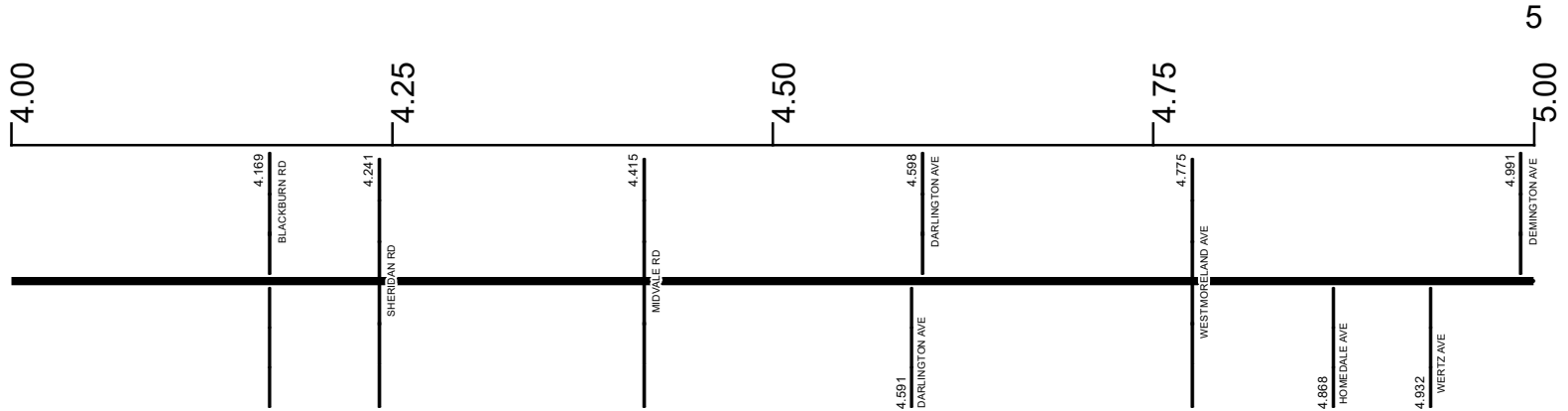


transportation.ohio.gov
 Prepared by
 The Ohio Department of Transportation
 Office of Technical Services
 Roadway Information

SSTASR00687**C

State True Log

County True Log



Surface Type & Width (Left / Right)

G (20'/40')	G 60'	G (30'/24')
1.838 - 4.078	4.078 - 4.129	4.129 - 5.291

Base Type (Left / Right)

	T / L
	2.565 - 5.291

Shoulder Type & Width (Left / Right)

	1 (0'/0')
	1.313 - 5.539

Resurface Year

	2023
--	------

Through Lanes

	4
	1.207 - 5.539

Street Name

	FULTON DR
	0 - 5.539

- Non-divided Highway
- Divided Highway
- Secondary Segment
- Corporation
- Bridge (on route)
- Underpass
- Overpass
- Railroad (at grade)
- Railroad (underpass)
- Railroad (overpass)
- Intersection

Created on: 7/8/2025

transportation.ohio.gov

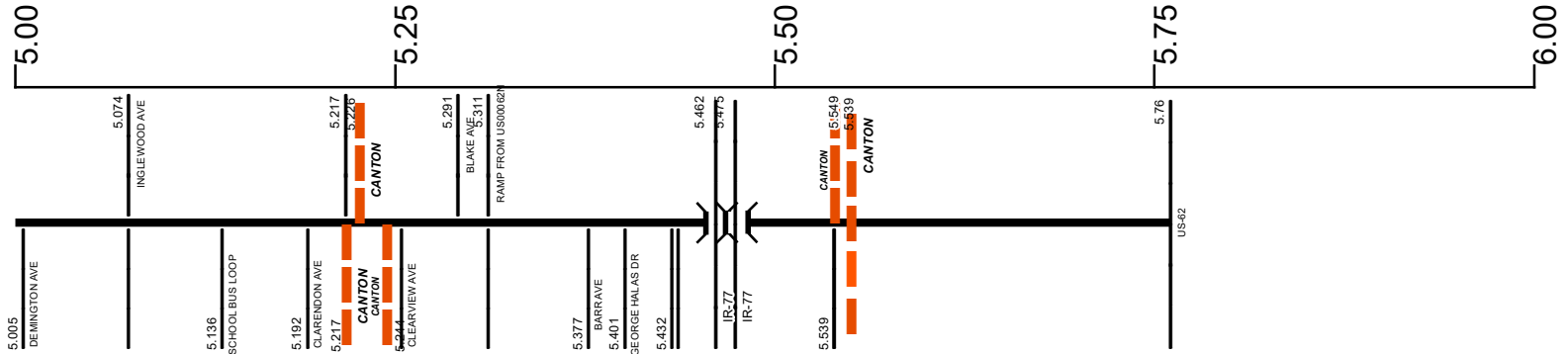
Prepared by
The Ohio Department of Transportation
Office of Technical Services
Roadway Information

SSTASR00687**C

State True Log

County True Log

5.76



Surface Type & Width (Left / Right)

G (30'/24')	G 64' G (30'/38')	G 52'
4.129 - 5.291	5.291 - 5.377	5.401 - 5.76

Base Type (Left / Right)

T / L
2.565 - 5.291

Base Type (Left / Right)

T	L
5.311 - 5.539	5.539 - 5.76

Shoulder Type & Width (Left / Right)

1 (0'/0')	2 (10'/10')
1.313 - 5.539	5.539 - 5.76

Resurface Year

2023
1.4 - 5.26

Resurface Year

2020
5.539 - 5.76

Through Lanes

4	2
1.207 - 5.539	5.539 - 5.76

Street Name

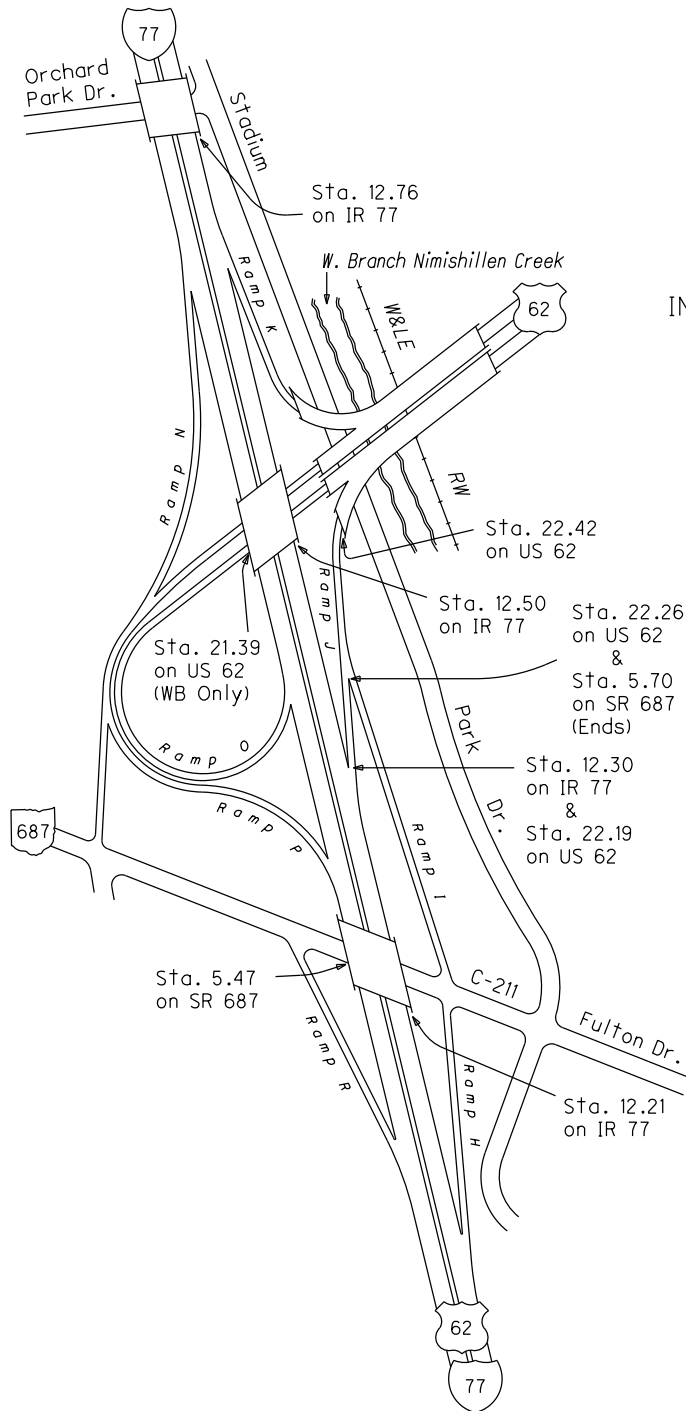
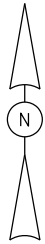
FULTON DR	FULTON RD NW TO US 62 E
0 - 5.539	5.539 - 5.76

- Non-divided Highway
- Divided Highway
- Secondary Segment
- Corporation
- Bridge (on route)
- Underpass
- Overpass
- Railroad (at grade)
- Railroad (underpass)
- Railroad (overpass)
- Intersection

Created on: 7/8/2025

transportation.ohio.gov

Prepared by
The Ohio Department of Transportation
Office of Technical Services
Roadway Information



INTERCHANGE
IR 77, US 62, SR 687
& Fulton Dr. (C-211)
STARK COUNTY
INTERCHANGE ID NUMBER = 081500

IR77 SHEET 3 OF 4
US62 SHEET 5 OF 8
SR687 SHEET 2 OF 2

REVISED Jan 2013

Historical Project List for SSTASR00687**C

Begin Measure	End Measure	Project ID Number	Construction Completion Date	Treatment Category	Treatment Type
0.000	0.358	100287	10-2017	Preventive Maintenance	30-Microsurfacing
0.000	1.313	22788	11-2002	Minor Rehabilitation	60-AC Overlay w/Rpr
0.358	1.207	88905	7-2017	Minor Rehabilitation	38-Fine Poly AC Overlay
0.920	1.403	87660	1-2023	Minor Rehabilitation	60-AC Overlay w/Rpr
1.207	2.565	88905	7-2017	Minor Rehabilitation	60-AC Overlay w/Rpr
1.403	3.022	114922	8-2023	Minor Rehabilitation	38-Fine Poly AC Overlay
1.940	3.782	6256	12-2001	Minor Rehabilitation	60-AC Overlay w/Rpr
2.565	3.782	100287	10-2017	Preventive Maintenance	31-DbI Appl Micro
3.022	3.063	111011	2-2023	Major Rehabilitation	100-New Flexible Pvmt
3.063	5.262	114922	8-2023	Minor Rehabilitation	38-Fine Poly AC Overlay
5.271	5.539	100290	4-2020	Minor Rehabilitation	60-AC Overlay w/Rpr

Roadway Codes

Access Control Journalized

- F - Full Access Control
- L - Limited Access Control
- N - No Access Control

Access Control Operational

- 1 - Full Access Control
- 2 - Partial Access Control
- 3 - No Access Control

Base Type

- F - Crack and Seat
- H - Rubblize and Roll
- I - Aggregate Base 304 or Traffic Compacted
- K - Water Bound Macadam
- L - Bituminous Concrete Mix or Penetration Macadam
- N - Plain Concrete
- P - Reinforced Concrete
- R - Brick (Flexible)
- T - Brick (Rigid)

Direction of Travel

- B - Both (Two-way)
- F - One-way Cardinal
- T - One-way Non-cardinal

Facility Type

- 1 - One-way Roadway
- 2 - Two-way Roadway
- 4 - Ramp
- 5 - Non-mainline
- 6 - Non-inventory Direction
- 7 - Planned / Unbuilt

Historical Federal Aid Indicator

- N - Not a FAP Route
- Y - FAP Route

Functional Classification

- 01 - Interstate
- 02 - Principal Arterial (Freeways)
- 03 - Principal Arterial (Other)
- 04 - Minor Arterial
- 05 - Major Collector
- 06 - Minor Collector
- 07 - Local

Leave / Reenter Indicator

- Y - Route leaves/reenters at this point
- N - Route does not leave/reenter at this point

Median Type

- 1 - None
- 2 - Unprotected
- 3 - Curbed
- 4 - Positive Barrier (Unspecified)
- 5 - Positive Barrier (Flexible)
- 6 - Positive Barrier (Semi-rigid)
- 7 - Positive Barrier (Rigid)

NHS

- N - National Highway System
- H - Congressional Corridor
- 2 - Major Airport
- 3 - Major Port Facility
- 4 - Major Amtrak Station
- 5 - Major Rail / Truck Terminal
- 6 - Major Intercity Bus Terminal
- 7 - Major Public Transit / Multi-modal Passenger Terminal
- 8 - Major Pipeline Terminal
- 9 - Major Ferry Terminal

Priority System

- G - General
- P - Priority System
- U - Urban

Scenic Byway Code

- A - All American Road
- N - National Scenic Byway
- S - State Scenic Byway

Shoulder Type

- 1 - None
- 2 - Surfaced shoulder exists (bituminous concrete {AC})
- 3 - Surfaced shoulder exists (Portland Cement Concrete {PCC})
- 4 - Stabilized shoulder exists (gravel or other granular material)
- 5 - Combination shoulder exists (two or more surface types)
- 6 - Earth shoulder exists
- 7 - Barrier curb exists; no shoulder in front of curb

Surface Type

- A - Combination
- B - Brick
- C - Continuous Reinforced Concrete
- D - Reinforced Concrete
- E - Plain Concrete
- G - Bituminous Concrete
- I - Chipseal on Granular
- K - Open Graded Bituminous
- L - Chipseal or Micro
- M - Gravel
- U - Unimproved
- X - Right of Way Only