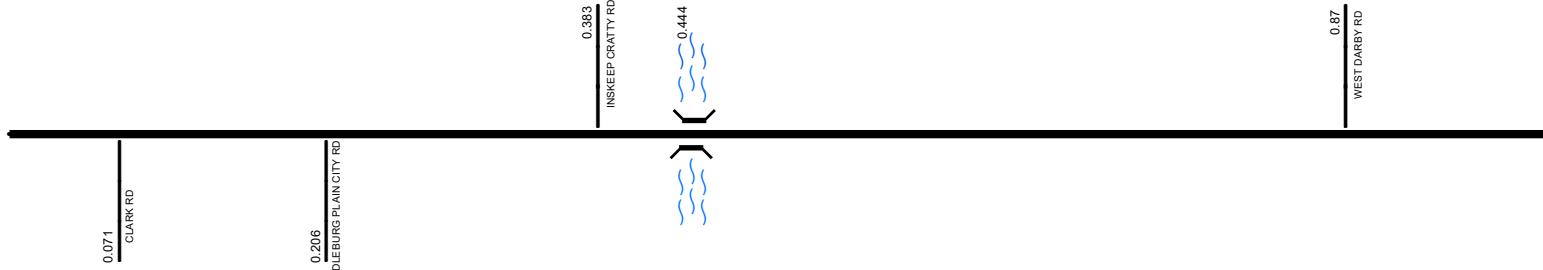
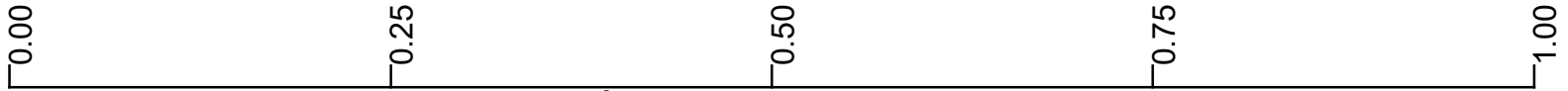


SUNISR00245**C

State True Log 28.38

29.38

County True Log



Surface Type & Width (Left / Right)

G 22'
0 - 7.331

Base Type (Left / Right)

I
0 - 7.101

Shoulder Type & Width (Left / Right)

5 (1/1)
0 - 7.101

Resurface Year

2024
0 - 7.331

Through Lanes

2
0 - 7.331

Street Name

SR 245
0 - 7.331

- Non-divided Highway
- Divided Highway
- Secondary Segment
- Corporation
- Bridge (on route)
- Underpass
- Overpass
- Railroad (at grade)
- Railroad (underpass)
- Railroad (overpass)
- Intersection

Created on: 7/9/2025

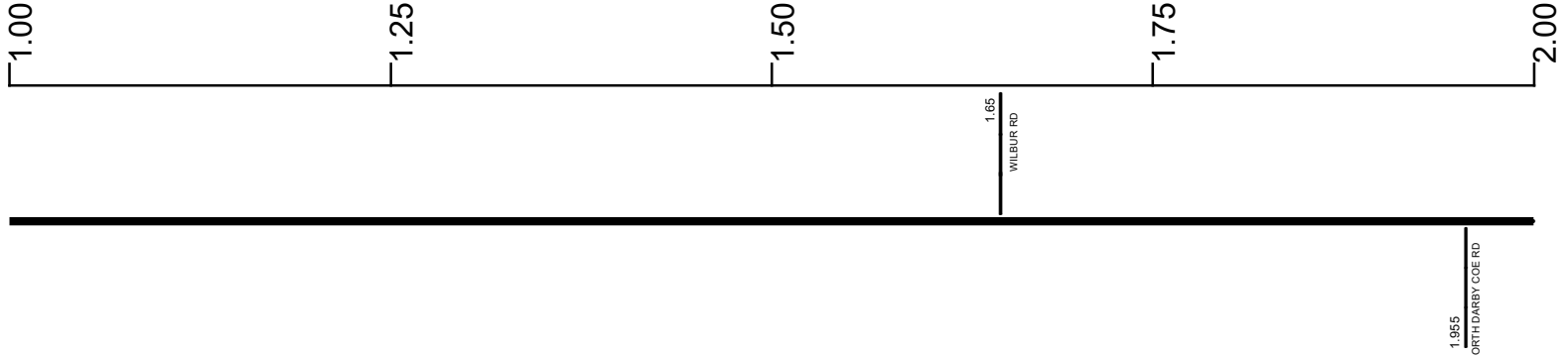
transportation.ohio.gov
Prepared by
The Ohio Department of Transportation
Office of Technical Services
Roadway Information

SUNISR00245**C

State True Log

30.38

County True Log



Surface Type & Width (Left / Right)

G 22'
0 - 7.331

Base Type (Left / Right)

I
0 - 7.101

Shoulder Type & Width (Left / Right)

5 (1/1')
0 - 7.101

Resurface Year

2024
0 - 7.331

Through Lanes

2
0 - 7.331

Street Name

SR 245
0 - 7.331

- | | | | |
|---------------------|-------------------|----------------------|--------------|
| Non-divided Highway | Bridge (on route) | Railroad (at grade) | Intersection |
| Divided Highway | Underpass | Railroad (underpass) | |
| Secondary Segment | Overpass | Railroad (overpass) | |
| Corporation | | | |

Created on: 7/9/2025

transportation.ohio.gov

Prepared by
The Ohio Department of Transportation
Office of Technical Services
Roadway Information

SUNISR00245**C

State True Log

31.38

County True Log



Surface Type & Width (Left / Right)

G 22'
0 - 7.331

Base Type (Left / Right)

I
0 - 7.101

Shoulder Type & Width (Left / Right)

5 (1/1')
0 - 7.101

Resurface Year

2024
0 - 7.331

Through Lanes

2
0 - 7.331

Street Name

SR 245
0 - 7.331

- | | | | |
|---------------------|-------------------|----------------------|--------------|
| Non-divided Highway | Bridge (on route) | Railroad (at grade) | Intersection |
| Divided Highway | Underpass | Railroad (underpass) | |
| Secondary Segment | Overpass | Railroad (overpass) | |
| Corporation | | | |

Created on: 7/9/2025

transportation.ohio.gov

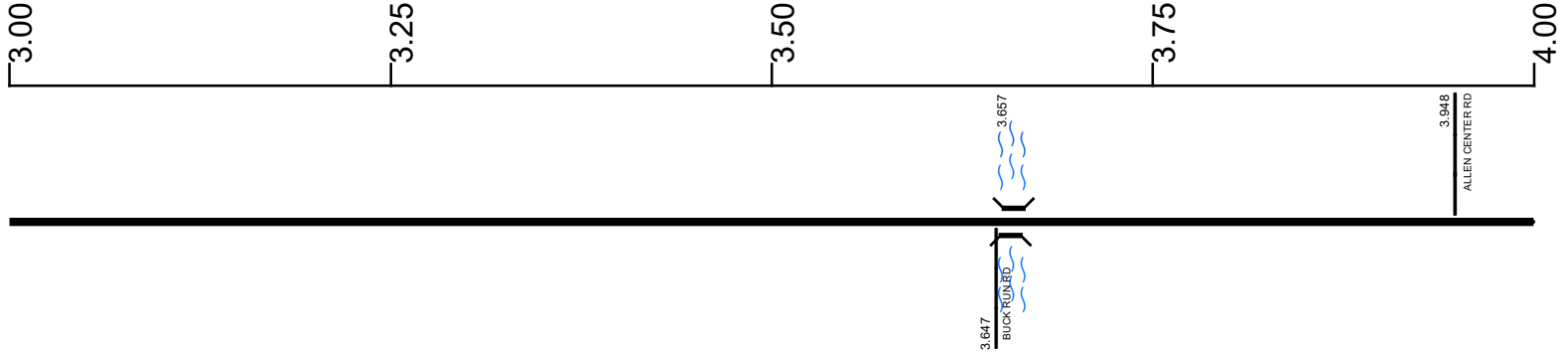
Prepared by
The Ohio Department of Transportation
Office of Technical Services
Roadway Information

SUNISR00245**C

State True Log

32.38

County True Log



Surface Type & Width (Left / Right)

G 22'
0 - 7.331

Base Type (Left / Right)

I
0 - 7.101

Shoulder Type & Width (Left / Right)

5 (1/1')
0 - 7.101

Resurface Year

2024
0 - 7.331

Through Lanes

2
0 - 7.331

Street Name

SR 245
0 - 7.331

- | | | | |
|---------------------|-------------------|----------------------|--------------|
| Non-divided Highway | Bridge (on route) | Railroad (at grade) | Intersection |
| Divided Highway | Underpass | Railroad (underpass) | |
| Secondary Segment | Overpass | Railroad (overpass) | |
| Corporation | | | |

Created on: 7/9/2025

transportation.ohio.gov

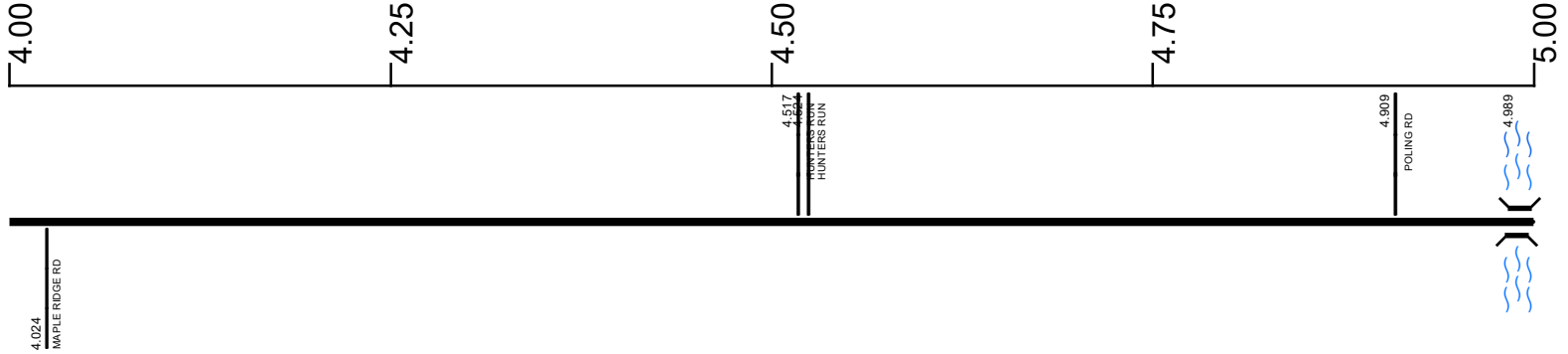
Prepared by
The Ohio Department of Transportation
Office of Technical Services
Roadway Information

SUNISR00245**C

State True Log

33.38

County True Log



Surface Type & Width (Left / Right)	G 22' 0 - 7.331
Base Type (Left / Right)	I 0 - 7.101
Shoulder Type & Width (Left / Right)	5 (1/1') 0 - 7.101
Resurface Year	2024 0 - 7.331
Through Lanes	2 0 - 7.331
Street Name	SR 245 0 - 7.331

- | | | | |
|---------------------|-------------------|----------------------|--------------|
| Non-divided Highway | Bridge (on route) | Railroad (at grade) | Intersection |
| Divided Highway | Underpass | Railroad (underpass) | |
| Secondary Segment | Overpass | Railroad (overpass) | |
| Corporation | | | |

Created on: 7/9/2025

transportation.ohio.gov

Prepared by
The Ohio Department of Transportation
Office of Technical Services
Roadway Information

SUNISR00245**C

State True Log

34.38

County True Log



Surface Type & Width (Left / Right)

G 22'
0 - 7.331

Base Type (Left / Right)

I
0 - 7.101

Shoulder Type & Width (Left / Right)

5 (1/1')
0 - 7.101

Resurface Year

2024
0 - 7.331

Through Lanes

2
0 - 7.331

Street Name

SR 245
0 - 7.331

- | | | | |
|---------------------|-------------------|----------------------|--------------|
| Non-divided Highway | Bridge (on route) | Railroad (at grade) | Intersection |
| Divided Highway | Underpass | Railroad (underpass) | |
| Secondary Segment | Overpass | Railroad (overpass) | |
| Corporation | | | |

Created on: 7/9/2025

transportation.ohio.gov

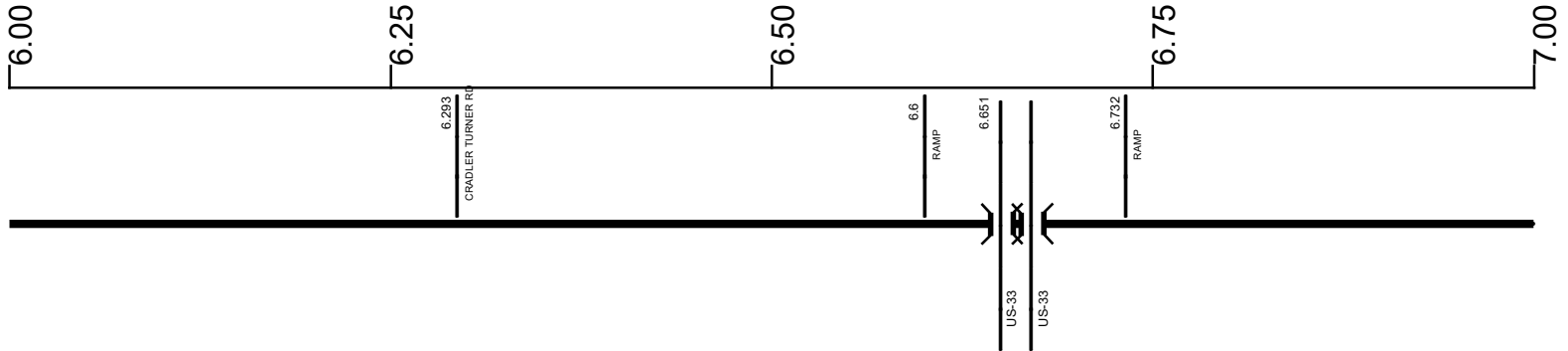
Prepared by
The Ohio Department of Transportation
Office of Technical Services
Roadway Information

SUNISR00245**C

State True Log

35.38

County True Log



Surface Type & Width (Left / Right)

G 22'
0 - 7.331

Base Type (Left / Right)

I
0 - 7.101

Shoulder Type & Width (Left / Right)

5 (1/1')
0 - 7.101

Resurface Year

2024
0 - 7.331

Through Lanes

2
0 - 7.331

Street Name

SR 245
0 - 7.331

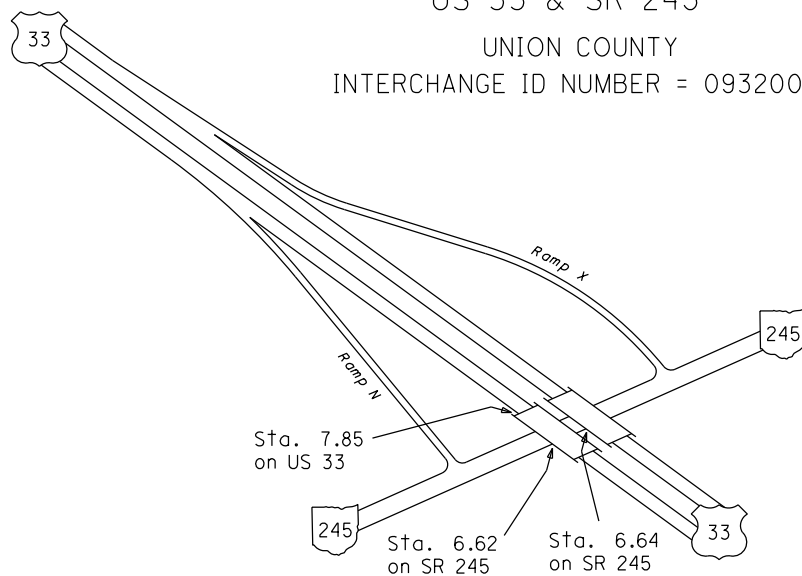
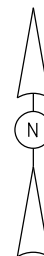
- | | | | |
|---------------------|-------------------|----------------------|--------------|
| Non-divided Highway | Bridge (on route) | Railroad (at grade) | Intersection |
| Divided Highway | Underpass | Railroad (underpass) | |
| Secondary Segment | Overpass | Railroad (overpass) | |
| Corporation | | | |

Created on: 7/9/2025

transportation.ohio.gov

Prepared by
The Ohio Department of Transportation
Office of Technical Services
Roadway Information

INTERCHANGE
US 33 & SR 245
UNION COUNTY
INTERCHANGE ID NUMBER = 093200

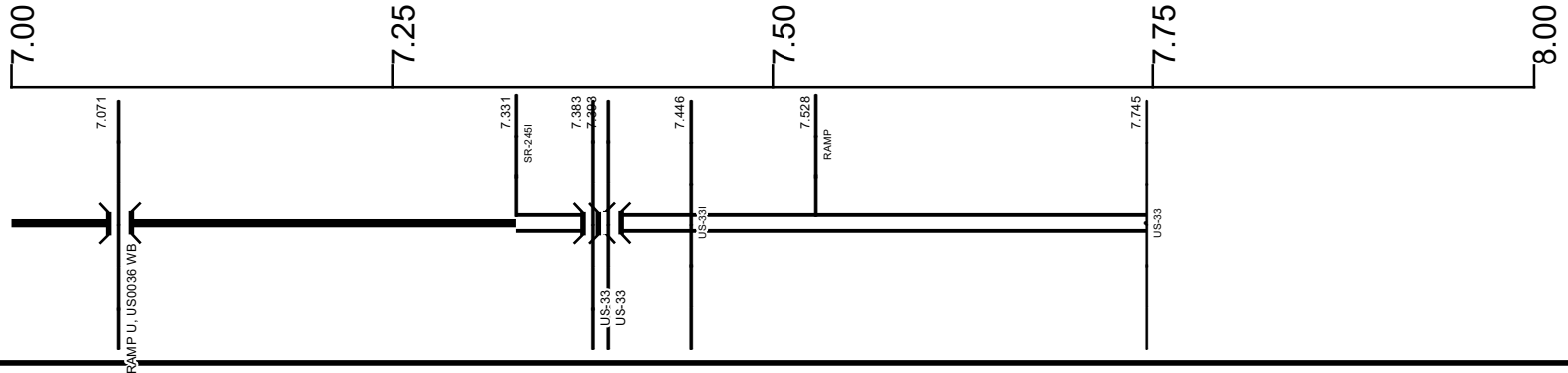


SUNISR00245**C

State True Log

36.125

County True Log



Surface Type & Width (Left / Right)

G 22'	G 60'	G 32'
0 - 7.331	7.331 - 7.455	7.455 - 7.745

Base Type (Left / Right)

I	L	P
0 - 7.101	7.101 - 7.455	7.455 - 7.745

Shoulder Type & Width (Left / Right)

5 (1'1')	5 (3'3')	5 (4'4')	5 (6'6')
0 - 7.101	7.101 - 7.331	7.331 - 7.455	7.455 - 7.745

Median Type and Width

2 (9999')
7.331 - 7.745

Resurface Year

2024	2021
0 - 7.331	7.331 - 7.455

Through Lanes

2	4	2
0 - 7.331	7.331 - 7.455	7.455 - 7.745

Street Name

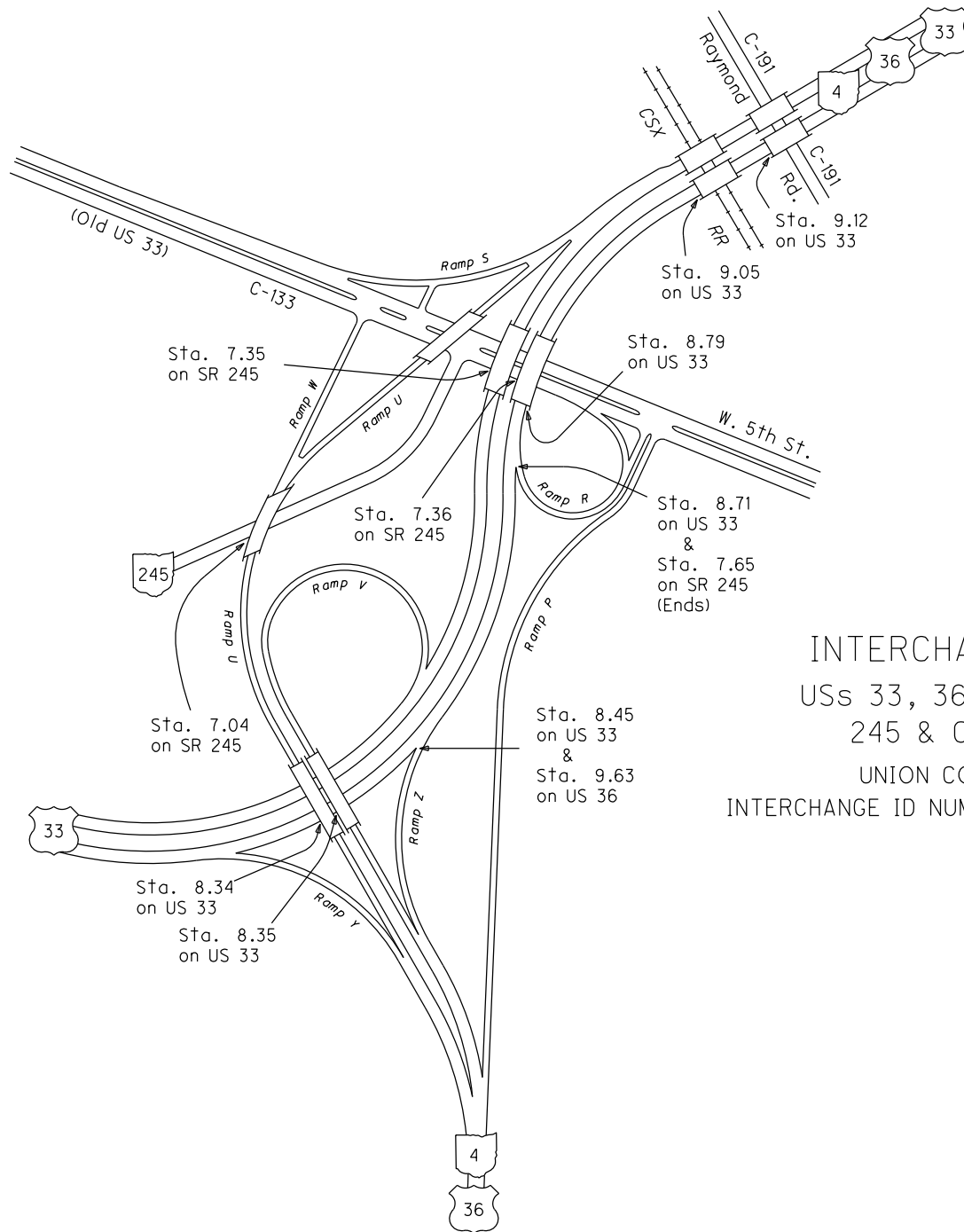
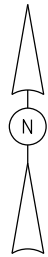
SR 245	NORTHWEST PKWY	SR 245
0 - 7.331	7.331 - 7.446	7.446 - 7.745

<p> Non-divided Highway</p> <p> Divided Highway</p> <p> Secondary Segment</p> <p> Corporation</p>	<p> Bridge (on route)</p> <p> Underpass</p> <p> Overpass</p>	<p> Railroad (at grade)</p> <p> Railroad (underpass)</p> <p> Railroad (overpass)</p>	<p> Intersection</p>
---	--	--	----------------------

Created on: 7/9/2025

transportation.ohio.gov

Prepared by
The Ohio Department of Transportation
Office of Technical Services
Roadway Information



INTERCHANGES
USs 33, 36, SRs 4,
245 & C-133
UNION COUNTY
INTERCHANGE ID NUMBER = 093300

US33 SHEET 2 OF 6
US36 SHEET 2 OF 4
SR245 SHEET 2 OF 2

Revised Jan 2002

Historical Project List for SUNISR00245**C

Begin Measure	End Measure	Project ID Number	Construction Completion Date	Treatment Category	Treatment Type
7.331	7.460	110385	6-2021	Minor Rehabilitation	60-AC Overlay w/Rpr

Roadway Codes

Access Control Journalized

- F - Full Access Control
- L - Limited Access Control
- N - No Access Control

Access Control Operational

- 1 - Full Access Control
- 2 - Partial Access Control
- 3 - No Access Control

Base Type

- F - Crack and Seat
- H - Rubblize and Roll
- I - Aggregate Base 304 or Traffic Compacted
- K - Water Bound Macadam
- L - Bituminous Concrete Mix or Penetration Macadam
- N - Plain Concrete
- P - Reinforced Concrete
- R - Brick (Flexible)
- T - Brick (Rigid)

Direction of Travel

- B - Both (Two-way)
- F - One-way Cardinal
- T - One-way Non-cardinal

Facility Type

- 1 - One-way Roadway
- 2 - Two-way Roadway
- 4 - Ramp
- 5 - Non-mainline
- 6 - Non-inventory Direction
- 7 - Planned / Unbuilt

Historical Federal Aid Indicator

- N - Not a FAP Route
- Y - FAP Route

Functional Classification

- 01 - Interstate
- 02 - Principal Arterial (Freeways)
- 03 - Principal Arterial (Other)
- 04 - Minor Arterial
- 05 - Major Collector
- 06 - Minor Collector
- 07 - Local

Leave / Reenter Indicator

- Y - Route leaves/reenters at this point
- N - Route does not leave/reenter at this point

Median Type

- 1 - None
- 2 - Unprotected
- 3 - Curbed
- 4 - Positive Barrier (Unspecified)
- 5 - Positive Barrier (Flexible)
- 6 - Positive Barrier (Semi-rigid)
- 7 - Positive Barrier (Rigid)

NHS

- N - National Highway System
- H - Congressional Corridor
- 2 - Major Airport
- 3 - Major Port Facility
- 4 - Major Amtrak Station
- 5 - Major Rail / Truck Terminal
- 6 - Major Intercity Bus Terminal
- 7 - Major Public Transit / Multi-modal Passenger Terminal
- 8 - Major Pipeline Terminal
- 9 - Major Ferry Terminal

Priority System

- G - General
- P - Priority System
- U - Urban

Scenic Byway Code

- A - All American Road
- N - National Scenic Byway
- S - State Scenic Byway

Shoulder Type

- 1 - None
- 2 - Surfaced shoulder exists (bituminous concrete {AC})
- 3 - Surfaced shoulder exists (Portland Cement Concrete {PCC})
- 4 - Stabilized shoulder exists (gravel or other granular material)
- 5 - Combination shoulder exists (two or more surface types)
- 6 - Earth shoulder exists
- 7 - Barrier curb exists; no shoulder in front of curb

Surface Type

- A - Combination
- B - Brick
- C - Continuous Reinforced Concrete
- D - Reinforced Concrete
- E - Plain Concrete
- G - Bituminous Concrete
- I - Chipseal on Granular
- K - Open Graded Bituminous
- L - Chipseal or Micro
- M - Gravel
- U - Unimproved
- X - Right of Way Only