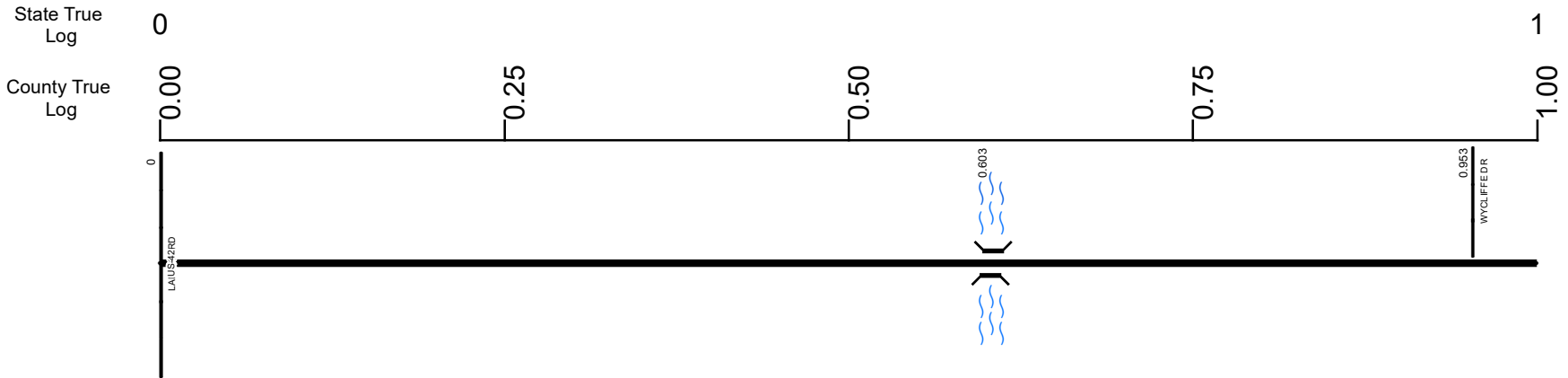


SUNISR00736**C



Surface Type & Width (Left / Right)

	G 18'	G 24'
	0 - 0.962	0.962 - 1.399

Base Type (Left / Right)

	I	L
	0 - 0.962	0.962 - 1.399

Shoulder Type & Width (Left / Right)

	2 (4'/4')	2 (10'/10')
	0 - 0.962	0.962 - 1.399

Through Lanes

	2
	0 - 8.371

Street Name

	SR 736
	0 - 8.371

- Non-divided Highway
- Divided Highway
- Secondary Segment
- Corporation
- Bridge (on route)
- Underpass
- Overpass
- Railroad (at grade)
- Railroad (underpass)
- Railroad (overpass)
- Intersection

Created on: 7/9/2025

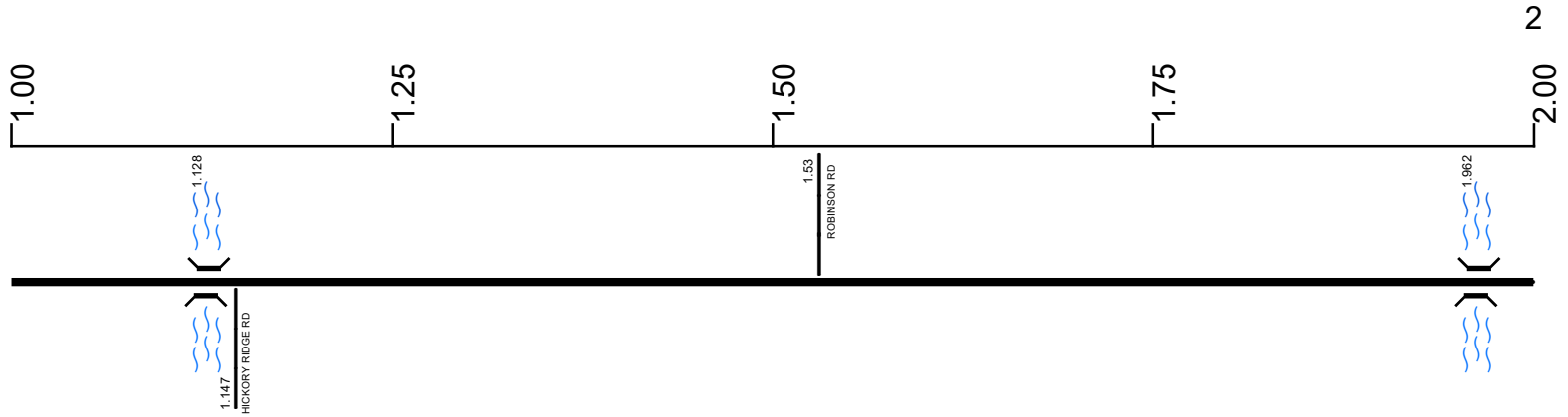
transportation.ohio.gov

Prepared by
 The Ohio Department of Transportation
 Office of Technical Services
 Roadway Information

SUNISR00736**C

State True Log

County True Log



Surface Type & Width (Left / Right)		
G 24'	G 18'	G 22'
0.962 - 1.399	1.399 - 1.771	1.771 - 2.173
Base Type (Left / Right)		
L	I	
0.962 - 1.399	1.399 - 8.371	
Shoulder Type & Width (Left / Right)		
2 (10'/10')	2 (4'/4')	2 (10'/10')
0.962 - 1.399	1.399 - 1.771	1.771 - 2.173
Through Lanes		
2		
0 - 8.371		
Street Name		
SR 736		
0 - 8.371		

- Non-divided Highway
- Divided Highway
- Secondary Segment
- Corporation
- Bridge (on route)
- Underpass
- Overpass
- Railroad (at grade)
- Railroad (underpass)
- Railroad (overpass)
- Intersection

Created on: 7/9/2025

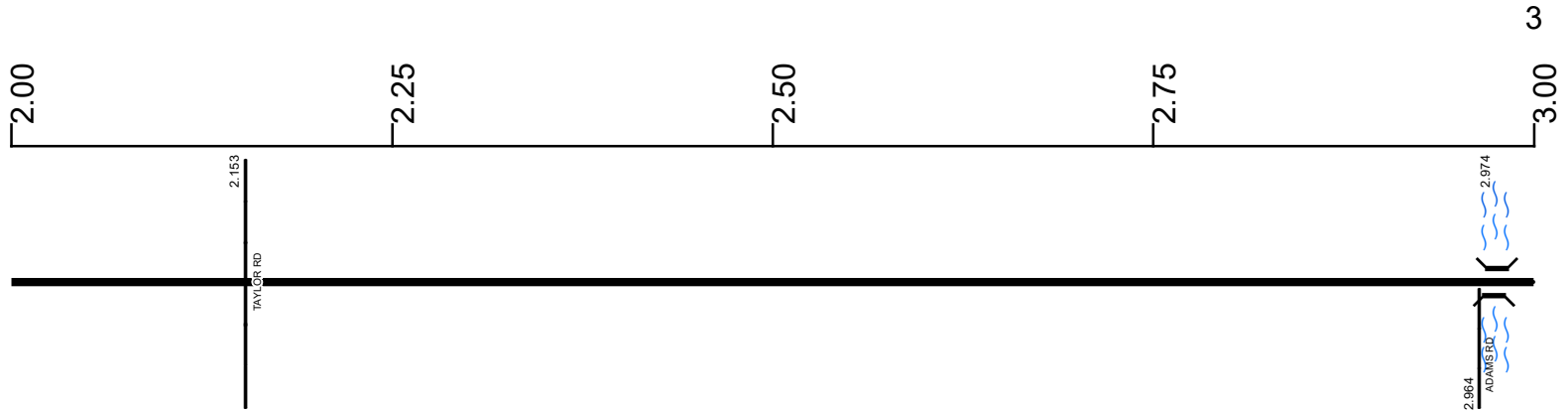
transportation.ohio.gov

Prepared by
The Ohio Department of Transportation
Office of Technical Services
Roadway Information

SUNISR00736**C

State True Log

County True Log



Surface Type & Width (Left / Right)

G 22' 1.771 - 2.173	G 18' 2.173 - 8.371
------------------------	------------------------

Base Type (Left / Right)

I 1.399 - 8.371	
--------------------	--

Shoulder Type & Width (Left / Right)

2 (10'/10') 1.771 - 2.173	2 (4'/4') 2.173 - 8.12
------------------------------	---------------------------

Through Lanes

2 0 - 8.371	
----------------	--

Street Name

	SR 736 0 - 8.371
--	---------------------

- Non-divided Highway
 Bridge (on route)
 Railroad (at grade)
 Intersection
- Divided Highway
 Underpass
 Railroad (underpass)
- Secondary Segment
 Overpass
 Railroad (overpass)
- Corporation**

Created on: 7/9/2025

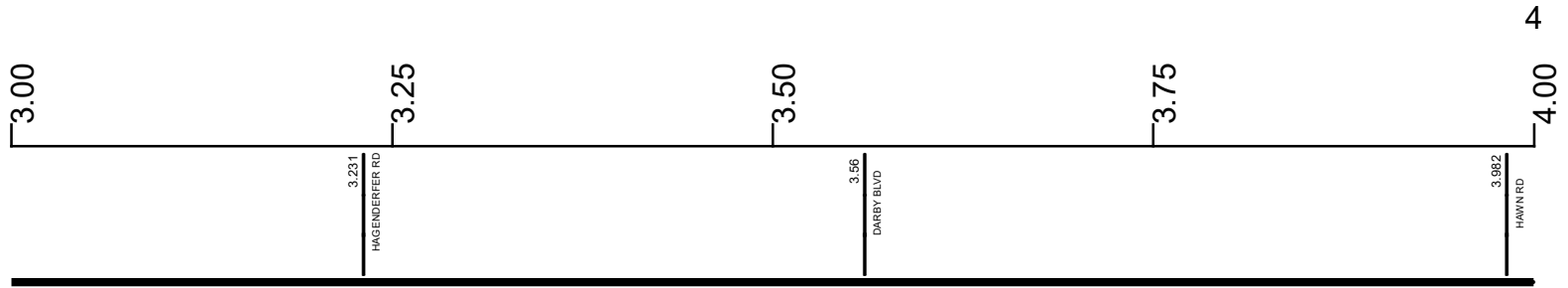
transportation.ohio.gov

Prepared by
The Ohio Department of Transportation
Office of Technical Services
Roadway Information

SUNISR00736**C

State True Log

County True Log



Surface Type & Width (Left / Right)

G 18'
2.173 - 8.371

Base Type (Left / Right)

I
1.399 - 8.371

Shoulder Type & Width (Left / Right)

2 (4/4')
2.173 - 8.12

Through Lanes

2
0 - 8.371

Street Name

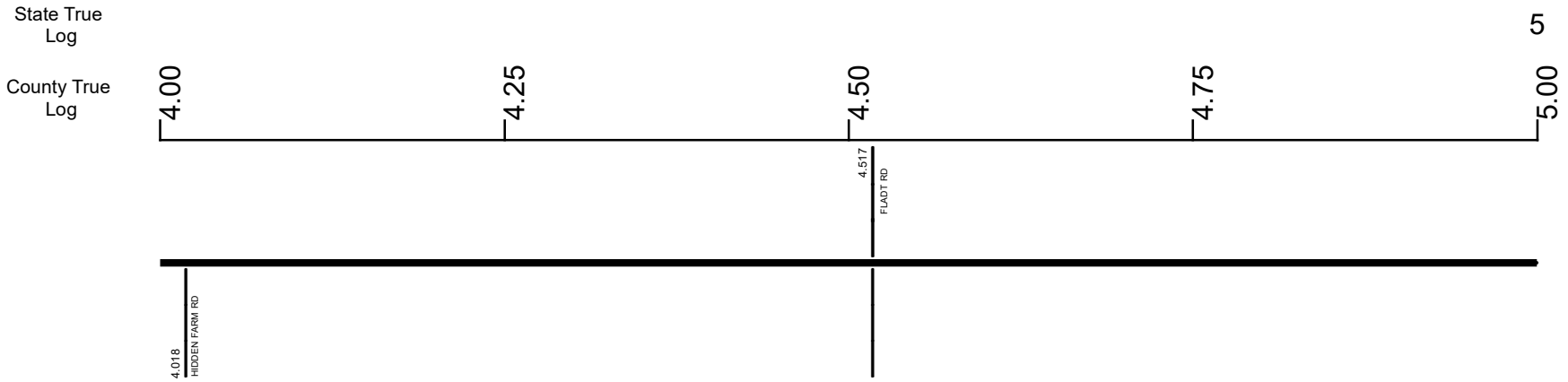
SR 736
0 - 8.371

- Non-divided Highway
- Divided Highway
- Secondary Segment
- Corporation
- Bridge (on route)
- Underpass
- Overpass
- Railroad (at grade)
- Railroad (underpass)
- Railroad (overpass)
- Intersection

Created on: 7/9/2025

transportation.ohio.gov
Prepared by
The Ohio Department of Transportation
Office of Technical Services
Roadway Information

SUNISR00736**C



Surface Type & Width (Left / Right)	G 18' 2.173 - 8.371
Base Type (Left / Right)	I 1.399 - 8.371
Shoulder Type & Width (Left / Right)	2 (4/4') 2.173 - 8.12
Through Lanes	2 0 - 8.371
Street Name	SR 736 0 - 8.371

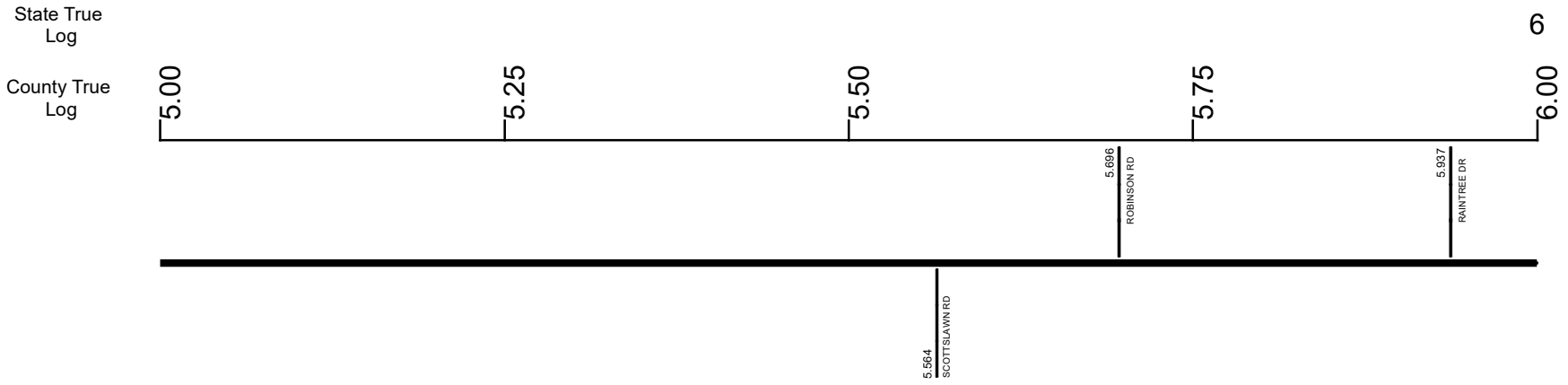
- Non-divided Highway
- Divided Highway
- Secondary Segment
- Corporation
- Bridge (on route)
- Underpass
- Overpass
- Railroad (at grade)
- Railroad (underpass)
- Railroad (overpass)
- Intersection

Created on: 7/9/2025



transportation.ohio.gov
 Prepared by
 The Ohio Department of Transportation
 Office of Technical Services
 Roadway Information

SUNISR00736**C



Surface Type & Width (Left / Right)	G 18'
	2.173 - 8.371
Base Type (Left / Right)	I
	1.399 - 8.371
Shoulder Type & Width (Left / Right)	2 (4/4')
	2.173 - 8.12
Through Lanes	2
	0 - 8.371
Street Name	SR 736
	0 - 8.371

Non-divided Highway	Bridge (on route)	Railroad (at grade)	Intersection
Divided Highway	Underpass	Railroad (underpass)	
Secondary Segment	Overpass	Railroad (overpass)	
Corporation			

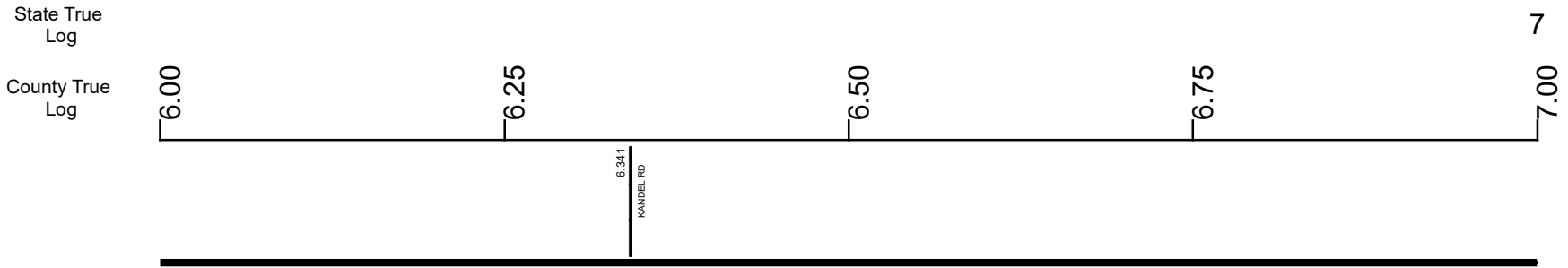
Created on: 7/9/2025



transportation.ohio.gov

Prepared by
The Ohio Department of Transportation
Office of Technical Services
Roadway Information

SUNISR00736**C



Surface Type & Width (Left / Right)

G 18'
2.173 - 8.371

Base Type (Left / Right)

I
1.399 - 8.371

Shoulder Type & Width (Left / Right)

2 (4/4')
2.173 - 8.12

Through Lanes

2
0 - 8.371

Street Name

SR 736
0 - 8.371

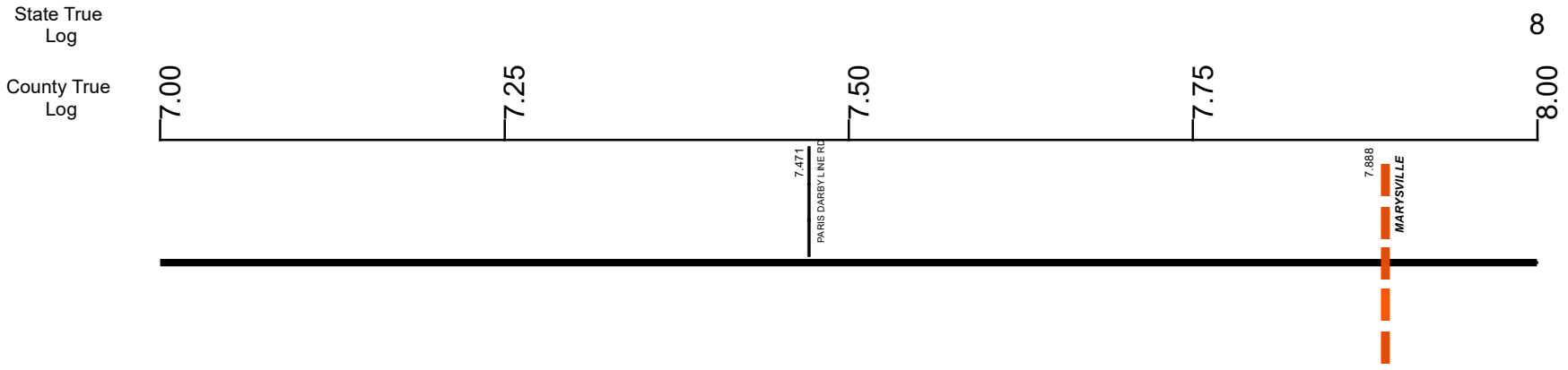
- Non-divided Highway
 Bridge (on route)
 Railroad (at grade)
 Intersection
- Divided Highway
 Underpass
 Railroad (underpass)
- Secondary Segment
 Overpass
 Railroad (overpass)
- Corporation**

Created on: 7/9/2025



transportation.ohio.gov
 Prepared by
 The Ohio Department of Transportation
 Office of Technical Services
 Roadway Information

SUNISR00736**C



Surface Type & Width (Left / Right)	G 18' 2.173 - 8.371
Base Type (Left / Right)	I 1.399 - 8.371
Shoulder Type & Width (Left / Right)	2 (4/4') 2.173 - 8.12
Through Lanes	2 0 - 8.371
Street Name	SR 736 0 - 8.371

<ul style="list-style-type: none"> Non-divided Highway Divided Highway Secondary Segment Corporation 	<ul style="list-style-type: none"> Bridge (on route) Underpass Overpass 	<ul style="list-style-type: none"> Railroad (at grade) Railroad (underpass) Railroad (overpass) 	<ul style="list-style-type: none"> Intersection
---	---	---	---

Created on: 7/9/2025

transportation.ohio.gov

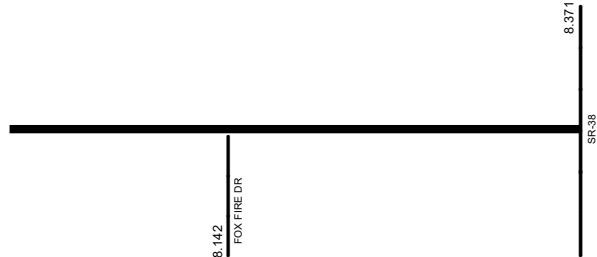
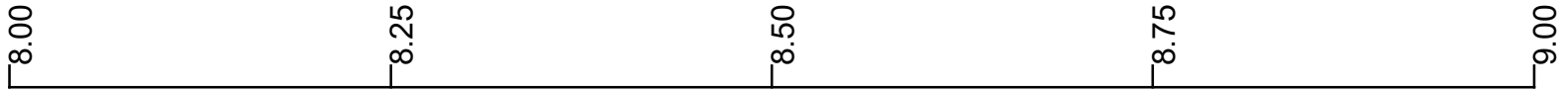
Prepared by
The Ohio Department of Transportation
Office of Technical Services
Roadway Information

SUNISR00736**C

State True Log

8.371

County True Log



Surface Type & Width (Left / Right)

G 18'
2.173 - 8.371

Base Type (Left / Right)

I
1.399 - 8.371

Shoulder Type & Width (Left / Right)

2 (4'4')	2 (6'6')
2.173 - 8.12	8.12 - 8.371

Through Lanes

2
0 - 8.371

Street Name

SR 736
0 - 8.371

- Non-divided Highway
- Divided Highway
- Secondary Segment
- Corporation
- Bridge (on route)
- Underpass
- Overpass
- Railroad (at grade)
- Railroad (underpass)
- Railroad (overpass)
- Intersection

Created on: 7/9/2025

Historical Project List for SUNISR00736**C

Begin Measure	End Measure	Project ID Number	Construction Completion Date	Treatment Category	Treatment Type
0.000	8.371	16987	12-2013	Minor Rehabilitation	60-AC Overlay w/Rpr

Roadway Codes

Access Control Journalized

- F - Full Access Control
- L - Limited Access Control
- N - No Access Control

Access Control Operational

- 1 - Full Access Control
- 2 - Partial Access Control
- 3 - No Access Control

Base Type

- F - Crack and Seat
- H - Rubblize and Roll
- I - Aggregate Base 304 or Traffic Compacted
- K - Water Bound Macadam
- L - Bituminous Concrete Mix or Penetration Macadam
- N - Plain Concrete
- P - Reinforced Concrete
- R - Brick (Flexible)
- T - Brick (Rigid)

Direction of Travel

- B - Both (Two-way)
- F - One-way Cardinal
- T - One-way Non-cardinal

Facility Type

- 1 - One-way Roadway
- 2 - Two-way Roadway
- 4 - Ramp
- 5 - Non-mainline
- 6 - Non-inventory Direction
- 7 - Planned / Unbuilt

Historical Federal Aid Indicator

- N - Not a FAP Route
- Y - FAP Route

Functional Classification

- 01 - Interstate
- 02 - Principal Arterial (Freeways)
- 03 - Principal Arterial (Other)
- 04 - Minor Arterial
- 05 - Major Collector
- 06 - Minor Collector
- 07 - Local

Leave / Reenter Indicator

- Y - Route leaves/reenters at this point
- N - Route does not leave/reenter at this point

Median Type

- 1 - None
- 2 - Unprotected
- 3 - Curbed
- 4 - Positive Barrier (Unspecified)
- 5 - Positive Barrier (Flexible)
- 6 - Positive Barrier (Semi-rigid)
- 7 - Positive Barrier (Rigid)

NHS

- N - National Highway System
- H - Congressional Corridor
- 2 - Major Airport
- 3 - Major Port Facility
- 4 - Major Amtrak Station
- 5 - Major Rail / Truck Terminal
- 6 - Major Intercity Bus Terminal
- 7 - Major Public Transit / Multi-modal Passenger Terminal
- 8 - Major Pipeline Terminal
- 9 - Major Ferry Terminal

Priority System

- G - General
- P - Priority System
- U - Urban

Scenic Byway Code

- A - All American Road
- N - National Scenic Byway
- S - State Scenic Byway

Shoulder Type

- 1 - None
- 2 - Surfaced shoulder exists (bituminous concrete {AC})
- 3 - Surfaced shoulder exists (Portland Cement Concrete {PCC})
- 4 - Stabilized shoulder exists (gravel or other granular material)
- 5 - Combination shoulder exists (two or more surface types)
- 6 - Earth shoulder exists
- 7 - Barrier curb exists; no shoulder in front of curb

Surface Type

- A - Combination
- B - Brick
- C - Continuous Reinforced Concrete
- D - Reinforced Concrete
- E - Plain Concrete
- G - Bituminous Concrete
- I - Chipseal on Granular
- K - Open Graded Bituminous
- L - Chipseal or Micro
- M - Gravel
- U - Unimproved
- X - Right of Way Only