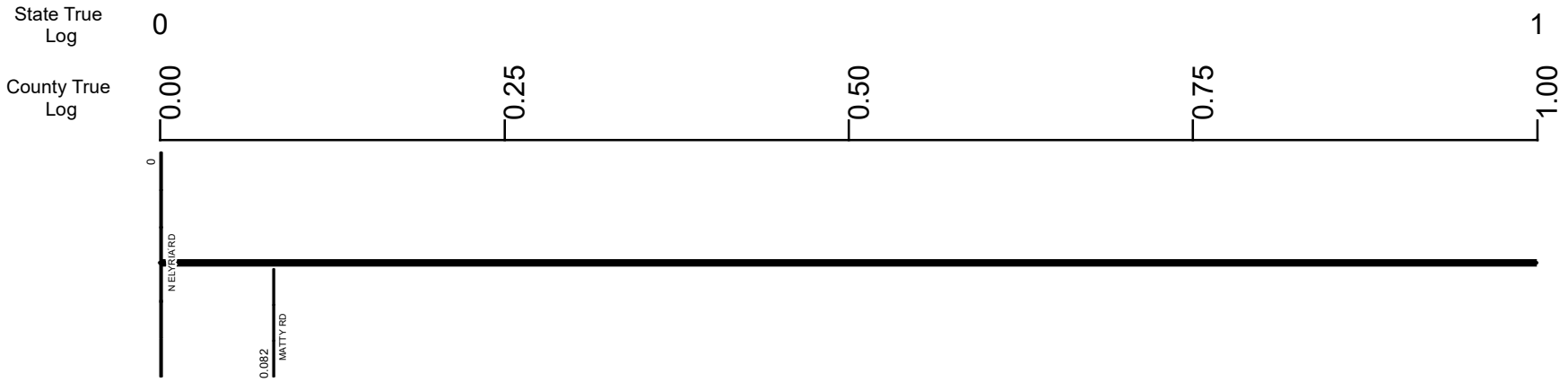


SWAYSR00301**C



Surface Type & Width (Left / Right)	G 20'
	0 - 1.081
Base Type (Left / Right)	I
	0 - 1.081
Shoulder Type & Width (Left / Right)	2 (3/3')
	0 - 1.081
Through Lanes	2
	0 - 6.406
Street Name	SR 301
	0 - 5.567

- Non-divided Highway
- Divided Highway
- Secondary Segment
- Corporation
- Bridge (on route)
- Underpass
- Overpass
- Railroad (at grade)
- Railroad (underpass)
- Railroad (overpass)
- Intersection

Created on: 7/9/2025

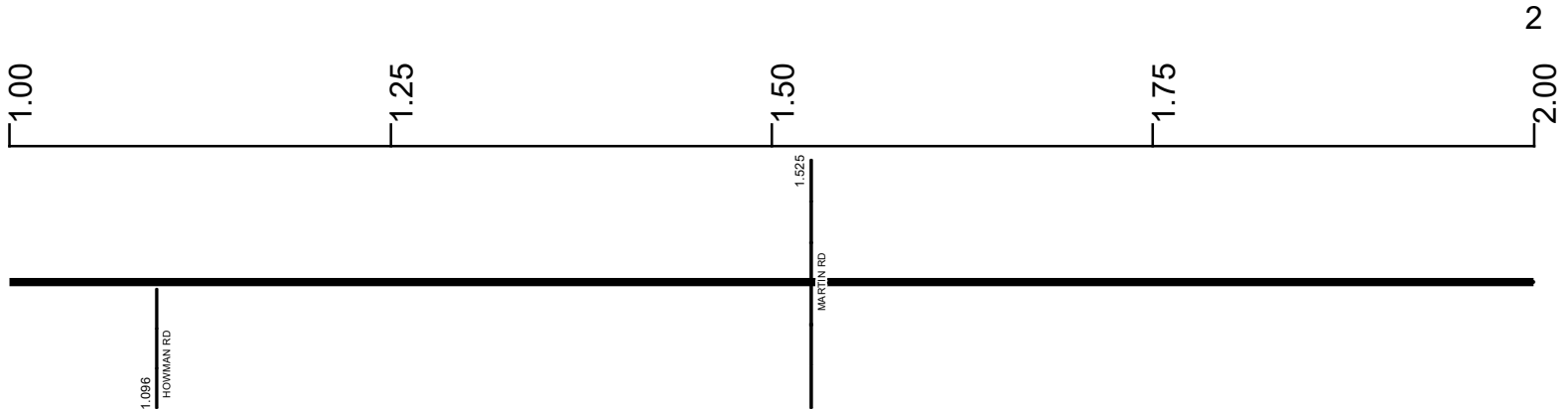


transportation.ohio.gov
 Prepared by
 The Ohio Department of Transportation
 Office of Technical Services
 Roadway Information

SWAYSR00301**C

State True Log

County True Log



Surface Type & Width (Left / Right)

G 20'	G 24'	G 20'
0 - 1.081	1.081 - 1.303	1.303 - 2.022

Base Type (Left / Right)

I	L	I
0 - 1.081	1.081 - 1.303	1.303 - 2.022

Shoulder Type & Width (Left / Right)

2 (3'/3')	2 (6'/6')	2 (3'/3')
0 - 1.081	1.081 - 1.303	1.303 - 2.022

Through Lanes

	2
	0 - 6.406

Street Name

	SR 301
	0 - 5.567

- Non-divided Highway
- Divided Highway
- Secondary Segment
- Corporation
- Bridge (on route)
- Underpass
- Overpass
- Railroad (at grade)
- Railroad (underpass)
- Railroad (overpass)
- Intersection

Created on: 7/9/2025

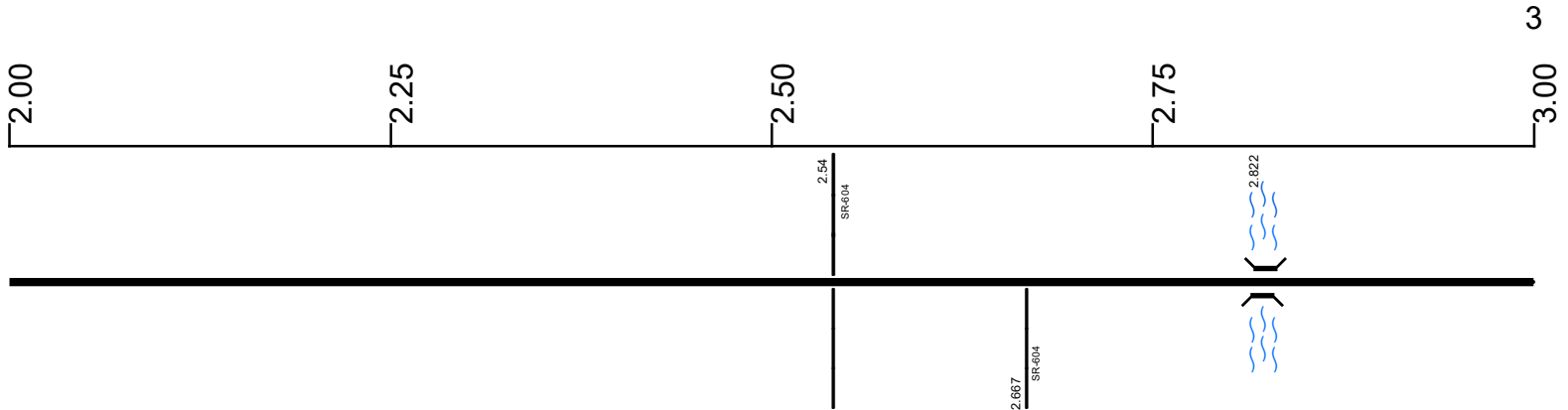
transportation.ohio.gov

Prepared by
The Ohio Department of Transportation
Office of Technical Services
Roadway Information

SWAYSR00301**C

State True Log

County True Log



Surface Type & Width (Left / Right)

G 20'	G 24'	G 20'	G 24'	G 20'
1.303 - 2.022	2.022 - 2.181	2.181 - 2.758	2.758 - 2.912	2.912 - 6.2

Base Type (Left / Right)

I	L	I	
1.303 - 2.022	2.022 - 2.181	2.181 - 6.071	

Shoulder Type & Width (Left / Right)

2 (3/3')	2 (6/6')	2 (3/3')	2 (4/4')	2 (3/3')
1.303 - 2.022	2.022 - 2.181	2.181 - 2.758	2.758 - 2.912	2.912 - 3.884

Through Lanes

	2	
0 - 6.406		

Street Name

	SR 301	
0 - 5.567		

- Non-divided Highway
- Divided Highway
- Secondary Segment
- Corporation
- Bridge (on route)
- Underpass
- Overpass
- Railroad (at grade)
- Railroad (underpass)
- Railroad (overpass)
- Intersection

Created on: 7/9/2025

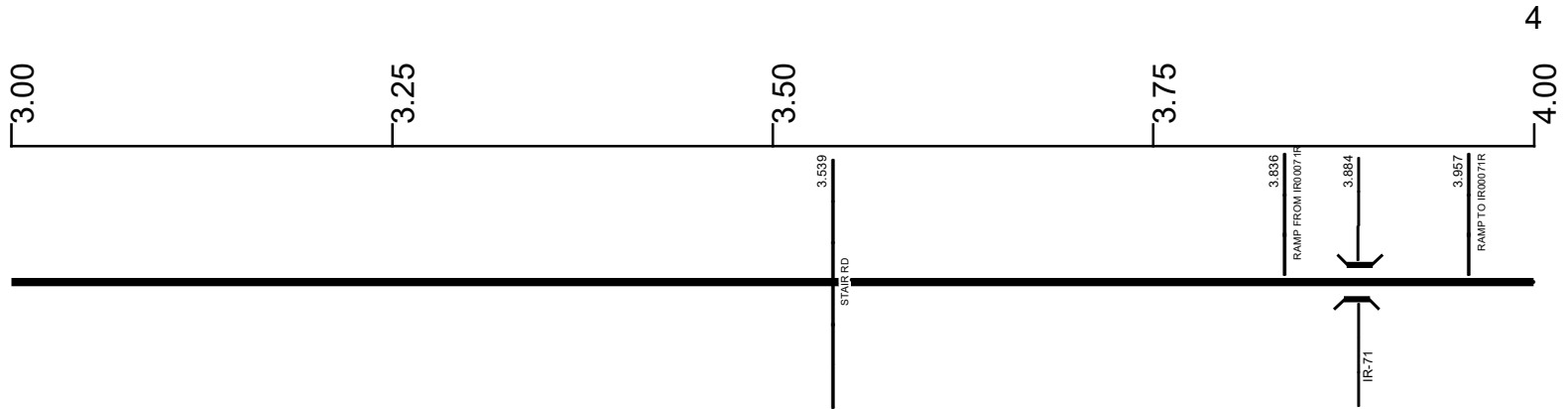
transportation.ohio.gov

Prepared by
The Ohio Department of Transportation
Office of Technical Services
Roadway Information

SWAYSR00301**C

State True Log

County True Log



Surface Type & Width (Left / Right)

	G 20'
	2.912 - 6.2

Base Type (Left / Right)

	I
	2.181 - 6.071

Shoulder Type & Width (Left / Right)

	2 (3'/3')		2 (10'/10')
	2.912 - 3.884		3.884 - 6.2

Through Lanes

	2
	0 - 6.406

Street Name

	SR 301
	0 - 5.567

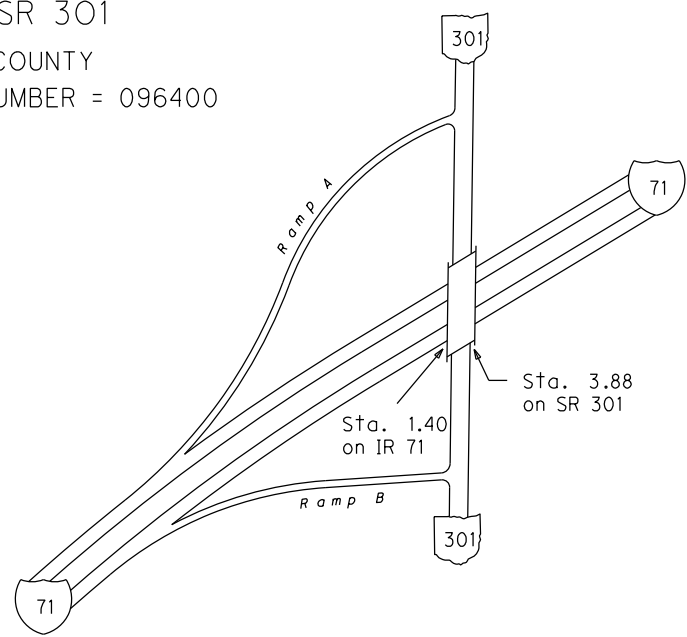
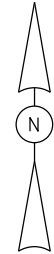
- | | | | |
|--|---|---|---|
| <ul style="list-style-type: none"> Non-divided Highway Divided Highway Secondary Segment Corporation | <ul style="list-style-type: none"> Bridge (on route) Underpass Overpass | <ul style="list-style-type: none"> Railroad (at grade) Railroad (underpass) Railroad (overpass) | <ul style="list-style-type: none"> Intersection |
|--|---|---|---|

Created on: 7/9/2025

transportation.ohio.gov

Prepared by
The Ohio Department of Transportation
Office of Technical Services
Roadway Information

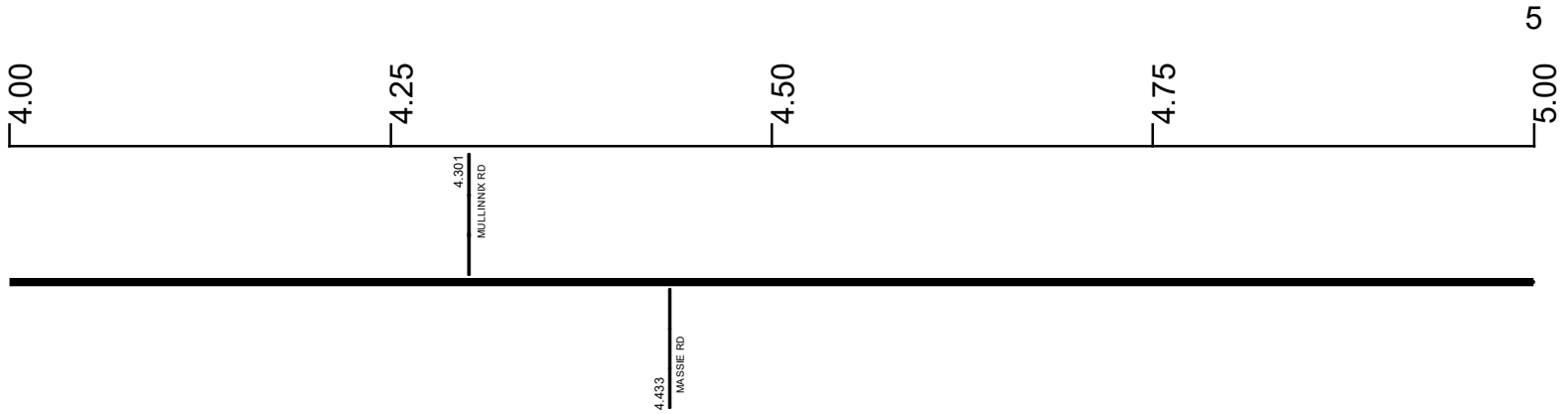
INTERCHANGE
IR 71 & SR 301
WAYNE COUNTY
INTERCHANGE ID NUMBER = 096400



SWAYSR00301**C

State True Log

County True Log



Surface Type & Width (Left / Right)	G 20' 2.912 - 6.2
Base Type (Left / Right)	I 2.181 - 6.071
Shoulder Type & Width (Left / Right)	2 (10'/10') 3.884 - 6.2
Through Lanes	2 0 - 6.406
Street Name	SR 301 0 - 5.567

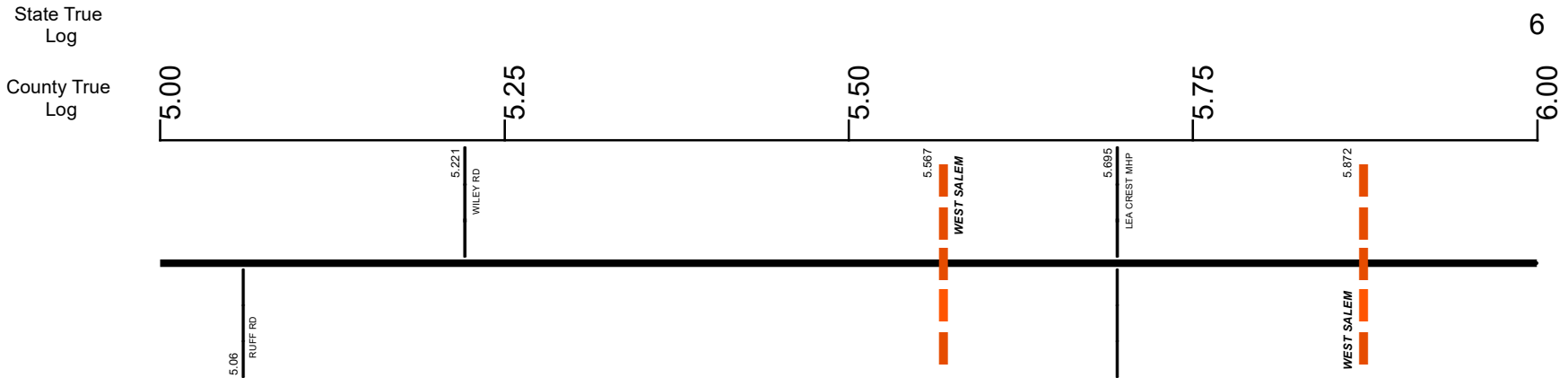
Non-divided Highway	Bridge (on route)	Railroad (at grade)	Intersection
Divided Highway	Underpass	Railroad (underpass)	
Secondary Segment	Overpass	Railroad (overpass)	
Corporation			

Created on: 7/9/2025

transportation.ohio.gov

Prepared by
The Ohio Department of Transportation
Office of Technical Services
Roadway Information

SWAYSR00301**C



Surface Type & Width (Left / Right)	G 20' 2.912 - 6.2	
Base Type (Left / Right)	I 2.181 - 6.071	
Shoulder Type & Width (Left / Right)	2 (10'/10') 3.884 - 6.2	
Through Lanes	2 0 - 6.406	
Street Name	SR 301 0 - 5.567	ELYRIA RD 5.567 - 6.071

Non-divided Highway	Bridge (on route)	Railroad (at grade)	Intersection
Divided Highway	Underpass	Railroad (underpass)	
Secondary Segment	Overpass	Railroad (overpass)	
Corporation			

Created on: 7/9/2025

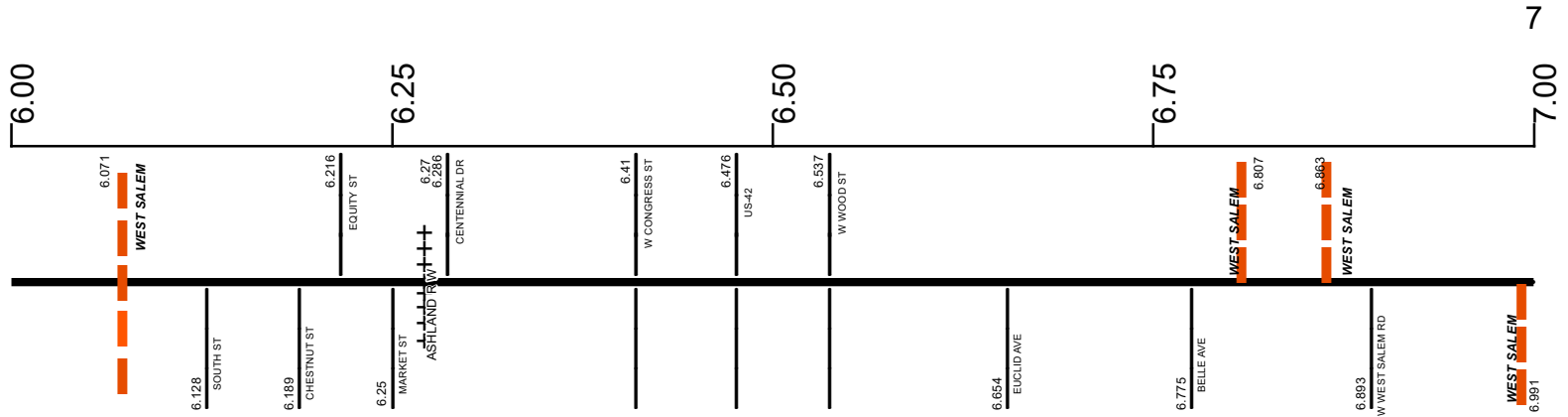


transportation.ohio.gov
Prepared by
The Ohio Department of Transportation
Office of Technical Services
Roadway Information

SWAYSR00301**C

State True Log

County True Log



Surface Type & Width (Left / Right)

G 20'	G 26'	G 42'	G 26'	G 20'
2.912 - 6.2	6.2 - 6.406	6.406 - 6.545	6.545 - 6.807	6.807 - 7.791

Base Type (Left / Right)

I	K	I	T	N / I
2.181 - 6.071	6.071 - 6.2	6.2 - 6.28	6.28 - 6.807	6.807 - 7.791

Shoulder Type & Width (Left / Right)

2 (10'/10')	1 (0'/0')	2 (3'/3')
3.884 - 6.2	6.2 - 6.807	6.807 - 7.791

Through Lanes

2	4	2
0 - 6.406	6.406 - 6.545	6.545 - 7.791

Street Name

ELYRIA RD	MAIN ST	ELYRIA RD
5.567 - 6.071	6.071 - 6.807	6.807 - 7.011

- Non-divided Highway
- Divided Highway
- Secondary Segment
- Corporation
- Bridge (on route)
- Underpass
- Overpass
- Railroad (at grade)
- Railroad (underpass)
- Railroad (overpass)
- Intersection

Created on: 7/9/2025

transportation.ohio.gov

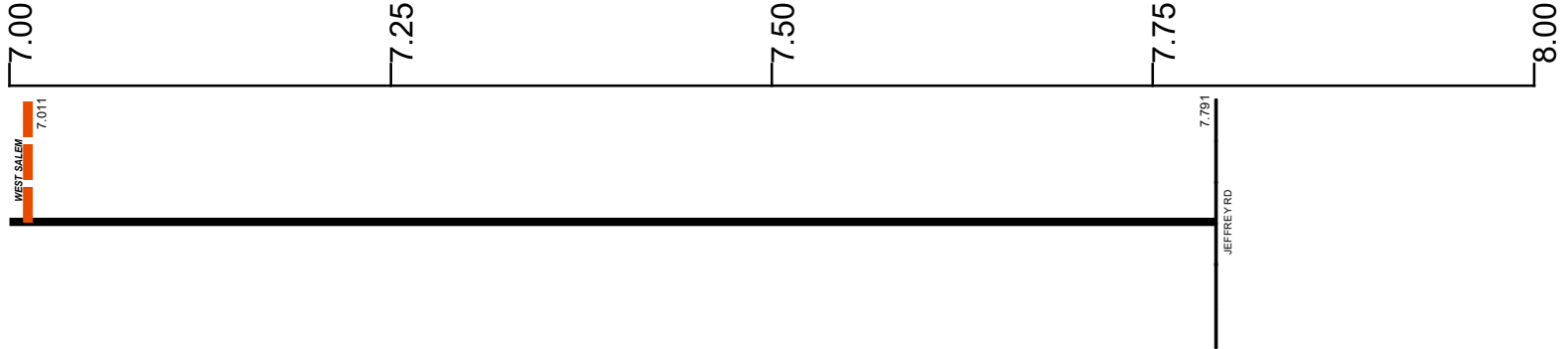
Prepared by
The Ohio Department of Transportation
Office of Technical Services
Roadway Information

SWAYSR00301**C

State True Log

7.791

County True Log



Surface Type & Width (Left / Right)

G 20'
6.807 - 7.791

Base Type (Left / Right)

N / I
6.807 - 7.791

Shoulder Type & Width (Left / Right)

2 (3/3)
6.807 - 7.791

Through Lanes

2
6.545 - 7.791

Street Name

ELYRIARD	SR 301	
6.807 - 7.011	7.011 - 7.791	

- | | | | |
|---------------------|-------------------|----------------------|--------------|
| Non-divided Highway | Bridge (on route) | Railroad (at grade) | Intersection |
| Divided Highway | Underpass | Railroad (underpass) | |
| Secondary Segment | Overpass | Railroad (overpass) | |
| Corporation | | | |

Created on: 7/9/2025

transportation.ohio.gov

Prepared by
The Ohio Department of Transportation
Office of Technical Services
Roadway Information

Historical Project List for SWAYSR00301**C

Begin Measure	End Measure	Project ID Number	Construction Completion Date	Treatment Category	Treatment Type
0.000	3.838	93099	9-2014	Minor Rehabilitation	60-AC Overlay w/Rpr
0.000	3.798	80174	8-2010	Preventive Maintenance	25-Chip Seal
3.798	7.791	80174	8-2010	Minor Rehabilitation	60-AC Overlay w/Rpr
3.838	6.080	98501	10-2018	Minor Rehabilitation	50-AC Overlay w/o Rpr
6.080	7.791	98501	10-2018	Minor Rehabilitation	60-AC Overlay w/Rpr

Roadway Codes

Access Control Journalized

- F - Full Access Control
- L - Limited Access Control
- N - No Access Control

Access Control Operational

- 1 - Full Access Control
- 2 - Partial Access Control
- 3 - No Access Control

Base Type

- F - Crack and Seat
- H - Rubblize and Roll
- I - Aggregate Base 304 or Traffic Compacted
- K - Water Bound Macadam
- L - Bituminous Concrete Mix or Penetration Macadam
- N - Plain Concrete
- P - Reinforced Concrete
- R - Brick (Flexible)
- T - Brick (Rigid)

Direction of Travel

- B - Both (Two-way)
- F - One-way Cardinal
- T - One-way Non-cardinal

Facility Type

- 1 - One-way Roadway
- 2 - Two-way Roadway
- 4 - Ramp
- 5 - Non-mainline
- 6 - Non-inventory Direction
- 7 - Planned / Unbuilt

Historical Federal Aid Indicator

- N - Not a FAP Route
- Y - FAP Route

Functional Classification

- 01 - Interstate
- 02 - Principal Arterial (Freeways)
- 03 - Principal Arterial (Other)
- 04 - Minor Arterial
- 05 - Major Collector
- 06 - Minor Collector
- 07 - Local

Leave / Reenter Indicator

- Y - Route leaves/reenters at this point
- N - Route does not leave/reenter at this point

Median Type

- 1 - None
- 2 - Unprotected
- 3 - Curbed
- 4 - Positive Barrier (Unspecified)
- 5 - Positive Barrier (Flexible)
- 6 - Positive Barrier (Semi-rigid)
- 7 - Positive Barrier (Rigid)

NHS

- N - National Highway System
- H - Congressional Corridor
- 2 - Major Airport
- 3 - Major Port Facility
- 4 - Major Amtrak Station
- 5 - Major Rail / Truck Terminal
- 6 - Major Intercity Bus Terminal
- 7 - Major Public Transit / Multi-modal Passenger Terminal
- 8 - Major Pipeline Terminal
- 9 - Major Ferry Terminal

Priority System

- G - General
- P - Priority System
- U - Urban

Scenic Byway Code

- A - All American Road
- N - National Scenic Byway
- S - State Scenic Byway

Shoulder Type

- 1 - None
- 2 - Surfaced shoulder exists (bituminous concrete {AC})
- 3 - Surfaced shoulder exists (Portland Cement Concrete {PCC})
- 4 - Stabilized shoulder exists (gravel or other granular material)
- 5 - Combination shoulder exists (two or more surface types)
- 6 - Earth shoulder exists
- 7 - Barrier curb exists; no shoulder in front of curb

Surface Type

- A - Combination
- B - Brick
- C - Continuous Reinforced Concrete
- D - Reinforced Concrete
- E - Plain Concrete
- G - Bituminous Concrete
- I - Chipseal on Granular
- K - Open Graded Bituminous
- L - Chipseal or Micro
- M - Gravel
- U - Unimproved
- X - Right of Way Only