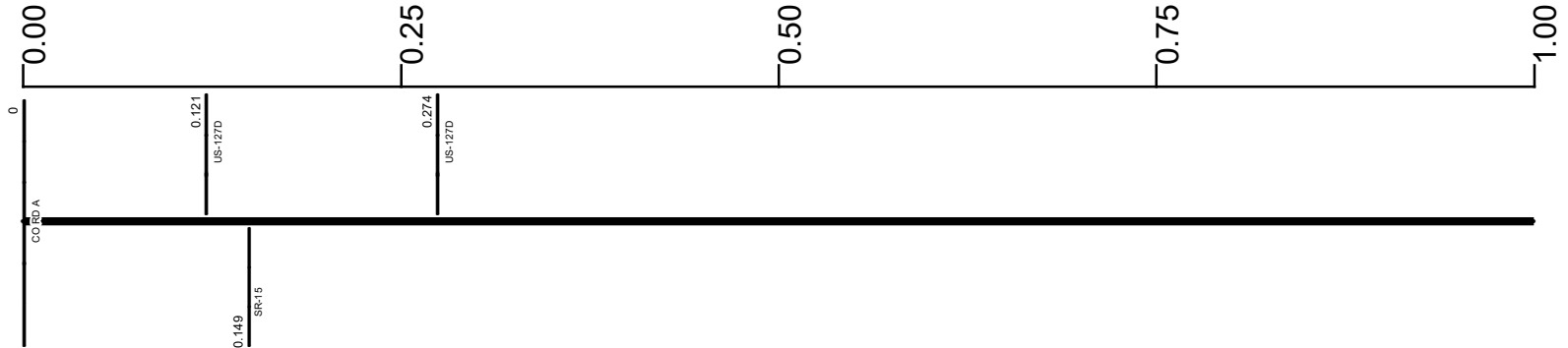


SWILUS00127**C

State True Log 169.09

170.09

County True Log



Surface Type & Width (Left / Right)

G 24' 0 - 0.284	G (28'/22') 0.284 - 1.598
--------------------	------------------------------

Base Type (Left / Right)

N 0 - 0.284	L / K 0.284 - 1.598
----------------	------------------------

Shoulder Type & Width (Left / Right)

2 (3'/3') 0 - 0.284	2 (9'/9') 0.284 - 1.598
------------------------	----------------------------

Through Lanes

2 0 - 0.284	4 0.284 - 4.089
----------------	--------------------

Street Name

	US 127 0 - 2.004
--	---------------------

- | | | | |
|---------------------|-------------------|----------------------|--------------|
| Non-divided Highway | Bridge (on route) | Railroad (at grade) | Intersection |
| Divided Highway | Underpass | Railroad (underpass) | |
| Secondary Segment | Overpass | Railroad (overpass) | |
| Corporation | | | |

Created on: 6/23/2025

transportation.ohio.gov

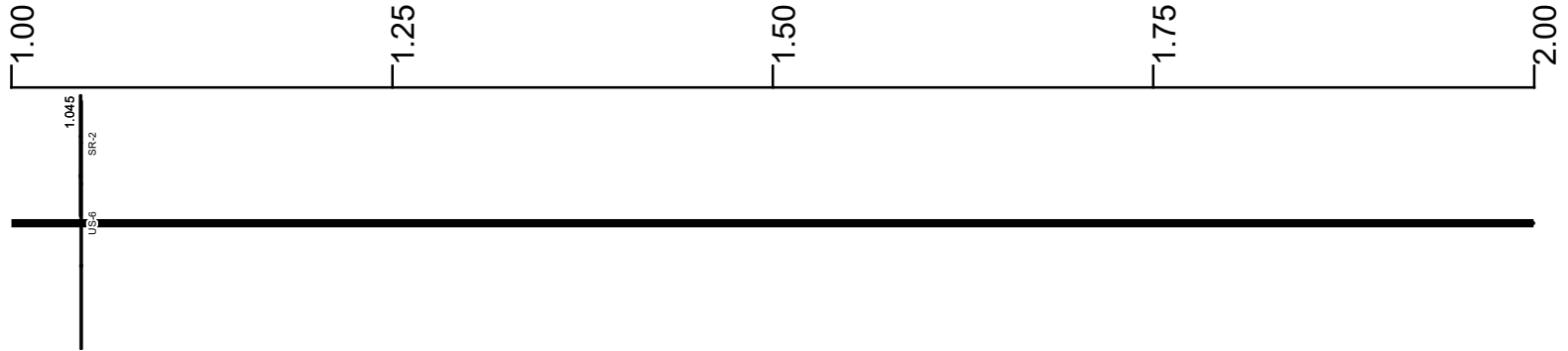
Prepared by
The Ohio Department of Transportation
Office of Technical Services
Roadway Information

SWILUS00127**C

State True Log

171.09

County True Log



Surface Type & Width (Left / Right)

G (28'/22')	G 48'	G (28'/20')
0.284 - 1.598	1.598 - 1.678	1.678 - 2.037

Base Type (Left / Right)

L / K	L	L / K
0.284 - 1.598	1.598 - 1.678	1.678 - 2.261

Shoulder Type & Width (Left / Right)

2 (9'/9')	2 (10'/10')
0.284 - 1.598	1.598 - 2.037

Through Lanes

	4
	0.284 - 4.089

Street Name

	US 127
	0 - 2.004

- Non-divided Highway
 Bridge (on route)
 Railroad (at grade)
 Intersection
- Divided Highway
 Underpass
 Railroad (underpass)
- Secondary Segment
 Overpass
 Railroad (overpass)
- Corporation**

Created on: 6/23/2025

transportation.ohio.gov

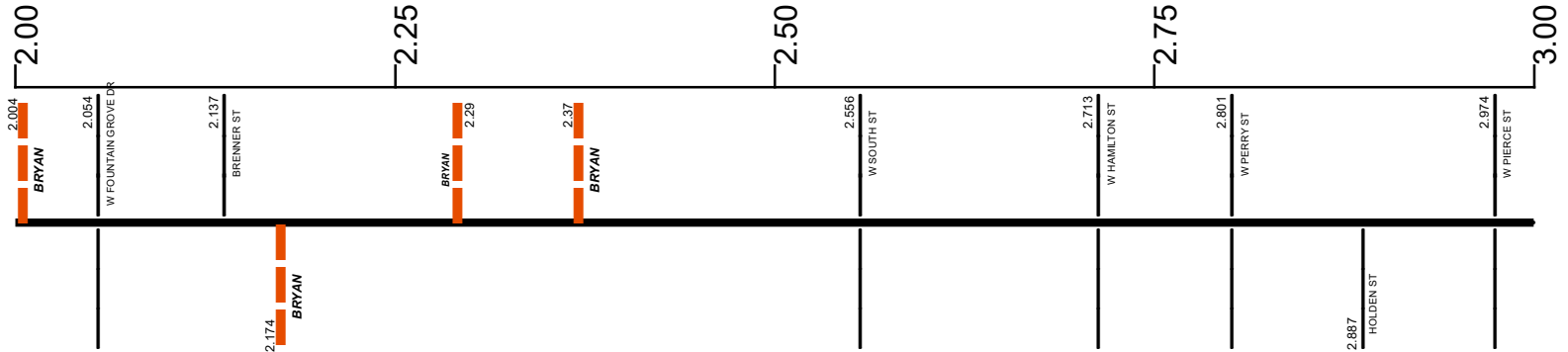
Prepared by
The Ohio Department of Transportation
Office of Technical Services
Roadway Information

SWILUS00127**C

State True Log

172.09

County True Log



Surface Type & Width (Left / Right)

G (28'/20')	G (34'/20')	G 60'	G (30'/24')	G (24'/30')
1.678 - 2.037	2.037 - 2.261	2.261 - 2.585	2.585 - 2.974	2.974 - 3.061

Base Type (Left / Right)

L / K	L	L / T
1.678 - 2.261	2.261 - 2.585	2.585 - 3.061

Shoulder Type & Width (Left / Right)

2 (10'/10')	1 (0'/0')
1.598 - 2.037	2.037 - 4.089

Through Lanes

	4
	0.284 - 4.089

Street Name

US 127	S MAIN ST
0 - 2.004	2.004 - 3.315

- Non-divided Highway
- Divided Highway
- Secondary Segment
- Corporation
- Bridge (on route)
- Underpass
- Overpass
- Railroad (at grade)
- Railroad (underpass)
- Railroad (overpass)
- Intersection

Created on: 6/23/2025

transportation.ohio.gov

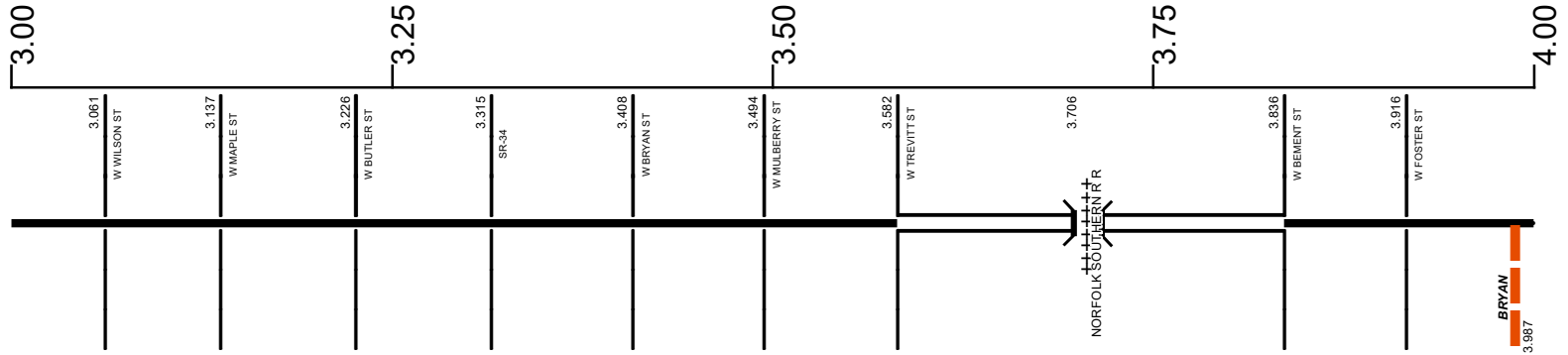
Prepared by
The Ohio Department of Transportation
Office of Technical Services
Roadway Information

SWILUS00127**C

State True Log

173.09

County True Log



Surface Type & Width (Left / Right)

G (24'/30')	G (36'/32')	G (60'/8')	G 54'	G 56'	G 54'	E 54'
2.974 - 3.061	3.061 - 3.315	3.315 - 3.582	3.582 - 3.836	3.836 - 3.916		3.94 - 4.089

Base Type (Left / Right)

L / T	T / L	P	L
2.585 - 3.061	3.061 - 3.582	3.582 - 3.916	3.916 - 3.94

Shoulder Type & Width (Left / Right)

	1 (0'/0')
	2.037 - 4.089

Median Type and Width

3 (4')
3.582 - 3.836

Through Lanes

	4
	0.284 - 4.089

Street Name

S MAIN ST 2.004 - 3.315	N MAIN ST 3.315 - 4.089
----------------------------	----------------------------

- Non-divided Highway
- Divided Highway
- Secondary Segment
- Corporation
- Bridge (on route)
- Underpass
- Overpass
- Railroad (at grade)
- Railroad (underpass)
- Railroad (overpass)
- Intersection

Created on: 6/23/2025

transportation.ohio.gov

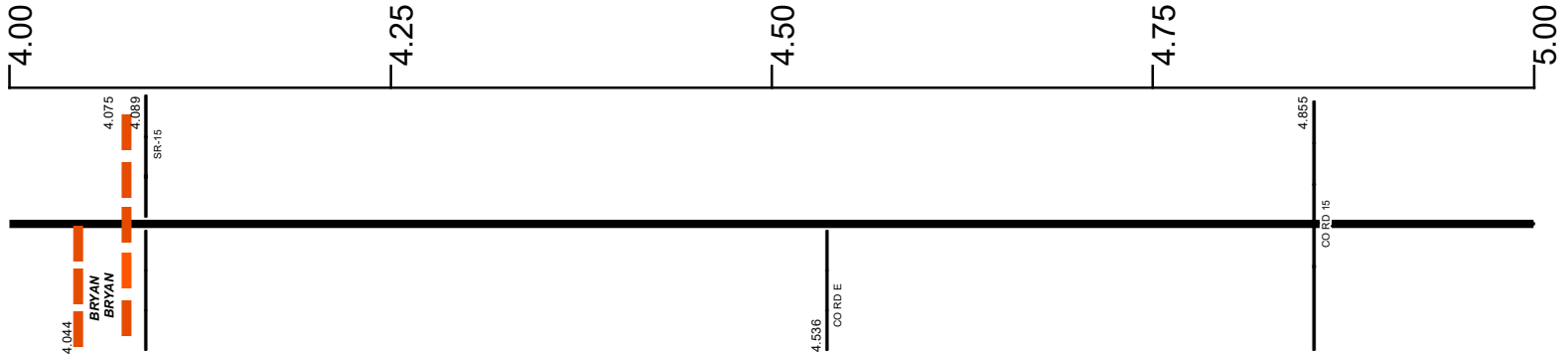
Prepared by
The Ohio Department of Transportation
Office of Technical Services
Roadway Information

SWILUS00127**C

State True Log

174.09

County True Log



Surface Type & Width (Left / Right)

E 54'	G 24'
3.94 - 4.089	4.089 - 7.047

Base Type (Left / Right)

P	P
4.089 - 5.539	4.089 - 5.539

Shoulder Type & Width (Left / Right)

1 (0'0")	2 (6'6")
2.037 - 4.089	4.089 - 5.539

Through Lanes

4	2
0.284 - 4.089	4.089 - 14.341

Street Name

N MAIN ST	US 127
3.315 - 4.089	4.089 - 7.35

- | | | | |
|--|---|---|---|
| <ul style="list-style-type: none"> Non-divided Highway Divided Highway Secondary Segment Corporation | <ul style="list-style-type: none"> Bridge (on route) Underpass Overpass | <ul style="list-style-type: none"> Railroad (at grade) Railroad (underpass) Railroad (overpass) | <ul style="list-style-type: none"> Intersection |
|--|---|---|---|

Created on: 6/23/2025

transportation.ohio.gov

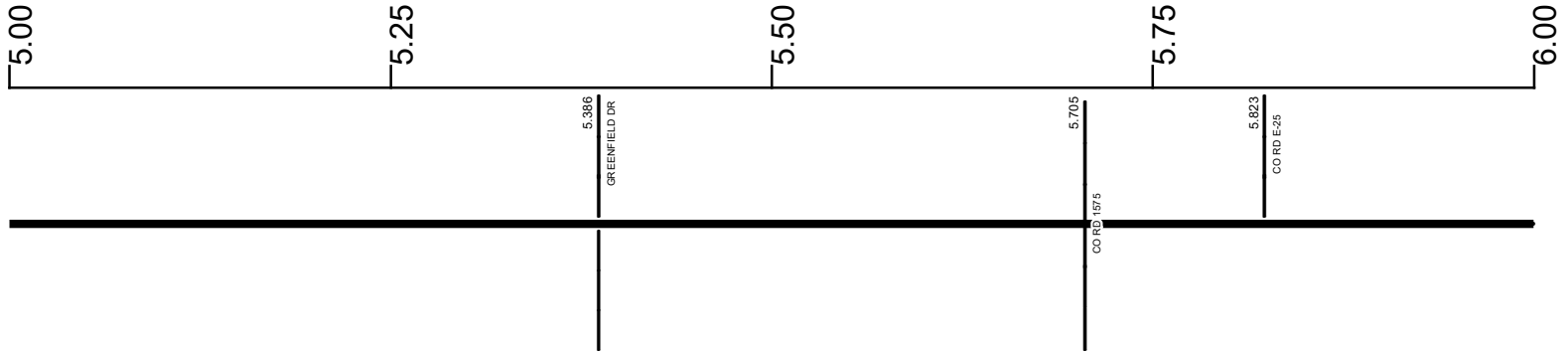
Prepared by
The Ohio Department of Transportation
Office of Technical Services
Roadway Information

SWILUS00127**C

State True Log

175.09

County True Log



Surface Type & Width (Left / Right)

G 24'	
4.089 - 7.047	

Base Type (Left / Right)

P	L	N
4.089 - 5.539	5.539 - 5.705	5.705 - 14.341

Shoulder Type & Width (Left / Right)

2 (6/6')	5 (3/3')	2 (3/3')
4.089 - 5.539	5.539 - 5.705	5.705 - 14.341

Through Lanes

2	
4.089 - 14.341	

Street Name

US 127	
4.089 - 7.35	

- Non-divided Highway
- Divided Highway
- Secondary Segment
- Corporation
- Bridge (on route)
- Underpass
- Overpass
- Railroad (at grade)
- Railroad (underpass)
- Railroad (overpass)
- Intersection

Created on: 6/23/2025

transportation.ohio.gov

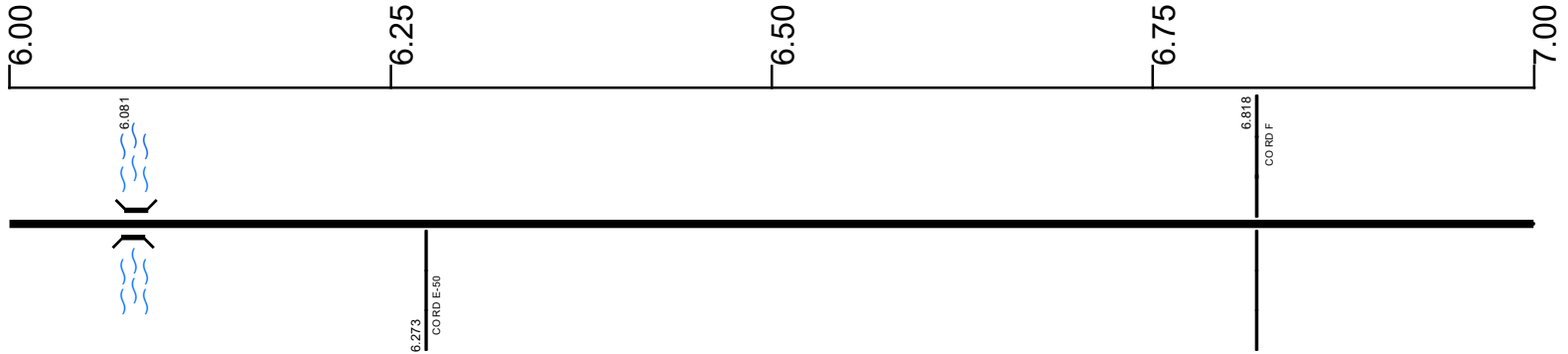
Prepared by
The Ohio Department of Transportation
Office of Technical Services
Roadway Information

SWILUS00127**C

State True Log

176.09

County True Log



Surface Type & Width (Left / Right)

	G 24'
	4.089 - 7.047

Base Type (Left / Right)

	N
	5.705 - 14.341

Shoulder Type & Width (Left / Right)

	2 (3/3')
	5.705 - 14.341

Through Lanes

	2
	4.089 - 14.341

Street Name

	US 127
	4.089 - 7.35

- | | | | |
|--|---|---|---|
| <ul style="list-style-type: none"> Non-divided Highway Divided Highway Secondary Segment Corporation | <ul style="list-style-type: none"> Bridge (on route) Underpass Overpass | <ul style="list-style-type: none"> Railroad (at grade) Railroad (underpass) Railroad (overpass) | <ul style="list-style-type: none"> Intersection |
|--|---|---|---|

Created on: 6/23/2025

transportation.ohio.gov

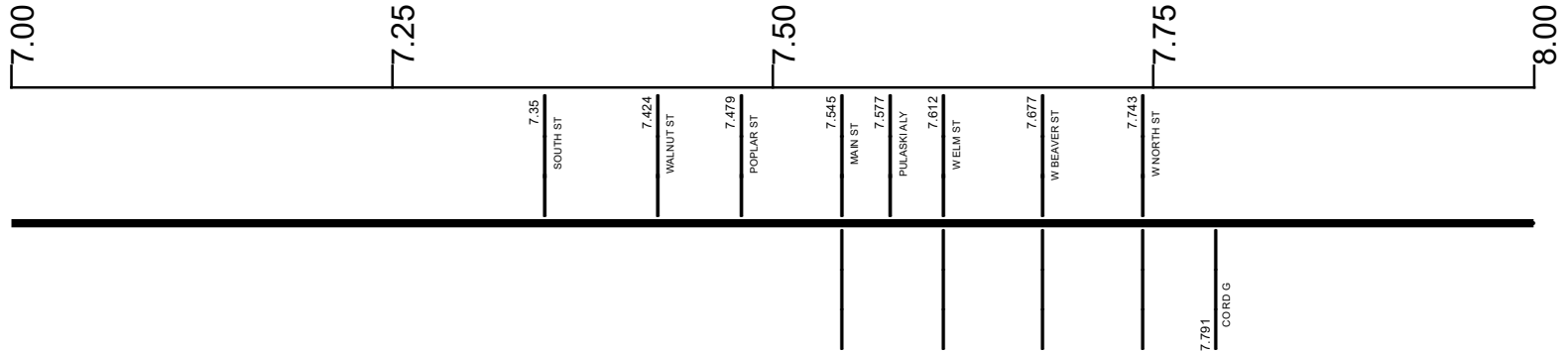
Prepared by
The Ohio Department of Transportation
Office of Technical Services
Roadway Information

SWILUS00127**C

State True Log

177.09

County True Log



Surface Type & Width (Left / Right)

G 24'	G 20'	G 24'	G 20'
4.089 - 7.047	7.047 - 7.376	7.376 - 7.908	7.908 - 8.749

Base Type (Left / Right)

N
5.705 - 14.341

Shoulder Type & Width (Left / Right)

2 (3/3')
5.705 - 14.341

Through Lanes

2
4.089 - 14.341

Street Name

US 127	HIGH ST	US 127
4.089 - 7.35	7.35 - 7.791	7.791 - 13.924

- Non-divided Highway
- Divided Highway
- Secondary Segment
- Corporation
- Bridge (on route)
- Underpass
- Overpass
- Railroad (at grade)
- Railroad (underpass)
- Railroad (overpass)
- Intersection

Created on: 6/23/2025

transportation.ohio.gov

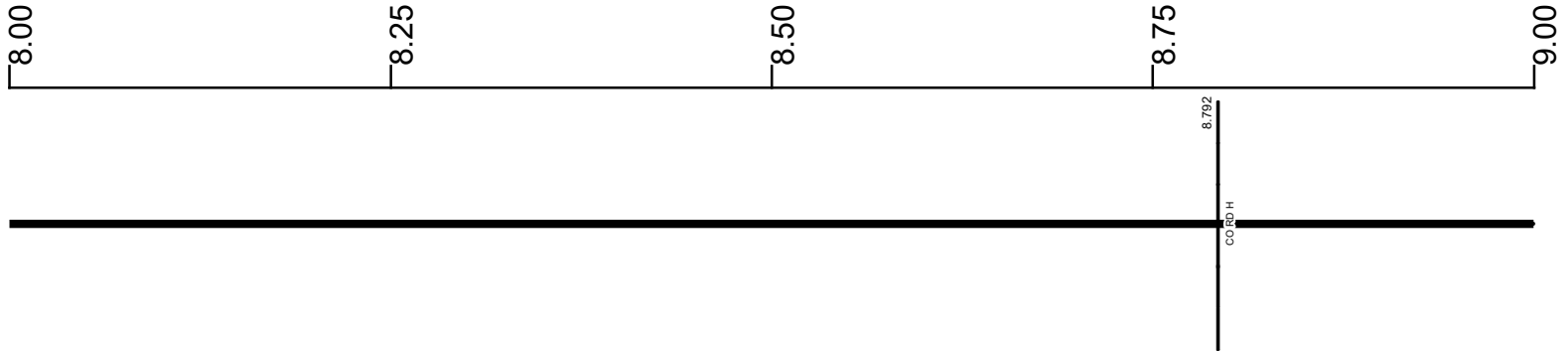
Prepared by
The Ohio Department of Transportation
Office of Technical Services
Roadway Information

SWILUS00127**C

State True Log

178.09

County True Log



Surface Type & Width (Left / Right)

G 20' 7.908 - 8.749	G 24' 8.749 - 9.047
------------------------	------------------------

Base Type (Left / Right)

N 5.705 - 14.341	
---------------------	--

Shoulder Type & Width (Left / Right)

2 (3/3) 5.705 - 14.341	
---------------------------	--

Through Lanes

2 4.089 - 14.341	
---------------------	--

Street Name

US 127 7.791 - 13.924	
--------------------------	--

- | | | | |
|--|---|---|---|
| <ul style="list-style-type: none"> Non-divided Highway Divided Highway Secondary Segment Corporation | <ul style="list-style-type: none"> Bridge (on route) Underpass Overpass | <ul style="list-style-type: none"> Railroad (at grade) Railroad (underpass) Railroad (overpass) | <ul style="list-style-type: none"> Intersection |
|--|---|---|---|

Created on: 6/23/2025

transportation.ohio.gov

Prepared by
The Ohio Department of Transportation
Office of Technical Services
Roadway Information

SWILUS00127**C

State True Log

179.09

County True Log



Surface Type & Width (Left / Right)

G 24'	G 20'	G 24'
8.749 - 9.047	9.047 - 9.936	9.936 - 10.474

Base Type (Left / Right)

	N	
	5.705 - 14.341	

Shoulder Type & Width (Left / Right)

	2 (3/3')	
	5.705 - 14.341	

Through Lanes

	2	
	4.089 - 14.341	

Street Name

	US 127	
	7.791 - 13.924	

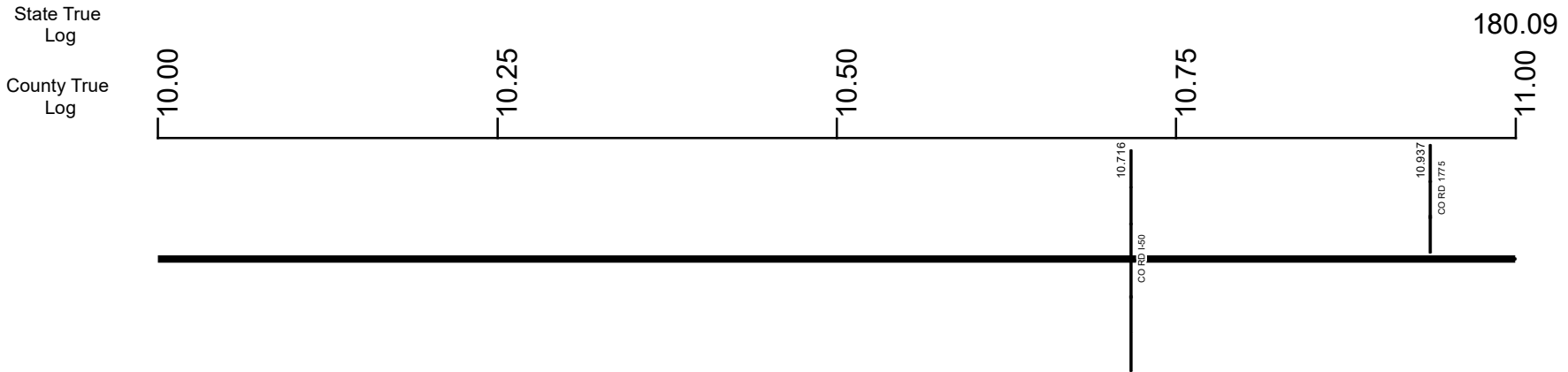
- Non-divided Highway
- Divided Highway
- Secondary Segment
- Corporation
- Bridge (on route)
- Underpass
- Overpass
- Railroad (at grade)
- Railroad (underpass)
- Railroad (overpass)
- Intersection

Created on: 6/23/2025

transportation.ohio.gov

Prepared by
The Ohio Department of Transportation
Office of Technical Services
Roadway Information

SWILUS00127**C



Surface Type & Width (Left / Right)

G 24'	G 20'
9.936 - 10.474	10.474 - 13.937

Base Type (Left / Right)

N	
5.705 - 14.341	

Shoulder Type & Width (Left / Right)

2 (3/3')	
5.705 - 14.341	

Through Lanes

2	
4.089 - 14.341	

Street Name

US 127	
7.791 - 13.924	

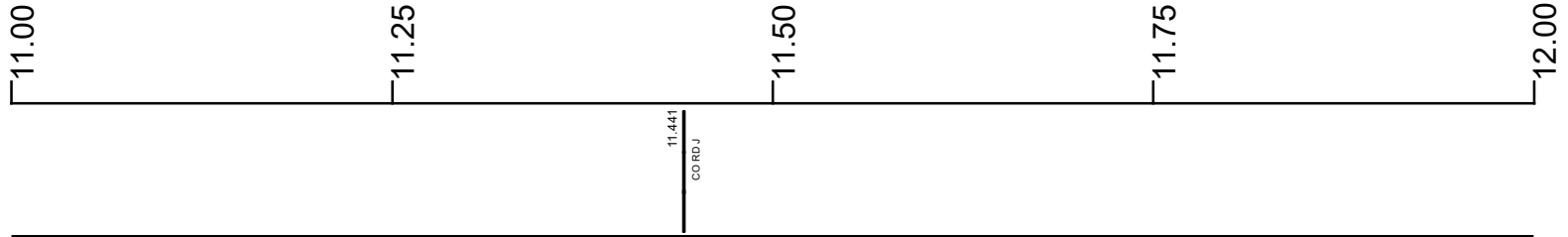
- | | | | |
|---------------------|-------------------|----------------------|--------------|
| Non-divided Highway | Bridge (on route) | Railroad (at grade) | Intersection |
| Divided Highway | Underpass | Railroad (underpass) | |
| Secondary Segment | Overpass | Railroad (overpass) | |
| Corporation | | | |

SWILUS00127**C

State True Log

181.09

County True Log



Surface Type & Width (Left / Right)

G 20'
10.474 - 13.937

Base Type (Left / Right)

N
5.705 - 14.341

Shoulder Type & Width (Left / Right)

2 (3/3)
5.705 - 14.341

Through Lanes

2
4.089 - 14.341

Street Name

US 127
7.791 - 13.924

- | | | | |
|---------------------|-------------------|----------------------|--------------|
| Non-divided Highway | Bridge (on route) | Railroad (at grade) | Intersection |
| Divided Highway | Underpass | Railroad (underpass) | |
| Secondary Segment | Overpass | Railroad (overpass) | |
| Corporation | | | |

Created on: 6/23/2025

transportation.ohio.gov

Prepared by
The Ohio Department of Transportation
Office of Technical Services
Roadway Information

SWILUS00127**C

State True Log

182.09

County True Log

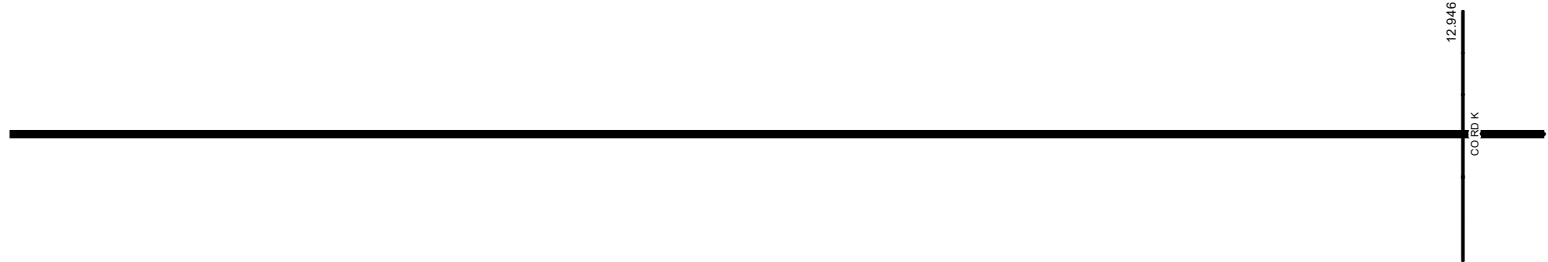
12.00

12.25

12.50

12.75

13.00



Surface Type & Width (Left / Right)

	G 20'
	10.474 - 13.937

Base Type (Left / Right)

	N
	5.705 - 14.341

Shoulder Type & Width (Left / Right)

	2 (3/3)
	5.705 - 14.341

Through Lanes

	2
	4.089 - 14.341

Street Name

	US 127
	7.791 - 13.924

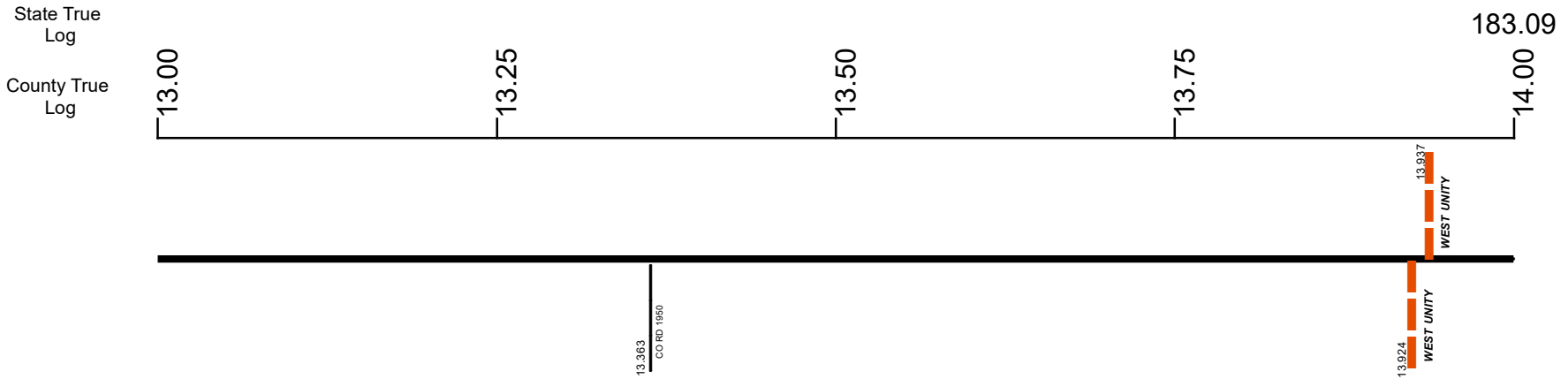
- | | | | |
|---------------------|-------------------|----------------------|--------------|
| Non-divided Highway | Bridge (on route) | Railroad (at grade) | Intersection |
| Divided Highway | Underpass | Railroad (underpass) | |
| Secondary Segment | Overpass | Railroad (overpass) | |
| Corporation | | | |

Created on: 6/23/2025

transportation.ohio.gov

Prepared by
The Ohio Department of Transportation
Office of Technical Services
Roadway Information

SWILUS00127**C



Surface Type & Width (Left / Right)	G 20'	G 24'
	10.474 - 13.937	13.937 - 14.341
Base Type (Left / Right)	N	
	5.705 - 14.341	
Shoulder Type & Width (Left / Right)	2 (3/3')	
	5.705 - 14.341	
Through Lanes	2	
	4.089 - 14.341	
Street Name	US 127	S DEFIANCE ST
	7.791 - 13.924	13.924 - 14.341

- Non-divided Highway
- Divided Highway
- Secondary Segment
- Corporation
- Bridge (on route)
- Underpass
- Overpass
- Railroad (at grade)
- Railroad (underpass)
- Railroad (overpass)
- Intersection

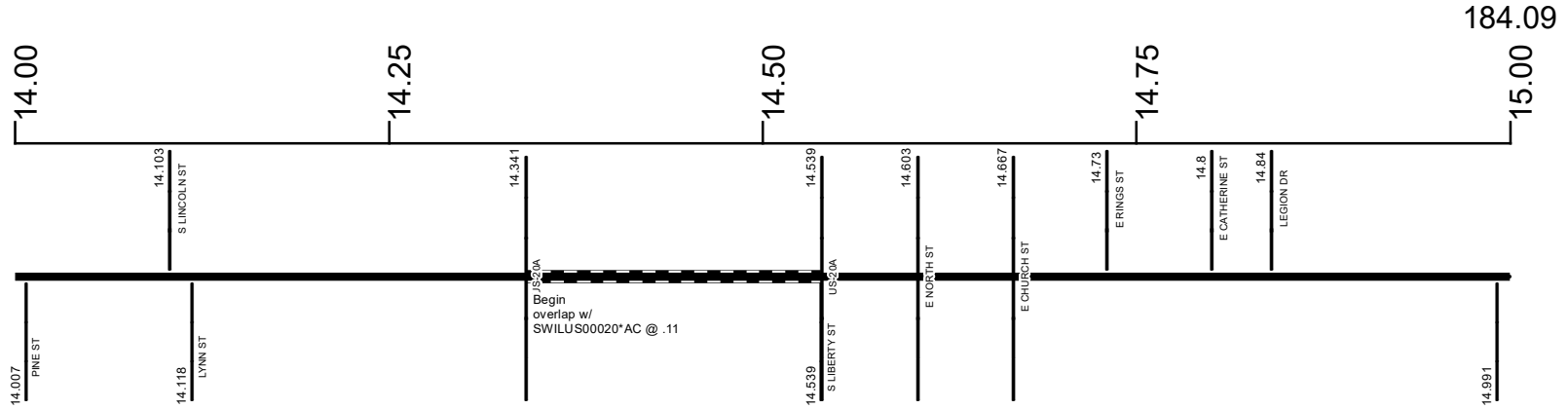
Created on: 6/23/2025



transportation.ohio.gov
 Prepared by
 The Ohio Department of Transportation
 Office of Technical Services
 Roadway Information

SWILUS00127**C

State True Log
County True Log



Surface Type & Width (Left / Right)

G 24'
13.937 - 14.341

Base Type (Left / Right)

N
5.705 - 14.341

Shoulder Type & Width (Left / Right)

2 (3/3')
5.705 - 14.341

Through Lanes

2
4.089 - 14.341

S DEFIANCE ST

13.924 - 14.341

Surface Type & Width (Left / Right)

G 28'	G 26'	G 20'
14.539 - 14.752	14.752 - 14.831	14.831 - 15.035

Base Type (Left / Right)

P	N	
14.539 - 14.752	14.752 - 15.035	

Shoulder Type & Width (Left / Right)

1 (0'/0')	2 (2'/2')	
14.539 - 14.831	14.831 - 15.035	

Through Lanes

2
14.539 - 20.249

Street Name

N LIBERTY ST
14.539 - 15.077

- Non-divided Highway
- Divided Highway
- Secondary Segment
- Corporation
- Bridge (on route)
- Underpass
- Overpass
- Railroad (at grade)
- Railroad (underpass)
- Railroad (overpass)
- Intersection

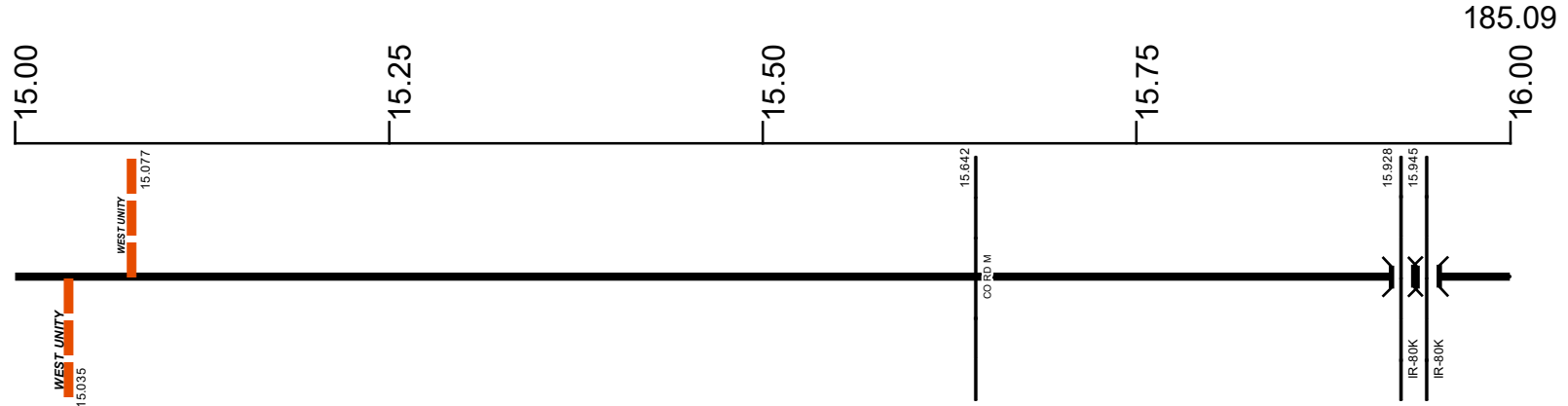
Created on: 6/23/2025

transportation.ohio.gov

Prepared by
The Ohio Department of Transportation
Office of Technical Services
Roadway Information

SWILUS00127**C

State True Log
County True Log



Surface Type & Width (Left / Right)

G 20'	G (16'4')
14.831 - 15.035	15.035 - 16.788

Base Type (Left / Right)

N	K / I
14.752 - 15.035	15.035 - 16.788

Shoulder Type & Width (Left / Right)

2 (2'2')	2 (2'3')
14.831 - 15.035	15.035 - 16.788

Through Lanes

	2
	14.539 - 20.249

Street Name

N LIBERTY ST	US 127
14.539 - 15.077	15.077 - 20.249

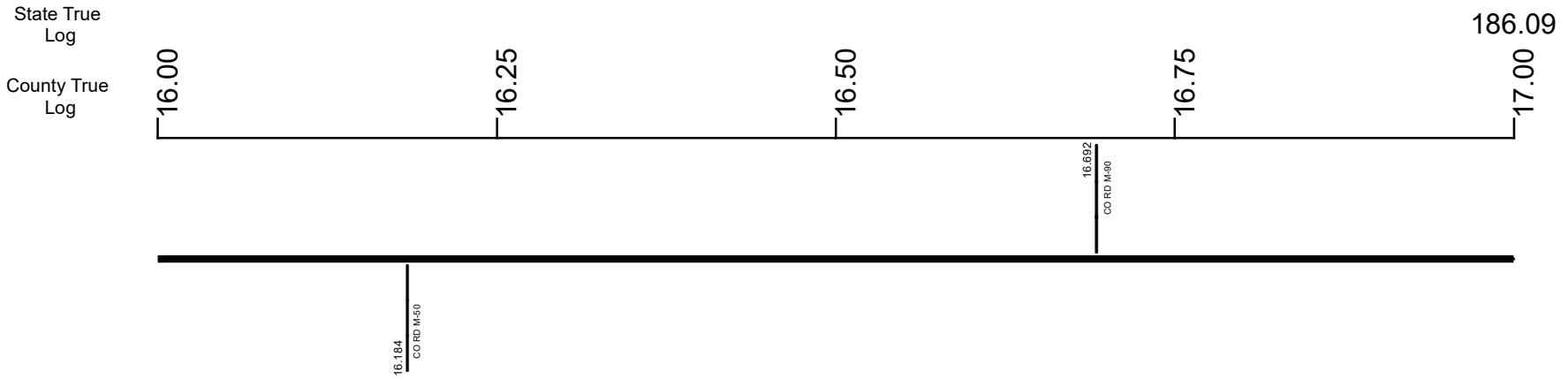
- Non-divided Highway
- Divided Highway
- Secondary Segment
- Corporation
- Bridge (on route)
- Underpass
- Overpass
- Railroad (at grade)
- Railroad (underpass)
- Railroad (overpass)
- Intersection

Created on: 6/23/2025

transportation.ohio.gov

Prepared by
The Ohio Department of Transportation
Office of Technical Services
Roadway Information

SWILUS00127**C



Surface Type & Width (Left / Right)	
G (16'4')	G 20'
15.035 - 16.788	16.788 - 20.249
Base Type (Left / Right)	
K / I	I
15.035 - 16.788	16.788 - 20.249
Shoulder Type & Width (Left / Right)	
2 (2'3')	2 (3'3')
15.035 - 16.788	16.788 - 20.249
Through Lanes	
2	
14.539 - 20.249	
Street Name	
US 127	
15.077 - 20.249	

<ul style="list-style-type: none"> Non-divided Highway Divided Highway Secondary Segment Corporation 	<ul style="list-style-type: none"> Bridge (on route) Underpass Overpass 	<ul style="list-style-type: none"> Railroad (at grade) Railroad (underpass) Railroad (overpass) 	<ul style="list-style-type: none"> Intersection
--	---	---	---

Created on: 6/23/2025

transportation.ohio.gov

Prepared by
The Ohio Department of Transportation
Office of Technical Services
Roadway Information

SWILUS00127**C

State True Log

187.09

County True Log

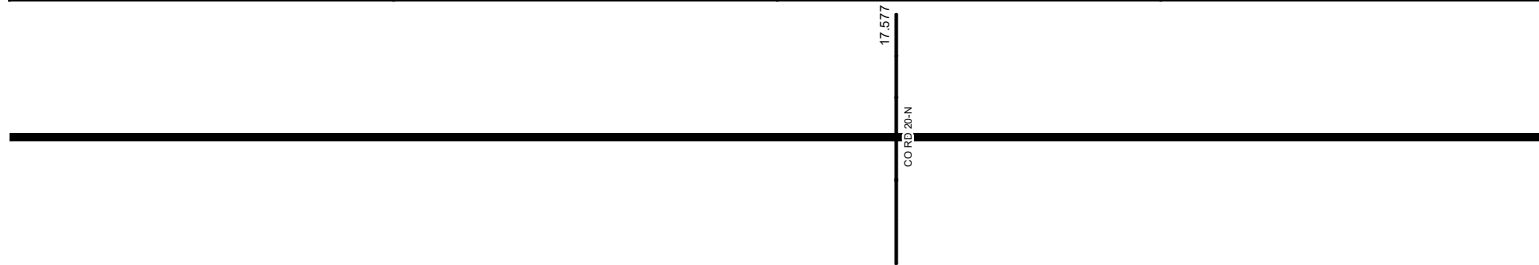
17.00

17.25

17.50

17.75

18.00



Surface Type & Width (Left / Right)

G 20'
16.788 - 20.249

Base Type (Left / Right)

I
16.788 - 20.249

Shoulder Type & Width (Left / Right)

2 (3/3)
16.788 - 20.249

Through Lanes

2
14.539 - 20.249

Street Name

US 127
15.077 - 20.249

- | | | | |
|---------------------|-------------------|----------------------|--------------|
| Non-divided Highway | Bridge (on route) | Railroad (at grade) | Intersection |
| Divided Highway | Underpass | Railroad (underpass) | |
| Secondary Segment | Overpass | Railroad (overpass) | |
| Corporation | | | |

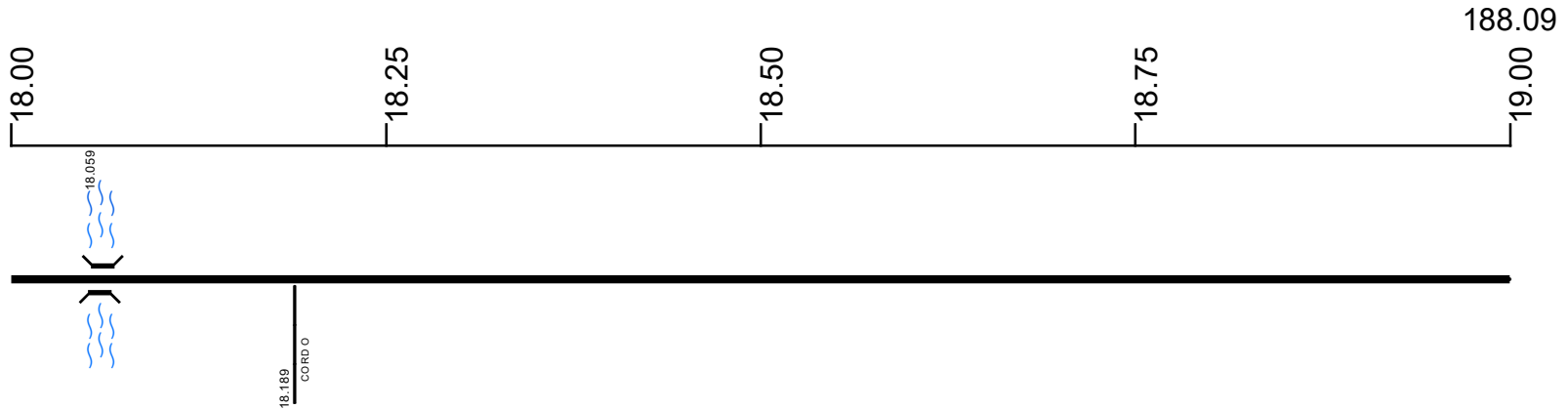
Created on: 6/23/2025

transportation.ohio.gov

Prepared by
The Ohio Department of Transportation
Office of Technical Services
Roadway Information

SWILUS00127**C

State True Log
County True Log



Surface Type & Width (Left / Right)

G 20'
16.788 - 20.249

Base Type (Left / Right)

I
16.788 - 20.249

Shoulder Type & Width (Left / Right)

2 (3/3)
16.788 - 20.249

Through Lanes

2
14.539 - 20.249

Street Name

US 127
15.077 - 20.249

- | | | | |
|---------------------|-------------------|----------------------|--------------|
| Non-divided Highway | Bridge (on route) | Railroad (at grade) | Intersection |
| Divided Highway | Underpass | Railroad (underpass) | |
| Secondary Segment | Overpass | Railroad (overpass) | |
| Corporation | | | |

Created on: 6/23/2025



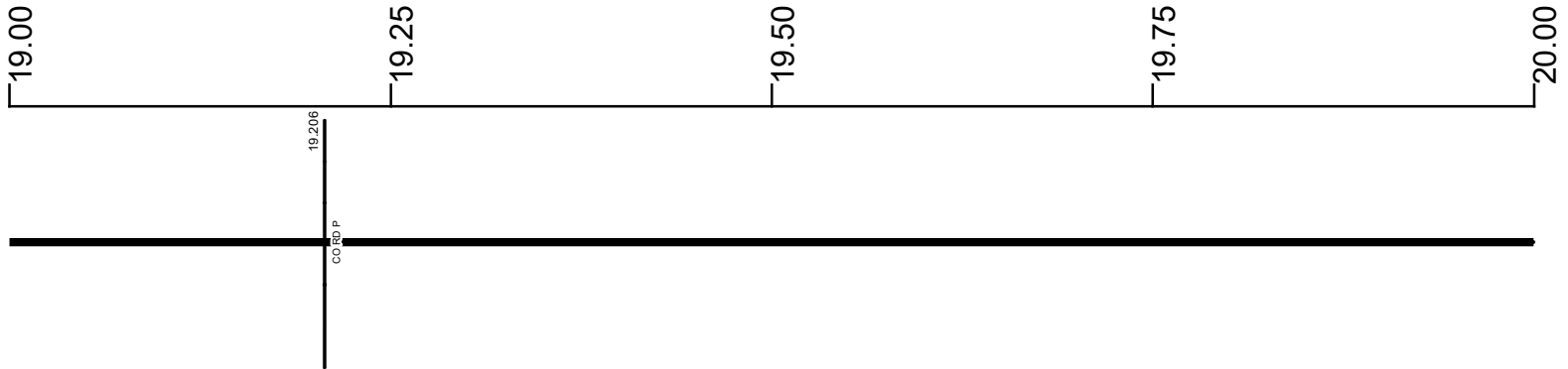
transportation.ohio.gov
Prepared by
The Ohio Department of Transportation
Office of Technical Services
Roadway Information

SWILUS00127**C

State True Log

189.09

County True Log



Surface Type & Width (Left / Right)

G 20'
16.788 - 20.249

Base Type (Left / Right)

I
16.788 - 20.249

Shoulder Type & Width (Left / Right)

2 (3/3)
16.788 - 20.249

Through Lanes

2
14.539 - 20.249

Street Name

US 127
15.077 - 20.249

- Non-divided Highway
 Bridge (on route)
 Railroad (at grade)
 Intersection
- Divided Highway
 Underpass
 Railroad (underpass)
- Secondary Segment
 Overpass
 Railroad (overpass)
- Corporation**

Created on: 6/23/2025



transportation.ohio.gov

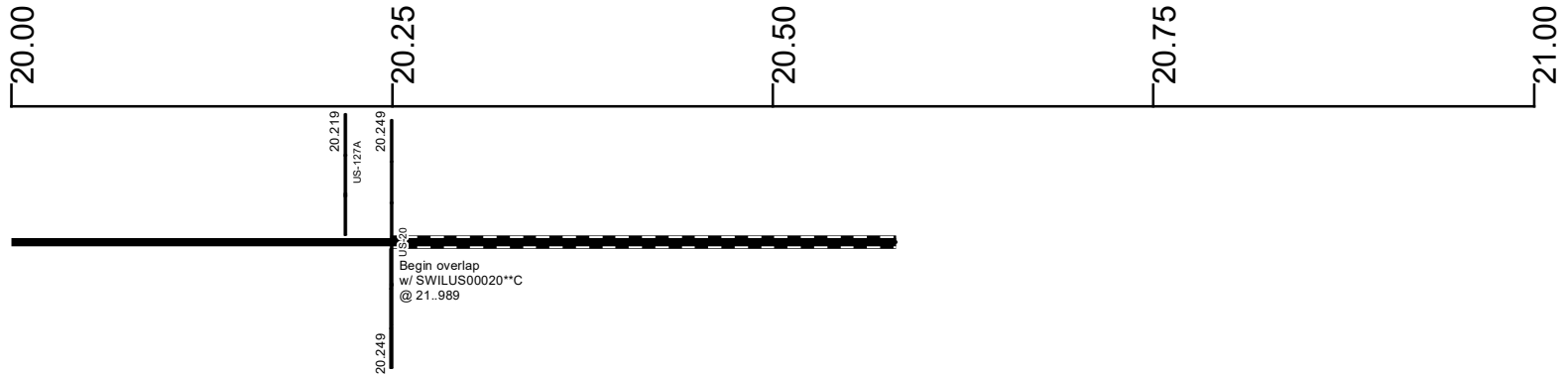
Prepared by
The Ohio Department of Transportation
Office of Technical Services
Roadway Information

SWILUS00127**C

189.671

State True Log

County True Log



Surface Type & Width (Left / Right)

G 20'
16.788 - 20.249

Base Type (Left / Right)

I
16.788 - 20.249

Shoulder Type & Width (Left / Right)

2 (3/3)
16.788 - 20.249

Through Lanes

2
14.539 - 20.249

Street Name

US 127
15.077 - 20.249

- Non-divided Highway
- Divided Highway
- Secondary Segment
- Corporation
- Bridge (on route)
- Underpass
- Overpass
- Railroad (at grade)
- Railroad (underpass)
- Railroad (overpass)
- Intersection

Created on: 6/23/2025



transportation.ohio.gov
Prepared by
The Ohio Department of Transportation
Office of Technical Services
Roadway Information

Historical Project List for SWILUS00127**C

Begin Measure	End Measure	Project ID Number	Construction Completion Date	Treatment Category	Treatment Type
0.000	0.975	101219	10-2020	Minor Rehabilitation	38-Fine Poly AC Overlay
0.000	1.915	85270	12-2011	Minor Rehabilitation	60-AC Overlay w/Rpr
1.045	1.935	101219	10-2020	Minor Rehabilitation	38-Fine Poly AC Overlay
2.275	3.938	106399	7-2019	Minor Rehabilitation	60-AC Overlay w/Rpr
4.089	5.707	102821	8-2019	Minor Rehabilitation	60-AC Overlay w/Rpr
5.697	14.341	22711	7-2003	Minor Rehabilitation	60-AC Overlay w/Rpr
5.707	5.727	102821	8-2019	Minor Rehabilitation	60-AC Overlay w/Rpr
5.727	13.921	102821	8-2019	Minor Rehabilitation	38-Fine Poly AC Overlay
13.961	14.341	88491	10-2013	Minor Rehabilitation	60-AC Overlay w/Rpr
14.549	15.089	88491	10-2013	Minor Rehabilitation	60-AC Overlay w/Rpr
15.089	20.249	85270	12-2011	Preventive Maintenance	55-Double Chip Seal

Roadway Codes

Access Control Journalized

- F - Full Access Control
- L - Limited Access Control
- N - No Access Control

Access Control Operational

- 1 - Full Access Control
- 2 - Partial Access Control
- 3 - No Access Control

Base Type

- F - Crack and Seat
- H - Rubblize and Roll
- I - Aggregate Base 304 or Traffic Compacted
- K - Water Bound Macadam
- L - Bituminous Concrete Mix or Penetration Macadam
- N - Plain Concrete
- P - Reinforced Concrete
- R - Brick (Flexible)
- T - Brick (Rigid)

Direction of Travel

- B - Both (Two-way)
- F - One-way Cardinal
- T - One-way Non-cardinal

Facility Type

- 1 - One-way Roadway
- 2 - Two-way Roadway
- 4 - Ramp
- 5 - Non-mainline
- 6 - Non-inventory Direction
- 7 - Planned / Unbuilt

Historical Federal Aid Indicator

- N - Not a FAP Route
- Y - FAP Route

Functional Classification

- 01 - Interstate
- 02 - Principal Arterial (Freeways)
- 03 - Principal Arterial (Other)
- 04 - Minor Arterial
- 05 - Major Collector
- 06 - Minor Collector
- 07 - Local

Leave / Reenter Indicator

- Y - Route leaves/reenters at this point
- N - Route does not leave/reenter at this point

Median Type

- 1 - None
- 2 - Unprotected
- 3 - Curbed
- 4 - Positive Barrier (Unspecified)
- 5 - Positive Barrier (Flexible)
- 6 - Positive Barrier (Semi-rigid)
- 7 - Positive Barrier (Rigid)

NHS

- N - National Highway System
- H - Congressional Corridor
- 2 - Major Airport
- 3 - Major Port Facility
- 4 - Major Amtrak Station
- 5 - Major Rail / Truck Terminal
- 6 - Major Intercity Bus Terminal
- 7 - Major Public Transit / Multi-modal Passenger Terminal
- 8 - Major Pipeline Terminal
- 9 - Major Ferry Terminal

Priority System

- G - General
- P - Priority System
- U - Urban

Scenic Byway Code

- A - All American Road
- N - National Scenic Byway
- S - State Scenic Byway

Shoulder Type

- 1 - None
- 2 - Surfaced shoulder exists (bituminous concrete {AC})
- 3 - Surfaced shoulder exists (Portland Cement Concrete {PCC})
- 4 - Stabilized shoulder exists (gravel or other granular material)
- 5 - Combination shoulder exists (two or more surface types)
- 6 - Earth shoulder exists
- 7 - Barrier curb exists; no shoulder in front of curb

Surface Type

- A - Combination
- B - Brick
- C - Continuous Reinforced Concrete
- D - Reinforced Concrete
- E - Plain Concrete
- G - Bituminous Concrete
- I - Chipseal on Granular
- K - Open Graded Bituminous
- L - Chipseal or Micro
- M - Gravel
- U - Unimproved
- X - Right of Way Only