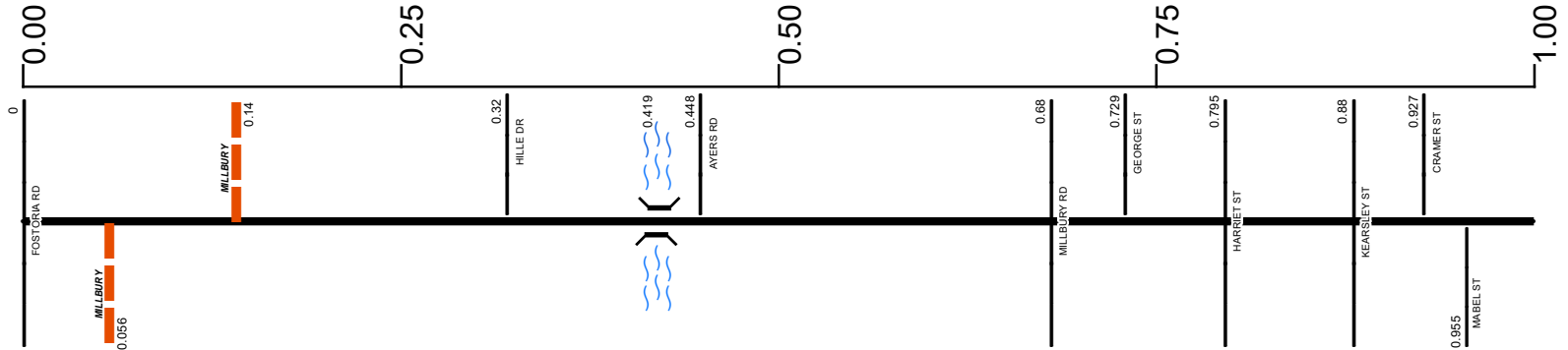


# SWOOSR00051\*\*C

State True Log 12.672

13.672

County True Log



Surface Type & Width (Left / Right)

G 24'  
0 - 3.038

Base Type (Left / Right)

N  
0 - 4.083

Shoulder Type & Width (Left / Right)

2 (13'/13')  
0 - 3.038

Through Lanes

2  
0 - 3.098

Street Name

WOODVILLE RD  
0 - 5.128

- |                     |                   |                      |              |
|---------------------|-------------------|----------------------|--------------|
| Non-divided Highway | Bridge (on route) | Railroad (at grade)  | Intersection |
| Divided Highway     | Underpass         | Railroad (underpass) |              |
| Secondary Segment   | Overpass          | Railroad (overpass)  |              |
| Corporation         |                   |                      |              |

Created on: 7/9/2025



transportation.ohio.gov

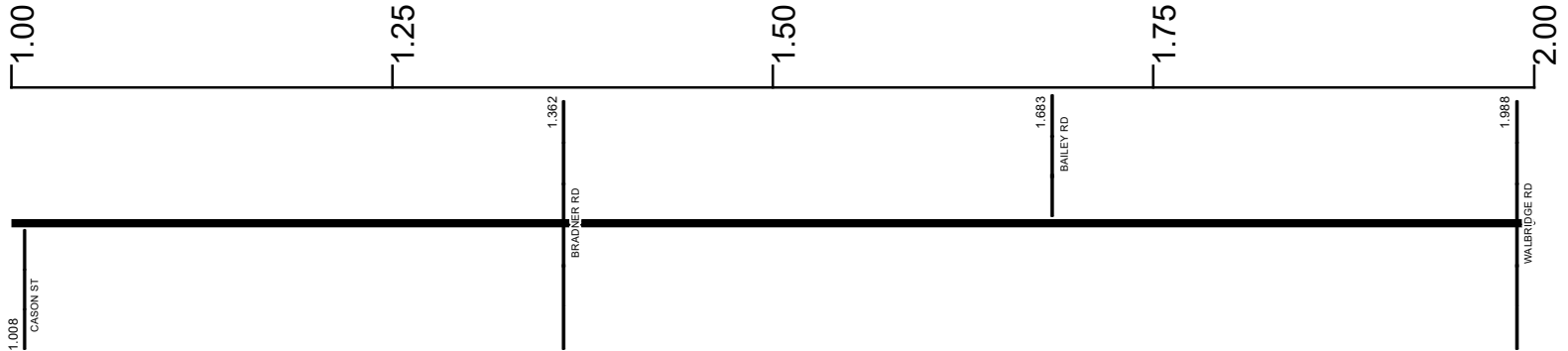
Prepared by  
The Ohio Department of Transportation  
Office of Technical Services  
Roadway Information

# SWOOSR00051\*\*C

State True Log

14.672

County True Log



Surface Type & Width (Left / Right)

G 24'  
0 - 3.038

Base Type (Left / Right)

N  
0 - 4.083

Shoulder Type & Width (Left / Right)

2 (13'/13')  
0 - 3.038

Through Lanes

2  
0 - 3.098

Street Name

WOODVILLE RD  
0 - 5.128

- Non-divided Highway
  Bridge (on route)
  Railroad (at grade)
  Intersection
- Divided Highway
  Underpass
  Railroad (underpass)
- Secondary Segment
  Overpass
  Railroad (overpass)
- Corporation**

Created on: 7/9/2025



transportation.ohio.gov

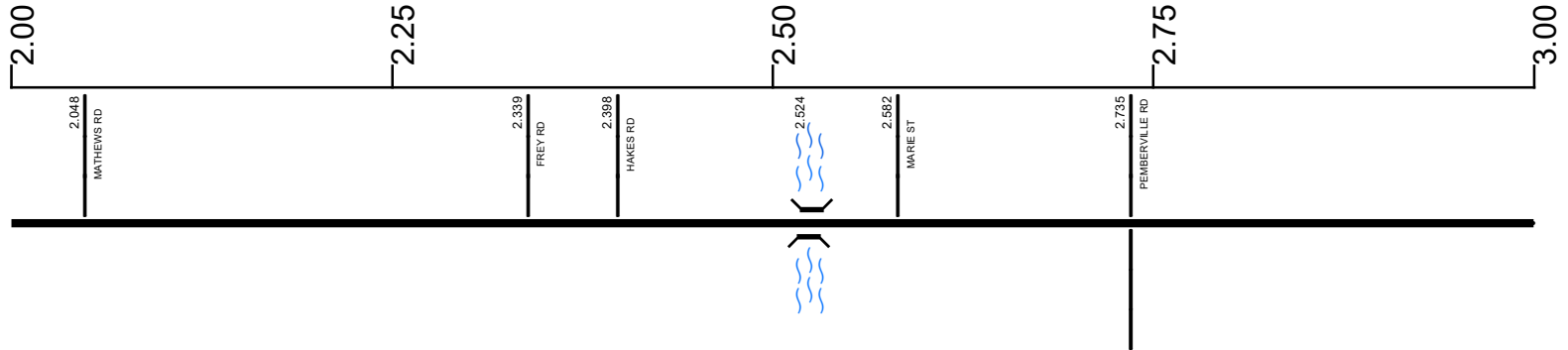
Prepared by  
The Ohio Department of Transportation  
Office of Technical Services  
Roadway Information

# SWOOSR00051\*\*C

State True Log

15.672

County True Log



Surface Type & Width (Left / Right)

G 24'  
0 - 3.038

Base Type (Left / Right)

N  
0 - 4.083

Shoulder Type & Width (Left / Right)

2 (13'/13')  
0 - 3.038

Through Lanes

2  
0 - 3.098

Street Name

WOODVILLE RD  
0 - 5.128

- |                     |                   |                      |              |
|---------------------|-------------------|----------------------|--------------|
| Non-divided Highway | Bridge (on route) | Railroad (at grade)  | Intersection |
| Divided Highway     | Underpass         | Railroad (underpass) |              |
| Secondary Segment   | Overpass          | Railroad (overpass)  |              |
| Corporation         |                   |                      |              |

Created on: 7/9/2025

transportation.ohio.gov

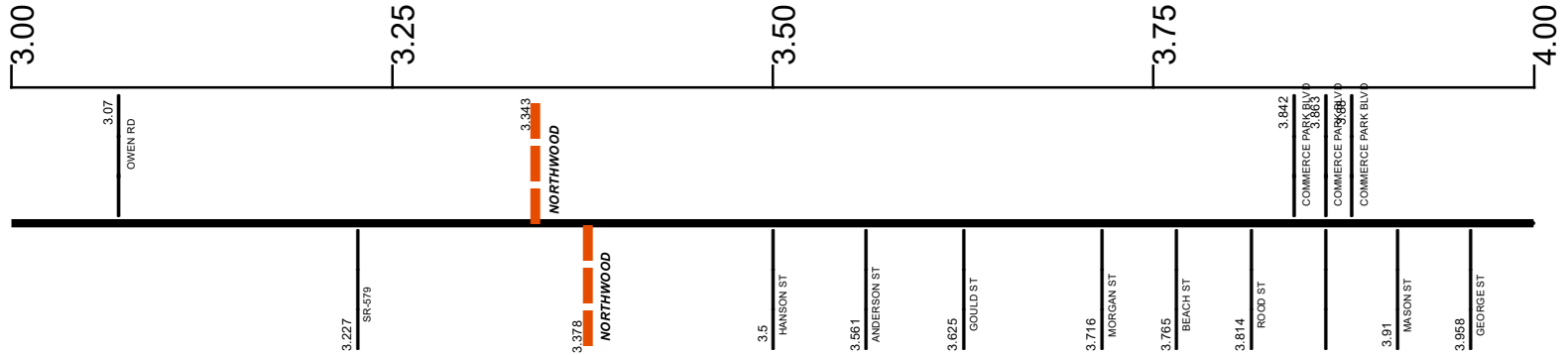
Prepared by  
The Ohio Department of Transportation  
Office of Technical Services  
Roadway Information

# SWOOSR00051\*\*C

State True Log

16.672

County True Log



**Surface Type & Width (Left / Right)**

G 24'	G 30'	G 60'	G 52'
0 - 3.038	3.038 - 3.098	3.098 - 3.495	3.495 - 4.083

**Base Type (Left / Right)**

N
0 - 4.083

**Shoulder Type & Width (Left / Right)**

2 (13'/13')	2 (10'/10')	2 (8'/8')
0 - 3.038	3.038 - 3.495	3.495 - 4.083

**Through Lanes**

2	4
0 - 3.098	3.098 - 5.128

**Street Name**

WOODVILLE RD
0 - 5.128

- Non-divided Highway
- Divided Highway
- Secondary Segment
- Corporation
- Bridge (on route)
- Underpass
- Overpass
- Railroad (at grade)
- Railroad (underpass)
- Railroad (overpass)
- Intersection

Created on: 7/9/2025

transportation.ohio.gov

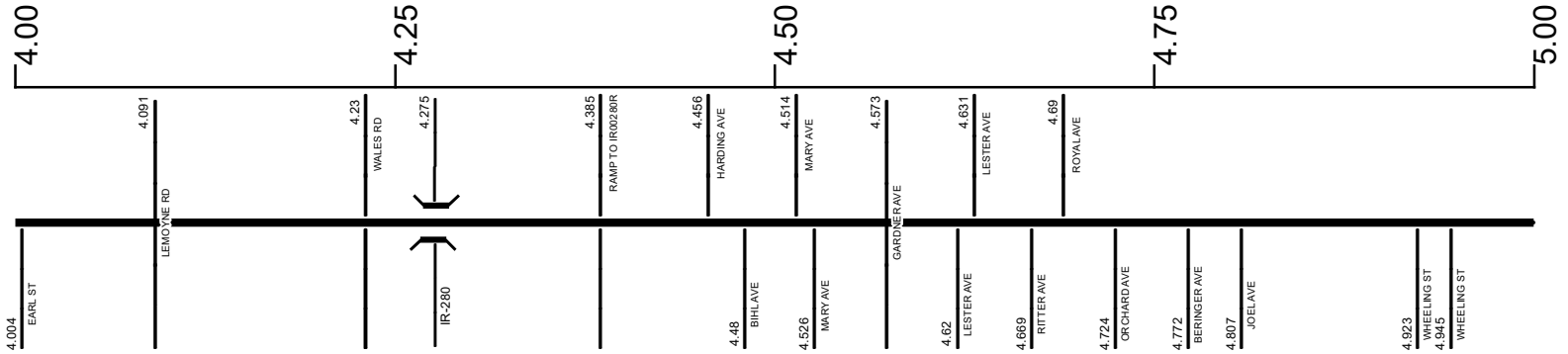
Prepared by  
The Ohio Department of Transportation  
Office of Technical Services  
Roadway Information

# SWOOSR00051\*\*C

State True Log

17.672

County True Log



**Surface Type & Width (Left / Right)**

G 52'	G 54'	G 56'
3.495 - 4.083	4.083 - 4.46	4.46 - 5.128

**Base Type (Left / Right)**

N	P	N
0 - 4.083	4.083 - 4.46	4.46 - 5.128

**Shoulder Type & Width (Left / Right)**

2 (8'/8')	1 (0'/0')	
3.495 - 4.083	4.083 - 5.128	

**Through Lanes**

	4	
	3.098 - 5.128	

**Street Name**

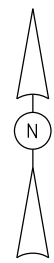
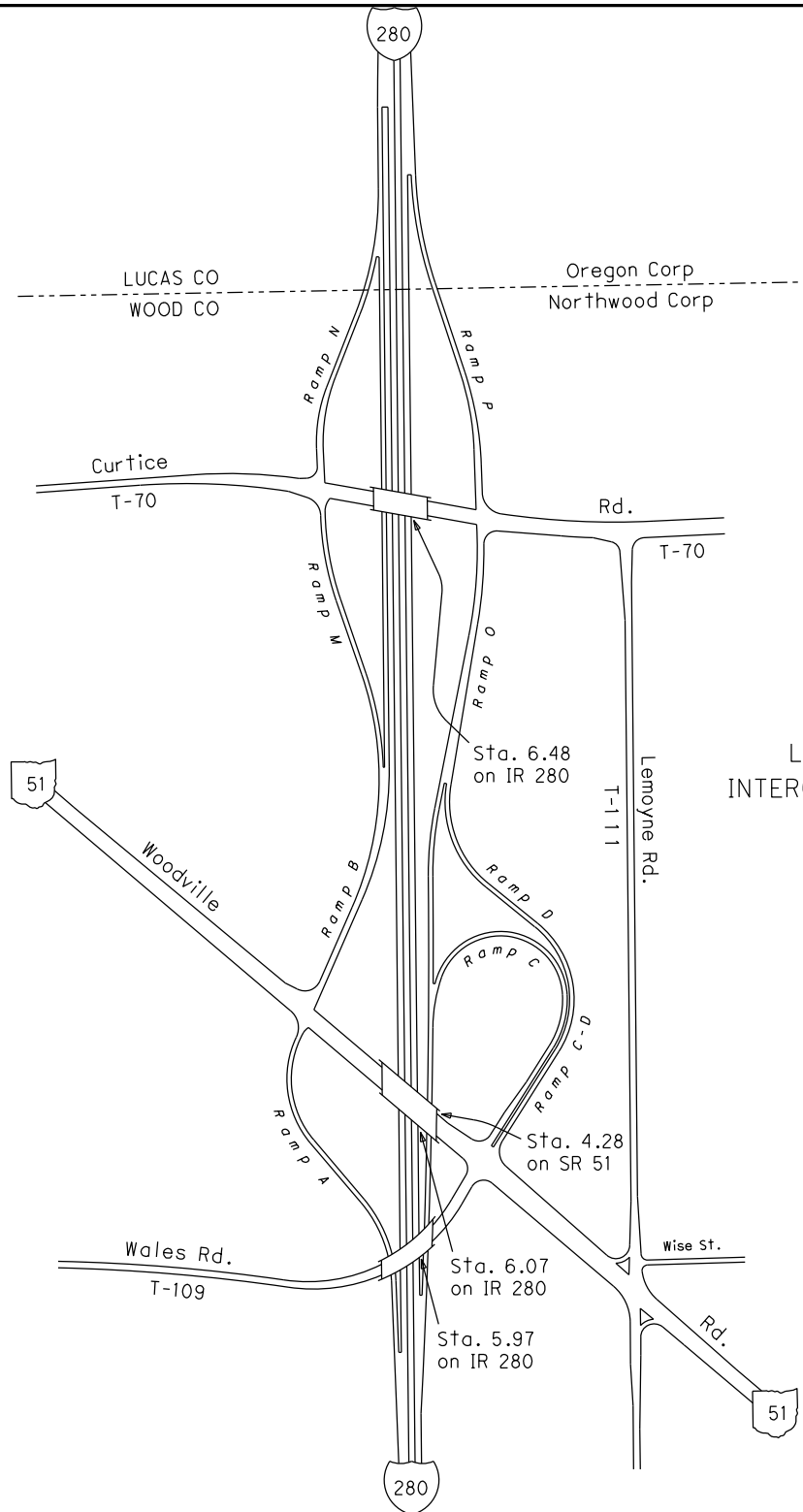
	WOODVILLE RD	
	0 - 5.128	

- Non-divided Highway
- Divided Highway
- Secondary Segment
- Corporation
- Bridge (on route)
- Underpass
- Overpass
- Railroad (at grade)
- Railroad (underpass)
- Railroad (overpass)
- Intersection

Created on: 7/9/2025

transportation.ohio.gov

Prepared by  
The Ohio Department of Transportation  
Office of Technical Services  
Roadway Information



INTERCHANGES  
 IR 280, SR 51 &  
 Curtice Rd.  
 LUCAS & WOOD COUNTIES  
 INTERCHANGE ID NUMBER = 060400

LUC IR280 SHEET 1 OF 3  
 WOO IR280 SHEET 2 OF 2  
 WOO SR51 SHEET 1 OF 2

REVISED Jan 2010

# SWOOSR00051\*\*C

State True Log

17.8

County True Log



Surface Type & Width (Left / Right)

G 56'

4.46 - 5.128

Base Type (Left / Right)

N

4.46 - 5.128

Shoulder Type & Width (Left / Right)

1 (0'/0')

4.083 - 5.128

Through Lanes

4

3.098 - 5.128

Street Name

WOODVILLE RD

0 - 5.128

- |  |   |   |   |
|--|---|---|---|
| <ul style="list-style-type: none"> <li> Non-divided Highway</li> <li> Divided Highway</li> <li> Secondary Segment</li> <li> Corporation</li> </ul> | <ul style="list-style-type: none"> <li> Bridge (on route)</li> <li> Underpass</li> <li> Overpass</li> </ul> | <ul style="list-style-type: none"> <li> Railroad (at grade)</li> <li> Railroad (underpass)</li> <li> Railroad (overpass)</li> </ul> | <ul style="list-style-type: none"> <li> Intersection</li> </ul> |
|--|---|---|---|

Created on: 7/9/2025



Prepared by  
The Ohio Department of Transportation  
Office of Technical Services  
Roadway Information

## Historical Project List for SWOOSR00051\*\*C

Begin Measure	End Measure	Project ID Number	Construction Completion Date	Treatment Category	Treatment Type
0.000	3.379	100342	8-2017	Minor Rehabilitation	38-Fine Poly AC Overlay
0.000	2.519	81953	5-2008	Preventive Maintenance	20-Crack Sealing
2.529	5.128	23748	9-2004	Minor Rehabilitation	60-AC Overlay w/Rpr

# Roadway Codes

## Access Control Journalized

- F - Full Access Control
- L - Limited Access Control
- N - No Access Control

## Access Control Operational

- 1 - Full Access Control
- 2 - Partial Access Control
- 3 - No Access Control

## Base Type

- F - Crack and Seat
- H - Rubblize and Roll
- I - Aggregate Base 304 or Traffic Compacted
- K - Water Bound Macadam
- L - Bituminous Concrete Mix or Penetration Macadam
- N - Plain Concrete
- P - Reinforced Concrete
- R - Brick (Flexible)
- T - Brick (Rigid)

## Direction of Travel

- B - Both (Two-way)
- F - One-way Cardinal
- T - One-way Non-cardinal

## Facility Type

- 1 - One-way Roadway
- 2 - Two-way Roadway
- 4 - Ramp
- 5 - Non-mainline
- 6 - Non-inventory Direction
- 7 - Planned / Unbuilt

## Historical Federal Aid Indicator

- N - Not a FAP Route
- Y - FAP Route

## Functional Classification

- 01 - Interstate
- 02 - Principal Arterial (Freeways)
- 03 - Principal Arterial (Other)
- 04 - Minor Arterial
- 05 - Major Collector
- 06 - Minor Collector
- 07 - Local

## Leave / Reenter Indicator

- Y - Route leaves/reenters at this point
- N - Route does not leave/reenter at this point

## Median Type

- 1 - None
- 2 - Unprotected
- 3 - Curbed
- 4 - Positive Barrier (Unspecified)
- 5 - Positive Barrier (Flexible)
- 6 - Positive Barrier (Semi-rigid)
- 7 - Positive Barrier (Rigid)

## NHS

- N - National Highway System
- H - Congressional Corridor
- 2 - Major Airport
- 3 - Major Port Facility
- 4 - Major Amtrak Station
- 5 - Major Rail / Truck Terminal
- 6 - Major Intercity Bus Terminal
- 7 - Major Public Transit / Multi-modal Passenger Terminal
- 8 - Major Pipeline Terminal
- 9 - Major Ferry Terminal

## Priority System

- G - General
- P - Priority System
- U - Urban

## Scenic Byway Code

- A - All American Road
- N - National Scenic Byway
- S - State Scenic Byway

## Shoulder Type

- 1 - None
- 2 - Surfaced shoulder exists (bituminous concrete {AC})
- 3 - Surfaced shoulder exists (Portland Cement Concrete {PCC})
- 4 - Stabilized shoulder exists (gravel or other granular material)
- 5 - Combination shoulder exists (two or more surface types)
- 6 - Earth shoulder exists
- 7 - Barrier curb exists; no shoulder in front of curb

## Surface Type

- A - Combination
- B - Brick
- C - Continuous Reinforced Concrete
- D - Reinforced Concrete
- E - Plain Concrete
- G - Bituminous Concrete
- I - Chipseal on Granular
- K - Open Graded Bituminous
- L - Chipseal or Micro
- M - Gravel
- U - Unimproved
- X - Right of Way Only