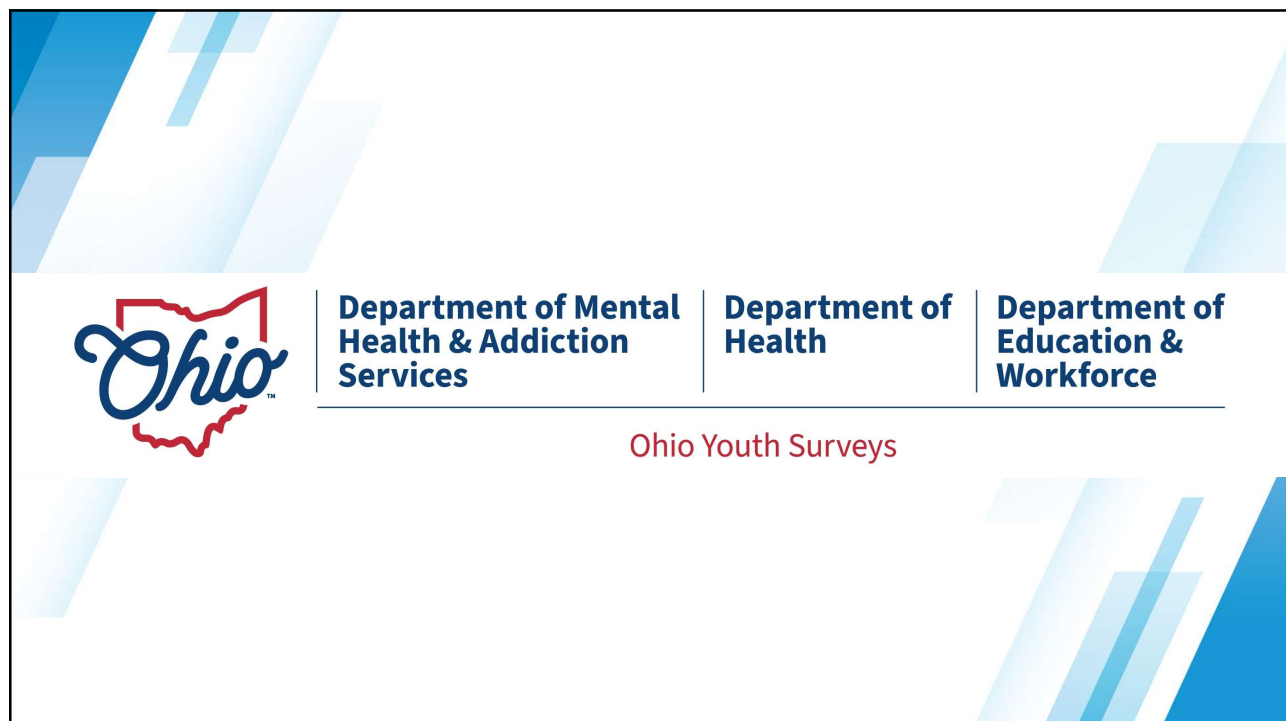


1



2

Our Shared Goal:

Happy and Healthy Students



3

Why It Matters: Ohio Students Face Serious Challenges



- 1 in 3 Ohio students report challenges with **anxiety** (OHYES!)
- 1 in 3 report feeling **sad and hopeless**
- Nearly 115,000 high school-aged student in Ohio have experienced **depression**
- Contributing risk factors: poverty, Adverse Childhood Experiences (ACEs), and societal stressors.
- The challenges directly impact students' well-being ability to learn effectively.

4

4

Impact on Learning and Behavior

Learning Difficulties

- Organizing narrative material
- Understanding cause and effect
- Taking another's perspective
- Staying Attentive
- Regulating emotions
- Engaging in classroom curriculum

Behavioral Challenges

- Lack of motivation
- Reactivity and impulsivity
- Aggression or defiance
- Social withdrawal
- Perfectionism
- Fight-flight-freeze responses

5

5

By understanding students' challenges, we can plan supports to create a safe, positive environment.



6

6



What is OHYES!?

- A statewide student survey identifying risk and protective factors in youth behavior and wellness.
- Empowers high-impact change by uncovering student needs at the local level.
- Offers insights on where youth are thriving and helps build on what works.

7

7

Who Participates?



**Available to
all Ohio schools
(public and private)**



**For students in
grades 7-12**



**Schools choose grades
and classes to
participate**

8

8

What Does The Survey Ask?



Feelings about school and community



Mental health, suicide, and access to health care



Personal use of alcohol, tobacco, and other drugs



Family and personal relationships



Perceptions of substance-use risks



Health behaviors, sleep, nutrition, and exercise

Items come from validated national surveys (for example, the Youth Risk Behavior Survey and the National Survey on Drug Use and Health).

9

9

**SCHOOL
CHOICE**

Schools Choose Which Survey Version

- English and Spanish
- Standard 110-item survey
- Optional 120-item version
 - Sexual behavior (sexual activity, contraception, drug/alcohol use before sex)
 - forced sexual activity
 - Experiences of discrimination based on perceived sexual orientation
 - These questions help identify at-risk groups so that appropriate supports and interventions can be provided.
- View surveys online at: <https://youthsurveys.ohio.gov/our-surveys/ohyes>
 - under Additional Downloads on the right:

10

10

Fall 2025 Updates

- **Official Spanish translation** (survey & parent notification)
- **Voice-over** support for accessibility
- Updated **race question** per OMB
 - Added Middle Eastern/North African
 - Added race group descriptions
- **Sex question revised** to only include female/male
- Section header for the suicide items
- Language updated to match CDC's YRBS



11

11

How Is The Survey Administered?

**Administered
at School**

**In class – takes
1 class period**

**Schools choose
fall date to
administer**

12

12

School Planning and Administering Process

Enroll.

Choose survey date, time, and classes.

Inform and prepare school staff.

Inform parents and students: customize and send parent notifications 3 weeks before the survey.

Track and manage opt-out forms.

Assign/train survey administrators.

Check technology.

Survey day:

Share the opt-out lists.

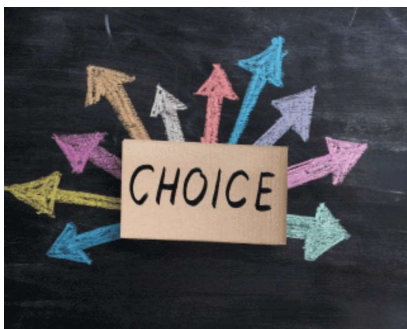
Provide the web link.

Read the script.

13

13

OHYES! Values Parent and Student Choice



- **OHYES! is committed to promoting the health, wellness, and safety of Ohio students working with schools to ensure the survey is conducted safely and confidentially.**
- **Participation is Voluntary for Students and Parents**
 - ✓ Students can skip question or exit the survey at any time
 - ✓ Parents are notified by the school by at least 2 methods, 3+ weeks before administration.

14

14

Ensuring Anonymity and Confidentiality

- Administration Details:
 - ✓ Conducted in person at school (not virtual)
 - ✓ No personal identifiers, IP addresses, or monitoring software
 - ✓ Data is not stored on school servers
 - ✓ Uses Qualtrics, which has strict security measures
- Confidentiality Measures:
 - ✓ Clear instructions provided to administrators
 - ✓ Reports apply data suppression standards to protect individual identities
 - ✓ Institutional Review Board (ODH IRB) oversight ensures privacy
 - ✓ Draw insights from trends in student population, not individuals



15

15

Key Topics

16

Student Surveys Do Not Influence Student Behavior

- Research shows adolescent behavior is influenced by many factors (individual, individual, relationship, community, societal).
- No evidence supports the idea that surveys increase risky behaviors.

**YOUTH
SURVEY**

17

17

The Majority of Students are Honest and Truthful

TRUTH

Most students answer honestly when participation is voluntary, privacy is protected, and the survey feels meaningful.

18

18



My child does not use alcohol or drugs, should they take the survey?

- Their participation matters.
- Surveys help capture the full picture of our youth – not just high-risk behavior, but also strengths, protective factors, and progress.

19

19

What Makes OHYES! Easy for Schools

Free to schools

Simple online process –
unique link for each
school

Completed in
1 class period

Templates
and Checklists

Schools choose
Dates and grades (7-12)

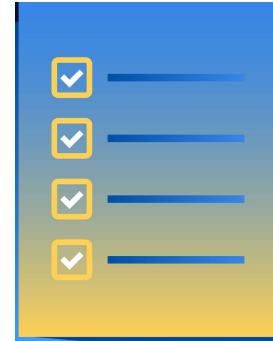
Standard or
optional version

20

20

Tools for Schools:

- ✓ Administration manual
- ✓ Planning checklist
- ✓ Parent notification templates
- ✓ Opt-out lists
- ✓ Flyers and handouts



21

21

Access to Data

- District and school results available to Superintendents and Principals
- County results available when 2+ districts participate
- Shareable with leadership teams, staff, and students
- **Reports**
 - Total responses with region and All-OHYES! data
 - Quick Reference Guide for Understanding Your Report
- **OHYES! District and School Results Dashboard**
 - Table and chart views
 - Filters by year, grade, race, and sex
 - User Guide and Video

OHIO UNIVERSITY | Voinovich School of Leadership and Public Service

 **Pacific Institute**
FOR RESEARCH AND EVALUATION

 **DataOhio**

 **Innovate Ohio Platform**

22

22

Who Acts on the Findings?



Schools



Health
Departments



Behavioral
Health
Boards



Community
Coalitions



Nonprofit
Organizations



Community
Agencies

Reduce survey burden on schools by using a common survey across stakeholders.

23

23

Using the Data for Action



- Highlight trends, common behaviors, and risk factors
- Identify affected groups or patterns.
- Inform decision-making and strategic planning
- Develop school-community partnerships and collaborate on strategies
- Prioritize and tailor evidence-based practices and strategies

24

24

Community Impact and Testimonials

Granville Schools

"OHYES! data is the foundation of our State of the Students report... These data are critical to informing our action plans."

Heath City Schools

"We use this data to inform staffing and better understand our students' lives."

JCUPP – Jefferson County

"We use OHYES! to develop local, data-driven prevention strategies that are tailored to our unique community."

25

25

Community Impact and Testimonials

Stark County MHRSB Uses OHYES! to:

- Inform Suicide Prevention Coalition planning
- Assess digital student wellness
- Guide mental health funding
- Coordinate with hospitals and crisis services
- Feed into Community Health Improvement Plans

Pike County used 2023 data showing a lack of trusted adults for youth to justify our need for OneOhio funding. We were awarded \$750,000 over three years to implement Strengthening Families programs across five counties and provide 30 positive youth activities per county each year to help connect youth with trusted adults.

26

26

Communities using OHYES! to Meet Federal Grant Reporting Requirements

Drug-Free Communities Grants

- ✓ Clark
- ✓ Fayette
- ✓ Huron
- ✓ Jefferson
- ✓ Lawrence
- ✓ Lorain
- ✓ Marion
- ✓ Tuscarawas
- ✓ Union



Partnerships for Success Grants

- ❖ Adams
- ❖ Gallia
- ❖ Jackson
- ❖ Lawrence
- ❖ Huron
- ❖ Meigs
- ❖ Sandusky
- ❖ Seneca
- ❖ Wyandot



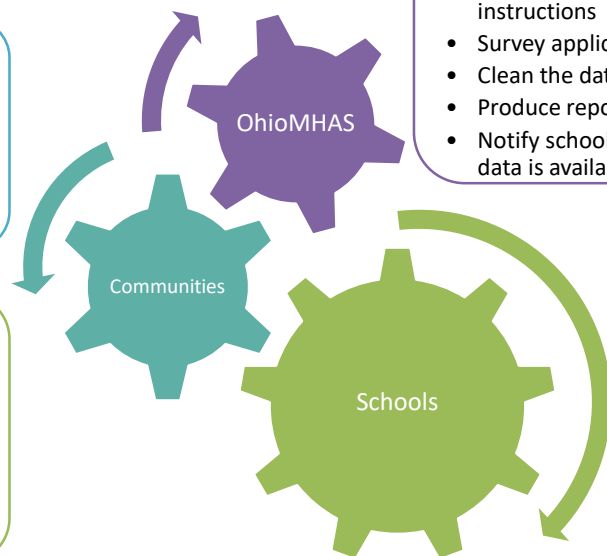
27

27

OHYES! Roles

- Incentivize OHYES!
- Coordinate with schools and OhioMHAS
- Consider an MOU w/schools to collect data
- Assist school survey coordinators
- Coordinate with agencies, ADAMH boards, health districts
- Use the results

- Superintendents and Principals sign up w/OhioMHAS (version, grades, dates)
- Send out parent notifications
- Monitor opt-outs
- Technology check-up
- Administer survey
- Request reports through MOU process
- Use the results

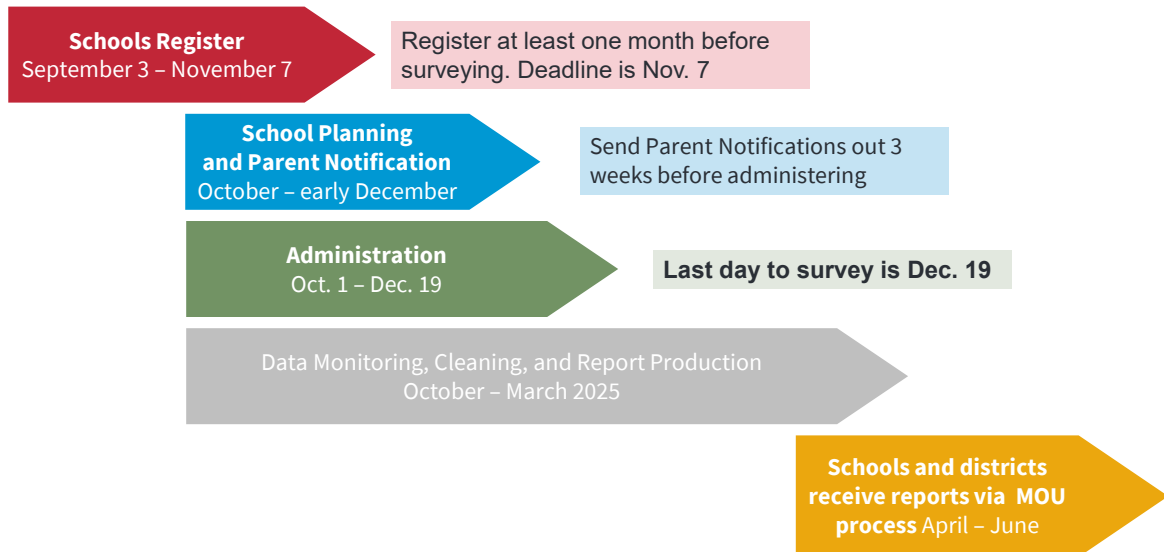


- Recruit
- Register schools
- Planning and administration instructions
- Survey application
- Clean the data
- Produce reports
- Notify schools when data is available

28

28

2025 – 2026 Timeline



29

Register Each School:

<https://bit.ly/OHYES2025-Registration>

Who can register?: Superintendents and Principals

- Or they may delegate this task to an authorized designee.
- During registration you indicate you have the authority to sign up the school.

What you will need to register:

- ✓ Registrant's name, email, and title
- ✓ Name and emails for Superintendent and Principal
- ✓ School ODEW Information Retrieval Number (IRN)
- ✓ Names and emails for two people to be school survey coordinators
- ✓ Which survey version (standard, or optional with 10 sex-related items)
- ✓ Grades participating

30

30

Teacher and Student Quick Facts

For Teachers:

- Relevant to classroom concerns (e.g., school climate, student needs).
- Requires minimal time and effort
- Supports improvement planning

For Students:

- Elevates their voice
- Captures their lived experiences
- Helps shape services and supports that affect them directly

31

31



info@ohyes.ohio.gov
Lara.Belliston@mha.ohio.gov
youthsurveys.ohio.gov

SchoolBasedMentalHealth@education.ohio.gov
[School-based Mental Health](#)

32

32



33



34

FAQ: What grades should schools survey?



- **Schools choose** which grades to survey. Grades 7 through 12 are eligible.
- We recommend grades **7, 9, and 11 at minimum**. Some schools survey all students.
- The more students you survey the more **accurate and reliable** results will be.
- In the grades you are surveying, administer the survey to **all** the students at school, on the day(s) you administer – this is called a **census**.
 - If students are absent, do not try to survey them later.
- Schools with smaller enrollments should survey as many grades as possible to avoid data suppression.

35

35

FAQ: Is the survey customizable?

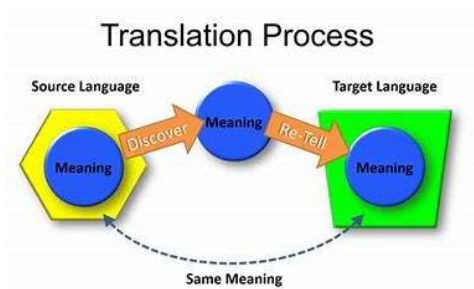


- Current capacity is limited which helps keep the OHYES! FREE to schools but limits our ability to customize the survey.
- Schools can choose: 1) Standard 110-item version, OR 2) Optional 120-item version.
 - Optional version includes sexual orientation, sexual victimization, and sexual behavior items.
- No individual items can be added or deleted.
- Students can skip any question at any time. This is highlighted in the parent passive consent notification, and in the student assent at the beginning of the survey.

36

36

FAQ: Is the survey available in other languages?



- **The survey and passive notification forms are now available in English and Spanish!**
- **We also now have voice-overs on every item.**
- Our goal is also to add ASL.
- Your school may have access to translation software. We do not prohibit you using it.
- We cannot recommend using Google Translate.
- There may be translation issues with non-approved sources – the meanings may not be the same, and so the data for those responses may differ.

37

37

FAQ: How is this different from other SEL screeners?/Should we use this one or another?

- The OHYES! survey does not identify specific individuals or their needs (data is aggregated).
- Schools should consider their data needs to decide if using the OHYES! in addition to their current screeners would be helpful to show what students are experiencing (risk and protective factors).
- Review the [OHYES! questions](#) to see what information is collected and how it supports your planning.
- OHYES! offers schools the ability to compare to the county, region, and state.
- OHYES! supports state agencies and other stakeholders to understand needs, gaps, and where to focus initiatives.



38

38

OHYES! results help schools and communities make a positive impact



Pursue programming to meet specific student needs



Target efforts to build & sustain healthy homes, schools, and community environments



Set goals for wellness and track progress over time



Guide the modification of school health curricula and programming

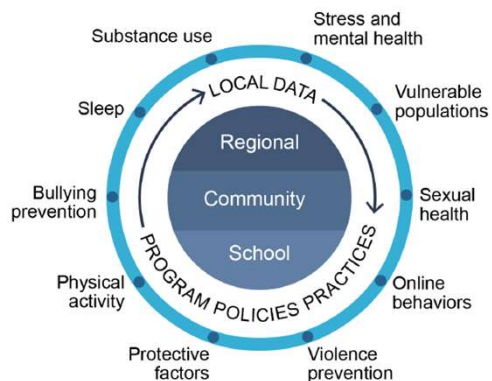


Seek funding and other supports for new initiatives

39

39

Why Communities Conduct Student Health Surveys



- Gather local data on health behaviors and protective factors among youth
- Assist with determining local priorities, establishing programs, developing policies, and advocating for resources
- Empower schools and communities to take action

40

40

How Schools use OHYES!

Healthy Vibrant Graduates

The Whole Child Framework

Strategic Planning: Comprehensive Continuous Improvement Plan (CCIP) and Ohio Improvement Process (OIP)

Positive Behavioral Interventions and Supports (PBIS)

Student Wellness and Success Funding

Every Student Succeeds Act (ESSA) Title IV Part A

Tailor programs and behavior interventions

Funding Decisions

School-community partnerships

41

41



Survey Item Considerations

- ✓ Items come from validated national surveys (for example, the Youth Risk Behavior Survey and the National Survey on Drug Use and Health).
- ✓ Maintain core measures to allow comparisons across years.
- ✓ Include items from funder-required outcomes (e.g., SAMHSA).

42

42

Believability of Results



Careful data cleaning. Surveys are eliminated if:

- Majority of items are missing
- All demographic data are missing
- Inconsistent responses
- Students indicated they did not answer truthfully

43

43

Schools Decide if the OHYES! is Right for Them



- ✓ Discuss how OHYES! helps identify student issues
- ✓ Visit youthsurveys.ohio.gov/our-surveys/ohyes
- ✓ View a copy of the survey
- ✓ Register to participate
- ✓ Partner with parents and community organizations to understand students' challenges and provide programs that help.

44

44

Resources are Available

Answering the survey typically does not cause discomfort for students.

- School counselors are available for support
- Online resources are provided at <https://youthsurveys.ohio.gov/reports-and-insights/student-support-resources>
- Schools can offer a local resource list for students to access additional help from school, community, and other resources if needed.

45